



WARWICKSHIRE COLLEGE PROJECT PRESENTATION



KwaZulu-Natal Equine & Community Project



GLOBAL reach. **ADVENTURE** for all. **PROJECTS** to inspire.

ABOUT US:

AFRICA

GAP Africa Projects

- We are a specialised travel company that offers academic trips and volunteering opportunities for groups and individual travellers, in a number of locations worldwide
- We pride ourselves on curating experiences which are personalised to your needs and requirements
- Our first project travelled in 2012
- Full ATOL Bonding
- Working with over 55 Colleges and Universities around the UK
- A small dedicated team in the UK and South Africa





AFRICA

ABOUT THE PROJECT

Our Equine and Wildlife conservation work in more detail

ABOUT YOUR PROJECT

AFRICA

Your Equine Project Explained

- A unique equine and community project based in South Africa
- Live and work in a number of locations in KwaZulu-Natal that specialise in equine and community projects
- Tailor-made projects to suit your needs and interests
- Project activities include
 - Equine Welfare
 - Equine Management
 - Conservation Activities
 - Community Development
- Dedicated horses, staff and vehicles
- 10-night experience
- The most incredible mix of equine, community and wildlife experience you will ever have

ABOUT THE PROJECT

AFRICA

KwaZulu-Natal Equine & Community Project

The team of equine professionals at the KwaZulu-Natal Equine & Community Project offer a bespoke course to each institution, dependent on their own personal objectives and learning needs.

We set out the basis of the trip, comprising a 10-night academic module split between the Midlands in KwaZulu-Natal: a conservation reserve, the surrounding community, and the coastal town of St Lucia.



A full day will be planned but will vary from day to day depending on the day's task and research goals.

The project split and duration are as follows:

10 Night Itinerary

8 Nights

Midlands area of KwaZulu-Natal

2 Nights

St Lucia Coastal Project

It's important to remember that wildlife does not work to an agenda, therefore activities may change at short notice!

ABOUT YOUR PROJECT

AFRICA

KwaZulu-Natal Equine & Community Project Location





AFRICA

ABOUT THE KWAZULU- NATAL EQUINE & COMMUNITY PROJECT

Our Equine and Community
work in more detail

KwaZulu-Natal Equine & Community Activities

- SUMCHI Demonstrate and Lectures
- Guided Tours
- Mounted Games Clinic
- Horseback Ride through Forests
- Canopy Tour (optional)
- Working at an Equine Welfare Organisation
- Rural Community Outreach
- Beach and Bush Ride
- Hippo and Croc Tour
- Game Drives

YOUR PROJECT

AFRICA

BSET Academy & SUMCHI Introduction



ANY QUESTIONS?

INFO@GAPAFRICAPROJECTS.COM | +44 (0)207 1937819

PROJECT PRESENTATION 9

YOUR PROJECT



Mounted Games Clinic

A weight limit of 85Kg to ride



Karkloof Horse Adventures

A weight limit of 85Kg to ride



YOUR PROJECT

AFRICA

Coastal Horse Care Unit



ANY QUESTIONS?

INFO@GAPAFRICAPROJECTS.COM | +44 (0)207 1937819

PROJECT PRESENTATION 12

YOUR PROJECT

AFRICA

Bhangazi Horse Safaris

A weight limit of 85Kg to ride



ANY QUESTIONS?

INFO@GAPAFRICAPROJECTS.COM | +44 (0)207 1937819

PROJECT PRESENTATION 13

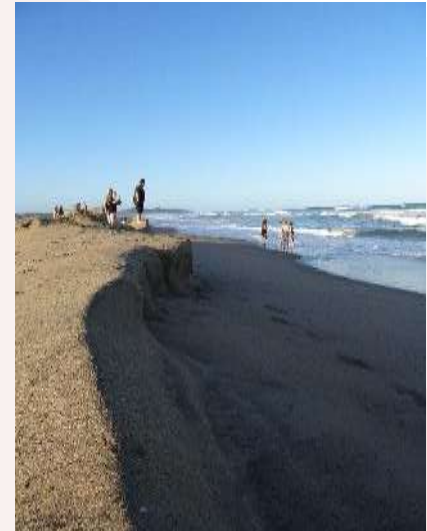
Big Five Game Reserve



YOUR PROJECT

AFRICA

St Lucia



ANY QUESTIONS?

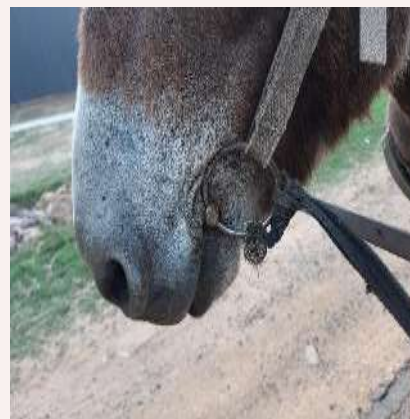
INFO@GAPAFRICAPROJECTS.COM | +44 (0)207 1937819

PROJECT PRESENTATION 15

ABOUT THE PROJECT

AFRICA

Community – GAP Donation Bags



ANY QUESTIONS?

INFO@GAPAFRICAPROJECTS.COM | +44 (0)207 1937819

PROJECT PRESENTATION 16



AFRICA

ADDITIONAL ACTIVITIES & EXCURSIONS

Your free time on the project

ADDITIONAL ACTIVITIES & EXCURSIONS

AFRICA

Karkloof Canopy Tour (own cost and optional)



ANY QUESTIONS?

INFO@GAPAFRICAPROJECTS.COM | +44 (0)207 1937819

PROJECT PRESENTATION 18



AFRICA

ACCOMMODATION & LIFESTYLE

Accommodation

Accommodation – Little Fields Country House

Little Fields Country House is a charming eco-estate nestled in the KwaZulu-Natal Midlands, just outside the villages of Howick and Hilton.

Set within 12 hectares of beautiful farmland and wetlands, students can enjoy sweeping valley views, mown paths through wild landscapes, and encounters with local wildlife.

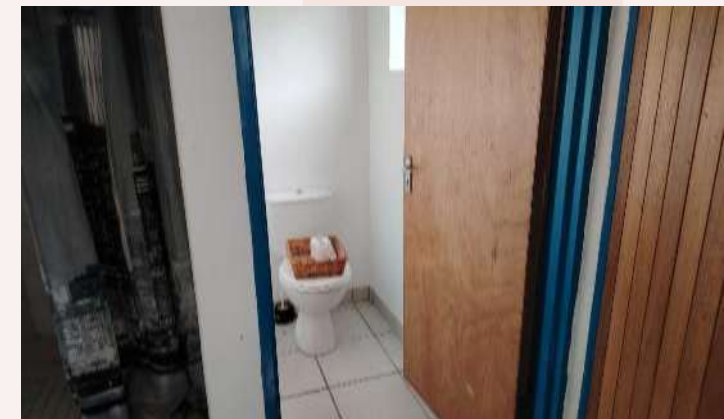
The property features spacious communal areas, cosy fireplaces, and delicious farm-style breakfasts.



Accommodation – Coastal Horse Care Unit

During your placement at the Coastal Horse Care Unit, students stay on-site at the Emahhashini Training Centre in comfortable dormitory-style accommodation.

Located on the charity's farm in the Cato Ridge area, this simple but welcoming setup allows students to fully immerse themselves in the daily life of the rescue centre.



Shonalanga Accommodation – St Lucia

Guest House style accommodation is provided during your time in St Lucia.

You will be accommodated in twin rooms with ensuite facilities.

There are no facilities for washing clothes at the accommodation but there are launderettes nearby which are not expensive.

The guest house is located in the heart of St Lucia's Main Street and is the ideal location to explore the surrounding area.



Food at the Project

In both Midlands accommodation, all meals are provided. Hosts create wholesome home-cooked style meals made with local ingredients. Dinners are served in the evenings, lunches will be made by the group and breakfast will be self-service.

There will be opportunities to taste local dishes including the traditional 'braai' (BBQ) and to enjoy meals outdoors.

In St Lucia, all meals are provided at the accommodation, with the exception of one lunch and one dinner.

Dietary Requirements

Provision can be made for Vegetarian & Vegan diets and for those who have a medical condition such as Coeliac disease that requires a Gluten Free Diet and for those with severe allergies to dairy, eggs or nuts.



WHY SHOULD I TRAVEL?

AFRICA

What do previous travellers say about the Equine and Community Project?



"This trip gave me a **greater insight** into what we can actually do as veterinary nurses."



"Horse riding in the game reserve was a **phenomenal experience**."



"It has inspired me to look into **volunteering opportunities**."

Reference: GAP Africa Projects Post Project Trip Questionnaire 23/24



AFRICA

BOOKING YOUR ADVENTURE

The next steps to the trip of a
lifetime!

WHAT'S INCLUDED

AFRICA

What is Included?

- Flights
- Transfer to/from project in South Africa
- Accommodation
- Three meals per day
- All activities as part of the project
- Airport meet/greet
- 24-hour in-country support



NOT Included

- UK Transfers
- Personal Travel Insurance *
- Meals on travel days - before arriving & after departing from the project
- 1 lunch and 1 dinner at St Lucia
- Any activities not specified as part of the project
- Visas/travel documents
- Tips
- Riding hat, boots, gloves, body protector – see kit list

* We recommend you take out insurance as soon as your booking is confirmed

THE NEXT STEPS

AFRICA



Project dates & key deadlines

Confirmed travel dates:

Depart UK: 27th June 2027 | Arrive SA: 28th June 2027

Depart SA: 8th July 2027 | Arrive UK: 9th July 2027

Trip cost:

£2,896.00 – £3,122.00 * Based on a group of 13 (confirmed once flights have been held)

Key deadlines are:

- Return online booking form by 18/05/2026
- Deposit payment, £300.00 by 05/06/2026
- 50% instalment payment by 08/03/2027
- Balance payment by 03/05/2027
- 14/06/2027 e-Tickets & final documents will be issued

BOOKING YOUR ADVENTURE

AFRICA

Booking Form

- Please submit by 18/05/2026
- No deposit required at this stage of booking
- Passport fields not mandatory

Key deadlines are:

- Deposit of £300 to confirm placement
- Instalment payment of 50% due 16 weeks before departure
- Balance payment due 8 weeks before departure

GAP Africa Projects

AFRICA PROJECTS | SOCIAL MEDIA | AFRICA PROJECTS | WHO WE ARE | BLOG | GET IN TOUCH

CALL +44 (0)207 1937819 | EMAIL: INFO@GAPAFRICAPROJECTS.COM

BOOKING FORM

(NB: Your name should be given as displayed on your passport)

Title *

Name *

Date of birth *

Address *

Telephone *

Mobile *

Email 1 *

Email 2 *

(NB: Please note that all booking correspondence will be sent via Email!)

Passport no.

Passport Issue Date

THE NEXT STEPS



Confirmation Documents

Confirmation documents will be issued and sent directly to you via email.

Please communicate with us with any questions relating to the field trip.

10 Oct 2022
Ref: 23-REA-LALZ/CLL

Dear Chloe,

Thank you for agreeing to book with Gap Africa Projects as part of the 6x6x6x6 Challenge trip to Zulu Land Conservation Research. Please take the time to look through this document and check that everything is correct.

We have received your deposit payment and your payment is now confirmed as per the details below. The final balance and due date is detailed on your invoice.

Please remember that you can contact me to discuss anything in this document as well as any other aspect of your expedition and I am so glad you are part of our team. Please email me for the rest of your journey.

Warm regards,
The GAP Africa Team

Passengers Travelling
Miss Chloe
Placement(s)
Zulu Land Conservation Research (06/03/23 - 18/03/23)

Inclusions
Flights, shared road transfers to and from Project, accommodation for duration, all meals and all project activities.

Exclusions
Insurance: any activities undertaken that are not included in part of the project.

Your Flight(s)

05/03/2023	06:15:00	Manchester (MAN)
06/12:09	11:30:00	London Heathrow (LHR)
05/03/2023	01:18:00	London Heathrow (LHR)
06/05	10:25 + 1 D	Frankfurt (FRA)
18/03/2023	01:20:15	Frankfurt (FRA)
18/05	10:50 + 1 D	London Heathrow (LHR)
19/03/2023	01:00:15	London Heathrow (LHR)
19/03	11:40	Manchester (MAN)

mark.booth@gapafriaprojects.com
+44 (0) 207 193 7819

CONFIRMATION INVOICE

Gap Africa Projects
100, 101, 102, 103, 104, 105, 106, 107, 108, 109, 110, 111, 112, 113, 114, 115, 116, 117, 118, 119, 120, 121, 122, 123, 124, 125, 126, 127, 128, 129, 130, 131, 132, 133, 134, 135, 136, 137, 138, 139, 140, 141, 142, 143, 144, 145, 146, 147, 148, 149, 150, 151, 152, 153, 154, 155, 156, 157, 158, 159, 160, 161, 162, 163, 164, 165, 166, 167, 168, 169, 170, 171, 172, 173, 174, 175, 176, 177, 178, 179, 180, 181, 182, 183, 184, 185, 186, 187, 188, 189, 190, 191, 192, 193, 194, 195, 196, 197, 198, 199, 200, 201, 202, 203, 204, 205, 206, 207, 208, 209, 210, 211, 212, 213, 214, 215, 216, 217, 218, 219, 220, 221, 222, 223, 224, 225, 226, 227, 228, 229, 230, 231, 232, 233, 234, 235, 236, 237, 238, 239, 240, 241, 242, 243, 244, 245, 246, 247, 248, 249, 250, 251, 252, 253, 254, 255, 256, 257, 258, 259, 260, 261, 262, 263, 264, 265, 266, 267, 268, 269, 270, 271, 272, 273, 274, 275, 276, 277, 278, 279, 280, 281, 282, 283, 284, 285, 286, 287, 288, 289, 290, 291, 292, 293, 294, 295, 296, 297, 298, 299, 300, 301, 302, 303, 304, 305, 306, 307, 308, 309, 310, 311, 312, 313, 314, 315, 316, 317, 318, 319, 320, 321, 322, 323, 324, 325, 326, 327, 328, 329, 330, 331, 332, 333, 334, 335, 336, 337, 338, 339, 340, 341, 342, 343, 344, 345, 346, 347, 348, 349, 350, 351, 352, 353, 354, 355, 356, 357, 358, 359, 360, 361, 362, 363, 364, 365, 366, 367, 368, 369, 370, 371, 372, 373, 374, 375, 376, 377, 378, 379, 380, 381, 382, 383, 384, 385, 386, 387, 388, 389, 390, 391, 392, 393, 394, 395, 396, 397, 398, 399, 400, 401, 402, 403, 404, 405, 406, 407, 408, 409, 410, 411, 412, 413, 414, 415, 416, 417, 418, 419, 420, 421, 422, 423, 424, 425, 426, 427, 428, 429, 430, 431, 432, 433, 434, 435, 436, 437, 438, 439, 440, 441, 442, 443, 444, 445, 446, 447, 448, 449, 450, 451, 452, 453, 454, 455, 456, 457, 458, 459, 460, 461, 462, 463, 464, 465, 466, 467, 468, 469, 470, 471, 472, 473, 474, 475, 476, 477, 478, 479, 480, 481, 482, 483, 484, 485, 486, 487, 488, 489, 490, 491, 492, 493, 494, 495, 496, 497, 498, 499, 500, 501, 502, 503, 504, 505, 506, 507, 508, 509, 510, 511, 512, 513, 514, 515, 516, 517, 518, 519, 520, 521, 522, 523, 524, 525, 526, 527, 528, 529, 530, 531, 532, 533, 534, 535, 536, 537, 538, 539, 540, 541, 542, 543, 544, 545, 546, 547, 548, 549, 550, 551, 552, 553, 554, 555, 556, 557, 558, 559, 560, 561, 562, 563, 564, 565, 566, 567, 568, 569, 570, 571, 572, 573, 574, 575, 576, 577, 578, 579, 580, 581, 582, 583, 584, 585, 586, 587, 588, 589, 590, 591, 592, 593, 594, 595, 596, 597, 598, 599, 600, 601, 602, 603, 604, 605, 606, 607, 608, 609, 610, 611, 612, 613, 614, 615, 616, 617, 618, 619, 620, 621, 622, 623, 624, 625, 626, 627, 628, 629, 630, 631, 632, 633, 634, 635, 636, 637, 638, 639, 640, 641, 642, 643, 644, 645, 646, 647, 648, 649, 650, 651, 652, 653, 654, 655, 656, 657, 658, 659, 660, 661, 662, 663, 664, 665, 666, 667, 668, 669, 670, 671, 672, 673, 674, 675, 676, 677, 678, 679, 680, 681, 682, 683, 684, 685, 686, 687, 688, 689, 690, 691, 692, 693, 694, 695, 696, 697, 698, 699, 700, 701, 702, 703, 704, 705, 706, 707, 708, 709, 710, 711, 712, 713, 714, 715, 716, 717, 718, 719, 720, 721, 722, 723, 724, 725, 726, 727, 728, 729, 730, 731, 732, 733, 734, 735, 736, 737, 738, 739, 740, 741, 742, 743, 744, 745, 746, 747, 748, 749, 750, 751, 752, 753, 754, 755, 756, 757, 758, 759, 760, 761, 762, 763, 764, 765, 766, 767, 768, 769, 770, 771, 772, 773, 774, 775, 776, 777, 778, 779, 780, 781, 782, 783, 784, 785, 786, 787, 788, 789, 790, 791, 792, 793, 794, 795, 796, 797, 798, 799, 800, 801, 802, 803, 804, 805, 806, 807, 808, 809, 810, 811, 812, 813, 814, 815, 816, 817, 818, 819, 820, 821, 822, 823, 824, 825, 826, 827, 828, 829, 830, 831, 832, 833, 834, 835, 836, 837, 838, 839, 840, 841, 842, 843, 844, 845, 846, 847, 848, 849, 850, 851, 852, 853, 854, 855, 856, 857, 858, 859, 860, 861, 862, 863, 864, 865, 866, 867, 868, 869, 870, 871, 872, 873, 874, 875, 876, 877, 878, 879, 880, 881, 882, 883, 884, 885, 886, 887, 888, 889, 890, 891, 892, 893, 894, 895, 896, 897, 898, 899, 900, 901, 902, 903, 904, 905, 906, 907, 908, 909, 910, 911, 912, 913, 914, 915, 916, 917, 918, 919, 920, 921, 922, 923, 924, 925, 926, 927, 928, 929, 930, 931, 932, 933, 934, 935, 936, 937, 938, 939, 940, 941, 942, 943, 944, 945, 946, 947, 948, 949, 950, 951, 952, 953, 954, 955, 956, 957, 958, 959, 960, 961, 962, 963, 964, 965, 966, 967, 968, 969, 970, 971, 972, 973, 974, 975, 976, 977, 978, 979, 980, 981, 982, 983, 984, 985, 986, 987, 988, 989, 990, 991, 992, 993, 994, 995, 996, 997, 998, 999, 1000.

This is an important document. Make sure that you take it with you when you travel.

ATOL Certificate

This confirms that your money is protected by the ATOL scheme and that you can get home if your travel company collapses.

This certificate sets out how the ATOL scheme will protect the people named on it for the parts of their trip listed below.

Who is protected? Number of passengers: 19

What is protected?

You can find more detailed information on your booking, including price, on the confirmation you will receive from Gap Africa Projects Limited.

Who is protecting your trip?
Gap Africa Projects Limited ATOL Number 10890

Your protection
You are protected from when you were given this certificate to the end of your trip.
If Gap Africa Projects Limited stops trading, the passengers named above will either:
1 complete their trip and return to the UK, or
2 receive a refund.
Your protection depends on the terms of the ATOL scheme (available at www.atol.org.uk).

If Gap Africa Projects Limited stops trading, you must follow the instructions at www.atol.org.uk (where there will be details of arrangements to bring people back to the UK, and information on how people can claim their money back) or you can call (444) 20 7463 6360.

By issuing this ATOL Certificate, under Regulation 17 of the Civil Aviation (Air Travel Organisations' Licensing) Regulations 2012, Gap Africa Projects Ltd certifies that the trip to which it applies is covered by the ATOL held by the organiser named above.

The ATOL scheme is run by the Civil Aviation Authority and paid for by the Air Travel Trust. To see what that is and what you can expect, together with full information on its terms and conditions go to www.atol.org.uk.

As well as the protection of the ATOL scheme, you have protection under the Package Travel Regulations. For more information see www.direct.gov.uk in the Travel and Transport section.

Unique reference number:	Date of issue:	ATOL Certificate issuer:	ATOL number:	Package sale
4413	19/10/2022	Gap Africa Projects Ltd	10890	

[Click here to view all available flights](#)

BOOKING YOUR ADVENTURE

AFRICA

Group Web Page

<https://gapafricaprojects.com/27-4847/>



Booking Form

<https://gapafricaprojects.com/booking-form-27-4847-wca-kze-warwickshire-college/>



BOOKING FORM

Your Global Adventure Starts here!

Please use the form below to submit your provisional booking to your selected project. You have the option to pay your initial deposit with the submission of your booking form, or we will contact you for payment once your project placement has been secured.

If you'd like to contact us to ask any initial questions or find out more about what project you'd like to go on and when, you can get also get in touch using our short enquiry form, or by calling +44 (0) 207 193 7819.

(NB: Your name should be given as displayed on your passport)

Title *

Name *

Date of birth *

Address *



GLOBAL reach. **ADVENTURE** for all. **PROJECTS** to inspire.

Explore our network of Global Adventure Projects:



WWW.GLOBALADVENTUREPROJECTS.COM



Sustainability & Social, Economic Responsibility

Local employment from rural communities – our project partners employ a high percentage of staff from local communities. They advocate training to advance careers in hospitality, wildlife and conservation.

Low environmental impact camps – our project bush camps are built with minimal impact on the environment. Resources from the surrounding area are utilised for buildings, water is (where possible) pumped from local river sources and green energy supplies, such as solar are championed.

Community donations and support – we encourage all our international study groups to be proactive in donation collections and arrange for excess baggage for said donations to be taken out to South Africa in support of the local communities.

Move Africa, supporting young females – 3 in 10 girls in South Africa miss a week of school every month because they cannot afford basic sanitary products. Our project partners work with Move Africa alongside their partner NGOs, to distribute menstrual cups to the local communities and provide education workshops.

Rhino Art – Project rhino realises the enormous responsibility the youth have to ensure our wildlife is protected for many generations to come. They ensure they can reach and educate as many kids as possible through Rhino Art, using art workshops to teach about conservation. This initiative is supported by our local project partners.

Food/crop education – our project partners encourage food and crop education to rural communities, where cost of living to low income families and distance travelled to obtain basic resources can prove problematic. Projects include community allotments and providing education on best practice for crop rotations, harvest seasons and nutrition.

Recycling workshops – Litter, and in particular plastics, is a major issue and threat to the ecosystem in Southern Africa. Rural communities have limited waste removal available and it is therefore a problem escalating at an alarming rate. Recycling workshops are provided through local schools to help educate children on the importance of correctly disposing of litter and recycling plastics.