



..... COLLEGE INFORMATION PACK



KwaZulu-Natal Equine & Community Project

AFRICA

GLOBAL reach. **ADVENTURE** for all. **PROJECTS** to inspire.



AFRICA

ABOUT THE PROJECT

Our Equine and community conservation work in more detail

TRIP OVERVIEW

AFRICA

Warwickshire College – Booking Reference 4847

Travel Dates:

27th June 2027 to 8th July 2027

International Flights:

Flight No	Flight Date	Dept.	Dept. Time	Arr.	Arr. Time
TBC	27/06/2027	UK	TBC	Johannesburg (JNB)	TBC + 1 Day
TBC	08/07/2027	Johannesburg (JNB)	TBC	UK	TBC + 1 Day

*Always check the flight timings on your final documents

Baggage Allowance – 1 piece checked baggage @ 20kgs, 1 piece hand baggage max dimensions 56x36x23cm

Project:

KwaZulu-Natal Equine & Community Project

Trip Cost:

£2,896.00 – £3122.00 per person (based on 13 confirmed once flights have been held)

£300.00 deposit

50% Instalment due by 08/03/2027

50% Balance due by 03/05/2027

ABOUT THE PROJECT

AFRICA

KwaZulu-Natal Equine & Community Project

The team of equine professionals at the KwaZulu-Natal Equine & Community Project offer a bespoke course to each institution, dependent on their own personal objectives and learning needs.

We set out the basis of the trip, comprising a 10-night academic module split between the Midlands in KwaZulu-Natal KZN, a conservation reserve, the surrounding community, and the coastal town of St Lucia.



A full day will be planned but will vary from day to day depending on the day's task and research goals.

The project split and duration are as follows:

10 Night Itinerary

8 Nights

Midlands area of KwaZulu-Natal

2 Nights

St Lucia Coastal Project

It's important to remember that wildlife does not work to an agenda, therefore activities may change at short notice!

ABOUT YOUR PROJECT

AFRICA

Your Equine Project Explained

- A unique equine and community project based in South Africa
- Live and work in a number of locations in KwaZulu-Natal that specialise in equine and community projects
- Tailor-made projects to suit your needs and interests
- Project activities include
 - Equine Welfare
 - Equine Management
 - Conservation activities
 - Community Development
- Dedicated horses, staff and vehicles
- 10-night experience
- The most incredible mix of equine, community and wildlife experience you will ever have

Broadacres Stable Yard

Broadacres Stable Yard offers students a fantastic opportunity to experience a professional equestrian facility and gain insight into modern approaches to equine care and wellbeing.

During the visit, students will enjoy an exclusive demonstration and lecture on the SUMCHI Technique, an innovative equine magnetic massage method developed by professional equine physiotherapist Beth Shaw of the BSET Academy. This hands-on session introduces the Sumchi6 magnetic massager and its specially choreographed stroke routines, designed to improve circulation, release muscle tension, and promote relaxation. Inspired by the natural mutual grooming behaviour of horses, the technique also strengthens the bond between horse and handler.

Students will observe how the flowing massage strokes work through fascia and muscle tissue, gaining valuable insight into complementary therapies and holistic approaches to equine wellness within the modern horse care industry.



ABOUT YOUR PROJECT

AFRICA

Mounted Games Clinic

Students will participate in an exciting Mounted Games clinic alongside local community riders from Mpopphomeni township. Taking place over two days, this fast-paced programme involves thrilling relay races and team challenges on horseback, designed to develop riding confidence, coordination, balance, and teamwork.

Day one focuses on learning core games and techniques, with students paired alongside local riders to practice skills and build rapport. Day two brings friendly competition, as mixed teams battle it out in exhilarating races, putting their newly acquired skills to the test.

Mounted Games is a fantastic leveller, bringing together riders of all backgrounds in a fun, supportive environment. Working alongside young South African riders provides a wonderful opportunity for cultural exchange and shared experiences that transcend language and background. It's often a highlight of the trip, with friendships formed that continue long after students return home.

Please note there is a **weight limit of 85Kg to ride**.



ABOUT YOUR PROJECT

AFRICA

Karkloof Valley

Karkloof Horse Adventures

Karkloof Horse Adventures is situated on a beautiful working farm close to Howick in the KwaZulu-Natal Midlands. The farm boasts spectacular rolling hills, lush grasslands, and dramatic steep gorges carved into the landscape, with an impressive six waterfalls cascading through the property.

Students will enjoy an adventure ride through the picturesque valley, taking in incredible scenery as they traverse diverse terrain. The ride offers opportunities to spot game animals roaming freely across the farm

Optional Activity: Karkloof Canopy Tour (**additional cost**)

For those seeking an additional thrill, the nearby Karkloof Canopy Tour offers an exhilarating zip-line adventure through one of South Africa's oldest indigenous mist-belt forests. You will glide between platforms suspended high among the ancient trees, enjoying breathtaking aerial views of the forest canopy and surrounding valleys. It's an unforgettable blend of adventure, education, and natural beauty that perfectly complements the horseback experience.

Please note there is a **weight limit of 85Kg to ride.**



ABOUT YOUR PROJECT

AFRICA

Coastal Horse Care Unit

The Coastal Horse Care Unit is a welfare organisation dedicated to rescuing, rehabilitating, and rehoming abused, neglected, and abandoned horses across KwaZulu-Natal. This vital charity provides sanctuary for horses that have suffered cruelty, injury, or abandonment, giving them a second chance at life.

Students gain invaluable hands-on experience in equine care, including feeding, grooming, wound treatment, and general health monitoring. Working alongside experienced staff, they learn about equine welfare practices, rehabilitation techniques, and the challenges facing working horses in local communities.

This meaningful placement allows students to contribute directly to the charity's mission while developing practical skills and understanding the realities of animal welfare work in South Africa.



ABOUT YOUR PROJECT

AFRICA

Bhangazi Horse Safaris

Bhangazi Horse Safaris offers unforgettable horseback experiences through the stunning iSimangaliso Wetland Park, a UNESCO World Heritage Site near St Lucia. Students will enjoy the two-hour Bush and Beach Ride, exploring coastal dune forests before emerging onto pristine sandy beaches along the Indian Ocean shoreline.

The ride offers opportunities to encounter wildlife, including hippos, crocodiles, and diverse birdlife in their natural habitat. Knowledgeable guides share insights into the area's ecology and conservation importance while ensuring a safe, enjoyable experience. This iconic ride provides an authentic connection with South Africa's natural beauty that few other experiences can match.

Please note there is a **weight limit of 85Kg to ride**.



ABOUT YOUR PROJECT

AFRICA

Big 5 Game Reserve

A day will be spent at Hluhluwe-iMfolozi is Africa's oldest proclaimed game reserve and a global leader in rhino conservation. Home to the Big Five, this stunning KwaZulu-Natal wilderness offers exceptional game viewing across diverse landscapes of rolling hills, woodlands, and savannah. Its pioneering conservation work saved the white rhino from extinction.



ABOUT YOUR PROJECT

AFRICA

St Lucia

St Lucia is a charming coastal town nestled within the iSimangaliso Wetland Park, South Africa's first UNESCO World Heritage Site. This unique destination sits where the St Lucia estuary meets the Indian Ocean, creating an extraordinary ecosystem where wildlife roams freely through the streets after dark.

A highlight is the Hippo and Croc Tour, a boat cruise along the estuary offering close encounters with resident hippo pods and Nile crocodiles basking on the banks. Expert guides share fascinating insights into the behaviour and ecology of these iconic African animals, alongside impressive birdlife including fish eagles, kingfishers, and herons.

Back on land, students can explore St Lucia's vibrant street markets, where local artisans sell handcrafted jewellery, traditional Zulu crafts, and unique souvenirs. The relaxed atmosphere makes it perfect for browsing, practising bargaining skills, and supporting local communities.

With its blend of wildlife encounters, natural beauty, and cultural experiences, St Lucia offers students an authentic taste of coastal KwaZulu-Natal life.



ABOUT YOUR PROJECT

AFRICA

Sample Itinerary

Day 1 – Arrival & Welcome

Arrive at Durban (King Shaka Airport) and transfer to the KwaZulu-Natal Midlands (2 hours). Orientation and dinner at your accommodation. Accommodation: Little Fields Country House

Day 2 – BSET Academy & SUMCHI Introduction

Visit Broadacres Stable Yard for a BSET Academy lecture and horse study session, followed by a hands-on SUMCHI equine magnetic massage demonstration. Accommodation: Little Fields Country House

Day 3 – Mounted Games Clinic (Day One)

Begin a two-day Mounted Games clinic with local community riders from Mpophomeni township. Learn core games and techniques in a fun, supportive environment. Accommodation: Little Fields Country House

Day 4 – Mounted Games Clinic (Day Two)

Friendly team competitions and relay races alongside local riders. A fantastic opportunity for cultural exchange and lasting friendships. Accommodation: Little Fields Country House

Day 5 – Karkloof Horse Adventures & Canopy Tour

Two-hour Adventure Ride through spectacular Karkloof scenery. Optional zip-line Canopy Tour through the indigenous forest (**additional cost**). Accommodation: Little Fields Country House

ABOUT YOUR PROJECT

AFRICA

Sample Itinerary

Day 6 – Community volunteering

Assisting with a local community project. Accommodation: Little Fields Country House

Day 7 – Coastal Horse Care Unit & Rural Outreach

Transfer to the Coastal Horse Care Unit. Assist with rural outreach activities, gaining hands-on experience in equine welfare and rehabilitation. Accommodation: Coastal Horse Care Unit (dormitory-style)

Day 8 – Coastal Horse Care Unit Continued

Continue rural outreach with the veterinary team and assist at the centre with horse care and management. Accommodation: Coastal Horse Care Unit (dormitory-style)

Day 9 – Hluhluwe-iMfolozi & St Lucia

Travel to Hluhluwe-iMfolozi Park for a Big Five game drive, with time in the early evening to explore the local markets. Accommodation: St Lucia

Day 10 – Bhangazi Horse Safari & Beach Day

Two-hour Bush and Beach Ride through iSimangaliso Wetland Park. Afternoon free time for the beach, with an evening Hippo and Croc Boat Tour on the estuary. Accommodation: St Lucia

Day 11 – Departure

Transfer to Durban airport (King Shaka Airport) for departure.

It's important to remember that wildlife does not work to an agenda, therefore activities may change at short notice!



AFRICA

ACCOMMODATION & LIFESTYLE

Life at the project

Accommodation – Little Fields Country House

Little Fields Country House is a charming eco-estate nestled in the KwaZulu-Natal Midlands, just outside the villages of Howick and Hilton.

Set within 12 hectares of beautiful farmland and wetlands, students can enjoy sweeping valley views, mown paths through wild landscapes, and encounters with local wildlife.

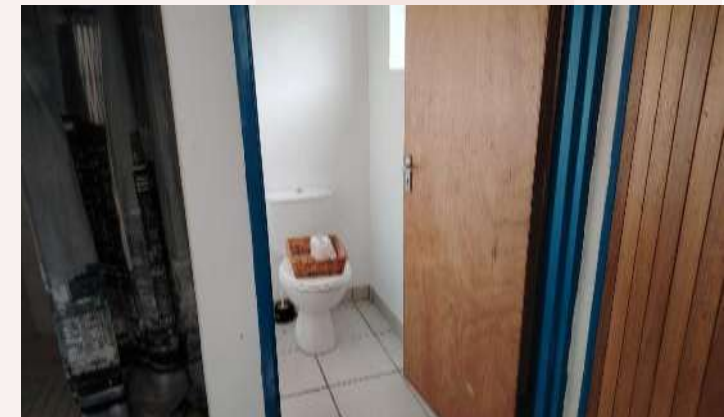
The property features spacious communal areas, cosy fireplaces, and delicious farm-style breakfasts.



Accommodation – Coastal Horse Care Unit

During your placement at the Coastal Horse Care Unit, students stay on-site at the Emahhashini Training Centre in comfortable dormitory-style accommodation.

Located on the charity's farm in the Cato Ridge area, this simple but welcoming setup allows students to fully immerse themselves in the daily life of the rescue centre.



Shonalanga Accommodation – St Lucia

Guest House style accommodation is provided during your time in St Lucia.

You will be accommodated in twin rooms with ensuite facilities.

There are no facilities for washing clothes at the accommodation but there are laundrettes nearby which are not expensive.

The guest house is located in the heart of St Lucia's Main Street and is the ideal location to explore the surrounding area.



Food at the Project

In both Midlands accommodation, all meals are provided. Hosts create wholesome home-cooked style meals made with local ingredients. Dinners are served in the evenings, lunches will be made by the group and breakfast will be self-service.

There will be opportunities to taste local dishes including the traditional 'braai' (BBQ) and to enjoy meals outdoors.

In St Lucia, all meals are provided at the accommodation, with the exception of one lunch and one dinner.

Dietary Requirements

Provision can be made for Vegetarian & Vegan diets and for those who have a medical condition such as Coeliac disease that requires a Gluten Free Diet and for those with severe allergies to dairy, eggs or nuts.





AFRICA

USEFUL INFORMATION

Inclusions/Exclusions &
Recommended Kit List

WHAT'S INCLUDED

AFRICA

What is Included?

- Flights
- Transfer to/from project in South Africa
- Accommodation
- Three meals per day
- All activities as part of the project
- Airport meet/greet
- 24-hour in-country support



NOT Included

- UK Transfers
- Personal Travel Insurance *
- Meals on travel days - before arriving & after departing from the project
- 1 lunch and 1 dinner at St Lucia
- Any activities not specified as part of the project
- Visas/travel documents
- Tips
- Riding hat, boots, gloves, body protector – see kit list

* We recommend you take out insurance as soon as your booking is confirmed

Suggested Kit List

To allow for ease of transfer to the project a soft holdall/ soft suitcase is preferred.

- Short and long sleeve T-shirts *
- Long work trousers and shorts (or work/zip-off trousers)
- Hiking boots/comfortable walking shoes to work in every day
- Waterproof jacket
- Sweatshirt/Fleece (Winter months pack plenty)
- Padded jacket/windbreaker (Winter months), although it can get very cold on an open vehicle even in summer
- Socks
- Underwear
- Change of casual clothes for evenings
- Sandals / comfy shoes to wear after work hours
- Warm hat (Winter only) / Hat for sun protection (all year)
- Gloves for warmth (Winter only)
- Working gloves
- Daypack rucksack
- Riding hat
- Jodhpurs
- Riding boots
- Swimwear
- Sunscreen and Sunglasses
- Personal medical items
- First aid kit
- Toiletries
- Tick / Insect repellent
- Water bottle
- Good torch

Other useful items:

- Binoculars
- Camera
- Power Bank

* All work clothes should be neutral or earth tones. **No** skimpy/revealing or brightly coloured clothing.



GLOBAL reach. **ADVENTURE** for all. **PROJECTS** to inspire.

Explore our network of Global Adventure Projects:



WWW.GLOBALADVENTUREPROJECTS.COM

