



HALESOWEN COLLEGE PROJECT INFORMATION PACK



KwaZulu-Natal Conservation Research

GLOBAL reach. **ADVENTURE** for all. **PROJECTS** to inspire.



TRIP OVERVIEW

AFRICA

Halesowen College – Booking Reference 4844

Travel Dates:

24th March 2027 – 4th April 2027

Flights:

Flight No	Flight Date	Dept.	Dept. Time	Arr.	Arr. Time
TBC	24/03/2027	London Heathrow (LHR)	TBC	Johannesburg (JNB)	TBC + 1 Day
TBC	04/04/2027	Johannesburg (JNB)	TBC	London Heathrow (LHR)	TBC + 1 Day

*Always check the flight timings on your final documents

Baggage Allowance – TBC

Project:

KwaZulu-Natal Conservation Research – Zingela Wilderness Reserve & Nambiti Game Reserve

Trip Cost:

£2800.00 – £2998.00 per person (to be confirmed once flights are available)

£300.00 Deposit

50% Instalment due 28/11/2026

50% Balance due 28/01/2027



AFRICA

ABOUT THE PROJECT

Overview and location
of the project



KwaZulu-Natal Conservation Research

We work with a team of qualified nature guides and ecologists at the KwaZulu-Natal Conservation Research Project to offer a bespoke course for each institution, tailored to their specific objectives and learning needs.

The trip is structured around a 10-night academic module, split between two conservation reserves.



A full day will be planned but will vary from day to day depending on the day's task and research goals.

The project split and duration are as follows:
10 Night Itinerary

5 Nights

Nambiti Big 5 Conservation Research

5 Nights

Zingela Wilderness Conservation and Adventure Activities

It's important to remember that wildlife does not work to an agenda, therefore activities may change at short notice!

ABOUT THE PROJECT

AFRICA

Nambiti Game Reserve (5 Nights)

Nambiti Game Reserve is a magnificent 23,000-acre expanse of wilderness, home to the Big Five. Its varied habitats - including grasslands, riverine bush, savannah, and thornveld - support an exceptional biodiversity.



ABOUT THE PROJECT

AFRICA

Zingela River Safari (5 Nights)

Zingela Wildlife Reserve covers 12,500 acres of unfenced, dangerous game-free wilderness. From the family-run riverside bush camp, you'll have the opportunity to get involved in ongoing research taking place on the property. During your stay, you can also take part in a range of adventurous activities such as rafting and abseiling.

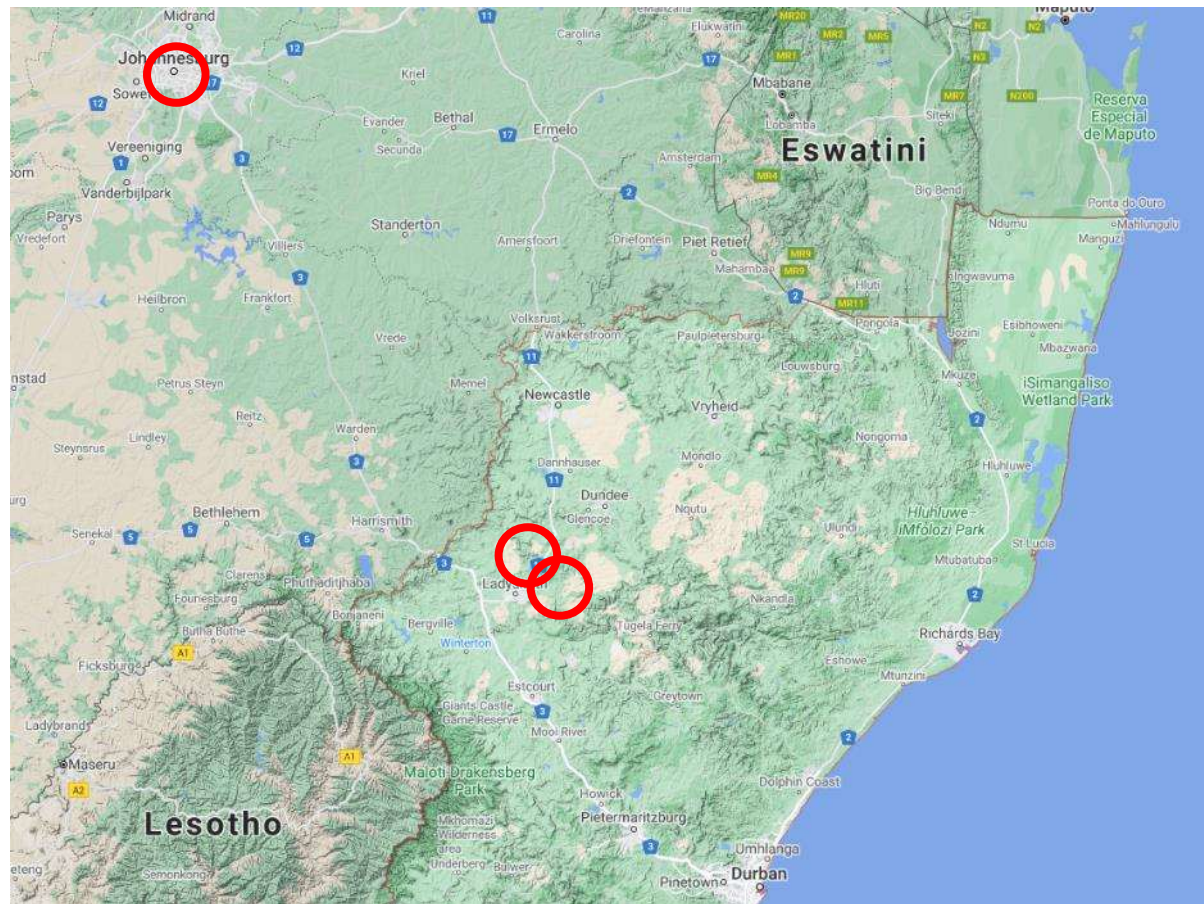


ABOUT THE PROJECT

AFRICA

KwaZulu-Natal Conservation Project- Location

South Africa a world leader in conservation





AFRICA

5 Nights at Nambiti Game Reserve

A Big Five Game Reserve

Your Conservation Programme – Nambiti

Students will be taught and work alongside the field guides and conservation team. The following examples depict the day-to-day activities that may be undertaken as part of the project at Nambiti.

- Alien Vegetation Control & Reserve Maintenance
- Use of Telemetry Tracking
- Elephant Monitoring – ID kits
- Rhino Monitoring – Awareness
- Anti-poaching talk and fence walk
- Predator Monitoring
- Night Drive
- Bush Walk
- Habitat and Prey Selection of Predators
- Tracks, Signs and Spoor
- Community Development



Activities

Use of Telemetry Tracking

During the telemetry sessions, students will learn how to use VHF tracking equipment to locate and monitor collared animals. Telemetry is an essential monitoring tool for understanding wildlife behaviour and guiding conservation efforts.

Tracks, Signs and Spoor

Tracking involves identifying and interpreting physical evidence of animal presence, including footprints, droppings, fur, scratch marks, and feeding signs. Students learn to recognise species-specific patterns and behaviours by examining these traces in their natural habitat.

Bush Walk

Students will experience the thrill of a bush walk, accompanied by highly qualified trail guides. On foot, they'll explore the wilderness, learning to identify tracks, signs, and animal behaviour, while gaining a deeper understanding of the ecosystem. Walking in this territory offers an unforgettable perspective on wildlife conservation, safety awareness, and the delicate balance of the natural environment.



Activities

Alien Vegetation Control

These activities involve removing invasive non-native plant species that threaten native biodiversity and ecosystem integrity. Students will learn identification techniques to distinguish invasive plants from native species, then participate in removal activities using manual methods.

Reserve Maintenance

Students participate in trail maintenance, fence repairs, debris removal, and facility upkeep to ensure safe access for research activities. Through hands-on involvement, students develop practical conservation skills while directly contributing to habitat preservation.

Night Drive

Night drives reveal species activity invisible during daytime surveys, including predators, insects, and specialised nocturnal animals.



Priority species monitoring

Elephant Monitoring

Elephant monitoring involves observation and data collection to track population size, movement patterns, and health status. Students learn to identify individual elephants by physical characteristics, contribute to ID kits and collect behavioural observations.

Rhino Monitoring

Rhino monitoring involves tracking and observation of black and white rhino populations to assess health, movement patterns and breeding success.

Predator Monitoring

Predator monitoring involves tracking of carnivore populations. Students learn to identify individuals, record movement patterns, and document predation events during reserve patrols and camera trap analysis.

Anti-poaching talk and fence walk

Anti-poaching talks educate students on wildlife protection, poaching threats, and conservation enforcement strategies. Expert field rangers discuss detection methods and the importance of reserve security. Fence walks involve inspecting boundary perimeters to identify breaches, damage, or signs of illegal entry. Students learn patrol techniques and surveillance methods while contributing to security efforts. These activities emphasise the critical role of active protection in preventing wildlife crime and safeguarding endangered species within the reserve.



YOUR PROJECT

AFRICA

Community Projects & Zulu Culture

A chance for academic groups to engage with local communities living around the game reserves.

An opportunity to meet traditional leaders and gain insight into Zulu culture firsthand.

Projects: Brave Spaces, Jabong Hats, Project Rhino and Rhino Art, Funda Nenja, Kidz Africa – Rugby, Primary schools and creches.



ANY QUESTIONS?

INFO@GAPAFRICAPROJECTS.COM | +44 (0)207 1937819

INFORMATION PACK 13

Additional Research Projects

Animal Vigilance in Antelope: Response to Predation Risk

Focusing on vigilance behaviour in antelope, specifically impala and blue wildebeest, as a predator avoidance strategy. This provides a unique opportunity to observe changes in antelope vigilance in response to increased predation threats.

Aardvark Research

This studies one of Africa's most elusive animals. Rarely seen, their presence in Nambiti is tracked through signs like burrows and tracks. The research aims to understand their habitat use, population size, breeding, and ecological impact.

River Assessments

A rapid bioassessment method that uses the presence and absence of different types of aquatic macroinvertebrates to calculate a numerical score indicating the water quality and overall ecological health of a river.



Research Projects

Small Predator monitoring – All species need to be identified, mainly via camera trapping. A catalogue of animals is being made so we can identify as many individuals as possible on the reserve. More information is desperately required by the reserve, especially in relation to prey species.

Large Predator Management – Lion, leopard, brown hyena and caracal have an impact that needs to be identified and recorded. Mapping their home ranges, activities and predator-prey relationship.

Conservation Management – Aspects of the physical management of the environment and other supporting infrastructure is needed to manage a game reserve. Fencing, road and tracks, erosion, planning and mapping all need monitoring to ensure the success of the reserve's biodiversity.

Mega Herbivore Management – (Elephant, rhino, hippo, giraffe) Feeding habits and their impact on the ecosystem need to be reported on.





AFRICA

5 Nights at Zingela Nature Reserve

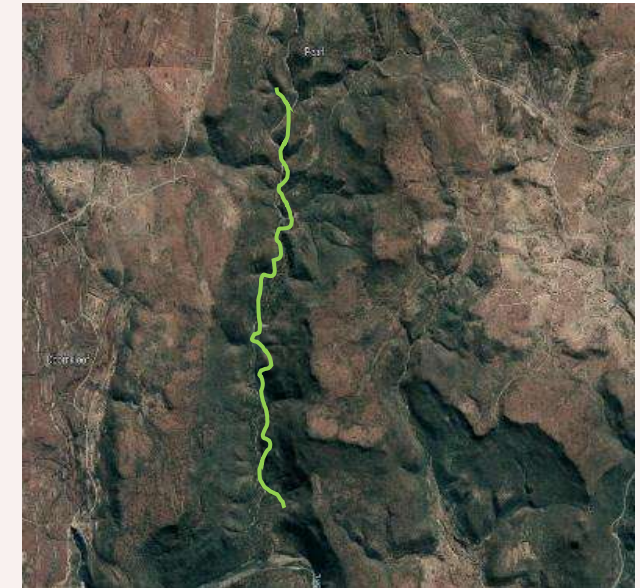
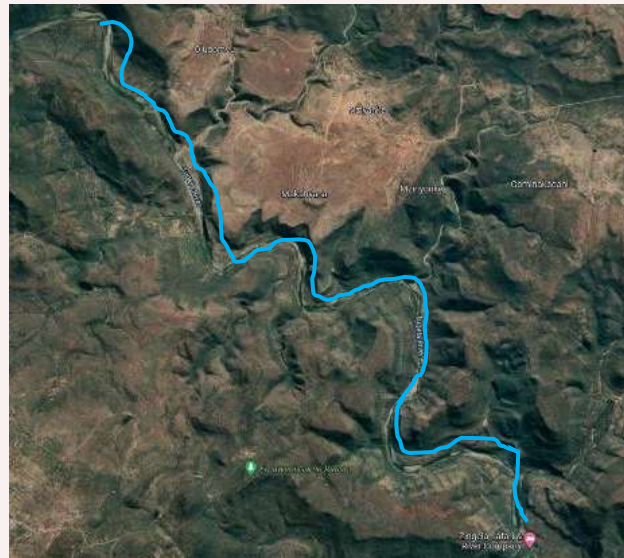
River Research and Adventure



Wilderness Trail Experience

As part of your conservation experience, groups will have the opportunity to take part in a breathtaking wilderness trail down to Zingela. The group will be collected in an open truck, and those choosing the adventurous route* will be transported to the start of the trail. From there, you'll hike down as guides share insights about the local flora and their traditional uses along the way. You may also encounter some wildlife or village cattle during the descent. At the river, guides will assist you in paddling down the Tugela River, leading you right into camp where you'll find the rest of your luggage — a true adventure!

** A road transfer will also be available between reserves for anyone who doesn't wish to participate in the trail.*



Your Conservation Programme – Zingela

Students will be taught and work alongside the field guides and scientific team. The following examples depict the day-to-day activities that may be undertaken as part of the project at Zingela Reserve.

- Spatial Distribution and Habitat use of species
- Use of Telemetry Tracking
- Giraffe Migration and Conservation Project
- Reptile/amphibian Pit Fall Traps and tunnels
- Freshwater Ecology assessment
- Fish Tagging
- Educational Bush Walks – Ecology & Botany
- Tracks, Signs and Spoor
- Community Development
- Camera Trapping and Data Processing



Long-Term Biodiversity Monitoring Projects

Freshwater Ecology & invert sampling

Students collect macroinvertebrate samples from the river using nets and sorting trays. Species identification and abundance determine a score reflecting water quality. This method provides a rapid assessment of freshwater ecosystem conditions and serves as an accessible introduction to biomonitoring techniques. Through field sampling, students assess biodiversity, nutrient levels, and pollution impacts.



Fish Tagging

Fish tagging involves attaching identifying marks or tags to individual fish to track their movements, migration patterns, and growth rates. Students capture fish using nets or traps, apply external or internal tags, and carefully release them back into the water.



Long Term Biodiversity Monitoring Projects

Reptile Pit Fall and Funnel Traps

Pit fall traps are simple yet effective traps used to survey and capture Reptiles/Amphibians for research and monitoring. Small containers or buckets are buried flush with the ground surface along predetermined transect lines. Students regularly check and record captured species, then safely release them, providing valuable population and diversity data.

Camera Trapping and Data Processing

Camera trapping uses motion-activated cameras positioned throughout the reserve to capture images of the wildlife. These cameras record animal movements, behaviour, and species presence without human disturbance. Students then process the collected data by reviewing footage, identifying species, counting individuals, and analysing activity patterns.



Research Projects

Giraffe Research Project - In the past six years, considerable progress has been made in compiling and producing a species-wide assessment of population size and distribution. The continued growth of these populations however is limited by the ability of that ecosystem to support a particular number of Giraffes due to space, water and forage availability (i.e. limited carrying capacity).

Over population of giraffe can have deleterious effects on indigenous flora which may in turn adversely affect other animals within the conservation area; it is necessary to calculate a sustainable carrying capacity for a specific area.

Through our ongoing Giraffe Conservation Project, we aim to gather all the data necessary for generating a conservation plan for our Giraffe. This will help in planning for the future expansion of conservation areas or for reducing the population size through game capture.



ZINGELA WILDERNESS RESERVE

AFRICA

Animal Welfare Outreach Program

Participants will join the camp's in-house veterinarian to assist local Zulu farmers in caring for their livestock, primarily goats, but also including dogs, cats, sheep, and cattle, depending on the participants' qualifications and experience.

- Vaccinating and treating rural farmers' goats
- Working with various animals at the homesteads
- Animal welfare education at local schools



Adventure Activities – Zingela

White Water Rafting & Kayaking

There is an excellent 20km stretch of rapids and pools in this section of the Tugela Canyon including the intimidating Washing Machine and Finger Rock rapids.

Abseiling & Rock Climbing

The cliffs overlooking the Tugela Canyon provide dizzying abseil sites. Face your fear or watch other participants step over the edge. Registered, experienced guides are there to provide reassurance and safety.





AFRICA

DIPLOMA IN INTERNATIONAL VOLUNTEERING

Centre for Global Citizenship
Studies (CGCS).

Diploma in International Volunteering with a Wildlife Conservation specialism

Delivered by the Centre for Global Citizenship Studies (CGCS), this Level 3 Diploma is designed to turn your hands-on experience in South Africa into a recognised qualification, giving you academic credit and evidence you can use for university applications, personal statements and job interviews.

Beyond the subject knowledge, you'll build and evidence skills in: leadership, adaptability, teamwork, critical thinking, cultural intelligence, and personal resilience.

The course is designed to fit around your trip with online learning completed at your pace. The modules include:

- Prepare (Before your trip)
- Specialise (Pre-trip learning)
- Participate (During your trip)
- Reflect (After your trip)

Each module comes with course notes, videos, recommended readings, and compulsory assignments.

You will cover: Biodiversity & Ecosystem, Wildlife Protection, Community Engagement, Legal & Ethical Considerations.

Cost: £425
Enrolment upon
payment of the fee





AFRICA

ACCOMMODATION & LIFESTYLE

Life in the African Bush

Game Reserve Camp – Nambiti

Groups are accommodated in a rustic bush camp situated in a safe, dangerous-game-free section of the reserve.

Students stay in shared, comfortable safari tents with access to communal hot and cold showers and regular flushing toilets.

Students can gather in the communal dam-side tent, around the fireplace, or in the pool. At night, you may hear wildebeest grunting near camp and the distant roar of Nambiti's lions.



Game Reserve Camp – Zingela

Zingela is a warm, family-run riverside camp with friendly faces and even friendlier dogs.

Students will stay in one of the tented camps, in shared but comfortable safari tents, with access to communal hot and cold showers and regular flushing toilets.

There are welcoming communal spaces for students to spend time together, along with plenty of quiet breakaway spots to relax. At night, you can fall asleep to the sounds of the Tugela River and the chorus of frogs.



ACCOMMODATION

AFRICA

Food at the project

Three meals a day are provided and prepared by the kitchen staff. Students are expected to help clear up after meals.

Breakfasts will consist of toast and cereals; lunch may include pasta, wraps, burgers, stir fry; dinners include meat, fish and vegetables with rice, potatoes or pasta. On weekends a braai (BBQ) is often organised

Dietary Requirements

Provision can be made for Vegetarian & Vegan diets and for those who have a medical condition such as Coeliac disease that requires a Gluten Free Diet and for those with severe allergies to dairy, eggs or nuts.





AFRICA

USEFUL INFORMATION

Inclusions/Exclusions &
Recommended Kit List



WHAT'S INCLUDED

AFRICA

What is Included?

- UK transfers
- Flights
- Transfers to/from project
- Accommodation
- Three meals per day
- All activities as part of the project
- Airport meet/greet
- 24/7 In country support



NOT Included

- Personal Travel Insurance *
- Meals on travel days – before arriving & after departing from project
- Any activities not specified as part of the project
- Visas/travel documents
- Tips

* We recommend you take out insurance as soon as your booking is confirmed

Suggested kit list

To allow for ease of transfer to the project a soft holdall/ soft suitcase is preferred.

- Wellington boots (long or short for travel Jan – April)
- Short and long sleeve t-shirts
- Long work trousers and shorts (or work/zip-off trousers)
- Hiking boots/comfortable walking shoes to work in every day
- Waterproof jacket
- Sweatshirt/Fleece (Jun – Aug) – pack plenty
- Padded jacket/windbreaker (Jun – Aug) although it can get very cold on an open vehicle
- Socks and Underwear
- Change of casual clothes for evenings
- Sandals / comfy shoes to wear after work hours
- Warm hat (Jun – Aug / Hat for sun protection (all year)
- Gloves for warmth (Jun –Aug)
- Working gloves
- Daypack rucksack
- Micro-fibre sleeping bag liner (extra warmth Jun –Aug)
- Swimwear
- Beach Towel (micro-fibre takes less space)
- Sunscreen and Sunglasses
- Personal medical items
- First aid kit
- Toiletries
- Tick / Insect repellent
- Water bottle
- Binoculars
- Good torch (headlamp/torch is best)

Other useful items:

- Camera
- Power bank
- Water shoes

* All work clothes should be neutral or earth tones for working in the bush. No skimpy or bright-coloured clothing to be worn



GLOBAL reach. **ADVENTURE** for all. **PROJECTS** to inspire.

Explore our network of Global Adventure Projects:



GLOBALADVENTUREPROJECTS.COM

