



# WESTON COLLEGE GROUP PRESENTATION



## Hanover Conservation Research



**GLOBAL** reach. **ADVENTURE** for all. **PROJECTS** to inspire.

# ABOUT US:

AFRICA

## GAP Africa Projects

- We are a specialised travel company that offers academic trips and volunteering opportunities for groups and individual travellers, in a number of locations worldwide
- We pride ourselves on curating experiences which are personalised to your needs and requirements
- Our first project travelled in 2012
- Full ATOL Bonding
- Working with over 55 Colleges and Universities around the UK
- A small dedicated team in the UK and South Africa





**AFRICA**

# **ABOUT THE WATERBERG**

Project overview and  
location

# ABOUT THE WATERBERG

AFRICA

## Your Conservation Field Trip Explained

- A unique conservation experience based in South Africa
- Live & work in 2 research camps on a wild African game reserve
- 13-night programme specifically tailored
- Learn about conservation management
- Project Activities include:
  - Pioneering Conservation Research
  - Conservation Activities
  - Possible Veterinary intervention
- Dedicated vehicles and conservation staff
- The most incredible wildlife experience you will ever have

# ABOUT THE WATERBERG

AFRICA

## Hanover Conservation Research Project

Our academic team and qualified rangers at the Hanover Conservation Research Project offer a bespoke course to each institution dependent on their own personal objectives and learning needs.

A full day will be planned but will vary from day to day depending on the day's task and research goals.

### 13 Night Project

- 7 Nights at Hanover Nature Reserve – Limpopo Province
- 6 Nights at Welgevonden Game Reserve – Limpopo Province



# ABOUT THE WATERBERG

AFRICA

## Waterberg Conservation Research – Location



# ABOUT THE WATERBERG

TRUE WILDERNESS

AFRICA



ANY QUESTIONS?

[INFO@GAPAFRICAPROJECTS.COM](mailto:INFO@GAPAFRICAPROJECTS.COM) | +44 (0)207 1937819

PROJECT PRESENTATION 7

## What is a Game Reserve?

- A game reserve is a large area of protected land where wild animals can live safely
- Wildlife is free roaming throughout the reserve allowing them to thrive in their natural habitat
- Reserves are either Government Owned (National Parks) or Privately Owned/Managed
- Most reserves will have physical boundaries i.e. electrified fence line
- Due to physical boundaries, wildlife must be managed due to restraints on population growth, migration and resources
- Wildlife is protected but also utilised as a tourist attraction (Eco Tourism) which creates funding for conservation efforts and research





AFRICA

# ABOUT THE PROJECT: HANOVER NATURE RESERVE

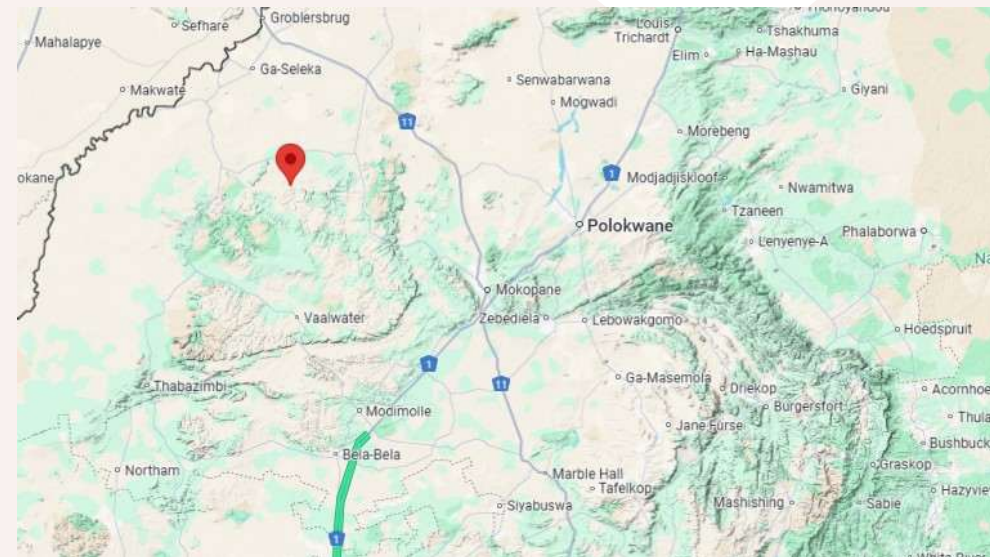
Our conservation work  
in more detail

# ABOUT SWEBESWEBE

AFRICA

## Hanover & SwebeSwebe Nature Reserve

- 9,000 Hectare Privately Managed Reserve
- Forming part of the Waterberg Biosphere
- Unique to GAP Africa Projects
- Work alongside the conservation team including:
  - Wildlife Vets
  - Conservation Researchers
  - Ecologists
  - Anti Poaching Unit
- Located in a Malaria free zone
- Proclaimed Protected Conservation Area
- Savannah Eco System
- Research Camp Accommodation



## Project Overview – Hanover Nature Reserve

The Hanover conservation research programme serves as a living laboratory for ecological research, offering students and researchers a chance to work alongside experts in the field.

Participants will play an active role in a variety of immersive conservation and research activities. Through activities like wildlife monitoring, vegetation surveys and data analysis, students gain practical experience using tools such as GPS devices and biomass sampling equipment. Each project offers a unique opportunity to contribute meaningfully to the reserve's ecological goals while developing valuable skills in fieldwork and conservation management.

Beyond research, the programme fosters community empowerment and sustainable conservation practices, inspiring future generations to protect this remarkable landscape while equipping participants with valuable skills for careers in conservation.



## Project Overview – Hanover Nature Reserve

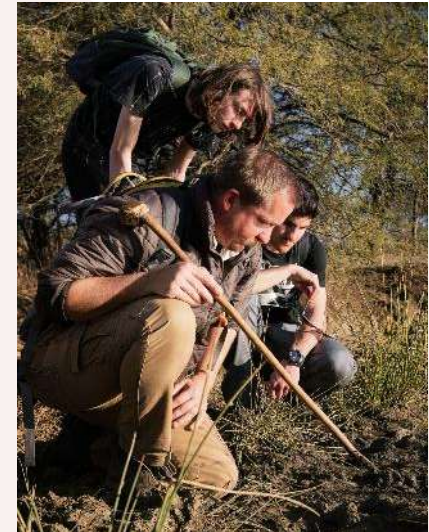
- Alien Plant Mapping
- Small mammal monitoring
- Camera trap surveys
- Vegetation Surveys
- Butterfly Surveys
- Bird Ringing
- River health surveys
- Giraffe Monitoring
- Game Counts
- Scorpion Hunt
- Invert Sweeps
- Regen Cattle Project



# ABOUT THE PROJECT

AFRICA

## Tracks, signs and spoor



ANY QUESTIONS?

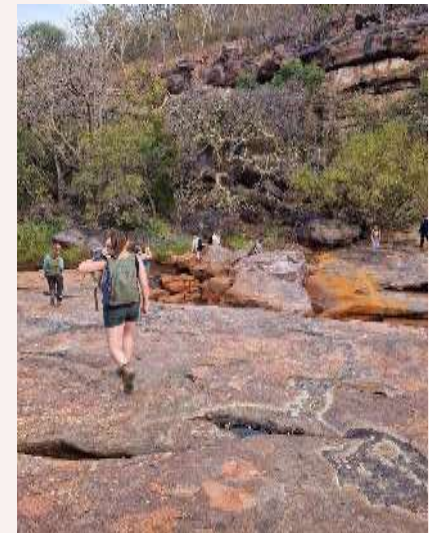
[INFO@GAPAFRICAPROJECTS.COM](mailto:INFO@GAPAFRICAPROJECTS.COM) | +44 (0)207 1937819

PROJECT PRESENTATION 13

# ABOUT THE PROJECT

AFRICA

## Ecology Walks



ANY QUESTIONS?

[INFO@GAPAFRICAPROJECTS.COM](mailto:INFO@GAPAFRICAPROJECTS.COM) | +44 (0)207 1937819

PROJECT PRESENTATION 14

# ABOUT THE PROJECT

AFRICA

## Giraffe Research Project

Population data and database for individuals

Diet and vegetation impact assessment



ANY QUESTIONS?

[INFO@GAPAFRICAPROJECTS.COM](mailto:INFO@GAPAFRICAPROJECTS.COM) | +44 (0)207 1937819

PROJECT PRESENTATION 15

# ABOUT THE PROJECT

AFRICA

## River Assessments



ANY QUESTIONS?

[INFO@GAPAFRICAPROJECTS.COM](mailto:INFO@GAPAFRICAPROJECTS.COM) | +44 (0)207 1937819

PROJECT PRESENTATION 16

# ABOUT THE PROJECT

AFRICA

## Reptile Research and Trapping

Species frequency

Herpetofauna succession during vegetation rehabilitation

Comparing herpetological diversity



ANY QUESTIONS?

[INFO@GAPAFRICAPROJECTS.COM](mailto:INFO@GAPAFRICAPROJECTS.COM) | +44 (0)207 1937819

PROJECT PRESENTATION 17

# ABOUT THE PROJECT

AFRICA

## Bird Identification



ANY QUESTIONS?

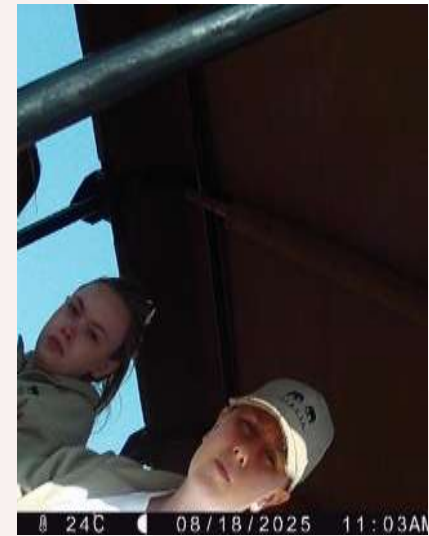
[INFO@GAPAFRICAPROJECTS.COM](mailto:INFO@GAPAFRICAPROJECTS.COM) | +44 (0)207 1937819

PROJECT PRESENTATION 18

# ABOUT THE PROJECT

AFRICA

## Camera Traps



ANY QUESTIONS?

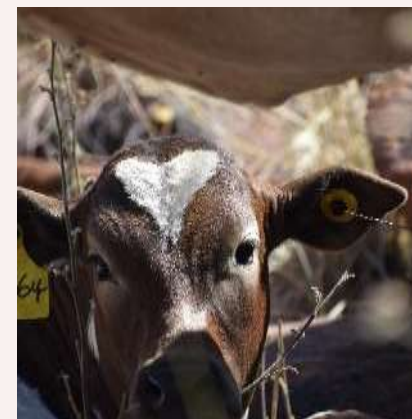
[INFO@GAPAFRICAPROJECTS.COM](mailto:INFO@GAPAFRICAPROJECTS.COM) | +44 (0)2071937819

PROJECT PRESENTATION 19

# ABOUT THE PROJECT

AFRICA

## Regenerative Grazing Project



# ABOUT THE PROJECT

AFRICA

## Habitat Management



ANY QUESTIONS?

[INFO@GAPAFRICAPROJECTS.COM](mailto:INFO@GAPAFRICAPROJECTS.COM) | +44 (0)207 1937819

PROJECT PRESENTATION 21

# ABOUT THE PROJECT

AFRICA

## Vegetation Surveys and Ecological Studies



ANY QUESTIONS?

[INFO@GAPAFRICAPROJECTS.COM](mailto:INFO@GAPAFRICAPROJECTS.COM) | +44 (0)207 1937819

PROJECT PRESENTATION 22

# ABOUT THE PROJECT

AFRICA

## Wildlife and Ecological Projects



ANY QUESTIONS?

[INFO@GAPAFRICAPROJECTS.COM](mailto:INFO@GAPAFRICAPROJECTS.COM) | +44 (0)207 1937819

PROJECT PRESENTATION 23

# ABOUT THE PROJECT

AFRICA

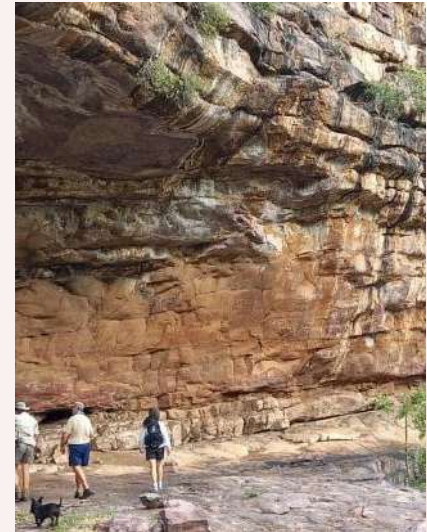
## Practical Management



# ABOUT THE PROJECT

AFRICA

## Rural Development and Support



ANY QUESTIONS?

[INFO@GAPAFRICAPROJECTS.COM](mailto:INFO@GAPAFRICAPROJECTS.COM) | +44 (0)207 1937819

PROJECT PRESENTATION 25

# ABOUT THE PROJECT

AFRICA

## Lecturers

- Welcome to Hanover and SwebeSwebe
- Waterberg Wild Dogs
- Baboon Project
- Use of Earth Ranger



A large kudu antelope with long, spiraling horns is the central focus of the image. It is shown in profile, facing left, with its head and neck in the foreground. The background is a lush savanna landscape with green trees and a body of water in the distance. The image is overlaid with a semi-transparent circular graphic on the left side, which contains the text 'AFRICA' and the main title.

**AFRICA**

# **ABOUT THE PROJECT: WELGEVONDEN GAME RESERVE**

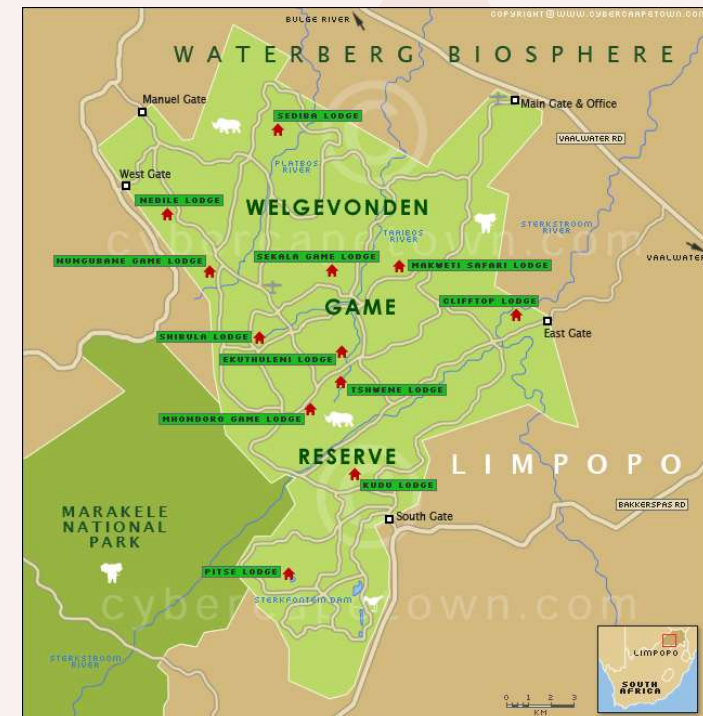
Our conservation work  
in more detail

# ABOUT WELGEVONDEN

AFRICA

## Welgevonden Game Reserve

- 36,000 Hectare Privately Managed Game Reserve
- Forming part of the Waterberg Biosphere
- Work alongside the conservation team including:
  - Wildlife Vets
  - Conservation Researchers
  - Ecologists
  - Anti Poaching Unit
- Located in a Malaria free zone
- Proclaimed Protected Conservation Area
- Savannah Eco System
- Research Camp Accommodation



# ABOUT WELGEVONDEN

AFRICA

## Home to the BIG 5



ANY QUESTIONS?

[INFO@GAPAFRICAPROJECTS.COM](mailto:INFO@GAPAFRICAPROJECTS.COM) | +44 (0)207 1937819

PROJECT PRESENTATION 29

# ABOUT WELGEVONDEN

AFRICA

Home to over 60 Species of Mammal



ANY QUESTIONS?

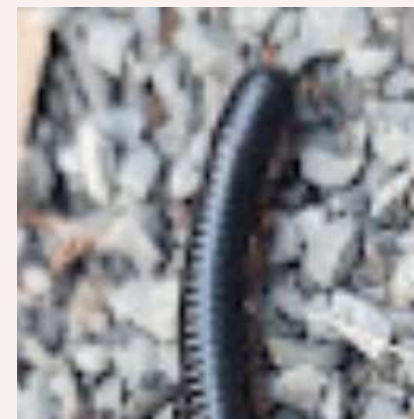
[INFO@GAPAFRICAPROJECTS.COM](mailto:INFO@GAPAFRICAPROJECTS.COM) | +44 (0)207 1937819

PROJECT PRESENTATION 30

# ABOUT WELGEVONDEN

AFRICA

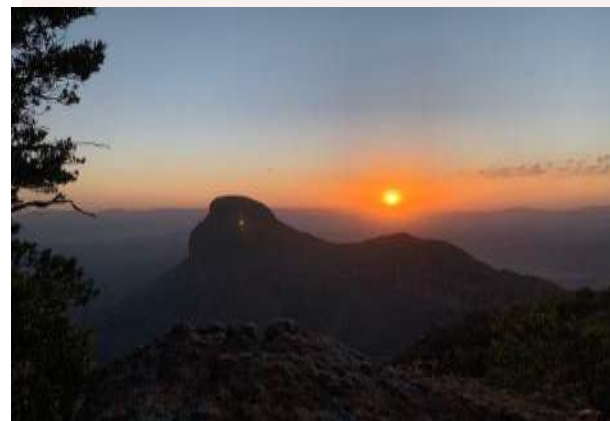
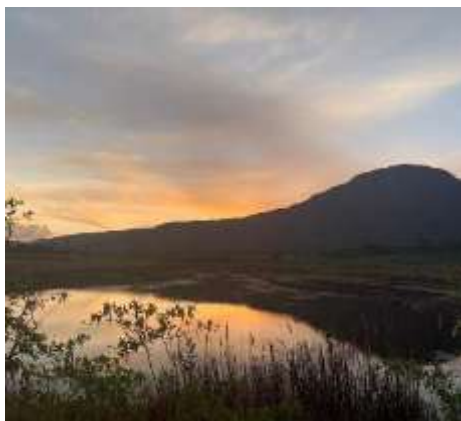
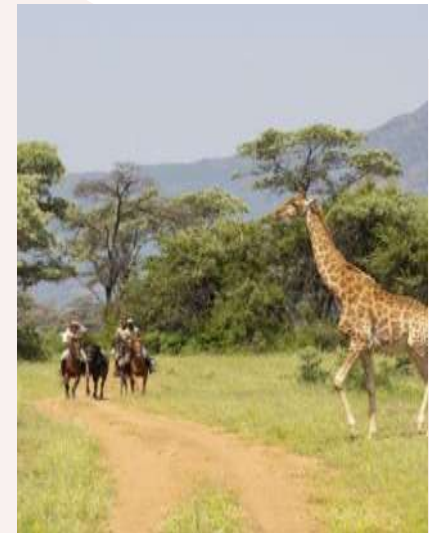
## Many Reptile, Insect and Bird Species



# ABOUT WELGEVONDEN

AFRICA

Known for its dramatic landscape



ANY QUESTIONS?

[INFO@GAPAFRICAPROJECTS.COM](mailto:INFO@GAPAFRICAPROJECTS.COM) | +44 (0)207 1937819

PROJECT PRESENTATION 32

# ABOUT THE PROJECT

AFRICA

## Bush Skills – Bush Walks, Tracking Wildlife



ANY QUESTIONS?

[INFO@GAPAFRICAPROJECTS.COM](mailto:INFO@GAPAFRICAPROJECTS.COM) | +44 (0)207 1937819

PROJECT PRESENTATION 33

# ABOUT THE PROJECT

AFRICA

## Research – Habitat and Prey Selection: Predators



ANY QUESTIONS?

[INFO@GAPAFRICAPROJECTS.COM](mailto:INFO@GAPAFRICAPROJECTS.COM) | +44 (0)207 1937819

PROJECT PRESENTATION 34

# ABOUT THE PROJECT

AFRICA

## Camera Trap – Research and Study



ANY QUESTIONS?

[INFO@GAPAFRICAPROJECTS.COM](mailto:INFO@GAPAFRICAPROJECTS.COM) | +44 (0)207 1937819

PROJECT PRESENTATION 35

# ABOUT THE PROJECT

AFRICA

## Anti-Poaching Unit



ANY QUESTIONS?

[INFO@GAPAFRICAPROJECTS.COM](mailto:INFO@GAPAFRICAPROJECTS.COM) | +44 (0)207 1937819

PROJECT PRESENTATION 36

## Monitoring the Welgevonden Rhino Population

Behavioural observations, body condition, herd structure, photos and GPS locations are recorded to document where the animals are on the reserve; keeping tabs on the localities and activities of Black and White Rhino on Welgevonden.



# ABOUT THE PROJECT

AFRICA

## Research – Elephant Monitoring



ANY QUESTIONS?

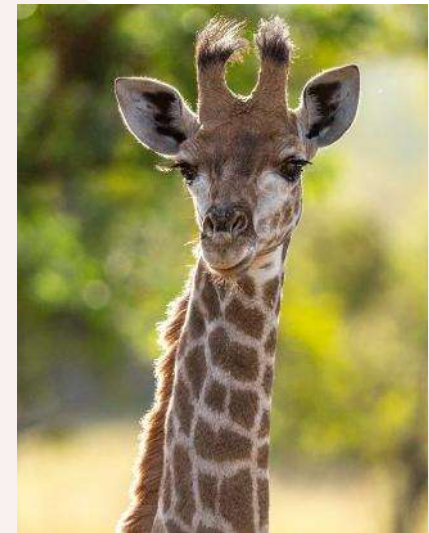
[INFO@GAPAFRICAPROJECTS.COM](mailto:INFO@GAPAFRICAPROJECTS.COM) | +44 (0)207 1937819

PROJECT PRESENTATION 38

# ABOUT THE PROJECT

AFRICA

## Monitoring Herbivore Condition and Health



ANY QUESTIONS?

[INFO@GAPAFRICAPROJECTS.COM](mailto:INFO@GAPAFRICAPROJECTS.COM) | +44 (0)207 1937819

PROJECT PRESENTATION 39

# ABOUT THE PROJECT

AFRICA

## Free-roaming Waterberg Wild Dog – Talks



ANY QUESTIONS?

[INFO@GAPAFRICAPROJECTS.COM](mailto:INFO@GAPAFRICAPROJECTS.COM) | +44 (0)207 1937819

PROJECT PRESENTATION 40



**AFRICA**

# ACCOMODATION & LIFESTYLE

Living in the African Bush

## Hanover Nature Reserve Accommodation

Students and academic groups will be accommodated at our purpose-built Camp Letimoga in Hanover Nature Reserve, designed to provide comfort and foster community living.

The camp features shared twin and triple rooms with communal ablution facilities. At the heart of the camp is a spacious communal area, equipped with a shared kitchen and dining space, which also serves as a hub for relaxation, lectures, and group activities.

For evening gatherings, there is a cosy firepit/boma area where students can unwind and cook meals over the fire under the stars. On weekends, groups are welcome to enjoy the main farmhouse and pool area.



## Hanover Nature Reserve Accommodation



## Welgevonden Accommodation

The student centre and camp is based on the reserve and boasts ten tents that sleep two people per tent in single beds, each tent also has lighting and electricity supply.

There are communal hot and cold showers and regular flushing toilets. The communal facilities include a lecture room, canteen, lounge, entertainment area and storage fridge.

The centre also has access to Wi-Fi and the camp is fenced off inside the boundaries of the reserve. Most evenings are spent at leisure around the camp.



## Food at the Project

Ingredients for three meals a day are provided, on a self cook basis. Students will take part in communal cooking and keeping the kitchen tidy. This creates a vibrant and social camp atmosphere.

All meals are provided in the communal dining room; there is an outside area for dining as well.

Some days lunch will be at the accommodation; other days lunch will be brought into the field to be taken as a picnic. This depends on the activities either planned or unscheduled.

## Dietary Requirements

Provision can be made for Vegetarian & Vegan diets and for those who have a medical condition such as Coeliac disease that requires a Gluten Free Diet and for those with severe allergies to dairy, eggs or nuts.



# ACCOMMODATION & LIFESTYLE



## Life on a Reserve



# WHY SHOULD I TRAVEL?

AFRICA

## What do previous travellers say about the Hanover Conservation Research Project?



"Staying at Hanover Nature reserve really **developed** my knowledge of animal behaviours."



"Everything **exceeded** my expectations, and the trip was **life-changing**."



"The staff were **amazing**, we got the **opportunity** to take part in practicals and demonstrations."

Reference: GAP Africa Projects Post Project Trip Questionnaire 23/24



**AFRICA**

# **BOOKING YOUR ADVENTURE**

The next steps to the trip of a  
lifetime!

# WHAT'S INCLUDED

AFRICA

## What is Included?

- Flights
- Transfers to/from project
- Accommodation
- Three meals per day (self-prepared)
- All activities as part of the project
- Airport meet/greet
- 24/7 In country support

## NOT Included

- UK Transfers
- Personal Travel Insurance \*
- Meals on travel days – before arriving & after departing from project
- Any activities not specified as part of the project
- Visas/travel documents
- Tips

\* We recommend that you take out personal travel insurance as soon as your booking is confirmed.



# THE NEXT STEPS

AFRICA



## Project dates & key deadlines

### Confirmed travel dates:

Depart UK: 14<sup>th</sup> March 2027 | Arrive SA: 15<sup>th</sup> March 2027

Depart SA: 28<sup>th</sup> March 2027 | Arrive UK: 29<sup>th</sup> March 2027

### Trip cost:

£2,455.00 – £2,575.00\* Based on a group of 18 (confirmed once flights have been held)

### Key deadlines are:

- Return online booking form by 15/02/2026
- Deposit payment, £300.00 by 25/02/2026
- 50% instalment payment paid by 23/11/2026
- Balance payment by 18/01/2027
- 01/03/2027 e-Tickets & final documents will be issued

# BOOKING YOUR ADVENTURE

AFRICA

## Booking Form

- Please submit by **15/02/2026**
- No deposit required at this stage of booking
- Passport fields not mandatory

## Key deadlines are:

- Deposit of £300 to confirm placement
- Instalment payment of 50% due 16 weeks before departure
- Balance payment due 8 weeks before departure

**GAP Africa Projects**

AFRICA PROJECTS | GLOBAL ADVENTURE PROJECTS | AFRICAN RIVAL PROJECTS | WHO WE ARE | BLOG | GET IN TOUCH

CALL: +44 (0)207 1937819 | EMAIL: INFO@GAPAFRICAPROJECTS.COM

### BOOKING FORM

(NB) Your name should be given as displayed on your passport

Title \*

Name \*

Date of birth \*

Address \*

Telephone \*

Mobile \*

Email 1 \*

Email 2 \*

(\*\*/NB Please note that all booking correspondence will be sent via Email\*\*)

Passport no.

Passport Issue Date

# THE NEXT STEPS

AFRICA

## Confirmation Documents

Confirmation documents will be issued and sent directly to you via email.

Please communicate with us with any questions relating to the field trip.

**Dear Chloe,**

Thank you for agreeing to book with Gap Africa Projects as part of the 6x hotel Chicago trip to Zulu and Conservation Research. Please take the time to look through this document and check that everything is correct.

We have received your deposit payment and your payment is now confirmed upon the details below. The final balance and due date is detailed on your invoice.

Please remember that you can contact me to discuss anything in this document as well as any other aspect of your reservation and I am so glad to be your personal travel advisor for the entirety of your placement.

Warm regards,  
The GAP Africa Team

**Passengers Travelling**  
Miss Chloe  
Placement(s)  
Zulu Land Conservation Research (04/03/23 - 18/03/23)

**Inclusions**  
Flights, shared road transfers to and from Project, accommodation for duration, all meals and all project activities.

**Exclusions**  
Insurance: any activities undertaken that are not included in part of the project.

**Your Flight(s)**

01/03/2023	01:15:00	Manchester (MAN)
04/03/2023	08:30:00	London Heathrow (LHR)
05/03/2023	01:18:00	London Heathrow (LHR)
04/03	07:25 + 1 D	Frankfurt (FRA)
18/03/2023	01:20:15	Frankfurt (FRA)
04/03	07:50 + 1 D	London Heathrow (LHR)
19/03/2023	01:00:15	London Heathrow (LHR)
04/03	01:19:40	Manchester (MAN)

**Your Booking**  
Travel Advice  
Names and spellings  
Passport expiry date  
Passport Copies  
Travel insurance

mark.booth@gap-africa-projects.com  
+44 (0) 207 193 7819

**CONFIRMATION INVOICE**

Gap Africa Projects  
100, 101, 102, 103, 104, 105, 106, 107, 108, 109, 110, 111, 112, 113, 114, 115, 116, 117, 118, 119, 120, 121, 122, 123, 124, 125, 126, 127, 128, 129, 130, 131, 132, 133, 134, 135, 136, 137, 138, 139, 140, 141, 142, 143, 144, 145, 146, 147, 148, 149, 150, 151, 152, 153, 154, 155, 156, 157, 158, 159, 160, 161, 162, 163, 164, 165, 166, 167, 168, 169, 170, 171, 172, 173, 174, 175, 176, 177, 178, 179, 180, 181, 182, 183, 184, 185, 186, 187, 188, 189, 190, 191, 192, 193, 194, 195, 196, 197, 198, 199, 200, 201, 202, 203, 204, 205, 206, 207, 208, 209, 210, 211, 212, 213, 214, 215, 216, 217, 218, 219, 220, 221, 222, 223, 224, 225, 226, 227, 228, 229, 230, 231, 232, 233, 234, 235, 236, 237, 238, 239, 240, 241, 242, 243, 244, 245, 246, 247, 248, 249, 250, 251, 252, 253, 254, 255, 256, 257, 258, 259, 260, 261, 262, 263, 264, 265, 266, 267, 268, 269, 270, 271, 272, 273, 274, 275, 276, 277, 278, 279, 280, 281, 282, 283, 284, 285, 286, 287, 288, 289, 290, 291, 292, 293, 294, 295, 296, 297, 298, 299, 300, 301, 302, 303, 304, 305, 306, 307, 308, 309, 310, 311, 312, 313, 314, 315, 316, 317, 318, 319, 320, 321, 322, 323, 324, 325, 326, 327, 328, 329, 330, 331, 332, 333, 334, 335, 336, 337, 338, 339, 340, 341, 342, 343, 344, 345, 346, 347, 348, 349, 350, 351, 352, 353, 354, 355, 356, 357, 358, 359, 360, 361, 362, 363, 364, 365, 366, 367, 368, 369, 370, 371, 372, 373, 374, 375, 376, 377, 378, 379, 380, 381, 382, 383, 384, 385, 386, 387, 388, 389, 390, 391, 392, 393, 394, 395, 396, 397, 398, 399, 400, 401, 402, 403, 404, 405, 406, 407, 408, 409, 410, 411, 412, 413, 414, 415, 416, 417, 418, 419, 420, 421, 422, 423, 424, 425, 426, 427, 428, 429, 430, 431, 432, 433, 434, 435, 436, 437, 438, 439, 440, 441, 442, 443, 444, 445, 446, 447, 448, 449, 450, 451, 452, 453, 454, 455, 456, 457, 458, 459, 460, 461, 462, 463, 464, 465, 466, 467, 468, 469, 470, 471, 472, 473, 474, 475, 476, 477, 478, 479, 480, 481, 482, 483, 484, 485, 486, 487, 488, 489, 490, 491, 492, 493, 494, 495, 496, 497, 498, 499, 500, 501, 502, 503, 504, 505, 506, 507, 508, 509, 510, 511, 512, 513, 514, 515, 516, 517, 518, 519, 520, 521, 522, 523, 524, 525, 526, 527, 528, 529, 530, 531, 532, 533, 534, 535, 536, 537, 538, 539, 540, 541, 542, 543, 544, 545, 546, 547, 548, 549, 550, 551, 552, 553, 554, 555, 556, 557, 558, 559, 560, 561, 562, 563, 564, 565, 566, 567, 568, 569, 570, 571, 572, 573, 574, 575, 576, 577, 578, 579, 580, 581, 582, 583, 584, 585, 586, 587, 588, 589, 590, 591, 592, 593, 594, 595, 596, 597, 598, 599, 600, 601, 602, 603, 604, 605, 606, 607, 608, 609, 610, 611, 612, 613, 614, 615, 616, 617, 618, 619, 620, 621, 622, 623, 624, 625, 626, 627, 628, 629, 630, 631, 632, 633, 634, 635, 636, 637, 638, 639, 640, 641, 642, 643, 644, 645, 646, 647, 648, 649, 650, 651, 652, 653, 654, 655, 656, 657, 658, 659, 660, 661, 662, 663, 664, 665, 666, 667, 668, 669, 670, 671, 672, 673, 674, 675, 676, 677, 678, 679, 680, 681, 682, 683, 684, 685, 686, 687, 688, 689, 690, 691, 692, 693, 694, 695, 696, 697, 698, 699, 700, 701, 702, 703, 704, 705, 706, 707, 708, 709, 710, 711, 712, 713, 714, 715, 716, 717, 718, 719, 720, 721, 722, 723, 724, 725, 726, 727, 728, 729, 730, 731, 732, 733, 734, 735, 736, 737, 738, 739, 740, 741, 742, 743, 744, 745, 746, 747, 748, 749, 750, 751, 752, 753, 754, 755, 756, 757, 758, 759, 760, 761, 762, 763, 764, 765, 766, 767, 768, 769, 770, 771, 772, 773, 774, 775, 776, 777, 778, 779, 780, 781, 782, 783, 784, 785, 786, 787, 788, 789, 790, 791, 792, 793, 794, 795, 796, 797, 798, 799, 800, 801, 802, 803, 804, 805, 806, 807, 808, 809, 810, 811, 812, 813, 814, 815, 816, 817, 818, 819, 820, 821, 822, 823, 824, 825, 826, 827, 828, 829, 830, 831, 832, 833, 834, 835, 836, 837, 838, 839, 840, 841, 842, 843, 844, 845, 846, 847, 848, 849, 850, 851, 852, 853, 854, 855, 856, 857, 858, 859, 860, 861, 862, 863, 864, 865, 866, 867, 868, 869, 870, 871, 872, 873, 874, 875, 876, 877, 878, 879, 880, 881, 882, 883, 884, 885, 886, 887, 888, 889, 890, 891, 892, 893, 894, 895, 896, 897, 898, 899, 900, 901, 902, 903, 904, 905, 906, 907, 908, 909, 910, 911, 912, 913, 914, 915, 916, 917, 918, 919, 920, 921, 922, 923, 924, 925, 926, 927, 928, 929, 930, 931, 932, 933, 934, 935, 936, 937, 938, 939, 940, 941, 942, 943, 944, 945, 946, 947, 948, 949, 950, 951, 952, 953, 954, 955, 956, 957, 958, 959, 960, 961, 962, 963, 964, 965, 966, 967, 968, 969, 970, 971, 972, 973, 974, 975, 976, 977, 978, 979, 980, 981, 982, 983, 984, 985, 986, 987, 988, 989, 990, 991, 992, 993, 994, 995, 996, 997, 998, 999, 1000.

**ATOL Certificate**

This confirms that your money is protected by the ATOL scheme and that you can get home if your travel company collapses.

This certificate sets out how the ATOL scheme will protect the people named on it for the parts of their trip listed below.

**Who is protected?** Number of passengers: 10

**What is protected?**

You can find more detailed information on your booking, including prices, on the confirmation you will receive from Gap Africa Projects Limited.

**Who is protecting your trip?**  
Gap Africa Projects Limited ATOL Number 10890

**Your protection**  
You are protected from when you were given this certificate to the end of your trip.  
If Gap Africa Projects Limited stops trading, the passengers named above will either:  
1 complete their trip and return to the UK, or  
2 receive a refund.  
Your protection depends on the terms of the ATOL scheme (available at [www.atol.org.uk](http://www.atol.org.uk)).

If Gap Africa Projects Limited stops trading, you must follow the instructions at [www.atol.org.uk](http://www.atol.org.uk) (where there will be details of arrangements to bring people back to the UK, and information on how people can claim their money back) or you can call (444) 20 7463 6360.

Unique reference number	Date of issue	ATOL Certificate issuer	ATOL number	Package sale
4413	19/10/2022	Gap Africa Projects Ltd	10890	

[Click here to view all available flights](#)

# BOOKING YOUR ADVENTURE

AFRICA

## Group Web Page

<https://gapafricaprojects.com/27-4837/>



## Booking Form

<https://gapafricaprojects.com/booking-form-27-4837-wes-swb-weston-college/>



**BOOKING FORM**

Your Global Adventure Starts here!

Please use the form below to submit your provisional booking to your selected project. You have the option to pay your initial deposit with the submission of your booking form, or we will contact you for payment once your project placement has been secured.

If you'd like to contact us to ask any initial questions or find out more about what project you'd like to go on and when, you can get also get in touch using our short enquiry form, or by calling +44 (0) 207 193 7819.

(NB: Your name should be given as displayed on your passport)

Title \*

Name \*

Date of birth \*

Address \*

## Sustainability & Social, Economic Responsibility

**Local employment from rural communities** – our project partners employ a high percentage of staff from local communities. They advocate training to advance careers in hospitality, wildlife and conservation.

**Low environmental impact camps** – our project bush camps are built with minimal impact on the environment. Resources from the surrounding area are utilised for buildings, water is (where possible) pumped from local river sources and green energy supplies, such as solar are championed.

**Community donations and support** – we encourage all our international study groups to be proactive in donation collections and arrange for excess baggage for said donations to be taken out to South Africa in support of the local communities.

**Move Africa, supporting young females** – 3 in 10 girls in South Africa miss a week of school every month because they cannot afford basic sanitary products. Our project partners work with Move Africa alongside their partner NGOs, to distribute menstrual cups to the local communities and provide education workshops.

**Rhino Art** – Project rhino realises the enormous responsibility the youth have to ensure our wildlife is protected for many generations to come. They ensure they can reach and educate as many kids as possible through Rhino Art, using art workshops to teach about conservation. This initiative is supported by our local project partners.

**Food/crop education** – our project partners encourage food and crop education to rural communities, where cost of living to low income families and distance travelled to obtain basic resources can prove problematic. Projects include community allotments and providing education on best practice for crop rotations, harvest seasons and nutrition.

**Recycling workshops** – Litter, and in particular plastics, is a major issue and threat to the ecosystem in Southern Africa. Rural communities have limited waste removal available and it is therefore a problem escalating at an alarming rate. Recycling workshops are provided through local schools to help educate children on the importance of correctly disposing of litter and recycling plastics.



**GLOBAL** reach. **ADVENTURE** for all. **PROJECTS** to inspire.

Explore our network of Global Adventure Projects:



[GLOBALADVENTUREPROJECTS.COM](http://GLOBALADVENTUREPROJECTS.COM)

