



DUCHY COLLEGE STOKE CLIMSLAND PROJECT PRESENTATION



Sibuya Conservation Experience



GLOBAL reach. **ADVENTURE** for all. **PROJECTS** to inspire.

ABOUT US:

AFRICA

GAP Africa Projects

- We are a specialised travel company that offers academic trips and volunteering opportunities for groups and individual travellers, in a number of locations worldwide
- We pride ourselves on curating experiences which are personalised to your needs and requirements
- Our first project travelled in 2012
- Full ATOL Bonding
- Working with over 55 Colleges and Universities around the UK
- A small dedicated team in the UK and South Africa





AFRICA

ABOUT SIBUYA GAME RESERVE

Project overview and
location

ABOUT SIBUYA GAME RESERVE

AFRICA

Your Conservation Field Trip Explained

- A unique conservation experience based in South Africa
- Live on a Wild African Game Reserve
- The opportunity to experience hands on wildlife conservation
- Working behind the scenes on a Game Reserve in Africa
- Tailor made projects to suit your needs and interests
- Project Activities include:
 - Pioneering Conservation Research
 - Conservation Activities
 - Adventure and Excitement
- The most incredible wildlife experience you will ever have

ABOUT SIBUYA GAME RESERVE

AFRICA

What is a Game Reserve?

- A game reserve is a large area of protected land where wild animals can live safely.
- Wildlife is free roaming throughout the reserve allowing them to thrive in their natural habitat.
- Reserves are either Government Owned (National Parks) or Privately Owned/Managed.
- Most reserves will have physical boundaries i.e. electrified fence line.
- Due to physical boundaries, wildlife must be managed due to restraints on population growth, migration and resources.
- Wildlife is protected but also utilised as a tourist attraction (Eco Tourism) which creates funding for conservation efforts and research.



ABOUT SIBUYA

AFRICA

Sibuya Game Reserve – Location



ABOUT SIBUYA GAME RESERVE

Sibuya Game Reserve Location

AFRICA



ANY QUESTIONS?

INFO@GAPAFRICAPROJECTS.COM | +44 (0)207 1937819

PROJECT PRESENTATION 7

ABOUT SIBUYA GAME RESERVE

AFRICA

Home to the **BIG 5**



ANY QUESTIONS?

INFO@GAPAFRICAPROJECTS.COM | +44 (0)207 1937819

PROJECT PRESENTATION 8

ABOUT SIBUYA GAME RESERVE

AFRICA

Home to over 45 Species of Mammal



ABOUT SIBUYA RESERVE

AFRICA

Bontebok





AFRICA

ABOUT THE PROJECT

Our conservation work in more detail

Your Conservation Programme

- Lion monitoring
- Elephant monitoring
- Rhino monitoring
- Fencing and Alien Plant clearing
- Community Outreach
- Coastal Dunes and Rocky Shores
- Kayaking
- Insect Identification
- Possible veterinary interactions

Presentations and Talks on:

- Lion Conservation
- Elephant Ecology
- Rhino Conservation
- Ornithology (Birds)

ABOUT THE PROJECT

AFRICA

Research – Elephant Monitoring



ANY QUESTIONS?

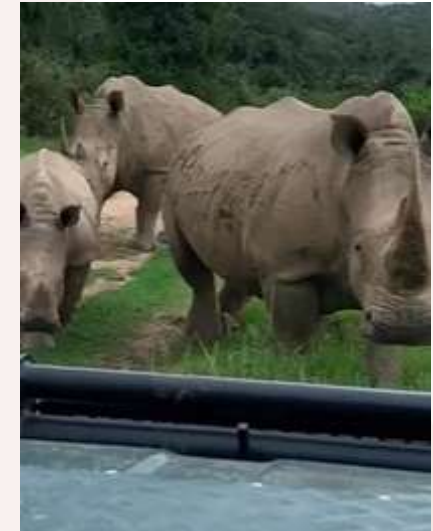
INFO@GAPAFRICAPROJECTS.COM | +44 (0)207 1937819

PROJECT PRESENTATION 13

ABOUT THE PROJECT

AFRICA

Research – Rhino Tracking



ANY QUESTIONS?

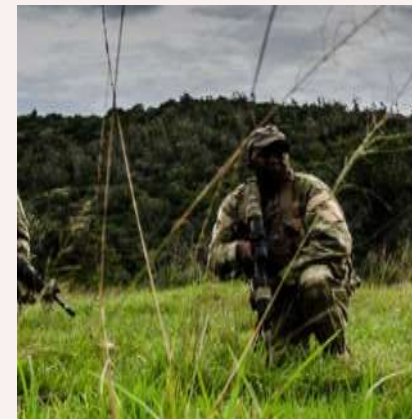
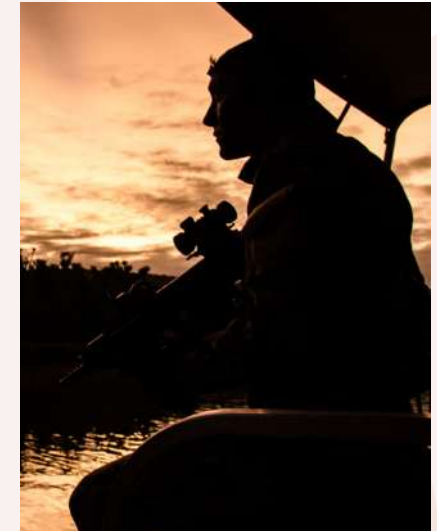
INFO@GAPAFRICAPROJECTS.COM | +44 (0)207 1937819

PROJECT PRESENTATION 14

ABOUT THE PROJECT

AFRICA

Anti - Poaching



ANY QUESTIONS?

INFO@GAPAFRICAPROJECTS.COM | +44 (0)207 1937819

PROJECT PRESENTATION 15

ABOUT THE PROJECT

AFRICA

Research – Habitat and Prey Selection: Predators



ANY QUESTIONS?

INFO@GAPAFRICAPROJECTS.COM | +44 (0)207 1937819

PROJECT PRESENTATION 16

ABOUT THE PROJECT

AFRICA

Reserve Maintenance



ABOUT THE PROJECT

AFRICA

Camera Trap – Research and Study



ABOUT THE PROJECT

AFRICA

Night Game Drives



ANY QUESTIONS?

INFO@GAPAFRICAPROJECTS.COM | +44 (0)207 1937819

PROJECT PRESENTATION 19

ABOUT THE PROJECT

AFRICA

Possible Veterinary Interactions



ANY QUESTIONS?

INFO@GAPAFRICAPROJECTS.COM | +44 (0)207 1937819

PROJECT PRESENTATION 20

ABOUT THE PROJECT

AFRICA

Alexandria Dune Trail 7km & Coastal Dunes and Rocky Shores



ABOUT THE PROJECT

AFRICA

River Activities



ANY QUESTIONS?

INFO@GAPAFRICAPROJECTS.COM | +44 (0)207 1937819

PROJECT PRESENTATION 22

ABOUT THE PROJECT

AFRICA

Community Engagement Days



ANY QUESTIONS?

INFO@GAPAFRICAPROJECTS.COM | +44 (0)207 1937819

PROJECT PRESENTATION 23

ABOUT THE PROJECT

AFRICA

Community – GAP Donation Bags



ANY QUESTIONS?

INFO@GAPAFRICAPROJECTS.COM | +44 (0)207 1937819

PROJECT PRESENTATION 24



AFRICA

ONLINE NATURE GUIDE COURSE

Bushwise

ONLINE NATURE GUIDE COURSE

AFRICA

Exclusive Bushwise Nature Guide Course

Bushwise is a leading nature guide training provider, and we've partnered with them to offer an exclusive 6-week 'Explore Nature' online course – giving you a real-life insight into the training of a South African Nature Guide.

Connect with the South African bush before you even travel!



Modules include Introduction, Geology, Weather & climate, Astronomy, Ecology, Biomes, Taxonomy, Plants, Arthropods, Fish, Amphibians, Reptiles, Birds, Mammals, Ethology, Conservation management, Historical human habitation.

Your wildlife journey starts here! Build a strong foundation in field guiding, wildlife, and ecology, so that you're fully prepared for the hands-on experience in South Africa.

Course Start Dates:

5 January 2026

30 March 2026

22 June 2026

14 September 2026





WEEKEND EXCURSIONS

Your free time on the project



WEEKEND EXCURSIONS

AFRICA



**Saturday: beach
and town visit
(Pizza Lunch o/a)**

**Sunday: chill day
at lodge**

**Saturday:
SANCOBB visit**





AFRICA

ONLINE NATURE GUIDE COURSE

Bushwise

ONLINE NATURE GUIDE COURSE

AFRICA

Exclusive Bushwise Nature Guide Course

Bushwise is a leading nature guide training provider, and we've partnered with them to offer an exclusive 6-week 'Explore Nature' online course – giving you a real-life insight into the training of a South African Nature Guide.

Connect with the South African bush before you even travel!

Modules include Introduction, Geology, Weather & climate, Astronomy, Ecology, Biomes, Taxonomy, Plants, Arthropods, Fish, Amphibians, Reptiles, Birds, Mammals, Ethology, Conservation management, Historical human habitation.

Your wildlife journey starts here! Build a strong foundation in field guiding, wildlife, and ecology, so that you're fully prepared for the hands-on experience in South Africa.



Course Start Dates:

5 January 2026

30 March 2026

22 June 2026

14 September 2026





AFRICA

ACCOMMODATION & LIFESTYLE

Life in the African Bush

ACCOMMODATION & LIFESTYLE

AFRICA

Intaka Bird Lodge



ANY QUESTIONS?

INFO@GAPAFRICAPROJECTS.COM | +44 (0)207 1937819

PROJECT PRESENTATION 32

ACCOMMODATION

AFRICA

Food at the project

Three meals are provided a day prepared by the kitchen staff.

Breakfasts will consist of toast and cereals; lunch may include pasta, wraps, burgers, stir fry; dinners include meat, fish and vegetables with rice, potatoes or pasta.

Please advise us of any dietary requirements in advance so we can ensure that you are adequately catered for.



ACCOMMODATION & LIFESTYLE

AFRICA

Life on the Reserve



ANY QUESTIONS?

INFO@GAPAFRICAPROJECTS.COM | +44 (0)207 1937819

PROJECT PRESENTATION 34

ACCOMMODATION & LIFESTYLE

AFRICA

Life on the Reserve



ANY QUESTIONS?

INFO@GAPAFRICAPROJECTS.COM | +44 (0)207 1937819

PROJECT PRESENTATION 35

ACCOMMODATION & LIFESTYLE

AFRICA

A true life experience



ANY QUESTIONS?

INFO@GAPAFRICAPROJECTS.COM | +44 (0)207 1937819

ACCOMMODATION & LIFESTYLE

AFRICA

A true life experience



ANY QUESTIONS?

INFO@GAPAFRICAPROJECTS.COM | +44 (0)207 1937819

PROJECT PRESENTATION 37



AFRICA

BOOKING YOUR ADVENTURE

The next steps to the trip of a
lifetime!

WHY SHOULD I TRAVEL?

AFRICA

What do previous travellers say about the Sibuya Conservation Expedition?



"It was the most **amazing** experience I've ever had."



"I learnt so many new things that have **educated** me **beyond** classroom curriculum."



"There wasn't a single experience that didn't **amaze** me and make me feel **enriched**."

Reference: GAP Africa Projects Post Project Trip Questionnaire 23/24

WHY SHOULD I TRAVEL?

AFRICA

What do previous travellers say about the Sibuya Conservation Expedition?



"Being able to **learn more** about the animals on the game reserve and **understand more** about the risks that the animals face."



"The guest lectures were **great** and the talks about poaching were very **insightful**."



"Our guide was **amazing**, we got the **opportunity** to take part in talks and demonstrations by APU."

Reference: GAP Africa Projects Post Project Trip Questionnaire 23/24

THE NEXT STEPS

AFRICA



Project dates & key deadlines

Confirmed travel dates:

Depart UK: 21st June 2026 | Arrive SA: 22nd June 2026

Depart SA: 4th July 2026 | Arrive UK: 5th July 2026

Trip cost:

£2,649.00* Based on a group of 18 (confirmed once flights have been held)

Key deadlines are:

- Return online booking form by 25/09/2025
- Deposit payment, £300.00 by 10/10/2025
- 50% instalment payment of £1174.50 to be paid by 02/03/2026
- Balance payment of £1174.50 to be paid by 27/04/2026
- 08/06/2026 e-Tickets & final documents will be issued

WHAT'S INCLUDED

AFRICA

What is Included?

- Flights
- Transfers to/from project
- Accommodation
- Three meals per day
- All activities as part of the project
- Airport meet/greet
- 24/7 In country support

NOT Included

- Personal Travel Insurance *
- Meals on travel days – before arriving & after departing from project
- Any activities not specified as part of the project
- Visas/travel documents
- Tips

* We recommend that you take out personal travel insurance as soon as your booking is confirmed.



BOOKING YOUR ADVENTURE

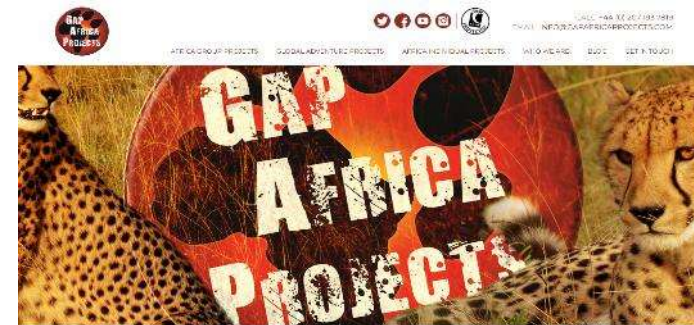
AFRICA

Booking Form

- Please submit by 25/09/2025
- No deposit required at this stage of booking
- Passport fields not mandatory

Key deadlines are:

- Deposit of £300 to confirm placement
- Instalment payment of 50% due 16 weeks before departure
- Balance payment due 8 weeks before departure



BOOKING FORM

(NB) Your name should be given as displayed on your passport

Title *

Name *

Date of birth *

Address *

Telephone *

Mobils *

Email 1 *

Email 2 *

(**NB Please note that all booking correspondence will be sent via Email**)

Passport no.

Passport Issue Date

THE NEXT STEPS

AFRICA

Confirmation Documents

Confirmation documents will be issued and sent directly to you via email.

Please communicate with us with any questions relating to the field trip.



Dear Chloe,

Thank you for agreeing to book with Gap Africa Projects as part of the 6x hotel Chicago trip to Zulu and Conservation Research. Please take the time to look through this document and check that everything is correct.

We have received your deposit payment and your payment is now confirmed as per the details below. The final balance and due date is detailed on your invoice.

Please remember that you can contact me to discuss anything in this document as well as any other aspect of your expedition and I am on hand as your personal travel advisor for the entirety of your placement.

Warm regards,
The GAP Africa Team

Passengers Travelling
Miss Chloe
Placement(s)
Zulu Land Conservation Research (04/03/23 - 18/03/23)

Inclusions
Flights, shared road transfers to and from Project, accommodation for duration, all meals and all project activities.

Exclusions
Insurance: any activities undertaken that are not included in part of the project.

Your Flight(s)

Flight	Class	Time	From	To
01/03/2023	D	15:00	Manchester (MAN)	
04/03/2023	A	10:00	London Heathrow (LHR)	
05/03/2023	D	18:20	London Heathrow (LHR)	
06/03	A	07:25 + 1 D	Johannesburg (JNB)	
10/03/2023	D	20:15	Johannesburg (JNB)	
06/03	A	05:50 + 1 D	London Heathrow (LHR)	
13/03/2023	D	09:05	London Heathrow (LHR)	
04/03/2023	A	19:40	Manchester (MAN)	

Your Booking
Travel Advice
Names and spellings
Passport expiry date
Passport Copies
Travel insurance

mark.bott@gapafricaprojects.com
+44 (0) 207 193 7819



CONFIRMATION INVOICE

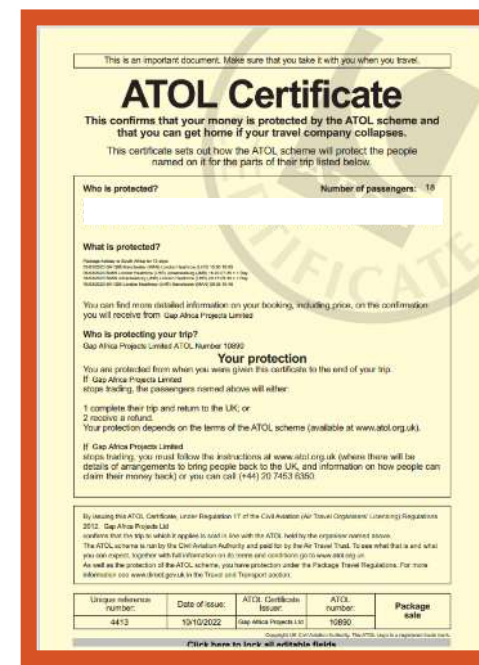
Gap Africa Projects
100 Victoria Road
London E16 1JH
United Kingdom
Tel: +44 (0) 207 193 7819
Email: info@gapafricaprojects.com

Invoice No: 23-001-001-00-00
Invoice Date: 04/03/2023
Invoice To: Miss Chloe

Item	Description	Quantity	Unit Price	Total Price
01	Flight	1	£1,200.00	£1,200.00
02	Accommodation	1	£1,000.00	£1,000.00
03	Meals	1	£500.00	£500.00
04	Transport	1	£300.00	£300.00
05	Insurance	1	£200.00	£200.00
06	Project Fee	1	£1,000.00	£1,000.00
07	Travel Insurance	1	£200.00	£200.00
08	Project Fee	1	£1,000.00	£1,000.00
09	Travel Insurance	1	£200.00	£200.00
10	Project Fee	1	£1,000.00	£1,000.00
11	Travel Insurance	1	£200.00	£200.00
12	Project Fee	1	£1,000.00	£1,000.00
13	Travel Insurance	1	£200.00	£200.00
14	Project Fee	1	£1,000.00	£1,000.00
15	Travel Insurance	1	£200.00	£200.00
16	Project Fee	1	£1,000.00	£1,000.00
17	Travel Insurance	1	£200.00	£200.00
18	Project Fee	1	£1,000.00	£1,000.00
19	Travel Insurance	1	£200.00	£200.00
20	Project Fee	1	£1,000.00	£1,000.00
21	Travel Insurance	1	£200.00	£200.00
22	Project Fee	1	£1,000.00	£1,000.00
23	Travel Insurance	1	£200.00	£200.00
24	Project Fee	1	£1,000.00	£1,000.00
25	Travel Insurance	1	£200.00	£200.00
26	Project Fee	1	£1,000.00	£1,000.00
27	Travel Insurance	1	£200.00	£200.00
28	Project Fee	1	£1,000.00	£1,000.00
29	Travel Insurance	1	£200.00	£200.00
30	Project Fee	1	£1,000.00	£1,000.00
31	Travel Insurance	1	£200.00	£200.00
32	Project Fee	1	£1,000.00	£1,000.00
33	Travel Insurance	1	£200.00	£200.00
34	Project Fee	1	£1,000.00	£1,000.00
35	Travel Insurance	1	£200.00	£200.00
36	Project Fee	1	£1,000.00	£1,000.00
37	Travel Insurance	1	£200.00	£200.00
38	Project Fee	1	£1,000.00	£1,000.00
39	Travel Insurance	1	£200.00	£200.00
40	Project Fee	1	£1,000.00	£1,000.00
41	Travel Insurance	1	£200.00	£200.00
42	Project Fee	1	£1,000.00	£1,000.00
43	Travel Insurance	1	£200.00	£200.00
44	Project Fee	1	£1,000.00	£1,000.00
45	Travel Insurance	1	£200.00	£200.00
46	Project Fee	1	£1,000.00	£1,000.00
47	Travel Insurance	1	£200.00	£200.00
48	Project Fee	1	£1,000.00	£1,000.00
49	Travel Insurance	1	£200.00	£200.00
50	Project Fee	1	£1,000.00	£1,000.00
51	Travel Insurance	1	£200.00	£200.00
52	Project Fee	1	£1,000.00	£1,000.00
53	Travel Insurance	1	£200.00	£200.00
54	Project Fee	1	£1,000.00	£1,000.00
55	Travel Insurance	1	£200.00	£200.00
56	Project Fee	1	£1,000.00	£1,000.00
57	Travel Insurance	1	£200.00	£200.00
58	Project Fee	1	£1,000.00	£1,000.00
59	Travel Insurance	1	£200.00	£200.00
60	Project Fee	1	£1,000.00	£1,000.00
61	Travel Insurance	1	£200.00	£200.00
62	Project Fee	1	£1,000.00	£1,000.00
63	Travel Insurance	1	£200.00	£200.00
64	Project Fee	1	£1,000.00	£1,000.00
65	Travel Insurance	1	£200.00	£200.00
66	Project Fee	1	£1,000.00	£1,000.00
67	Travel Insurance	1	£200.00	£200.00
68	Project Fee	1	£1,000.00	£1,000.00
69	Travel Insurance	1	£200.00	£200.00
70	Project Fee	1	£1,000.00	£1,000.00
71	Travel Insurance	1	£200.00	£200.00
72	Project Fee	1	£1,000.00	£1,000.00
73	Travel Insurance	1	£200.00	£200.00
74	Project Fee	1	£1,000.00	£1,000.00
75	Travel Insurance	1	£200.00	£200.00
76	Project Fee	1	£1,000.00	£1,000.00
77	Travel Insurance	1	£200.00	£200.00
78	Project Fee	1	£1,000.00	£1,000.00
79	Travel Insurance	1	£200.00	£200.00
80	Project Fee	1	£1,000.00	£1,000.00
81	Travel Insurance	1	£200.00	£200.00
82	Project Fee	1	£1,000.00	£1,000.00
83	Travel Insurance	1	£200.00	£200.00
84	Project Fee	1	£1,000.00	£1,000.00
85	Travel Insurance	1	£200.00	£200.00
86	Project Fee	1	£1,000.00	£1,000.00
87	Travel Insurance	1	£200.00	£200.00
88	Project Fee	1	£1,000.00	£1,000.00
89	Travel Insurance	1	£200.00	£200.00
90	Project Fee	1	£1,000.00	£1,000.00
91	Travel Insurance	1	£200.00	£200.00
92	Project Fee	1	£1,000.00	£1,000.00
93	Travel Insurance	1	£200.00	£200.00
94	Project Fee	1	£1,000.00	£1,000.00
95	Travel Insurance	1	£200.00	£200.00
96	Project Fee	1	£1,000.00	£1,000.00
97	Travel Insurance	1	£200.00	£200.00
98	Project Fee	1	£1,000.00	£1,000.00
99	Travel Insurance	1	£200.00	£200.00
100	Project Fee	1	£1,000.00	£1,000.00

Total cost of the arrangement in great detail
£1,000.00

ATOL Certificate
ATOL Certificate number: 4413
ATOL Certificate issuer: Gap Africa Projects Ltd
ATOL Certificate number: 10890



This is an important document. Make sure that you take it with you when you travel.

ATOL Certificate

This confirms that your money is protected by the ATOL scheme and that you can get home if your travel company collapses.

This certificate sets out how the ATOL scheme will protect the people named on it for the parts of their trip listed below.

Who is protected? Number of passengers: 10

What is protected?

You can find more detailed information on your booking, including prices, on the confirmation you will receive from Gap Africa Projects Limited.

Who is protecting your trip?
Gap Africa Projects Limited ATOL Number 10890

Your protection
You are protected from when you were given this certificate to the end of your trip. If Gap Africa Projects Limited ceases trading, the passengers named above will either:

- 1 complete their trip and return to the UK; or
- 2 receive a refund.

Your protection depends on the terms of the ATOL scheme (available at www.atol.org.uk).

If Gap Africa Projects Limited ceases trading, you must follow the instructions at www.atol.org.uk (where there will be details of arrangements to bring people back to the UK, and information on how people can claim their money back) or you can call (44) 20 7463 6360.

By issuing this ATOL Certificate, under Regulation 17 of the Civil Aviation (Air Travel Organisations' Licensing) Regulations 2012, Gap Africa Projects Ltd certifies that the trip to which it applies is sold in line with the ATOL held by the organiser named above.

The ATOL scheme is run by the Civil Aviation Authority and paid for by the Air Travel Trust. To see what that is and what you can expect, together with full information on its terms and conditions go to www.atol.org.uk.

As well as the protection of the ATOL scheme, you have protection under the Package Travel Regulations. For more information see www.direct.gov.uk in the Travel and Transport section.

Unique reference number:	Date of issue:	ATOL Certificate issuer:	ATOL Certificate number:	Package sale
4413	19/10/2022	Gap Africa Projects Ltd	10890	

[Click here to view all available flights](#)

BOOKING YOUR ADVENTURE

AFRICA

Group Web Page

<https://gapafricaprojects.com/26-4783/>



Booking Form

<https://gapafricaprojects.com/booking-form-26-4783-dsc-sib-duchy-college-stoke-climsland/>



BOOKING FORM

"Your Global Adventure Starts here!"

Please use the form below to submit your provisional booking to your selected project. You have the option to pay your initial deposit with the submission of your booking form, or we will contact you for payment once your project placement has been secured.

If you'd like to contact us to ask any initial questions or find out more about what project you'd like to go on and when, you can get also get in touch using our short enquiry form, or by calling +44 (0) 207 193 7819.

(NB: Your name should be given as displayed on your passport)

Title *

Name *

Date of birth *

Address *

Sustainability & Social, Economic Responsibility

Local employment from rural communities – our project partners employ a high percentage of staff from local communities. They advocate training to advance careers in hospitality, wildlife and conservation.

Low environmental impact camps – our project bush camps are built with minimal impact on the environment. Resources from the surrounding area are utilised for buildings, water is (where possible) pumped from local river sources and green energy supplies, such as solar are championed.

Community donations and support – we encourage all our international study groups to be proactive in donation collections and arrange for excess baggage for said donations to be taken out to South Africa in support of the local communities.

Move Africa, supporting young females – 3 in 10 girls in South Africa miss a week of school every month because they cannot afford basic sanitary products. Our project partners work with Move Africa alongside their partner NGOs, to distribute menstrual cups to the local communities and provide education workshops.

Rhino Art – Project rhino realises the enormous responsibility the youth have to ensure our wildlife is protected for many generations to come. They ensure they can reach and educate as many kids as possible through Rhino Art, using art workshops to teach about conservation. This initiative is supported by our local project partners.

Food/crop education – our project partners encourage food and crop education to rural communities, where cost of living to low income families and distance travelled to obtain basic resources can prove problematic. Projects include community allotments and providing education on best practice for crop rotations, harvest seasons and nutrition.

Recycling workshops – Litter, and in particular plastics, is a major issue and threat to the ecosystem in Southern Africa. Rural communities have limited waste removal available and it is therefore a problem escalating at an alarming rate. Recycling workshops are provided through local schools to help educate children on the importance of correctly disposing of litter and recycling plastics.



GLOBAL reach. **ADVENTURE** for all. **PROJECTS** to inspire.

Explore our network of Global Adventure Projects:



GLOBALADVENTUREPROJECTS.COM

