



DUCHY COLLEGE (ROSEWARNE) Q&A PRESENTATION



KwaZulu-Natal Wildlife & Community

GLOBAL reach. **ADVENTURE** for all. **PROJECTS** to inspire.





AFRICA

ABOUT THE PROJECT

Overview and location
of the project

ABOUT THE PROJECT

AFRICA

Location

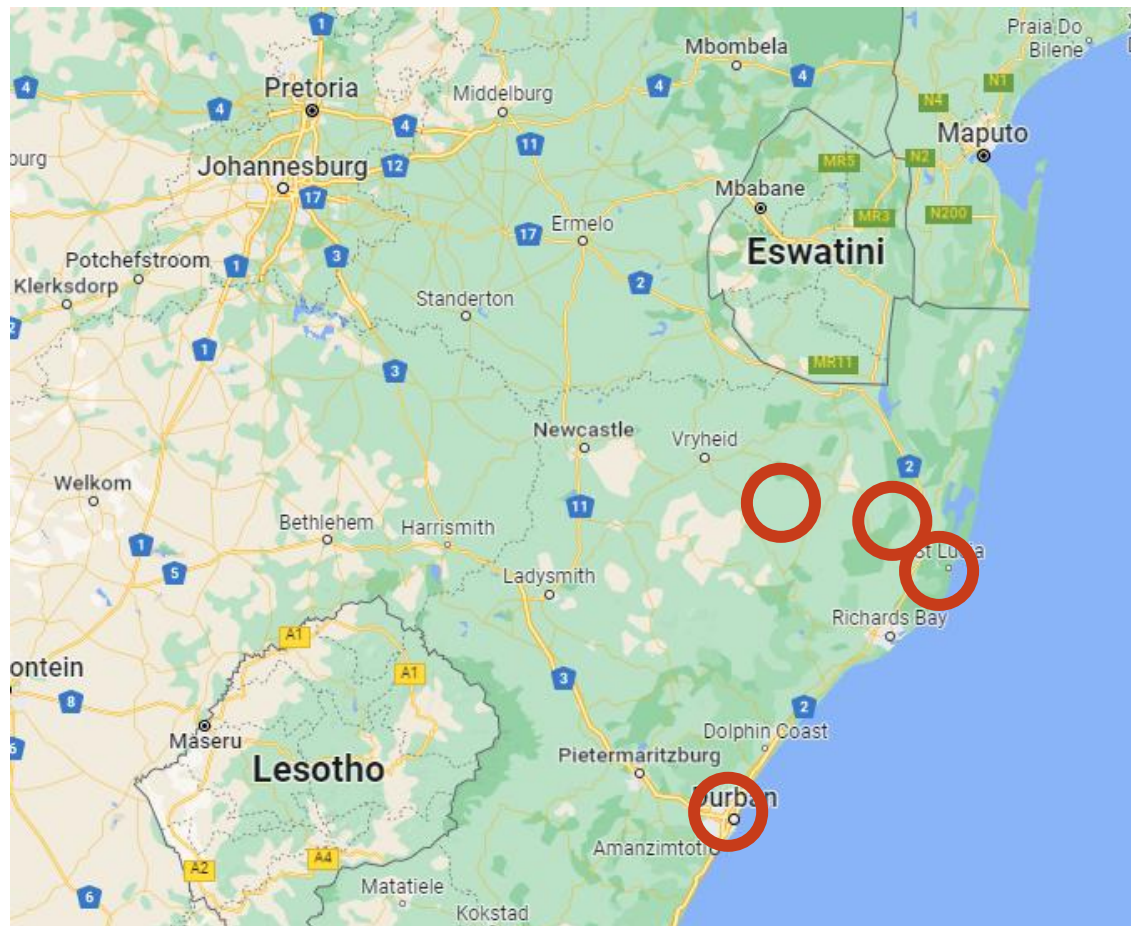


ABOUT THE PROJECT

AFRICA

Project- Location

- Staying in three locations on the Northeastern Coast
- Bonamanzi Game Reserve, Hlomo Hlomo and St Lucia

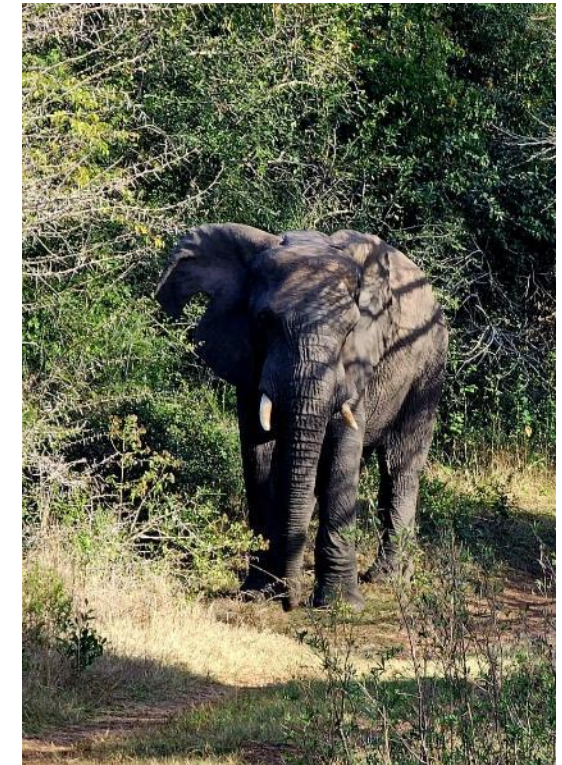


BONAMANZI GAME RESERVE

AFRICA

Bonamanzi Game Reserve

Bonamanzi Game Reserve is a magnificent 10,000 acres of unspoiled wilderness boasting the Big 4 and incredible biodiversity (grasslands, riverine bush, savannah and thornveld) offering unprecedented diversity of wildlife.



BONAMANZI GAME RESERVE

AFRICA

Home to over 40 Species of Mammal



ANY QUESTIONS?

INFO@GAPAFRICAPROJECTS.COM | +44 (0)207 1937819

Q&A PPRESENTATION 6

BONAMANZI GAME RESERVE

AFRICA

Birds /Reptiles



ANY QUESTIONS?

INFO@GAPAFRICAPROJECTS.COM | +44 (0)207 1937819

Q&A PPRESENTATION 7

BONAMANZI GAME RESERVE

AFRICA

Your Conservation Programme

Students will be taught and work alongside the field guides and the conservation team. The following examples depict the day-to-day activities that may be undertaken as part of the project.

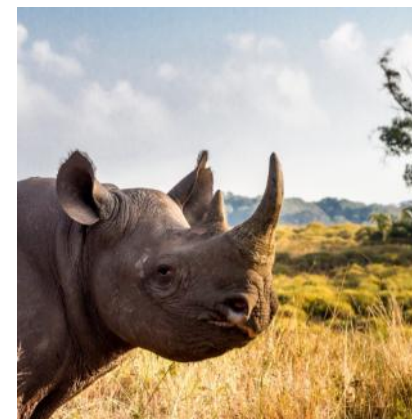
- Use of Telemetry Tracking
- Elephant Monitoring
- Rhino Monitoring – Awareness
- Anti-poaching talk and fence walk
- Camera Trapping
- Night Drive
- Alien Vegetation Control / Reserve Maintenance
- Habitat and Prey Selection of Predators
- Tracks, Signs and Spoor
- Community Development



Hluhluwe-Imfolozi Park

Hluhluwe iMfolozi Park - is the oldest proclaimed nature reserve in Africa. It consists of 96,000 ha of wilderness and has the Big 5 as well as cheetah, hyena, African wild dog among many other mammals, reptiles and birds.

Students will have an inciteful game drive in open game viewers.



BONAMANZI GAME RESERVE

AFRICA

Community Projects & Zulu Culture

Learn about traditional Zulu culture

Community engagement essential for long-term conservation

Positive impact supporting not-for-profit initiatives

Projects: Move Africa, Project Rhino

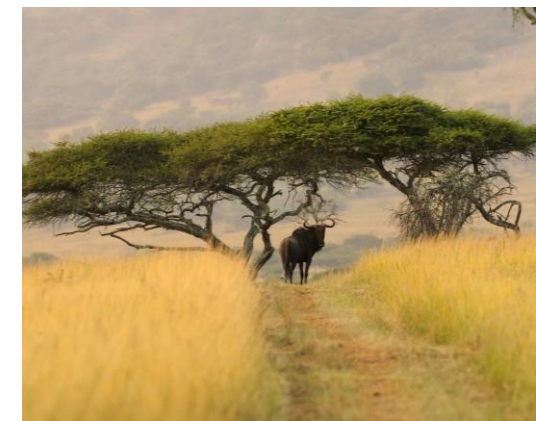
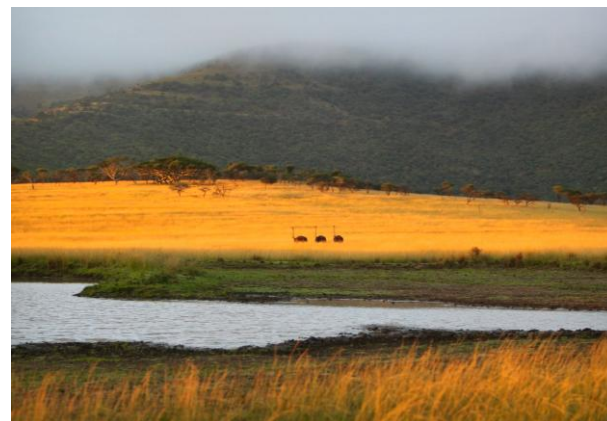
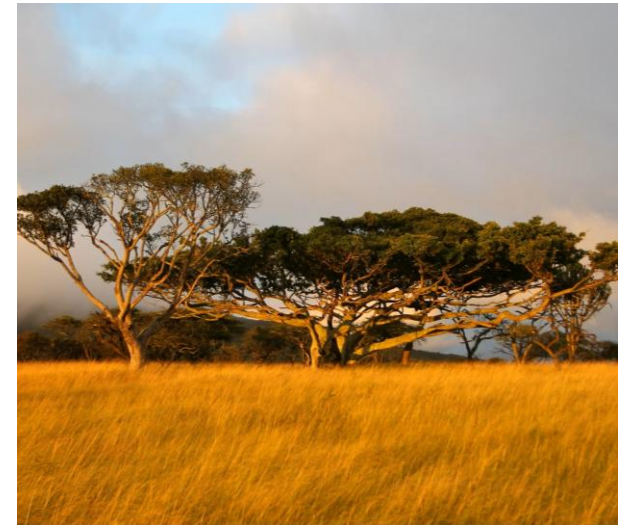


ABOUT THE PROJECT

AFRICA

Hlomo Hlomo (3 Nights)

Hlomo Hlomo is another privately owned Game Reserve, 8000 hectares in size which boasts a rich and diverse range of fauna, flora, and spacious landscapes. The reserve offers various hikes and trails with stunning views, with the opportunity to spot nyalas, as well as vultures and bateleurs soaring overhead.



KwaZulu Wildlife & Community – Hlomo Hlomo

Students will be taught and work alongside the field guides and conservation team. The following examples depict the day-to-day activities that may be undertaken as part of the project at Hlomo Hlomo.

- Sunset bush walk
- Wild dog monitoring
- Full day game drive – big five area
- Black rhino monitoring
- K9 anti-poaching demonstration
- Discussion on realities of rewilding community land
- Talk on illegal wildlife trafficking
- Visit a local rural school with Project Rhino



St Lucia Wetlands

St. Lucia is situated on the northern side of the estuary, the largest in Southern Africa and is totally surrounded by the Greater St. Lucia Wetlands Park and World Heritage Site. The area is famous for its wetlands and is a fantastic opportunity to witness crocodiles and hippos in their natural environment.



ST LUCIA – COASTAL ADVENTURE

AFRICA

Your Conservation Programme – St Lucia

Whilst at St Lucia you will get the opportunity to take part in some amazing activities but also time to relax in the beautiful coastal resort of St Lucia.

- Hippo and Crocodile tour in the Estuary
- Visit to Cape Vidal Nature Reserve and beach
- Visit to the Crocodile Centre
- Whale Watching Tour (seasonal and additional cost)



ST LUCIA – COASTAL ADVENTURE

AFRICA

St Lucia's Hippos



In South Africa, intrepid naturalist Steve Backshall goes in search of the only wild animal that fills him with fear and known for their lethal aggression - the hippo.

- [Episode 1](#): The intrepid naturalist sets his sights on Africa's most deadly animal - the hippo.
- [Episode 2](#): Steve visits St. Lucia, a town where hippos roam the streets freely at night.
 - At 13:58mins see Peter Calverley from Zingela Safari and River Company - another of our projects in KwaZulu-Natal





AFRICA

ACCOMMODATION & LIFESTYLE

Life in the African Bush

Bundu Camp – Bonamanzi

Chalet style accommodation is provided during your time in Bonamanzi Game Reserve. You will be accommodated in twin & triple rooms, 2 rooms share bathroom facilities of shower, toilet and basin.

All guests will eat together in the communal dining room or outside in the covered dining area. On one evening a Potjie competition will be held so everyone gets involved!

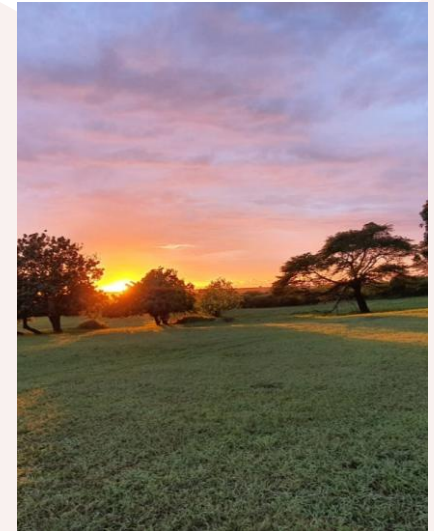
There isn't a washing machine, but clothes can be hand washed.



ACCOMMODATION

AFRICA

Bundu Camp – Bonamanzi



ANY QUESTIONS?

INFO@GAPAFRICAPROJECTS.COM | +44 (0)207 1937819

Q&A PPRESENTATION 18

Hlomo Hlomo

In keeping with a Safari Adventure theme, groups are accommodated on the reserve in comfortable safari tents, with communal hot and cold showers and regular flushing toilets. All meals are provided in a communal dining room.

There isn't a washing machine, but clothes can be hand washed.



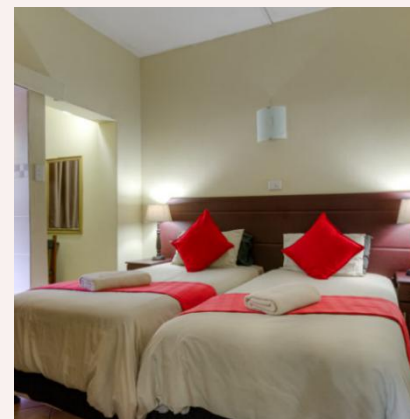
Shonalanga Accommodation – St Lucia

Guest House style accommodation is provided during your time in St Lucia.

You will be accommodated in shared rooms rooms with ensuite facilities.

There are no facilities for washing clothes at the accommodation but there are launderettes nearby which are not expensive.

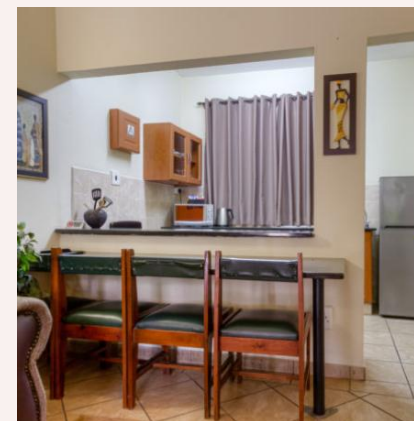
The guest house is located in the heart of St Lucia's Main Street and is the ideal location to explore the surrounding area.



ACCOMMODATION

AFRICA

Shonalanga Accommodation – St Lucia



ANY QUESTIONS?

INFO@GAPAFRICAPROJECTS.COM | +44 (0)207 1937819

Q&A PPRESENTATION 21

Food at the project

Three meals are provided a day prepared by the kitchen staff with the exception of 1 lunch and 1 dinner in St Lucia

Breakfasts will consist of toast and cereals; lunch may include pasta, wraps, burgers, stir fry; dinners include meat, fish and vegetables with rice, potatoes or pasta.

On weekends a braai (BBQ) is often organised.

Dietary Requirements

Provision can be made for Vegetarian & Vegan diets and for those who have a medical condition such as Coeliac disease that requires a Gluten Free Diet and for those with severe allergies to dairy, eggs or nuts.



Sample Menu

Day 1	Day 2	Day 3	Day 4	Day 5
Scrambled eggs, savoury beans or mince or bacon toast (jam, peanut butter)	Yoghurts, muesli, cereal, fruit	Pancakes, banana, fruit	Oatmeal porridge, fruit, toast & jam	French toast (Eggy bread)
Quiche & salad	Macaroni cheese	Soup & homemade bread	Hotdogs	Braai broodjies (tomato, cheese, onion toasties on open fire)
Nachos (vegan or mince)	Beef stew & rice	Braai (barbeque) with salad	Chicken ala King & rice	Chickpea curry mild

We must know of any dietary requirements and allergies at least 6 weeks before departure.



AFRICA

ADDITIONAL ACTIVITIES & EXCURSIONS

Your free time on the project

ADDITIONAL ACTIVITIES & EXCURSIONS

AFRICA

Optional Activity (Mid June to October)

For Projects that include a stay in **St Lucia** you will have the opportunity, if travelling Mid June – October, to join a whale and dolphin watching boat trip.

Whale and Dolphin Watching – Embark upon a 2-hour boat based tour. You may be fortunate to witness a 40 ton Humpback whale breaching a mere 50 metres away from the boat. You may also see a variety of pelagic bird life, dolphin frolicking alongside the bow of the boat, sea turtles in season, shark, marlin, whale shark and other marine mammals and cetacean.

The trip is weather dependent.

Price is around R1900pp – R2000pp.

You **must** ensure your travel insurance covers you for any optional activities you undertake.

Any activities booked and paid for locally are not covered under GAPAfrica Project's public liability insurance.

The activity is booked and paid for in St Lucia with cash. There is access to an ATM.





AFRICA

PRE DEPARTURE INFORMATION

Travel details

FLIGHT INFORMATION

AFRICA

Departure from the United Kingdom | Arrival to South Africa

Flights

Flight No	Flight Date	Dept.	Dept. Time	Arr.	Arr. Time
VS449	21/06/2026	London Heathrow (LHR)	22:25	Johannesburg (JNB)	10:25 + 1 Day
FA669	22/06/2026	Johannesburg (JNB)	13:30	King Shaka Int: Durban (DUR)	14:40

*Always check the flight timings on your final documents

Baggage Allowance – 1 piece checked baggage @ 20kgs, 1 piece hand baggage max dimensions 56x33x23cm

Johannesburg OR Tambo Airport

Clear immigration & collect baggage to clear customs.
Meet GAP representative by the statue in the arrivals hall.

Durban Airport

Meet and Greet at Durban Arrivals Hall
Transfer to Bonamanzi Game Reserve



Cabin Baggage



Rucksack (not trolley suitcase)
No larger than 56x36x23cm

Hold Baggage



One piece maximum 20kg

To allow for ease of transfer to the project a soft holdall/ soft suitcase is preferred.

Departure from South Africa | Arrival to the United Kingdom

Flights

Flight No	Flight Date	Dept.	Dept. Time	Arr.	Arr. Time
FA417	04/07/2026	King Shaka Int: Durban (DUR)	14:40	Johannesburg (JNB)	15:50
VS450	04/07/2026	Johannesburg (JNB)	20:25	London Heathrow (LHR)	06:30 + 1 Day

*Always check the flight timings on your final documents

Baggage Allowance – 1 piece checked baggage @ 20kgs, 1 piece hand baggage max dimensions 56x33x23cm

Return Journey

Transfer from Bonamanzi Game Reserve.
Check in at the FlySafair check-in desk.



TRAVEL DOCUMENTS

AFRICA

Travel Documents

- Final Balance:
27/04/2026
- Final Documents Issued
08/06/2026
- Emailed to your personal and/or college email address
- Print and take copies
- Boarding passes issued at the airport
- Passports!

Your e-ticket

Travelport ViewTrip™
This Electronic Ticket Receipt has been brought to you by Travelport ViewTrip and your travel provider. For the latest information on your travel plans, view your itinerary at ViewTrip.com.

Reservation Number: RES3RGS [View Electronic Ticket Receipt](#)

Traveler		
Passenger Name	Billing Address	Delivery Address
DEBLEY, GEORGE MR	TRAVEL COUNSELLORS PHENIX TRAVEL ROSE CHURCHGATE BOLTON PIBLL1 1YN	No Address On Record

Agency Information
TRAVEL COUNSELLORS LTD
Travel House
Bolton L1 1YN
UNITED KINGDOM
Agency Phone: 01204 636 084 TRAVEL COUNSELLORS PLC PHENIX FLT5
Agency IATA Number: 91277992

✈ Ticket Receipt - 93294169922 - VS 801 - 28 Jun 2015 - LHR Today's Date: 29 May 2015

✈ Ticket Number	Galileo Reservation Number	Ticket Issue Date
93294169922	RES3RGS	27 May 2015

Flight Information

28 Jun 2015	Virgin Atlantic Airways Ltd (VS) 801	Economy (C)	Virgin Atlantic Airways Ltd Confirmation Number: SH8Q24
Depart: Heathrow (LHR) - Terminal 3	9:05 PM	Fare Basis: 8T	
London		Not Valid Before: 28 Jun 2015	
Arrive: Johannesburg (JNB) - Terminal A	9:05 AM	Not Valid After: 28 Jun 2015	

Applies to: LHR - JNB
Baggage Allowance: 1 Piece Plus

This is an important document. Make sure that you take it with you when you travel.

ATOL Certificate

This confirms that your money is protected by the ATOL scheme and that you can get home if your travel company collapses.

This certificate sets out how the ATOL scheme will protect the people named on it for the parts of their trip listed below.

Who is protected?	Number of passengers:
Mr Daniel Alexander	1

What is protected?
Package valid to South Africa to: 02 Jun 2015 - 10:00 AM
28 Jun 2015 - 10:00 AM - London Heathrow (LHR) - Johannesburg (JNB): 21:00:00 - 1 Day
29 Jun 2015 - 08:00 AM - Johannesburg (JNB) - London Heathrow (LHR): 11:15:00
11 Jun 2015 - 08:00 AM - London Heathrow (LHR) - Johannesburg (JNB): 13:30:00 - 1 Day
11 Jun 2015 - 08:00 AM - Johannesburg (JNB) - London Heathrow (LHR): 20:00:00 - 1 Day

You can find more detailed information on your booking, including price, on the confirmation you will receive from Gap Africa Projects Limited.

Who is protecting your trip?
Gap Africa Projects Limited ATOL Number: 10890 Booking Ref: 4007

Your protection
You are protected from when you were given this certificate to the end of your trip. If Gap Africa Projects Limited stops trading, the passengers named above will either:

1. complete their trip and return to the UK; or
2. receive a refund.

Your protection depends on the terms of the ATOL scheme (available at www.atol.org.uk).

If Gap Africa Projects Limited stops trading, you must follow the instructions at www.atol.org.uk (where there will be details of arrangements to bring people back to the UK, and information on how people can claim their money back) or you can call (+44) 20 7463 0350.

Unique reference number:	Date of issue:	ATOL Certificate Issuer:	ATOL number:	Package title:
4007	16/10/2014	Gap Africa Projects Limited	10890	

[Click here to lock all editable fields](#)

Life changing conservation and community projects that make a difference.

16/07/2017	Check in for your flight at the South African Airways Check in Desk, London Heathrow, terminal 2	18:00
	Depart London Heathrow	21:00
17/07/2017	Arrive Johannesburg International Airport, Terminal A	09:00

Upon arrival please clear immigration and collect your baggage to pass through Customs.

A member of the Gap Africa Projects ground team will meet you at International Arrivals Hall and take you through to Domestic Departures, terminal B. Please look out for our Meet and Great Board.

Drop off Baggage at SAA bag drop - Domestic Terminal B

Depart Johannesburg	10:45
Depart Port Elizabeth Airport	12:20

Upon arrival you will be met by a representative from Blunden Tours and transferred to Shamwari Game Reserve

Shamwari Group Conservation Experience x 14 DAYS

31/07/2017	Today is the final day of your placement and you will be transferred to Port Elizabeth Airport	11:00
------------	--	-------

Check in for your flight at the SAA Check in Desk

Depart Port Elizabeth	14:30
Arrive Johannesburg Terminal B	16:10

Upon arrival please make your way to Terminal A International Departures

Depart Johannesburg	18:55
Arrive London Heathrow, terminal 2	06:25

Important Travel Advice

Under 18 Visa Requirements.
If you are aged under 18, whether travelling alone or within a group you must adhere to the regulations set for minors entering the republic of South Africa. <http://www.dha.gov.za/index.php/cvsc-services/travelling-with-children>

Names and spellings.
It is crucial that they match what is printed on your passport. If there is a mistake this will need to be changed, otherwise you may be refused travel.

Group Web Page & Travel Documents

FAQs and House Rules

📄 Student Frequently Asked Questions - Click to Download

📄 Student Guidelines and House Rules - Click to Download



Student - Frequently Asked Questions

Contents	
Pre-Departure.....	2
1. What documents should I receive from Gap Africa?.....	2
2. What travel documents are required?.....	2
3. What should I bring?.....	2
4. What are the house rules?.....	2
5. What are the behavioral expectations?.....	2
6. What are the language and conduct rules?.....	3
7. What are the alcohol and substance use policies?.....	3
8. What are the community interaction rules?.....	3
9. What are the health and dietary needs?.....	3
10. What are the personal supplies rules?.....	3
11. What are the insurance rules?.....	3
12. What are the frequently asked questions?.....	3
13. What are the travel documents?.....	3
14. What are the behavioral expectations?.....	3
15. What are the language and conduct rules?.....	3
16. What are the alcohol and substance use policies?.....	3
17. What are the community interaction rules?.....	3
18. What are the health and dietary needs?.....	3
19. What are the personal supplies rules?.....	3
20. What are the insurance rules?.....	3
21. What are the frequently asked questions?.....	3
22. What are the travel documents?.....	3
23. What are the behavioral expectations?.....	3
24. What are the language and conduct rules?.....	3
25. What are the alcohol and substance use policies?.....	3
26. What are the community interaction rules?.....	3
27. What are the health and dietary needs?.....	3
28. What are the personal supplies rules?.....	3
29. What are the insurance rules?.....	3
30. What are the frequently asked questions?.....	3
31. What are the travel documents?.....	3
32. What are the behavioral expectations?.....	3
33. What are the language and conduct rules?.....	3
34. What are the alcohol and substance use policies?.....	3
35. What are the community interaction rules?.....	3
36. What are the health and dietary needs?.....	3
37. What are the personal supplies rules?.....	3
38. What are the insurance rules?.....	3
39. What are the frequently asked questions?.....	3
40. What are the travel documents?.....	3
41. What are the behavioral expectations?.....	3
42. What are the language and conduct rules?.....	3
43. What are the alcohol and substance use policies?.....	3
44. What are the community interaction rules?.....	3
45. What are the health and dietary needs?.....	3
46. What are the personal supplies rules?.....	3
47. What are the insurance rules?.....	3
48. What are the frequently asked questions?.....	3
49. What are the travel documents?.....	3
50. What are the behavioral expectations?.....	3
51. What are the language and conduct rules?.....	3
52. What are the alcohol and substance use policies?.....	3
53. What are the community interaction rules?.....	3
54. What are the health and dietary needs?.....	3
55. What are the personal supplies rules?.....	3
56. What are the insurance rules?.....	3
57. What are the frequently asked questions?.....	3
58. What are the travel documents?.....	3
59. What are the behavioral expectations?.....	3
60. What are the language and conduct rules?.....	3
61. What are the alcohol and substance use policies?.....	3
62. What are the community interaction rules?.....	3
63. What are the health and dietary needs?.....	3
64. What are the personal supplies rules?.....	3
65. What are the insurance rules?.....	3
66. What are the frequently asked questions?.....	3
67. What are the travel documents?.....	3
68. What are the behavioral expectations?.....	3
69. What are the language and conduct rules?.....	3
70. What are the alcohol and substance use policies?.....	3
71. What are the community interaction rules?.....	3
72. What are the health and dietary needs?.....	3
73. What are the personal supplies rules?.....	3
74. What are the insurance rules?.....	3
75. What are the frequently asked questions?.....	3
76. What are the travel documents?.....	3
77. What are the behavioral expectations?.....	3
78. What are the language and conduct rules?.....	3
79. What are the alcohol and substance use policies?.....	3
80. What are the community interaction rules?.....	3
81. What are the health and dietary needs?.....	3
82. What are the personal supplies rules?.....	3
83. What are the insurance rules?.....	3
84. What are the frequently asked questions?.....	3
85. What are the travel documents?.....	3
86. What are the behavioral expectations?.....	3
87. What are the language and conduct rules?.....	3
88. What are the alcohol and substance use policies?.....	3
89. What are the community interaction rules?.....	3
90. What are the health and dietary needs?.....	3
91. What are the personal supplies rules?.....	3
92. What are the insurance rules?.....	3
93. What are the frequently asked questions?.....	3
94. What are the travel documents?.....	3
95. What are the behavioral expectations?.....	3
96. What are the language and conduct rules?.....	3
97. What are the alcohol and substance use policies?.....	3
98. What are the community interaction rules?.....	3
99. What are the health and dietary needs?.....	3
100. What are the personal supplies rules?.....	3
101. What are the insurance rules?.....	3
102. What are the frequently asked questions?.....	3
103. What are the travel documents?.....	3
104. What are the behavioral expectations?.....	3
105. What are the language and conduct rules?.....	3
106. What are the alcohol and substance use policies?.....	3
107. What are the community interaction rules?.....	3
108. What are the health and dietary needs?.....	3
109. What are the personal supplies rules?.....	3
110. What are the insurance rules?.....	3
111. What are the frequently asked questions?.....	3
112. What are the travel documents?.....	3
113. What are the behavioral expectations?.....	3
114. What are the language and conduct rules?.....	3
115. What are the alcohol and substance use policies?.....	3
116. What are the community interaction rules?.....	3
117. What are the health and dietary needs?.....	3
118. What are the personal supplies rules?.....	3
119. What are the insurance rules?.....	3
120. What are the frequently asked questions?.....	3
121. What are the travel documents?.....	3
122. What are the behavioral expectations?.....	3
123. What are the language and conduct rules?.....	3
124. What are the alcohol and substance use policies?.....	3
125. What are the community interaction rules?.....	3
126. What are the health and dietary needs?.....	3
127. What are the personal supplies rules?.....	3
128. What are the insurance rules?.....	3
129. What are the frequently asked questions?.....	3
130. What are the travel documents?.....	3
131. What are the behavioral expectations?.....	3
132. What are the language and conduct rules?.....	3
133. What are the alcohol and substance use policies?.....	3
134. What are the community interaction rules?.....	3
135. What are the health and dietary needs?.....	3
136. What are the personal supplies rules?.....	3
137. What are the insurance rules?.....	3
138. What are the frequently asked questions?.....	3
139. What are the travel documents?.....	3
140. What are the behavioral expectations?.....	3
141. What are the language and conduct rules?.....	3
142. What are the alcohol and substance use policies?.....	3
143. What are the community interaction rules?.....	3
144. What are the health and dietary needs?.....	3
145. What are the personal supplies rules?.....	3
146. What are the insurance rules?.....	3
147. What are the frequently asked questions?.....	3
148. What are the travel documents?.....	3
149. What are the behavioral expectations?.....	3
150. What are the language and conduct rules?.....	3
151. What are the alcohol and substance use policies?.....	3
152. What are the community interaction rules?.....	3
153. What are the health and dietary needs?.....	3
154. What are the personal supplies rules?.....	3
155. What are the insurance rules?.....	3
156. What are the frequently asked questions?.....	3
157. What are the travel documents?.....	3
158. What are the behavioral expectations?.....	3
159. What are the language and conduct rules?.....	3
160. What are the alcohol and substance use policies?.....	3
161. What are the community interaction rules?.....	3
162. What are the health and dietary needs?.....	3
163. What are the personal supplies rules?.....	3
164. What are the insurance rules?.....	3
165. What are the frequently asked questions?.....	3
166. What are the travel documents?.....	3
167. What are the behavioral expectations?.....	3
168. What are the language and conduct rules?.....	3
169. What are the alcohol and substance use policies?.....	3
170. What are the community interaction rules?.....	3
171. What are the health and dietary needs?.....	3
172. What are the personal supplies rules?.....	3
173. What are the insurance rules?.....	3
174. What are the frequently asked questions?.....	3
175. What are the travel documents?.....	3
176. What are the behavioral expectations?.....	3
177. What are the language and conduct rules?.....	3
178. What are the alcohol and substance use policies?.....	3
179. What are the community interaction rules?.....	3
180. What are the health and dietary needs?.....	3
181. What are the personal supplies rules?.....	3
182. What are the insurance rules?.....	3
183. What are the frequently asked questions?.....	3
184. What are the travel documents?.....	3
185. What are the behavioral expectations?.....	3
186. What are the language and conduct rules?.....	3
187. What are the alcohol and substance use policies?.....	3
188. What are the community interaction rules?.....	3
189. What are the health and dietary needs?.....	3
190. What are the personal supplies rules?.....	3
191. What are the insurance rules?.....	3
192. What are the frequently asked questions?.....	3
193. What are the travel documents?.....	3
194. What are the behavioral expectations?.....	3
195. What are the language and conduct rules?.....	3
196. What are the alcohol and substance use policies?.....	3
197. What are the community interaction rules?.....	3
198. What are the health and dietary needs?.....	3
199. What are the personal supplies rules?.....	3
200. What are the insurance rules?.....	3

Gap Africa Projects - General Guidelines and House Rules:

As a participant in Gap Africa Projects, I understand and agree to adhere to the following guidelines:

1. Timeliness and Curfew: I commit to respecting designated timings, including early mornings and curfew times.
2. Behavioural Expectations: I agree to uphold the behavioural standards set by my institution, maintaining respect for others and the local culture.
3. Language and Conduct: I recognise that the use of foul language is inappropriate and will respectfully challenge any instances of it among fellow participants.
4. Smoking and Vaping: I agree not to smoke or vape inside any buildings or vehicles, utilising only designated smoking areas for such activities.
5. Alcohol Policy: I agree to comply with my institution's alcohol policy and ensure that if I choose to drink, I do so responsibly and without becoming intoxicated during any activities.
6. Substance Use: I understand and agree that the use of narcotic substances is strictly prohibited.
7. Community Interaction: I will refrain from giving money or food directly to individuals in the community, as it may perpetuate a culture of dependency.
8. Health and Dietary Needs: I will inform Gap Africa Projects of any medical conditions, mental health concerns, or dietary restrictions at least six weeks before travel.
9. Personal Supplies: I commit to bringing any preferred snacks or foods if I know I am a picky/fussy eater.
10. Insurance: I agree to obtain appropriate travel and medical insurance that covers all activities during the trip.

GLOBAL reach. ADVENTURE for all. PROJECTS to inspire.

<https://gapafricaprojects.com/26-4780/>



AFRICA

USEFUL INFORMATION

Recommended Kit List and
other Useful Information

Suggested kit list

To allow for ease of transfer to the project a soft holdall/ soft suitcase is preferred.

- Short and long sleeve t-shirts
- Long work trousers and shorts (or work/zip-off trousers)
- Hiking boots/comfortable walking shoes to work in every day
- Waterproof jacket
- Sweatshirt/Fleece (Winter months pack plenty)
- Padded jacket/windbreaker (Winter months) although it can get very cold on an open vehicle even in summer
- Socks
- Underwear
- Change of casual clothes for evenings
- Sandals / comfy shoes to wear after work hours
- Warm hat (Winter only) / Hat for sun protection (all year)
- Gloves for warmth (Winter only)
- Daypack rucksack
- Swimwear
- Beach Towel
- Sunscreen and Sunglasses
- Personal medical items
- First aid kit
- Toiletries
- Tick / Insect repellent
- Water bottle

Other useful items:

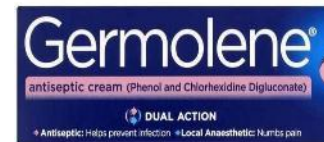
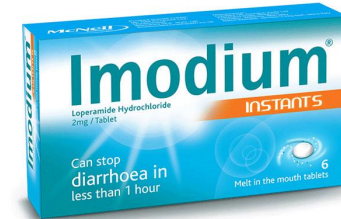
- Binoculars
- Camera
- Power bank
- Good torch

* All work clothes should be neutral or earth tones for working in the bush. No skimpy or bright-coloured clothing to be worn

First Aid Kit

It is strongly advisable that you pack your own mini first-aid kit of everyday essentials. This should include:

- Paracetamol / Ibuprofen (or equivalent)
- Antihistamines (eases a reaction to any bites or stings)
- Antiseptic cream (e.g. Savlon/Germolene/Sudocrem)
- Bite and sting cream
- Plasters
- Imodium (anti-diarrheal medication)
- Dioralyte (fast-acting oral rehydration treatment designed to replace fluids and body salts (electrolytes) lost during diarrhoea or vomiting)
- Tick remover



Practical Advice

Power / Electricity

It is important that you take the right travel adapter so you can charge your phone and other devices whilst away.



Drinking Water:

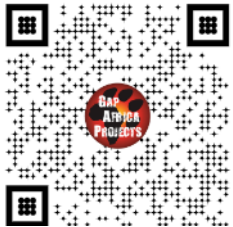
Drinking water is available at the project; always make sure you keep hydrated and have packed an insulated water bottle. We recommend taking concentrated squash as the water will taste different from home.



Insurance

Personal travel insurance is compulsory. Travel insurance does not need to be expensive and there are many good deals available for backpackers etc. Always be sure to check the insurance details to make sure you are covered for Covid 19, theft, loss, illness and injury. Check to see if your medical benefits are paid out as they incur or on your return home.

You should select 'Adventure Pack' as this will cover you for the type of activities you will undertake during your trip.



<https://www.true Traveller.com/?tag=4480>

Passport Requirements

It can take up to 6 weeks to obtain a passport – remember to start this process in plenty of time.

Your passport needs to be valid for at least 30 days beyond your intended stay and have at least two blank pages.

Stay safe overseas – KBYG

The better prepared you are when you travel abroad the safer you will be. The Foreign, Commonwealth and Development Office offers 'Know Before You Go' travel advice, including simple precautions you can take before and during your trip.

To find out more, check out their website:

<https://www.gov.uk/browse/abroad/travel-abroad>

Visa Requirements

A visa is not required for British Passport holders, all other nationalities should check the requirements via the website below, if required a visa can be obtained from the South African High Commission.

<http://www.dha.gov.za/index.php/immigration-services/exempt-countries>

USEFUL INFORMATION

AFRICA

Climate

Bonamanzi / Hlomo Hlomo / St Lucia

21	22	23	24	25	26	27
						
22° 15°	23° 15°	23° 15°	22° 15°	20° 14°	21° 13°	22° 13°
28	29	30	1	2	3	4
						
21° 14°	21° 14°	22° 13°	20° 14°	20° 14°	21° 15°	22° 14°

What To Expect 'Weatherwise' From May To August

Be prepared for the chilly nights and crisp mornings during autumn and winter in South Africa.

Staying warm will be key to you enjoying your experience.

As the sun dips, the temperature will drop and can go down to near or below freezing, resulting in frost.

It is recommended that you layer smartly: avoid cotton next to the skin as it traps moisture and makes you colder. Keep spare socks and gloves in a sealed plastic bag to ensure dryness.

If you feel the cold, pack appropriately!



Currency & Credit Cards

The currency for South Africa is the South African Rand (ZAR). Foreign exchange may be arranged at the airport or in major centres. It is not recommended that travellers carry large sums of cash, keep a reasonable amount on hand and primarily use credit cards.

All major credit cards are widely accepted in main towns, although local communities only take cash.

Wise Travel Card offers up to £500.00 with no transfer fee for Gap Africa Project travellers:



<https://wise.prf.hn/l/XZJx9gq>

Tipping

Whilst there is no obligation, it is a nice gesture to show your appreciation for the rangers and housekeeping staff by leaving a small tip/donation for the staff at the reserve when you leave; any amount is always appreciated.

On day trips/excursions it is also a nice gesture to show your appreciation for the guide.

A 10% tip is normal for any café/restaurant when eating out.

Phones & Internet

Mobile phone coverage is generally good at Bonamanzi and Hlomo Hlomo, although there may be some areas on the reserve where there isn't any coverage. Coverage is very good in St Lucia.

Some Wi-Fi is provided free of charge at the accommodation. Internet speeds are not up to international urban standards but are effective for communication.

We have partnered with Holafly eSim provider 5% discount use code GAPAFRICAPROJECTS.


Benefits of an eSIM





- Unlimited Data Plans
- Uses both Vodacom and MTN the two major networks in South Africa
- Keep your WhatsApp number
- Immediate Delivery





<https://shorturl.at/sxE29>



Unlimited data
Enjoy unlimited data while traveling to numerous destinations worry-free. [Learn more](#)


Keep using your favorite apps
Get that safe ride home, find that great restaurant, and pin the local attractions, all while staying connected with your loved ones.


Keep your WhatsApp number
You can call and message all your contacts on WhatsApp, like you're in the same country. Don't lose touch with family and friends.


24/7 Customer Support
In need of assistance? Our 24/7 chat support is just a message away to keep you connected and help you with everything you need.


Fast and Reliable Internet Connection
Connect to the best networks at your destination and get internet that's both reliable and fast


Enjoy dual SIMs
Enjoy the flexibility of our digital eSIM while keeping the option to use your original SIM as usual whenever you need it.

USEFUL INFORMATION

AFRICA

Trip Clothing

Online shop available for trip clothing:

GAP Trip Hoodie

GAP Africa Polo Shirts

GAP Africa Caps

GAP Africa Beenie

GAP Africa 500ml Bottle



SIZES	XS	S	M	L	XL	XXL	3XL	4XL	5XL
A - Half Chest	49	51	56	61	65	69	73	78	83
B - Body Length	64	67	70	73	76	79	82	86	90
C - Sleeve Length	57.5	59	60.5	62	63.5	65	66.5	68.5	70.5

All garment measurements are shown in centimetres (cm). Garment sizes are approximate and for guidance only.

SIZES	XS	S	M	L	XL	XXL	3XL	4XL	5XL
To Fit Chest Size	34 inch	36 inch	40 inch	44 inch	48 inch	52 inch	56 inch	60 inch	64 inch



<https://hyvfsu-vu.myshopify.com/>

ANY QUESTIONS?

INFO@GAPAFRICAPROJECTS.COM | +44 (0)207 1937819

Q&A PPRESENTATION 41

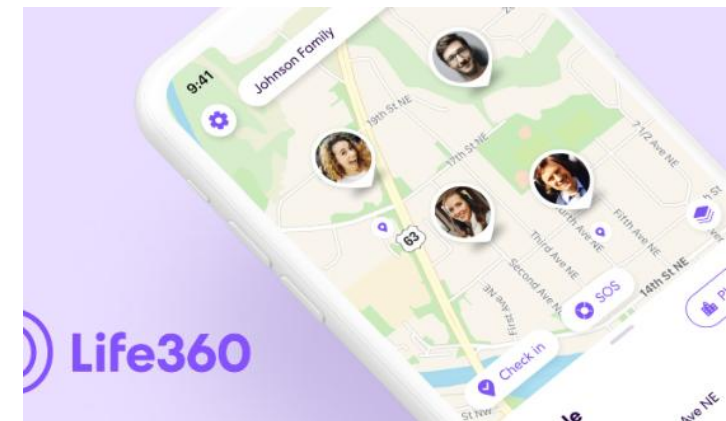
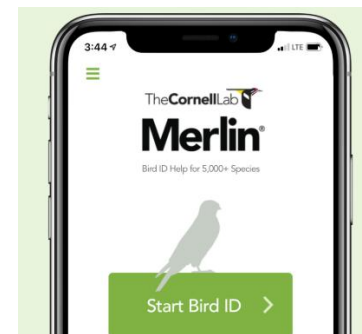
Useful Apps for Next of Kin

We recommend that Next of Kin also download and set up the following app, we have found this to be useful in knowing where are students whilst on the trip!

Flightradar24 – very useful for tracking flights, showing departure times, any delays and flight location in travel.

Life360 – is great for following them on their journey.

Merlin Bird App



COMMUNITY DONATION BAGS

AFRICA

Community GAP Donation Bags

- Reading books and activity books
- Stationery – pencil cases, pens, crayons, colouring pencils, chalk, plain and coloured paper
- Skipping ropes
- Jigsaws, puzzles, playing cards and games
- Sports kit (football kit, boots, shirts, deflated balls, bibs, socks etc)
- Mini fishing nets
- Toothpaste, toothbrushes and facecloths
- Towels
- Recyclable pads for Move Africa donation
- Period pants
- New reading glasses – for the 'Right to sight' campaign
- Sleeping bags



Follow instructions from your college about bringing in one good quality item from the list.

Your tutor can request a donation bag from GAP Africa Projects if space is limited.



GLOBAL reach. **ADVENTURE** for all. **PROJECTS** to inspire.

Explore our network of Global Adventure Projects:



GLOBALADVENTUREPROJECTS.COM

