



SCOTLAND'S RURAL COLLEGE PROJECT INFORMATION PACK



KwaZulu Wildlife & Community

GLOBAL reach. **ADVENTURE** for all. **PROJECTS** to inspire.



TRIP OVERVIEW

AFRICA

Scotland's Rural College – Booking Reference 4767

Travel Dates:

20th July 2026 – 5th August 2026

Flights:

Flight No	Flight Date	Dept.	Dept. Time	Arr.	Arr. Time
EK024	20/07/2026	Edinburgh (EDI)	21:50	Dubai (DXB)	08:15 + 1 Day
EK775	21/07/2026	Dubai (DXB)	10:15	King Shaka Int: Durban (DUR)	16:35
EK776	05/08/2026	King Shaka Int: Durban (DUR)	18:40	Dubai (DXB)	05:00 + 1 Day
EK027	06/08/2026	Dubai (DXB)	07:50	Glasgow (GLA)	12:45

*Always check the flight timings on your final documents

Baggage Allowance – 1 piece of checked baggage @ 20kgs & 1 piece of hand baggage @ 7kgs 55x38x22cms

Project:

KwaZulu Wildlife & Community Project

Trip Cost:

£2825.00 per person

£300.00 deposit

£1262.50 Instalment due 31/03/2026

£1262.50 Balance due 26/05/2026



ABOUT THE PROJECT

Overview and location
of the project

KwaZulu Wildlife & Community

Our academic team and qualified rangers at the KwaZulu Wildlife & Community Project offer a bespoke course to each institution dependent on their own personal objectives and learning needs.

We set out the basis of the trip, comprising of a 15-night academic module split between two conservation reserves, the surrounding community, and including 3 nights at St Lucia Coastal Unit



A full day will be planned but will vary from day to day depending on the day's task and research goals.

The project split and duration are as follows:

15 Night Itinerary

6 Nights

Bonamanzi Game Reserve and Hluhluwe surrounds

6 Nights

Hlomo Hlomo Game Reserve

3 Nights

St Lucia Coastal Project

It's important to remember that wildlife does not work to an agenda, therefore activities may change at short notice!

ABOUT THE PROJECT

AFRICA

KwaZulu-Natal Wildlife and Community Project

The KwaZulu-Natal Wildlife and Community project is located conveniently close to Durban (3 hours) on the KwaZulu-Natal North Coast in South Africa it is close to the beautiful St Lucia Wetlands, a UNESCO World Heritage Site.

The main project location is Bonamanzi and the surrounding community; Bonamanzi is a Zulu word for "look water!" The nearest town is Hluhluwe which has South Africa's oldest Game Reserve.

The second module of the project is at Hlomo Hlomo Private Game reserve, three hours from Bonamanzi.

The final module of the project is located in St Lucia this is a small but quaint village that is becoming a top tourist destination, St Lucia is famous for its huge population of wild hippos.

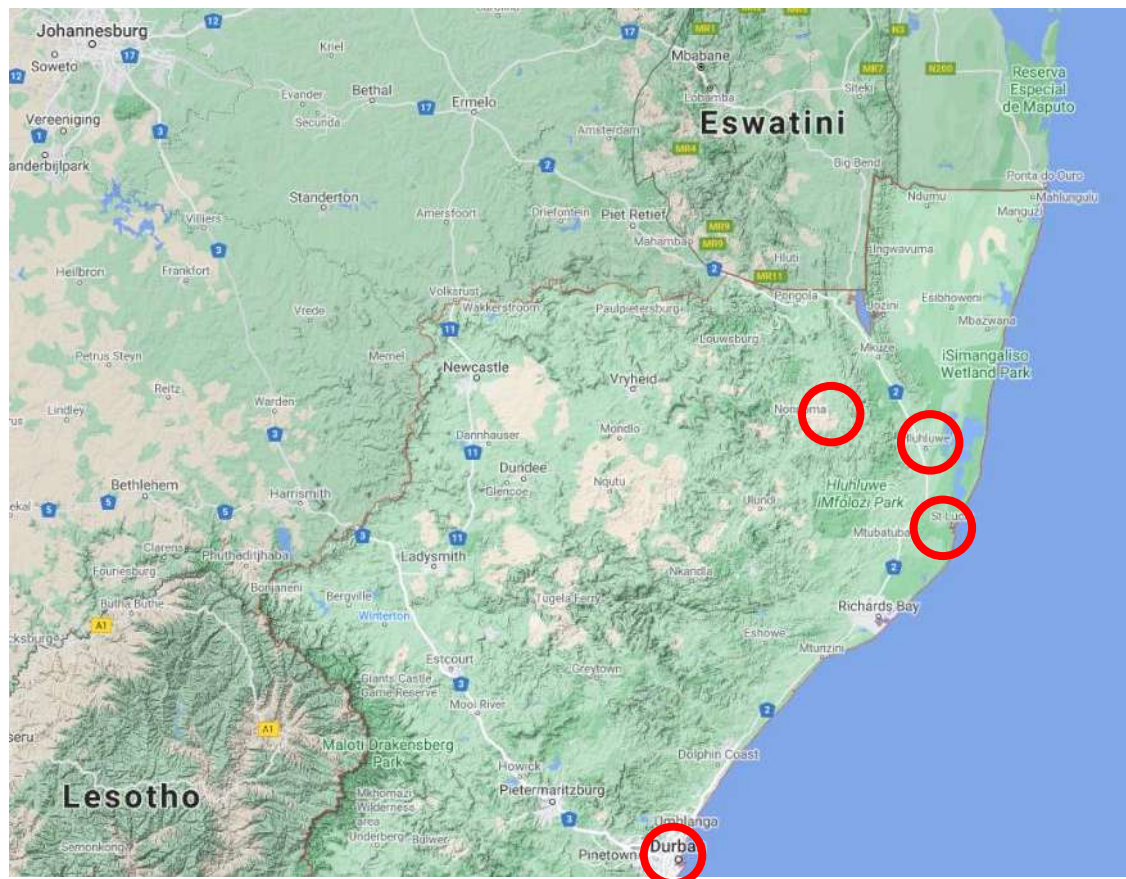


ABOUT THE PROJECT

AFRICA

KwaZulu Wildlife & Community Location

South Africa a world leader in conservation



ABOUT THE PROJECT

AFRICA

Bonamanzi

Bonamanzi is a privately owned Game Reserve, 4000 hectares in size with the Hluhluwe River on its Eastern border. Proclaimed a Natural Heritage Site in 1995 in recognition of the biodiversity of the Reserve it offers sand forests, savanna and wetland areas. This diversity is why Bonamanzi is recognized as one of the best birding destinations in Southern Africa.



ABOUT THE PROJECT

AFRICA

Hlomo Hlomo

Hlomo Hlomo is another privately owned Game Reserve, 8000 hectares in size which boasts a rich and diverse range of fauna, flora, and spacious landscapes. The reserve offers various hikes and trails with stunning views, with the opportunity to spot nyalas, as well as vultures and bateleurs soaring overhead.



St Lucia Wetlands

St. Lucia is situated on the northern side of the estuary, the largest in Southern Africa and is totally surrounded by the Greater St. Lucia Wetlands Park and World Heritage Site. The area is famous for its wetlands and is a fantastic opportunity to witness crocodiles and hippos in their natural environment. Snorkelling at Cape Vidal is tide and current dependent.

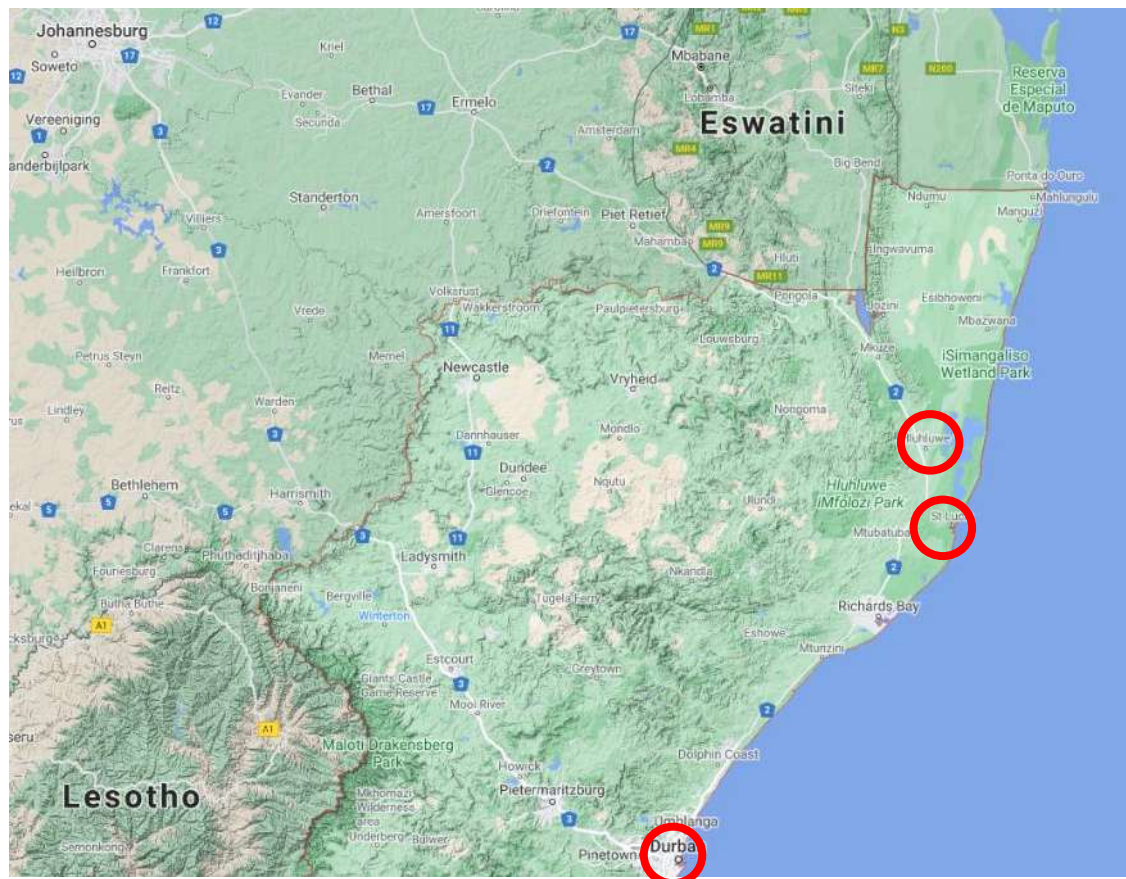


ABOUT THE PROJECT

AFRICA

KwaZulu Wildlife & Community Location

South Africa a world leader in conservation





BONAMANZI/ HLUHLUWE

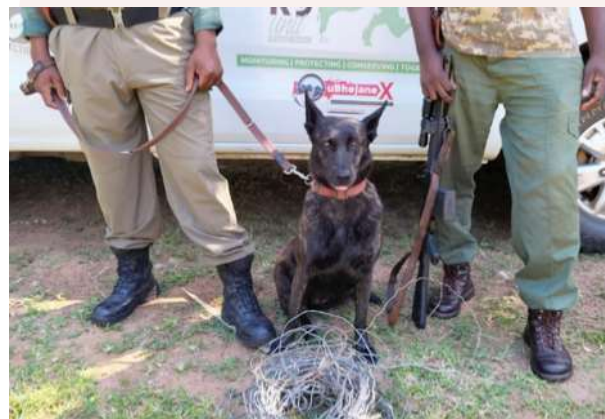
A Big Four Game Reserve

KwaZulu Wildlife & Community – Bonamanzi

Leopard/Hyena Research presentation and tracking, night drive, camera traps

Bird ringing – Erect mist nets, free birds from nets, collect data, release birds

Anti-poaching boat patrol in search of hippo snares & gill nets on the Hluhluwe River



KwaZulu Wildlife & Community – Hluhluwe

Snake Pharm anti-venom research /reptile centre – volunteering and optional snake handling course

Dumazulu – Zulu Cultural experience



Hluhluwe–iMfolozi Park

Hluhluwe iMfolozi Park – is the oldest proclaimed nature reserve in Africa. It consists of 96000 ha of wilderness and has the Big 5 as well as cheetah, hyena, African wild dog among many other mammals, reptiles and birds.

Students will have an inciteful game drive in open game viewers.



KwaZulu Wildlife & Community - Hluhluwe

Students will be taught and have the opportunity to work alongside several inspiring professionals -

Project Rhino. - Project Rhino aims to educate school children on the conservation of Rhinos and the Rhino poaching crisis. It aims to increase relationships with game reserves and the neighboring communities. Project Rhino has reached over 700,000 school children in South Africa, educating these children about the importance of the natural world and the wildlife around them. Children attend presentations and are encouraged to produce artwork in support of the local wildlife. The education links directly to the Zulu culture

Move Africa - Champion and encourage girls on how to use menstrual cups as a sustainable solution to period poverty. In Africa 3 out of 10 girls miss out on a week of school every month, due to not being able to afford menstrual products. This has a huge impact on the girl's outlook. Move Africa's aim is to equip young women with sustainable sanitary products and relevant education about menstrual cycles



HLOMO HLOMO



KwaZulu Wildlife & Community – Hlomo Hlomo

Students will be taught and work alongside the field guides and conservation team. The following examples depict the day-to-day activities that may be undertaken as part of the project at Hlomo Hlomo.

- Sunset bush walk
- Wild dog monitoring
- Full day game drive – big five area
- Black rhino monitoring
- K9 anti-poaching demonstration
- Discussion on realities of rewilding community land
- Talk on illegal wildlife trafficking
- Visit a local rural school with Project Rhino



ABOUT YOUR PROJECT

AFRICA

Project Rhino



ANY QUESTIONS?

INFO@GAPAFRICAPROJECTS.COM | +44 (0)207 1937819

INFORMATION PACK 18



ST LUCIA

A Coastal Adventure

ST LUCIA – COASTAL ADVENTURE

AFRICA

Your Conservation Programme – St Lucia

Whilst at St Lucia you will get the opportunity to take part in some amazing activities but also time to relax in the beautiful coastal resort of St Lucia.

- Hippo and Crocodile tour in the Estuary
- Visit to Cape Vidal Nature Reserve and beach
- Visit to the Crocodile Centre
- Whale Watching Tour (seasonal and additional cost)



WEEKEND ACTIVITIES & EXCURSIONS

AFRICA

Activities/Excursions (own cost and optional)

There will be free time/days off, where you'll be able to do some additional activities at your **own cost**. These are **optional**.

Whalewatching will be booked and paid for by cash in St Lucia.

More information will be given closer to the time. N.B Your travel insurance **must** cover you for any additional activities you choose to do.

Any activities booked and paid for locally are not covered under GAPAfrica Project's personal liability insurance.





ONLINE NATURE GUIDE COURSE

Bushwise

ONLINE NATURE GUIDE COURSE

AFRICA

Exclusive Bushwise Nature Guide Course

Bushwise is a leading nature guide training provider, and we've partnered with them to offer an exclusive 6-week 'Explore Nature' online course – giving you a real-life insight into the training of a South African Nature Guide.

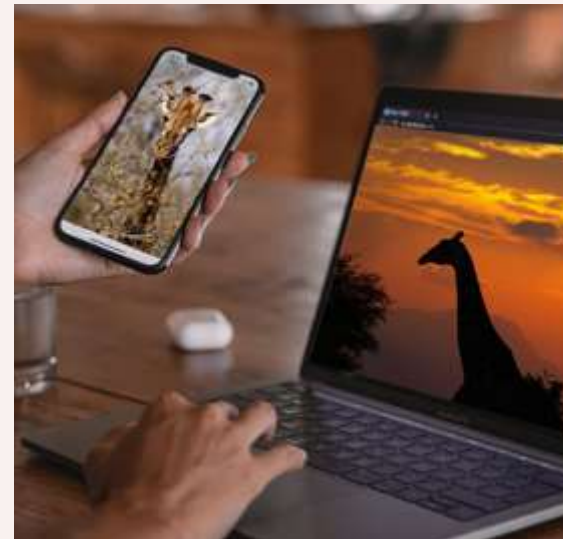
Connect with the South African bush before you even travel!

Modules include Introduction, Geology, Weather & climate, Astronomy, Ecology, Biomes, Taxonomy, Plants, Arthropods, Fish, Amphibians, Reptiles, Birds, Mammals, Ethology, Conservation management, Historical human habitation.

Your wildlife journey starts here! Build a strong foundation in field guiding, wildlife, and ecology, so that you're fully prepared for the hands-on experience in South Africa.



Course Start Dates:
5 January 2026
30 March 2026
22 June 2026
14 September 2026





ACCOMMODATION & LIFESTYLE

Life in the African Bush

Bundu Camp – Bonamanzi

Chalet style accommodation is provided during your time in Bonamanzi Game Reserve. You will be accommodated in twin rooms, 2 rooms share bathroom facilities of shower, toilet and basin.

All guests will eat together in the communal dining room or outside in the covered dining area. On one evening a Potjie competition will be held so everyone gets involved!

There isn't a washing machine, but clothes can be hand washed.



ACCOMMODATION & LIFESTYLE

AFRICA

Hlomo Hlomo

In keeping with a Safari Adventure theme, groups are accommodated on the reserve in comfortable safari tents, with communal hot and cold showers and regular flushing toilets. All meals are provided in a communal dining room.

There isn't a washing machine, but clothes can be hand washed.



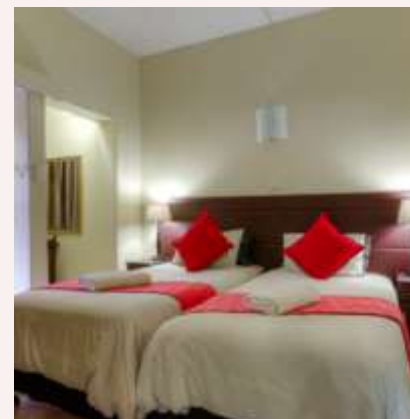
Shonalanga Accommodation – St Lucia

Guest House style accommodation is provided during your time in St Lucia.

You will be accommodated in twin rooms with ensuite facilities.

There are no facilities for washing clothes at the accommodation but there are launderettes nearby which are not expensive.

The guest house is located in the heart of St Lucia's Main Street and is the ideal location to explore the surrounding area.



Food at the Project

Three meals are provided a day prepared by the kitchen staff with the exception of 1 lunch and 1 dinner in St Lucia

Breakfasts will consist of toast and cereals; lunch may include pasta, wraps, burgers, stir fry; dinners include meat, fish and vegetables with rice, potatoes or pasta.

On weekends a braai (BBQ) is often organised.

Dietary Requirements

Provision can be made for Vegetarian & Vegan diets and for those who have a medical condition such as Coeliac disease that requires a Gluten Free Diet and for those with severe allergies to dairy, eggs or nuts.





USEFUL INFORMATION

Inclusions/Exclusions &
Recommended Kit List

WHAT'S INCLUDED

AFRICA

What is Included?

- Flights
- Transfers to/from project
- Accommodation
- Three meals a day
- All activities as part of the project
- Airport meet/greet
- 24/7 In country support

NOT Included

- UK transfers
- Personal Travel Insurance *
- Meals on travel days – before arriving & after departing from project
- 1 lunch and 1 dinner at St Lucia
- Any activities not specified as part of the project
- Visas/travel documents
- Tips

* We recommend you take out insurance as soon as your booking is confirmed



Suggested kit list

To allow for ease of transfer to the project a soft holdall/ soft suitcase is preferred.

- Short and long sleeve t-shirts
- Long work trousers and shorts (or work/zip-off trousers)
- Hiking boots/comfortable walking shoes to work in every day
- Waterproof jacket
- Sweatshirt/Fleece (Winter months pack plenty)
- Padded jacket/windbreaker (Winter months) although it can get very cold on an open vehicle even in summer
- Socks
- Underwear
- Change of casual clothes for evenings
- Sandals / comfy shoes to wear after work hours
- Warm hat (Winter only) / Hat for sun protection (all year)
- Gloves for warmth (Winter only)
- Daypack rucksack
- Swimwear
- Beach Towel
- Sunscreen and Sunglasses
- Personal medical items
- First aid kit
- Toiletries
- Tick / Insect repellent
- Water bottle

Other useful items:

- Binoculars
- Camera
- Power bank
- Good torch

* All work clothes should be neutral or earth tones for working in the bush. No skimpy or bright-coloured clothing to be worn



GLOBAL reach. **ADVENTURE** for all. **PROJECTS** to inspire.

Explore our network of Global Adventure Projects:



GLOBALADVENTUREPROJECTS.COM

