



SCOTLAND'S RURAL COLLEGE PROJECT INFORMATION PACK



KwaZulu-Natal Wildlife & Veterinary Project

GLOBAL reach. **ADVENTURE** for all. **PROJECTS** to inspire.



TRIP OVERVIEW

AFRICA

Scotland's Rural College – Booking Reference 4703

Trip Dates:

7th June – 20th June 2026

Flights:

Flight No	Flight Date	Dept.	Dept. Time	Arr.	Arr. Time
VS449	07/06/2026	London Heathrow (LHR)	22:25	Johannesburg (JNB)	10:25 + 1 Day
VS450	20/06/2026	Johannesburg (JNB)	20:25	London Heathrow (LHR)	06:30 + 1 Day

*Always check the flight timings on your final documents

Baggage Allowance – 1 piece of checked baggage @ 23kgs & 1 piece of hand baggage @ 7kgs and max dimensions 56x36x23cm

Project:

KwaZulu-Natal Wildlife & Veterinary Project – Nambiti Game Reserve & Zingela Wilderness Reserve

Trip Cost:

£2595.00 per person (to be confirmed once flights are available)

£300.00 Deposit

£1147.50 Instalment due 16/02/2026

£1147.50 Balance due 13/04/2026



AFRICA

ABOUT THE PROJECT

Overview and location
of the project

KwaZulu-Natal Wildlife & Veterinary Project

Our academic team and qualified rangers at the KwaZulu-Natal Wildlife & Veterinary Project offer a bespoke course tailored to each institution's personal objectives and learning needs. We structure the trip as a 12-night academic module, split between two conservation reserves.

As part of the experience, we bring in wildlife veterinarians who spend time with the group, sharing their expertise and offering hands-on learning opportunities. Additionally, we involve the group in local community projects, where they assist in caring for livestock and domestic animals, providing a broader understanding of the local ecosystem and community needs.

A full day will be planned but will vary from day to day depending on the days task and research goals.

The project split and duration are as follows:

12 Night Itinerary

6 Nights

Nambiti Big 5 Conservation Research

6 Nights

Zingela Wilderness Conservation and Adventure Activities

It's important to remember that wildlife does not work to an agenda, therefore activities may change at short notice!



KwaZulu-Natal Conservation Research Project- Location

- South Africa a world leader in conservation
- Malaria free KwaZulu Natal





AFRICA

6 Nights at Nambiti Game Reserve

A Big Five Game Reserve

ABOUT THE PROJECT

AFRICA

Nambiti Game Reserve (6 Nights)

Nambiti Game Reserve is a magnificent 23,000 acres of unspoiled wilderness boasting the Big 5 and incredible biodiversity (grasslands, riverine bush, savannah and thornveld) offering unprecedented diversity of wildlife.



YOUR PROJECT

AFRICA

Your Conservation Programme – Nambiti

Students will be taught and work alongside the field guides and conservation team. The following examples depict the day-to-day activities that may be undertaken as part of the project at Nambiti.

- Alien Vegetation Control & Reserve Maintenance
- Use of Telemetry Tracking
- Elephant Monitoring / Population Study
- Rhino Monitoring – Awareness
- Anti-poaching talk and fence walk
- Camera Trapping
- Night Drive
- Big Five Bush Walk
- Habitat and Prey Selection of Predators
- Tracks, Signs and Spoor
- Community Development
- Veterinary Interaction – Possible Wildlife Intervention



YOUR PROJECT

AFRICA

Community Projects & Zulu Culture

A chance for academic groups to meet the locals living around the game reserves

The opportunity to meet chiefs and experience traditional Zulu culture first hand

Projects: Move Africa, Jabong Hats, Project Rhino and Rhino Art





AFRICA

6 Nights at Zingela Nature Reserve

River Research and Adventure

ABOUT THE PROJECT

AFRICA

Zingela River Safari (6 Nights)

Zingela Wildlife Reserve covers 12,500 acres of predator free, pristine African bushveld. You will have the opportunity to be involved with the research that takes place at the property;. You will also have the chance to participate in a host of activities during your stay.



ANY QUESTIONS?

INFO@GAPAFRICAPROJECTS.COM | +44 (0)207 1937819

INFORMATION PACK 11

Your Conservation Programme – Zingela

Students will be taught and work alongside the field guides and scientific team. The following examples depict the day-to-day activities that may be undertaken as part of the project at Zingela Reserve.

- Spatial Distribution and Habitat use of species
- Use of Telemetry Tracking
- Giraffe Migration and Conservation Project
- Reptile Pit Fall Traps
- Freshwater Ecology
- Mini SASS
- Fish Tagging
- Educational Bush Walks – Ecology & Botany
- Tracks, Signs and Spoor
- Community Development
- Camera Trapping and Data Processing



ZINGELA WILDERNESS RESERVE

AFRICA

Giraffe Migration and Research Project

Population data and database for individuals

Migration and range data through unfenced territories

Diet and vegetation impact assessment

Genetic diversity



ZINGELA WILDERNESS RESERVE

AFRICA

River Assessments –

Fresh water eel project – understanding life cycle using GPS data

Fish tagging and release

Collecting biometric data

SASS – South African Scoring System



ZINGELA WILDERNESS RESERVE

AFRICA

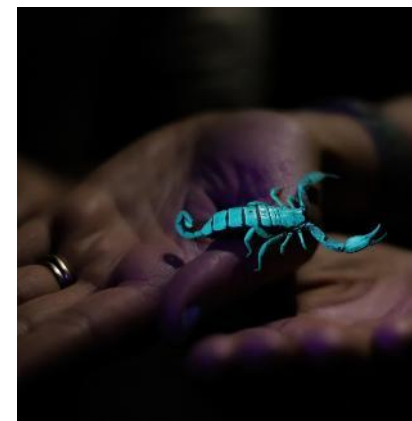
Reptile Research and Trapping

Data collection started in 2022 with annual projects planned

Species frequency

Herpetofauna succession during vegetation rehabilitation

Comparing herpetological diversity



Bush Walks and Ecology Trails

One of the unique aspects of the KwaZulu-Natal Conservation project is the ability to utilise the reserves for walking trails and ecology lessons.

Groups will be accompanied by professional guides as they navigate through the reserve observing the smaller aspects of the flora and fauna that the African Bush has to offer.

Along the way the guide will identify edible and poisonous plants, as well as those of cultural significance, enhancing the educational value of the hike.



YOUR PROJECT

AFRICA

Animal Welfare Outreach Program

Participants will join the camp's in-house veterinarian to assist local Zulu farmers in caring for their livestock, primarily goats, but also including dogs, cats, sheep, and cattle, depending on the participants' qualifications and experience.

Vaccinating and Caring for Local Farmers' Goats

Working with Various Animals at the Homestead

Animal Welfare Education at Local Schools



ABOUT THE PROJECT

AFRICA

Dr. Jenny Ann Preiss – State Veterinarian and Assistant Manager at Zingela

- Graduated from University of Pretoria in 2009
- State Veterinarian (with Kwa-Zulu Natal Department of Agriculture) for 14 years
- Joined Zingela team in 2024 heading up the Zingela Community Extension Project
- Current focus on primary animal health care surrounding Zingela as well as extension on veterinary matters, vaccinating livestock with assistance from GAP Africa Projects



ABOUT THE PROJECT

AFRICA

Dr. Ryan van Deventer – Wildlife Veterinarian with Wildlife Solutions

- Graduated from University of Pretoria in 2000
- Expert in wildlife veterinary medicine, surgery, capture and translocation.
- 13 years working at Wildlife Solutions
- Former Veterinarian at Vet2pet mobile clinic
- Veterinary care on the frontlines of African conservation.
- Passionate about wildlife medicine



ANY QUESTIONS?

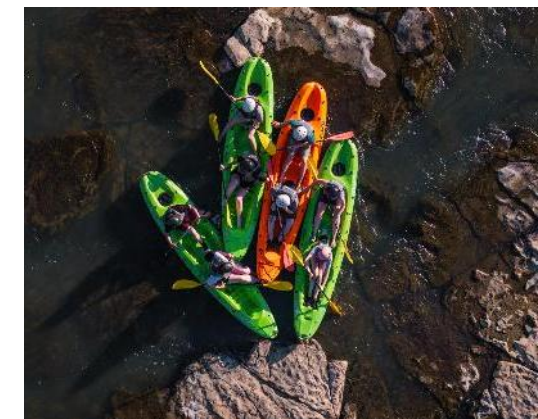
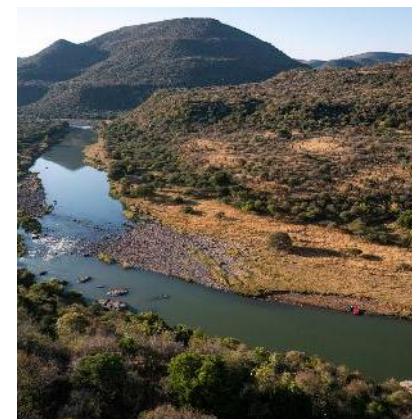
INFO@GAPAFRICAPROJECTS.COM | +44 (0)207 1937819

INFORMATION PACK 19

Activities and Adventure– Kayaking

A recreational activity offering a break from the academic schedule, participants will kayak 3km down the Tugela River, navigating beginner-friendly Grade 1 & 2 rapids.

This relaxing excursion also provides excellent birdwatching opportunities from the water.



Activities and Adventure– Abseiling

The 35m abseil at Zingela offers stunning views and an exhilarating descent led by accredited expert guides.

This activity provides a unique opportunity to experience the natural beauty of the Tugela River Valley from a new perspective.



Potjie Cooking Competition

A traditional South African experience, the Potjie competition involves cooking a stew in three-legged pots over an open fire. Teams of 6-8 participants will compete, starting with the challenge of lighting the fire. This activity promotes teamwork and serves as a fun icebreaker in a relaxed, festive environment. The winning dish, judged by our expert cooks, will be served for dinner, allowing everyone to enjoy the fruits of their labour.



Animal Welfare Outreach Program

Vaccinating and Caring for Local Farmers' Goats

This activity is suitable for all animal management students. Participants will assist in catching goats for health inspections and administering necessary treatments. Even those with minimal experience can contribute – on a previous trip, two students managed to catch 11 goats each on their first outing.

Working with Various Animals at the Homestead

Ideal for vet nurses, particularly those who have been vaccinated against rabies and tetanus. This aspect involves treating domestic animals such as dogs, cats and chickens at local homesteads.

Animal Welfare Education at Local Schools

This educational initiative is aimed at children, who are often responsible for the care of young animals. By providing education on proper animal care, participants can make a lasting impact on the community. This activity is suitable for all animal management students.

In addition to these specific activities, the group will also visit local schools to further engage with students and promote responsible animal care, focusing on livestock as well as domestic pets.





AFRICA

ACCOMMODATION & LIFESTYLE

Life in the African Bush

Game Reserve Camps - Nambiti

In keeping with the Safari Adventure theme, groups are accommodated on the reserve in shared comfortable safari tents, with communal hot and cold showers and regular flushing toilets.

All meals are provided in a communal dining area. Students are expected to help clear up after meals.



ACCOMMODATION

AFRICA

Game Reserve Camps – Zingela



ANY QUESTIONS?

INFO@GAPAFRICAPROJECTS.COM | +44 (0)207 1937819

INFORMATION PACK 26

ACCOMMODATION

AFRICA

Food at the project

Three meals are provided a day prepared by the kitchen staff.

Breakfasts will consist of toast and cereals; lunch may include pasta, wraps, burgers, stir fry; dinners include meat, fish and vegetables with rice, potatoes or pasta.

On weekends a braai (BBQ) is often organised.

Please advise us of any dietary requirements in advance so we can ensure that you are adequately catered for.





AFRICA

USEFUL INFORMATION

Inclusions/Exclusions &
Recommended Kit List



WHAT'S INCLUDED

AFRICA

What is included?

- Flights
- Transfers to/from project
- Accommodation
- Three meals per day
- All activities as part of the project
- Airport meet/greet
- 24/7 In country support



NOT Included

- Personal Travel Insurance *
- Meals on travel days – before arriving & after departing from project
- Any activities not specified as part of the project
- Visas/travel documents
- Tips

* We recommend you take out insurance as soon as your booking is confirmed

Suggested kit list

To allow for ease of transfer to the project a soft holdall/ soft suitcase is preferred.

- Wellington boots (long or short for travel Jan – April)
- Short and long sleeve t-shirts
- Long work trousers and shorts (or work/zip-off trousers)
- Hiking boots/comfortable walking shoes to work in every day
- Waterproof jacket
- Sweatshirt/Fleece (June – Aug) – pack plenty
- Padded jacket/windbreaker (June – Aug) although it can get very cold on an open vehicle even in summer
- Socks and Underwear
- Change of casual clothes for evenings
- Sandals / comfy shoes to wear after work hours
- Warm hat (June – Aug / Hat for sun protection (all year)
- Gloves for warmth (June –Aug)
- Working gloves
- Daypack rucksack
- Micro-fibre sleeping bag liner (for extra warmth)
- Surgical gloves
- Beach Towel (micro-fibre takes less space)
- Sunscreen and Sunglasses
- Personal medical items
- First aid kit
- Toiletries
- Tick / Insect repellent
- Water bottle
- Binoculars
- Good torch (headlamp/torch is best)

Other useful items:

- Camera
- Power bank
- Water shoes
- Stethoscope

* All work clothes should be neutral or earth tones for working in the bush. No skimpy or bright-coloured clothing to be worn



GLOBAL reach. **ADVENTURE** for all. **PROJECTS** to inspire.

Explore our network of Global Adventure Projects:



GLOBALADVENTUREPROJECTS.COM

