



# SOUTH EASTERN REGIONAL COLLEGE PROJECT PRESENTATION



## Waterberg Biomonitoring Programme



**GLOBAL** reach. **ADVENTURE** for all. **PROJECTS** to inspire.



**AFRICA**

# **ABOUT THE WATERBERG**

Project overview and  
location

# ABOUT THE WATERBERG

AFRICA

## Your Conservation Field Trip Explained

- A unique conservation experience based in South Africa
- Live & work in 2 research camps on a wild African game reserve
- 13 night programme specifically tailored
- Learn about conservation management
- Project Activities include:
  - Pioneering Conservation Research
  - Conservation Activities
  - Possible Veterinary intervention
- Dedicated vehicles and conservation staff
- The most incredible wildlife experience you will ever have

# ABOUT THE WATERBERG

AFRICA

## Waterberg Biomonitoring Project

Our academic team and qualified rangers at the Waterberg Biomonitoring Project offer a bespoke course to each institution dependent on their own personal objectives and learning needs.

This is not a Safari Holiday!

A full day will be planned but will vary from day to day depending on the days task and research goals.

### 13 Night Project

- 7 Nights at Welgevonden Game Reserve
- 6 Nights at SwebeSwebe Nature Reserve



## Waterberg Biomonitoring Programme – Location



# ABOUT THE WATERBERG

AFRICA

*TRUE WILDERNESS*



ANY QUESTIONS?

[INFO@GAPAFRICAPROJECTS.COM](mailto:INFO@GAPAFRICAPROJECTS.COM) | +44 (0)207 1937819

PROJECT PRESENTATION 6

# ABOUT THE WATERBERG

AFRICA

*TRUE WILDERNESS*



ANY QUESTIONS?

[INFO@GAPAFRICAPROJECTS.COM](mailto:INFO@GAPAFRICAPROJECTS.COM) | +44 (0)207 1937819

PROJECT PRESENTATION 7

## What is a Game Reserve?

- A game reserve is a large area of protected land where wild animals can live safely.
- Wildlife is free roaming throughout the reserve allowing them to thrive in their natural habitat.
- Reserves are either Government Owned (National Parks) or Privately Owned/Managed.
- Most reserves will have physical boundaries i.e. electrified fence line.
- Due to physical boundaries, wildlife must be managed due to restraints on population growth, migration and resources.
- Wildlife is protected but also utilised as a tourist attraction (Eco Tourism) which creates funding for conservation efforts and research.



A large rhinoceros and its calf are the central focus of the image, standing in a lush green savanna. The rhinoceros is on the right, and the calf is on the left, both facing towards the left. In the background, there are several tents with green roofs, suggesting a camp or lodge. The overall scene is bright and sunny, with a clear sky and vibrant green grass. A semi-transparent circular graphic is overlaid on the right side of the image, partially covering the rhinoceros and calf.

**AFRICA**

# **ABOUT THE PROJECT: WELGEVONDEN GAME RESERVE**

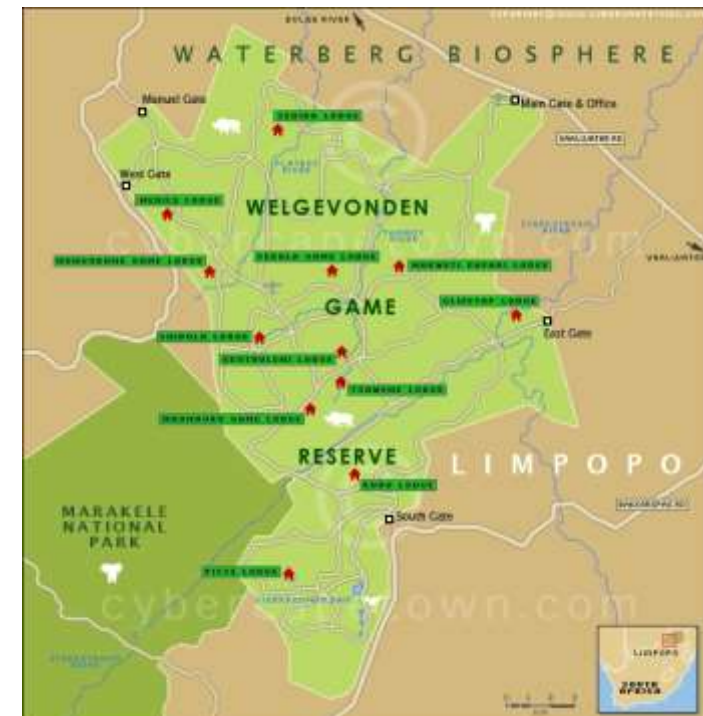
Our conservation work  
in more detail

# ABOUT WELGEVONDEN

AFRICA

## Welgevonden Game Reserve

- 36,000 Hectare Privately Managed Game Reserve
- Forming part of the Waterberg Biosphere
- Work alongside the conservation team including:
  - Wildlife Vets
  - Conservation Researchers
  - Ecologists
  - Anti Poaching Unit
- Located in a Malaria free zone
- Proclaimed Protected Conservation Area
- Savannah Eco System
- Research Camp Accommodation

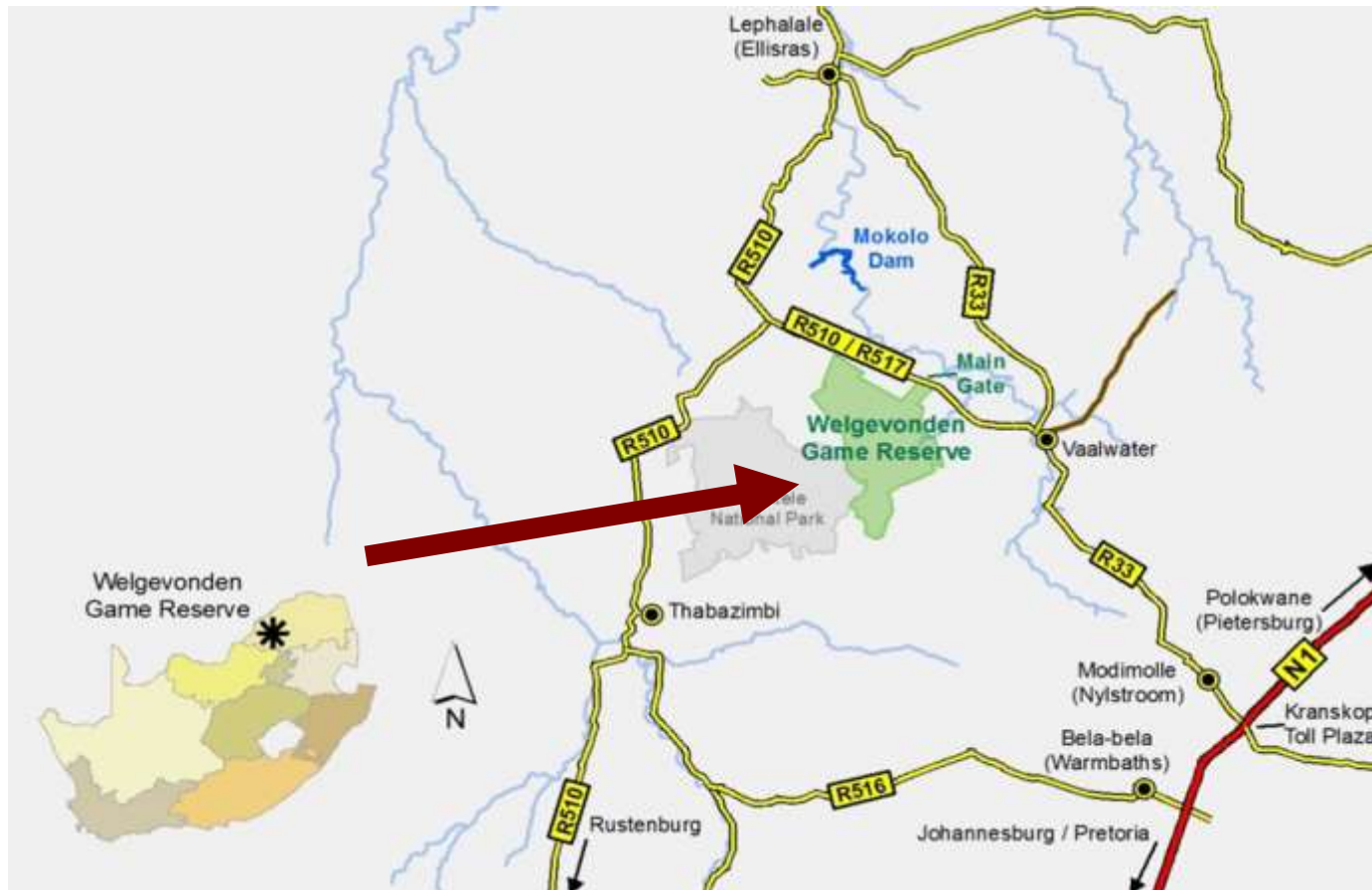


# ABOUT WELGEVONDEN

AFRICA

## Welgevonden Game Reserve - Location

- South Africa a world leader in conservation
- Malaria free Waterberg Plateau



# ABOUT WELGEVONDEN

AFRICA

## Home to the BIG 5



ANY QUESTIONS?

[INFO@GAPAFRICAPROJECTS.COM](mailto:INFO@GAPAFRICAPROJECTS.COM) | +44 (0)207 1937819

PROJECT PRESENTATION 13

# ABOUT WELGVONDEN

AFRICA

Home to over 60 Species of Mammal



ANY QUESTIONS?

[INFO@GAPAFRICAPROJECTS.COM](mailto:INFO@GAPAFRICAPROJECTS.COM) | +44 (0)207 1937819

PROJECT PRESENTATION 14

# ABOUT WELGEVONDEN

AFRICA

Many Reptile, Insect and Bird Species



# ABOUT THE PROJECT

AFRICA

## Bush Skills – Bush Walks, Tracking Wildlife



ANY QUESTIONS?

[INFO@GAPAFRICAPROJECTS.COM](mailto:INFO@GAPAFRICAPROJECTS.COM) | +44 (0)207 1937819

PROJECT PRESENTATION 17

# ABOUT THE PROJECT

AFRICA

## Research – Habitat and Prey Selection: Predators



ANY QUESTIONS?

[INFO@GAPAFRICAPROJECTS.COM](mailto:INFO@GAPAFRICAPROJECTS.COM) | +44 (0)207 1937819

PROJECT PRESENTATION 18

# ABOUT THE PROJECT

AFRICA

## Camera Trap – Research and Study



ANY QUESTIONS?

[INFO@GAPAFRICAPROJECTS.COM](mailto:INFO@GAPAFRICAPROJECTS.COM) | +44 (0)207 1937819

PROJECT PRESENTATION 19

# ABOUT THE PROJECT

AFRICA

## Anti-Poaching Unit



ANY QUESTIONS?

[INFO@GAPAFRICAPROJECTS.COM](mailto:INFO@GAPAFRICAPROJECTS.COM) | +44 (0)207 1937819

PROJECT PRESENTATION 20

# ABOUT THE PROJECT

AFRICA

## Monitoring the Welgevonden Rhino Population

Behavioural observations, body condition, herd structure, photos and GPS locations are recorded to document where the animals are occurring; keeping tabs on the localities and activities of Black and White Rhino on Welgevonden.



# ABOUT THE PROJECT

AFRICA

## Research – Elephant Monitoring



ANY QUESTIONS?

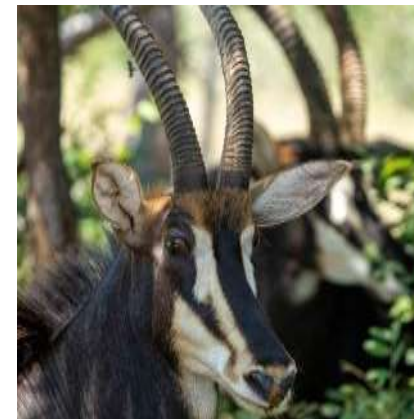
[INFO@GAPAFRICAPROJECTS.COM](mailto:INFO@GAPAFRICAPROJECTS.COM) | +44 (0)207 1937819

PROJECT PRESENTATION 22

# ABOUT THE PROJECT

AFRICA

## Monitoring Herbivore Condition and Health



# ABOUT THE PROJECT

AFRICA

## Free-roaming Waterberg Wild Dog – Talks



ANY QUESTIONS?

[INFO@GAPAFRICAPROJECTS.COM](mailto:INFO@GAPAFRICAPROJECTS.COM) | +44 (0)207 1937819

PROJECT PRESENTATION 24

A large rhinoceros and its calf are the central focus of the image, standing in a lush green savanna. The rhinoceros is on the right, and the calf is on the left, both facing towards the left. In the background, there is a tented camp with several tents and a dirt path. The overall scene is a natural, outdoor setting with trees and a clear sky.

**AFRICA**

# **ABOUT THE PROJECT: SWEBESWEBE NATURE RESERVE**

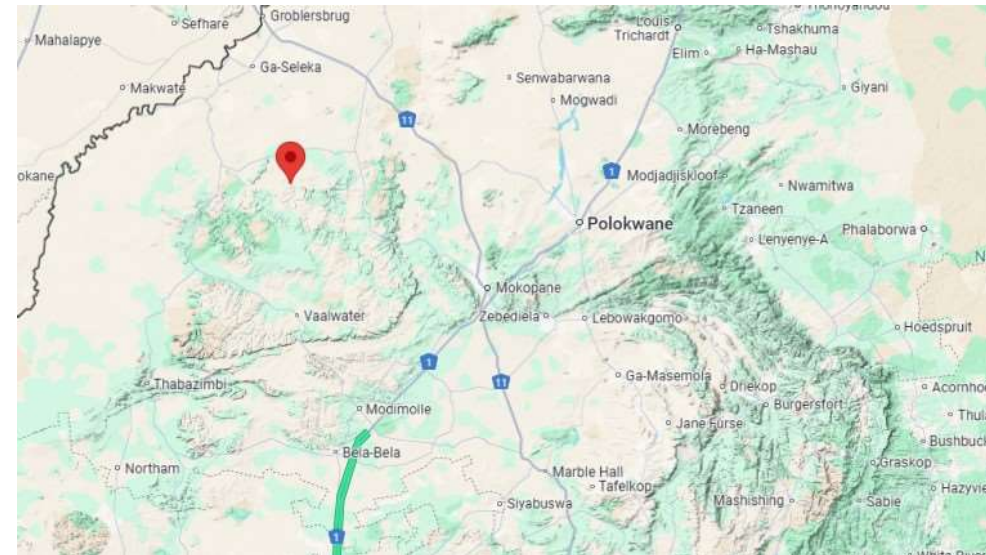
Our conservation work  
in more detail

# ABOUT SWEBESWEBE

AFRICA

## Hanover & SwebeSwebe Nature Reserve

- 9,000 Hectare Privately Managed Reserve
- Forming part of the Waterberg Biosphere
- Unique to GAP Africa Projects
- Work alongside the conservation team including:
  - Conservation Researchers
  - Ecologists
- Located in a Malaria free zone
- Proclaimed Protected Conservation Area
- Savannah Eco System
- Research Camp Accommodation

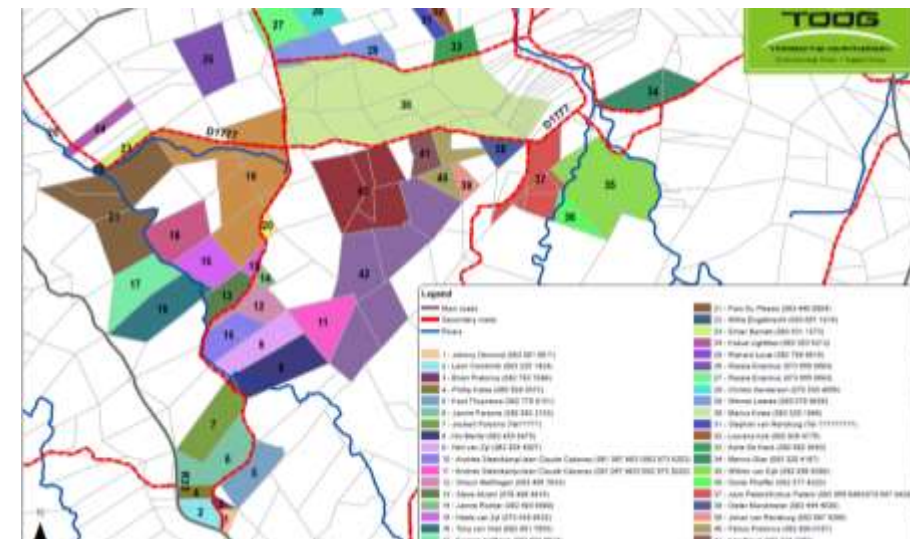
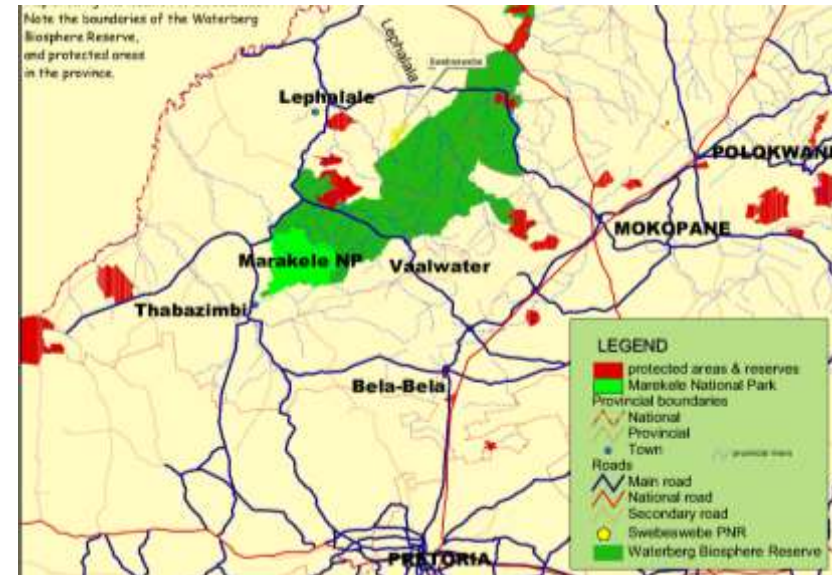


# ABOUT SWEBESWEBE

AFRICA

## The Vision

- Restore and protect a resilient, biodiverse landscape at ecosystem scale
- Create an open conservancy by removing internal fences and implementing joint management plans with neighbouring properties
- Operate as a living laboratory for applied conservation science and field-based learning
- Integrate habitat restoration, species monitoring, and sustainable land management



## Project Overview – SwebeSwebe Nature Reserve

- Alien Plant Mapping
- Grass Surveys
- Butterfly Surveys
- Bird Ringing
- Mini Sass in the river
- Giraffe Monitoring
- Game Counts
- Scorpion Hunt
- Grass Survey
- Invert Sweeps



# ABOUT THE PROJECT

AFRICA

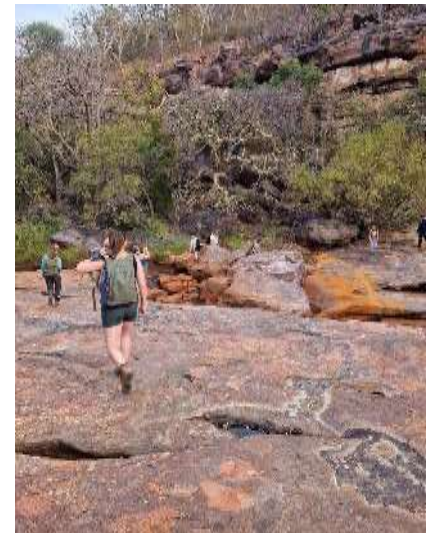
## Tracks, signs and spoors



# ABOUT THE PROJECT

AFRICA

## Ecology Walks



ANY QUESTIONS?

[INFO@GAPAFRICAPROJECTS.COM](mailto:INFO@GAPAFRICAPROJECTS.COM) | +44 (0)207 1937819

PROJECT PRESENTATION 32

# ABOUT THE PROJECT

AFRICA

## Giraffe Research Project

- Population data and database for individuals
- Diet and vegetation impact assessment



# ABOUT THE PROJECT

AFRICA

## River Assessments



ANY QUESTIONS?

[INFO@GAPAFRICAPROJECTS.COM](mailto:INFO@GAPAFRICAPROJECTS.COM) | +44 (0)207 1937819

PROJECT PRESENTATION 34

# ABOUT THE PROJECT

AFRICA

## Ecological Monitoring Research: Herpetology, Entomology, Arachnology

Species frequency

Herpetofauna succession during  
vegetation rehabilitation

Comparing herpetological diversity



# ABOUT THE PROJECT

AFRICA

## Bird Ringing & Identification



ANY QUESTIONS?

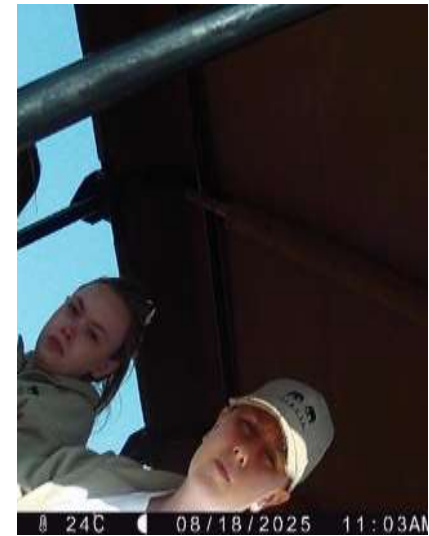
[INFO@GAPAFRICAPROJECTS.COM](mailto:INFO@GAPAFRICAPROJECTS.COM) | +44 (0)207 1937819

PROJECT PRESENTATION 36

# ABOUT THE PROJECT

AFRICA

## Camera Traps



ANY QUESTIONS?

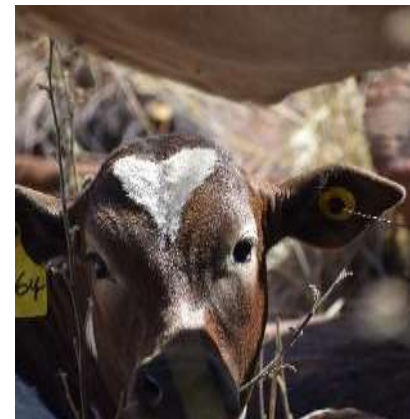
[INFO@GAPAFRICAPROJECTS.COM](mailto:INFO@GAPAFRICAPROJECTS.COM) | +44 (0)2071937819

PROJECT PRESENTATION 37

# ABOUT THE PROJECT

AFRICA

## Regenerative Grazing Project



ANY QUESTIONS?

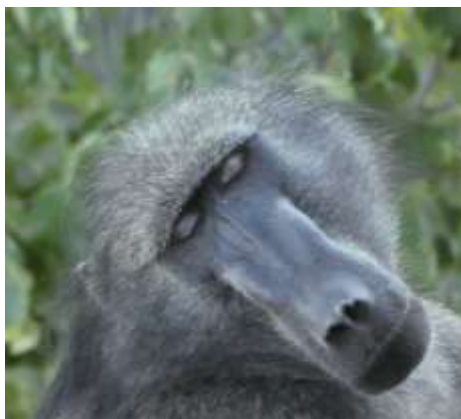
[INFO@GAPAFRICAPROJECTS.COM](mailto:INFO@GAPAFRICAPROJECTS.COM) | +44 (0)207 1937819

PROJECT PRESENTATION 38

# ABOUT THE PROJECT

AFRICA

## Swebeswebe Primate Project



ANY QUESTIONS?

[INFO@GAPAFRICAPROJECTS.COM](mailto:INFO@GAPAFRICAPROJECTS.COM) | +44 (0)207 1937819

PROJECT PRESENTATION 39

# ABOUT THE PROJECT

AFRICA

## Habitat Management



ANY QUESTIONS?

[INFO@GAPAFRICAPROJECTS.COM](mailto:INFO@GAPAFRICAPROJECTS.COM) | +44 (0)207 1937819

PROJECT PRESENTATION 40

# ABOUT THE PROJECT

AFRICA

## Lectures

- Welcome to Hanover and SwebeSwebe
- Waterberg Wild Dogs
- Baboon Project
- Use of Earth Ranger



## Other Possible Activities: Non-Research

Beyond research, students will have the opportunity to immerse themselves in unique and enriching experiences:

### San Rock Art Talk and Trail:

Learn about the fascinating history and cultural significance of ancient San rock art, followed by a guided trail to a rock painting site for an up-close exploration.

### Stargazing:

Experience the breathtaking clarity of the southern hemisphere's night sky, free from light pollution and discover the stories and science behind its constellations.

### Fresh Water Swimming:

Enjoy the serenity of our 20 km stretch of pristine riverine habitat, with scenic swimming spots perfect for relaxation and connection with nature.

### Potjie Cooking Competition:

Embrace South African tradition with a lively potjie (cast-iron pot stew) cooking competition. Students will team up to prepare their own creations over open fires.





**AFRICA**

# ACCOMMODATION & LIFESTYLE

Life in the African Bush

# ACCOMMODATION & LIFESTYLE

AFRICA

## Welgevonden Accommodation

The student centre and camp is based on the reserve and boasts ten tents that sleep two people per tent in single beds, each tent also has lighting and electricity supply.

There are communal hot and cold showers and regular flushing toilets. There are communal facilities including a lecture room, canteen, lounge, entertainment area and storage fridge.

The centre also has access to Wi-Fi.

The camp is fenced off inside the boundaries of the reserve.



## SwebeSwebe – Hanover Nature Reserve Accommodation

Students and academic groups will be accommodated at our purpose-built camp on Hanover Nature Reserve, designed to provide comfort and foster community living. The camp features shared twin and triple rooms with communal ablution facilities. At the heart of the camp is a spacious communal area, equipped with a shared kitchen and dining space, which also serves as a hub for relaxation, lectures, and group activities.

For evening gatherings, there's a cozy firepit/boma area where students can unwind and cook meals over the fire under the stars. On weekends, groups are welcome to enjoy the main farmhouse and pool area for some well-deserved relaxation. Ingredients for meals are provided, and students cook together, creating a vibrant and social camp atmosphere.



## Meals

At both Welgevonden and SwebeSwebe, ingredients for three meals a day are provided, on a self cook basis. Students will take part in communal cooking and keeping the kitchen tidy. This creates a vibrant and social camp atmosphere.

All meals are provided in the communal dining room, there is an outside area for dining as well.

Meals will either be served at the facility or in the field 'picnic' style, this depends on activities either planned or unscheduled.

The research team often work 6 days a week so time off is often limited to Sundays only.

Most evenings are spent at leisure around the camp.



# WHY SHOULD I TRAVEL?

AFRICA

## What do previous travellers say about the Waterberg Biomonitoring Project?



"Staying at Welgevonden really developed my knowledge of animal behaviours."



"Everything exceeded my expectations, and the trip was life-changing."



"The staff were amazing, we got the opportunity to take part in practicals and demonstrations."

Reference: GAP Africa Projects Post Project Trip Questionnaire 23/24

# WHY SHOULD I TRAVEL?

AFRICA

## What do previous travellers say about the Waterberg Biomonitoring Project?



"It has inspired me to look into overseas **volunteering** opportunities next year."



"I have returned home feeling more self-confident and **independent**, it was brilliant."



"I am more **humbled**. I now know what I want to do moving forward career-wise."

Reference: GAP Africa Projects Post Project Trip Questionnaire 23/24



**GLOBAL** reach. **ADVENTURE** for all. **PROJECTS** to inspire.

Explore our network of Global Adventure Projects:



[GLOBALADVENTUREPROJECTS.COM](http://GLOBALADVENTUREPROJECTS.COM)

