



# DUCHY COLLEGE (ROSEWARNE) PROJECT PRESENTATION



## KwaZulu-Natal Wildlife & Community

**GLOBAL** reach. **ADVENTURE** for all. **PROJECTS** to inspire.





**AFRICA**

# **KWAZULU-NATAL WILDLIFE & COMMUNITY PROJECT OVERVIEW**

Overview and location  
of the project

# ABOUT THE PROJECT

AFRICA

## Your Conservation Field Trip Explained

- A unique academic conservation experience based in South Africa
- Live and work in the wilds of Africa
- The opportunity to experience hands on wildlife conservation
- Bespoke, tailor-made projects to suit research requirements
- Project Activities include:
  - Pioneering Conservation Research
  - Conservation Activities
  - Cultural Enrichment
- Full 12 nights in South Africa
- The most incredible wildlife experience you will ever have

## What is a Game Reserve?

- A game reserve is a large area of protected land where wild animals can live safely
- Wildlife is free roaming throughout the reserve allowing them to thrive in their natural habitat
- Reserves are either Government Owned (National Parks) or Privately Owned/Managed
- Most reserves will have physical boundaries i.e. electrified fence line
- Due to physical boundaries, wildlife must be managed due to restraints on population growth, migration and resources
- Wildlife is protected but also utilised as a tourist attraction (Eco Tourism) which creates funding for conservation efforts and research





**AFRICA**

# ABOUT THE PROJECT

Our conservation work  
in more detail

## KwaZulu-Natal Wildlife Community

Our academic team and qualified rangers at the KwaZulu Wildlife & Community Project offer a bespoke course to each institution dependent on their own personal objectives and learning needs.

We set out the basis of the trip, comprising of a 12-night academic module split between the conservation reserve and the surrounding community with 3 nights at St Lucia Coastal Unit.



A full day will be planned but will vary from day to day depending on the day's task and research goals.

The project split and duration are as follows:

### 12-Night Itinerary

**3 nights**

St Lucia Coastal Project

**9 nights**

Bonamanzi Game Reserve and Hluhluwe surrounds

# ABOUT THE PROJECT

AFRICA

## Location





**AFRICA**

# **3 NIGHTS IN ST LUCIA**

A Coastal Adventure

## St Lucia Wetlands (3 Nights)

**St. Lucia** is situated on the northern side of the estuary, the largest in Southern Africa and is totally surrounded by the Greater St. Lucia Wetlands Park and World Heritage Site. The area is famous for its wetlands and is a fantastic opportunity to witness crocodiles and hippos in their natural environment.



# ST LUCIA – COASTAL ADVENTURE

AFRICA

## Your Conservation Programme – St Lucia

Whilst at St Lucia you will get the opportunity to take part in some amazing activities but also time to relax in the beautiful coastal resort of St Lucia.

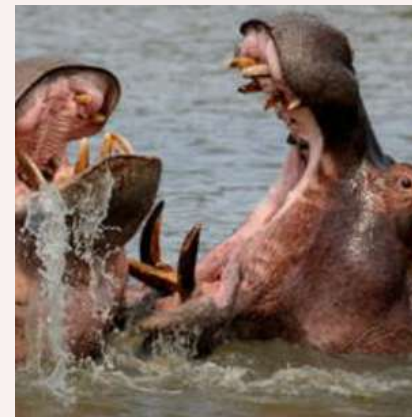
- Hippo and Crocodile tour in the Estuary
- Visit to Cape Vidal Nature Reserve and beach
- Visit to the Crocodile Centre
- Whale Watching Tour (seasonal and additional cost)



# ST LUCIA – COASTAL ADVENTURE

AFRICA

## Estuary Hippo and Crocodile Tour



ANY QUESTIONS?

[INFO@GAPAFRICAPROJECTS.COM](mailto:INFO@GAPAFRICAPROJECTS.COM) | +44 (0)207 1937819

INFORMATION PACK 11

# ST LUCIA – COASTAL ADVENTURE

AFRICA

## Cape Vidal Nature Reserve



ANY QUESTIONS?

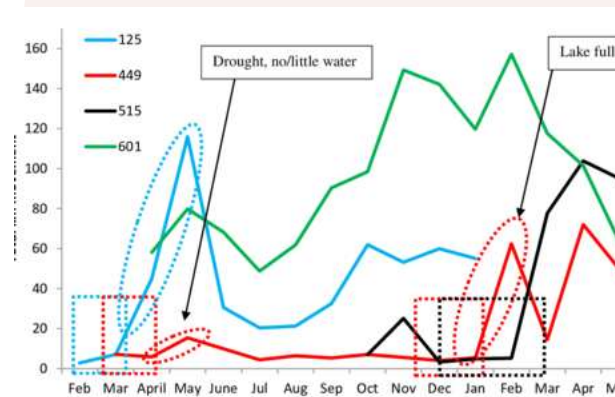
[INFO@GAPAFRICAPROJECTS.COM](mailto:INFO@GAPAFRICAPROJECTS.COM) | +44 (0)207 1937819

INFORMATION PACK 12

# ST LUCIA – COASTAL ADVENTURE

AFRICA

## Crocodile Research Centre



# ST LUCIA – COASTAL ADVENTURE

AFRICA

**Whale Watching (Additional Cost) Mid June – October & weather dependant**



ANY QUESTIONS?

[INFO@GAPAFRICAPROJECTS.COM](mailto:INFO@GAPAFRICAPROJECTS.COM) | +44 (0)207 1937819

INFORMATION PACK 14



**AFRICA**

# **9 NIGHTS IN BONAMANZI/HLUHLUWE**

A Big Four Game Reserve

# BONAMANZI GAME RESERVE

AFRICA

## Bonamanzi Game Reserve – 9 Nights

Bonamanzi Game Reserve is a magnificent 10,000 acres of unspoiled wilderness boasting the Big 4 and incredible biodiversity (grasslands, riverine bush, savannah and thornveld) offering unprecedented diversity of wildlife.



# ABOUT THE PROJECT

AFRICA

## Bonamanzi

Bonamanzi is a privately owned Game Reserve, 10,000 acres in size with the Hluhluwe River on its Eastern border.

Proclaimed a Natural Heritage Site in 1995 in recognition of the biodiversity of the Reserve it offers sand forests, savanna and wetland areas. This diversity is why Bonamanzi is recognised as one of the best birding destinations in Southern Africa.



# BONAMANZI GAME RESERVE

AFRICA

Home to over 40 Species of Mammal



ANY QUESTIONS?

[INFO@GAPAFRICAPROJECTS.COM](mailto:INFO@GAPAFRICAPROJECTS.COM) | +44 (0)207 1937819

INFORMATION PACK 18

# BONAMANZI GAME RESERVE



## Birds /Reptiles



# BONAMANZI GAME RESERVE

AFRICA

## Your Conservation Programme

Students will be taught and work alongside the field guides and the conservation team. The following examples depict the day-to-day activities that may be undertaken as part of the project.

- Use of Telemetry Tracking
- Elephant Monitoring
- Rhino Monitoring – Awareness
- Anti-poaching talk and fence walk
- Camera Trapping
- Night Drive
- Alien Vegetation Control / Reserve Maintenance
- Habitat and Prey Selection of Predators
- Tracks, Signs and Spoor
- Community Development



# BONAMANZI GAME RESERVE

AFRICA

## Use of Telemetry Tracking



ANY QUESTIONS?

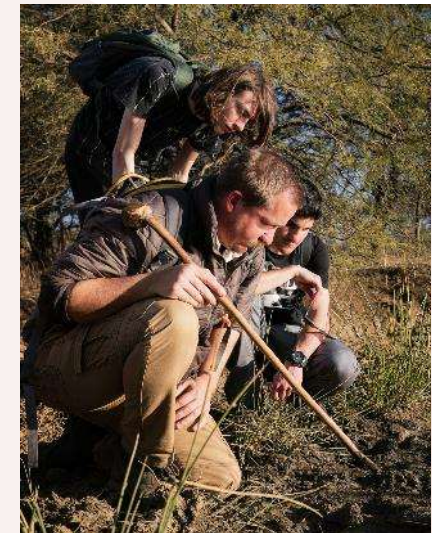
[INFO@GAPAFRICAPROJECTS.COM](mailto:INFO@GAPAFRICAPROJECTS.COM) | +44 (0)207 1937819

INFORMATION PACK 21

# BONAMANZI GAME RESERVE

AFRICA

## Ecology Trails: Tracks, signs and spoors



ANY QUESTIONS?

[INFO@GAPAFRICAPROJECTS.COM](mailto:INFO@GAPAFRICAPROJECTS.COM) | +44 (0)207 1937819

INFORMATION PACK 22

# BONAMANZI GAME RESERVE

AFRICA

## Rhino Monitoring – Awareness and Anti-Poaching



ANY QUESTIONS?

[INFO@GAPAFRICAPROJECTS.COM](mailto:INFO@GAPAFRICAPROJECTS.COM) | +44 (0)207 1937819

INFORMATION PACK 23

## Camera Trap – Research and Study

Set out own camera traps

Learn about the correct placement of cameras, best location etc.

Never know what we'll find!



# BONAMANZI GAME RESERVE

AFRICA

## Night Game Drives



# BONAMANZI GAME RESERVE

AFRICA

## Bird Ringing



ANY QUESTIONS?

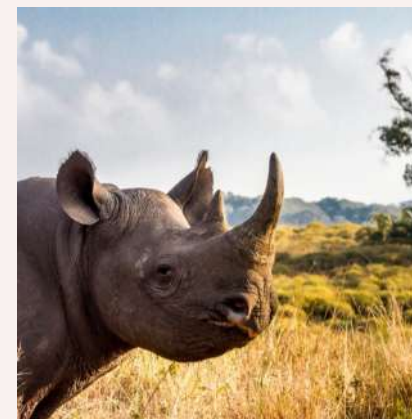
[INFO@GAPAFRICAPROJECTS.COM](mailto:INFO@GAPAFRICAPROJECTS.COM) | +44 (0)207 1937819

INFORMATION PACK 26

## Hluhluwe-Imfolozi Park

Hluhluwe iMfolozi Park - is the oldest proclaimed nature reserve in Africa. It consists of 96,000 ha of wilderness and has the Big 5 as well as cheetah, hyena, African wild dog among many other mammals, reptiles and birds.

Students will have an inciteful game drive in open game viewers.



# BONAMANZI GAME RESERVE

AFRICA

## Community Projects & Zulu Culture

Learn about traditional Zulu culture

Community engagement essential for long-term conservation

Positive impact supporting not-for-profit initiatives

Projects: Move Africa, Project Rhino



# ABOUT THE PROJECT

AFRICA

## Community – GAP Donation Bags



ANY QUESTIONS?

[INFO@GAPAFRICAPROJECTS.COM](mailto:INFO@GAPAFRICAPROJECTS.COM) | +44 (0)207 1937819

INFORMATION PACK 29



**AFRICA**

# **ONLINE NATURE GUIDE COURSE**

Bushwise

# ONLINE NATURE GUIDE COURSE

AFRICA

## Exclusive Bushwise Nature Guide Course

Bushwise is a leading nature guide training provider, and we've partnered with them to offer an exclusive 6-week 'Explore Nature' online course – giving you a real-life insight into the training of a South African Nature Guide.

Connect with the South African bush before you even travel!



Modules include Introduction, Geology, Weather & climate, Astronomy, Ecology, Biomes, Taxonomy, Plants, Arthropods, Fish, Amphibians, Reptiles, Birds, Mammals, Ethology, Conservation management, Historical human habitation.

Your wildlife journey starts here! Build a strong foundation in field guiding, wildlife, and ecology, so that you're fully prepared for the hands-on experience in South Africa.

### Course Start Dates:

5 January 2026

30 March 2026

22 June 2026

14 September 2026





**AFRICA**

# **WEEKEND EXCURSIONS**

Your free time on the project

# WEEKEND ACTIVITIES & EXCURSIONS

AFRICA

## Activities/Excursions (own cost and optional)

There will be free time/days off, where you'll be able to do some additional activities at your own cost. These are optional.

Whalewatching will be booked and paid for by cash in St Lucia.

More information will be given closer to the time. N.B Your travel insurance **must** cover you for any additional activities you choose to do.

**Any activities booked and paid for locally are not covered under GAPAfrica Project's personal liability insurance.**





**AFRICA**

# **ACCOMMODATION & LIFESTYLE**

Life in the African Bush

# ACCOMMODATION

AFRICA

## St Lucia Coastal Accommodation

Guest House style accommodation is provided during your time in St Lucia. Rooms are shared and have communal ablutions.

The guest house is located in the heart of St Lucia's Main Street and is the ideal location to explore the surrounding areas.



# ACCOMMODATION

AFRICA

## St Lucia Coastal Accommodation



ANY QUESTIONS?

[INFO@GAPAFRICAPROJECTS.COM](mailto:INFO@GAPAFRICAPROJECTS.COM) | +44 (0)207 1937819

INFORMATION PACK 36

# ACCOMMODATION

AFRICA

## Bundu Camp - Bonamanzi

Chalet style accommodation is provided during your time in Bonamanzi Game Reserve. Twin roomed chalets are shared and have communal ablutions with the adjoining chalet.

All guests will eat together in the communal dining room or outside in the covered dining area.



# ACCOMMODATION

AFRICA

## Bundu Camp - Bonamanzi



ANY QUESTIONS?

[INFO@GAPAFRICAPROJECTS.COM](mailto:INFO@GAPAFRICAPROJECTS.COM) | +44 (0)207 1937819

INFORMATION PACK 38

# ACCOMMODATION

AFRICA

## Food at the project

Three meals are provided a day prepared by the kitchen staff.

Breakfasts will consist of toast and cereals; lunch may include pasta, wraps, burgers, stir fry; dinners include meat, fish and vegetables with rice, potatoes or pasta.

On weekends a braai (BBQ) is often organised.

Please advise us of any dietary requirements in advance so we can ensure that you are adequately catered for.





**AFRICA**

# **BOOKING YOUR ADVENTURE**

The next steps to the trip of a  
lifetime!

# WHY SHOULD I TRAVEL?

AFRICA

## What do previous travellers say about the KwaZulu-Natal Wildlife and Community Project?



"Everything **exceeded** my expectations, and the trip was **life-changing**."



"The staff were **amazing**, we got the **opportunity** to take part in talks and anti-poaching bush walks."



"I got to observe animals **up close**, which really **developed** my **knowledge** of animal behaviours"

Reference: GAP Africa Projects Post Project Trip Questionnaire 23/24

# WHY SHOULD I TRAVEL?

AFRICA

## What do previous travellers say about the KwaZulu-Natal Wildlife and Community Project?



"It was the most **amazing** experience I've ever had."



"I learnt so many new things that have **educated** me **beyond** the classroom."



"There wasn't a single experience that didn't **amaze** me and make me feel **enriched**."

Reference: GAP Africa Projects Post Project Trip Questionnaire 23/24

# THE NEXT STEPS

AFRICA



## Project dates & key deadlines

### Confirmed travel dates:

Depart UK: 21 June 2026 | Arrive SA: 22 June 2026

Depart SA: 04 July 2026 | Arrive UK: 05 July 2026

### Trip cost:

£2,795.00\* Based on a group of 10 (confirmed once flights have been held)

### Key deadlines are:

- Return online booking form by 26/09/2025
- Deposit payment, £300.00 by 13/10/2025
- 50% instalment payment of £1247.50 to be paid by 02/03/2026
- Balance payment of £1247.50 to be paid by 27/04/2026
- 08/06/2026 e-Tickets & final documents will be issued

# WHAT'S INCLUDED

AFRICA

## What is included?

- Flights
- Transfers to/from project
- Accommodation
- Three meals per day
- All activities as part of the project
- Airport meet/greet
- 24/7 In country support

## NOT Included

- Personal Travel Insurance \*
- Meals on travel days – before arriving & after departing from project
- Any activities not specified as part of the project
- Visas/travel documents
- Tips

\* Provided by the college – please confirm with your college the details of the insurance provided.



# BOOKING YOUR ADVENTURE

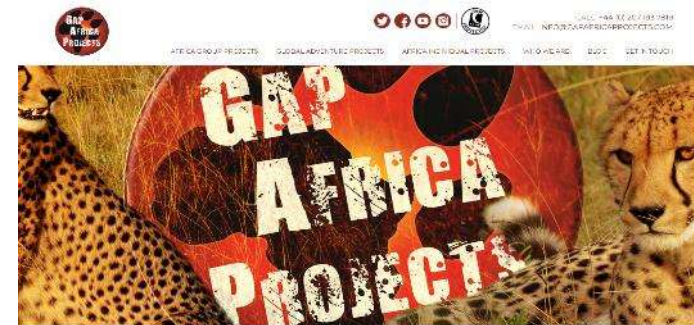
AFRICA

## Booking Form

- Please submit by 26/09/2025
- No deposit required at this stage of booking
- Passport fields not mandatory

## Key deadlines are:

- Deposit of £300 to confirm placement
- Instalment payment of 50% due 16 weeks before departure
- Balance payment due 8 weeks before departure



### BOOKING FORM

(NB) Your name should be given as displayed on your passport

Title \*

Name \*

Date of birth \*

Address \*

Telephone \*

Mobils \*

Email 1 \*

Email 2 \*

(\*\*NB Please note that all booking correspondence will be sent via Email\*\*)

Passport no.

Passport Issue Date

# THE NEXT STEPS

AFRICA

## Confirmation Documents

Confirmation documents will be issued and sent directly to you via email.

Please communicate with us with any questions relating to the field trip.

**Dear Chloe,**

Thank you for agreeing to book with Gap Africa Projects as part of the 6x hotel Chicago trip to Zulu and Conservation Research. Please take the time to look through this document and check that everything is correct.

We have received your deposit payment and your payment is now confirmed as per the details below. The final balance and due date is detailed on your invoice.

Please remember that you can contact me to discuss anything in this document as well as any other aspect of your experience and I am so glad to be your personal travel advisor for the rest of your placement.

Warm regards,  
The GAP Africa Team

**Passengers Travelling**  
Miss Chloe  
Placement(s)  
Zulu Land Conservation Research [06/03/23 - 18/03/23]

**Inclusions**  
Flights, shared road transfers to and from Project, accommodation for duration, all meals and all project activities.

**Exclusions**  
Insurance: any activities undertaken that are not included in part of the project.

**Your Flight(s)**

Flight	Class	Time	From	To
05/03/2023	D	15:00	Manchester (MAN)	
06/12/23	A	10:00	London Heathrow (LHR)	
05/03/2023	D	18:20	London Heathrow (LHR)	
06/03	A	07:25 + 1 D	Johannesburg (JNB)	
18/03/2023	D	20:15	Johannesburg (JNB)	
06/03	A	10:50 + 1 D	London Heathrow (LHR)	
19/03/2023	D	09:35	London Heathrow (LHR)	
06/13/20	A	19:40	Manchester (MAN)	

**Your Booking**  
Travel Advice  
Names and spellings  
Passport expiry date  
Passport Copies  
Travel insurance

**mark.booth@gap-africa-projects.com**  
+44 (0) 207 193 7819

**CONFIRMATION INVOICE**

Miss Chloe  
Zulu Land Conservation Research  
10 Oct 2022

Flight	Class	Time	From	To	Fare	Tax	Total
05/03/2023	D	15:00	Manchester (MAN)		150.00	10.00	160.00
06/12/23	A	10:00	London Heathrow (LHR)		200.00	15.00	215.00
05/03/2023	D	18:20	London Heathrow (LHR)		150.00	10.00	160.00
06/03	A	07:25 + 1 D	Johannesburg (JNB)		300.00	20.00	320.00
18/03/2023	D	20:15	Johannesburg (JNB)		200.00	15.00	215.00
06/03	A	10:50 + 1 D	London Heathrow (LHR)		200.00	15.00	215.00
19/03/2023	D	09:35	London Heathrow (LHR)		150.00	10.00	160.00
06/13/20	A	19:40	Manchester (MAN)		150.00	10.00	160.00
<b>Total</b>					<b>1500.00</b>	<b>100.00</b>	<b>1600.00</b>

**ATOL Certificate**  
ATOL Number: 10890

**ATOL Certificate**

This confirms that your money is protected by the ATOL scheme and that you can get home if your travel company collapses.

This certificate sets out how the ATOL scheme will protect the people named on it for the parts of their trip listed below.

**Who is protected?** Number of passengers: 10

**What is protected?**

You can find more detailed information on your booking, including prices, on the confirmation you will receive from Gap Africa Projects Limited.

**Who is protecting your trip?**  
Gap Africa Projects Limited ATOL Number 10890

**Your protection**  
You are protected from when you were given this certificate to the end of your trip. If Gap Africa Projects Limited stops trading, the passengers named above will either:

- complete their trip and return to the UK, or
- receive a refund.

Your protection depends on the terms of the ATOL scheme (available at [www.atol.org.uk](http://www.atol.org.uk)).

If Gap Africa Projects Limited stops trading, you must follow the instructions at [www.atol.org.uk](http://www.atol.org.uk) (where there will be details of arrangements to bring people back to the UK, and information on how people can claim their money back) or you can call (444) 20 7463 6360.

Unique reference number	Date of issue	ATOL Certificate issuer	ATOL number	Package sale
4413	19/10/2022	Gap Africa Projects Ltd	10890	

[Click here to view all available flights](#)

# BOOKING YOUR ADVENTURE

AFRICA

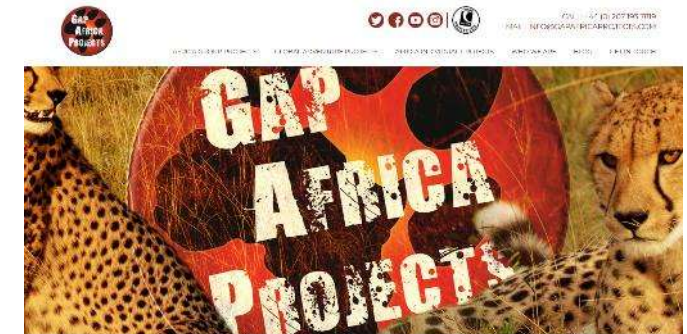
## Group Web Page

<https://gapafricaprojects.com/26-4780/>



## Booking Form

<https://gapafricaprojects.com/booking-form-26-4780-dro-kwc-duchy-college-rosewarne/>



### BOOKING FORM

Your Globe Adventure Starts Here!

Please use the form below to submit your provisional booking to your selected project. You have the option to pay your initial deposit with the submission of your booking form, or we will contact you for payment once your project placement has been secured.

If you'd like to contact us to ask any initial questions or find out more about what project you'd like to go on and when, you can do so by getting in touch using our short enquiry form, or by calling +44 (0) 207 193 7819.

(NB: Your name should be given as displayed on your passport)

Title \*

Name \*

Date of birth \*

Address \*

Telephone (Do not enter +44 for UK numbers) \*

Mobile (Do not enter +44 for UK numbers) \*

Email 1 \*

Email 2 \*

(NB: Please note that all booking correspondence will be sent via Email)

Passport No.

## Sustainability & Social, Economic Responsibility

**Local employment from rural communities** – our project partners employ a high percentage of staff from local communities. They advocate training to advance careers in hospitality, wildlife and conservation.

**Low environmental impact camps** – our project bush camps are built with minimal impact on the environment. Resources from the surrounding area are utilised for buildings, water is (where possible) pumped from local river sources and green energy supplies, such as solar are championed.

**Community donations and support** – we encourage all our international study groups to be proactive in donation collections and arrange for excess baggage for said donations to be taken out to South Africa in support of the local communities.

**Move Africa, supporting young females** – 3 in 10 girls in South Africa miss a week of school every month because they cannot afford basic sanitary products. Our project partners work with Move Africa alongside their partner NGOs, to distribute menstrual cups to the local communities and provide education workshops.

**Rhino Art** – Project rhino realises the enormous responsibility the youth have to ensure our wildlife is protected for many generations to come. They ensure they can reach and educate as many kids as possible through Rhino Art, using art workshops to teach about conservation. This initiative is supported by our local project partners.

**Food/crop education** – our project partners encourage food and crop education to rural communities, where cost of living to low income families and distance travelled to obtain basic resources can prove problematic. Projects include community allotments and providing education on best practice for crop rotations, harvest seasons and nutrition.

**Recycling workshops** – Litter, and in particular plastics, is a major issue and threat to the ecosystem in Southern Africa. Rural communities have limited waste removal available and it is therefore a problem escalating at an alarming rate. Recycling workshops are provided through local schools to help educate children on the importance of correctly disposing of litter and recycling plastics.



**GLOBAL** reach. **ADVENTURE** for all. **PROJECTS** to inspire.

Explore our network of Global Adventure Projects:



[GLOBALADVENTUREPROJECTS.COM](http://GLOBALADVENTUREPROJECTS.COM)

