



SOUTH STAFFORDSHIRE COLLEGE PROJECT PRESENTATION

Waterberg Wildlife & Veterinary Course Entabeni (Vet Nurses)



AFRICA

GLOBAL reach. **ADVENTURE** for all. **PROJECTS** to inspire.

ABOUT US:

AFRICA

GAP Africa Projects

- We are a specialised travel company that offers academic trips and volunteering opportunities for groups and individual travellers, in a number of locations worldwide
- We pride ourselves on curating experiences which are personalised to your needs and requirements
- Our first project travelled in 2012
- Full ATOL Bonding
- Working with over 55 Colleges and Universities around the UK
- A small dedicated team in the UK and South Africa





AFRICA

ABOUT THE WATERBERG

Project overview and
location

Your Conservation Field Trip Explained

- A unique conservation experience based in South Africa
- Live in a research camp on a wild African game reserve
- 12 night programme specifically tailored for VN students
- Two project locations
- Learn about conservation management
- Project Activities include:
 - Pioneering Conservation Research
 - Conservation Activities
 - Veterinary interventions and activities
- Dedicated vehicles and conservation staff
- The most incredible wildlife experience you will ever have

ABOUT THE WATERBERG

AFRICA

Your two project locations

Your trip is split between two locations, in two neighbouring provinces of South Africa. You will first observe a focused wildlife veterinary practice on a reserve in the Waterberg, Limpopo Province (**Entabeni Safari Conservancy**) before travelling to Gauteng Province where you will have a tour of the Johannesburg Wildlife Vet – the only small animal practice in the country that only works on wildlife; assist with some shelter and community cases, learn about a K9 conservation unit and participate in lectures and debates. Project locations and duration are as follows:

Itinerary

4 Nights

Kyalami, Midrand and surrounding areas – Gauteng Province

8 Nights

Entabeni Safari Conservancy – Waterberg – Limpopo Province

ABOUT THE WATERBERG

AFRICA

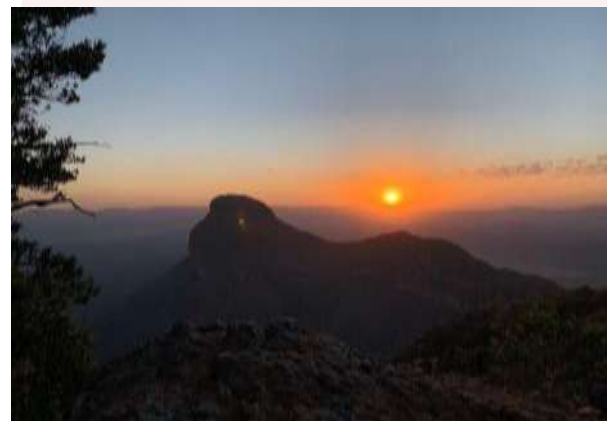
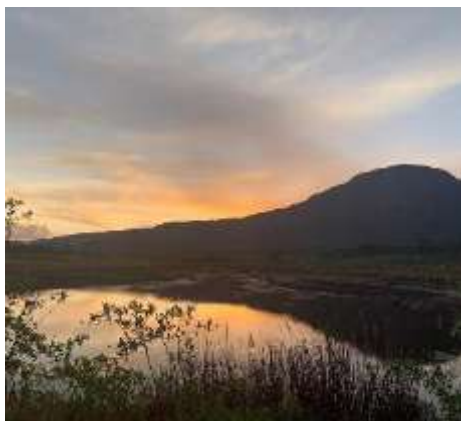
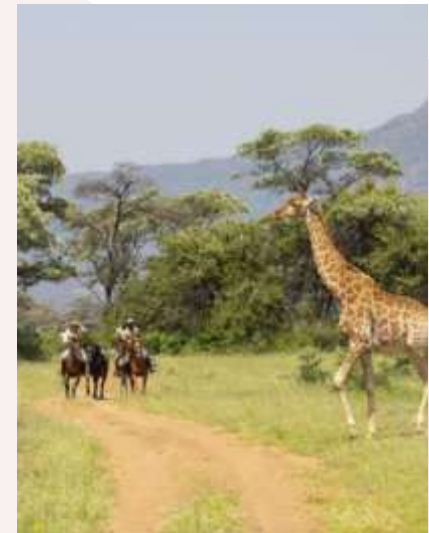
Entabeni Safari Conservancy – Location



ABOUT THE WATERBERG

AFRICA

Known for its dramatic landscape



ANY QUESTIONS?

INFO@GAPAFRICAPROJECTS.COM | +44 (0)207 1937819

Project Presentation 7

ABOUT THE WATERBERG

AFRICA

Home to the BIG 5



ANY QUESTIONS?

INFO@GAPAFRICAPROJECTS.COM | +44 (0)207 1937819

Project Presentation 8

ABOUT THE WATERBERG

AFRICA

Home to over 60 Species of Mammal



ANY QUESTIONS?

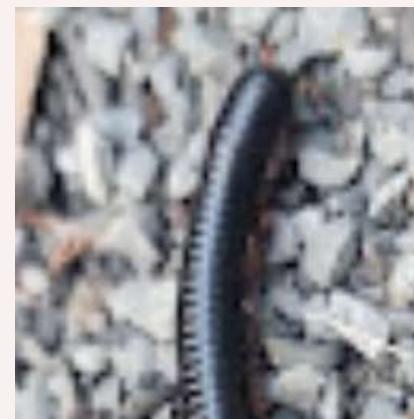
INFO@GAPAFRICAPROJECTS.COM | +44 (0)207 1937819

Project Presentation 9

ABOUT THE WATERBERG

AFRICA

Many Reptile, Insect and Bird Species



What is a Game Reserve?

- A game reserve is a large area of protected land where wild animals can live safely
- Wildlife is free roaming throughout the reserve allowing them to thrive in their natural habitat
- Reserves are either Government Owned (National Parks) or Privately Owned/Managed
- Most reserves will have physical boundaries i.e. electrified fence line
- Due to physical boundaries, wildlife must be managed due to restraints on population growth, migration and resources
- Wildlife is protected but also utilised as a tourist attraction (Eco Tourism) which creates funding for conservation efforts and research





AFRICA

ABOUT THE PROJECT: KYALAMI, MIDRAND AND SURROUNDING AREAS

Our conservation work
in more detail

ABOUT THE PROJECT

AFRICA

Kyalami, Midrand and surrounding areas – Gauteng (4 Nights)

- Introduction to Wildlife Veterinary work in the Context of African Wildlife (Dr Zoe Glyphis – Local Wildlife Vet)
- Visit to Johannesburg Wildlife Veterinary hospital.
- Assist with some animal shelter and community cases
- Assist with a K9 conservation unit.
- Dart shooting practice

It's important to remember that wildlife does not work to an agenda, therefore activities may change at short notice!



ABOUT THE PROJECT

AFRICA

Dr Zoe Glyphis – Wildlife Veterinarian – Predator Specialist

Dr Zoe Glyphis has become one of South Africa's leading predator specialists and is on the forefront with veterinary medicine and veterinary assistance of wild dog, hyena and cheetah conservation all over South Africa.

She is helping and assisting several NGO groups and organizations with their efforts to increase predator ranges and to establish safe and genetically viable populations in new conservation areas.



ABOUT THE PROJECT

AFRICA

Practical Sessions

- Dart shooting practice
- The kit and clinic of a mobile wildlife vet
- Q & A



Possible Lectures & Debate

- Drugs used in wildlife medicine
- Calculating doses in wildlife
- Logistics of wildlife transportation: customised vehicles, crates and equipment
- The Game Trade-Auction and value of livestock
- Game capture systems
- Darting wildlife
- Boma management and rehabilitation
- Orphaned Rhino rehabilitation
- Parasite control
- Managing game reserves and Land Capacity Model
- Species control - predator pits
- State veterinary disease control in practice
- Documentation required: Red Cross Permits



Kyalami – Johannesburg Wildlife Vet

Johannesburg Wildlife Vet is a registered wildlife veterinary hospital and a rehabilitation centre that rescues, rehabilitates and releases indigenous wildlife in South Africa.

Specialising in treating sick, injured and orphaned animals, this non-profit company provides expert care while promoting conservation through education and research.

Johannesburg Wildlife Vet exclusively treats, rehabilitates, releases and protects small to medium indigenous wildlife, free of charge. The species treated range from the most common to the highly endangered and include all mammals, birds, amphibians, reptiles and even arachnids.

It is lead by Dr Karin Lourens who has been a practicing veterinarian for 22 years with a specific interest in wildlife veterinary medicine and wildlife rehabilitation of South African species.

Watch this [NETFLIX documentary](#), about a baby pangolin embarking on a journey back to the wild, featuring Johannesburg Wildlife Veterinary Hospital.



ABOUT THE PROJECT

AFRICA

Kyalami – Society for Animals in Distress

Vet care is provided by Vets, Vet Nurses, Animal Health Technicians and Animal Welfare Assistants.

The organisation's focus is to provide access to veterinary care for all, to serve vulnerable communities and animal care organisations.

Students will assist professional Masterton method practitioner and veterinarians at the rescue centre with horses, dogs, cats and other small animals.

The animals have been rescued from impoverished circumstances and are rehabilitated to be rehomed.



ANY QUESTIONS?

INFO@GAPAFRICAPROJECTS.COM | +44 (0)207 1937819

Project Presentation 18

Kyalami –Pit-Track K9 antipoaching unit

Pit-Track is a registered NPC Non-Profit Company specialising in K9 Conservation and Anti-Poaching, made up of highly skilled, and dedicated operators,, who have devoted their lives to the protection of wildlife.

Pit-Track has operated extensively on anti-poaching operations and has continued to remain in the field on the frontline of the war against poaching.

Students will meet the K9 antipoaching team. A talk about the poaching crisis will be delivered as well as a K9 demo. Students then have the opportunity to assist these working dogs with any physio needs.





AFRICA

ABOUT THE PROJECT: ENTABENI SAFARI CONSERVANCY

Our conservation work
in more detail

ABOUT ENTABENI

AFRICA

Entabeni Safari Conservancy - Location

- South Africa a world leader in conservation
- Malaria free Waterberg Plateau



ABOUT ENTABENI

AFRICA

Entabeni Safari Conservancy

- 22 000 Hectare Privately Managed Game Reserve
- Forming part of the Waterberg Biosphere (662 059 ha)
- Work alongside the conservation team including:
 - Wildlife Vets
 - Conservation Researchers
 - Ecologists
 - Anti Poaching Unit
- Located in a Malaria free zone
- Proclaimed Protected Conservation Area
- Savannah Eco System
- Student Camp Accommodation



ABOUT THE PROJECT

AFRICA

Entabeni Safari Conservancy (8 Nights)

- Introduction to Entabeni Safari Conservancy and Research Projects
- Rhino orphanage – assist with orphaned rhino calves
- Time spent with the research team conducting conservation activities
- Wildlife Veterinary work and intervention (Dr Pierre Bester)
- Build up to possible intervention and planning
- Lectures

It's important to remember that wildlife does not work to an agenda, therefore activities may change at short notice!



ABOUT THE PROJECT

AFRICA

Dr Pierre Bester – Wildlife Veterinarian – Rhino Expert

He has a mixed animal practice (small and large domestic as well as wild) where the scope of his work includes the immobilisation, treatment, and translocation of African wildlife; specialising in rhino.

He's been involved with the immobilisation and translocation of thousands of rhinos, as well as countless other species.



ABOUT THE PROJECT

AFRICA

Learning about a Veterinarians role in the field



ANY QUESTIONS?

INFO@GAPAFRICAPROJECTS.COM | +44 (0)207 1937819

Project Presentation 25

Monitoring the Entabeni Rhino Population

Behavioural observations, photos and GPS locations are recorded to document where the animals are occurring; keeping tabs on the localities and activities of White and Black Rhino on the reserve.

Importantly also monitor body condition, injuries, mating, calving, behaviour, herd structure etc.



ABOUT THE PROJECT

AFRICA

The Rhino Orphanage

The Rhino Orphanage was the first-ever specialised, non-commercial centre dedicated to the rescue, rehabilitation, raising and release of orphaned rhinos back into the wild.

Although new-born rhinos can weigh up to 50kgs, they are essentially “helpless” and require protection so that they may survive and ultimately thrive.



ABOUT THE PROJECT

AFRICA

Introduction to Pharmacology



ANY QUESTIONS?

INFO@GAPAFRICAPROJECTS.COM | +44 (0)207 1937819

Project Presentation 28

ABOUT THE PROJECT

AFRICA

Research – Habitat and Prey Selection: Predators



ANY QUESTIONS?

INFO@GAPAFRICAPROJECTS.COM | +44 (0)207 1937819

Project Presentation 29

ABOUT THE PROJECT

AFRICA

Research – Elephant Monitoring & Fertility Study



ANY QUESTIONS?

INFO@GAPAFRICAPROJECTS.COM | +44 (0)207 1937819

Project Presentation 30

ABOUT THE PROJECT

AFRICA

Monitoring Herbivore Condition and Health



ANY QUESTIONS?

INFO@GAPAFRICAPROJECTS.COM | +44 (0)207 1937819

Project Presentation 31

ABOUT THE PROJECT

AFRICA

Camera Trap – Research and Study



ANY QUESTIONS?

INFO@GAPAFRICAPROJECTS.COM | +44 (0)207 1937819

Project Presentation 32

ABOUT THE PROJECT

AFRICA

Anti-Poaching Unit



ANY QUESTIONS?

INFO@GAPAFRICAPROJECTS.COM | +44 (0)207 1937819

Project Presentation 33

ABOUT THE PROJECT

AFRICA

Night Game Drives



ANY QUESTIONS?

INFO@GAPAFRICAPROJECTS.COM | +44 (0)207 1937819

Project Presentation 34

ABOUT THE PROJECT

AFRICA

Rhino – Fitting of Prosthetics



ABOUT THE PROJECT

AFRICA

Rhino – Sinus Infection



ANY QUESTIONS?

INFO@GAPAFRICAPROJECTS.COM | +44 (0)207 1937819

Project Presentation 36

ABOUT THE PROJECT

AFRICA

Lion immobilisation & collaring/removal



ANY QUESTIONS?

INFO@GAPAFRICAPROJECTS.COM | +44 (0)207 1937819

Project Presentation 37

ABOUT THE PROJECT

AFRICA

Cheetah Relocation – Endangered Wildlife Trust (EWT)



ANY QUESTIONS?

INFO@GAPAFRICAPROJECTS.COM | +44 (0)207 1937819

Project Presentation 38

ABOUT THE PROJECT

AFRICA

Free-roaming Waterberg Wild Dog – Talks



ANY QUESTIONS?

INFO@GAPAFRICAPROJECTS.COM | +44 (0)207 1937819

Project Presentation 39

ABOUT THE PROJECT

AFRICA

Community – GAP Donation Bags



ANY QUESTIONS?

INFO@GAPAFRICAPROJECTS.COM | +44 (0)207 1937819

Project Presentation 40



AFRICA

WEEKEND EXCURSIONS

Your free time on the project

WEEKEND ACTIVITIES & EXCURSIONS

AFRICA

Activities/Excursions (own cost and optional)

There will be free time/days off, where you'll be able to do some additional activities at your **own cost**. These are **optional**.

All activities are booked and paid for (**cash** or, sometimes, **card**) at the project.

More information will be given closer to the time. N.B Your travel insurance **must** cover you for any additional activities you choose to do.

Any activities booked and paid for locally are not covered under GAPAfrica Project's personal liability insurance.





AFRICA

ACCOMODATION & LIFESTYLE

Living in the African Bush

Gauteng – Phahama Game Lodge

You will be staying in accommodation with 2 or 4 beds with en-suite facilities.

There are outdoor seating areas and a garden with swimming pool.

The lodge offers comfortable areas to relax and unwind, it has WiFi and is ideally located for the various project locations in and around Gauteng.



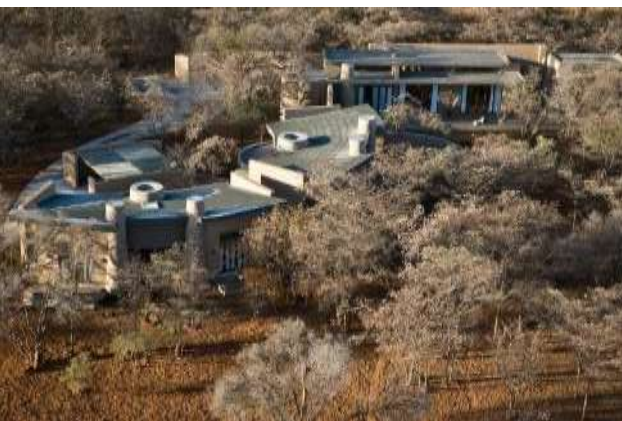
ACCOMMODATION & LIFESTYLE

AFRICA

Waterberg – Entabeni Accommodation

You will stay in twin bedded rooms with ensuite facilities.

There are 4, 5 and 6 bedroom units each of which has an open plan layout with lounge and dining area and a fully equipped kitchen.



Food at the Project

At Entabeni all meals are included. The students will self prepare meals as a group in one of the kitchens.

Some days lunch will be at the accommodation; other days lunch will be brought into the field to be taken as a picnic.

All meals will be provided at Phahama Lodge. A packed lunch will be provided if the group are not returning to the accommodation at lunch time.

Dietary Requirements

Provision can be made for Vegetarian & Vegan diets and for those who have a medical condition such as Coeliac disease that requires a Gluten Free Diet and for those with severe allergies to dairy, eggs or nuts.



ACCOMMODATION & LIFESTYLE

AFRICA

Life on a Reserve



ANY QUESTIONS?

INFO@GAPAFRICAPROJECTS.COM | +44 (0)207 1937819

Project Presentation 47



AFRICA

BOOKING YOUR ADVENTURE

The next steps to the trip of a
lifetime!

WHY SHOULD I TRAVEL?

AFRICA

What do previous travellers say about the Waterberg Wildlife and Veterinary Course – Entabeni?



“Staying at Entabeni really developed my knowledge of animal behaviours.”



“Everything exceeded my expectations, and the trip was life-changing.”



We got the opportunity to take part in talks and visit the Rhino orphanage, it was incredible.”

Reference: GAP Africa Projects Post Project Trip Questionnaire 23/24

WHY SHOULD I TRAVEL?

AFRICA

What do previous travellers say about the Waterberg Wildlife and Veterinary Course – Entabeni?



“Assisting in the field was a phenomenal experience.”



“I have returned home feeling more confident about my practical skills, it was brilliant.”



We got the opportunity to take part in practicals and interventions too, it was incredible.”

Reference: GAP Africa Projects Post Project Trip Questionnaire 23/24

WHAT'S INCLUDED

AFRICA

What is Included?

- Flights
- Transfers to/from project
- Accommodation
- Three meals per day
- All activities as part of the project
- ATOL protection
- Airport meet/greet
- 24/7 In country support



NOT Included

- Personal Travel Insurance*
- Meals on travel days – before arriving & after departing from project
- Any activities not specified as part of the project
- Weekend activities
- Visas/travel documents
- Tips

* We recommend you take out insurance as soon as your booking is confirmed

THE NEXT STEPS

AFRICA



Project dates & key deadlines

Confirmed travel dates:

Depart UK: 24th May 2026 | Arrive SA: 25th March 2026

Depart SA: 6th June 2026 | Arrive UK: 7th June 2026

Trip cost:

£2995.00* Based on a group of 12 (confirmed once flights have been held)

Key deadlines are:

- Return online booking form by 23/05/2025
- Deposit payment, £300.00 by 24/06/2025
- 50% instalment payment of £1347.50 to be paid by 02/02/2025
- Balance payment of £1347.50 to be paid by 30/03/2026
- 11/05/2026 e-Tickets & final documents will be issued

BOOKING YOUR ADVENTURE

AFRICA

Booking Form

- Please submit by **23/05/2025**
- No deposit required at this stage of booking
- Passport fields not mandatory

Key deadlines are:

- Deposit of £300 to confirm placement
- Instalment payment of 50% due 16 weeks before departure
- Balance payment due 8 weeks before departure

GAP Africa Projects

AFRICA PROJECTS | SOCIAL MEDIA | AFRICA PROJECTS | WHO WE ARE | BOOK | GET IN TOUCH

0207 1937819 | INFO@GAPAFRICAPROJECTS.COM

BOOKING FORM

(NB: Your name should be given as displayed on your passport)

Title *

Name *

Date of birth *

Address *

Telephone *

Mobile *

Email 1 *

Email 2 *

(NB: Please note that all booking correspondence will be sent via Email)

Passport no.

Passport Issue Date

THE NEXT STEPS

AFRICA

Confirmation Documents

Confirmation documents will be issued and sent directly to you via email.

Please communicate with us with any questions relating to the field trip.



Dear Chloe,

Thank you for agreeing to book with Gap Africa Projects as part of the 6x hotel Chicago trip to Zulu and Conservation Research. Please take the time to look through this document and check that everything is correct.

We have received your deposit payment and your payment is now confirmed upon the details below. The final balance and due date is detailed on your invoice.

Please remember that you can contact me to discuss anything in this document as well as any other aspect of your reservation and I am so glad to be your personal travel advisor for the entirety of your placement.

Warm regards,
The GAP Africa Team

Passengers Travelling
Miss Chloe
Placement(s)
Zulu Land Conservation Research (04/03/23 - 18/03/23)

Inclusions
Flights, shared road transfers to and from Project, accommodation for duration, all meals and all project activities.

Exclusions
Insurance: any activities undertaken that are not included as part of the project.

Your Flight(s)

Flight	Class	Time	From	To
04/03/2023	D	15:00	Manchester (MAN)	London Heathrow (LHR)
04/12/2023	A	10:00	London Heathrow (LHR)	London Heathrow (LHR)
05/03/2023	D	18:20	London Heathrow (LHR)	London Heathrow (LHR)
04/03/2023	A	07:25 + 1 D	London Heathrow (LHR)	London Heathrow (LHR)
18/03/2023	D	08:15	London Heathrow (LHR)	London Heathrow (LHR)
18/03/2023	A	10:50 + 1 D	London Heathrow (LHR)	London Heathrow (LHR)
19/03/2023	D	09:15	London Heathrow (LHR)	London Heathrow (LHR)
04/13/2023	A	19:40	Manchester (MAN)	London Heathrow (LHR)

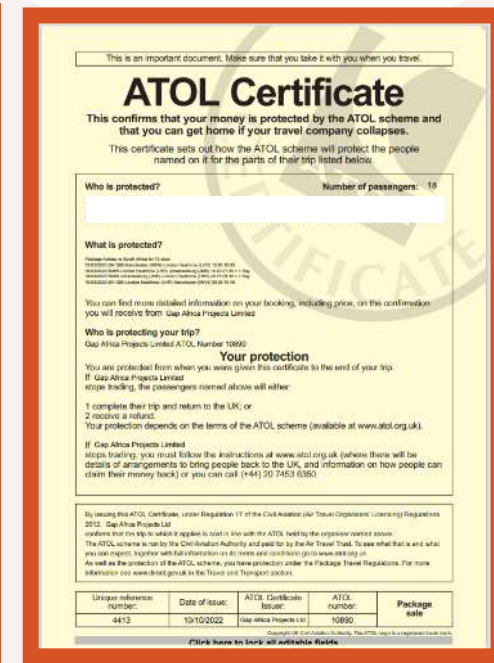
Your Booking
Travel Advice
Names and spellings
Passport expiry date
Passport Copies
Travel Insurance

mark.booth@gap-africa.com
+44 (0) 207 193 7819



CONFIRMATION INVOICE

Gap Africa Projects
100, 101, 102, 103, 104, 105, 106, 107, 108, 109, 110, 111, 112, 113, 114, 115, 116, 117, 118, 119, 120, 121, 122, 123, 124, 125, 126, 127, 128, 129, 130, 131, 132, 133, 134, 135, 136, 137, 138, 139, 140, 141, 142, 143, 144, 145, 146, 147, 148, 149, 150, 151, 152, 153, 154, 155, 156, 157, 158, 159, 160, 161, 162, 163, 164, 165, 166, 167, 168, 169, 170, 171, 172, 173, 174, 175, 176, 177, 178, 179, 180, 181, 182, 183, 184, 185, 186, 187, 188, 189, 190, 191, 192, 193, 194, 195, 196, 197, 198, 199, 200, 201, 202, 203, 204, 205, 206, 207, 208, 209, 210, 211, 212, 213, 214, 215, 216, 217, 218, 219, 220, 221, 222, 223, 224, 225, 226, 227, 228, 229, 230, 231, 232, 233, 234, 235, 236, 237, 238, 239, 240, 241, 242, 243, 244, 245, 246, 247, 248, 249, 250, 251, 252, 253, 254, 255, 256, 257, 258, 259, 260, 261, 262, 263, 264, 265, 266, 267, 268, 269, 270, 271, 272, 273, 274, 275, 276, 277, 278, 279, 280, 281, 282, 283, 284, 285, 286, 287, 288, 289, 290, 291, 292, 293, 294, 295, 296, 297, 298, 299, 300, 301, 302, 303, 304, 305, 306, 307, 308, 309, 310, 311, 312, 313, 314, 315, 316, 317, 318, 319, 320, 321, 322, 323, 324, 325, 326, 327, 328, 329, 330, 331, 332, 333, 334, 335, 336, 337, 338, 339, 340, 341, 342, 343, 344, 345, 346, 347, 348, 349, 350, 351, 352, 353, 354, 355, 356, 357, 358, 359, 360, 361, 362, 363, 364, 365, 366, 367, 368, 369, 370, 371, 372, 373, 374, 375, 376, 377, 378, 379, 380, 381, 382, 383, 384, 385, 386, 387, 388, 389, 390, 391, 392, 393, 394, 395, 396, 397, 398, 399, 400, 401, 402, 403, 404, 405, 406, 407, 408, 409, 410, 411, 412, 413, 414, 415, 416, 417, 418, 419, 420, 421, 422, 423, 424, 425, 426, 427, 428, 429, 430, 431, 432, 433, 434, 435, 436, 437, 438, 439, 440, 441, 442, 443, 444, 445, 446, 447, 448, 449, 450, 451, 452, 453, 454, 455, 456, 457, 458, 459, 460, 461, 462, 463, 464, 465, 466, 467, 468, 469, 470, 471, 472, 473, 474, 475, 476, 477, 478, 479, 480, 481, 482, 483, 484, 485, 486, 487, 488, 489, 490, 491, 492, 493, 494, 495, 496, 497, 498, 499, 500, 501, 502, 503, 504, 505, 506, 507, 508, 509, 510, 511, 512, 513, 514, 515, 516, 517, 518, 519, 520, 521, 522, 523, 524, 525, 526, 527, 528, 529, 530, 531, 532, 533, 534, 535, 536, 537, 538, 539, 540, 541, 542, 543, 544, 545, 546, 547, 548, 549, 550, 551, 552, 553, 554, 555, 556, 557, 558, 559, 560, 561, 562, 563, 564, 565, 566, 567, 568, 569, 570, 571, 572, 573, 574, 575, 576, 577, 578, 579, 580, 581, 582, 583, 584, 585, 586, 587, 588, 589, 590, 591, 592, 593, 594, 595, 596, 597, 598, 599, 600, 601, 602, 603, 604, 605, 606, 607, 608, 609, 610, 611, 612, 613, 614, 615, 616, 617, 618, 619, 620, 621, 622, 623, 624, 625, 626, 627, 628, 629, 630, 631, 632, 633, 634, 635, 636, 637, 638, 639, 640, 641, 642, 643, 644, 645, 646, 647, 648, 649, 650, 651, 652, 653, 654, 655, 656, 657, 658, 659, 660, 661, 662, 663, 664, 665, 666, 667, 668, 669, 670, 671, 672, 673, 674, 675, 676, 677, 678, 679, 680, 681, 682, 683, 684, 685, 686, 687, 688, 689, 690, 691, 692, 693, 694, 695, 696, 697, 698, 699, 700, 701, 702, 703, 704, 705, 706, 707, 708, 709, 710, 711, 712, 713, 714, 715, 716, 717, 718, 719, 720, 721, 722, 723, 724, 725, 726, 727, 728, 729, 730, 731, 732, 733, 734, 735, 736, 737, 738, 739, 740, 741, 742, 743, 744, 745, 746, 747, 748, 749, 750, 751, 752, 753, 754, 755, 756, 757, 758, 759, 760, 761, 762, 763, 764, 765, 766, 767, 768, 769, 770, 771, 772, 773, 774, 775, 776, 777, 778, 779, 780, 781, 782, 783, 784, 785, 786, 787, 788, 789, 790, 791, 792, 793, 794, 795, 796, 797, 798, 799, 800, 801, 802, 803, 804, 805, 806, 807, 808, 809, 810, 811, 812, 813, 814, 815, 816, 817, 818, 819, 820, 821, 822, 823, 824, 825, 826, 827, 828, 829, 830, 831, 832, 833, 834, 835, 836, 837, 838, 839, 840, 841, 842, 843, 844, 845, 846, 847, 848, 849, 850, 851, 852, 853, 854, 855, 856, 857, 858, 859, 860, 861, 862, 863, 864, 865, 866, 867, 868, 869, 870, 871, 872, 873, 874, 875, 876, 877, 878, 879, 880, 881, 882, 883, 884, 885, 886, 887, 888, 889, 890, 891, 892, 893, 894, 895, 896, 897, 898, 899, 900, 901, 902, 903, 904, 905, 906, 907, 908, 909, 910, 911, 912, 913, 914, 915, 916, 917, 918, 919, 920, 921, 922, 923, 924, 925, 926, 927, 928, 929, 930, 931, 932, 933, 934, 935, 936, 937, 938, 939, 940, 941, 942, 943, 944, 945, 946, 947, 948, 949, 950, 951, 952, 953, 954, 955, 956, 957, 958, 959, 960, 961, 962, 963, 964, 965, 966, 967, 968, 969, 970, 971, 972, 973, 974, 975, 976, 977, 978, 979, 980, 981, 982, 983, 984, 985, 986, 987, 988, 989, 990, 991, 992, 993, 994, 995, 996, 997, 998, 999, 1000.



ATOL Certificate

This confirms that your money is protected by the ATOL scheme and that you can get home if your travel company collapses.

This certificate sets out how the ATOL scheme will protect the people named on it for the parts of their trip listed below.

Who is protected? Number of passengers: 10

What is protected?

Who is protecting your trip?
Gap Africa Projects Limited ATOL Number 10890

Your protection
You are protected from when you were given this certificate to the end of your trip.
If Gap Africa Projects Limited ceases trading, the passengers named above will either:
1 complete their trip and return to the UK, or
2 receive a refund.
Your protection depends on the terms of the ATOL scheme (available at www.atol.org.uk).

If Gap Africa Projects Limited ceases trading, you must follow the instructions at www.atol.org.uk (where there will be details of arrangements to bring people back to the UK, and information on how people can claim their money back) or you can call (444) 20 7463 6360.

Unique reference number	Date of issue	ATOL Certificate issuer	ATOL number	Package sale
4413	19/10/2022	Gap Africa Projects Ltd	10890	

[Click here to view all available flights](#)

BOOKING YOUR ADVENTURE

AFRICA

Group Web Page

<https://gapafricaprojects.com/26-4710/>



Booking Form

<https://gapafricaprojects.com/booking-form-26-4710-ssa-esc-south-staffordshire-college/>



BOOKING FORM

Your Global Adventure Starts here!

Please use the form below to submit your provisional booking to your selected project. You have the option to pay your initial deposit with the submission of your booking form, or we will contact you for payment once your project placement has been secured.

If you'd like to contact us to ask any initial questions or find out more about what project you'd like to go on and when, you can get also get in touch using our short enquiry form, or by calling +44 (0) 207 193 7819.

(NB: Your name should be given as displayed on your passport)

Title *

Name *

Date of birth *

Address *

Sustainability & Social, Economic Responsibility

Local employment from rural communities – our project partners employ a high percentage of staff from local communities. They advocate training to advance careers in hospitality, wildlife and conservation.

Low environmental impact camps – our project bush camps are built with minimal impact on the environment. Resources from the surrounding area are utilised for buildings, water is (where possible) pumped from local river sources and green energy supplies, such as solar are championed.

Community donations and support – we encourage all our international study groups to be proactive in donation collections and arrange for excess baggage for said donations to be taken out to South Africa in support of the local communities.

Move Africa, supporting young females – 3 in 10 girls in South Africa miss a week of school every month because they cannot afford basic sanitary products. Our project partners work with Move Africa alongside their partner NGOs, to distribute menstrual cups to the local communities and provide education workshops.

Rhino Art – Project rhino realises the enormous responsibility the youth have to ensure our wildlife is protected for many generations to come. They ensure they can reach and educate as many kids as possible through Rhino Art, using art workshops to teach about conservation. This initiative is supported by our local project partners.

Food/crop education – our project partners encourage food and crop education to rural communities, where cost of living to low income families and distance travelled to obtain basic resources can prove problematic. Projects include community allotments and providing education on best practice for crop rotations, harvest seasons and nutrition.

Recycling workshops – Litter, and in particular plastics, is a major issue and threat to the ecosystem in Southern Africa. Rural communities have limited waste removal available and it is therefore a problem escalating at an alarming rate. Recycling workshops are provided through local schools to help educate children on the importance of correctly disposing of litter and recycling plastics.



GLOBAL reach. **ADVENTURE** for all. **PROJECTS** to inspire.

Explore our network of Global Adventure Projects:



GLOBALADVENTUREPROJECTS.COM

