



SOUTH STAFFORDSHIRE COLLEGE PRE-DEPARTURE PACK



Waterberg Wildlife & Veterinary Course Entabeni (Vet Nurses)



GLOBAL reach. **ADVENTURE** for all. **PROJECTS** to inspire.

TRIP OVERVIEW

AFRICA

South Staffordshire College – Booking Reference 4710

Trip Dates:

24th May 2026 – 6th June 2026

Flights:

Flight No	Flight Date	Dept.	Dept. Time	Arr.	Arr. Time
VS449	24/05/2026	London Heathrow (LHR)	22:25	Johannesburg (JNB)	10:25 + 1 Day
VS450	06/06/2026	Johannesburg (JNB)	20:25	London Heathrow (LHR)	06:30 + 1 Day

*Always check the flight timings on your final documents

Baggage Allowance – 1 piece of checked baggage @ 23kgs & 1 piece of hand baggage @ 10kgs max dimensions 56x36x23 cms

Project:

Waterberg Wildlife & Veterinary Course – Entabeni



AFRICA

ABOUT THE PROJECT

The conservation work
in more detail

Arrival at Johannesburg International Airport (OR Tambo)

Upon arrival at Johannesburg International Airport you must clear passport control and collect your baggage from baggage reclaim before heading into the arrivals hall.

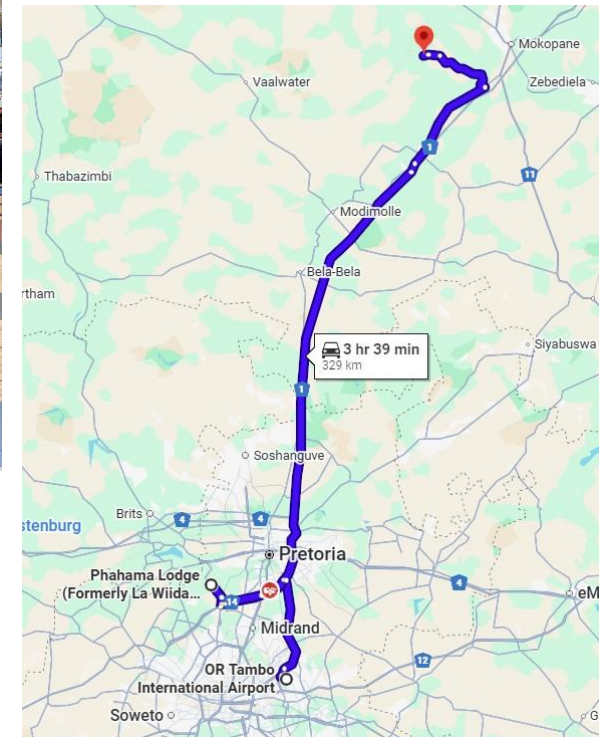
Either Carmen or Lesedi, the GAP Africa Projects representative, will meet you **next to the statue** as you come into the arrivals hall.

They will be there to assist you to your transport with Shuttle King who are transferring you to Kyalami, a drive of approximately 45 minutes.

The driver will stop at a shop on the way for you to get snacks, drinks etc.

If for any reason you are unable to locate the representative, please call Shuttle King:

Terri on : + 27 71 242 8838



CONTACT DETAILS

AFRICA

Address

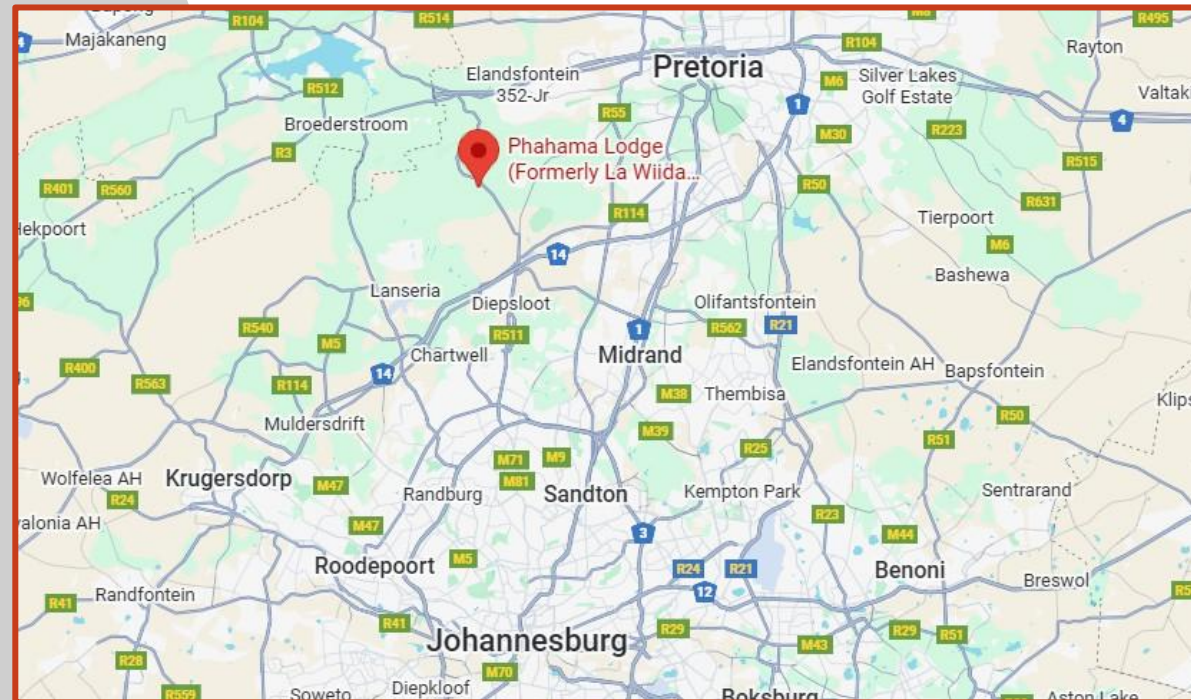
Phahama Game Lodge
Portion 183 of the Farm Hennops
R511
Hennopsriver Valley 0026
Gauteng
South Africa

Telephone

+27 (0) 74 587 4847

Gap Africa Projects

+27 (0) 79 313 2276 Carmen Warmenhove



CONTACT DETAILS

AFRICA



Address

Entabeni Safari Conservancy
Haakdoring Road
Mokopane
Limpopo 0600
South Africa

Telephone

+27 (0) 81 530 0144
+27 (0) 76 557 2564

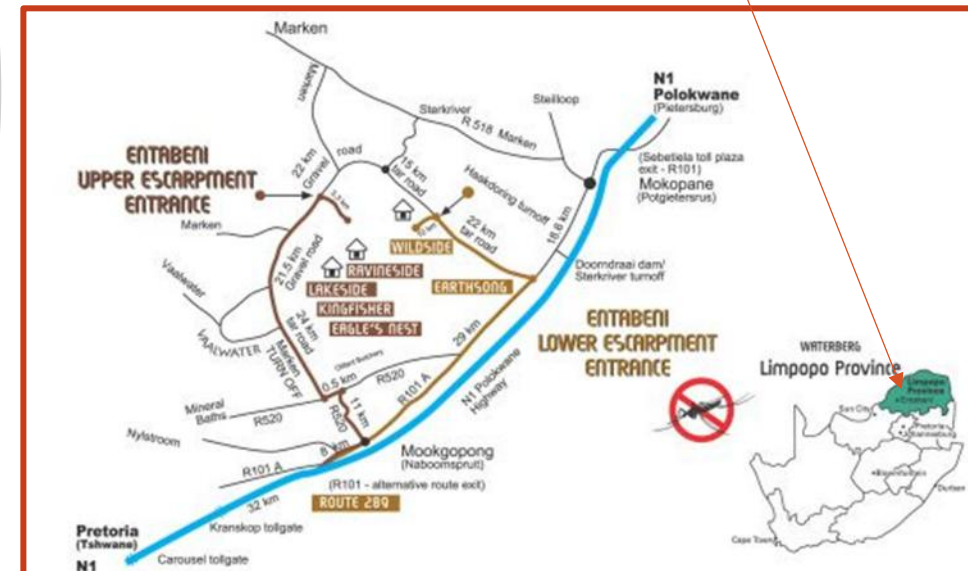
Gap Africa Projects

+44 (0) 744 260 1694

24 Hour Emergency Only

Gap Africa Projects In Country Contact

+27 (0) 79 313 2276 Carmen Warmenhove



Health Risks

Immunisation:

When entering South Africa, no international immunisation is required. However, a yellow fever vaccination certificate is required from travellers if they enter South Africa within 6 days of leaving an infected country.

Our advice: Visit your local (travel) doctor to get up-to-date information about requirements when travelling.

DTP inoculation (diphtheria, tetanus and polio) is essential. Please visit the following web page for advice from the UK Foreign Office:

<https://travelhealthpro.org.uk/country/201/south-africa>

Drinking Water:

Drinking water is available at the project; always make sure you keep hydrated.

HIV/Aids in South Africa:

As in other countries, HIV/Aids is a serious concern in South Africa and one you must be aware of. You should always be careful when dealing with an injured person to avoid the risk of infection. Always take necessary precautions and avoid sexual contact.

Sun:

South Africa has a warm sunny climate, you should wear sunscreen and a hat whenever you are out of doors during the day, particularly between 10am and 4 pm – regardless of whether there is cloud cover or not. Whatever your complexion you can still get sunburned if you are from a cooler climate. Sunglasses are also recommended as the glare of the African sun can be very strong.

Malaria:

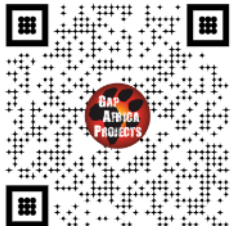
The project is located in a malaria free area.

<http://www.sa-venues.com/malaria-risk-areas.htm>

Insurance

Personal travel insurance is compulsory. Travel insurance does not need to be expensive and there are many good deals available for backpackers etc. Always be sure to check the insurance details to make sure you are covered for Covid 19, theft, loss, illness and injury. Check to see if your medical benefits are paid out as they incur or on your return home.

You should select 'Adventure Pack' as this will cover you for the type of activities you will undertake during your trip.



<https://www.true Traveller.com/?tag=4480>

Passport Requirements

It can take up to 6 weeks to obtain a passport – remember to start this process in plenty of time.

Your passport needs to be valid for at least 30 days beyond your intended stay and have at least two blank pages.

Stay safe overseas – KBYG

The better prepared you are when you travel abroad the safer you will be. The Foreign, Commonwealth and Development Office offers 'Know Before You Go' travel advice, including simple precautions you can take before and during your trip.

To find out more, check out their website:

<https://www.gov.uk/browse/abroad/travel-abroad>

Visa Requirements

A visa is not required for British Passport holders, all other nationalities should check the requirements via the website below, if required a visa can be obtained from the South African High Commission.

<http://www.dha.gov.za/index.php/immigration-services/exempt-countries>

Climate

Summers in the Limpopo Province are warm, temperatures may exceed 40c and winters are mild however temperature can fall to below 0c at night and early mornings.

Have a look at the accuweather website, link below, for more information:

<https://www.accuweather.com/en/za/sterkrivier/305655/weather-forecast/305655?city=sterkrivier>

Tipping

Whilst there is no obligation, it is a nice gesture to show your appreciation for the rangers and housekeeping staff by leaving a small tip/donation for the staff at the reserve when you leave; any amount is always appreciated.

On day trips/excursions it is also a nice gesture to show your appreciation for the guide.

Currency & Credit Cards

The currency for South Africa is the South African Rand (ZAR). Foreign exchange may be arranged at the airport or in major centres. It is not recommended that travellers carry large sums of cash, keep a reasonable amount on hand and primarily use credit cards.

All major credit cards are widely accepted at shops in large towns, the reserve does have credit card facilities.

Travel Cards are very useful; preload before travelling and the best exchange rate is used.

Wise Travel Card offers up to £500.00 with no transfer fee for Gap Africa Project Travellers:



<https://wise.prf.hn/l/XZJx9gq>

Phones & Internet

Mobile phone coverage is good in Gauteng and average at Entabeni, although there may be some areas on the reserve where there isn't any coverage. Using an eSIM or purchasing a SIM card at the airport is another option.

There is no Wi-Fi at the accommodation. Internet speeds are not up to international urban standards but are effective for communication.

We have partnered with Holafly eSim provider 5% discount use code GAPAFRICAPROJECTS


Benefits of an eSIM


- Unlimited Data Plans
- Uses both Vodacom and MTN the two major networks in South Africa
- Keep your WhatsApp number
- Immediate Delivery


Holafly





<https://shorturl.at/sxE29>



Unlimited data
Enjoy unlimited data while traveling to numerous destinations worry-free. [Learn more](#)


Keep using your favorite apps
Get that safe ride home, find that great restaurant, and pin the local attractions, all while staying connected with your loved ones.


Keep your WhatsApp number
You can call and message all your contacts on WhatsApp, like you're in the same country. Don't lose touch with family and friends.


24/7 Customer Support
In need of assistance? Our 24/7 chat support is just a message away to keep you connected and help you with everything you need.


Fast and Reliable Internet Connection
Connect to the best networks at your destination and get internet that's both reliable and fast


Enjoy dual SIMs
Enjoy the flexibility of our digital eSIM while keeping the option to use your original SIM as usual whenever you need it.

ACCOMMODATION

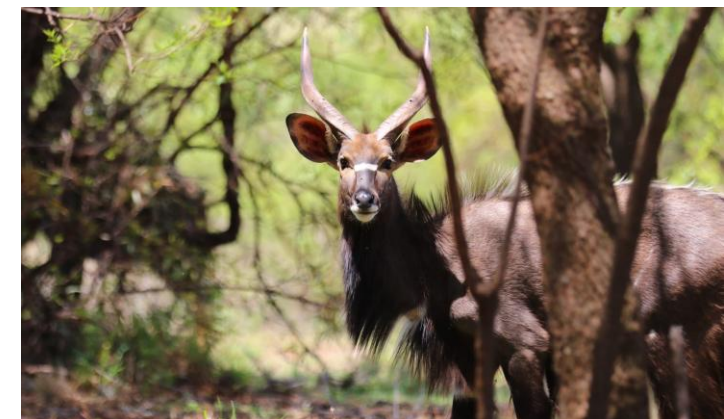
AFRICA

Gauteng – Phahama Game Lodge

You will be staying in accommodation with 2 or 4 beds with en-suite facilities.

There are outdoor seating areas and a garden with swimming pool.

The lodge offers comfortable areas to relax and unwind, it has WiFi and is ideally located for the various project locations in and around Gauteng.



ACCOMMODATION & LIFESTYLE

AFRICA

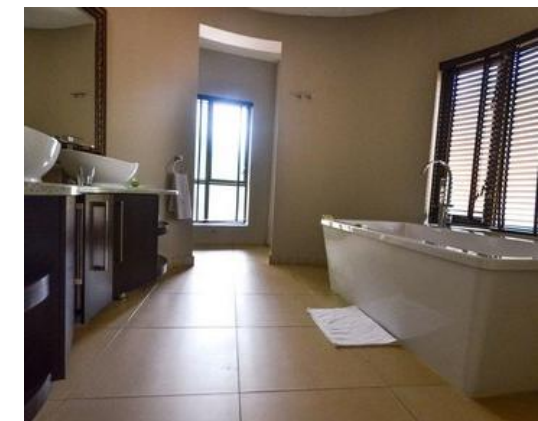
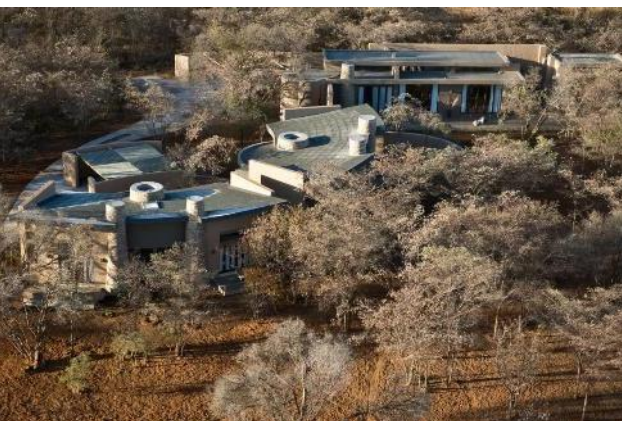
Waterberg – Entabeni Accommodation

You will stay in twin bedded rooms with ensuite facilities.

There are 4, 5 and 6 bedroom units each of which has an open plan layout with lounge and dining area and a fully equipped kitchen.

Evenings are spent at leisure around the campfire.

Only Sunday will be an off day to 'chill' in camp or do extra activities.



Food at the Project

All meals will be provided at Phahama Lodge. A packed lunch will be provided if the group are not returning to the accommodation at lunch time.

At Entabeni all meals are included. The students will self prepare meals as a group in one of the kitchens.

Some days lunch will be at the accommodation; other days lunch will be brought into the field to be taken as a picnic.

Dietary Requirements

Provision can be made for Vegetarian & Vegan diets and for those who have a medical condition such as Coeliac disease that requires a Gluten Free Diet and for those with severe allergies to dairy, eggs or nuts.



Suggested kit list

To allow for ease of transfer to the project a soft holdall/ soft suitcase is preferred.

- Short and long sleeve t-shirts
- Long work trousers and shorts (or work/zip-off trousers)
- Hiking boots/comfortable walking shoes to work in every day
- Waterproof jacket
- Sweatshirt/Fleece (Winter months pack plenty)
- Padded jacket/windbreaker (Winter months) although it can get very cold on an open vehicle even in summer
- Socks
- Underwear
- Change of casual clothes for evenings
- Sandals / comfy shoes to wear after work hours
- Warm hat (Winter only) / Hat for sun protection (all year)
- Gloves for warmth (Winter only)
- Working gloves
- Daypack rucksack
- Surgical gloves
- Swimwear
- Sunscreen and Sunglasses
- Personal medical items
- First aid kit
- Toiletries
- Tick / Insect repellent
- Water bottle
- Good torch

Other useful items:

- Binoculars
- Camera
- Power bank
- Stethoscope

* All work clothes should be neutral or earth tones for working in the bush. No skimpy or bright-coloured clothing to be worn

WHAT'S INCLUDED

AFRICA

What is Included?

- Flights
- Transfers to/from project
- Accommodation
- Three meals per day
- All activities as part of the project
- Airport meet/greet
- 24/7 In country support



NOT Included

- Personal Travel Insurance*
- Meals on travel days – before arriving & after departing from project
- Any activities not specified as part of the project
- Visas/travel documents
- Tips

* We recommend you take out insurance as soon as your booking is confirmed



GLOBAL reach. **ADVENTURE** for all. **PROJECTS** to inspire.

Explore our network of Global Adventure Projects:



GLOBALADVENTUREPROJECTS.COM

