



HULL COLLEGE PROJECT PRESENTATION

Waterberg Construction and Conservation Project



GLOBAL reach. **ADVENTURE** for all. **PROJECTS** to inspire.

ABOUT US:

AFRICA

GAP Africa Projects

- We are a specialised travel company that offers academic trips and volunteering opportunities for groups and individual travellers, in a number of locations worldwide
- We pride ourselves on curating experiences which are personalised to your needs and requirements
- Our first project travelled in 2012
- Full ATOL Bonding
- Working with over 55 Colleges and Universities around the UK
- A small dedicated team in the UK and South Africa



An aerial photograph of a rural property in Africa. The main building is a light blue, single-story house with a green metal roof. A solar panel array is mounted on the roof. To the left of the main house is a smaller structure with a thatched roof. The property is surrounded by lush green vegetation and a dirt road. In the background, there are rolling hills and a clear sky.

AFRICA

ABOUT THE WATERBERG

Project overview and location

ABOUT THE WATERBERG

AFRICA

Your Construction and Conservation Field Trip Explained

- A unique construction and conservation experience based in South Africa
- Live & work in one research camp on a wild African game reserve
- 15-night programme specifically tailored
- Hands on construction work at the reserve
- Learn about conservation management
- Project Activities include:
 - Maintenance and Repairs to the Reserve
 - New build projects
 - Practical Conservation Activities
- Dedicated vehicles and conservation staff
- All-inclusive experience
- The most incredible wildlife experience you will ever have

ABOUT THE WATERBERG

AFRICA

Waterberg Construction and Conservation Project

Our academic team and qualified rangers at the Waterberg Construction and Conservation Project offer a bespoke course to each institution dependent on their own personal objectives and learning needs.

This is not a Safari Holiday!

A full day will be planned but will vary from day to day depending on the days task and research goals.

15 Night Project at SwebeSwebe Nature Reserve



ABOUT THE WATERBERG

AFRICA

Waterberg Construction and Conservation Research – Location



ABOUT THE WATERBERG

TRUE WILDERNESS

AFRICA



ANY QUESTIONS?

INFO@GAPAFRICAPROJECTS.COM | +44 (0)207 1937819

Project Presentation 7

An aerial photograph of a rural homestead in Africa. The scene features a traditional thatched-roof hut with a circular opening in the foreground, and a larger, light-colored house with a green roof and solar panels. The buildings are situated on a grassy area, surrounded by a dense forest of green trees and a dirt road winding through the landscape. In the background, a large, flat-topped mountain is visible under a clear sky.

AFRICA

ABOUT THE PROJECT

Our conservation work
in more detail

ABOUT SWEBESWEBE

AFRICA

SwebeSwebe Nature Reserve

- 2,500 acres Privately Managed Nature Reserve, part of a 15,000-acre reserve
- Forming part of the Waterberg Biosphere
- Work alongside the team including:
 - Construction Work – Repairs, Maintenance and New Build
 - Conservation Research
 - Cutting Edge Conservation
- Located in a Malaria free zone
- Proclaimed Protected Conservation Area
- Big Game & Predator Free

YOUR PROJECT

AFRICA

Your Programme – SwebeSwebe

Students will be taught and work alongside the reserve staff and field guides. The following examples depict the day-to-day activities that may be undertaken as part of the construction and conservation project.

- Repairs at overnight huts, Hanover House and the lookout tower
- Building a new outdoor toilet block
- Fence maintenance and road repairs
- New borehole and borehole maintenance
- Converting bow hunting hides into bird and vulture hides
- Game Drive and Bush walks
- Anti-poaching talks and fence walk
- Tracks, Signs and Spoor
- Vegetation Management
- Rhino Monitoring – Awareness



ABOUT SWEBESWEBE

AFRICA

Construction Work



ANY QUESTIONS?

INFO@GAPAFRICAPROJECTS.COM | +44 (0)207 1937819

Project Presentation 11

ABOUT SWEBESWEBE

AFRICA

Construction Work



ANY QUESTIONS?

INFO@GAPAFRICAPROJECTS.COM | +44 (0)207 1937819

Project Presentation 12

ABOUT SWEBESWEBE

AFRICA

Practical Management



ANY QUESTIONS?

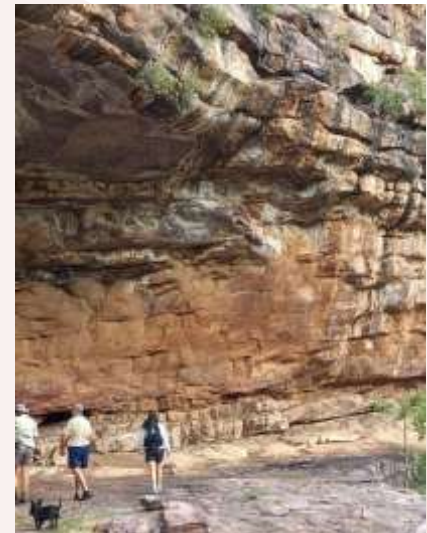
INFO@GAPAFRICAPROJECTS.COM | +44 (0)207 1937819

Project Presentation 13

ABOUT SWEBESWEBE

AFRICA

Rural Development and Support



ANY QUESTIONS?

INFO@GAPAFRICAPROJECTS.COM | +44 (0)207 1937819

Project Presentation 14

ABOUT SWEBESWEBE

AFRICA

Home to over 30 Species of Mammal



ANY QUESTIONS?

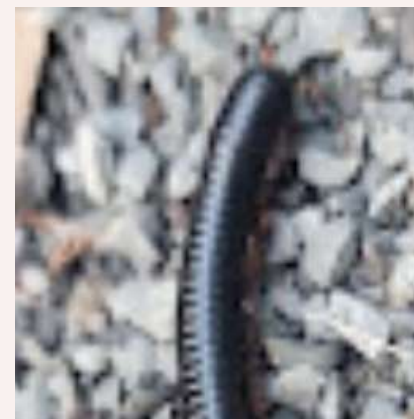
INFO@GAPAFRICAPROJECTS.COM | +44 (0)207 1937819

Project Presentation 15

ABOUT SWEBESWEBE

AFRICA

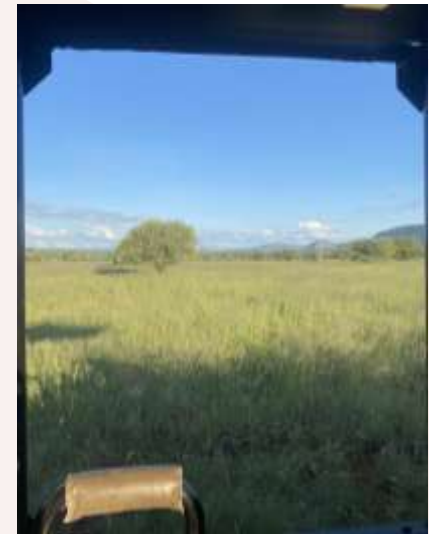
Many Reptile, Insect and Bird Species



ABOUT SWEBESWEBE

AFRICA

Game Drives



ANY QUESTIONS?

INFO@GAPAFRICAPROJECTS.COM | +44 (0)207 1937819

Project Presentation 17

ABOUT SWEBESWEBE

AFRICA

Bush Skills – Bush Walks, Tracking Wildlife



ANY QUESTIONS?

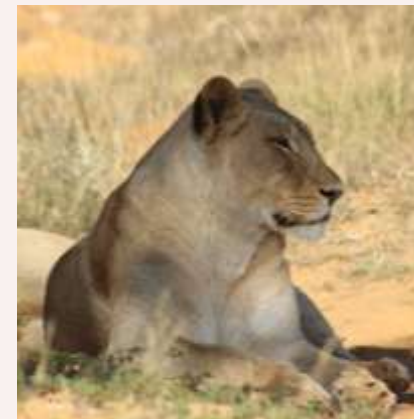
INFO@GAPAFRICAPROJECTS.COM | +44 (0)207 1937819

Project Presentation 18

YOUR PROJECT

AFRICA

Big Five Game Reserve



ANY QUESTIONS?

INFO@GAPAFRICAPROJECTS.COM | +44 (0)207 1937819

Project Presentation 19



AFRICA

ACCOMMODATION & LIFESTYLE

Living in the African Bush

ACCOMMODATION & LIFESTYLE

AFRICA

SwebeSwebe – Hanover Nature Reserve Accommodation

Students and academic groups will be accommodated at our purpose-built camp on Hanover Nature Reserve,



ANY QUESTIONS?

INFO@GAPAFRICAPROJECTS.COM | +44 (0)207 1937819

Project Presentation 21

ACCOMMODATION & LIFESTYLE

AFRICA

Hanover Nature Reserve Accommodation



ANY QUESTIONS?

INFO@GAPAFRICAPROJECTS.COM | +44 (0)207 1937819

Project Presentation 22

ACCOMMODATION & LIFESTYLE

AFRICA

Food at the Project

Three meals are provided daily on a self cook basis, prepared communally by the group. Students will take part in communal cooking and keeping the kitchen tidy.

Dietary Requirements

Provision can be made for Vegetarian & Vegan diets and for those who have a medical condition such as Coeliac disease that requires a Gluten Free Diet and for those with severe allergies to dairy, eggs or nuts.



ACCOMMODATION & LIFESTYLE

AFRICA

Life on Reserve



ANY QUESTIONS?

INFO@GAPAFRICAPROJECTS.COM | +44 (0)207 1937819

Project Presentation 24

An aerial photograph of a rural African homestead. In the foreground, there is a traditional thatched-roof hut with a circular opening. To its right is a modern, light blue house with a green metal roof and solar panels. The property is surrounded by lush greenery and a dirt road winds through the background. A semi-transparent dark grey circle is overlaid on the left side of the image, containing text.

AFRICA

BOOKING YOUR ADVENTURE

The next steps to the trip of a
lifetime!

WHAT'S INCLUDED

AFRICA

What is Included?

- Flights
- Transfers to/from project in SA
- Accommodation
- Three meals per day
- All activities as part of the project
- Airport meet/greet in JNB
- 24/7 In-country support



NOT Included

- Personal Travel Insurance *
- Meals on travel days – before arriving & after departing from project
- Any activities not specified as part of the project
- Visas/travel documents
- Provided by the college – please confirm with your college the details of the insurance provided.
- You must ensure the college are aware of any pre-existing medical conditions

THE NEXT STEPS

AFRICA

Project dates & key deadlines

Confirmed trip dates:

Depart UK: 14th March 2026 | Arrive SA: 15th March 2026

Depart SA: 30th March 2026 | Arrive UK 31st March 2026

Booking Form

Please submit by today!

Passport fields not mandatory



The screenshot shows the 'BOOKING FORM' for GAP Africa Projects. It includes a header with the organization's logo and social media icons. The main content area contains a 'BOOKING FORM' section with the following fields:

- Title**: A dropdown menu.
- Name**: Two text input fields for first and last names.
- Date of birth**: Three dropdown menus for day, month, and year.
- Address**: Multiple text input fields for street address, city, and country.
- Telephone**: A text input field.
- Mobile**: A text input field.
- Email 1**: A text input field.
- Email 2**: A text input field.
- Passport no.**: A text input field.
- Passport issue Date**: Three dropdown menus for day, month, and year.

Below the form, there is a note: "(NB: Please note that all booking correspondence will be sent via Email)".

THE NEXT STEPS

AFRICA

Confirmation Documents

Confirmation documents will be issued and sent directly to you via email.

Please communicate with us with any questions relating to the field trip.

Your Booking

Travel Advice

Names and surnames

Passport expiry date

Passport Copies

Travel Insurance

Passengers Travelling

Your Flight(s)

FLIGHT	CLASS	FARE BASIS	CARRIER	CLASS	FARE BASIS	CARRIER
IN/OUT	Y	Y	BA	Y	Y	BA
IN/OUT	Y	Y	BA	Y	Y	BA
IN/OUT	Y	Y	BA	Y	Y	BA
IN/OUT	Y	Y	BA	Y	Y	BA

CONFIRMATION INVOICE

Total Land Conservation Revenue

Item	Amount
Land Conservation Revenue	1,000.00
Total	1,000.00

Passenger Details

Name	Date of Birth	Gender	Age
John Doe	1980-01-01	M	38
Jane Smith	1985-03-15	F	33

ATOL Certificate

This certifies that your money is protected by the ATOL scheme and that you can get home if your travel company ceases.

Who is protected?

What is protected?

Who is protecting your trip?

Your protection

If you have booked a holiday package, you must follow the instructions at www.atol.org.uk before there will be details of arrangements to bring people back to the UK, and information on how people can claim their money back or you can call 1444 70 7483 6355.

BOOKING YOUR ADVENTURE

AFRICA

Group Web Page

<https://gapafricaprojects.com/26-4755/>



Booking Form

<https://gapafricaprojects.com/booking-form-26-4755-hua-wcc-hull-college/>



BOOKING FORM

Your Global Adventure Starts here!

Please use the form below to submit your provisional booking to your selected project. You have the option to pay your initial deposit with the submission of your booking form, or we will contact you for payment once your project placement has been secured.

If you'd like to contact us to ask any initial questions or find out more about what project you'd like to go on and when, you can get also get in touch using our short enquiry form, or by calling +44 (0) 207 193 7819.

(NB: Your name should be given as displayed on your passport)

Title *

Name *

Date of birth *

Address *

Sustainability & Social, Economic Responsibility

Local employment from rural communities – our project partners employ a high percentage of staff from local communities. They advocate training to advance careers in hospitality, wildlife and conservation.

Low environmental impact camps – our project bush camps are built with minimal impact on the environment. Resources from the surrounding area are utilised for buildings, water is (where possible) pumped from local river sources and green energy supplies, such as solar are championed.

Community donations and support – we encourage all our international study groups to be proactive in donation collections and arrange for excess baggage for said donations to be taken out to South Africa in support of the local communities.

Move Africa, supporting young females – 3 in 10 girls in South Africa miss a week of school every month because they cannot afford basic sanitary products. Our project partners work with Move Africa alongside their partner NGOs, to distribute menstrual cups to the local communities and provide education workshops.

Rhino Art – Project rhino realises the enormous responsibility the youth have to ensure our wildlife is protected for many generations to come. They ensure they can reach and educate as many kids as possible through Rhino Art, using art workshops to teach about conservation. This initiative is supported by our local project partners.

Food/crop education – our project partners encourage food and crop education to rural communities, where cost of living to low income families and distance travelled to obtain basic resources can prove problematic. Projects include community allotments and providing education on best practice for crop rotations, harvest seasons and nutrition.

Recycling workshops – Litter, and in particular plastics, is a major issue and threat to the ecosystem in Southern Africa. Rural communities have limited waste removal available and it is therefore a problem escalating at an alarming rate. Recycling workshops are provided through local schools to help educate children on the importance of correctly disposing of litter and recycling plastics.



GLOBAL reach. **ADVENTURE** for all. **PROJECTS** to inspire.

Explore our network of Global Adventure Projects:



GLOBALADVENTUREPROJECTS.COM

