



WYKE 6TH FORM COLLEGE PRE-DEPARTURE PACK



KwaZulu-Natal Community Volunteering Project

AFRICA

GLOBAL reach. **ADVENTURE** for all. **PROJECTS** to inspire.

TRIP OVERVIEW

AFRICA

Wyke 6th Form College – Booking Reference 4742

Travel Dates:

22nd March 2026 – 5th April 2026

Flights:

Flight No	Flight Date	Dept.	Dept. Time	Arr.	Arr. Time
QR024	22/03/2026	Manchester (MAN)	21:30	Doha (DOH)	07:15 + 1 Day
QR1377	23/03/2026	Doha (DOH)	08:05	Johannesburg (JNB)	15:35
TBC	05/04/2026	King Shaka Int: Durban (DUR)	TBC	Johannesburg (JNB)	TBC
QR1378	05/04/2026	Johannesburg (JNB)	20:40	Doha (DOH)	06:00 + 1 Day
QR027	06/04/2026	Doha (DOH)	07:55	Manchester (MAN)	13:15

*Always check the flight timings on your final documents

Baggage Allowance – 1 piece of checked baggage @ 20kgs & 1 piece of hand baggage @ 7kgs maximum dimensions 56x36x23cm

Project:

KwaZulu-Natal Community Volunteering Project

ARRIVAL

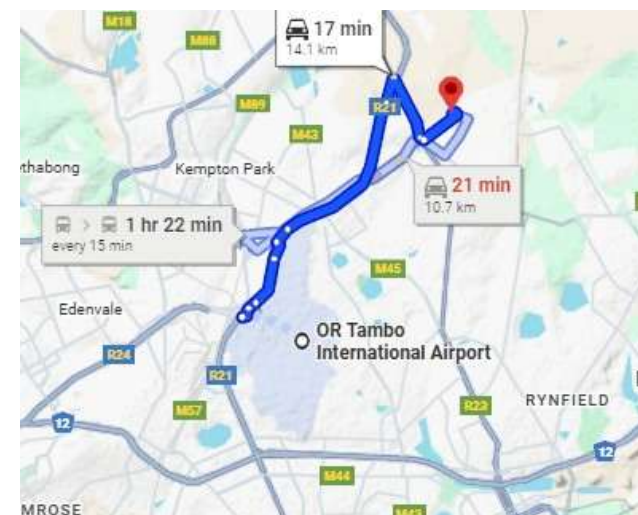
AFRICA

Arrival at Johannesburg International Airport (OR Tambo)

Upon arrival at Johannesburg airport, you must clear passport control and collect your baggage from baggage reclaim before heading into the arrivals hall.

Either Carmen or Lesedi, the GAP Africa Projects representative, will meet you **next to the statue** as you come into the arrivals hall. They will assist you with your transfer to the Airport Bird and Game Lodge, a drive of approximately 20-30 minutes.

If for any reason you cannot locate the representative, please call Carmen on +27 (0) 79 313 2276.



ARRIVAL

AFRICA

City Lodge Hotel OR Tambo International Airport

As you arrive in South Africa in the afternoon, you will be staying at the Airport Bird and Game Lodge Hotel. Rooms will be shared and an evening meal and breakfast will be included.

You will leave the hotel nice and early the next morning, arriving at Nambiti by lunch time.

A representative from Champagne Shuttles & Coach Hire will meet you in the hotel reception.

If for any reason you cannot locate the representative, please call Lundy Bredberg on 27(0) 81 816 2541



CONTACT DETAILS

AFRICA

Address

Nambiti Game Reserve
Nambiti North Gate
Kwazulu Natal, Ladysmith 3370
South Africa

Nambiti Landline

Telephone: +27 (0) 36 631 9026

Mobile

+27(0) 81 816 2541
Lundy Bredberg (Project Manager)

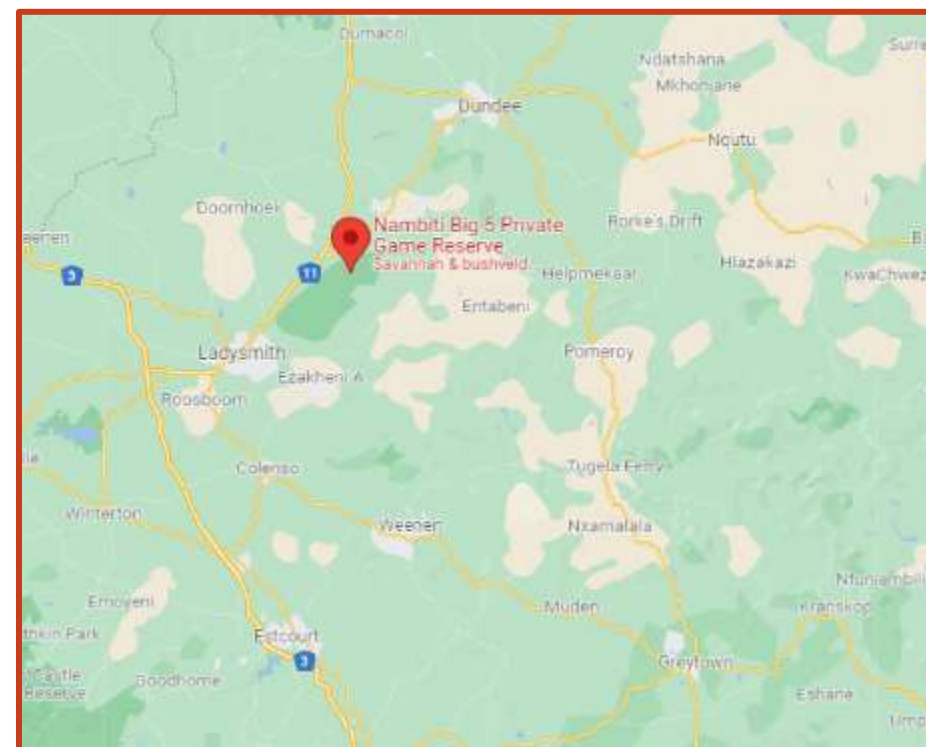
Gap Africa Projects

+44 (0) 744 260 1694

24 Hour Emergency Only

Gap Africa Projects In Country Contact:

+27 (0) 79 313 2276 Carmen Warmenhove



AFRICA

Tel: +27 35 590 1087

Lundy Bredberg (Project Manager)

+44 (0) 744 260 1694

24 Hour Emergency Only

+27 (0) 79 313 2276 Carmen Warmenhove



USEFUL INFORMATION

AFRICA

Health Risks

Immunisation:

When entering South Africa, no international immunisation is required. However, a yellow fever vaccination certificate is required from travellers if they enter South Africa within 6 days of leaving an infected country.

Our advice: Visit your local (travel) doctor to get up-to-date information about requirements when travelling.

DTP inoculation (diphtheria, tetanus and polio) is essential. Please visit the following web page for advice from the UK Foreign Office:

<https://travelhealthpro.org.uk/country/201/south-africa>

Drinking Water:

Drinking water is available at the project; always make sure you keep hydrated.

HIV/Aids in South Africa:

As in other countries, HIV/Aids is a serious concern in South Africa and one you must be aware of. You should always be careful when dealing with an injured person to avoid the risk of infection. Always take necessary precautions and avoid sexual contact.

Sun:

South Africa has a warm sunny climate, you should wear sunscreen and a hat whenever you are out of doors during the day, particularly between 10am and 4 pm – regardless of whether there is cloud cover or not. Whatever your complexion you can still get sunburned if you are from a cooler climate. Sunglasses are also recommended as the glare of the African sun can be very strong.

Malaria:

The project is located in a malaria free area.

<http://www.sa-venues.com/malaria-risk-areas.htm>

USEFUL INFORMATION

AFRICA

Insurance

Personal travel insurance is compulsory. Travel insurance does not need to be expensive and there are many good deals available for backpackers etc. Always be sure to check the insurance details to make sure you are covered for Covid 19, theft, loss, illness and injury. Check to see if your medical benefits are paid out as they incur or on your return home.

You should select 'Adventure Pack' as this will cover you for the type of activities you will undertake during your trip.



<https://www.true Traveller.com/?tag=4480>

Passport Requirements

It can take up to 6 weeks to obtain a passport – remember to start this process in plenty of time.

Your passport needs to be valid for at least 30 days beyond your intended stay and have at least two blank pages.

Stay safe overseas – KBYG

The better prepared you are when you travel abroad the safer you will be. The Foreign, Commonwealth and Development Office offers 'Know Before You Go' travel advice, including simple precautions you can take before and during your trip.

To find out more, check out their website:

<https://www.gov.uk/browse/abroad/travel-abroad>

Visa Requirements

A visa is not required for British Passport holders, all other nationalities should check the requirements via the website below, if required a visa can be obtained from the South African High Commission.

<http://www.dha.gov.za/index.php/immigration-services/exempt-countries>

USEFUL INFORMATION

AFRICA

Climate

KwaZulu-Natal is one of the cooler regions of South Africa, with an average daily high temperature of 25 C. The driest months are May to August, most rain days occur from October to January.

It can get very cold in the evenings and at night during the winter months, July being the coldest month.

Have a look at the accuweather website for more information, link below:

<https://www.accuweather.com/en/za/ladysmith>

Tipping

Whilst there is no obligation, it is a nice gesture to show your appreciation for the rangers and housekeeping staff by leaving a small tip/donation for the staff at the reserve when you leave; any amount is always appreciated.

10% is the norm in cafes and restaurants.

Currency & Credit Cards

The currency for South Africa is the South African Rand (ZAR). Foreign exchange may be arranged at the airport or in major centres. It is not recommended that travellers carry large sums of cash, keep a reasonable amount on hand and primarily use credit cards.

All major credit cards are widely accepted in main towns, although local communities only take cash.

Wise Travel Card offers up to £500.00 with no transfer fee for Gap Africa Project travellers:



<https://wise.prf.hn/l/XZJx9gq>

USEFUL INFORMATION

AFRICA

Phones & Internet

Mobile phone coverage is average at Nambiti, although there may be some areas on the reserve where there isn't any coverage. Coverage is very good in St Lucia. Using an eSIM or purchasing a SIM card at the airport is another option.

Some Wi-Fi is provided free of charge at the accommodation. Internet speeds are not up to international urban standards but are effective for communication.

We have partnered with Holafly eSim provider 5% discount use code GAPAFRICAPROJECTS.







Benefits of an eSIM

- Unlimited Data Plans
- Uses both Vodacom and MTN the two major networks in South Africa
- Keep your WhatsApp number
- Immediate Delivery

Holafly



<https://shorturl.at/sxE29>

 Unlimited data Enjoy unlimited data while traveling to numerous destinations worry-free. Learn more	 Keep using your favorite apps Get that safe ride home, find that great restaurant, and pin the local attractions, all while staying connected with your loved ones.	 Keep your WhatsApp number You can call and message all your contacts on WhatsApp, like you're in the same country. Don't lose touch with family and friends.
 24/7 Customer Support In need of assistance? Our 24/7 chat support is just a message away to keep you connected and help you with everything you need.	 Fast and Reliable Internet Connection Connect to the best networks at your destination and get internet that's both reliable and fast.	 Enjoy dual SIMs Enjoy the flexibility of our digital eSIM while keeping the option to use your original SIM as usual whenever you need it.

ACCOMMODATION

AFRICA

Game Reserve Camp – Nambiti

In keeping with the Safari Adventure theme, groups are accommodated on the reserve in shared comfortable safari tents, with communal hot and cold showers and regular flushing toilets.



ACCOMMODATION

AFRICA

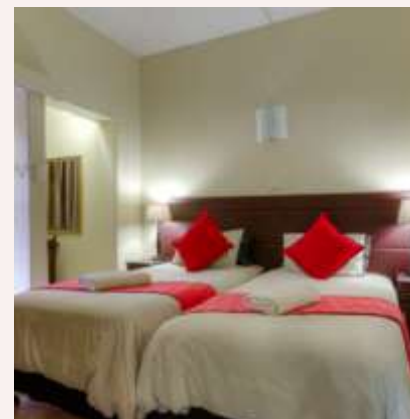
Shonalanga Accommodation – St Lucia

Guest House style accommodation is provided during your time in St Lucia.

You will be accommodated in twin rooms with ensuite facilities.

There are no facilities for washing clothes at the accommodation but there are launderettes nearby which are not expensive.

The guest house is located in the heart of St Lucia's Main Street and is the ideal location to explore the surrounding area.



ACCOMMODATION

AFRICA

Food at the Project

Three meals are provided a day prepared by the kitchen staff.

Breakfasts will consist of toast and cereals; lunch may include pasta, wraps, burgers, stir fry; dinners include meat, fish and vegetables with rice, potatoes or pasta.

On weekends a braai (BBQ) is often organised.

Dietary Requirements

Provision can be made for Vegetarian & Vegan diets and for those who have a medical condition such as Coeliac disease that requires a Gluten Free Diet and for those with severe allergies to dairy, eggs or nuts.



USEFUL INFORMATION

AFRICA

Suggested kit list

To allow for ease of transfer to the project a soft holdall/ soft suitcase is preferred.

- Short and long sleeve t-shirts
- Long work trousers and shorts (or work/zip-off trousers)
- Hiking boots/comfortable walking shoes to work in every day
- Waterproof jacket
- Sweatshirt/Fleece (Winter months pack plenty)
- Padded jacket/windbreaker (Winter months) although it can get very cold on an open vehicle even in summer
- Socks
- Underwear
- Change of casual clothes for evenings
- Sandals / comfy shoes to wear after work hours
- Warm hat (Winter only) / Hat for sun protection (all year)
- Gloves for warmth (Winter only)
- Daypack rucksack
- Swimwear
- Beach Towel
- Sunscreen and Sunglasses
- Personal medical items
- First aid kit
- Toiletries
- Tick / Insect repellent
- Water bottle

Other useful items:

- Binoculars
- Camera
- Power bank
- Good torch

* All work clothes should be neutral or earth tones for working in the bush. No skimpy or bright-coloured clothing to be worn

WHAT'S INCLUDED

AFRICA

What is Included?

- Flights
- Transfers to/from project
- Accommodation
- Three meals per day unless specified
- All activities as part of the project
- ATOL protection
- Airport meet/greet
- 24/7 In country support



NOT Included

- Personal Travel Insurance *
- Meals on travel days – before arriving & after departing from project
- Any activities not specified as part of the project
- Visas/travel documents

* Provided by the college – please confirm with your college the details of the insurance provided.



GLOBAL reach. **ADVENTURE** for all. **PROJECTS** to inspire.

Explore our network of Global Adventure Projects:



GLOBALADVENTUREPROJECTS.COM

