



# BISHOP BURTON COLLEGE PROJECT PRESENTATION



## Shamwari Group Expedition



**GLOBAL** reach. **ADVENTURE** for all. **PROJECTS** to inspire.

# ABOUT US:

AFRICA

## GAP Africa Projects

- We are a specialised travel company that offers academic trips and volunteering opportunities for groups and individual travellers, in a number of locations worldwide
- We pride ourselves on curating experiences which are personalised to your needs and requirements
- Our first project travelled in 2012
- Full ATOL Bonding
- Working with over 55 Colleges and Universities around the UK
- A small dedicated team in the UK and South Africa





AFRICA

# ABOUT SHAMWARI GAME RESERVE

Project overview and  
location

## Your Conservation Field Trip Explained

- A unique conservation experience based in South Africa
- Live on a Wild African Game Reserve
- The opportunity to experience hands on wildlife conservation
- Working behind the scenes on a Game Reserve in Africa
- Tailor made projects to suit your needs and interests
- Project Activities include:
  - Pioneering Conservation Research
  - Conservation Activities
  - Adventure and Excitement
- 12 Night experience
- The most incredible wildlife experience you will ever have

## What is a Game Reserve?

- A game reserve is a large area of protected land where wild animals can live safely.
- Wildlife is free roaming throughout the reserve allowing them to thrive in their natural habitat.
- Reserves are either Government Owned (National Parks) or Privately Owned/Managed.
- Most reserves will have physical boundaries i.e. electrified fence line.
- Due to physical boundaries, wildlife must be managed due to restraints on population growth, migration and resources.
- Wildlife is protected but also utilised as a tourist attraction (Eco Tourism) which creates funding for conservation efforts and research.



# ABOUT SHAMWARI

AFRICA

## Shamwari Game Reserve

- 24,000 Hectare Privately Owned Game Reserve
- A pioneer in conservation in Southern Africa
- Award-winning team including:
  - Wildlife Vets
  - Conservationists
  - Ecologists
  - Anti Poaching
- Home to Born Free Foundation
- Vulpro, Vulture Conservation Project
- Lodge dedicated to our groups



# ABOUT SHAMWARI

AFRICA

## Shamwari Game Reserve - Location



ANY QUESTIONS?

[INFO@GAPAFRICAPROJECTS.COM](mailto:INFO@GAPAFRICAPROJECTS.COM) | +44 (0)207 1937819

PRE DEPARTURE INFORMATION 7

# ABOUT SHAMWARI

AFRICA

## Shamwari Game Reserve – Location

- South Africa a world leader in conservation
- Privately owned Shamwari Game Reserve
- Malaria-free Eastern Cape



# ABOUT SHAMWARI

AFRICA

## Home to the BIG 5



ANY QUESTIONS?

[INFO@GAPAFRICAPROJECTS.COM](mailto:INFO@GAPAFRICAPROJECTS.COM) | +44 (0)207 1937819

Project Presentation 9

# ABOUT SHAMWARI

AFRICA

Home to over 60 Species of Mammal



ANY QUESTIONS?

[INFO@GAPAFRICAPROJECTS.COM](mailto:INFO@GAPAFRICAPROJECTS.COM) | +44 (0)207 1937819

Project Presentation 10

# ABOUT SHAMWARI

AFRICA

## Reptiles and Birds



ANY QUESTIONS?

[INFO@GAPAFRICAPROJECTS.COM](mailto:INFO@GAPAFRICAPROJECTS.COM) | +44 (0)207 1937819

Project Presentation 11



AFRICA

## ABOUT THE PROJECT

Our conservation work  
in more detail

# ABOUT THE PROJECT

AFRICA

## Bush Skills – Monitoring Drives



ANY QUESTIONS?

[INFO@GAPAFRICAPROJECTS.COM](mailto:INFO@GAPAFRICAPROJECTS.COM) | +44 (0)207 1937819

Project Presentation 13

# ABOUT THE PROJECT

AFRICA

## Bush Skills – Bush Walks, Tracking Wildlife



ANY QUESTIONS?

[INFO@GAPAFRICAPROJECTS.COM](mailto:INFO@GAPAFRICAPROJECTS.COM) | +44 (0)207 1937819

Project Presentation 14

# ABOUT THE PROJECT

AFRICA

## Reserve Maintenance



ANY QUESTIONS?

[INFO@GAPAFRICAPROJECTS.COM](mailto:INFO@GAPAFRICAPROJECTS.COM) | +44 (0)207 1937819

Project Presentation 15

# ABOUT THE PROJECT

AFRICA

## Reserve Maintenance



ANY QUESTIONS?

[INFO@GAPAFRICAPROJECTS.COM](mailto:INFO@GAPAFRICAPROJECTS.COM) | +44 (0)207 1937819

Project Presentation 16

# ABOUT THE PROJECT

AFRICA

## Research – Elephant Monitoring



ANY QUESTIONS?

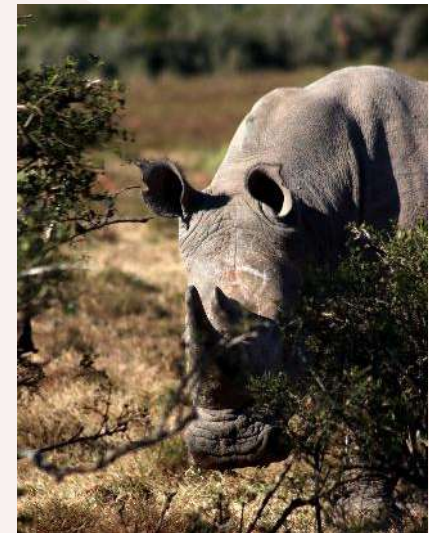
[INFO@GAPAFRICAPROJECTS.COM](mailto:INFO@GAPAFRICAPROJECTS.COM) | +44 (0)207 1937819

Project Presentation 17

# ABOUT THE PROJECT

AFRICA

## Research – Rhino Tracking



ANY QUESTIONS?

[INFO@GAPAFRICAPROJECTS.COM](mailto:INFO@GAPAFRICAPROJECTS.COM) | +44 (0)207 1937819

Project Presentation 18

# ABOUT THE PROJECT

AFRICA

## Rhino Awareness and Anti-Poaching Talks



ANY QUESTIONS?

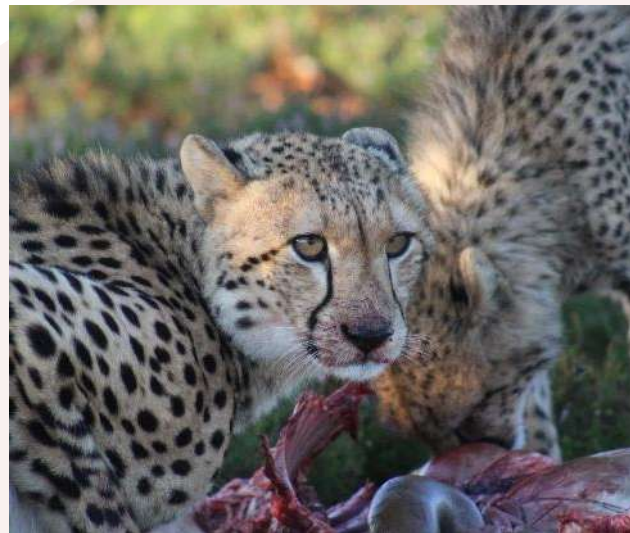
[INFO@GAPAFRICAPROJECTS.COM](mailto:INFO@GAPAFRICAPROJECTS.COM) | +44 (0)207 1937819

Project Presentation 19

# ABOUT THE PROJECT

AFRICA

## Research – Population Growth: Predators



ANY QUESTIONS?

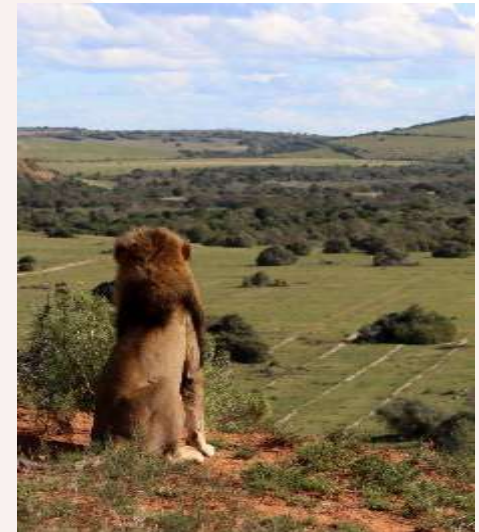
[INFO@GAPAFRICAPROJECTS.COM](mailto:INFO@GAPAFRICAPROJECTS.COM) | +44 (0)207 1937819

Project Presentation 20

# ABOUT THE PROJECT

AFRICA

## Research – Habitat and Prey Selection



ANY QUESTIONS?

[INFO@GAPAFRICAPROJECTS.COM](mailto:INFO@GAPAFRICAPROJECTS.COM) | +44 (0)207 1937819

Project Presentation 21

# ABOUT THE PROJECT

AFRICA

## Camera Trap – Research and Study



# ABOUT THE PROJECT

AFRICA

## Night Game Drives



ANY QUESTIONS?

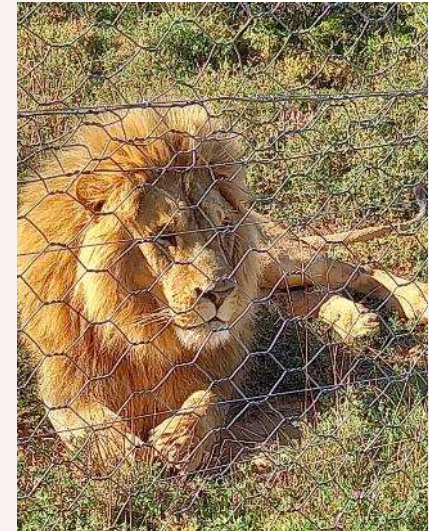
[INFO@GAPAFRICAPROJECTS.COM](mailto:INFO@GAPAFRICAPROJECTS.COM) | +44 (0)207 1937819

Project Presentation 23

# ABOUT THE PROJECT

AFRICA

## Visit the Born Free Foundation



ANY QUESTIONS?

[INFO@GAPAFRICAPROJECTS.COM](mailto:INFO@GAPAFRICAPROJECTS.COM) | +44 (0)207 1937819

Project Presentation 24

# ABOUT THE PROJECT

AFRICA

## Visit to the Vulpro Centre



ANY QUESTIONS?

[INFO@GAPAFRICAPROJECTS.COM](mailto:INFO@GAPAFRICAPROJECTS.COM) | +44 (0)207 1937819

Project Presentation 25

# ABOUT THE PROJECT

AFRICA

## Community Development



ANY QUESTIONS?

[INFO@GAPAFRICAPROJECTS.COM](mailto:INFO@GAPAFRICAPROJECTS.COM) | +44 (0)207 1937819

Project Presentation 26

# ABOUT THE PROJECT

AFRICA

## Community – GAP Donation Bags



ANY QUESTIONS?

[INFO@GAPAFRICAPROJECTS.COM](mailto:INFO@GAPAFRICAPROJECTS.COM) | +44 (0)207 1937819

Project Presentation 27



AFRICA

# WEEKEND EXCURSIONS

Your free time on the project

# 1 – DAY SUNSHINE COAST

AFRICA

Visit some of the most pristine coastline that South Africa has to offer and experience the thrill of sandboarding through the dunes. After the kayak is over, we will settle down to a beach braai (BBQ) in front of the crashing waves and beautiful views before the excitement of sandboarding.

## Itinerary

- 08:00 – Pick up at project
- 10:00 – Kayak paddle
- 12:00 – Beach BBQ Lunch
- 13:00 – Sandboarding
- 17:00 – Arrive at the project

## Included

- Professional guide
- Comfortable 14 – 22 seater vehicle with trailer
- Sandboard and Kayak rentals
- Lunch
- Transfers to/from accommodation

## Excluded

- Curios, tips and extra activities





AFRICA

# ACCOMODATION & LIFESTYLE

Living in the African Bush

# ACCOMMODATION & LIFESTYLE

AFRICA



ANY QUESTIONS?

[INFO@GAPAFRICAPROJECTS.COM](mailto:INFO@GAPAFRICAPROJECTS.COM) | +44 (0)207 1937819

Project Presentation 31

# ACCOMMODATION & LIFESTYLE

AFRICA



ANY QUESTIONS?

[INFO@GAPAFRICAPROJECTS.COM](mailto:INFO@GAPAFRICAPROJECTS.COM) | +44 (0)207 1937819

Project Presentation 32

# ACCOMMODATION & LIFESTYLE

AFRICA

## Life on Reserve – Life long memories



ANY QUESTIONS?

[INFO@GAPAFRICAPROJECTS.COM](mailto:INFO@GAPAFRICAPROJECTS.COM) | +44 (0)207 1937819

Project Presentation 33

# WHY SHOULD I TRAVEL?

AFRICA

## What do previous travellers say about the Shamwari Conservation Expedition?



"It was the most **amazing** experience I've ever had."



"I learnt so many new things that have **educated** me **beyond** classroom curriculum."



"There wasn't a single experience that didn't **amaze** me and make me feel **enriched**."

Reference: GAP Africa Projects Post Project Trip Questionnaire 23/24



**AFRICA**

# **BOOKING YOUR ADVENTURE**

The next steps to the trip of a  
lifetime!

# WHAT'S INCLUDED

AFRICA

## What is included?

- Transfers from college to the UK airport
- Flights
- Transfers to/from project
- Accommodation
- Three meals per day
- All activities as part of the project
- Airport meet/greet
- 24/7 In country support



## NOT Included

- Personal Travel Insurance \*
- Meals on travel days – before arriving & after departing from project
- Any activities not specified as part of the project
- Visas/travel documents
- Tips

\* We recommend that you take out personal travel insurance as soon as your booking is confirmed.

# THE NEXT STEPS

AFRICA



## Project dates & key deadlines

### Confirmed travel dates:

Depart UK: 8 November 2026 | Arrive SA: 9 November 2026

Depart SA: 21 November 2026 | Arrive UK: 22 November 2026

### Trip cost:

£2995.00\* Based on a group of 26 (confirmed once flights have been held)

### Key deadlines are:

- Return online booking form by 13/10/2025
- Deposit payment, £300.00 by 26/10/2025
- 50% instalment payment of £1347.50 to be paid by 20/07/2026
- Balance payment of £1347.50 to be paid by 14/09/2026
- 26/10/2026 e-Tickets & final documents will be issued

# BOOKING YOUR ADVENTURE

AFRICA

## Booking Form

- Please submit by 13/10/2025
- No deposit required at this stage of booking
- Passport fields not mandatory

## Key deadlines are:

- Deposit of £300 to confirm placement
- Instalment payment of 50% due 16 weeks before departure
- Balance payment due 8 weeks before departure

**GAP Africa Projects**

AFRICA PROJECTS | SOCIAL MEDIA | AFRICA PROJECTS | WHO WE ARE | BOOK | GET IN TOUCH

**GAP AFRICA PROJECTS**

### BOOKING FORM

(NB: Your name should be given as displayed on your passport)

Title \*

Name \*

Date of birth \*

Address \*

Telephone \*

Mobile \*

Email 1 \*

Email 2 \*

(NB: Please note that all booking correspondence will be sent via Email!)

Passport no.

Passport Issue Date

# THE NEXT STEPS

AFRICA

## Confirmation Documents

Confirmation documents will be issued and sent directly to you via email.

Please communicate with us with any questions relating to the field trip.



**Gap Africa Projects**

10 Oct 2022  
Ref: Z3-REA-LAL7-051

Dear Chloe,

Thank you for agreeing to book with Gap Africa Projects as part of the 6x hotel Chicago trip to Zulu Land Conservation Research. Please take the time to look through this document and check that everything is correct.

We have received your deposit payment and your payment is now confirmed upon the details below. The final balance and due date is detailed on your invoice.

Please remember that you can contact me to discuss anything in this document as well as any other aspect of your reservation and I am so glad to be your personal travel advisor for the entirety of your placement.

Warm regards,  
The GAP Africa Team

Passengers Travelling  
Miss Chloe  
Placement(s)  
Zulu Land Conservation Research [06/03/23 - 18/03/23]

Inclusions  
Flights, shared road transfers to and from Project, accommodation for duration, all meals and all project activities.

Exclusions  
Insurance: any activities undertaken that are not included as part of the project.

Your Flight(s)

Flight	Class	Depart	Arrive	From	To
05/03/2023: 041209	D: 15:00	A: 18:00	Manchester (MAN)	London Heathrow (LHR)	
05/03/2023: 0405	D: 18:20	A: 20:25 + 1 D	London Heathrow (LHR)	Frankfurt (FRA)	
08/03/2023: 0405	D: 20:15	A: 22:30 + 1 D	Frankfurt (FRA)	London Heathrow (LHR)	
12/03/2023: 041300	D: 09:35	A: 19:40	London Heathrow (LHR)	Manchester (MAN)	

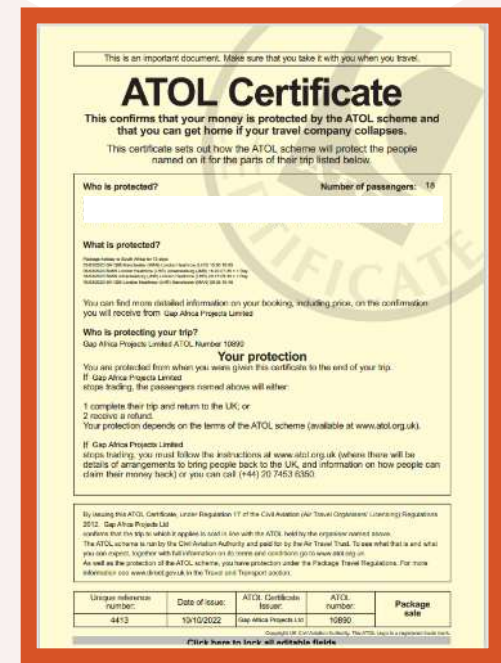
mark.booth@gapafriaprojects.com

+44 (0) 207 193 7819



**CONFIRMATION INVOICE**

Gap Africa Projects  
100, 101  
102, 103  
104, 105  
106, 107  
108, 109  
110, 111  
112, 113  
114, 115  
116, 117  
118, 119  
120, 121  
122, 123  
124, 125  
126, 127  
128, 129  
130, 131  
132, 133  
134, 135  
136, 137  
138, 139  
140, 141  
142, 143  
144, 145  
146, 147  
148, 149  
150, 151  
152, 153  
154, 155  
156, 157  
158, 159  
160, 161  
162, 163  
164, 165  
166, 167  
168, 169  
170, 171  
172, 173  
174, 175  
176, 177  
178, 179  
180, 181  
182, 183  
184, 185  
186, 187  
188, 189  
190, 191  
192, 193  
194, 195  
196, 197  
198, 199  
200, 201  
202, 203  
204, 205  
206, 207  
208, 209  
210, 211  
212, 213  
214, 215  
216, 217  
218, 219  
220, 221  
222, 223  
224, 225  
226, 227  
228, 229  
230, 231  
232, 233  
234, 235  
236, 237  
238, 239  
240, 241  
242, 243  
244, 245  
246, 247  
248, 249  
250, 251  
252, 253  
254, 255  
256, 257  
258, 259  
260, 261  
262, 263  
264, 265  
266, 267  
268, 269  
270, 271  
272, 273  
274, 275  
276, 277  
278, 279  
280, 281  
282, 283  
284, 285  
286, 287  
288, 289  
290, 291  
292, 293  
294, 295  
296, 297  
298, 299  
300, 301  
302, 303  
304, 305  
306, 307  
308, 309  
310, 311  
312, 313  
314, 315  
316, 317  
318, 319  
320, 321  
322, 323  
324, 325  
326, 327  
328, 329  
330, 331  
332, 333  
334, 335  
336, 337  
338, 339  
340, 341  
342, 343  
344, 345  
346, 347  
348, 349  
350, 351  
352, 353  
354, 355  
356, 357  
358, 359  
360, 361  
362, 363  
364, 365  
366, 367  
368, 369  
370, 371  
372, 373  
374, 375  
376, 377  
378, 379  
380, 381  
382, 383  
384, 385  
386, 387  
388, 389  
390, 391  
392, 393  
394, 395  
396, 397  
398, 399  
400, 401  
402, 403  
404, 405  
406, 407  
408, 409  
410, 411  
412, 413  
414, 415  
416, 417  
418, 419  
420, 421  
422, 423  
424, 425  
426, 427  
428, 429  
430, 431  
432, 433  
434, 435  
436, 437  
438, 439  
440, 441  
442, 443  
444, 445  
446, 447  
448, 449  
450, 451  
452, 453  
454, 455  
456, 457  
458, 459  
460, 461  
462, 463  
464, 465  
466, 467  
468, 469  
470, 471  
472, 473  
474, 475  
476, 477  
478, 479  
480, 481  
482, 483  
484, 485  
486, 487  
488, 489  
490, 491  
492, 493  
494, 495  
496, 497  
498, 499  
500, 501  
502, 503  
504, 505  
506, 507  
508, 509  
510, 511  
512, 513  
514, 515  
516, 517  
518, 519  
520, 521  
522, 523  
524, 525  
526, 527  
528, 529  
530, 531  
532, 533  
534, 535  
536, 537  
538, 539  
540, 541  
542, 543  
544, 545  
546, 547  
548, 549  
550, 551  
552, 553  
554, 555  
556, 557  
558, 559  
560, 561  
562, 563  
564, 565  
566, 567  
568, 569  
570, 571  
572, 573  
574, 575  
576, 577  
578, 579  
580, 581  
582, 583  
584, 585  
586, 587  
588, 589  
590, 591  
592, 593  
594, 595  
596, 597  
598, 599  
600, 601  
602, 603  
604, 605  
606, 607  
608, 609  
610, 611  
612, 613  
614, 615  
616, 617  
618, 619  
620, 621  
622, 623  
624, 625  
626, 627  
628, 629  
630, 631  
632, 633  
634, 635  
636, 637  
638, 639  
640, 641  
642, 643  
644, 645  
646, 647  
648, 649  
650, 651  
652, 653  
654, 655  
656, 657  
658, 659  
660, 661  
662, 663  
664, 665  
666, 667  
668, 669  
670, 671  
672, 673  
674, 675  
676, 677  
678, 679  
680, 681  
682, 683  
684, 685  
686, 687  
688, 689  
690, 691  
692, 693  
694, 695  
696, 697  
698, 699  
699, 700



This is an important document. Make sure that you take it with you when you travel.

## ATOL Certificate

This confirms that your money is protected by the ATOL scheme and that you can get home if your travel company collapses.

This certificate sets out how the ATOL scheme will protect the people named on it for the parts of their trip listed below.

Who is protected? **Number of passengers: 19**

What is protected?

You can find more detailed information on your booking, including prices, on the confirmation you will receive from Gap Africa Projects Limited.

Who is protecting your trip?  
Gap Africa Projects Limited ATOL Number 10890

Your protection  
You are protected from when you were given this certificate to the end of your trip.  
If Gap Africa Projects Limited stops trading, the passengers named above will either:  
1 complete their trip and return to the UK, or  
2 receive a refund.  
Your protection depends on the terms of the ATOL scheme (available at [www.atol.org.uk](http://www.atol.org.uk)).

If Gap Africa Projects Limited stops trading, you must follow the instructions at [www.atol.org.uk](http://www.atol.org.uk) (where there will be details of arrangements to bring people back to the UK, and information on how people can claim their money back) or you can call (444) 20 7463 6360.

By issuing this ATOL Certificate, under Regulation 17 of the Civil Aviation (Air Travel Organisations' Licensing) Regulations 2012, Gap Africa Projects Ltd certifies that the trip to which it applies is covered by the ATOL held by the organiser named above.

The ATOL scheme is run by the Civil Aviation Authority and paid for by the Air Travel Trust. To see what that is and what you can expect, together with full information on its terms and conditions go to [www.atol.org.uk](http://www.atol.org.uk). As well as the protection of the ATOL scheme, you have protection under the Package Travel Regulations. For more information see [www.direct.gov.uk](http://www.direct.gov.uk) in the Travel and Transport section.

Unique reference number:	Date of issue:	ATOL Certificate issuer:	ATOL number:	Package sale
4413	19/10/2022	Gap Africa Projects Ltd	10890	

[Click here to view all available flights](#)

# BOOKING YOUR ADVENTURE

AFRICA

## Group Web Page

<https://gapafricaprojects.com/26-4796/>



## Booking Form

<https://gapafricaprojects.com/booking-form-26-4796-bba-shw-bishop-burton-college/>



**BOOKING FORM**

Your Global Adventure Starts here!

Please use the form below to submit your provisional booking to your selected project. You have the option to pay your initial deposit with the submission of your booking form, or we will contact you for payment once your project placement has been secured.

If you'd like to contact us to ask any initial questions or find out more about what project you'd like to go on and when, you can get also get in touch using our short enquiry form, or by calling +44 (0) 207 193 7819.

(NB: Your name should be given as displayed on your passport)

Title \*

Name \*

Date of birth \*

Address \*

## Sustainability & Social, Economic Responsibility

**Local employment from rural communities** – our project partners employ a high percentage of staff from local communities. They advocate training to advance careers in hospitality, wildlife and conservation.

**Low environmental impact camps** – our project bush camps are built with minimal impact on the environment. Resources from the surrounding area are utilised for buildings, water is (where possible) pumped from local river sources and green energy supplies, such as solar are championed.

**Community donations and support** – we encourage all our international study groups to be proactive in donation collections and arrange for excess baggage for said donations to be taken out to South Africa in support of the local communities.

**Move Africa, supporting young females** – 3 in 10 girls in South Africa miss a week of school every month because they cannot afford basic sanitary products. Our project partners work with Move Africa alongside their partner NGOs, to distribute menstrual cups to the local communities and provide education workshops.

**Rhino Art** – Project rhino realises the enormous responsibility the youth have to ensure our wildlife is protected for many generations to come. They ensure they can reach and educate as many kids as possible through Rhino Art, using art workshops to teach about conservation. This initiative is supported by our local project partners.

**Food/crop education** – our project partners encourage food and crop education to rural communities, where cost of living to low income families and distance travelled to obtain basic resources can prove problematic. Projects include community allotments and providing education on best practice for crop rotations, harvest seasons and nutrition.

**Recycling workshops** – Litter, and in particular plastics, is a major issue and threat to the ecosystem in Southern Africa. Rural communities have limited waste removal available and it is therefore a problem escalating at an alarming rate. Recycling workshops are provided through local schools to help educate children on the importance of correctly disposing of litter and recycling plastics.



**GLOBAL** reach. **ADVENTURE** for all. **PROJECTS** to inspire.

Explore our network of Global Adventure Projects:



[GLOBALADVENTUREPROJECTS.COM](http://GLOBALADVENTUREPROJECTS.COM)

