



SPARSHOLT COLLEGE PROJECT PRESENTATION



Sibuya Conservation Experience

AFRICA

GLOBAL reach. **ADVENTURE** for all. **PROJECTS** to inspire.

ABOUT US:

AFRICA

GAP Africa Projects

- We are a specialised travel company that offers academic trips and volunteering opportunities for groups and individual travellers, in a number of locations worldwide
- We pride ourselves on curating experiences which are personalised to your needs and requirements
- Our first project travelled in 2012
- Full ATOL Bonding
- Working with over 55 Colleges and Universities around the UK
- A small dedicated team in the UK and South Africa.





AFRICA

ABOUT SIBUYA GAME RESERVE

Project overview and
location

ABOUT SIBUYA GAME RESERVE

AFRICA

Your Conservation Field Trip Explained

- A unique conservation experience based in South Africa
- Live on a Wild African Game Reserve
- The opportunity to experience hands on wildlife conservation
- Working behind the scenes on a Game Reserve in Africa
- Tailor made projects to suit your needs and interests
- Project Activities include:
 - Pioneering Conservation Research
 - Conservation Activities
 - Adventure and Excitement
- 12 Night project
- The most incredible wildlife experience you will ever have

ABOUT SIBUYA GAME RESERVE

AFRICA

What is a Game Reserve?

- A game reserve is a large area of protected land where wild animals can live safely.
- Wildlife is free roaming throughout the reserve allowing them to thrive in their natural habitat.
- Reserves are either Government Owned (National Parks) or Privately Owned/Managed.
- Most reserves will have physical boundaries i.e. electrified fence line.
- Due to physical boundaries, wildlife must be managed due to restraints on population growth, migration and resources.
- Wildlife is protected but also utilised as a tourist attraction (Eco Tourism) which creates funding for conservation efforts and research.



ABOUT SIBUYA GAME RESERVE

AFRICA

Sibuya Game Reserve Location



ABOUT SIBUYA GAME RESERVE

AFRICA

Home to the **BIG 5**



ANY QUESTIONS?

INFO@GAPAFRICAPROJECTS.COM | +44 (0)207 1937819

PROMO PRESENTATION 7

ABOUT SIBUYA GAME RESERVE

AFRICA

Home to over 45 Species of Mammal



ANY QUESTIONS?

INFO@GAPAFRICAPROJECTS.COM | +44 (0)207 1937819

PROMO PRESENTATION 8



AFRICA

ABOUT THE PROJECT

Our conservation work in more
detail

Your Conservation Programme

- Lion monitoring
- Elephant monitoring
- Rhino monitoring
- Fencing and Alien Plant clearing
- Community Outreach
- Coastal Dunes and Rocky Shores
- Kayaking
- Insect Identification
- Possible veterinary interactions

Presentations and Talks on:

- Lion Conservation
- Elephant Ecology
- Rhino Conservation
- Ornithology (Birds)

ABOUT THE PROJECT

AFRICA

Research – Elephant Monitoring



ANY QUESTIONS?

INFO@GAPAFRICAPROJECTS.COM | +44 (0)207 1937819

PROMO PRESENTATION 12

ABOUT THE PROJECT

AFRICA

Research – Rhino Tracking



ANY QUESTIONS?

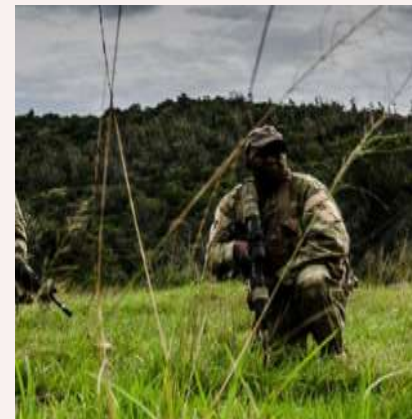
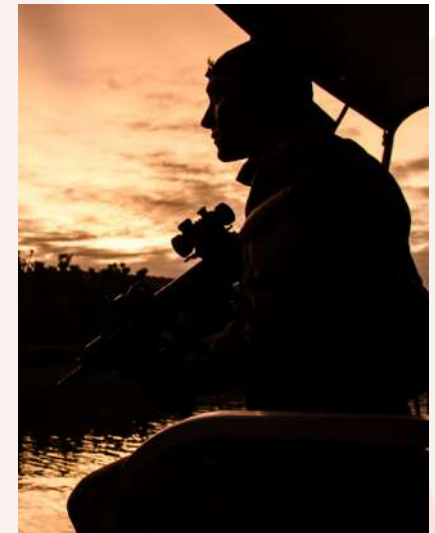
INFO@GAPAFRICAPROJECTS.COM | +44 (0)207 1937819

PROMO PRESENTATION 13

ABOUT THE PROJECT

AFRICA

Anti - Poaching



ANY QUESTIONS?

INFO@GAPAFRICAPROJECTS.COM | +44 (0)207 1937819

PROMO PRESENTATION 14

ABOUT THE PROJECT

AFRICA

Research – Habitat and Prey Selection: Predators



ANY QUESTIONS?

INFO@GAPAFRICAPROJECTS.COM | +44 (0)207 1937819

PROMO PRESENTATION 15

ABOUT THE PROJECT

AFRICA

Reserve Maintenance



ANY QUESTIONS?

INFO@GAPAFRICAPROJECTS.COM | +44 (0)207 1937819

PROMO PRESENTATION 16

ABOUT THE PROJECT

AFRICA

Camera Trap – Research and Study



ABOUT THE PROJECT

AFRICA

Night Game Drives



ANY QUESTIONS?

INFO@GAPAFRICAPROJECTS.COM | +44 (0)207 1937819

PROMO PRESENTATION 18

ABOUT THE PROJECT

AFRICA

Alexandria Dune Trail 7km & Coastal Dunes and Rocky Shores



ANY QUESTIONS?

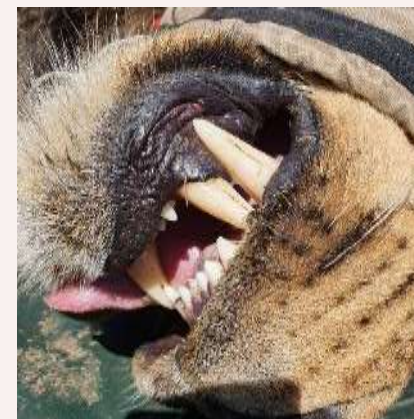
INFO@GAPAFRICAPROJECTS.COM | +44 (0)207 1937819

PROMO PRESENTATION 19

Veterinary Interactions

As part of the program, students will have the unique opportunity to interact with a local wildlife veterinarian who plays an integral role in the overall management of the game reserve.

The highlight of this experience will be the potential for a planned wildlife intervention, where students can observe and, where appropriate, assist in the treatment or management of an animal.



ABOUT THE PROJECT

AFRICA

Possible Veterinary Interactions



ANY QUESTIONS?

INFO@GAPAFRICAPROJECTS.COM | +44 (0)207 1937819

PROMO PRESENTATION 21

ABOUT THE PROJECT

AFRICA

River Activities



ANY QUESTIONS?

INFO@GAPAFRICAPROJECTS.COM | +44 (0)207 1937819

PROMO PRESENTATION 22

ABOUT THE PROJECT

AFRICA

Community Engagement Days



ANY QUESTIONS?

INFO@GAPAFRICAPROJECTS.COM | +44 (0)207 1937819

PROMO PRESENTATION 23

YOUR PROJECT

AFRICA

Sample Itinerary

Week 1

Arrival and settling into accommodation

Welcome presentation, elephant monitoring, elephant conservation talk, camera trap set up

Rhino conservation talk, rhino monitoring

Fence management, alien plant removal, Bird count, ornithology presentation

Community outreach (delivering dog food), town trip

Leisure time/adventure activities

Week 2:

Lion conservation presentation, lion monitoring, buffalo management

Alexandria Dune Trail, rocky shore practical

Boat cruise

Wildlife monitoring drive and picnic

Camera trap collections and farewell dinner





WEEKEND EXCURSIONS

Your free time on project



WEEKEND ACTIVITIES & EXCURSIONS

AFRICA

Activities/Excursions (own cost and optional)

There will be free time/days off, where you'll be able to do some additional activities at your **own cost**. These are **optional**.

All activities are booked and paid for in advance.

More information will be given closer to the time.

Your travel insurance **must** cover you for any additional activities you choose to do.

Any activities booked and paid for locally are not covered under GAPAfrica Project's personal liability insurance.



ANY QUESTIONS?

INFO@GAPAFRICAPROJECTS.COM | +44 (0)207 1937819

PROMO PRESENTATION 26



AFRICA

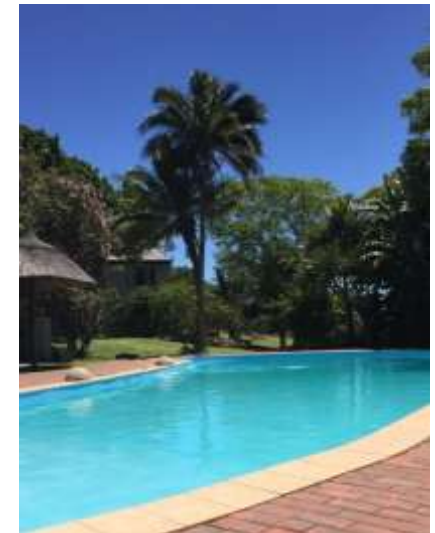
ACCOMMODATION & LIFESTYLE

Life in the African Bush

ACCOMMODATION & LIFESTYLE

AFRICA

Intaka Bird Lodge



ANY QUESTIONS?

INFO@GAPAFRICAPROJECTS.COM | +44 (0)207 1937819

PROMO PRESENTATION 28

ACCOMMODATION

AFRICA

Food at the project

Three meals are provided a day prepared by the kitchen staff.

Breakfasts will consist of toast and cereals; lunch may include pasta, wraps, burgers, stir fry; dinners include meat, fish and vegetables with rice, potatoes or pasta.

Please advise us of any dietary requirements in advance so we can ensure that you are adequately catered for.



ACCOMMODATION & LIFESTYLE

AFRICA

Life on the Reserve



ANY QUESTIONS?

INFO@GAPAFRICAPROJECTS.COM | +44 (0)207 1937819

PROMO PRESENTATION 30

WHY SHOULD I TRAVEL?

AFRICA

What do previous travellers say about the Sibuya Conservation Expedition?



"It was the most **amazing** experience I've ever had."



"I learnt so many new things that have **educated** me **beyond** classroom curriculum"



"There wasn't a single experience that didn't **amaze** me and make me feel **enriched**."

Reference: GAP Africa Projects Post Project Trip Questionnaire 23/24



AFRICA

BOOKING YOUR ADVENTURE

The next steps to the trip of a
lifetime!

WHAT'S INCLUDED

AFRICA

What is included?

- Flights
- Transfers to/from project
- Accommodation
- Three meals per day
- All activities as part of the project
- Airport meet/greet
- 24/7 In country support



NOT Included

- Personal Travel Insurance *
- Meals on travel days – before arriving & after departing from project
- Any activities not specified as part of the project
- Visas/travel documents

* We recommend that you take out personal travel insurance as soon as your booking is confirmed.

THE NEXT STEPS

AFRICA



Project dates & key deadlines

Confirmed trip dates:

Depart UK: 12th April 2026 | Arrive SA: 13th April 2026

Depart SA: 25th April 2026 | Arrive UK: 26th April 2026

Trip cost:

£2735.00* Based on a group of 10 (confirmed once flights have been held)

Key deadlines are:

- Return online booking form by 09/10/2025
- Deposit payment, £300.00 by 18/10/2025
- 50% instalment payment of £1217.50 to be paid by 22/12/2025
- Balance payment of £1217.50 to be paid by 16/02/2026
- 30/03/2026 e-Tickets & final documents will be issued

BOOKING YOUR ADVENTURE

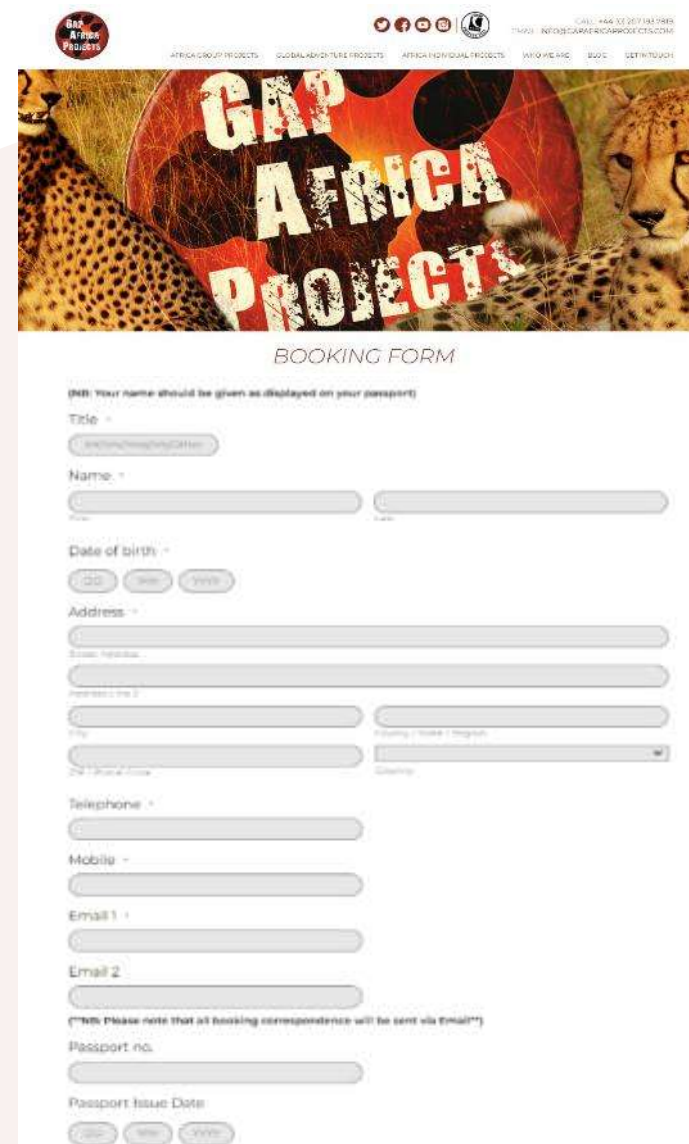
AFRICA

Booking Form

- Please submit by 09/10/2025
- No deposit required at this stage of booking
- Passport fields not mandatory

Key deadlines are:

- Deposit of £300 to confirm placement
- Instalment payment of 50% due 16 weeks before departure
- Balance payment due 8 weeks before departure



The screenshot shows the 'GAP Africa Projects' website header with a cheetah image and the 'BOOKING FORM' title. The form includes fields for Title, Name (First and Last), Date of birth (with day, month, and year dropdowns), Address (Street, Apartment/Flat, City, Region, and Country), Telephone, Mobile, Email 1, Email 2, Passport no., and Passport Issue Date (with day, month, and year dropdowns). A note at the bottom states: '(NB: Please note that all booking correspondence will be sent via Email)'. The website header also includes a 'GAP Africa Projects' logo, social media icons, and navigation links: 'AFRICA GROUP PROJECTS', 'GLOBAL ADVENTURE PROJECTS', 'AFRICA INDIVIDUAL PROJECTS', 'WHO WE ARE', 'BLOG', and 'GET IN TOUCH'.

THE NEXT STEPS

AFRICA

Confirmation Documents

Confirmation documents will be issued and sent directly to you via email.

Please communicate with us with any questions relating to the field trip.

GAP Africa Projects

10 Oct 2022
Ref: 23-ACA-LAL-1212

Dear Chloe,

Thank you for agreeing to book with Gap Africa Projects as part of the Kambel Challenge trip to Zulu Land Conservation Research. Please take the time to look through this document and check that everything is correct.

We have received your deposit payment and your payment to now confirm your place on the trip. The final balance and due date is detailed on your invoice.

Please remember that you can contact me to discuss anything in this document as well as any other aspect of your experience and I am on hand as your personal travel advisor for the entirety of your placement.

Warm regards,
The GAP Africa Team

Passengers Travelling
Miss Chloe
Placement(s)
Zulu Land Conservation Research (06/03/23 – 18/03/23)

Inclusions
Flights, shared road transfers to and from Project, accommodation for duration, all meals and all project activities.

Exclusions
Insurance: any activities undertaken that are not included as part of the project.

Your Flight(s)

Flight No.	Class	Time	From	To
01/03/2023	D	15:00	Manchester (MAN)	
04/1209	A	10:00	London Heathrow (LHR)	
05/03/2023	D	18:20	London Heathrow (LHR)	
0405	A	07:35 + 1 D	Amsterdam (AMS)	
18/03/2023	D	08:15	Amsterdam (AMS)	
0405	A	05:30 + 1 D	London Heathrow (LHR)	
19/03/2023	D	09:35	London Heathrow (LHR)	
041300	A	19:40	Manchester (MAN)	

Your Booking
Travel Advice

Names and spellings
It is essential that you check and confirm all names and spellings on your booking. If there is a mistake this will impact on the trip. Please ensure you check all names and spellings on your booking.

Passport expiry date
Your passport must be valid for at least 10 days before the start of your trip and you must have at least 10 days before the start of your trip.

Passport Copies
It is essential that you have a good quality copy of your passport. Please ensure you have a good quality copy of your passport.

Travel Insurance
It is essential that you have a good quality copy of your passport. Please ensure you have a good quality copy of your passport.

44 (0) 207 193 7819

GAP Africa Projects
20 Rue de la Chapelle
75009 Paris
France

CONFIRMATION INVOICE

Gap Africa Projects
20 Rue de la Chapelle
75009 Paris
France
Tel: +44 (0) 207 193 7819
Email: info@gap-africa.com

Invoice No: 23-ACA-LAL-1212
Invoice Date: 10 Oct 2022
Invoice To: Miss Chloe
Invoice From: Gap Africa Projects

Flight No.	Class	Time	From	To	Fare	Tax	Total
01/03/2023	D	15:00	Manchester (MAN)		120.00	10.00	130.00
04/1209	A	10:00	London Heathrow (LHR)		150.00	10.00	160.00
05/03/2023	D	18:20	London Heathrow (LHR)		120.00	10.00	130.00
0405	A	07:35 + 1 D	Amsterdam (AMS)		180.00	10.00	190.00
18/03/2023	D	08:15	Amsterdam (AMS)		120.00	10.00	130.00
0405	A	05:30 + 1 D	London Heathrow (LHR)		150.00	10.00	160.00
19/03/2023	D	09:35	London Heathrow (LHR)		120.00	10.00	130.00
041300	A	19:40	Manchester (MAN)		120.00	10.00	130.00

Total cost of the arrangement as quoted above
£1,080.00

Payment Details
Bank: Gap Africa Projects Ltd
Account No: 123456789
Sort Code: 12-34-56
Reference: 23-ACA-LAL-1212

This is an important document. Make sure that you take it with you when you travel.

ATOL Certificate

This confirms that your money is protected by the ATOL scheme and that you can get home if your travel company collapses.

This certificate sets out how the ATOL scheme will protect the people named on it for the parts of their trip listed below.

Who is protected? Number of passengers: 10

What is protected?

You can find more detailed information on your booking, including price, on this confirmation you will receive from Gap Africa Projects Limited.

Who is protecting your trip?
Gap Africa Projects Limited ATOL Number 10890

Your protection
You are protected from when you were given this certificate to the end of your trip. If Gap Africa Projects Limited stops trading, the passengers named above will either:

- 1 complete their trip and return to the UK; or
- 2 receive a refund.

Your protection depends on the terms of the ATOL scheme (available at www.atol.org.uk).

If Gap Africa Projects Limited stops trading, you must follow the instructions at www.atol.org.uk (where there will be details of arrangements to bring people back to the UK, and information on how people can claim their money back) or you can call (+44) 20 7463 6360.

By issuing this ATOL Certificate, under Regulation 17 of the Civil Aviation (Air Travel Organisations' Licensing) Regulations 2012, Gap Africa Projects Ltd confirms that the trip to which it applies is sold to you by the ATOL holder, the organiser named above. The ATOL scheme is run by the Civil Aviation Authority and paid for by the Air Travel Trust. To see what that is and what you can expect, together with full information on its terms and conditions go to www.atol.org.uk. As well as the protection of the ATOL scheme, you have protection under the Package Travel Regulations. For more information see www.direct.gov.uk in the Travel and Transport section.

Unique reference number	Date of issue	ATOL Certificate holder	ATOL number	Package sale
4473	10/10/2022	Gap Africa Projects Ltd	10890	

[Click here to view all available flights](#)

BOOKING YOUR ADVENTURE

AFRICA

Group Web Page

<https://gapafricaprojects.com/26-sca-sib-4728-sparsholt-college/>



Booking Form

<https://gapafricaprojects.com/booking-form-26-4728-sca-sib-sparsholt-college/>



BOOKING FORM

Your Global Adventure Starts here!

Please use the form below to submit your provisional booking to your selected project. You have the option to pay your initial deposit with the submission of your booking form, or we will contact you for payment once your project placement has been secured.

If you'd like to contact us to ask any initial questions or find out more about what project you'd like to go on and when, you can get also get in touch using our short inquiry form, or by calling +44 (0) 207 193 7819.

(NB: Your name should be given as displayed on your passport)

Title *

Name *

Date of birth *

Address *

Sustainability & Social, Economic Responsibility

Local employment from rural communities – our project partners employ a high percentage of staff from local communities. They advocate training to advance careers in hospitality, wildlife and conservation.

Low environmental impact camps – our project bush camps are built with minimal impact on the environment. Resources from the surrounding area are utilised for buildings, water is (where possible) pumped from local river sources and green energy supplies, such as solar are championed.

Community donations and support – we encourage all our international study groups to be proactive in donation collections and arrange for excess baggage for said donations to be taken out to South Africa in support of the local communities.

Move Africa, supporting young females – 3 in 10 girls in South Africa miss a week of school every month because they cannot afford basic sanitary products. Our project partners work with Move Africa alongside their partner NGOs, to distribute menstrual cups to the local communities and provide education workshops.

Rhino Art – Project rhino realises the enormous responsibility the youth have to ensure our wildlife is protected for many generations to come. They ensure they can reach and educate as many kids as possible through Rhino Art, using art workshops to teach about conservation. This initiative is supported by our local project partners.

Food/crop education – our project partners encourage food and crop education to rural communities, where cost of living to low income families and distance travelled to obtain basic resources can prove problematic. Projects include community allotments and providing education on best practice for crop rotations, harvest seasons and nutrition.

Recycling workshops – Litter, and in particular plastics, is a major issue and threat to the ecosystem in Southern Africa. Rural communities have limited waste removal available and it is therefore a problem escalating at an alarming rate. Recycling workshops are provided through local schools to help educate children on the importance of correctly disposing of litter and recycling plastics.



GLOBAL reach. **ADVENTURE** for all. **PROJECTS** to inspire.

Explore our network of Global Adventure Projects:



GLOBALADVENTUREPROJECTS.COM

