



ASKHAM BRYAN COLLEGE PROJECT PRESENTATION



KwaZulu-Natal Wildlife and Veterinary Project



GLOBAL reach. **ADVENTURE** for all. **PROJECTS** to inspire.



AFRICA

KWAZULU-NATAL PROJECT OVERVIEW

Overview and location
of the project

ABOUT THE PROJECT

AFRICA

Your Conservation Field Trip Explained

- A unique academic conservation experience based in South Africa
- Live and work in the wild of Africa
- The opportunity to experience hands on wildlife conservation
- Bespoke, tailor made projects to suit research requirements
- Project Activities include:
 - Pioneering Conservation Research
 - Conservation Activities
 - Cultural Enrichment
- Full 12 nights in South Africa
- The most incredible wildlife experience you will ever have

ABOUT THE PROJECT

AFRICA

What is a Game Reserve?

- A game reserve is a large area of protected land where wild animals can live safely.
- Wildlife is free roaming throughout the reserve allowing them to thrive in their natural habitat.
- Reserves are either Government Owned (National Parks) or Privately Owned/Managed.
- Most reserves will have physical boundaries i.e. electrified fence line.
- Due to physical boundaries, wildlife must be managed due to restraints on population growth, migration and resources.
- Wildlife is protected but also utilised as a tourist attraction (Eco Tourism) which creates funding for conservation efforts and research.



ABOUT THE PROJECT

AFRICA

KwaZulu-Natal Wildlife and Veterinary Project- Location





AFRICA

ABOUT THE PROJECT

Our conservation work
in more detail

ABOUT THE PROJECT

AFRICA

KwaZulu-Natal Conservation Research

Our academic team and qualified rangers at the KwaZulu-Natal Conservation Research Project offer a bespoke course to each institution dependent on their own personal objectives and learning needs.

We set out the basis of the trip, comprising of a 12-nights academic module split between the two conservation reserves.

This is not a Safari Holiday!



A full day will be planned but will vary from day to day depending on the days task and research goals.

The project split and duration are as follows:

12 Night Itinerary

6 Nights

Nambiti Big 5 Conservation Research

6 Nights

Zingela Wilderness Conservation and Adventure Activities





AFRICA

6 Nights at Nambiti Game Reserve

A Big Five Game Reserve

ABOUT THE PROJECT

AFRICA

Nambiti Game Reserve (6 Nights)

Nambiti Game Reserve is a magnificent 23,000 acres of unspoiled wilderness boasting the Big 5 and incredible biodiversity (grasslands, riverine bush, savannah and thornveld) offering unprecedented diversity of wildlife.



ABOUT THE PROJECT

AFRICA

Home to over 40 Species of Mammal



ABOUT THE PROJECT

AFRICA

Many Reptile, Insect and Bird Species



ANY QUESTIONS?

INFO@GAPAFRICAPROJECTS.COM | +44 (0)207 1937819

Presentation 11

YOUR PROJECT

AFRICA

Your Conservation Programme – Nambiti

Students will be taught and work alongside the field guides and conservation team. The following examples depict the day-to-day activities that may be undertaken as part of the project at Nambiti.

- Alien Vegetation Control / Reserve Maintenance
- Use of Telemetry Tracking
- Elephant Monitoring / Population Study
- Rhino Monitoring – Awareness
- Anti-poaching talk and fence walk
- Camera Trapping
- Night Drive
- Big Five Bush Walk
- Habitat and Prey Selection of Predators
- Tracks, Signs and Spoor
- Community Development



NAMBITI GAME RESERVE

AFRICA

Nambiti Research Team



ANY QUESTIONS?

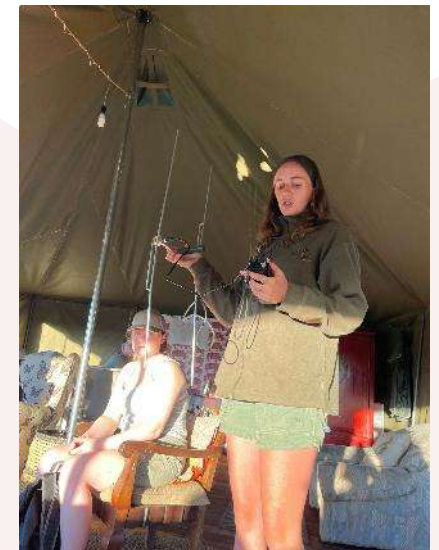
INFO@GAPAFRICAPROJECTS.COM | +44 (0)207 1937819

Presentation 13

NAMBITI GAME RESERVE

AFRICA

Use of Telemetry Tracking



ANY QUESTIONS?

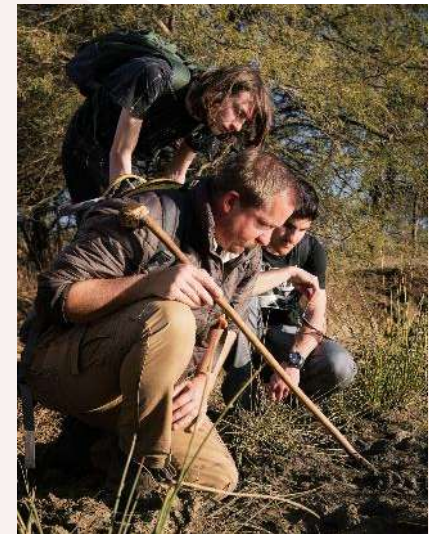
INFO@GAPAFRICAPROJECTS.COM | +44 (0)207 1937819

Presentation 14

NAMBITI GAME RESERVE

AFRICA

Ecology Trails: Tracks, signs and spoors



ANY QUESTIONS?

INFO@GAPAFRICAPROJECTS.COM | +44 (0)207 1937819

Presentation 15

NAMBITI GAME RESERVE

AFRICA

Big Five Bush Walk



ANY QUESTIONS?

INFO@GAPAFRICAPROJECTS.COM | +44 (0)207 1937819

Presentation 16

Research – Habitat and Prey Selection: Predators

Focus on Lion and Cheetah populations:

GPS coordinates from tracking collars

Can be used for movement/spatial/home range analysis



Wildlife Monitoring – Elephant Impact Assessment

Research into impact of elephant on the eco system:

Matriarch collared so GPS range data available

Herd population data

Elephant impact assessments from February '23

Long term ongoing project looking at elephant impact on vegetation



NAMBITI GAME RESERVE

AFRICA

Rhino Monitoring – Awareness and Anti-Poaching



ANY QUESTIONS?

INFO@GAPAFRICAPROJECTS.COM | +44 (0)207 1937819

Presentation 19

NAMBITI GAME RESERVE

AFRICA

Camera Trap – Research and Study

Set out own camera traps

Learn about correct placement, best location etc

Never know what we'll find!



NAMBITI GAME RESERVE

AFRICA

Night Game Drives



ANY QUESTIONS?

INFO@GAPAFRICAPROJECTS.COM | +44 (0)207 1937819

Presentation 21

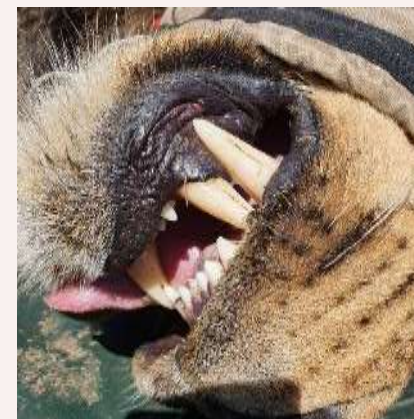
NAMBITI GAME RESERVE

AFRICA

Veterinary Interactions

As part of the program, students will have the unique opportunity to interact with a local wildlife veterinarian who plays an integral role in the overall management of the game reserve.

The highlight of this experience will be the potential for a planned wildlife intervention, where students can observe and, where appropriate, assist in the treatment or management of an animal.



ABOUT THE PROJECT

AFRICA

Dr. Ryan van Deventer – Wildlife Veterinarian with Wildlife Solutions

- Graduated from University of Pretoria in 2000
- Expert in wildlife veterinary medicine, surgery, capture and translocation.
- 13 years working at Wildlife Solutions
- Former Veterinarian at Vet2pet mobile clinic
- Veterinary care on the frontlines of African conservation.
- Passionate about wildlife medicine





AFRICA

6 Nights at Zingela Wildlife Reserve

River Research and Adventure

ABOUT THE PROJECT

AFRICA

Zingela River Safari (6 Nights)

Zingela Wildlife Reserve covers 12,500 acres of predator free, pristine African bushveld. You will have the opportunity to be involved with the research that takes place at the property;. You will also have the chance to participate in a host of activities during your stay.



ANY QUESTIONS?

INFO@GAPAFRICAPROJECTS.COM | +44 (0)207 1937819

Presentation 25

Your Conservation Programme – Zingela

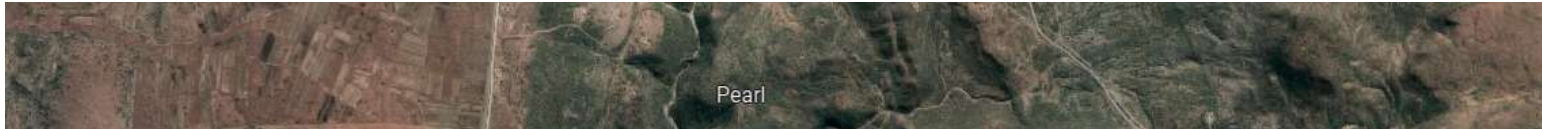
Students will be taught and work alongside the field guides and scientific team. The following examples depict the day-to-day activities that may be undertaken as part of the project at Zingela Reserve.

- Spatial Distribution and Habitat use of species
- Use of Telemetry Tracking
- Giraffe migration and Conservation Project
- Reptile pit fall traps
- Freshwater Ecology
- Mini SASS
- Fish Tagging
- Bird Ringing
- Educational Bush Walks – Ecology & Botany
- Tracks, Signs and Spoor
- Community Development
- Camera Trapping and data processing



NAMBITI TO ZINGELA

AFRICA



ANY QUESTIONS?

INFO@GAPAFRICAPROJECTS.COM | +44 (0)207 1937819

Presentation 27

ZINGELA WILDERNESS RESERVE

AFRICA

Giraffe Migration and Research Project

Population data and database for individuals

Migration and range data through unfenced territories

Diet and vegetation impact assessment

Genetic diversity



ANY QUESTIONS?

INFO@GAPAFRICAPROJECTS.COM | +44 (0)207 1937819

Presentation 28

ZINGELA WILDERNESS RESERVE

AFRICA

River Assessments

Fresh water eel project –
understanding life cycle using GPS
data

Fish tagging and release

Collecting biometric data

SASS – South African Scoring System



ZINGELA WILDERNESS RESERVE

AFRICA

Reptile Research and Trapping

Data collection started in 2022 with annual projects planned

Species frequency

Herpetofauna succession during vegetation rehabilitation

Comparing herpetological diversity



ZINGELA WILDERNESS RESERVE

AFRICA

Educational Bush Walks – Ecology and Botany



ANY QUESTIONS?

INFO@GAPAFRICAPROJECTS.COM | +44 (0)207 1937819

Presentation 31

ZINGELA WILDERNESS RESERVE

AFRICA

Animal Welfare Outreach Program

Participants will join the camp's in-house veterinarian to assist local Zulu farmers in caring for their livestock, primarily goats, but also including dogs, cats, sheep, and cattle, depending on the participants' qualifications and experience.

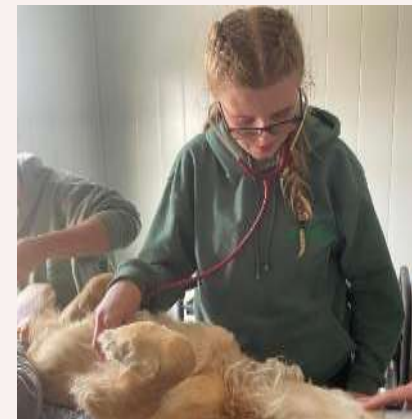
- Vaccinating and Caring for Local Farmers' Goats
- Working with Various Animals at the Homestead
- Animal Welfare Education at Local Schools



ZINGELA WILDERNESS RESERVE

AFRICA

Animal Welfare Outreach Program



ANY QUESTIONS?

INFO@GAPAFRICAPROJECTS.COM | +44 (0)207 1937819

Presentation 33

ABOUT THE PROJECT

AFRICA

Dr. Jenny Ann Preiss – State Veterinarian and Assistant Manager at Zingela

- Graduated from University of Pretoria in 2009
- State Veterinarian (with Kwa-Zulu Natal Department of Agriculture) for 14 years
- Joined Zingela team in 2024 heading up the Zingela Community Extension Project
- Current focus on primary animal health care surrounding Zingela as well as extension on veterinary matters, vaccinating livestock with assistance from GAP Africa Projects



ZINGELA WILDERNESS RESERVE

AFRICA

River Safari – Rafting and Kayaking



ANY QUESTIONS?

INFO@GAPAFRICAPROJECTS.COM | +44 (0)207 1937819

Presentation 35

ZINGELA WILDERNESS RESERVE

AFRICA

Abseiling and Rock Climbing



ANY QUESTIONS?

INFO@GAPAFRICAPROJECTS.COM | +44 (0)207 1937819

Presentation 36



AFRICA

ONLINE NATURE GUIDE COURSE

Bushwise

ONLINE NATURE GUIDE COURSE

AFRICA

Exclusive Bushwise Nature Guide Course

Bushwise is a leading nature guide training provider, and we've partnered with them to offer an exclusive 6-week 'Explore Nature' online course – giving you a real-life insight into the training of a South African Nature Guide.

Connect with the South African bush before you even travel!



Modules include Introduction, Geology, Weather & climate, Astronomy, Ecology, Biomes, Taxonomy, Plants, Arthropods, Fish, Amphibians, Reptiles, Birds, Mammals, Ethology, Conservation management, Historical human habitation.

Your wildlife journey starts here! Build a strong foundation in field guiding, wildlife, and ecology, so that you're fully prepared for the hands-on experience in South Africa.

Course Start Dates:

5 January 2026

30 March 2026

22 June 2026

14 September 2026





AFRICA

ACCOMMODATION & LIFESTYLE

Life in the African Bush

ACCOMMODATION

AFRICA

Game Reserve Camps – Nambiti

In keeping with the Safari Adventure theme, groups are accommodated on the reserve in comfortable safari tents, with communal hot and cold showers and regular flushing toilets. All meals are provided in a communal dining room.



ACCOMMODATION

AFRICA

Game Reserve Camps – Nambiti



ANY QUESTIONS?

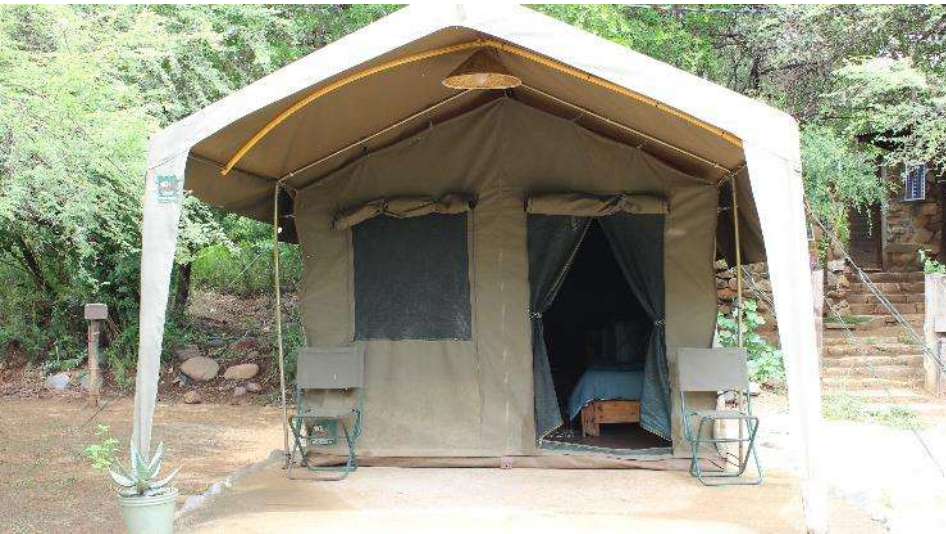
INFO@GAPAFRICAPROJECTS.COM | +44 (0)207 1937819

Presentation 41

ACCOMMODATION

AFRICA

Game Reserve Camps – Zingela



ANY QUESTIONS?

INFO@GAPAFRICAPROJECTS.COM | +44 (0)207 1937819

Presentation 42

ACCOMMODATION

AFRICA

Game Reserve Camps – Zingela



ANY QUESTIONS?

INFO@GAPAFRICAPROJECTS.COM | +44 (0)207 1937819

Presentation 43

ACCOMMODATION

AFRICA

Food at the project

Three meals are provided a day prepared by the kitchen staff.

Breakfasts will consist of toast and cereals; lunch may include pasta, wraps, burgers, stir fry; dinners include meat, fish and vegetables with rice, potatoes or pasta.

On weekends a braai (BBQ) is often organised.

Please advise us of any dietary requirements in advance so we can ensure that you are adequately catered for.



ACCOMMODATION

AFRICA

Food at the project



ANY QUESTIONS?

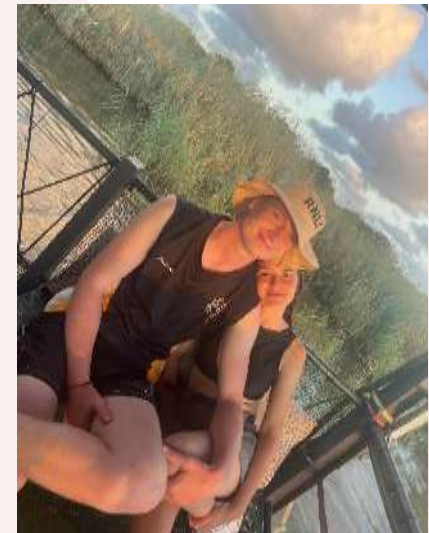
INFO@GAPAFRICAPROJECTS.COM | +44 (0)207 1937819

Presentation 45

ACCOMMODATION & LIFESTYLE

AFRICA

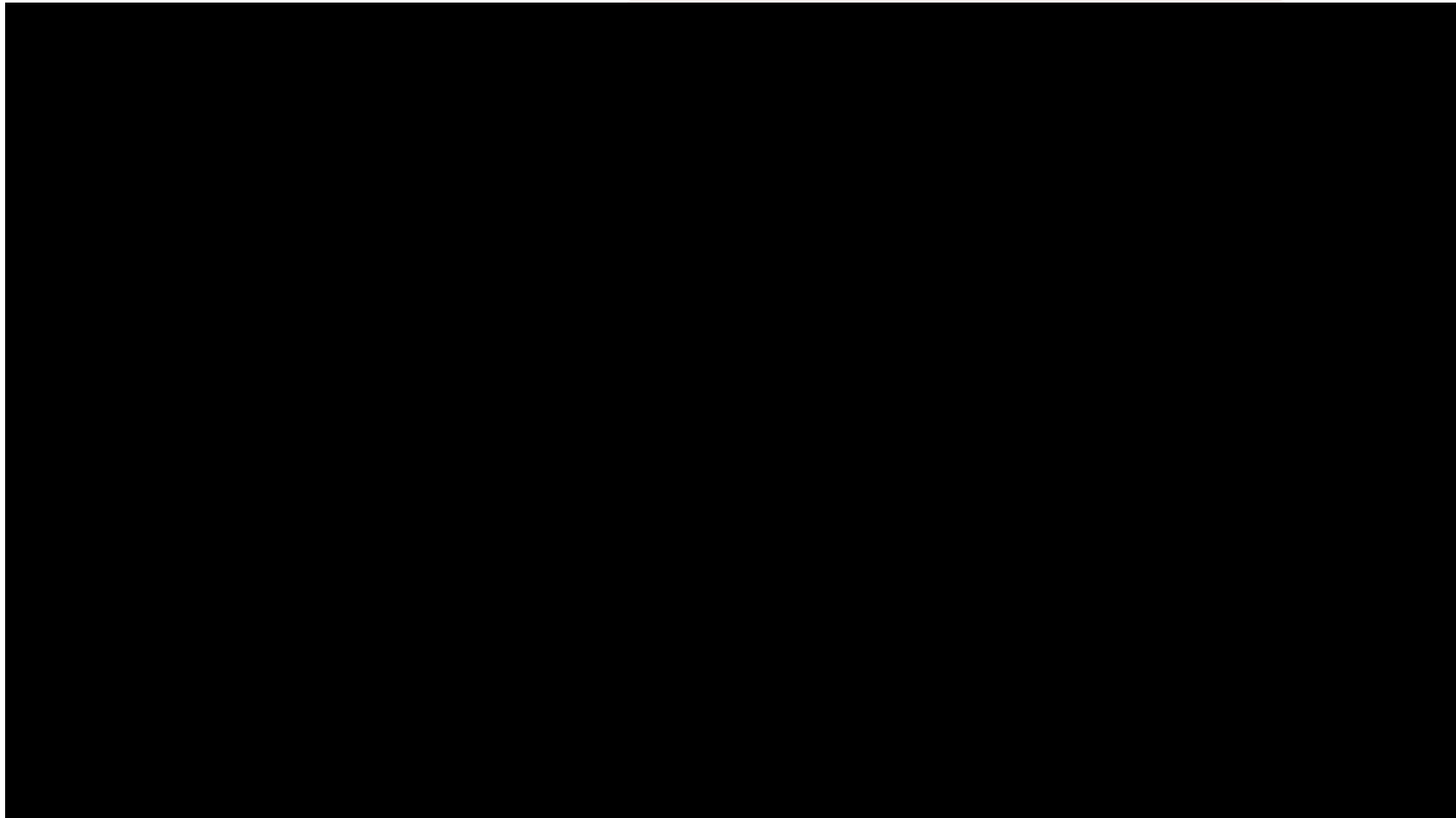
Life on project – Life long memories



ABOUT THE PROJECT

AFRICA

KwaZulu-Natal Conservation Research Video



WHY SHOULD I TRAVEL?

AFRICA

What do previous travellers say about the KwaZulu-Natal Wildlife and Veterinary Project?



"I learnt so many new things that have **educated** me **beyond** classroom curriculum."



"There wasn't a single experience that didn't **amaze** me and make me feel **enriched**."



"It was such an **incredible** **experience** I will never forget."

Reference: GAP Africa Projects Post Project Trip Questionnaire 23/24



AFRICA

THE NEXT STEPS TO YOUR FIELD TRIP

The next steps to the trip of a
lifetime!

WHAT'S INCLUDED

AFRICA

What is Included?

- Flights
- Transfers to/from project
- Accommodation
- Three meals per day
- All activities as part of the project
- Airport meet/greet
- 24/7 In country support



NOT Included

- Personal Travel Insurance *
- Meals on travel days – before arriving & after departing from project
- Any activities not specified as part of the project
- Visas/travel documents
- Tips

* We recommend that you take out personal travel insurance as soon as your booking is confirmed.

THE NEXT STEPS

AFRICA



Project dates & key deadlines

Confirmed travel dates:

Depart UK: 2nd August 2026 | Arrive SA: 3rd August 2026

Depart SA: 15th August 2026 | Arrive UK: 16th August 2026

Trip cost:

£2750.00* Based on a group of 27 (confirmed once flights have been held)

Key deadlines are:

- Return online booking form by 17/10/2025
- Deposit payment, £300.00 by 27/10/2025
- 50% instalment payment of £1225.00 to be paid by 13/04/2026
- Balance payment of £1225.00 to be paid by 08/06/2026
- 20/7/2026 e-Tickets & final documents will be issued

BOOKING YOUR ADVENTURE

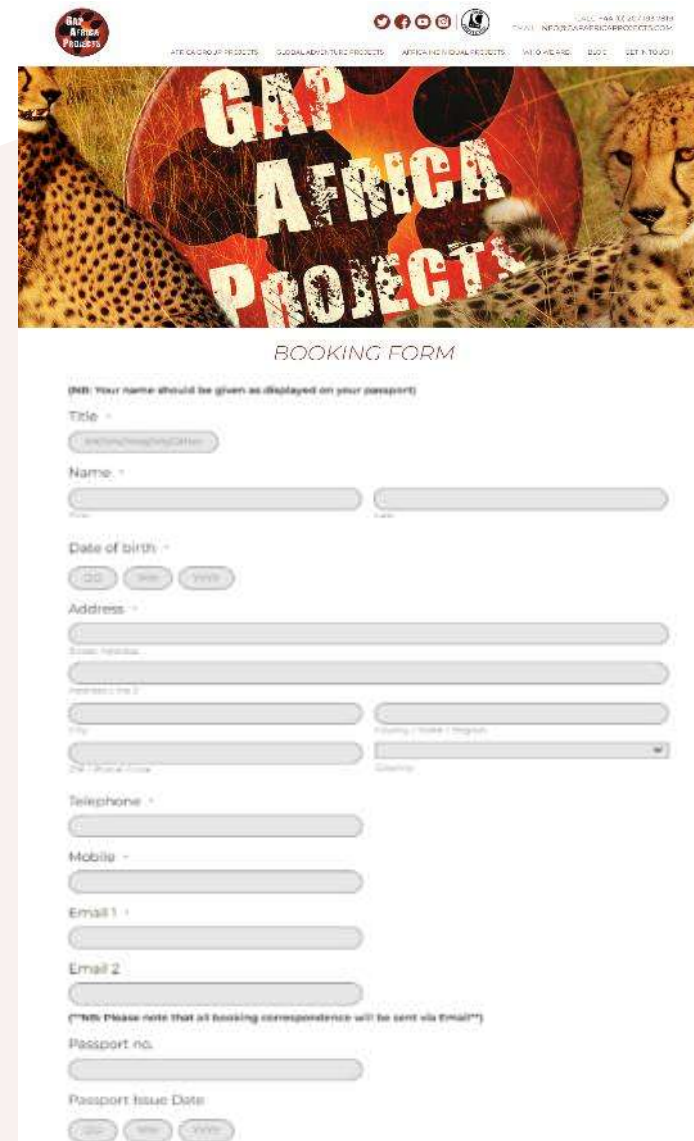
AFRICA

Booking Form

- Please submit by 17/10/2026
- No deposit required at this stage of booking
- Passport fields not mandatory

Key deadlines are:

- Deposit of £300 to confirm placement
- Instalment payment of 50% due 16 weeks before departure
- Balance payment due 8 weeks before departure



The screenshot shows the 'GAP Africa Projects' website header with a navigation bar and a large banner featuring cheetahs and the text 'GAP AFRICA PROJECTS'. Below the banner is the 'BOOKING FORM' section. The form includes fields for Title, Name, Date of birth, Address, Telephone, Mobile, Email 1, Email 2, Passport no., and Passport Issue Date. A note at the bottom states: '(NB: Please note that all booking correspondence will be sent via Email)'. The form is set against a background of a savanna landscape with acacia trees under a sunset sky.

THE NEXT STEPS

AFRICA

Confirmation Documents

Confirmation documents will be issued and sent directly to you via email.

Please communicate with us with any questions relating to the field trip.

Gap Africa Projects

10 Oct 2022
Ref: 23-ACA-LAL-1212

Dear Chloe,

Thank you for agreeing to book with Gap Africa Projects as part of the Kambel Challenge trip to Zulu Land Conservation Research. Please take the time to look through this document and check that everything is correct.

We have received your deposit payment and your payment to now confirm your place on the trip. The final balance and due date is detailed on your invoice.

Please remember that you can contact me to discuss anything in this document as well as any other aspect of your experience and I am on hand as your personal travel advisor for the entirety of your placement.

Warm regards,
The GAP Africa Team

Passengers Travelling
Miss Chloe
Placement(s)
Zulu Land Conservation Research (06/03/23 – 18/03/23)

Inclusions
Flights, shared road transfers to and from Project, accommodation for duration, all meals and all project activities.

Exclusions
Insurance: any activities undertaken that are not included as part of the project.

Your Flight(s)

Flight	Class	Time	From	To
05/03/2023	D	15:00	Manchester (MAN)	
06/03/2023	A	10:00	London Heathrow (LHR)	
05/03/2023	D	18:20	London Heathrow (LHR)	
06/03/2023	A	10:00 + 1 D	London Heathrow (LHR)	
18/03/2023	D	18:15	London Heathrow (LHR)	
19/03/2023	A	10:00 + 1 D	London Heathrow (LHR)	
19/03/2023	D	19:35	London Heathrow (LHR)	
20/03/2023	A	19:40	Manchester (MAN)	

Your Booking
Travel Advice

Names and spellings
It is essential that you check and confirm all names and spellings on your booking. If there is a mistake, this will impact on your passport application. Please ensure you check this carefully and if you have any queries, please contact us.

Passport expiry date
Your passport must be valid for at least 10 days before the start of your trip and you must have at least 10 days before the end of your trip. If you have a passport that expires within 10 days of your trip, you must renew it before you travel. Your passport must be valid for at least 10 days before the end of your trip.

Passport Copies
It is essential that you have a good quality copy of your passport. Please ensure you have a good quality copy of your passport and keep it in a safe place.

Travel Insurance
It is essential that you have the appropriate travel insurance for your trip. Please ensure you have the appropriate travel insurance for your trip. Please ensure you have the appropriate travel insurance for your trip.

Gap Africa Projects
20 Rue de la Chapelle
75009 Paris
France
+44 (0) 207 193 7819
mark.bott@gapafricaprojects.com

CONFIRMATION INVOICE

Gap Africa Projects
20 Rue de la Chapelle
75009 Paris
France
Tel: +44 (0) 207 193 7819
Email: info@gapafricaprojects.com

Invoice No: 23-ACA-LAL-1212
Invoice Date: 10 Oct 2022

Item	Description	Amount	Total
01	Flight (Manchester to London Heathrow)	£1,200.00	£1,200.00
02	Flight (London Heathrow to London Heathrow)	£1,200.00	£1,200.00
03	Flight (London Heathrow to London Heathrow)	£1,200.00	£1,200.00
04	Flight (London Heathrow to London Heathrow)	£1,200.00	£1,200.00
05	Flight (London Heathrow to London Heathrow)	£1,200.00	£1,200.00
06	Flight (London Heathrow to London Heathrow)	£1,200.00	£1,200.00
07	Flight (London Heathrow to London Heathrow)	£1,200.00	£1,200.00
08	Flight (London Heathrow to London Heathrow)	£1,200.00	£1,200.00
09	Flight (London Heathrow to London Heathrow)	£1,200.00	£1,200.00
10	Flight (London Heathrow to London Heathrow)	£1,200.00	£1,200.00
11	Flight (London Heathrow to London Heathrow)	£1,200.00	£1,200.00
12	Flight (London Heathrow to London Heathrow)	£1,200.00	£1,200.00
13	Flight (London Heathrow to London Heathrow)	£1,200.00	£1,200.00
14	Flight (London Heathrow to London Heathrow)	£1,200.00	£1,200.00
15	Flight (London Heathrow to London Heathrow)	£1,200.00	£1,200.00
16	Flight (London Heathrow to London Heathrow)	£1,200.00	£1,200.00
17	Flight (London Heathrow to London Heathrow)	£1,200.00	£1,200.00
18	Flight (London Heathrow to London Heathrow)	£1,200.00	£1,200.00
19	Flight (London Heathrow to London Heathrow)	£1,200.00	£1,200.00
20	Flight (London Heathrow to London Heathrow)	£1,200.00	£1,200.00
21	Flight (London Heathrow to London Heathrow)	£1,200.00	£1,200.00
22	Flight (London Heathrow to London Heathrow)	£1,200.00	£1,200.00
23	Flight (London Heathrow to London Heathrow)	£1,200.00	£1,200.00
24	Flight (London Heathrow to London Heathrow)	£1,200.00	£1,200.00
25	Flight (London Heathrow to London Heathrow)	£1,200.00	£1,200.00
26	Flight (London Heathrow to London Heathrow)	£1,200.00	£1,200.00
27	Flight (London Heathrow to London Heathrow)	£1,200.00	£1,200.00
28	Flight (London Heathrow to London Heathrow)	£1,200.00	£1,200.00
29	Flight (London Heathrow to London Heathrow)	£1,200.00	£1,200.00
30	Flight (London Heathrow to London Heathrow)	£1,200.00	£1,200.00
31	Flight (London Heathrow to London Heathrow)	£1,200.00	£1,200.00
32	Flight (London Heathrow to London Heathrow)	£1,200.00	£1,200.00
33	Flight (London Heathrow to London Heathrow)	£1,200.00	£1,200.00
34	Flight (London Heathrow to London Heathrow)	£1,200.00	£1,200.00
35	Flight (London Heathrow to London Heathrow)	£1,200.00	£1,200.00
36	Flight (London Heathrow to London Heathrow)	£1,200.00	£1,200.00
37	Flight (London Heathrow to London Heathrow)	£1,200.00	£1,200.00
38	Flight (London Heathrow to London Heathrow)	£1,200.00	£1,200.00
39	Flight (London Heathrow to London Heathrow)	£1,200.00	£1,200.00
40	Flight (London Heathrow to London Heathrow)	£1,200.00	£1,200.00
41	Flight (London Heathrow to London Heathrow)	£1,200.00	£1,200.00
42	Flight (London Heathrow to London Heathrow)	£1,200.00	£1,200.00
43	Flight (London Heathrow to London Heathrow)	£1,200.00	£1,200.00
44	Flight (London Heathrow to London Heathrow)	£1,200.00	£1,200.00
45	Flight (London Heathrow to London Heathrow)	£1,200.00	£1,200.00
46	Flight (London Heathrow to London Heathrow)	£1,200.00	£1,200.00
47	Flight (London Heathrow to London Heathrow)	£1,200.00	£1,200.00
48	Flight (London Heathrow to London Heathrow)	£1,200.00	£1,200.00
49	Flight (London Heathrow to London Heathrow)	£1,200.00	£1,200.00
50	Flight (London Heathrow to London Heathrow)	£1,200.00	£1,200.00
51	Flight (London Heathrow to London Heathrow)	£1,200.00	£1,200.00
52	Flight (London Heathrow to London Heathrow)	£1,200.00	£1,200.00
53	Flight (London Heathrow to London Heathrow)	£1,200.00	£1,200.00
54	Flight (London Heathrow to London Heathrow)	£1,200.00	£1,200.00
55	Flight (London Heathrow to London Heathrow)	£1,200.00	£1,200.00
56	Flight (London Heathrow to London Heathrow)	£1,200.00	£1,200.00
57	Flight (London Heathrow to London Heathrow)	£1,200.00	£1,200.00
58	Flight (London Heathrow to London Heathrow)	£1,200.00	£1,200.00
59	Flight (London Heathrow to London Heathrow)	£1,200.00	£1,200.00
60	Flight (London Heathrow to London Heathrow)	£1,200.00	£1,200.00
61	Flight (London Heathrow to London Heathrow)	£1,200.00	£1,200.00
62	Flight (London Heathrow to London Heathrow)	£1,200.00	£1,200.00
63	Flight (London Heathrow to London Heathrow)	£1,200.00	£1,200.00
64	Flight (London Heathrow to London Heathrow)	£1,200.00	£1,200.00
65	Flight (London Heathrow to London Heathrow)	£1,200.00	£1,200.00
66	Flight (London Heathrow to London Heathrow)	£1,200.00	£1,200.00
67	Flight (London Heathrow to London Heathrow)	£1,200.00	£1,200.00
68	Flight (London Heathrow to London Heathrow)	£1,200.00	£1,200.00
69	Flight (London Heathrow to London Heathrow)	£1,200.00	£1,200.00
70	Flight (London Heathrow to London Heathrow)	£1,200.00	£1,200.00
71	Flight (London Heathrow to London Heathrow)	£1,200.00	£1,200.00
72	Flight (London Heathrow to London Heathrow)	£1,200.00	£1,200.00
73	Flight (London Heathrow to London Heathrow)	£1,200.00	£1,200.00
74	Flight (London Heathrow to London Heathrow)	£1,200.00	£1,200.00
75	Flight (London Heathrow to London Heathrow)	£1,200.00	£1,200.00
76	Flight (London Heathrow to London Heathrow)	£1,200.00	£1,200.00
77	Flight (London Heathrow to London Heathrow)	£1,200.00	£1,200.00
78	Flight (London Heathrow to London Heathrow)	£1,200.00	£1,200.00
79	Flight (London Heathrow to London Heathrow)	£1,200.00	£1,200.00
80	Flight (London Heathrow to London Heathrow)	£1,200.00	£1,200.00
81	Flight (London Heathrow to London Heathrow)	£1,200.00	£1,200.00
82	Flight (London Heathrow to London Heathrow)	£1,200.00	£1,200.00
83	Flight (London Heathrow to London Heathrow)	£1,200.00	£1,200.00
84	Flight (London Heathrow to London Heathrow)	£1,200.00	£1,200.00
85	Flight (London Heathrow to London Heathrow)	£1,200.00	£1,200.00
86	Flight (London Heathrow to London Heathrow)	£1,200.00	£1,200.00
87	Flight (London Heathrow to London Heathrow)	£1,200.00	£1,200.00
88	Flight (London Heathrow to London Heathrow)	£1,200.00	£1,200.00
89	Flight (London Heathrow to London Heathrow)	£1,200.00	£1,200.00
90	Flight (London Heathrow to London Heathrow)	£1,200.00	£1,200.00
91	Flight (London Heathrow to London Heathrow)	£1,200.00	£1,200.00
92	Flight (London Heathrow to London Heathrow)	£1,200.00	£1,200.00
93	Flight (London Heathrow to London Heathrow)	£1,200.00	£1,200.00
94	Flight (London Heathrow to London Heathrow)	£1,200.00	£1,200.00
95	Flight (London Heathrow to London Heathrow)	£1,200.00	£1,200.00
96	Flight (London Heathrow to London Heathrow)	£1,200.00	£1,200.00
97	Flight (London Heathrow to London Heathrow)	£1,200.00	£1,200.00
98	Flight (London Heathrow to London Heathrow)	£1,200.00	£1,200.00
99	Flight (London Heathrow to London Heathrow)	£1,200.00	£1,200.00
100	Flight (London Heathrow to London Heathrow)	£1,200.00	£1,200.00

Gap Africa Projects
20 Rue de la Chapelle
75009 Paris
France
Tel: +44 (0) 207 193 7819
Email: info@gapafricaprojects.com

This is an important document. Make sure that you take it with you when you travel.

ATOL Certificate

This confirms that your money is protected by the ATOL scheme and that you can get home if your travel company collapses.

This certificate sets out how the ATOL scheme will protect the people named on it for the parts of their trip listed below.

Who is protected? Number of passengers: 18

What is protected?

You can find more detailed information on your booking, including price, on this confirmation you will receive from Gap Africa Projects Limited.

Who is protecting your trip?
Gap Africa Projects Limited ATOL Number 10890

Your protection
You are protected from when you were given this certificate to the end of your trip. If Gap Africa Projects Limited stops trading, the passengers named above will either:

- 1 complete their trip and return to the UK; or
- 2 receive a refund.

Your protection depends on the terms of the ATOL scheme (available at www.atol.org.uk).

If Gap Africa Projects Limited stops trading, you must follow the instructions at www.atol.org.uk (where there will be details of arrangements to bring people back to the UK, and information on how people can claim their money back) or you can call (+44) 20 7463 6360.

By issuing this ATOL Certificate, under Regulation 17 of the Civil Aviation (Air Travel Organisations' Licensing) Regulations 2012, Gap Africa Projects Limited confirms that the trip is valid and is protected by the ATOL scheme. The ATOL scheme is run by the Civil Aviation Authority and is paid for by the Air Travel Trust. To see what that is and what you can expect, together with full information on its terms and conditions go to www.atol.org.uk. As well as the protection of the ATOL scheme, you have protection under the Package Travel Regulations. For more information see www.direct.gov.uk in the Travel and Transport section.

Unique reference number	Date of issue	ATOL Certificate issuer	ATOL number	Package sale
4473	10/10/2022	Gap Africa Projects Ltd	10890	

[Click here to view all available flights](#)

BOOKING YOUR ADVENTURE

AFRICA

Group Web Page

<https://gapafricaprojects.com/26-4704/>



Booking Form

<https://gapafricaprojects.com/booking-form-26-4704-aby-askham-bryan-college/>



BOOKING FORM

Your Global Adventure Starts here!

Please use the form below to submit your provisional booking to your selected project. You have the option to pay your initial deposit with the submission of your booking form, or we will contact you for payment once your project placement has been secured.

If you'd like to contact us to ask any initial questions or find out more about what project you'd like to go on and when, you can get also get in touch using our short inquiry form, or by calling +44 (0) 207 193 7819.

(NB: Your name should be given as displayed on your passport)

Title *

Name *

Date of birth *

Address *

Sustainability & Social, Economic Responsibility

Local employment from rural communities – our project partners employ a high percentage of staff from local communities. They advocate training to advance careers in hospitality, wildlife and conservation.

Low environmental impact camps – our project bush camps are built with minimal impact on the environment. Resources from the surrounding area are utilised for buildings, water is (where possible) pumped from local river sources and green energy supplies, such as solar are championed.

Community donations and support – we encourage all our international study groups to be proactive in donation collections and arrange for excess baggage for said donations to be taken out to South Africa in support of the local communities.

Move Africa, supporting young females – 3 in 10 girls in South Africa miss a week of school every month because they cannot afford basic sanitary products. Our project partners work with Move Africa alongside their partner NGOs, to distribute menstrual cups to the local communities and provide education workshops.

Rhino Art – Project rhino realises the enormous responsibility the youth have to ensure our wildlife is protected for many generations to come. They ensure they can reach and educate as many kids as possible through Rhino Art, using art workshops to teach about conservation. This initiative is supported by our local project partners.

Food/crop education – our project partners encourage food and crop education to rural communities, where cost of living to low income families and distance travelled to obtain basic resources can prove problematic. Projects include community allotments and providing education on best practice for crop rotations, harvest seasons and nutrition.

Recycling workshops – Litter, and in particular plastics, is a major issue and threat to the ecosystem in Southern Africa. Rural communities have limited waste removal available and it is therefore a problem escalating at an alarming rate. Recycling workshops are provided through local schools to help educate children on the importance of correctly disposing of litter and recycling plastics.



GLOBAL reach. **ADVENTURE** for all. **PROJECTS** to inspire.

Explore our network of Global Adventure Projects:



GLOBALADVENTUREPROJECTS.COM

