



MYERSCOUGH COLLEGE PROJECT PRESENTATION



Waterberg Equine and Wildlife Project



GLOBAL reach. **ADVENTURE** for all. **PROJECTS** to inspire.

ABOUT US:

AFRICA

GAP Africa Projects

- We are a specialised travel company that offers academic trips and volunteering opportunities for groups and individual travellers, in a number of locations worldwide
- We pride ourselves on curating experiences which are personalised to your needs and requirements
- Our first project travelled in 2012
- Full ATOL Bonding
- Working with over 55 Colleges and Universities around the UK
- A small dedicated team in the UK and South Africa





AFRICA

ABOUT THE WATERBERG

Our Equine and Wildlife conservation work in more detail



ABOUT WATERBERG HORSE TRAILS

AFRICA

Your Equine Project Explained

- A unique equine and wildlife project based in South Africa
- Live and work on a Game Reserve that specialises in Horseback safaris
- Tailor-made projects to suit your needs and interests
- Project activities include
 - Equine Welfare
 - Equine Management
 - Conservation activities
 - Community Development
- Dedicated horses, staff, and vehicles
- 10-night experience
- The most incredible mix of equine and wildlife experience you will ever have

ABOUT WATERBERG HORSE TRAILS

AFRICA

Waterberg Equine Project

Our team and qualified rangers at the Waterberg Equine Project offer a bespoke course to each institution dependent on their own personal objectives and learning needs.

We set out the basis of the trip, comprising of a 10-night project staying at amazing Waterberg Cottages.

A full day will be planned but will vary from day to day depending on the day's task and goals.



ABOUT WATERBERG HORSE TRAILS

AFRICA

What is a Game Reserve

- A game reserve is a large area of protected land where wild animals can live safely.
- Wildlife is free roaming throughout the reserve allowing them to thrive in their natural habitat.
- Reserves are either Government Owned (National Parks) or Privately Owned/Managed.
- Most reserves will have physical boundaries i.e. electrified fence line.
- Due to physical boundaries, wildlife must be managed due to restraints on population growth, migration and resources.
- Wildlife is protected but also utilised as a tourist attraction (Eco Tourism) which creates funding for conservation efforts and research.



ABOUT WATERBERG

AFRICA

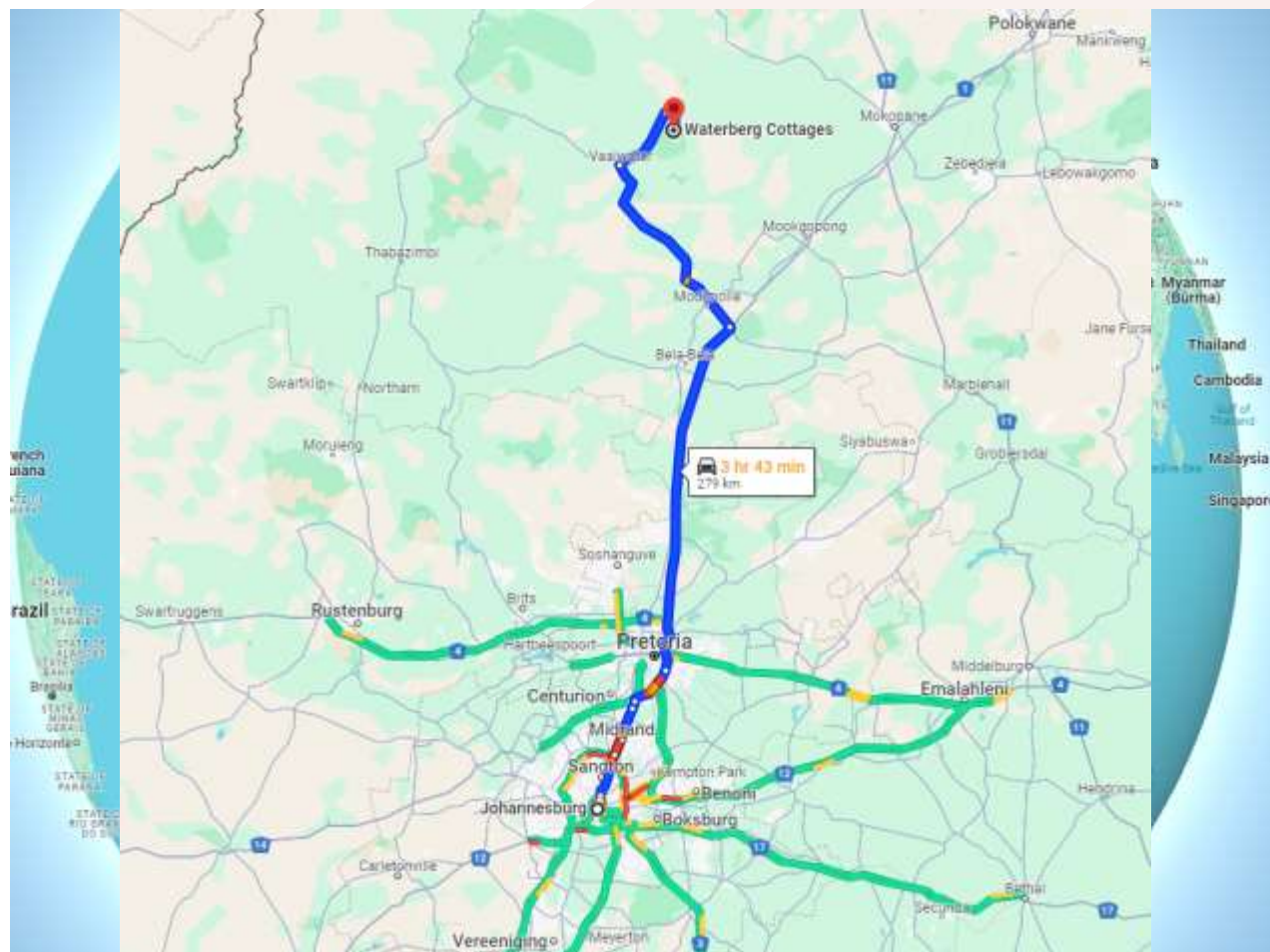
Waterberg Horse Trials – Location



ABOUT WATERBERG HORSE TRAILS

AFRICA

The Waterberg Cottage Location





AFRICA

ABOUT THE WATERBERG EQUINE & WILDLIFE PROJECT

Our Equine and Wildlife work in
more detail

YOUR PROJECT

AFRICA

Waterberg Equine and Wildlife Project

Equine activities

- Grooming
- Feeding
- Outrides (game monitoring on horseback)
- Herding (bringing horses in and moving camps)
- Basic farriery and trimming of hooves
- Lunging
- Horse desensitising
- Poisonous plant removal
- Collecting wire and dangerous objects in bush
- Filling dangerous holes
- Basic veterinary care
 - Wound treatments
 - Preventative treatments
 - Injections
 - Deworming
 - Weekly tick dipping of horses

YOUR PROJECT



Horseback Safari



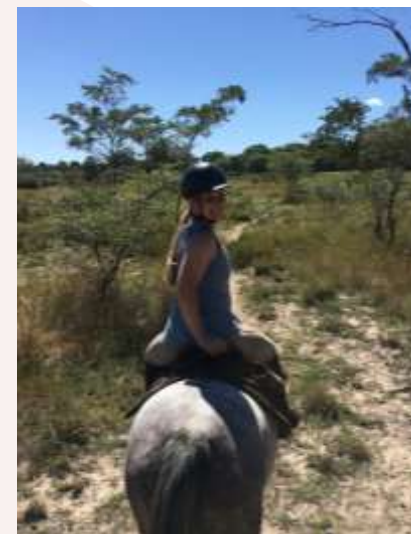
ANY QUESTIONS?

INFO@GAPAFRICAPROJECTS.COM | +44 (0)207 1937819

YOUR PROJECT

AFRICA

Outrides (game monitoring on horseback)



ANY QUESTIONS?

INFO@GAPAFRICAPROJECTS.COM | +44 (0)207 1937819

INFORMATION PACK 12

YOUR PROJECT

AFRICA

Outrides – Game Counts



ANY QUESTIONS?

INFO@GAPAFRICAPROJECTS.COM | +44 (0)207 1937819

INFORMATION PACK 13

YOUR PROJECT

AFRICA

Waterberg Equine and Wildlife



ANY QUESTIONS?

INFO@GAPAFRICAPROJECTS.COM | +44 (0)207 1937819

INFORMATION PACK 14

YOUR PROJECT

AFRICA

Waterberg Equine and Wildlife



YOUR PROJECT

AFRICA

Bush Clearing, Natural Horsemanship



ANY QUESTIONS?

INFO@GAPAFRICAPROJECTS.COM | +44 (0)207 1937819

INFORMATION PACK 16

YOUR PROJECT

AFRICA

Community Development



ANY QUESTIONS?

INFO@GAPAFRICAPROJECTS.COM | +44 (0)207 1937819

INFORMATION PACK 17

YOUR PROJECT

AFRICA

Community Development



ANY QUESTIONS?

INFO@GAPAFRICAPROJECTS.COM | +44 (0)207 1937819

INFORMATION PACK 18

Wildlife Conservation Activities

- Interpretive bush walks and tracking
- Game (wildlife) drives
- Full Day Big 5 Game Drive
- Aardvark Safari
- Telemetry Skills
- Bush Walks
- Spoor and Dung Tracking



Other Activities

- Astronomy show
- Evening Sundowners



YOUR PROJECT

AFRICA

Wildlife Conservation Activities



ANY QUESTIONS?

INFO@GAPAFRICAPROJECTS.COM | +44 (0)207 1937819

INFORMATION PACK 20

YOUR PROJECT

AFRICA

Wildlife Conservation Activities



ANY QUESTIONS?

INFO@GAPAFRICAPROJECTS.COM | +44 (0)207 1937819

INFORMATION PACK 21

YOUR PROJECT

AFRICA

Big Five Game Reserve



ANY QUESTIONS?

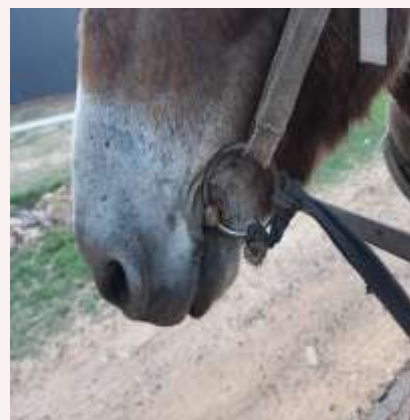
INFO@GAPAFRICAPROJECTS.COM | +44 (0)207 1937819

INFORMATION PACK 22

ABOUT THE PROJECT

AFRICA

Community – GAP Donation Bags



ANY QUESTIONS?

INFO@GAPAFRICAPROJECTS.COM | +44 (0)207 1937819

INFORMATION PACK 23



AFRICA

ACCOMMODATION & LIFESTYLE

Accommodation



ACCOMMODATION & LIFESTYLE

AFRICA

Accommodation

The group will be accommodated in the beautiful historic thatch cottages surrounded by gardens, horses, animals and views of the bushveld.



ACCOMMODATION & LIFESTYLE

AFRICA

Meals

All meals are provided. Hosts create wholesome home-cooked style meals made with local ingredients and cater for all dietary requirements.

Dinners are catered and served to the students in the evenings, lunches will be made by the group in teams and breakfast will be self-service.

There will be opportunities to taste local dishes including the traditional 'braai' (BBQ) and to enjoy meals in unique outdoor locations.



ACCOMMODATION AND LIFESTYLE

AFRICA

Life on the farm



ANY QUESTIONS?

INFO@GAPAFRICAPROJECTS.COM | +44 (0)207 1937819

INFORMATION PACK 27

ACCOMMODATION AND LIFESTYLE

AFRICA

Life on the farm



ANY QUESTIONS?

INFO@GAPAFRICAPROJECTS.COM | +44 (0)207 1937819

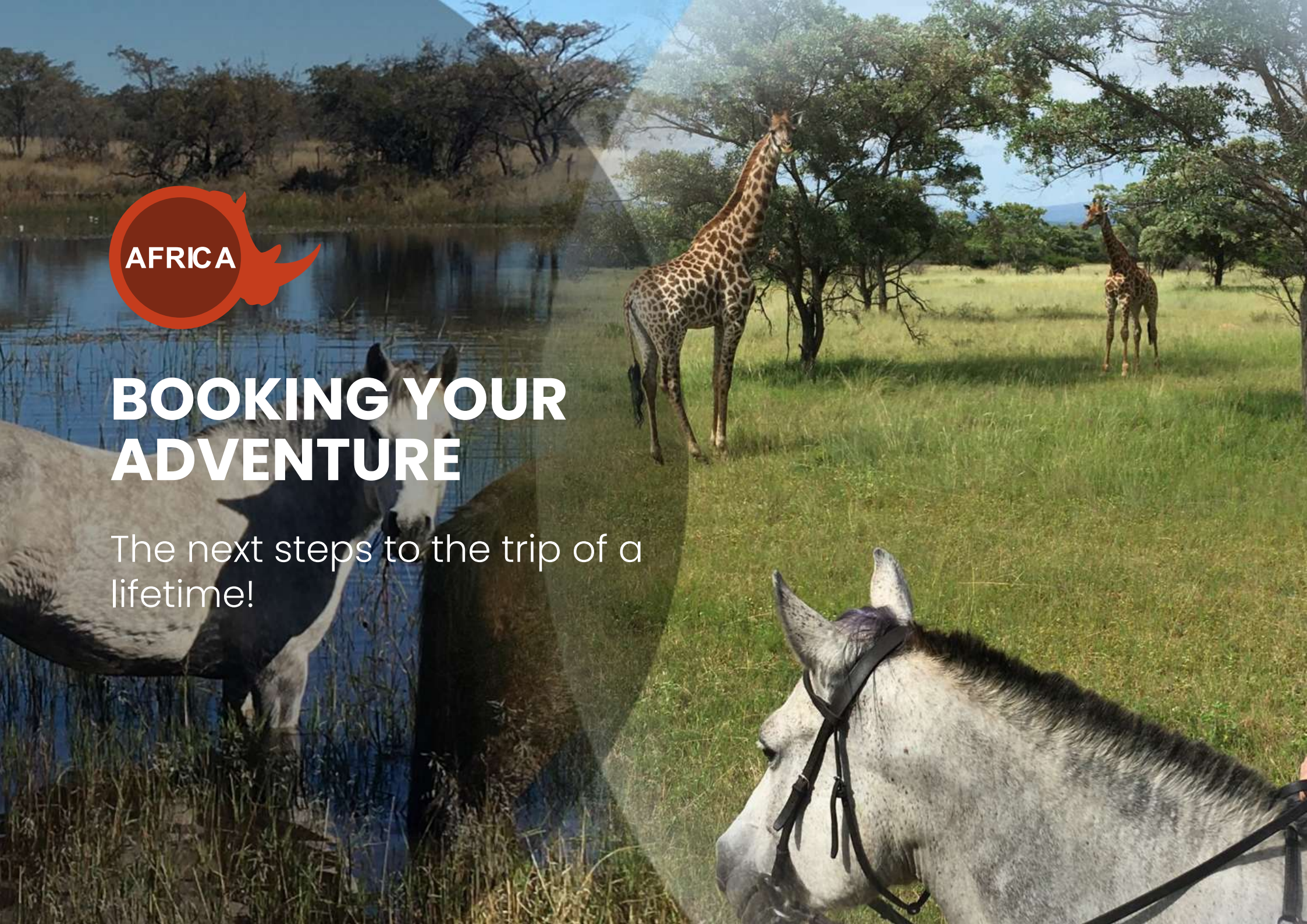
INFORMATION PACK 28



AFRICA

BOOKING YOUR ADVENTURE

The next steps to the trip of a lifetime!



WHY SHOULD I TRAVEL?

What do previous travellers say about the Equine and Wildlife Project?

AFRICA



"This trip gave me a **greater insight** into what we can actually do as veterinary nurses."



"Horse riding in the game reserve was a **phenomenal experience.**"



"It has inspired me to look into **volunteering opportunities.**"

Reference: GAP Africa Projects Post Project Trip Questionnaire 23/24

WHY SHOULD I TRAVEL?

What do previous travellers say about the Equine and Wildlife Project?

AFRICA



“Getting hands on in the reserve helped develop my knowledge about animal behaviour.”



“Assisting with the fitting of donkey harnesses was really rewarding.”



“We got the opportunity to take part in talks and visit the Rhino orphanage, it was incredible.”

Reference: GAP Africa Projects Post Project Trip Questionnaire 23/24

WHAT'S INCLUDED

AFRICA

What is Included?

- Flights
- Transfer to/from project
- Accommodation
- Three meals per day
- All activities as part of the project
- Airport meet/greet
- 24 hour in country support



NOT Included

- Personal Travel Insurance *
- Meals on travel days - before arriving & after departing from the project
- Any activities not specified as part of the project
- Visas/travel documents
- Tips
- Riding hat, boots, gloves, body protector – see kit list

* We recommend you take out travel insurance as soon as your booking is confirmed

THE NEXT STEPS

AFRICA



Project dates & key deadlines

Confirmed travel dates:

Depart UK: 23rd August 2026 | Arrive SA: 24th August 2026

Depart SA: 3rd September 2026 | Arrive UK: 4th September 2026

Trip cost:

£2940.00* Based on a group of 8 (confirmed once flights have been held)

Key deadlines are:

- Return online booking form by 03/10/2025
- Deposit payment, £300.00 by 17/10/2025
- 50% instalment payment of £1320.00 to be paid by 04/05/2026
- Balance payment of £1320.00 to be paid by 29/06/2026
- 10/08/2026 e-Tickets & final documents will be issued

BOOKING YOUR ADVENTURE

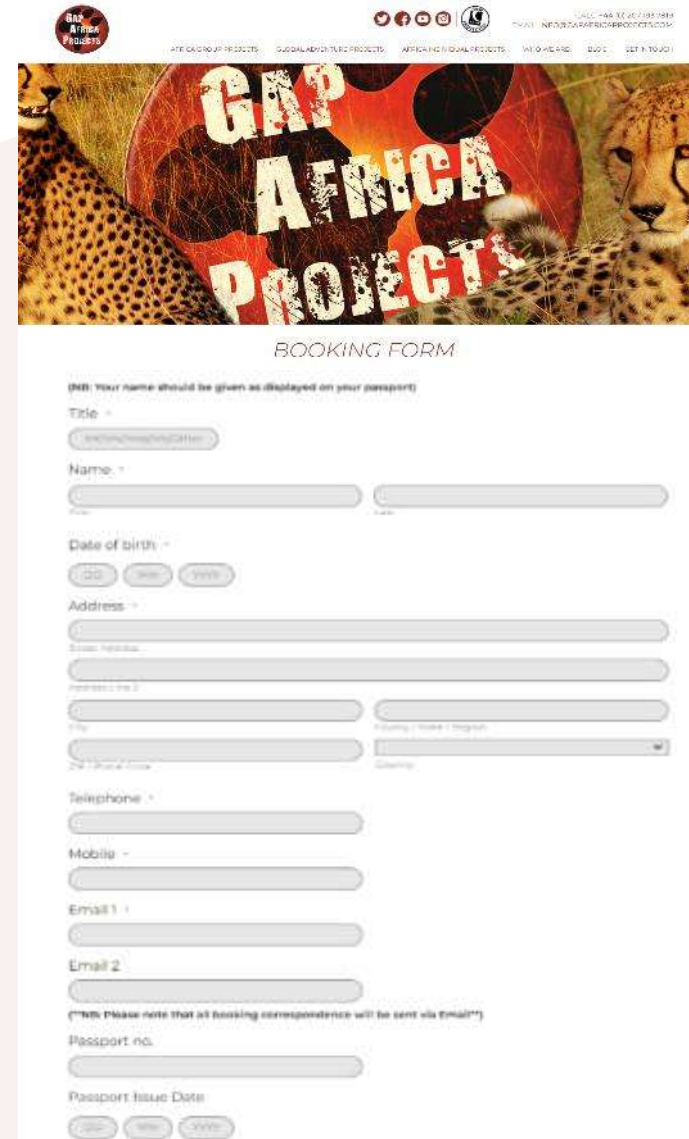
AFRICA

Booking Form

- Please submit by 03/10/2025
- No deposit required at this stage of booking
- Passport fields not mandatory

Key deadlines are:

- Deposit of £300 to confirm placement
- Instalment payment of 50% due 16 weeks before departure
- Balance payment due 8 weeks before departure



The image shows a screenshot of the GAP Africa Projects website's booking form. At the top, there is a navigation bar with the GAP Africa Projects logo and social media icons. Below the navigation bar is a banner image featuring two cheetahs and a red circular graphic with the text 'GAP AFRICA PROJECTS'. The main heading of the form is 'BOOKING FORM'. The form includes several fields: 'Title', 'Name', 'Date of birth', 'Address', 'Telephone', 'Mobile', 'Email 1', 'Email 2', 'Passport no.', and 'Passport Issue Date'. There are also dropdown menus for 'Country' and 'Region'. A note at the bottom of the form states: '(NB: Please note that all booking correspondence will be sent via Email)'. The form is set against a light background with a large, faint circular graphic behind it.

THE NEXT STEPS



Confirmation Documents

Confirmation documents will be issued and sent directly to you via email.

Please communicate with us with any questions relating to the field trip.

Your Booking

Travel Advice

10 Oct 2022
Ref: Z3-REA-LALZ/CLL

Names and spellings
Your passport must be valid for at least 10 days before the intended return date to your country of origin. If you have a passport which expires 10 days before departure, you should renew your passport to your destination your return.

Passport expiry date
Your passport must be valid for at least 10 days before the intended return date to your country of origin. If you have a passport which expires 10 days before departure, you should renew your passport to your destination your return.

Passport Copies
It is recommended that you take good copies of your passport, visa and any other documents you are taking with you.

Travel insurance
It is advised that you take the appropriate level of cover for your trip. It is recommended that you take out travel insurance before you depart. Please contact your insurance provider for more information.

Passengers Travelling
Miss Chloe
Placement(s)
Zulu Land Conservation Research [06/03/23 - 18/03/23]

Inclusions
Flights, shared road transfers to and from Project, accommodation for duration, all meals and all project activities.

Exclusions
Insurance: any activities undertaken that are not included in part of the project.

Your Flight(s)

Flight	Class	Depart	Arrive	From	To
05/03/2023: 041209	D	15:00	04:30	Manchester (MAN)	London Heathrow (LHR)
05/03/2023: 0402	A	10:25	11:00	London Heathrow (LHR)	Johnannesburg (JNB)
18/03/2023: 0403	D	10:15	10:50	Johnannesburg (JNB)	London Heathrow (LHR)
19/03/2023: 041300	D	09:35	13:40	London Heathrow (LHR)	Manchester (MAN)

mark.booth@gap-africa-projects.com

CONFIRMATION INVOICE

Gap Africa Projects
100, 101, 102, 103, 104, 105, 106, 107, 108, 109, 110, 111, 112, 113, 114, 115, 116, 117, 118, 119, 120, 121, 122, 123, 124, 125, 126, 127, 128, 129, 130, 131, 132, 133, 134, 135, 136, 137, 138, 139, 140, 141, 142, 143, 144, 145, 146, 147, 148, 149, 150, 151, 152, 153, 154, 155, 156, 157, 158, 159, 160, 161, 162, 163, 164, 165, 166, 167, 168, 169, 170, 171, 172, 173, 174, 175, 176, 177, 178, 179, 180, 181, 182, 183, 184, 185, 186, 187, 188, 189, 190, 191, 192, 193, 194, 195, 196, 197, 198, 199, 200, 201, 202, 203, 204, 205, 206, 207, 208, 209, 210, 211, 212, 213, 214, 215, 216, 217, 218, 219, 220, 221, 222, 223, 224, 225, 226, 227, 228, 229, 230, 231, 232, 233, 234, 235, 236, 237, 238, 239, 240, 241, 242, 243, 244, 245, 246, 247, 248, 249, 250, 251, 252, 253, 254, 255, 256, 257, 258, 259, 260, 261, 262, 263, 264, 265, 266, 267, 268, 269, 270, 271, 272, 273, 274, 275, 276, 277, 278, 279, 280, 281, 282, 283, 284, 285, 286, 287, 288, 289, 290, 291, 292, 293, 294, 295, 296, 297, 298, 299, 300, 301, 302, 303, 304, 305, 306, 307, 308, 309, 310, 311, 312, 313, 314, 315, 316, 317, 318, 319, 320, 321, 322, 323, 324, 325, 326, 327, 328, 329, 330, 331, 332, 333, 334, 335, 336, 337, 338, 339, 340, 341, 342, 343, 344, 345, 346, 347, 348, 349, 350, 351, 352, 353, 354, 355, 356, 357, 358, 359, 360, 361, 362, 363, 364, 365, 366, 367, 368, 369, 370, 371, 372, 373, 374, 375, 376, 377, 378, 379, 380, 381, 382, 383, 384, 385, 386, 387, 388, 389, 390, 391, 392, 393, 394, 395, 396, 397, 398, 399, 400, 401, 402, 403, 404, 405, 406, 407, 408, 409, 410, 411, 412, 413, 414, 415, 416, 417, 418, 419, 420, 421, 422, 423, 424, 425, 426, 427, 428, 429, 430, 431, 432, 433, 434, 435, 436, 437, 438, 439, 440, 441, 442, 443, 444, 445, 446, 447, 448, 449, 450, 451, 452, 453, 454, 455, 456, 457, 458, 459, 460, 461, 462, 463, 464, 465, 466, 467, 468, 469, 470, 471, 472, 473, 474, 475, 476, 477, 478, 479, 480, 481, 482, 483, 484, 485, 486, 487, 488, 489, 490, 491, 492, 493, 494, 495, 496, 497, 498, 499, 500, 501, 502, 503, 504, 505, 506, 507, 508, 509, 510, 511, 512, 513, 514, 515, 516, 517, 518, 519, 520, 521, 522, 523, 524, 525, 526, 527, 528, 529, 530, 531, 532, 533, 534, 535, 536, 537, 538, 539, 540, 541, 542, 543, 544, 545, 546, 547, 548, 549, 550, 551, 552, 553, 554, 555, 556, 557, 558, 559, 560, 561, 562, 563, 564, 565, 566, 567, 568, 569, 570, 571, 572, 573, 574, 575, 576, 577, 578, 579, 580, 581, 582, 583, 584, 585, 586, 587, 588, 589, 590, 591, 592, 593, 594, 595, 596, 597, 598, 599, 600, 601, 602, 603, 604, 605, 606, 607, 608, 609, 610, 611, 612, 613, 614, 615, 616, 617, 618, 619, 620, 621, 622, 623, 624, 625, 626, 627, 628, 629, 630, 631, 632, 633, 634, 635, 636, 637, 638, 639, 640, 641, 642, 643, 644, 645, 646, 647, 648, 649, 650, 651, 652, 653, 654, 655, 656, 657, 658, 659, 660, 661, 662, 663, 664, 665, 666, 667, 668, 669, 670, 671, 672, 673, 674, 675, 676, 677, 678, 679, 680, 681, 682, 683, 684, 685, 686, 687, 688, 689, 690, 691, 692, 693, 694, 695, 696, 697, 698, 699, 700, 701, 702, 703, 704, 705, 706, 707, 708, 709, 710, 711, 712, 713, 714, 715, 716, 717, 718, 719, 720, 721, 722, 723, 724, 725, 726, 727, 728, 729, 730, 731, 732, 733, 734, 735, 736, 737, 738, 739, 740, 741, 742, 743, 744, 745, 746, 747, 748, 749, 750, 751, 752, 753, 754, 755, 756, 757, 758, 759, 760, 761, 762, 763, 764, 765, 766, 767, 768, 769, 770, 771, 772, 773, 774, 775, 776, 777, 778, 779, 780, 781, 782, 783, 784, 785, 786, 787, 788, 789, 790, 791, 792, 793, 794, 795, 796, 797, 798, 799, 800, 801, 802, 803, 804, 805, 806, 807, 808, 809, 810, 811, 812, 813, 814, 815, 816, 817, 818, 819, 820, 821, 822, 823, 824, 825, 826, 827, 828, 829, 830, 831, 832, 833, 834, 835, 836, 837, 838, 839, 840, 841, 842, 843, 844, 845, 846, 847, 848, 849, 850, 851, 852, 853, 854, 855, 856, 857, 858, 859, 860, 861, 862, 863, 864, 865, 866, 867, 868, 869, 870, 871, 872, 873, 874, 875, 876, 877, 878, 879, 880, 881, 882, 883, 884, 885, 886, 887, 888, 889, 890, 891, 892, 893, 894, 895, 896, 897, 898, 899, 900, 901, 902, 903, 904, 905, 906, 907, 908, 909, 910, 911, 912, 913, 914, 915, 916, 917, 918, 919, 920, 921, 922, 923, 924, 925, 926, 927, 928, 929, 930, 931, 932, 933, 934, 935, 936, 937, 938, 939, 940, 941, 942, 943, 944, 945, 946, 947, 948, 949, 950, 951, 952, 953, 954, 955, 956, 957, 958, 959, 960, 961, 962, 963, 964, 965, 966, 967, 968, 969, 970, 971, 972, 973, 974, 975, 976, 977, 978, 979, 980, 981, 982, 983, 984, 985, 986, 987, 988, 989, 990, 991, 992, 993, 994, 995, 996, 997, 998, 999, 1000.

ATOL Certificate

This confirms that your money is protected by the ATOL scheme and that you can get home if your travel company collapses.

This certificate sets out how the ATOL scheme will protect the people named on it for the parts of their trip listed below.

Who is protected? Number of passengers: 10

What is protected?

You can find more detailed information on your booking, including price, on the confirmation you will receive from Gap Africa Projects Limited.

Who is protecting your trip?
Gap Africa Projects Limited ATOL Number 10890

Your protection
You are protected from when you were given this certificate to the end of your trip. If Gap Africa Projects Limited ceases trading, the passengers named above will either:

- 1 complete their trip and return to the UK; or
- 2 receive a refund.

Your protection depends on the terms of the ATOL scheme (available at www.atol.org.uk).

If Gap Africa Projects Limited ceases trading, you must follow the instructions at www.atol.org.uk (where there will be details of arrangements to bring people back to the UK, and information on how people can claim their money back) or you can call (444) 20 7463 6360.

Unique reference number	Date of issue	ATOL Certificate issuer	ATOL number	Package sale
4413	19/10/2022	Gap Africa Projects Ltd	10890	

[Click here to view all available flights](#)

BOOKING YOUR ADVENTURE

AFRICA

Group Web Page

<https://gapafricaprojects.com/26-4776/>



Booking Form

<https://gapafricaprojects.com/booking-form-26-4776-mca-wew-myerscough-college/>



BOOKING FORM

Your Global Adventure Starts here!

Please use the form below to submit your provisional booking to your selected project. You have the option to pay your initial deposit with the submission of your booking form, or we will contact you for payment once your project placement has been secured.

If you'd like to contact us to ask any initial questions or find out more about what project you'd like to go on and when, you can get also get in touch using our short enquiry form, or by calling +44 (0) 207 193 7819.

(NB: Your name should be given as displayed on your passport)

Title *

Name *

Date of birth *

Address *

Sustainability & Social, Economic Responsibility

Local employment from rural communities – our project partners employ a high percentage of staff from local communities. They advocate training to advance careers in hospitality, wildlife and conservation.

Low environmental impact camps – our project bush camps are built with minimal impact on the environment. Resources from the surrounding area are utilised for buildings, water is (where possible) pumped from local river sources and green energy supplies, such as solar are championed.

Community donations and support – we encourage all our international study groups to be proactive in donation collections and arrange for excess baggage for said donations to be taken out to South Africa in support of the local communities.

Move Africa, supporting young females – 3 in 10 girls in South Africa miss a week of school every month because they cannot afford basic sanitary products. Our project partners work with Move Africa alongside their partner NGOs, to distribute menstrual cups to the local communities and provide education workshops.

Rhino Art – Project rhino realises the enormous responsibility the youth have to ensure our wildlife is protected for many generations to come. They ensure they can reach and educate as many kids as possible through Rhino Art, using art workshops to teach about conservation. This initiative is supported by our local project partners.

Food/crop education – our project partners encourage food and crop education to rural communities, where cost of living to low income families and distance travelled to obtain basic resources can prove problematic. Projects include community allotments and providing education on best practice for crop rotations, harvest seasons and nutrition.

Recycling workshops – Litter, and in particular plastics, is a major issue and threat to the ecosystem in Southern Africa. Rural communities have limited waste removal available and it is therefore a problem escalating at an alarming rate. Recycling workshops are provided through local schools to help educate children on the importance of correctly disposing of litter and recycling plastics.



GLOBAL reach. **ADVENTURE** for all. **PROJECTS** to inspire.

Explore our network of Global Adventure Projects:



WWW.GLOBALADVENTUREPROJECTS.COM

