



# KENDAL COLLEGE PROJECT PRESENTATION



## Shamwari Group Expedition

**AFRICA**

**GLOBAL** reach. **ADVENTURE** for all. **PROJECTS** to inspire.

# ABOUT US:

AFRICA

## GAP Africa Projects

- We are a specialised travel company that offers academic trips and volunteering opportunities for groups and individual travellers, in a number of locations worldwide
- We pride ourselves on curating experiences which are personalised to your needs and requirements
- Our first project travelled in 2012
- Full ATOL Bonding
- Working with over 55 Colleges and Universities around the UK
- A small dedicated team in the UK and South Africa.







AFRICA

# ABOUT SHAMWARI GAME RESERVE

Project overview and  
location

## Your Conservation Field Trip Explained

- A unique conservation experience based in South Africa
- Live on a Wild African Game Reserve
- The opportunity to experience hands on wildlife conservation
- Working behind the scenes on a Game Reserve in Africa
- Tailor made projects to suit your needs and interests
- Project Activities include:
  - Pioneering Conservation Research
  - Conservation Activities
  - Adventure and Excitement
- 12 Day experience
- The most incredible wildlife experience you will ever have



## What is a Game Reserve?

- A game reserve is a large area of protected land where wild animals can live safely.
- Wildlife is free roaming throughout the reserve allowing them to thrive in their natural habitat.
- Reserves are either Government Owned (National Parks) or Privately Owned/Managed.
- Most reserves will have physical boundaries i.e. electrified fence line.
- Due to physical boundaries, wildlife must be managed due to restraints on population growth, migration and resources.
- Wildlife is protected but also utilised as a tourist attraction (Eco Tourism) which creates funding for conservation efforts and research.



# ABOUT SHAMWARI

AFRICA

## Shamwari Game Reserve

- 24,000 Hectare Privately Owned Game Reserve
- A pioneer in conservation in Southern Africa
- Award-winning team including:
  - Wildlife Vets
  - Conservationists
  - Ecologists
  - Anti Poaching
- Home to Born Free Foundation
- Vulpro, Vulture Conservation Project
- Lodge dedicated to our groups





# ABOUT SHAMWARI

AFRICA

## Shamwari Game Reserve – Location

- South Africa a world leader in conservation
- Malaria-free Eastern Cape



# ABOUT SHAMWARI

AFRICA

## Shamwari Game Reserve – Location

- South Africa a world leader in conservation
- Privately owned Shamwari Game Reserve
- Malaria-free Eastern Cape





# ABOUT SHAMWARI

AFRICA

## Home to the BIG 5



ANY QUESTIONS?

[INFO@GAPAFRICAPROJECTS.COM](mailto:INFO@GAPAFRICAPROJECTS.COM) | +44 (0)207 1937819

Project Presentation 9



# ABOUT SHAMWARI

AFRICA

Home to over 60 Species of Mammal



ANY QUESTIONS?

[INFO@GAPAFRICAPROJECTS.COM](mailto:INFO@GAPAFRICAPROJECTS.COM) | +44 (0)207 1937819

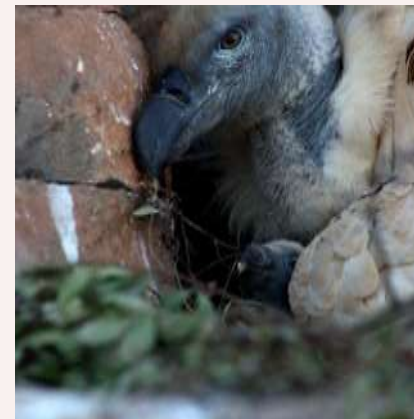
Project Presentation 10



# ABOUT SHAMWARI

AFRICA

## Reptiles and Birds



ANY QUESTIONS?

[INFO@GAPAFRICAPROJECTS.COM](mailto:INFO@GAPAFRICAPROJECTS.COM) | +44 (0)207 1937819

Project Presentation 11





AFRICA

# ABOUT THE PROJECT

Our conservation work  
in more detail



# ABOUT THE PROJECT

AFRICA

## Bush Skills – Monitoring Drives



ANY QUESTIONS?

[INFO@GAPAFRICAPROJECTS.COM](mailto:INFO@GAPAFRICAPROJECTS.COM) | +44 (0)207 1937819

Project Presentation 13



# ABOUT THE PROJECT

AFRICA

## Bush Skills – Bush Walks, Tracking Wildlife



ANY QUESTIONS?

[INFO@GAPAFRICAPROJECTS.COM](mailto:INFO@GAPAFRICAPROJECTS.COM) | +44 (0)207 1937819

Project Presentation 14



# ABOUT THE PROJECT

AFRICA

## Reserve Maintenance



ANY QUESTIONS?

[INFO@GAPAFRICAPROJECTS.COM](mailto:INFO@GAPAFRICAPROJECTS.COM) | +44 (0)207 1937819

Project Presentation 15



# ABOUT THE PROJECT

AFRICA

## Reserve Maintenance



ANY QUESTIONS?

[INFO@GAPAFRICAPROJECTS.COM](mailto:INFO@GAPAFRICAPROJECTS.COM) | +44 (0)207 1937819

Project Presentation 16



# ABOUT THE PROJECT

AFRICA

## Research – Elephant Monitoring



ANY QUESTIONS?

[INFO@GAPAFRICAPROJECTS.COM](mailto:INFO@GAPAFRICAPROJECTS.COM) | +44 (0)207 1937819

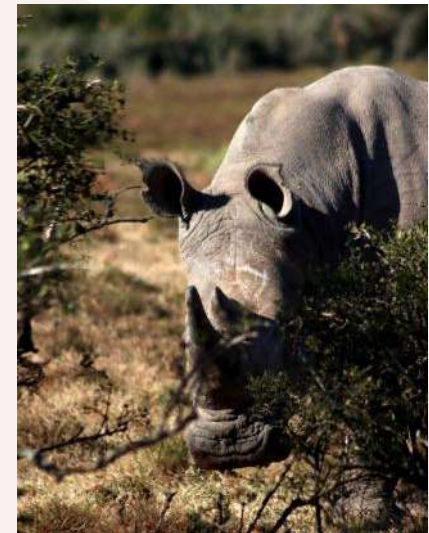
Project Presentation 17



# ABOUT THE PROJECT

AFRICA

## Research – Rhino Tracking



ANY QUESTIONS?

[INFO@GAPAFRICAPROJECTS.COM](mailto:INFO@GAPAFRICAPROJECTS.COM) | +44 (0)207 1937819

Project Presentation 18



# ABOUT THE PROJECT

AFRICA

## Rhino Awareness and Anti-Poaching Talks



ANY QUESTIONS?

[INFO@GAPAFRICAPROJECTS.COM](mailto:INFO@GAPAFRICAPROJECTS.COM) | +44 (0)207 1937819

Project Presentation 19



# ABOUT THE PROJECT

AFRICA

## Research – Population Growth: Predators



ANY QUESTIONS?

[INFO@GAPAFRICAPROJECTS.COM](mailto:INFO@GAPAFRICAPROJECTS.COM) | +44 (0)207 1937819

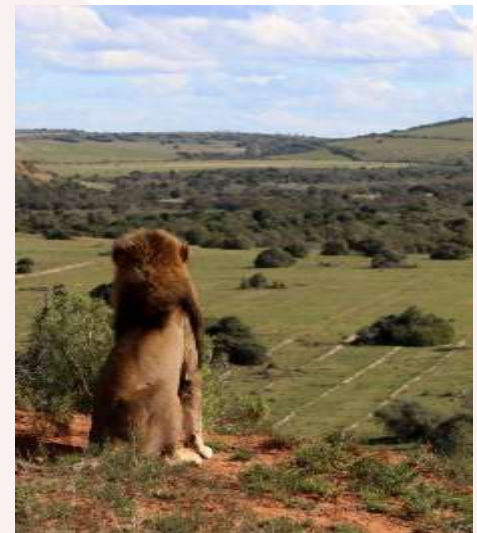
Project Presentation 20



# ABOUT THE PROJECT

AFRICA

## Research – Habitat and Prey Selection



ANY QUESTIONS?

[INFO@GAPAFRICAPROJECTS.COM](mailto:INFO@GAPAFRICAPROJECTS.COM) | +44 (0)207 1937819

Project Presentation 21



# ABOUT THE PROJECT

AFRICA

## Camera Trap – Research and Study





# ABOUT THE PROJECT

AFRICA

## Night Game Drives



ANY QUESTIONS?

[INFO@GAPAFRICAPROJECTS.COM](mailto:INFO@GAPAFRICAPROJECTS.COM) | +44 (0)207 1937819

Project Presentation 23



# ABOUT THE PROJECT

AFRICA

## Visit to the Vulpro Centre



ANY QUESTIONS?

[INFO@GAPAFRICAPROJECTS.COM](mailto:INFO@GAPAFRICAPROJECTS.COM) | +44 (0)207 1937819

Project Presentation 25



# ABOUT THE PROJECT

AFRICA

## Community Development



ANY QUESTIONS?

[INFO@GAPAFRICAPROJECTS.COM](mailto:INFO@GAPAFRICAPROJECTS.COM) | +44 (0)207 1937819

Project Presentation 27



# ABOUT THE PROJECT

AFRICA

## Community – GAP Donation Bags



ANY QUESTIONS?

[INFO@GAPAFRICAPROJECTS.COM](mailto:INFO@GAPAFRICAPROJECTS.COM) | +44 (0)207 1937819

Project Presentation 28





AFRICA

# WEEKEND EXCURSIONS

Your free time on project



# WEEKEND ACTIVITIES & EXCURSIONS

AFRICA

## Activities/Excursions (own cost and optional)

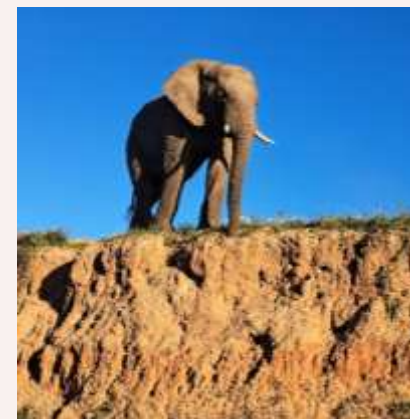
There will be free time/days off, where you'll be able to do some additional activities at your **own cost**. These are **optional**.

Most activities are booked and paid for in advance (before leaving the UK). Others will be booked and paid for (**cash** or, sometimes, **card**) at the project.

More information will be given closer to the time.

Your travel insurance **must** cover you for any additional activities you choose to do.

**Any activities booked and paid for locally are not covered under GAPAfrica Project's personal liability insurance.**







AFRICA

# ACCOMODATION & LIFESTYLE

Living in the African Bush



# ACCOMMODATION & LIFESTYLE

AFRICA



ANY QUESTIONS?

[INFO@GAPAFRICAPROJECTS.COM](mailto:INFO@GAPAFRICAPROJECTS.COM) | +44 (0)207 1937819

Project Presentation 32



# ACCOMMODATION & LIFESTYLE

AFRICA



ANY QUESTIONS?

[INFO@GAPAFRICAPROJECTS.COM](mailto:INFO@GAPAFRICAPROJECTS.COM) | +44 (0)207 1937819

Project Presentation 33



# ACCOMMODATION & LIFESTYLE

AFRICA

## Life on Reserve – Life long memories



ANY QUESTIONS?

[INFO@GAPAFRICAPROJECTS.COM](mailto:INFO@GAPAFRICAPROJECTS.COM) | +44 (0)207 1937819

Project Presentation 34





AFRICA

# BOOKING YOUR ADVENTURE

The next steps to the trip of a  
lifetime!



# WHY SHOULD I TRAVEL?

AFRICA

## What do previous travellers say about the Shamwari Conservation Expedition?



"It was the most **amazing** experience I've ever had."



"I learnt so many new things that have **educated** me **beyond** classroom curriculum"



"There wasn't a single experience that didn't **amaze** me and make me feel **enriched**."

Reference: GAP Africa Projects Post Project Trip Questionnaire 23/24



# WHY SHOULD I TRAVEL?

AFRICA

## What do previous travellers say about the Shamwari Conservation Expedition?



"Being at Shamwari really developed my knowledge of animal behaviours"



Everything **exceeded** my expectations, and the trip was **life-changing.**"



Our guide was **amazing**, we got the **opportunity** to take part in talks and demonstrations by APU

Reference: GAP Africa Projects Post Project Trip Questionnaire 23/24



# WHAT'S INCLUDED

AFRICA

## What is included?

- Flights
- Transfers to/from project
- Accommodation
- Three meals per day
- All activities as part of the project
- Airport meet/greet
- 24/7 In country support



## NOT Included

- Personal Travel Insurance \*
- Meals on travel days – before arriving & after departing from project
- Any activities not specified as part of the project
- Visas/travel documents

\* We recommend that you take out personal travel insurance as soon as your booking is confirmed.



# THE NEXT STEPS

AFRICA



## Project dates & key deadlines

### Confirmed trip dates:

Depart UK: 4<sup>th</sup> Jan 2026 | Arrive SA: 5<sup>th</sup> Jan 2026

Depart SA: 17<sup>th</sup> Jan 2026 | Arrive UK: 18<sup>th</sup> Jan 2026

### Trip cost:

£2,845.00\* Based on a group of 18 (confirmed once flights have been held)

### Key deadlines are:

- Return online booking form by 9am 05/09/2025
- Deposit payment, £300.00 by 09/09/2025
- 50% instalment payment of £1272.50 to be paid by 15/10/2025
- Balance payment of £1272.50 to be paid by 10/11/2025
- 22/12/2025 e-Tickets & final documents will be issued



# BOOKING YOUR ADVENTURE

AFRICA

## Booking Form

- Please submit by 9am  
05/09/2025
- No deposit required at this stage of booking
- Passport fields not mandatory

## Key deadlines are:

- Deposit of £300 to confirm placement by 09/09/2025
- Instalment payment of 50% due 16 weeks before departure
- Balance payment due 8 weeks before departure

**GAP Africa Projects**

AFRICA GROUP PROJECTS | GLOBAL ADVENTURE PROJECTS | AFRICA INDIVIDUAL PROJECTS | WHO WE ARE | BLOG | GET IN TOUCH

CALL: +44 (0) 207 193 7819  
EMAIL: INFO@GAPAFRICAPROJECTS.COM

### BOOKING FORM

(NB: Your name should be given as displayed on your passport)

Title \*

Name \*

Date of birth \*

Address \*

Telephone \*

Mobile \*

Email 1 \*

Email 2 \*

(NB: Please note that all booking correspondence will be sent via Email)

Passport no.

Passport Issue Date



## AFRICA

This is an important document. Make sure that you take it with you when you travel.

# ATOL Certificate

This confirms that your money is protected by the ATOL scheme and that you can get home if your travel company collapses.

This certificate sets out how the ATOL scheme will protect the people named on it for the parts of their trip listed below.

Who is protected?

Number of passengers: 10

What is protected?

Standard advice is to call ATOL for 24 hours. Telephone: 0800 900 2000. Fax: 020 7069 2000. Email: [atol@atol.org.uk](mailto:atol@atol.org.uk). Website: [www.atol.org.uk](http://www.atol.org.uk). If you are unable to contact us please contact your travel agent or the Civil Aviation Authority (CAA) on 020 7467 0000. If you are unable to contact the CAA please contact the Department for Transport (DfT) on 020 744 0000.

You can find more detailed information on your booking, including price, on the confirmation you will receive from Gap Airline Projects Limited

Who is protecting your trip?

Gap Airline Projects Limited ATOL Number 10690

## Your protection

You are protected from when you were given this certificate to the end of your trip. If Gap Airline Projects Limited stops trading, the passengers named above will either:

- 1 complete their trip and return to the UK; or
- 2 receive a refund.

Your protection depends on the terms of the ATOL scheme (available at [www.atol.org.uk](http://www.atol.org.uk)).

If Gap Airline Projects Limited stops trading, you must follow the instructions at [www.atol.org.uk](http://www.atol.org.uk) (where there will be details of arrangements to bring people back to the UK, and information on how people can claim their money back) or you can call (+44) 20 7453 6350.

By issuing this ATOL Certificate, under Regulation 17 of the Civil Aviation (Air Travel Organisers' Licensing) Regulations 2012, Gap Airline Projects Ltd certifies that this trip is what is specified in the ATOL held by the originator named above.

The ATOL scheme is run by the Civil Aviation Authority and paid for by the Air Travel Trust. To see what that is and what you need to know, together with full information on its terms and conditions go to [www.atol.org.uk](http://www.atol.org.uk). As well as the protection of the ATOL scheme, you have protection under the Package Travel Regulations. For more information see [www.dft.gov.uk](http://www.dft.gov.uk) in the Travel and Transport section.

Unique reference number:	Date of issue:	ATOL Certificate holder:	Package sale
4413	10/10/2002	Gap Airline Projects Ltd	10690

Copyright © 2002 Civil Aviation Authority. This ATOL logo is a registered trade mark.

Click here to link to available hotels



# BOOKING YOUR ADVENTURE

AFRICA

## Group Web Page

<https://gapafricaprojects.com/26-4740/>



## Booking Form

<https://gapafricaprojects.com/booking-form-26-4740-kca-shw-kendal-college/>



**BOOKING FORM**

*Your Global Adventure Starts here!*

Please use the form below to submit your provisional booking to your selected project. You have the option to pay your initial deposit with the submission of your booking form, or we will contact you for payment once your project placement has been secured.

If you'd like to contact us to ask any initial questions or find out more about what project you'd like to go on and when, you can get also get in touch using our short inquiry form, or by calling +44 (0) 207 193 7819.

(NB: Your name should be given as displayed on your passport)

Title \*

Name \*

Date of birth \*

Address \*



## Sustainability & Social, Economic Responsibility

**Local employment from rural communities** – our project partners employ a high percentage of staff from local communities. They advocate training to advance careers in hospitality, wildlife and conservation.

**Low environmental impact camps** – our project bush camps are built with minimal impact on the environment. Resources from the surrounding area are utilised for buildings, water is (where possible) pumped from local river sources and green energy supplies, such as solar are championed.

**Community donations and support** – we encourage all our international study groups to be proactive in donation collections and arrange for excess baggage for said donations to be taken out to South Africa in support of the local communities.

**Move Africa, supporting young females** – 3 in 10 girls in South Africa miss a week of school every month because they cannot afford basic sanitary products. Our project partners work with Move Africa alongside their partner NGOs, to distribute menstrual cups to the local communities and provide education workshops.

**Rhino Art** – Project rhino realises the enormous responsibility the youth have to ensure our wildlife is protected for many generations to come. They ensure they can reach and educate as many kids as possible through Rhino Art, using art workshops to teach about conservation. This initiative is supported by our local project partners.

**Food/crop education** – our project partners encourage food and crop education to rural communities, where cost of living to low income families and distance travelled to obtain basic resources can prove problematic. Projects include community allotments and providing education on best practice for crop rotations, harvest seasons and nutrition.

**Recycling workshops** – Litter, and in particular plastics, is a major issue and threat to the ecosystem in Southern Africa. Rural communities have limited waste removal available and it is therefore a problem escalating at an alarming rate. Recycling workshops are provided through local schools to help educate children on the importance of correctly disposing of litter and recycling plastics.





**GLOBAL** reach. **ADVENTURE** for all. **PROJECTS** to inspire.

Explore our network of Global Adventure Projects:



[GLOBALADVENTUREPROJECTS.COM](http://GLOBALADVENTUREPROJECTS.COM)

