



# BISHOP BURTON COLLEGE PROJECT PRESENTATION PACK

## KwaZulu-Natal Community Volunteering Project



**AFRICA**

**GLOBAL** reach. **ADVENTURE** for all. **PROJECTS** to inspire.

# ABOUT US:

AFRICA

## GAP Africa Projects

- We are a specialised travel company that offers academic trips and volunteering opportunities for groups and individual travellers, in a number of locations worldwide
- We pride ourselves on curating experiences which are personalised to your needs and requirements
- Our first project travelled in 2012
- Full ATOL Bonding
- Working with over 55 Colleges and Universities around the UK
- A small dedicated team in the UK and South Africa.







AFRICA

# ABOUT THE PROJECT

Overview and location  
of the project

# ABOUT YOUR PROJECT

AFRICA

## Project Location





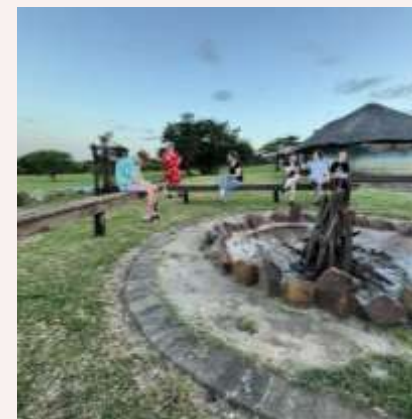
# ABOUT YOUR PROJECT

AFRICA

## Project Location – Bonamanzi Game Reserve

You will stay at Bonamanzi Game Reserve a privately owned Game Reserve, 4000 hectares in size.

You will spend 14 nights at this stunning location.





# ABOUT YOUR PROJECT

AFRICA

## Project Rhino



ANY QUESTIONS?

[INFO@GAPAFRICAPROJECTS.COM](mailto:INFO@GAPAFRICAPROJECTS.COM) | +44 (0)207 1937819

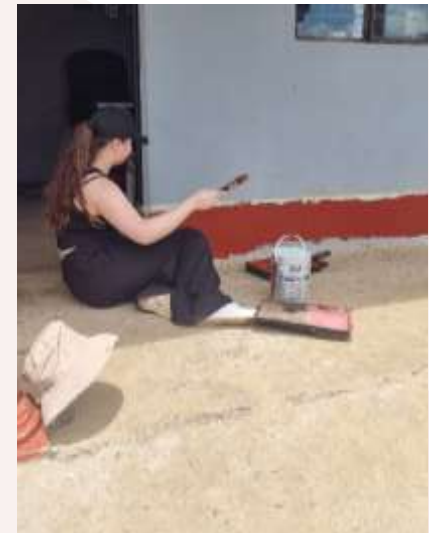
PROJECT PRESENTATION 6



# ABOUT YOUR PROJECT

AFRICA

## Creche Refurbishment



ANY QUESTIONS?

[INFO@GAPAFRICAPROJECTS.COM](mailto:INFO@GAPAFRICAPROJECTS.COM) | +44 (0)207 1937819

PROJECT PRESENTATION 7



# ABOUT YOUR PROJECT

AFRICA

## Art Projects



ANY QUESTIONS?

[INFO@GAPAFRICAPROJECTS.COM](mailto:INFO@GAPAFRICAPROJECTS.COM) | +44 (0)207 1937819

PROJECT PRESENTATION 8



# ABOUT YOUR PROJECT

AFRICA

## Health Care Messages



ANY QUESTIONS?

[INFO@GAPAFRICAPROJECTS.COM](mailto:INFO@GAPAFRICAPROJECTS.COM) | +44 (0)207 1937819

PROJECT PRESENTATION 9



# ABOUT YOUR PROJECT

AFRICA

## Move Africa



ANY QUESTIONS?

[INFO@GAPAFRICAPROJECTS.COM](mailto:INFO@GAPAFRICAPROJECTS.COM) | +44 (0)207 1937819

PROJECT PRESENTATION 10



# ABOUT YOUR PROJECT

AFRICA

## Community Development Activities



ANY QUESTIONS?

[INFO@GAPAFRICAPROJECTS.COM](mailto:INFO@GAPAFRICAPROJECTS.COM) | +44 (0)207 1937819

PROJECT PRESENTATION 11



# ABOUT YOUR PROJECT

AFRICA

## Community Development Activities



ANY QUESTIONS?

[INFO@GAPAFRICAPROJECTS.COM](mailto:INFO@GAPAFRICAPROJECTS.COM) | +44 (0)207 1937819

PROJECT PRESENTATION 12



# ABOUT YOUR PROJECT

AFRICA

## Community – GAP Donation Bags



ANY QUESTIONS?

[INFO@GAPAFRICAPROJECTS.COM](mailto:INFO@GAPAFRICAPROJECTS.COM) | +44 (0)207 1937819

PROJECT PRESENTATION 13



# ABOUT YOUR PROJECT

AFRICA

## Zulu Culture Experience



ANY QUESTIONS?

[INFO@GAPAFRICAPROJECTS.COM](mailto:INFO@GAPAFRICAPROJECTS.COM) | +44 (0)207 1937819

PROJECT PRESENTATION 14



# ABOUT YOUR PROJECT

AFRICA

## Conservation Activities



ANY QUESTIONS?

[INFO@GAPAFRICAPROJECTS.COM](mailto:INFO@GAPAFRICAPROJECTS.COM) | +44 (0)207 1937819

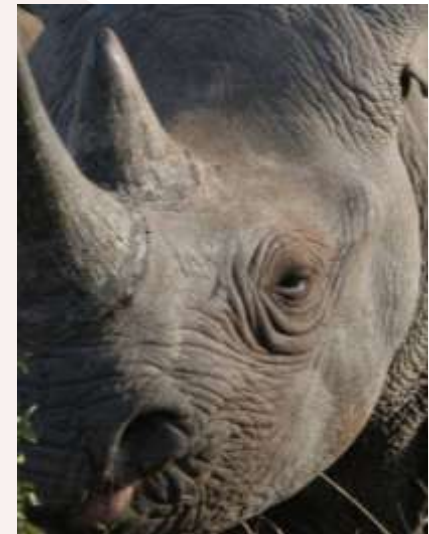
PROJECT PRESENTATION 15



# ABOUT YOUR PROJECT

AFRICA

## Conservation Activities



ANY QUESTIONS?

[INFO@GAPAFRICAPROJECTS.COM](mailto:INFO@GAPAFRICAPROJECTS.COM) | +44 (0)207 1937819

PROJECT PRESENTATION 16





AFRICA

# ACCOMMODATION & LIFESTYLE

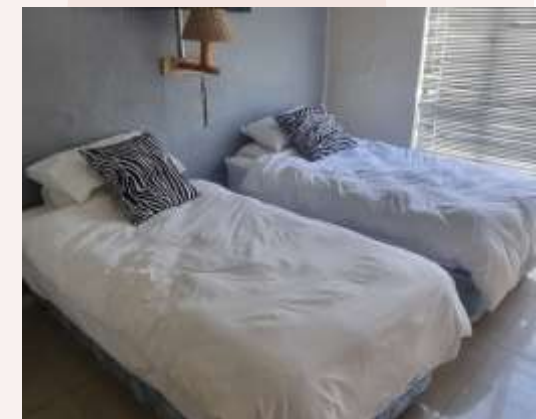
Life in Africa



# ACCOMMODATION

AFRICA

## Bundu Camp @ Bonamanzi



ANY QUESTIONS?

INFO@GAPAFRICAPROJECTS.COM | +44 (0)207 1937819

PROJECT PRESENTATION 18



# ACCOMMODATION

AFRICA

## Bundu Camp @ Bonamanzi



ANY QUESTIONS?

[INFO@GAPAFRICAPROJECTS.COM](mailto:INFO@GAPAFRICAPROJECTS.COM) | +44 (0)207 1937819

PROJECT PRESENTATION 19





AFRICA

# THE NEXT STEPS TO YOUR PROJECT

The next steps to the trip of a  
lifetime!



# WHY SHOULD I TRAVEL?

AFRICA

## What do previous travellers say about the KwaZulu-Natal Community Volunteering Project?



"Staying at Bonamanzi really developed my knowledge of animal behaviours"



Everything **exceeded** my expectations, and the trip was **life-changing.**"



The staff were **amazing**, we got the **opportunity** to take part in talks and demonstrations

Reference: GAP Africa Projects Post Project Trip Questionnaire 23/24



# WHAT'S INCLUDED

AFRICA

## What is included?

- Flights
- Transfers to/from project
- Accommodation
- Three meals per day
- All activities as part of the project
- Airport meet/greet
- 24/7 In country support



## NOT Included

- Personal Travel Insurance \*
- Meals on travel days – before arriving & after departing from project
- Any activities not specified as part of the project
- Visas/travel documents

\*Provided by the college – please confirm with your college the details of the insurance provided.



# THE NEXT STEPS

AFRICA



## Project dates & key deadlines

### Confirmed trip dates:

Depart UK: 8<sup>th</sup> February 2026 | Arrive SA: 9<sup>th</sup> February 2026

Depart SA: 23<sup>rd</sup> February 2026 | Arrive UK 24<sup>th</sup> February 2026

### Trip cost:

£480.00\*

### Key deadlines are:

50% instalment payment of £240.00 to be paid by 20/10/2025

Balance payment of £240.00 to be paid by 15/12/2025

26/01/2026 e-Tickets & final documents will be issued

Flight No	Flight Date	Dept.	Dept. Time	Arr.	Arr. Time
EK022	08/02/2026	Manchester (MAN)	08:50	Dubai (DXB)	19:55
EK767	08/02/2026	Dubai (DXB)	23:20	Johannesburg (JNB)	05:30 + 1 Day
TBC	09/02/2026	Johannesburg (JNB)	TBC	King Shaka Int: Durban (DUR)	TBC
TBC	23/02/2026	King Shaka Int: Durban (DUR)	TBC	Johannesburg (JNB)	TBC
EK764	23/02/2026	Johannesburg (JNB)	18:50	Dubai (DXB)	05:05 + 1 Day
EK017	24/02/2026	Dubai (DXB)	07:10	Manchester (MAN)	11:15

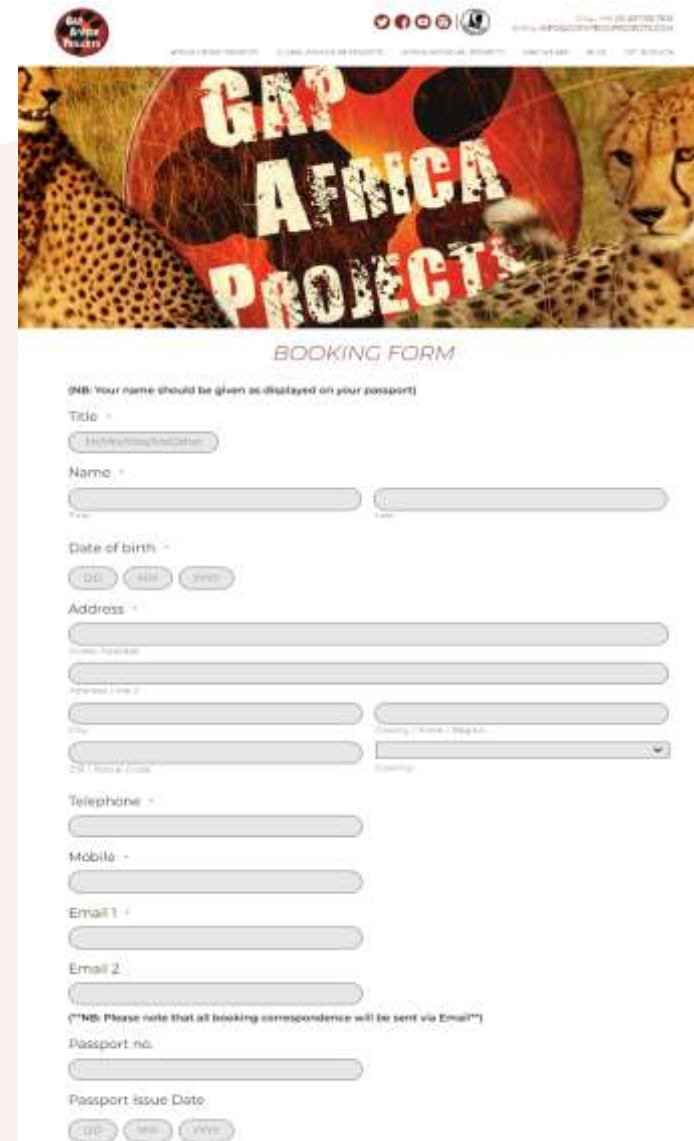


# BOOKING YOUR ADVENTURE

AFRICA

## Booking Form

- Please submit by 19/09/2025
- Passport fields not mandatory
- Two different email addresses



**GAP AFRICA PROJECTS**

**BOOKING FORM**

(NB: Your name should be given as displayed on your passport)

Title \*

Name \*

Date of birth \*

Address \*

Telephone \*

Mobile \*

Email 1 \*

Email 2 \*

(NB: Please note that all booking correspondence will be sent via Email!)

Passport no.

Passport issue Date



# THE NEXT STEPS

AFRICA

## Confirmation Documents

Confirmation documents will be issued and sent directly to you via email.

Please communicate with us with any questions relating to the field trip.

**Gap Africa Projects**

**Your Booking**

**Travel Advice**

**Names and surnames**

**Passport expiry date**

**Passport Copies**

**Travel Insurance**

**Passengers Travelling**

**Miss Chloe**

**Sub Land Conservation Research 06/02/21 - 06/02/21**

**Inclusions**

**Exclusions**

**Your Flight(s)**

Flight No.	Class	Flight Type	Flight Dates	Departure Airport	Arrival Airport
BA109	06/02/2021	08:00	10:00	London Heathrow (LHR)	London Heathrow (LHR)
BA109	06/02/2021	08:00	10:00	London Heathrow (LHR)	London Heathrow (LHR)
BA109	06/02/2021	08:00	10:00	London Heathrow (LHR)	London Heathrow (LHR)

**444 00 207 193 7819**

**CONFIRMATION INVOICE**

**Gap Africa Projects**

**Miss Chloe**

**Flight Details**

Flight No.	Class	Flight Type	Flight Dates	Departure Airport	Arrival Airport
BA109	06/02/2021	08:00	10:00	London Heathrow (LHR)	London Heathrow (LHR)
BA109	06/02/2021	08:00	10:00	London Heathrow (LHR)	London Heathrow (LHR)
BA109	06/02/2021	08:00	10:00	London Heathrow (LHR)	London Heathrow (LHR)

**444 00 207 193 7819**

**ATOL Certificate**

This confirms that your money is protected by the ATOL scheme and that you can get home if your travel company collapses.

This certificate sets out how the ATOL scheme will protect the people named on it for the parts of their trip listed below.

**Who is protected?**

**What is protected?**

**Who is protecting your trip?**

**Your protection**

**ATOL Certificate**

ATOL Certificate Number	Date of Issue	ATOL Scheme	ATOL Number	Package Name
1415	06/02/2021	Gap Africa Projects Ltd	12880	Sub Land Conservation Research



# BOOKING YOUR ADVENTURE

AFRICA

## Group Web Page

<https://gapafricaprojects.com/26-4736/>



## Booking Form

<https://gapafricaprojects.com/booking-form-26-4736-bba-kzg-bishop-burton-college/>



**BOOKING FORM**

Your Global Adventure Starts here!

Please use the form below to submit your provisional booking to your selected project. You have the option to pay your initial deposit with the submission of your booking form, or we will contact you for payment once your project placement has been secured.

If you'd like to contact us to ask any initial questions or find out more about what project you'd like to go on and when, you can get also get in touch using our short enquiry form, or by calling: +44 (0) 207 193 7819.

(NB: Your name should be given as displayed on your passport)

Title \*

Name \*

Date of birth \*

Address \*



## Sustainability & Social, Economic Responsibility

**Local employment from rural communities** – our project partners employ a high percentage of staff from local communities. They advocate training to advance careers in hospitality, wildlife and conservation.

**Low environmental impact camps** – our project bush camps are built with minimal impact on the environment. Resources from the surrounding area are utilised for buildings, water is (where possible) pumped from local river sources and green energy supplies, such as solar are championed.

**Community donations and support** – we encourage all our international study groups to be proactive in donation collections and arrange for excess baggage for said donations to be taken out to South Africa in support of the local communities.

**Move Africa, supporting young females** – 3 in 10 girls in South Africa miss a week of school every month because they cannot afford basic sanitary products. Our project partners work with Move Africa alongside their partner NGOs, to distribute menstrual cups to the local communities and provide education workshops.

**Rhino Art** – Project rhino realises the enormous responsibility the youth have to ensure our wildlife is protected for many generations to come. They ensure they can reach and educate as many kids as possible through Rhino Art, using art workshops to teach about conservation. This initiative is supported by our local project partners.

**Food/crop education** – our project partners encourage food and crop education to rural communities, where cost of living to low-income families and distance travelled to obtain basic resources can prove problematic. Projects include community allotments and providing education on best practice for crop rotations, harvest seasons and nutrition.

**Recycling workshops** – Litter, and in particular plastics, is a major issue and threat to the ecosystem in Southern Africa. Rural communities have limited waste removal available, and it is therefore a problem escalating at an alarming rate. Recycling workshops are provided through local schools to help educate children on the importance of correctly disposing of litter and recycling plastics.





**GLOBAL** reach. **ADVENTURE** for all. **PROJECTS** to inspire.

Explore our network of Global Adventure Projects:



**GLOBALADVENTUREPROJECTS.COM**

