



## VETERINARY PROFESSIONALS – PROJECT INFORMATION PACK

The background is a collage of three images. On the left, two people are crouching in a grassy field, attending to a small animal. In the center, a circular inset shows a sunset over a body of water with hills in the background. On the right, there is a close-up of a kudu antelope's head with its long, spiraling horns.

# Waterberg Wildlife & Veterinary Course Entabeni (Vet Professionals)

**AFRICA**

**GLOBAL** reach. **ADVENTURE** for all. **PROJECTS** to inspire.





AFRICA

# PROJECT LOCATION

The Waterberg  
overview



# ABOUT THE WATERBERG

AFRICA

## A place that promotes the connection between people and nature

The Waterberg contains pristine habitats, abundant bird and wildlife and has a natural unspoilt beauty. The Waterberg is an escarpment of massive sandstone buttresses and outcrops, incorporating many rivers, streams and wetlands, stretching for 150 km in a long arc.

The Waterberg has many special and unique characteristics which is why UNESCO approved the area for biosphere reserve status in 2001.

The Waterberg is a critical conservation area for African wild dogs, with the last free-roaming pack in South Africa; black and white rhino, with the third largest population within South Africa; and the Cape Vulture, with the largest colony of 800 breeding pairs.



# ABOUT ENTABENI

AFRICA

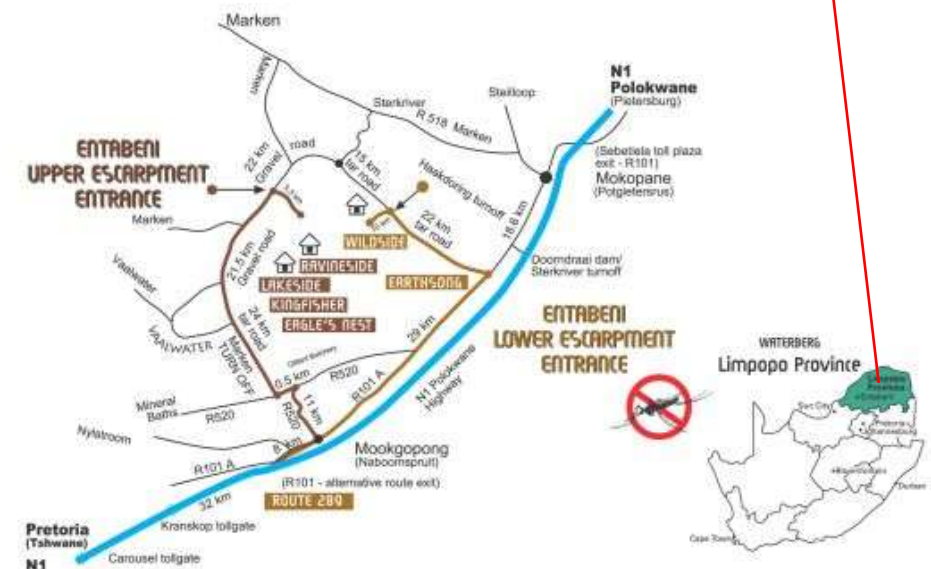
## Entabeni Safari Conservancy

### Location

The Waterberg Wildlife and Veterinary Course – Entabeni is based on the Upper Escarpment of the 22,000-hectare Entabeni Safari Conservancy in the Limpopo Province of South Africa.

Located a pleasant 3.5 hour drive from Johannesburg; in the **malaria-free** area of the Waterberg, Limpopo Province.

Entabeni is set within a tranquil, natural setting boasting changing vistas, diverse eco-systems and a breath-taking mountainous backdrop. Entabeni is the integration of a 22,000 hectare Big 5 Game Reserve, a resort and luxurious lodges.







AFRICA

# ABOUT THE PROJECT

The conservation work  
in more detail

# ABOUT THE WATERBERG

AFRICA

## Your two project locations

Your trip is split between two locations, in two neighbouring provinces of South Africa. You will first observe a focused wildlife veterinary practice on a reserve in the Waterberg (**Entabeni Safari Conservancy**) before travelling to Gauteng to attend: some guest lectures, a tour of Johannesburg Wildlife Vet – the only small animal practice in the country that only works on wildlife, assist with some shelter and community cases and a K9 conservation unit. Project locations and duration are as follows:

### Itinerary

#### 8 Nights

Entabeni Safari Conservancy – Waterberg – Limpopo Province

#### 4 Nights

Kyalami, Midrand and surrounding areas – Gauteng Province





**AFRICA**

# **ABOUT THE PROJECT: ENTABENI SAFARI CONSERVANCY**

Our conservation work  
in more detail

## Waterberg Wildlife & Veterinary Course – Entabeni

This course provides the opportunity for hands-on practical wildlife experience for pre-vet, vet nurses, technicians or those studying in the veterinary field.

Based at the reserve's research camp working directly with the wildlife monitoring team; this department runs and manages the day-to-day decisions and monitoring of the wildlife and ecosystem of the reserve.

The team and their work are crucial to the management and welfare of all wildlife on the reserve, as they monitor the animals' conditions, herd structures, locations and behaviours.

Time will be spent working with the reserve's veterinarian and other local wildlife vets with whom the team work.





# ABOUT THE PROJECT

AFRICA

## Entabeni Safari Conservancy (8 Nights)

- Introduction to Entabeni Safari Conservancy and Research Projects
- Rhino orphanage – assist with orphaned rhino calves
- Time spent with the research team conducting conservation activities
- Wildlife Veterinary work and intervention (Dr Pierre Bester)
- Build up to possible intervention and planning

It's important to remember that wildlife does not work to an agenda, therefore activities may change at short notice!



# ABOUT THE PROJECT

AFRICA

## Dr Pierre Bester – Wildlife Veterinarian

Rhino orphanage veterinarian, Dr Pierre Bester has a mixed animal practice treating large and small domestic animals as well as wildlife. The main scope of his work includes the immobilisation, treatment, and translocation of African wildlife, including megaherbivore: rhinos and elephants.

He has been involved with the immobilisation and translocation of thousands of rhinos, as well as countless other species.





## The Rhino Orphanage

The Rhino Orphanage was the first-ever specialised, non-commercial centre dedicated to the rescue, rehabilitation, raising and release of orphaned rhinos back into the wild.

Although newborn rhinos can weigh up to 50kgs, they are essentially “helpless” and require protection so that they may survive and ultimately thrive.

Rhino calves and rhino mothers are closely bonded. Rhino young are fiercely protected by their mothers in the wild, so when a rhino mother is killed, the rhino orphan becomes particularly vulnerable, and their longevity is endangered. Under normal circumstances, rhino calves will stay with their mothers for around 3 years. For this reason, the rhino orphans in their care typically require the same intensity and timeframe of nurturing from the carers.





# ABOUT THE PROJECT

AFRICA

**Veterinary interventions – dependant on wildlife & veterinary circumstances**

*Previous intervention – Rhino: sinus infection*



ANY QUESTIONS?

[INFO@GAPAFRICAPROJECTS.COM](mailto:INFO@GAPAFRICAPROJECTS.COM) | +44 (0)207 1937819

PROJECT INFORMATION PACK 12



# ABOUT THE PROJECT

AFRICA

**Veterinary interventions – dependant on wildlife & veterinary circumstances**

*Previous intervention – Lion: immobilisation for collaring & removal*



ANY QUESTIONS?

[INFO@GAPAFRICAPROJECTS.COM](mailto:INFO@GAPAFRICAPROJECTS.COM) | +44 (0)207 1937819

PROJECT INFORMATION PACK 13



# ABOUT THE PROJECT

AFRICA

**Veterinary interventions – dependant on wildlife & veterinary circumstances**

*Previous intervention – Cheetah: relocation as part of Endangered Wildlife Trust (EWT) management plan*



ANY QUESTIONS?

[INFO@GAPAFRICAPROJECTS.COM](mailto:INFO@GAPAFRICAPROJECTS.COM) | +44 (0)207 1937819

PROJECT INFORMATION PACK 14



# ABOUT THE PROJECT

AFRICA

**Veterinary interventions – dependant on wildlife & veterinary circumstances**

*Previous intervention – African wild dog: free-roaming wild dog project collaring*





# ABOUT THE PROJECT

AFRICA

**Veterinary intervention – dependant on wildlife & veterinary circumstances**

*Previous intervention – Rhino: fitting of prosthetics*



ANY QUESTIONS?

[INFO@GAPAFRICAPROJECTS.COM](mailto:INFO@GAPAFRICAPROJECTS.COM) | +44 (0)207 1937819

PROJECT INFORMATION PACK 16





**AFRICA**

# **ABOUT THE PROJECT: KYALAMI, MIDRAND AND SURROUNDING AREAS**

Our conservation work  
in more detail

# ABOUT THE PROJECT

AFRICA

## Kyalami, Midrand and surrounding areas – Gauteng (4 Nights)

- Introduction to Wildlife Veterinary work in the Context of African Wildlife (Dr Zoe Glyphis – Local Wildlife Vet)
- Visit to Johannesburg Wildlife Veterinary hospital.
- Assist with some animal shelter and community cases
- Assist with a K9 conservation unit.
- Dart shooting practice

It's important to remember that wildlife does not work to an agenda, therefore activities may change at short notice!





# ABOUT THE PROJECT

AFRICA

## Kyalami, Midrand and surrounding areas – Gauteng (X Nights)

- Introduction to Wildlife Veterinary work in the Context of African Wildlife (Dr Zoe Glyphis – Local Wildlife Vet)
- Visit to Johannesburg Wildlife Veterinary hospital.
- Assist with some animal shelter and community cases
- Assist with a K9 conservation unit.
- Dart shooting practice

It's important to remember that wildlife does not work to an agenda, therefore activities may change at short notice!





# ABOUT THE PROJECT

AFRICA

## Dr Zoe Glyphis – Wildlife Veterinarian – Predator Specialist

Dr Zoe Glyphis has become one of South Africa's leading predator specialists and is on the forefront with veterinary medicine and veterinary assistance of wild dog, hyena and cheetah conservation all over South Africa.

She is helping and assisting several NGO groups and organizations with their efforts to increase predator ranges and to establish safe and genetically viable populations in new conservation areas.





# ABOUT THE PROJECT

AFRICA

## Introduction of Darting Techniques

Learn the basic principles for darting wildlife. Each student will have the opportunity to use the gas powered dart gun at the range.





# ABOUT THE PROJECT

AFRICA

## Possible Lectures & Debate

- Drugs used in wildlife medicine
- Calculating doses in wildlife
- Logistics of wildlife transportation: customised vehicles, crates and equipment
- The Game Trade-Auction and value of livestock
- Game capture systems
- Darting wildlife
- Boma management and rehabilitation
- Orphaned Rhino rehabilitation
- Parasite control
- Managing game reserves and Land Capacity Model
- Species control – predator pits
- State veterinary disease control in practice
- Documentation required: Red Cross Permits





# ABOUT THE PROJECT

AFRICA

## Kyalami – Johannesburg Wildlife Vet

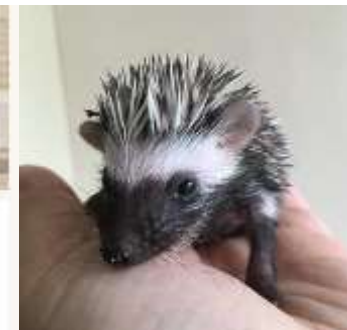
Johannesburg Wildlife Vet is a registered wildlife veterinary hospital and a rehabilitation centre that rescues, rehabilitates and releases indigenous wildlife in South Africa.

Specialising in treating sick, injured and orphaned animals, this non-profit company provides expert care while promoting conservation through education and research.

Johannesburg Wildlife Vet exclusively treats, rehabilitates, releases and protects small to medium indigenous wildlife, free of charge. The species treated range from the most common to the highly endangered and include all mammals, birds, amphibians, reptiles and even arachnids.

It is lead by Dr Karin Lourens who has been a practicing veterinarian for 22 years with a specific interest in wildlife veterinary medicine and wildlife rehabilitation of South African species.

Watch this [NETFLIX documentary](#), about a baby pangolin embarking on a journey back to the wild, featuring Johannesburg Wildlife Veterinary Hospital.





# ABOUT THE PROJECT

AFRICA

## Kyalami – Society for Animals in Distress

Vet care is provided by Vets, Vet Nurses, Animal Health Technicians and Animal Welfare Assistants.

The organisation's focus is to provide access to veterinary care for all, to serve vulnerable communities and animal care organisations.

Students will assist professional Masterton method practitioner and veterinarians at the rescue centre with horses, dogs, cats and other small animals.

The animals have been rescued from impoverished circumstances and are rehabilitated to be rehomed.





# ABOUT THE PROJECT

AFRICA

## Kyalami –Pit-Track K9 antipoaching unit

Pit-Track is a registered NPC Non-Profit Company specialising in K9 Conservation and Anti-Poaching, made up of highly skilled, and dedicated operators,, who have devoted their lives to the protection of wildlife.

Pit-Track has operated extensively on anti-poaching operations and has continued to remain in the field on the frontline of the war against poaching.

Students will meet the K9 antipoaching team. A talk about the poaching crisis will be delivered as well as a K9 demo. Students then have the opportunity to assist these working dogs with any physio needs.







AFRICA

# ACCOMMODATION & LIFESTYLE

Life in the African Bush



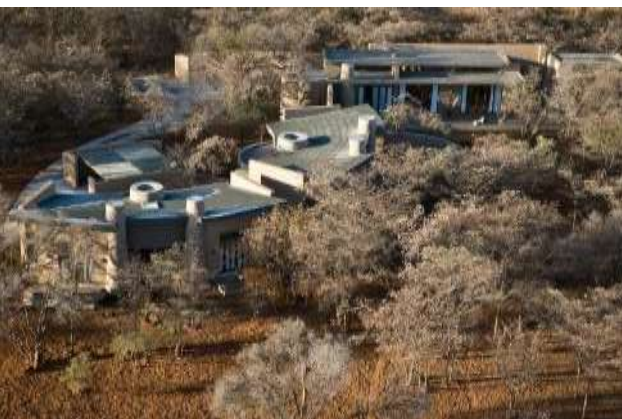
# ACCOMMODATION & LIFESTYLE

AFRICA

## Waterberg – Entabeni Accommodation

You will stay in twin bedded rooms with ensuite facilities.

There are 4, 5 and 6 bedroom units each of which has an open plan layout with lounge and dining area and a fully equipped kitchen.





## Gauteng – Fair Glen Guest House

You will be staying in twin bedded accommodation with en-suite facilities.

There is a swimming pool and outdoor seating area and the guest house has WiFi.

The guest house offers comfortable areas to relax and unwind and is based in an equestrian-themed suburb.

Ideally situated for the visits to the Johannesburg Wildlife Vet Practice and Animals in Distress.





## Meals

At Entabeni all meals are included. The students will self prepare meals as a group in one of the kitchens.

Some days lunch will be at the accommodation; other days lunch will be brought into the field to be taken as a picnic.

All meals will be provided at Fair Glen Guest House. A packed lunch will be provided if the group are not returning to the accommodation at lunch time.

Evenings are spent at leisure around the campfire.

Only Sunday will be an off day to 'chill' in camp or do extra activities.





# WEEKEND ACTIVITIES & EXCURSIONS

AFRICA

## Activities/Excursions (own cost and optional)

There will be free time/days off, where you'll be able to do some additional activities at your own cost. These are **optional**.

All activities are booked and paid for (**cash** or, sometimes, **card**) at the project.

More information will be given closer to the time. N.B Your travel insurance **must** cover you for any additional activities you choose to do.

**Any activities booked and paid for locally are not covered under GAPAfrica Project's personal liability insurance.**







**AFRICA**

# USEFUL INFORMATION

Inclusions/Exclusions  
Recommended Kit List



# WHAT'S INCLUDED

AFRICA

## What is Included?

- Flights
- Transfers to/from project
- Accommodation
- Three meals per day
- All activities as part of the project
- ATOL protection
- Airport meet/greet
- 24/7 In country support



## NOT Included

- Personal Travel Insurance\*
- Meals on travel days – before arriving & after departing from project
- Any activities not specified as part of the project
- Visas/travel documents
- Tips

\* We recommend you take out insurance as soon as your booking is confirmed



## Suggested kit list

To allow for ease of transfer to the project a soft holdall/ soft suitcase is preferred.

- Short and long sleeve t-shirts
- Long work trousers and shorts (or work/zip-off trousers)
- Hiking boots/comfortable walking shoes to work in every day
- Waterproof jacket
- Sweatshirt/Fleece (Winter months pack plenty)
- Padded jacket/windbreaker (Winter months) although it can get very cold on an open vehicle even in summer
- Socks
- Underwear
- Change of casual clothes for evenings
- Sandals / comfy shoes to wear after work hours
- Warm hat (Winter only) / Hat for sun protection (all year)
- Gloves for warmth (Winter only)
- Working gloves
- Daypack rucksack
- Surgical gloves
- Swimwear
- Sunscreen and Sunglasses
- Personal medical items
- First aid kit
- Toiletries
- Tick / Insect repellent
- Water bottle
- Good torch

### Other useful items:

- Binoculars
- Camera
- Power bank
- Stethoscope

\* All work clothes should be neutral or earth tones for working in the bush. No skimpy or bright-coloured clothing to be worn





**AFRICA**

# BOOKING YOUR ADVENTURE

Your next steps to the trip of a  
lifetime!



# WHY SHOULD I TRAVEL?

AFRICA

## What do previous travellers say about the Waterberg Wildlife and Veterinary Course – Entabeni?



"Everything **exceeded** my expectations, and the trip was **life-changing**."



"I have returned home feeling more **confident** and staying at Entabeni really developed my **practical skills**."



We got the **opportunity** to take part in practicals and interventions too, it was **incredible**."

Reference: GAP Africa Projects Post Project Trip Questionnaire 23/24



# BOOKING YOUR ADVENTURE

AFRICA

## Dates for veterinary professional 2026 trips

Trip	Travel dates	Reserve dates	Days at reserve	Cost
4718	Depart 5 <sup>th</sup> Apr	6 <sup>th</sup> –18 <sup>th</sup> Apr	12	£2,795
	Return 19 <sup>th</sup> Apr			
4720	Depart 2 <sup>nd</sup> Aug	3 <sup>rd</sup> –15 <sup>th</sup> Aug	12	TBC
	Return 16 <sup>th</sup> Aug			

### Trip cost:

£2,795 – £3,195 est.

Price dependent on flight prices  
& based on a group of 14

### Key booking deadlines are:

1. Return of booking forms or online application by: **Flexible deadline**
2. Deposit of £300 to confirm placement (within two – four weeks of provisional booking submission)
3. 1<sup>st</sup> Instalment payment of **50% – due 16 weeks** before departure: Trip 1: 14<sup>th</sup> Dec 25 ; Trip 2: 12<sup>th</sup> Apr 26
4. Balance payment **due 8 weeks** before departure: Trip 1: 8<sup>th</sup> Feb 26; Trip 2: 7<sup>th</sup> Jun 26
5. E tickets will be issued 2 weeks prior to departure and emailed to participants



## AFRICA



# BOOKING FORM

AFRICA

Scan the QR code or to access the trip booking form

Trip 1 – 4718 booking form:



Trip 2 – 4720 booking form:





## Gap's 'Sustainability & Social, Economic Responsibility'

**Local employment from rural communities** – our project partners employ a high percentage of staff from local communities. They advocate training to advance careers in hospitality, wildlife and conservation.

**Low environmental impact camps** – our project bush camps are built with minimal impact on the environment. Resources from the surrounding area are utilised for buildings, water is (where possible) pumped from local river sources and green energy supplies, such as solar are championed.

**Community donations and support** – we encourage all our international study groups to be proactive in donation collections and arrange for excess baggage for said donations to be taken out to South Africa in support of the local communities.

**Move Africa, supporting young females** – 3 in 10 girls in South Africa miss a week of school every month because they cannot afford basic sanitary products. Our project partners work with Move Africa alongside their partner NGOs, to distribute menstrual cups to the local communities and provide education workshops.

**Rhino Art** – Project rhino realises the enormous responsibility the youth must ensure our wildlife is protected for many generations to come. They ensure they can reach and educate as many kids as possible through Rhino Art, using art workshops to teach about conservation. This initiative is supported by our local project partners.

**Food/crop education** – our project partners encourage food and crop education to rural communities, where cost of living to low-income families and distance travelled to obtain basic resources can prove problematic. Projects include community allotments and providing education on best practice for crop rotations, harvest seasons and nutrition.

**Recycling workshops** – Litter, and in particular plastics, is a major issue and threat to the ecosystem in Southern Africa. Rural communities have limited waste removal available, and it is therefore a problem escalating at an alarming rate. Recycling workshops are provided through local schools to help educate children on the importance of correctly disposing of litter and recycling plastics.





**GLOBAL** reach. **ADVENTURE** for all. **PROJECTS** to inspire.

Explore our network of Global Adventure Projects:



**GLOBALADVENTUREPROJECTS.COM**

