



# INFORMATION PACK

## Bath College



# Waterberg

## Wildlife & Veterinary

### Course – Entabeni



**GLOBAL** reach. **ADVENTURE** for all. **PROJECTS** to inspire.

# TRIP OVERVIEW

AFRICA

## Bath College – Booking Reference 4678

### Travel Dates:

5<sup>th</sup> – 18<sup>th</sup> July 2026

### Flights:

Flight No	Flight Date	Dept.	Dept. Time	Arr.	Arr. Time
VS449	05/07/2026	London Heathrow (LHR)	22:15	Johannesburg (JNB)	10:05 + 1 Day
VS450	18/07/2026	Johannesburg (JNB)	20:15	London Heathrow (LHR)	06:20 + 1 Day

\*Always check the flight timings on your final documents

**Baggage Allowance** – 1 piece checked baggage @ 23kgs, 1 piece hand baggage @ 10kgs max dimensions 56x36x23 cms

### Project:

Waterberg Wildlife & Veterinary Course – Entabeni





AFRICA

# ABOUT THE PROJECT

Project overview and location



# ABOUT THE WATERBERG

AFRICA

## Entabeni Safari Conservancy

- 22 000 Hectare Privately Managed Game Reserve
- Forming part of the Waterberg Biosphere (662 059 ha)
- Work alongside the conservation team including:
  - Wildlife Vets
  - Conservation Researchers
  - Ecologists
  - Anti Poaching Unit
- Located in a Malaria free zone
- Proclaimed Protected Conservation Area
- Savannah Eco System
- Student Camp Accommodation

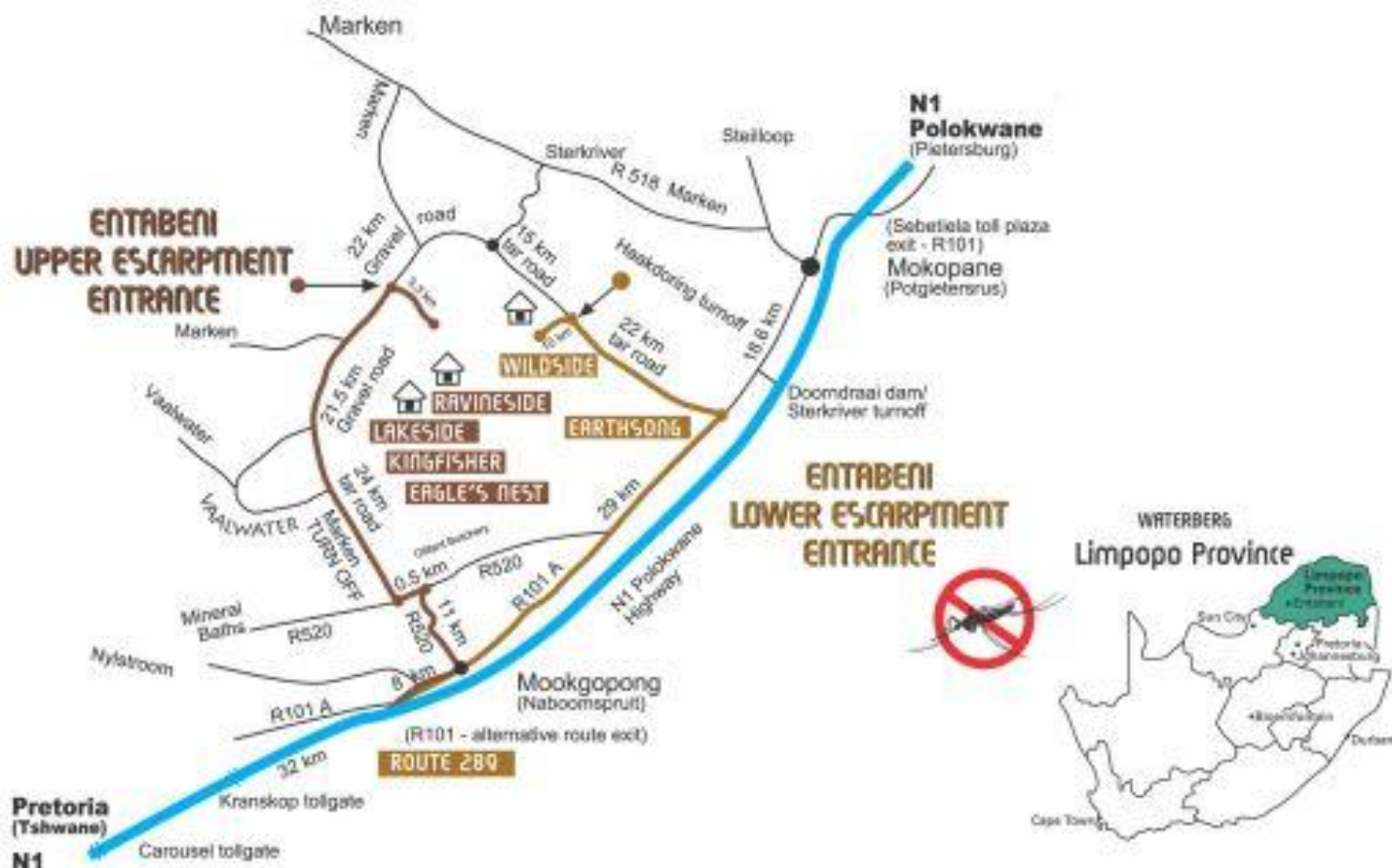


# ABOUT ENTABENI

AFRICA

## Entabeni Safari Conservancy – Location

- South Africa a world leader in conservation
- Malaria free Waterberg Plateau







AFRICA

# ABOUT THE PROJECT

Our conservation work  
in more detail

# ABOUT THE PROJECT

AFRICA

## Course Fundamentals and Structure

- Gain understanding of wildlife research and management that govern veterinary practices on reserve
- A Wildlife Vets role and responsibilities
- Expose participants to behind-the-scenes wildlife conservation and veterinary work
- Immobilisation and capture techniques used for various wildlife species
- Rhino protection through Veterinary Management
- Conservation Research
- Wildlife management and conservation challenges
- Appreciate the importance of herd health and intensive wildlife breeding
- Gain experience of a variety of veterinary wildlife and conservation working environments
- Vegetation types suitable for wildlife
- Tracks and tracking of Big Five
- Waterberg Wild Dog Project
- Rhino Rehabilitation



# ABOUT THE PROJECT

AFRICA

## Course Fundamentals and Structure

### WEEK 1

Introduction to Entabeni Safari Conservancy and Research Projects

Introduction to Wildlife Veterinary work in the Context of African Wildlife (Dr Zoe Glyphis – Local Wildlife Vet) – 1 Day

Rhino orphanage – assist with orphaned rhino calves

Time spent with research team conducting conservation activities – 4 Days

### Week 2

Time spent with research team conducting conservation activities – 3 Days

Further insight into Wildlife Veterinary work (Dr Pierre Bester) – 1 Day

Build up to possible intervention and planning

Specialist Wildlife Vet to conduct intervention with group

(Dr Pierre Bester) – 1 Day





# ABOUT THE PROJECT

AFRICA

## Dr Pierre Bester – Wildlife Veterinarian – Rhino Expert

Dr Bester has a mixed animal practice, small and large domestic as well as wild animals where the scope of his work includes the immobilisation, treatment and translocation of African wildlife; specialising in rhino.

He's been involved with the immobilisation and translocation of thousands of rhinos, as well as countless other species.



ANY QUESTIONS?

[INFO@GAPAFRICAPROJECTS.COM](mailto:INFO@GAPAFRICAPROJECTS.COM) | +44 (0)207 1937819

Project Presentation 9



# ABOUT THE PROJECT

AFRICA

## Dr Zoe Glyphis – Wildlife Veterinarian – Predator Specialist

Dr Zoe Glyphis has become one of South Africa's leading predator specialists and is at the forefront of veterinary medicine and veterinary assistance of wild dog, hyena and cheetah conservation across South Africa.

She is assisting several NGO groups and organizations with their efforts to increase predator ranges and to establish safe and genetically viable populations in new conservation areas.



ANY QUESTIONS?

[INFO@GAPAFRICAPROJECTS.COM](mailto:INFO@GAPAFRICAPROJECTS.COM) | +44 (0)207 1937819

Project Presentation 10



# ABOUT THE PROJECT

AFRICA

## Learning about a Veterinarians role in the field



ANY QUESTIONS?

INFO@GAPAFRICAPROJECTS.COM | +44 (0)207 1937819

Project Presentation 11



# ABOUT THE PROJECT

AFRICA

## The Rhino Orphanage

The Rhino Orphanage was the first-ever specialised, non-commercial centre dedicated to the rescue, rehabilitation, raising and release of orphaned rhinos back into the wild.

Although new-born rhinos can weigh up to 50kgs, they are essentially “helpless” and require protection so that they may survive and ultimately thrive.





# ABOUT THE PROJECT

AFRICA

## Introduction of Darting Techniques

Learn the basic principles for darting wildlife.

Each student will have the opportunity to use the gas powered dart gun at the range.





# ABOUT THE PROJECT

AFRICA

## Introduction to Pharmacology



ANY QUESTIONS?

[INFO@GAPAFRICAPROJECTS.COM](mailto:INFO@GAPAFRICAPROJECTS.COM) | +44 (0)207 1937819

Project Presentation 14



# ABOUT THE PROJECT

AFRICA

## Bush Skills – Bush Walks, Tracking Wildlife



ANY QUESTIONS?

[INFO@GAPAFRICAPROJECTS.COM](mailto:INFO@GAPAFRICAPROJECTS.COM) | +44 (0)207 1937819

Project Presentation 15



# ABOUT THE PROJECT

AFRICA

## Monitoring the Entabeni Rhino Population

Behavioural observations, photos and GPS locations are recorded to document where the animals are occurring; keeping tabs on the localities and activities of White and Black Rhino on the reserve.

Importantly also monitor body condition, injuries, mating, calving, behaviour, herd structure etc.





# ABOUT THE PROJECT

AFRICA

## Research – Habitat and Prey Selection: Predators



ANY QUESTIONS?

[INFO@GAPAFRICAPROJECTS.COM](mailto:INFO@GAPAFRICAPROJECTS.COM) | +44 (0)207 1937819

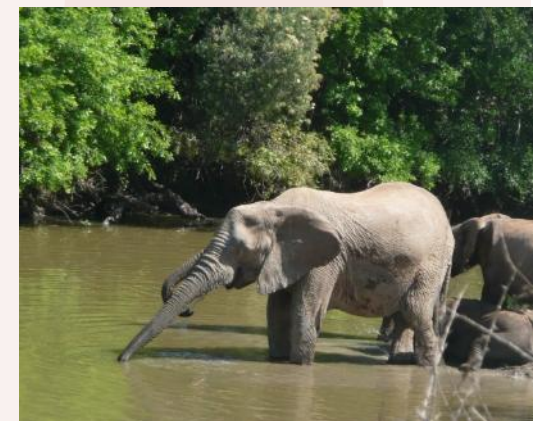
Project Presentation 17



# ABOUT THE PROJECT

AFRICA

## Research – Elephant Monitoring & Fertility Study



ANY QUESTIONS?

[INFO@GAPAFRICAPROJECTS.COM](mailto:INFO@GAPAFRICAPROJECTS.COM) | +44 (0)207 1937819

Project Presentation 18



# ABOUT THE PROJECT

AFRICA

## Monitoring Herbivore Condition and Health



ANY QUESTIONS?

[INFO@GAPAFRICAPROJECTS.COM](mailto:INFO@GAPAFRICAPROJECTS.COM) | +44 (0)207 1937819

Project Presentation 19



# ABOUT THE PROJECT

AFRICA

## Camera Trap – Research and Study



ANY QUESTIONS?

[INFO@GAPAFRICAPROJECTS.COM](mailto:INFO@GAPAFRICAPROJECTS.COM) | +44 (0)207 1937819

Project Presentation 20



# ABOUT THE PROJECT

AFRICA

## Anti-Poaching Unit



ANY QUESTIONS?

[INFO@GAPAFRICAPROJECTS.COM](mailto:INFO@GAPAFRICAPROJECTS.COM) | +44 (0)207 1937819

Project Presentation 21



# ABOUT THE PROJECT

AFRICA

## Night Game Drives



ANY QUESTIONS?

[INFO@GAPAFRICAPROJECTS.COM](mailto:INFO@GAPAFRICAPROJECTS.COM) | +44 (0)207 1937819

Project Presentation 22



# ABOUT THE PROJECT

AFRICA

## Rhino – Fitting of Prosthetics

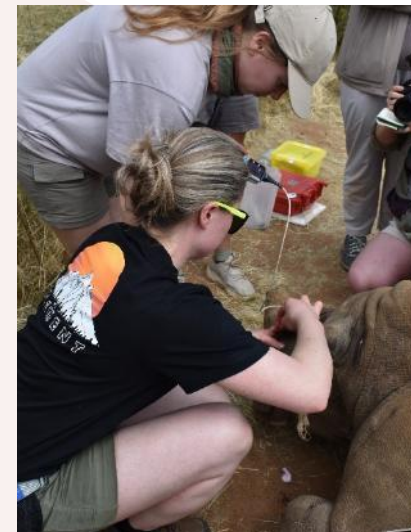




# ABOUT THE PROJECT

AFRICA

## Rhino – Sinus Infection



ANY QUESTIONS?

[INFO@GAPAFRICAPROJECTS.COM](mailto:INFO@GAPAFRICAPROJECTS.COM) | +44 (0)207 1937819

Project Presentation 24



# ABOUT THE PROJECT

AFRICA

## Lion immobilisation & collaring/removal



ANY QUESTIONS?

[INFO@GAPAFRICAPROJECTS.COM](mailto:INFO@GAPAFRICAPROJECTS.COM) | +44 (0)207 1937819

Project Presentation 25



# ABOUT THE PROJECT

AFRICA

## Cheetah Relocation – Endangered Wildlife Trust (EWT)



ANY QUESTIONS?

[INFO@GAPAFRICAPROJECTS.COM](mailto:INFO@GAPAFRICAPROJECTS.COM) | +44 (0)207 1937819

Project Presentation 26



# ABOUT THE PROJECT

AFRICA

## Necropsies



ANY QUESTIONS?

[INFO@GAPAFRICAPROJECTS.COM](mailto:INFO@GAPAFRICAPROJECTS.COM) | +44 (0)207 1937819

Project Presentation 27



# ABOUT THE PROJECT

AFRICA

## Free-roaming Waterberg Wild Dog – Talks



ANY QUESTIONS?

[INFO@GAPAFRICAPROJECTS.COM](mailto:INFO@GAPAFRICAPROJECTS.COM) | +44 (0)207 1937819

Project Presentation 28



# ABOUT THE PROJECT

AFRICA

## Possible Lectures & Debate

- Drugs used in wildlife medicine
- Calculating doses in wildlife
- Logistics of wildlife transportation: customised vehicles, crates and equipment
- The Game Trade-Auction and value of livestock
- Game capture systems
- Darting wildlife
- Boma management and rehabilitation
- Orphaned Rhino rehabilitation
- Parasite control
- Managing game reserves and Land Capacity Model
- Species control – predator pits
- State veterinary disease control in practice
- Documentation required: Red Cross Permits







AFRICA

# ACCOMODATION & LIFESTYLE

Living in the African Bush



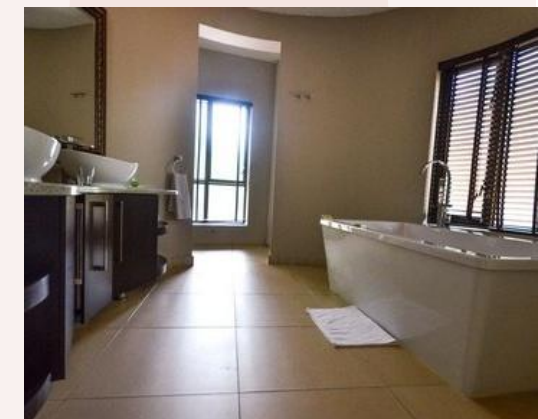
# ACCOMMODATION & LIFESTYLE

AFRICA

## Entabeni Villas

The accommodation is in twin bedded rooms within a unit. There are a variety of 3, 4, 5 and 6 Bedroom Self-Catering Units.

Each unit offers a spacious and open plan layout, with a lounge and dining area as well as a fully equipped kitchen..



ANY QUESTIONS?

[INFO@GAPAFRICAPROJECTS.COM](mailto:INFO@GAPAFRICAPROJECTS.COM) | +44 (0)207 1937819

Project Presentation 31



## Meals

All meals are included; the students will self prepare meals as a group in one of the kitchens.

Some days lunch will be at the accommodation; other days lunch will be brought into the field to be had as a picnic.

Evenings are spent at leisure around the campfire.

Only Sunday will be an off day to 'chill' in camp or do extra activities.





# ACCOMMODATION & LIFESTYLE

AFRICA

## Sunday additional activities (own cost)

Horseback Safari Max 4 people at a time

- Horse Riding (1 hour) R590 pp
- Horse Riding (2 Hours) R1090 pp
- **Sunset Cruise** (Includes finger foods & softdrinks ) R690 pp
- Cultural Foundation Drumming session R600 pp
- **Guided Bush Walk** (Non Predator) R300 pp
- **Guided Bush Walk** (Predator) R800 pp

- **Bicycle Rental** – 4 hours at Clubhouse R120 pp
- **Spa massages** between R320 – R830 pp
- **Marimba Band and Pedi Dancers** (Group activity enquire for rates)
- **Game Drive and Boat Cruise** with Lunch at Lakeside R890 pp
- **Picnic Lunch** at Yellow-wood Gorge Mountain Pool R890 pp
- **Stargazing** R790 pp

**Note: all activities and costs are subject to change**







AFRICA

# USEFUL INFORMATION

Inclusions/Exclusions  
Recommended Kit List



# WHAT'S INCLUDED

AFRICA

## What is included?

- Flights
- Transfers to/from project
- Accommodation
- Three meals per day
- All activities as part of the project
- ATOL protection
- Airport meet/greet
- 24/7 In country support



## NOT Included

- Personal Travel Insurance \*
- Meals on travel days – before arriving & after departing from project
- Any activities not specified as part of the project
- Weekend activities
- Visa's/travel documents
- Tips

\* We recommend you take out insurance as soon as your booking is confirmed



## Suggested kit list

To allow for ease of transfer to the project a soft holdall/ soft suitcase is preferred.

- Short and long sleeve t-shirts
- Long work trousers and shorts (or work/zip-off trousers)
- Hiking boots/comfortable walking shoes to work in every day
- Waterproof jacket
- Sweatshirt/Fleece (Winter months pack plenty)
- Padded jacket/windbreaker (Winter months) although it can get very cold on an open vehicle even in summer
- Socks
- Underwear
- Change of casual clothes for evenings
- Sandals / comfy shoes to wear after work hours
- Warm hat (Winter only) / Hat for sun protection (all year)
- Gloves for warmth (Winter only)
- Working gloves
- Daypack rucksack
- Surgical gloves
- Swimwear
- Sunscreen and Sunglasses
- Personal medical items
- First aid kit
- Toiletries
- Tick / Insect repellent
- Water bottle
- Good torch

### Other useful items:

- Binoculars
- Camera
- Power bank
- Stethoscope

\* All work clothes should be neutral or earth tones for working in the bush. No skimpy or bright-coloured clothing to be worn





**GLOBAL** reach. **ADVENTURE** for all. **PROJECTS** to inspire.

Explore our network of Global Adventure Projects:



[GLOBALADVENTUREPROJECTS.COM](http://GLOBALADVENTUREPROJECTS.COM)

