



BATH COLLEGE PROJECT INFORMATION PACK

The background is a collage of three images. On the left, two people are crouching in a grassy field, attending to a small animal. In the center, a circular inset shows a sunset over a body of water with trees. On the right, there is a close-up of a kudu antelope's head.

Waterberg Wildlife & Veterinary Course Entabeni (Vet Nurses)

AFRICA

GLOBAL reach. **ADVENTURE** for all. **PROJECTS** to inspire.

TRIP OVERVIEW

AFRICA

Bath College – Booking Reference 4678

Travel Dates:

5th July 2026 – 18th July 2026

Flights:

Flight No	Flight Date	Dept.	Dept. Time	Arr.	Arr. Time
VS449	05/07/2026	London Heathrow (LHR)	22:15	Johannesburg (JNB)	10:15 + 1 Day
VS450	18/07/2026	Johannesburg (JNB)	20:15	London Heathrow (LHR)	06:20 + 1 Day

*Always check the flight timings on your final documents

Baggage Allowance – 1 piece checked baggage @ 23kgs, 1 piece hand baggage @ 10kgs max dimensions 56x36x23 cms

Project:

Waterberg Wildlife & Veterinary Course – Entabeni

Trip Cost:

£2795.00 per person

£300.00 deposit

£1247.50 Instalment due 16/03/2026

£1247.50 Balance due 11/05/2026



AFRICA

PROJECT LOCATION

The Waterberg
overview

ABOUT THE WATERBERG

AFRICA

A place that promotes the connection between people and nature

The Waterberg contains pristine habitats, abundant bird and wildlife and has a natural unspoilt beauty. The Waterberg is an escarpment of massive sandstone buttresses and outcrops, incorporating many rivers, streams and wetlands, stretching for 150 km in a long arc.

The Waterberg has many special and unique characteristics which is why UNESCO approved the area for biosphere reserve status in 2001.

The Waterberg is a critical conservation area for; African wild dogs, with the last free-roaming pack in South Africa; black and white rhino, with the third largest population within South Africa; and the Cape Vulture, with the largest colony of 800 breeding pairs.



ABOUT ENTABENI

AFRICA

ENTABENI SAFARI CONSERVANCY

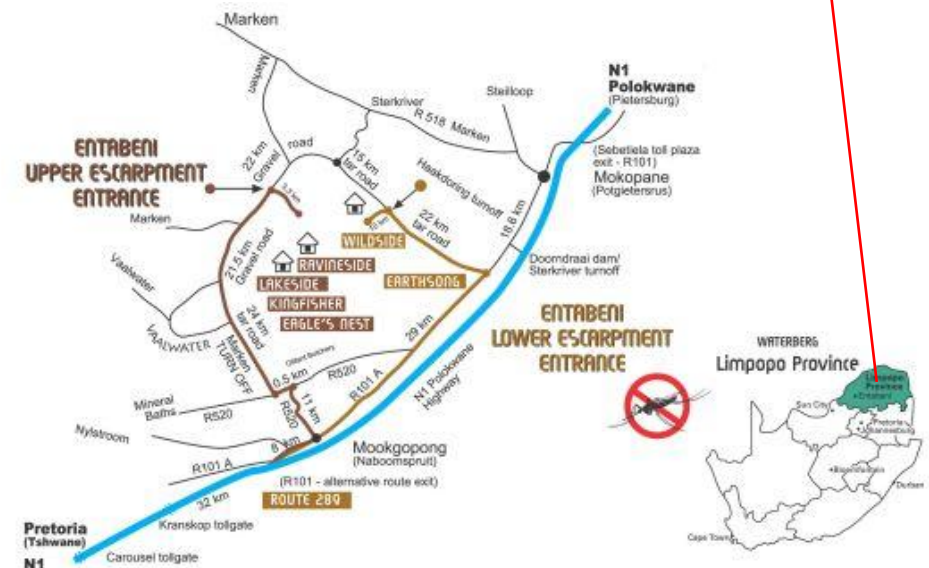
Location

The Waterberg Wildlife and Veterinary Course – Entabeni is based at the 22,000-hectare Entabeni Safari Conservancy in the Limpopo Province of South Africa.

Located a pleasant 4 hour drive from Johannesburg; in the **malaria-free** area of the Waterberg, Limpopo Province

Entabeni is set within a tranquil, natural setting boasting changing vistas, diverse eco-systems and a breath-taking mountainous backdrop. Entabeni is the integration of a 22,000 hectare Big 5 Game Reserve, a resort and luxurious lodges.

It boasts spectacular scenery, with mountains, waterfalls and unspoilt ravines.





AFRICA

ABOUT THE PROJECT

Our conservation work
in more detail

ABOUT THE WATERBERG

AFRICA

Your two project locations

Your trip is split between two locations, in two neighbouring provinces of South Africa. You will first observe a focused wildlife veterinary practice on a reserve in the Waterberg, Limpopo Province (**Entabeni Safari Conservancy**) before travelling to Gauteng Province where you will have a tour of the Johannesburg Wildlife Vet – the only small animal practice in the country that only works on wildlife; assist with some shelter and community cases, learn about a K9 conservation unit and participate in lectures and debates . Project locations and duration are as follows:

Itinerary

8 Nights

Entabeni Safari Conservancy – Waterberg – Limpopo Province

4 Nights

Kyalami, Midrand and surrounding areas – Gauteng Province



AFRICA

ABOUT THE PROJECT: ENTABENI SAFARI CONSERVANCY

Our conservation work
in more detail

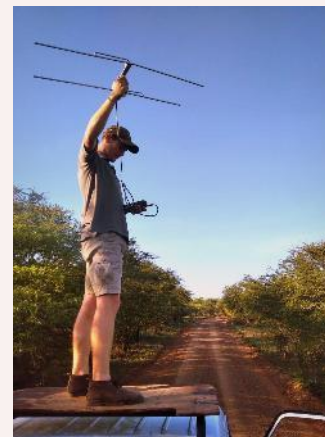
Waterberg Wildlife and Veterinary Course – Entabeni

This course provides the opportunity for hands-on practical wildlife experience for pre-vet/vet nurses/technicians or those studying in the veterinary field.

Based at the reserve's student camp working directly with the monitoring team; this department runs and manages the day-to-day decisions and monitoring of the wildlife and ecosystem of the reserve.

The team and their work are crucial to the management and welfare of all wildlife on the reserve, as they monitor the animals' conditions, herd structures, locations and behaviours.

Time will be spent working with the reserve's veterinarian and other local wildlife vets with whom the team work.



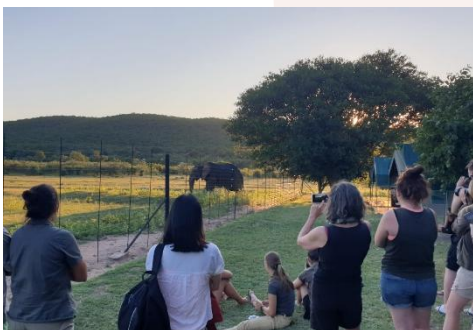
ABOUT THE PROJECT

AFRICA

Entabeni Safari Conservancy (8 Nights)

- Introduction to Entabeni Safari Conservancy and Research Projects
- Rhino orphanage – assist with orphaned rhino calves
- Time spent with the research team conducting conservation activities
- Wildlife Veterinary work and intervention (Dr Pierre Bester)
- Build up to possible intervention and planning

It's important to remember that wildlife does not work to an agenda, therefore activities may change at short notice!



ABOUT THE PROJECT

AFRICA

Dr Pierre Bester – Wildlife Veterinarian

Rhino orphanage veterinarian, Dr Pierre Bester has a mixed animal practice treating large and small domestic animals as well as wildlife. The main scope of his work includes the immobilisation, treatment, and translocation of African wildlife, including megaherbivore: rhinos and elephants.

He has been involved with the immobilisation and translocation of thousands of rhinos, as well as countless other species.



The Rhino Orphanage

The Rhino Orphanage was the first-ever specialised, non-commercial centre dedicated to the rescue, rehabilitation, raising and release of orphaned rhinos back into the wild.

Although newborn rhinos can weigh up to 50kgs, they are essentially “helpless” and require protection so that they may survive and ultimately thrive.

Rhino calves and rhino mothers are closely bonded. Rhino young are fiercely protected by their mothers in the wild, so when a rhino mother is killed, the rhino orphan becomes particularly vulnerable, and their longevity is endangered. Under normal circumstances, rhino calves will stay with their mothers for around 3 years. For this reason, the rhino orphans in their care typically require the same intensity and timeframe of nurturing from the carers.



The background image shows two people, likely conservationists, working on a lion in a natural savanna environment. One person, wearing a white cap and blue gloves, is using a tool on the lion's head. The other person, wearing sunglasses and a light blue shirt, is assisting. The lion is lying down, wearing a red collar. A blue cooler is visible in the background. The scene is set against a backdrop of a savanna landscape with a sunset or sunrise sky.

AFRICA

ABOUT THE PROJECT: KYALAMI, MIDRAND AND SURROUNDING AREAS

Our conservation work
in more detail

ABOUT THE PROJECT

AFRICA

Kyalami, Midrand and surrounding areas – Gauteng (4 Nights)

- Introduction to Wildlife Veterinary work in the Context of African Wildlife (Dr Zoe Glyphis – Local Wildlife Vet)
- Visit to Johannesburg Wildlife Veterinary hospital.
- Assist with some animal shelter and community cases
- Assist with a K9 conservation unit.
- Dart shooting practice

It's important to remember that wildlife does not work to an agenda, therefore activities may change at short notice!



ABOUT THE PROJECT

AFRICA

Dr Zoe Glyphis – Wildlife Veterinarian – Predator Specialist

Dr Zoe Glyphis has become one of South Africa's leading predator specialists and is on the forefront with veterinary medicine and veterinary assistance of wild dog, hyena and cheetah conservation all over South Africa.

She is helping and assisting several NGO groups and organizations with their efforts to increase predator ranges and to establish safe and genetically viable populations in new conservation areas.



ABOUT THE PROJECT

AFRICA

Introduction of Darting Techniques

Learn the basic principles for darting wildlife.

Each student will have the opportunity to use the gas powered dart gun at the range.



ABOUT THE PROJECT

AFRICA

Possible Lectures & Debate

- Drugs used in wildlife medicine
- Calculating doses in wildlife
- Logistics of wildlife transportation: customised vehicles, crates and equipment
- The Game Trade-Auction and value of livestock
- Game capture systems
- Darting wildlife
- Boma management and rehabilitation
- Orphaned Rhino rehabilitation
- Parasite control
- Managing game reserves and Land Capacity Model
- Species control – predator pits
- State veterinary disease control in practice
- Documentation required: Red Cross Permits



ABOUT THE PROJECT

AFRICA

Kyalami – Johannesburg Wildlife Vet

Johannesburg Wildlife Vet is a registered wildlife veterinary hospital and a rehabilitation centre that rescues, rehabilitates and releases indigenous wildlife in South Africa.

Specialising in treating sick, injured and orphaned animals, this non-profit company provides expert care while promoting conservation through education and research.

Johannesburg Wildlife Vet exclusively treats, rehabilitates, releases and protects small to medium indigenous wildlife, free of charge. The species treated range from the most common to the highly endangered and include all mammals, birds, amphibians, reptiles and even arachnids.

It is lead by Dr Karin Lourens who has been a practicing veterinarian for 22 years with a specific interest in wildlife veterinary medicine and wildlife rehabilitation of South African species.

Watch this NETFLIX [documentary](#), about a baby pangolin embarking on a journey back to the wild, featuring Johannesburg Wildlife Veterinary Hospital.



ABOUT THE PROJECT

AFRICA

Kyalami – Society for Animals in Distress

Vet care is provided by Vets, Vet Nurses, Animal Health Technicians and Animal Welfare Assistants.

The organisation's focus is to provide access to veterinary care for all, to serve vulnerable communities and animal care organisations.

Students will assist professional Masterton method practitioner and veterinarians at the rescue centre with horses, dogs, cats and other small animals.

The animals have been rescued from impoverished circumstances and are rehabilitated to be rehomed.



ABOUT THE PROJECT

AFRICA

Kyalami –Pit-Track K9 antipoaching unit

Pit-Track is a registered NPC Non-Profit Company specialising in K9 Conservation and Anti-Poaching, made up of highly skilled, and dedicated operators,, who have devoted their lives to the protection of wildlife.

Pit-Track has operated extensively on anti-poaching operations and has continued to remain in the field on the frontline of the war against poaching.

Students will meet the K9 antipoaching team. A talk about the poaching crisis will be delivered as well as a K9 demo.

Students will have the opportunity to assist these working dogs with any physio needs.





AFRICA

ACCOMMODATION & LIFESTYLE

Life in the African Bush

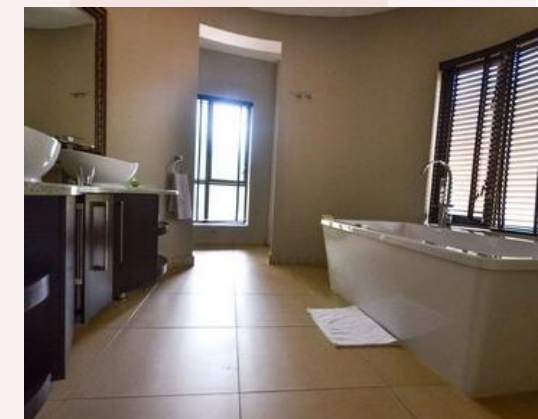
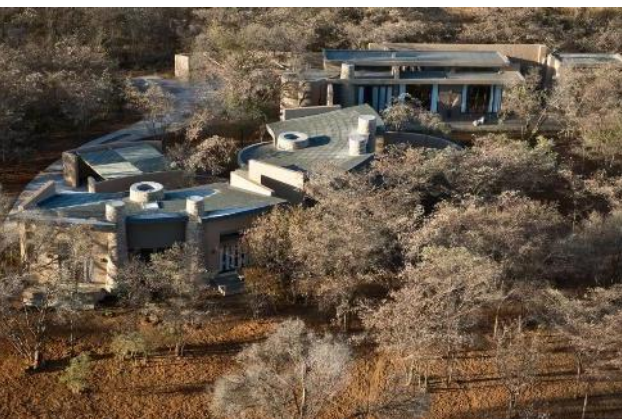
ACCOMMODATION & LIFESTYLE

AFRICA

Waterberg – Entabeni Accommodation

You will stay in twin bedded rooms with ensuite facilities.

There are 4, 5 and 6 bedroom units each of which has an open plan layout with lounge and dining area and a fully equipped kitchen.



ACCOMMODATION

AFRICA

Gauteng – Fair Glen Guest House

You will be staying in twin bedded accommodation with en-suite facilities.

There is a swimming pool and outdoor seating area and the guest house has WiFi.

The guest house offers comfortable areas to relax and unwind and is based in an equestrian-themed suburb.

Ideally situated for the visits to the Johannesburg Wildlife Vet Practice and Animals in Distress.



Meals

At Entabeni all meals are included. The students will self prepare meals as a group in one of the kitchens.

Some days lunch will be at the accommodation; other days lunch will be brought into the field to be taken as a picnic.

All meals will be provided at Fair Glen Guest House. A packed lunch will be provided if the group are not returning to the accommodation at lunch time.

Evenings are spent at leisure around the campfire.

Only Sunday will be an off day to 'chill' in camp or do extra activities.



WEEKEND ACTIVITIES & EXCURSIONS

AFRICA

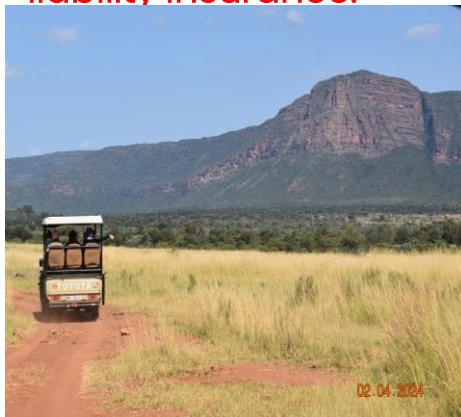
Activities/Excursions (own cost and optional)

There will be free time/days off, where you'll be able to do some additional activities at your own cost. These are optional.

All activities are booked and paid for (cash or, sometimes, card) at the project.

More information will be given closer to the time. N.B Your travel insurance **must** cover you for any additional activities you choose to do.

Any activities booked and paid for locally are not covered under GAPAfrica Project's personal liability insurance.





AFRICA

USEFUL INFORMATION

Inclusions/Exclusions
Recommended Kit List

WHAT'S INCLUDED

AFRICA

What is included?

- Flights
- Transfers to/from project
- Accommodation
- Three meals per day
- All activities as part of the project
- ATOL protection
- Airport meet/greet
- 24/7 In country support



NOT Included

- Personal Travel Insurance*
- Meals on travel days – before arriving & after departing from project
- Any activities not specified as part of the project
- Visas/travel documents
- Tips

* We recommend you take out insurance as soon as your booking is confirmed

Suggested kit list

To allow for ease of transfer to the project a soft holdall/ soft suitcase is preferred.

- Short and long sleeve t-shirts
- Long work trousers and shorts (or work/zip-off trousers)
- Hiking boots/comfortable walking shoes to work in every day
- Waterproof jacket
- Sweatshirt/Fleece (Winter months pack plenty)
- Padded jacket/windbreaker (Winter months) although it can get very cold on an open vehicle even in summer
- Socks
- Underwear
- Change of casual clothes for evenings
- Sandals / comfy shoes to wear after work hours
- Warm hat (Winter only) / Hat for sun protection (all year)
- Gloves for warmth (Winter only)
- Working gloves
- Daypack rucksack
- Surgical gloves
- Swimwear
- Sunscreen and Sunglasses
- Personal medical items
- First aid kit
- Toiletries
- Tick / Insect repellent
- Water bottle
- Good torch

Other useful items:

- Binoculars
- Camera
- Power bank
- Stethoscope

* All work clothes should be neutral or earth tones for working in the bush. No skimpy or bright-coloured clothing to be worn



GLOBAL reach. **ADVENTURE** for all. **PROJECTS** to inspire.

Explore our network of Global Adventure Projects:



GLOBALADVENTUREPROJECTS.COM

