



# WILBERFORCE 6<sup>TH</sup> FORM COLLEGE PROJECT PRESENTATION PACK

## KwaZulu-Natal Community Volunteering Project



**AFRICA**

**GLOBAL** reach. **ADVENTURE** for all. **PROJECTS** to inspire.

# ABOUT US:

AFRICA

## GAP Africa Projects

- We are a specialised travel company that offers academic trips and volunteering opportunities for groups and individual travellers, in a number of locations worldwide
- We pride ourselves on curating experiences which are personalised to your needs and requirements
- Our first project travelled in 2012
- Full ATOL Bonding
- Working with over 55 Colleges and Universities around the UK
- A small dedicated team in the UK and South Africa.







AFRICA

# ABOUT THE PROJECT

Overview and location  
of the project

# ABOUT YOUR PROJECT

AFRICA

## Project Location





# ABOUT YOUR PROJECT

AFRICA

## Project Location – Bonamanzi Game Reserve (12 Nights)

Your first stay will be at Bonamanzi Game Reserve a privately owned Game Reserve, 4000 hectares in size.

Your first 12 nights will be spent at this stunning location





# ABOUT YOUR PROJECT

AFRICA

## Project Location – St Lucia (3 Nights)

Your final three nights will be spent in the small coastal town of St. Lucia is situated on the northern side of the estuary.

The area is famous for its wetlands and is a fantastic opportunity to witness Crocodiles and Hippos in their natural environment.





# ABOUT YOUR PROJECT

AFRICA

## Project Rhino



ANY QUESTIONS?

[INFO@GAPAFRICAPROJECTS.COM](mailto:INFO@GAPAFRICAPROJECTS.COM) | +44 (0)207 1937819

PROJECT PRESENTATION 7



# ABOUT YOUR PROJECT

AFRICA

## Creche Refurbishment



ANY QUESTIONS?

[INFO@GAPAFRICAPROJECTS.COM](mailto:INFO@GAPAFRICAPROJECTS.COM) | +44 (0)207 1937819

PROJECT PRESENTATION 8



# ABOUT YOUR PROJECT

AFRICA

## Art Projects



ANY QUESTIONS?

[INFO@GAPAFRICAPROJECTS.COM](mailto:INFO@GAPAFRICAPROJECTS.COM) | +44 (0)207 1937819

PROJECT PRESENTATION 9



# ABOUT YOUR PROJECT

AFRICA

## Health Care Messages



ANY QUESTIONS?

[INFO@GAPAFRICAPROJECTS.COM](mailto:INFO@GAPAFRICAPROJECTS.COM) | +44 (0)207 1937819

PROJECT PRESENTATION 10



# ABOUT YOUR PROJECT

AFRICA

## Move Africa



ANY QUESTIONS?

[INFO@GAPAFRICAPROJECTS.COM](mailto:INFO@GAPAFRICAPROJECTS.COM) | +44 (0)207 1937819

PROJECT PRESENTATION 11



# ABOUT YOUR PROJECT

AFRICA

## Community Development Activities



ANY QUESTIONS?

[INFO@GAPAFRICAPROJECTS.COM](mailto:INFO@GAPAFRICAPROJECTS.COM) | +44 (0)207 1937819

PROJECT PRESENTATION 12



# ABOUT YOUR PROJECT

AFRICA

## Community Development Activities



ANY QUESTIONS?

[INFO@GAPAFRICAPROJECTS.COM](mailto:INFO@GAPAFRICAPROJECTS.COM) | +44 (0)207 1937819

PROJECT PRESENTATION 13



# ABOUT THE PROJECT

AFRICA

## Community – GAP Donation Bags



ANY QUESTIONS?

[INFO@GAPAFRICAPROJECTS.COM](mailto:INFO@GAPAFRICAPROJECTS.COM) | +44 (0)207 1937819

PROJECT PRESENTATION 14



# ABOUT YOUR PROJECT

AFRICA

## Zulu Culture Experience



ANY QUESTIONS?

[INFO@GAPAFRICAPROJECTS.COM](mailto:INFO@GAPAFRICAPROJECTS.COM) | +44 (0)207 1937819

PROJECT PRESENTATION 15



# ABOUT YOUR PROJECT

AFRICA

## Conservation Activities



ANY QUESTIONS?

[INFO@GAPAFRICAPROJECTS.COM](mailto:INFO@GAPAFRICAPROJECTS.COM) | +44 (0)207 1937819

PROJECT PRESENTATION 16



# ABOUT YOUR PROJECT

AFRICA

## Conservation Activities



ANY QUESTIONS?

[INFO@GAPAFRICAPROJECTS.COM](mailto:INFO@GAPAFRICAPROJECTS.COM) | +44 (0)207 1937819

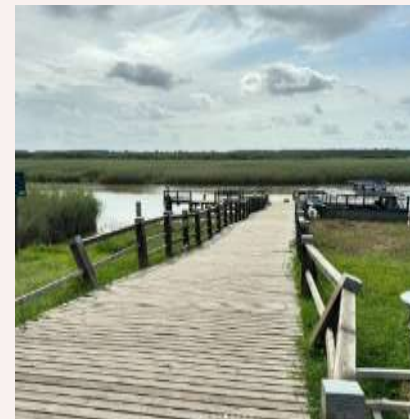
PROJECT PRESENTATION 17



# ABOUT YOUR PROJECT

AFRICA

## St Lucia Activities



ANY QUESTIONS?

[INFO@GAPAFRICAPROJECTS.COM](mailto:INFO@GAPAFRICAPROJECTS.COM) | +44 (0)207 1937819

PROJECT PRESENTATION 18



# ABOUT YOUR PROJECT

AFRICA

## St Lucia Activities



ANY QUESTIONS?

[INFO@GAPAFRICAPROJECTS.COM](mailto:INFO@GAPAFRICAPROJECTS.COM) | +44 (0)207 1937819

PROJECT PRESENTATION 19





AFRICA

# ACCOMMODATION & LIFESTYLE

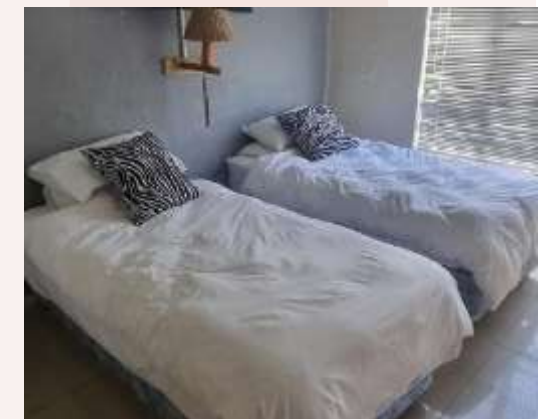
Life in Africa



# ACCOMMODATION

AFRICA

## Bundu Camp @ Bonamanzi



ANY QUESTIONS?

INFO@GAPAFRICAPROJECTS.COM | +44 (0)207 1937819

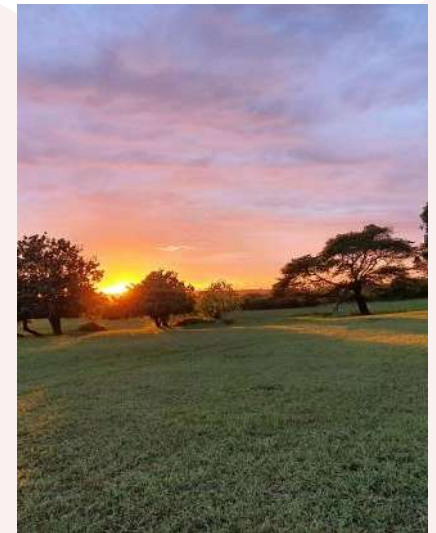
PROJECT PRESENTATION 21



# ACCOMMODATION

AFRICA

## Bundu Camp @ Bonamanzi



ANY QUESTIONS?

INFO@GAPAFRICAPROJECTS.COM | +44 (0)207 1937819

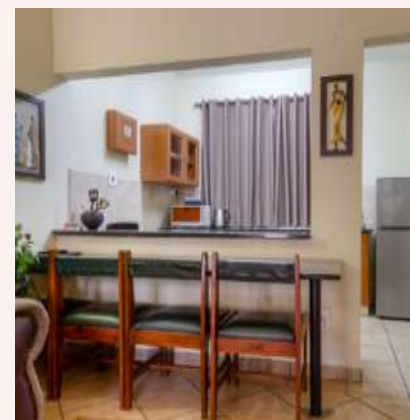
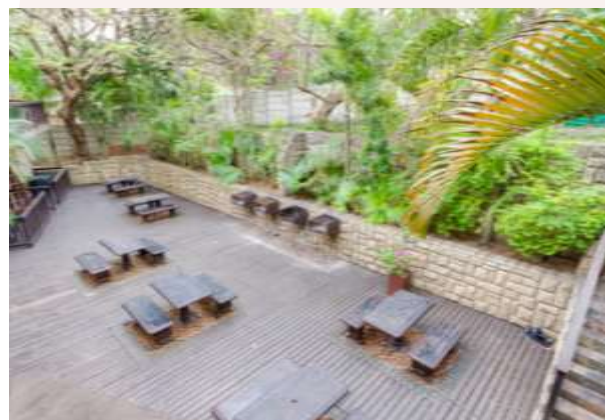
PROJECT PRESENTATION 22



# ACCOMMODATION

AFRICA

## St Lucia Coastal Accommodation



ANY QUESTIONS?

[INFO@GAPAFRICAPROJECTS.COM](mailto:INFO@GAPAFRICAPROJECTS.COM) | +44 (0)207 1937819

PROJECT PRESENTATION 23



# ACCOMMODATION

AFRICA

## Food at the project

Three meals are provided a day prepared by the kitchen staff with the exception of 1 lunch and 1 dinner in St Lucia

Breakfasts will consist of toast and cereals; lunch may include pasta, wraps, burgers, stir fry; dinners include meat, fish and vegetables with rice, potatoes or pasta.

On weekends a braai (BBQ) is often organised.

Please advise us of any dietary requirements in advance so we can ensure that you are adequately catered for.







AFRICA

# THE NEXT STEPS TO YOUR PROJECT

The next steps to the trip of a  
lifetime!



# WHY SHOULD I TRAVEL?

AFRICA

## What do previous travellers say about the KwaZulu-Natal Community Volunteering Project?



"Helping with local community projects was incredibly rewarding."



Everything **exceeded** my expectations, and the trip was **life-changing**."



"Visiting a local primary school was **amazing**, we got the **opportunity** to sing and play games with the children."

Reference: GAP Africa Projects Post Project Trip Questionnaire 23/24



# WHY SHOULD I TRAVEL?

AFRICA

## What do previous travellers say about the KwaZulu-Natal Community Volunteering Project?



"It was the most **amazing** experience I've ever had."



"I learnt so many new things that have **educated** me **beyond** classroom curriculum."



"There wasn't a single experience that didn't **amaze** me and make me feel **enriched**."

Reference: GAP Africa Projects Post Project Trip Questionnaire 23/24



# WHAT'S INCLUDED

AFRICA

## What is included?

- Flights
- Transfers to/from project
- Accommodation
- Three meals per day
- All activities as part of the project
- Airport meet/greet
- 24/7 In country support



## NOT Included

- Personal Travel Insurance \*
- Meals on travel days – before arriving & after departing from project
- Any activities not specified as part of the project
- Visas/travel documents

\* This is provided by the college. Please confirm with your college the details of what is and isn't covered.



# THE NEXT STEPS

AFRICA



## Project dates & key deadlines

### Confirmed trip dates:

Depart UK: 17<sup>th</sup> March | Arrive SA: 18<sup>th</sup> March 2026

Depart SA: 2<sup>nd</sup> April | Arrive UK: 3<sup>rd</sup> April 2026

### Key deadlines are:

- Return online booking form by TBC
- 04/03/2026 e-Tickets & final documents will be issued

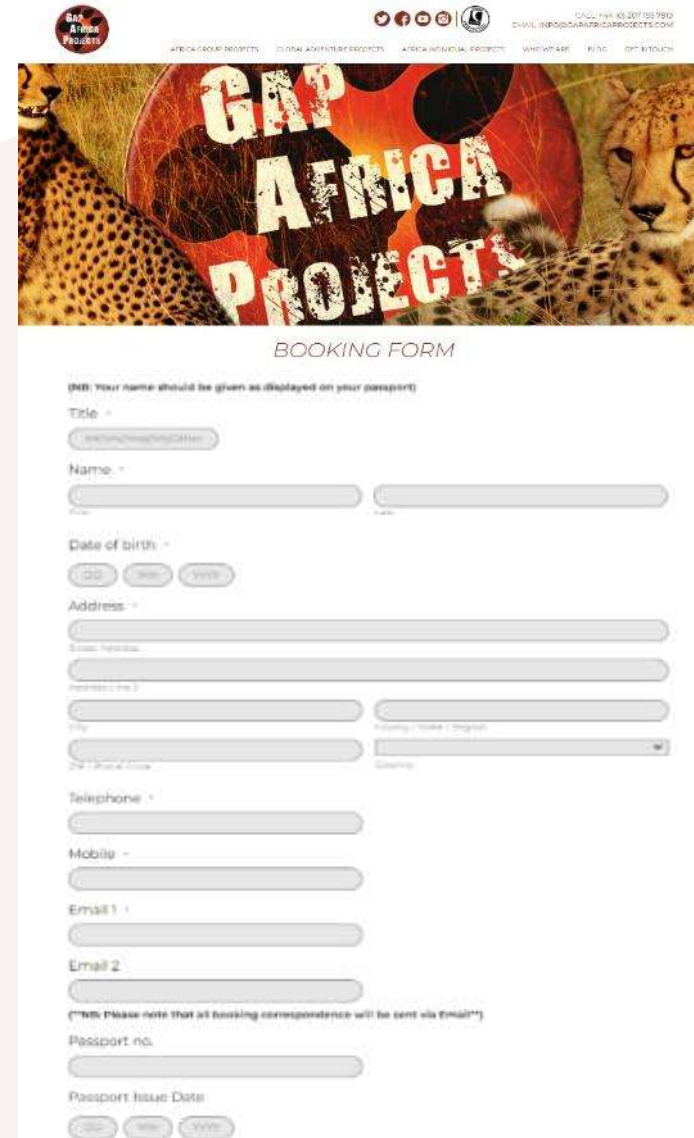


# BOOKING YOUR ADVENTURE

AFRICA

## Booking Form

- Please submit by TBC
- Passport fields not mandatory



The screenshot shows the 'GAP Africa Projects' website header with a cheetah image and the text 'GAP AFRICA PROJECTS'. Below the header is the 'BOOKING FORM' section. The form includes fields for Title, Name, Date of birth, Address, Telephone, Mobile, Email 1, Email 2, Passport no., and Passport Issue Date. A note at the bottom states: '(\*NB: Please note that all booking correspondence will be sent via Email\*)'.

**GAP Africa Projects**

AFRICA TOUR PROJECTS | GLOBAL ADVENTURE PROJECTS | AFRICA INDIVIDUAL PROJECTS | WHAT WE ARE | BLOG | GET IN TOUCH

CALL: +44 (0)207 1937819  
EMAIL: INFO@GAPAFRICAPROJECTS.COM

### BOOKING FORM

(\*NB: Your name should be given as displayed on your passport)

Title \*

Name \*

Date of birth \*

Address \*

Telephone \*

Mobile \*

Email 1 \*

Email 2 \*

(\*NB: Please note that all booking correspondence will be sent via Email\*)

Passport no.

Passport Issue Date



# THE NEXT STEPS

AFRICA

## Confirmation Documents

Confirmation documents will be issued and sent directly to you via email.

Please communicate with us with any questions relating to the field trip.

**Gap Africa Projects**

10 Oct 2022  
Ref: 23-ACA-LAZ-1212

Dear Chloe,

Thank you for agreeing to book with Gap Africa Projects as part of the Kumbi Challenge trip to Zulu Land Conservation Research. Please take the time to look through this document and check that everything is correct.

We have received your deposit payment and your payment to now confirm your place on the trip. The final balance and due date is detailed on your invoice.

Please remember that you can contact me to discuss anything in this document as well as any other aspect of your experience and I am on hand as your personal travel advisor for the entirety of your placement.

Warm regards,  
The GAP Africa Team

**Passengers Travelling**  
Miss Chloe  
Placement(s)  
Zulu Land Conservation Research (06/03/23 – 18/03/23)

**Inclusions**  
Flights, shared road transfers to and from Project, accommodation for duration, all meals and all project activities.

**Exclusions**  
Insurance: any activities undertaken that are not included in part of the project.

**Your Flight(s)**

Flight	Class	Time	From	To
05/03/2023	D	15:00	Manchester (MAN)	London Heathrow (LHR)
06/03/2023	A	10:00	London Heathrow (LHR)	London Heathrow (LHR)
07/03/2023	D	18:20	London Heathrow (LHR)	London Heathrow (LHR)
08/03/2023	A	10:00 + 1 D	London Heathrow (LHR)	London Heathrow (LHR)
10/03/2023	D	18:15	London Heathrow (LHR)	London Heathrow (LHR)
11/03/2023	A	10:00 + 1 D	London Heathrow (LHR)	London Heathrow (LHR)
13/03/2023	D	18:15	London Heathrow (LHR)	London Heathrow (LHR)
14/03/2023	A	10:00	London Heathrow (LHR)	London Heathrow (LHR)

**Your Booking**  
Travel Advice

**Names and spellings**  
It is essential that you check that all names are correct on the booking form. If there is a mistake, this will result in the booking being cancelled and you will be charged for an additional booking fee.

**Passport expiry date**  
Your passport must be valid for at least 10 days before the start of your trip and you must have a valid passport for the duration of your trip. If your passport expires within 10 days of the start of your trip, you must renew it before you travel. You must also have a valid passport for the duration of your trip.

**Passport Copies**  
It is recommended that you have good copies of your passport, driver's license and any other identification documents with you when you travel. This is for your protection and to ensure you can prove your identity if needed.

**Travel Insurance**  
It is essential that you have the appropriate travel insurance for your trip. If you do not have travel insurance, you will be responsible for any costs incurred by you or your family if you are injured or have any other incident while on your trip. This is for your protection and to ensure you can prove your identity if needed.

**Gap Africa Projects**  
20 Rye Lane  
Chislehurst  
Kent  
DA13 0JF

**ATOL Certificate**  
ATOL 10890

**CONFIRMATION INVOICE**

Gap Africa Projects  
20 Rye Lane  
Chislehurst  
Kent  
DA13 0JF  
Tel: +44 (0) 207 193 7819  
Email: info@gap-africa.co.uk

Invoice No: 23-ACA-LAZ-1212  
Booking Ref: 23-ACA-LAZ-1212

**Invoice Details**

Item	Description	Amount	Tax	Total
1	Flight	1,200.00	0.00	1,200.00
2	Accommodation	1,200.00	0.00	1,200.00
3	Meals	1,200.00	0.00	1,200.00
4	Transport	1,200.00	0.00	1,200.00
5	Insurance	1,200.00	0.00	1,200.00
6	Other	1,200.00	0.00	1,200.00
<b>Total</b>		<b>6,000.00</b>	<b>0.00</b>	<b>6,000.00</b>

**Payment Details**

Bank: Gap Africa Projects Ltd  
Account Name: Gap Africa Projects Ltd  
Account Number: 1234567890  
Sort Code: 12-34-56  
Reference: 23-ACA-LAZ-1212

**ATOL Certificate**  
ATOL 10890

This is an important document. Make sure that you take it with you when you travel.

## ATOL Certificate

This confirms that your money is protected by the ATOL scheme and that you can get home if your travel company collapses.

This certificate sets out how the ATOL scheme will protect the people named on it for the parts of their trip listed below.

**Who is protected?** Number of passengers: 10

**What is protected?**

You can find more detailed information on your booking, including price, on the confirmation you will receive from Gap Africa Projects Limited.

**Who is protecting your trip?**  
Gap Africa Projects Limited ATOL Number 10890

**Your protection**  
You are protected from when you were given this certificate to the end of your trip. If Gap Africa Projects Limited stops trading, the passengers named above will either:

- 1 complete their trip and return to the UK, or
- 2 receive a refund.

Your protection depends on the terms of the ATOL scheme (available at [www.atol.org.uk](http://www.atol.org.uk)).

If Gap Africa Projects Limited stops trading, you must follow the instructions at [www.atol.org.uk](http://www.atol.org.uk) (where there will be details of arrangements to bring people back to the UK, and information on how people can claim their money back) or you can call +44 (0) 20 7463 6360.

By issuing this ATOL Certificate, under Regulation 17 of the Civil Aviation (Air Travel Organisations' Licensing) Regulations 2012, Gap Africa Projects Ltd confirms that the trip to which it applies is sold to you with the ATOL held by the organiser named above. The ATOL scheme is run by the Civil Aviation Authority and paid for by the Air Travel Trust. To see what that is and what you can expect, together with full information on its terms and conditions go to [www.atol.org.uk](http://www.atol.org.uk). As well as the protection of the ATOL scheme, you have protection under the Package Travel Regulations. For more information see [www.direct.gov.uk](http://www.direct.gov.uk) in the Travel and Transport section.

Unique reference number	Date of issue	ATOL Certificate holder	ATOL number	Package sale
4473	10/10/2022	Gap Africa Projects Ltd	10890	

[Click here to view all available flights](#)



# BOOKING YOUR ADVENTURE

AFRICA

## Group Web Page

<https://gapafricaprojects.com/26-4749-wfc-kzg/>



## Booking Form

<https://gapafricaprojects.com/booking-form-26-4749/>



**BOOKING FORM**

*Your Global Adventure Starts here!*

Please use the form below to submit your provisional booking to your selected project. You have the option to pay your initial deposit with the submission of your booking form, or we will contact you for payment once your project placement has been secured.

If you'd like to contact us to ask any initial questions or find out more about what project you'd like to go on and when, you can get also get in touch using our short [enquiry form](#), or by calling +44 (0) 207 193 7819.

(NB: Your name should be given as displayed on your passport)

Title \*

Name \*

Date of birth \*

Address \*



## Sustainability & Social, Economic Responsibility

**Local employment from rural communities** – our project partners employ a high percentage of staff from local communities. They advocate training to advance careers in hospitality, wildlife and conservation.

**Low environmental impact camps** – our project bush camps are built with minimal impact on the environment. Resources from the surrounding area are utilised for buildings, water is (where possible) pumped from local river sources and green energy supplies, such as solar are championed.

**Community donations and support** – we encourage all our international study groups to be proactive in donation collections and arrange for excess baggage for said donations to be taken out to South Africa in support of the local communities.

**Move Africa, supporting young females** – 3 in 10 girls in South Africa miss a week of school every month because they cannot afford basic sanitary products. Our project partners work with Move Africa alongside their partner NGOs, to distribute menstrual cups to the local communities and provide education workshops.

**Rhino Art** – Project rhino realises the enormous responsibility the youth have to ensure our wildlife is protected for many generations to come. They ensure they can reach and educate as many kids as possible through Rhino Art, using art workshops to teach about conservation. This initiative is supported by our local project partners.

**Food/crop education** – our project partners encourage food and crop education to rural communities, where cost of living to low income families and distance travelled to obtain basic resources can prove problematic. Projects include community allotments and providing education on best practice for crop rotations, harvest seasons and nutrition.

**Recycling workshops** – Litter, and in particular plastics, is a major issue and threat to the ecosystem in Southern Africa. Rural communities have limited waste removal available and it is therefore a problem escalating at an alarming rate. Recycling workshops are provided through local schools to help educate children on the importance of correctly disposing of litter and recycling plastics.





**GLOBAL** reach. **ADVENTURE** for all. **PROJECTS** to inspire.

Explore our network of Global Adventure Projects:



**GLOBALADVENTUREPROJECTS.COM**

