



North Lindsey & Doncaster College Project Presentation



KwaZulu-Natal Wildlife & Community

GLOBAL reach. **ADVENTURE** for all. **PROJECTS** to inspire.



ABOUT US:

AFRICA

GAP Africa Projects

- We are a specialised travel company that offers academic trips and volunteering opportunities for groups and individual travellers in a number of locations worldwide
- We pride ourselves on curating experiences which are personalised to your needs and requirements
- Our first project travelled in 2012
- Full ATOL Bonding
- Working with over 55 Colleges and Universities around the UK
- A small dedicated team in the UK and South Africa.





AFRICA

KWAZULU-NATAL WILDLIFE & COMMUNITY PROJECT OVERVIEW

Overview and location
of the project

ABOUT THE PROJECT

AFRICA

Your Conservation Field Trip Explained

- A unique academic conservation experience based in South Africa
- Live and work in the wilds of Africa
- The opportunity to experience hands on wildlife conservation
- Bespoke, tailor-made projects to suit research requirements
- Project Activities include:
 - Pioneering Conservation Research
 - Conservation Activities
 - Cultural Enrichment
- Full 10 nights in South Africa
- All inclusive experience
- The most incredible wildlife experience you will ever have

ABOUT THE PROJECT

AFRICA

What is a Game Reserve?

- A game reserve is a large area of protected land where wild animals can live safely
- Wildlife is free roaming throughout the reserve allowing them to thrive in their natural habitat
- Reserves are either Government Owned (National Parks) or Privately Owned/Managed
- Most reserves will have physical boundaries i.e. electrified fence line
- Due to physical boundaries, wildlife must be managed due to restraints on population growth, migration and resources
- Wildlife is protected but also utilised as a tourist attraction (Eco Tourism) which creates funding for conservation efforts and research





AFRICA

ABOUT THE PROJECT

Our conservation work
in more detail

ABOUT THE PROJECT

AFRICA

KwaZulu Wildlife Community

Our academic team and qualified rangers at the KwaZulu Wildlife & Community Project offer a bespoke course to each institution dependent on their own personal objectives and learning needs.

We set out the basis of the trip, comprising of a 10-nights academic module split between the conservation reserve and the surrounding community with 2 nights at St Lucia Coastal Unit.



A full day will be planned but will vary from day to day depending on the day's task and research goals.

The project split and duration are as follows:

10-Night Itinerary

8 nights

Bonamanzi Game Reserve and Hluhluwe surrounds

2 nights

St Lucia Coastal Project

ABOUT THE PROJECT

AFRICA

Location





AFRICA

BONAMANZI/HLUHLUWE

A Big Four Game Reserve

BONAMANZI GAME RESERVE

AFRICA

Bonamanzi Game Reserve – 8 nights

Bonamanzi Game Reserve is a magnificent 10,000 acres of unspoiled wilderness boasting the Big 4 and incredible biodiversity (grasslands, riverine bush, savannah and thornveld) offering unprecedented diversity of wildlife.



ABOUT THE PROJECT

AFRICA

Bonamanzi

Bonamanzi is a privately owned Game Reserve, 10,000 acres in size with the Hluhluwe River on its Eastern border.

Proclaimed a Natural Heritage Site in 1995 in recognition of the biodiversity of the Reserve it offers sand forests, savanna and wetland areas. This diversity is why Bonamanzi is recognized as one of the best birding destinations in Southern Africa.



BONAMANZI GAME RESERVE

AFRICA

Home to over 40 Species of Mammal



ANY QUESTIONS?

INFO@GAPAFRICAPROJECTS.COM | +44 (0)207 1937819

INFORMATION PACK 12

BONAMANZI GAME RESERVE

AFRICA

Birds /Reptiles



ANY QUESTIONS?

INFO@GAPAFRICAPROJECTS.COM | +44 (0)207 1937819

INFORMATION PACK 13

BONAMANZI GAME RESERVE

AFRICA

Your Conservation Programme

Students will be taught and work alongside the field guides and the conservation team. The following examples depict the day-to-day activities that may be undertaken as part of the project.

- Use of Telemetry Tracking
- Elephant Monitoring
- Rhino Monitoring – Awareness
- Anti-poaching talk and fence walk
- Camera Trapping
- Night Drive
- Alien Vegetation Control / Reserve Maintenance
- Habitat and Prey Selection of Predators
- Tracks, Signs and Spoor
- Community Development



BONAMANZI GAME RESERVE

AFRICA

Use of Telemetry Tracking



ANY QUESTIONS?

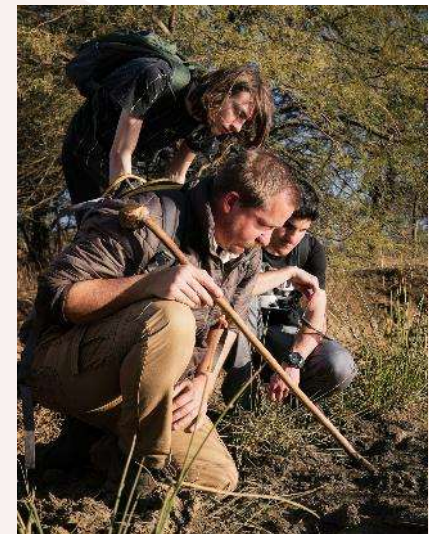
INFO@GAPAFRICAPROJECTS.COM | +44 (0)207 1937819

INFORMATION PACK 15

BONAMANZI GAME RESERVE

AFRICA

Ecology Trails: Tracks, signs and spoors



ANY QUESTIONS?

INFO@GAPAFRICAPROJECTS.COM | +44 (0)207 1937819

INFORMATION PACK 16

BONAMANZI GAME RESERVE

AFRICA

Rhino Monitoring – Awareness and Anti-Poaching



ANY QUESTIONS?

INFO@GAPAFRICAPROJECTS.COM | +44 (0)207 1937819

INFORMATION PACK 17

BONAMANZI GAME RESERVE

AFRICA

Camera Trap – Research and Study

Set out own camera traps

Learn about the correct placement of cameras, best location etc.

Never know what we'll find!



BONAMANZI GAME RESERVE

AFRICA

Night Game Drives



ANY QUESTIONS?

INFO@GAPAFRICAPROJECTS.COM | +44 (0)207 1937819

INFORMATION PACK 19

BONAMANZI GAME RESERVE

AFRICA

Bird Ringing



ANY QUESTIONS?

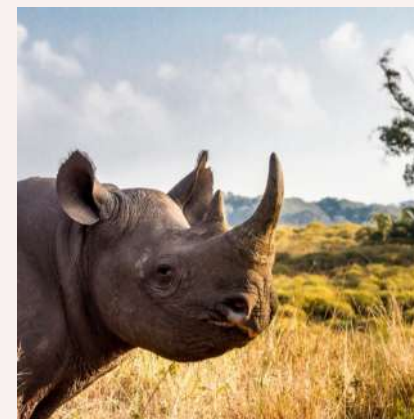
INFO@GAPAFRICAPROJECTS.COM | +44 (0)207 1937819

INFORMATION PACK 20

Hluhluwe-Imfolozi Park

Hluhluwe iMfolozi Park – is the oldest proclaimed nature reserve in Africa. It consists of 96,000 ha of wilderness and has the Big 5 as well as cheetah, hyena, African wild dog among many other mammals, reptiles and birds.

Students will have an inciteful game drive in open game viewers.



BONAMANZI GAME RESERVE

AFRICA

Community Projects & Zulu Culture

Learn about traditional Zulu culture

Community engagement essential for long-term conservation

Positive impact supporting not-for-profit initiatives

Projects: Move Africa, Project Rhino



ANY QUESTIONS?

INFO@GAPAFRICAPROJECTS.COM | +44 (0)207 1937819

INFORMATION PACK 22

BONAMANZI GAME RESERVE

AFRICA

Community – GAP Donation Bags



ANY QUESTIONS?

INFO@GAPAFRICAPROJECTS.COM | +44 (0)207 1937819

INFORMATION PACK 23



AFRICA

2 nights at St Lucia

A Coastal Adventure

ABOUT THE PROJECT

AFRICA

St Lucia Wetlands (2 nights)

St. Lucia is situated on the northern side of the estuary, the largest in Southern Africa and is totally surrounded by the Greater St. Lucia Wetlands Park and World Heritage Site. The area is famous for its wetlands and is a fantastic opportunity to witness crocodiles and hippos in their natural environment.



ST LUCIA – COASTAL ADVENTURE

AFRICA

Your Conservation Programme – St Lucia

Whilst at St Lucia you will get the opportunity to take part in some amazing activities but also time to relax in this beautiful coastal resort.

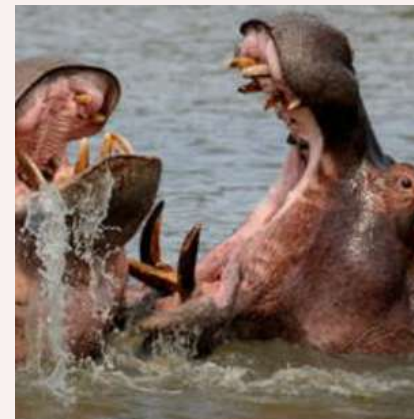
- Hippo and Crocodile tour in the Estuary
- Visit to Cape Vidal Nature Reserve and beach
- Bird walk (over 400 species in prime habitat)
- Whale Watching Tour (Seasonal and additional cost)



ST LUCIA – COASTAL ADVENTURE

AFRICA

Estuary Hippo and Crocodile Tour



ANY QUESTIONS?

INFO@GAPAFRICAPROJECTS.COM | +44 (0)207 1937819

INFORMATION PACK 27

ST LUCIA – COASTAL ADVENTURE

AFRICA

Bird Tracking and Identification



ANY QUESTIONS?

INFO@GAPAFRICAPROJECTS.COM | +44 (0)207 1937819

INFORMATION PACK 28

ST LUCIA – COASTAL ADVENTURE

AFRICA

Whale Watching (Additional Cost) Mid June – October & weather dependant



ANY QUESTIONS?

INFO@GAPAFRICAPROJECTS.COM | +44 (0)207 1937819

INFORMATION PACK 29



AFRICA

ACCOMMODATION & LIFESTYLE

Life in the African Bush

ACCOMMODATION

AFRICA

Bundu Camp



ANY QUESTIONS?

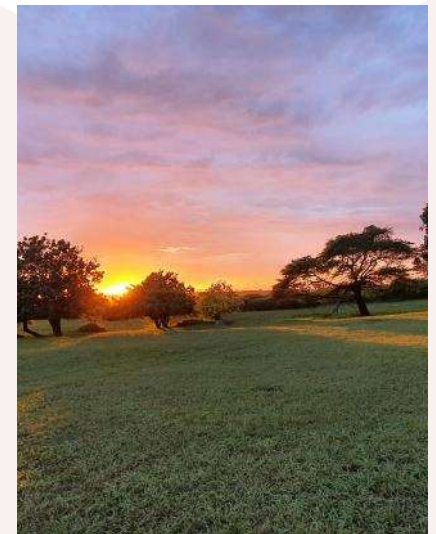
INFO@GAPAFRICAPROJECTS.COM | +44 (0)207 1937819

INFORMATION PACK 31

ACCOMMODATION

AFRICA

Bundu Camp



ANY QUESTIONS?

INFO@GAPAFRICAPROJECTS.COM | +44 (0)207 1937819

INFORMATION PACK 32

ACCOMMODATION

AFRICA

St Lucia Coastal Accommodation

Guest House style accommodation is provided during your time in St Lucia. Rooms are shared and have communal ablutions.

The guest house is located in the heart of St Lucia's Main Street and is the ideal location to explore the surrounding areas.



ACCOMMODATION

AFRICA

Food at the project

Three meals are provided a day prepared by the kitchen staff.

Breakfasts will consist of toast and cereals; lunch may include pasta, wraps, burgers, stir fry; dinners include meat, fish and vegetables with rice, potatoes or pasta.

On weekends a braai (BBQ) is often organised.

Please advise us of any dietary requirements in advance so we can ensure that you are adequately catered for.





AFRICA

THE NEXT STEPS TO YOUR FIELD TRIP

The next steps to the trip of a
lifetime!

THE NEXT STEPS

AFRICA

What is Included?

- Flights from London Heathrow
- Transfers to/from project
- Accommodation
- Three meals per day
- All activities as part of the project
- ATOL protection
- Airport meet/greet
- 24/7 In country support

NOT Included

- Personal Travel Insurance *
- Meals on travel days – before arriving & after departing from project
- Any activities not specified as part of the project
- Visas/travel documents



* We recommend that you take out personal travel insurance as soon as your booking is confirmed.

THE NEXT STEPS

AFRICA



Project dates & key deadlines

Confirmed trip dates:

Depart UK: 28/06/2026 | Arrive SA: 29/06/2026

Depart SA: 09/07/2026 | Arrive UK: 10/07/2026

Trip cost:

£2,550.00 Based on a group of 18 (confirmed once flights have been held)

Key deadlines are:

- Return the online booking form by 16/05/2025
- Deposit payment, £300.00 by 27/06/2025
- 50% instalment payment of £1125.00 to be paid by 09/03/2026
- Balance payment of £ 1125.00 to be paid by 04/05/2026
- Payment plans available
- 15/06/2026 e-Tickets & final documents will be issued

THE NEXT STEPS

AFRICA

Confirmation Documents

Confirmation documents will be issued and sent directly to you via email.

Please communicate with us with any questions relating to the field trip.

GAP Africa Projects

10 Oct 2022
Ref: 23-ACA-LAL-1212

Dear Chloe,

Thank you for agreeing to book with Gap Africa Projects as part of the Kambel Challenge trip to Zulu Land Conservation Research. Please take the time to look through this document and check that everything is correct.

We have received your deposit payment and your payment to now confirm your place on the trip. The final balance and due date is detailed on your invoice.

Please remember that you can contact me to discuss anything in this document as well as any other aspect of your experience and I am on hand as your personal travel advisor for the entirety of your placement.

Warm regards,
The GAP Africa Team

Passengers Travelling
Miss Chloe
Placement(s)
Zulu Land Conservation Research (06/03/23 – 18/03/23)

Inclusions
Flights, shared road transfers to and from Project, accommodation for duration, all meals and all project activities.

Exclusions
Insurance: any activities undertaken that are not included in part of the project.

Your Flight(s)

Flight	Class	Time	From	To
06/03/2023	D	15:00	Manchester (MAN)	
06/12/2022	A	10:00	London Heathrow (LHR)	
06/03/2023	D	18:20	London Heathrow (LHR)	
06/03/2023	A	07:35 + 1 D	London Heathrow (LHR)	
18/03/2023	D	08:15	London Heathrow (LHR)	
18/03/2023	A	05:30 + 1 D	London Heathrow (LHR)	
19/03/2023	D	09:35	London Heathrow (LHR)	
19/03/2023	A	19:40	Manchester (MAN)	

Your Booking
Travel Advice

Names and spellings
Please ensure that the names and spellings on your booking are correct. If there is a mistake, this will impact the trip. Please ensure you have the correct name and spelling on your booking.

Passport expiry date
Your passport must be valid for at least 10 days before the start of your trip. If it is not, you will need to renew it before you travel. Please ensure you have the correct expiry date on your booking.

Passport Copies
It is recommended that you have good copies of your passport, driver's license and any other ID with you when you travel. This is for your personal use only and is not for the project.

Travel Insurance
It is advised that you take the appropriate travel insurance for your trip. Please ensure you have the correct insurance on your booking.

ATOL Certificate
ATOL Certificate Number: 10890

ATOL Certificate
ATOL Certificate Number: 10890

ATOL Certificate
ATOL Certificate Number: 10890

CONFIRMATION INVOICE

Gap Africa Projects
10 Oct 2022
Ref: 23-ACA-LAL-1212

Dear Chloe,

Thank you for agreeing to book with Gap Africa Projects as part of the Kambel Challenge trip to Zulu Land Conservation Research. Please take the time to look through this document and check that everything is correct.

We have received your deposit payment and your payment to now confirm your place on the trip. The final balance and due date is detailed on your invoice.

Please remember that you can contact me to discuss anything in this document as well as any other aspect of your experience and I am on hand as your personal travel advisor for the entirety of your placement.

Warm regards,
The GAP Africa Team

Passengers Travelling
Miss Chloe
Placement(s)
Zulu Land Conservation Research (06/03/23 – 18/03/23)

Inclusions
Flights, shared road transfers to and from Project, accommodation for duration, all meals and all project activities.

Exclusions
Insurance: any activities undertaken that are not included in part of the project.

Your Flight(s)

Flight	Class	Time	From	To
06/03/2023	D	15:00	Manchester (MAN)	
06/12/2022	A	10:00	London Heathrow (LHR)	
06/03/2023	D	18:20	London Heathrow (LHR)	
06/03/2023	A	07:35 + 1 D	London Heathrow (LHR)	
18/03/2023	D	08:15	London Heathrow (LHR)	
18/03/2023	A	05:30 + 1 D	London Heathrow (LHR)	
19/03/2023	D	09:35	London Heathrow (LHR)	
19/03/2023	A	19:40	Manchester (MAN)	

Your Booking
Travel Advice

Names and spellings
Please ensure that the names and spellings on your booking are correct. If there is a mistake, this will impact the trip. Please ensure you have the correct name and spelling on your booking.

Passport expiry date
Your passport must be valid for at least 10 days before the start of your trip. If it is not, you will need to renew it before you travel. Please ensure you have the correct expiry date on your booking.

Passport Copies
It is recommended that you have good copies of your passport, driver's license and any other ID with you when you travel. This is for your personal use only and is not for the project.

Travel Insurance
It is advised that you take the appropriate travel insurance for your trip. Please ensure you have the correct insurance on your booking.

ATOL Certificate
ATOL Certificate Number: 10890

ATOL Certificate
ATOL Certificate Number: 10890

ATOL Certificate
ATOL Certificate Number: 10890

This is an important document. Make sure that you take it with you when you travel.

ATOL Certificate

This confirms that your money is protected by the ATOL scheme and that you can get home if your travel company collapses.

This certificate sets out how the ATOL scheme will protect the people named on it for the parts of their trip listed below.

Who is protected? Number of passengers: 10

What is protected?

You can find more detailed information on your booking, including price, on this confirmation you will receive from Gap Africa Projects Limited.

Who is protecting your trip?
Gap Africa Projects Limited ATOL Number 10890

Your protection
You are protected from when you were given this certificate to the end of your trip. If Gap Africa Projects Limited stops trading, the passengers named above will either:

- 1 complete their trip and return to the UK, or
- 2 receive a refund.

Your protection depends on the terms of the ATOL scheme (available at www.atol.org.uk).

If Gap Africa Projects Limited stops trading, you must follow the instructions at www.atol.org.uk (where there will be details of arrangements to bring people back to the UK, and information on how people can claim their money back) or you can call (+44) 20 7463 6360.

By issuing this ATOL Certificate, under Regulation 17 of the Civil Aviation (Air Travel Organisations' Licensing) Regulations 2012, Gap Africa Projects Limited confirms that the trip to which it applies is sold to you by the ATOL holder, the organiser named above. The ATOL scheme is run by the Civil Aviation Authority and paid for by the Air Travel Trust. To see what that is and what you can expect, together with full information on its terms and conditions go to www.atol.org.uk. As well as the protection of the ATOL scheme, you have protection under the Package Travel Regulations. For more information see www.direct.gov.uk in the Travel and Transport section.

Unique reference number	Date of issue	ATOL Certificate holder	ATOL number	Package sale
4473	10/10/2022	Gap Africa Projects Ltd	10890	

[Click here to view all available flights](#)

BOOKING YOUR ADVENTURE

AFRICA

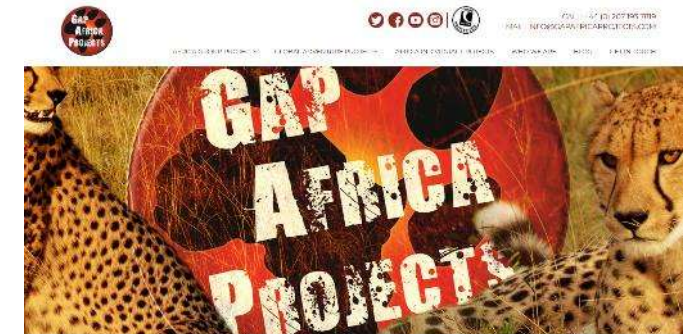
Group Web Page

<https://gapafricaprojects.com/26-4714>



Booking Form

<https://gapafricaprojects.com/booking-form-26-4714-nlc-kwc-north-lindsey-college/>



BOOKING FORM

Your Globe Adventure Starts Here!

Please use the form below to submit your provisional booking to your selected project. You have the option to pay your initial deposit with the submission of your booking form, or we will contact you for payment once your project placement has been secured.

If you'd like to contact us to ask any initial questions or find out more about what project you'd like to go on and when, you can also get in touch using our short enquiry form, or by calling +44 (0) 207 193 7819.

(NB: Your name should be given as displayed on your passport)

Title *

Name *

Date of birth *

Address *

Telephone (Do not enter +44 for UK numbers) *

Mobile (Do not enter +44 for UK numbers) *

Email 1 *

Email 2

(**NB: Please note that all booking correspondence will be sent via Email)**

Passport No.

Sustainability & Social, Economic Responsibility

Local employment from rural communities – our project partners employ a high percentage of staff from local communities. They advocate training to advance careers in hospitality, wildlife and conservation.

Low environmental impact camps – our project bush camps are built with minimal impact on the environment. Resources from the surrounding area are utilised for buildings, water is (where possible) pumped from local river sources and green energy supplies, such as solar are championed.

Community donations and support – we encourage all our international study groups to be proactive in donation collections and arrange for excess baggage for said donations to be taken out to South Africa in support of the local communities.

Move Africa, supporting young females – 3 in 10 girls in South Africa miss a week of school every month because they cannot afford basic sanitary products. Our project partners work with Move Africa alongside their partner NGOs, to distribute menstrual cups to the local communities and provide education workshops.

Rhino Art – Project rhino realises the enormous responsibility the youth have to ensure our wildlife is protected for many generations to come. They ensure they can reach and educate as many kids as possible through Rhino Art, using art workshops to teach about conservation. This initiative is supported by our local project partners.

Food/crop education – our project partners encourage food and crop education to rural communities, where cost of living to low income families and distance travelled to obtain basic resources can prove problematic. Projects include community allotments and providing education on best practice for crop rotations, harvest seasons and nutrition.

Recycling workshops – Litter, and in particular plastics, is a major issue and threat to the ecosystem in Southern Africa. Rural communities have limited waste removal available and it is therefore a problem escalating at an alarming rate. Recycling workshops are provided through local schools to help educate children on the importance of correctly disposing of litter and recycling plastics.



GLOBAL reach. **ADVENTURE** for all. **PROJECTS** to inspire.

Explore our network of Global Adventure Projects:



GLOBALADVENTUREPROJECTS.COM

