



SPARSHOLT COLLEGE PROJECT PRESENTATION

The background image is a collage of three circular photographs. The left circle shows a close-up of a cluster of bright purple flowers. The center circle shows a wide river flowing through a savanna landscape under a blue sky with white clouds. The right circle shows a close-up of a kudu antelope's head with its long, spiraling horns.

Waterberg Conservation Research

AFRICA

GLOBAL reach. **ADVENTURE** for all. **PROJECTS** to inspire.

ABOUT US:

AFRICA

GAP Africa Projects

- We are a specialised travel company that offers academic trips and volunteering opportunities for groups and individual travellers, in a number of locations worldwide
- We pride ourselves on curating experiences which are personalised to your needs and requirements
- Our first project travelled in 2012
- Full ATOL Bonding
- Working with over 50 Colleges and Universities around the UK
- A small dedicated team in the UK and South Africa.





AFRICA

ABOUT THE WATERBERG

Project overview and
location

ABOUT THE WATERBERG

AFRICA

Your Conservation Field Trip Explained

- A unique conservation experience based in South Africa
- Live & work in 2 research camps on a wild African game reserve
- 12-day programme specifically tailored
- Learn about conservation management
- Project Activities include:
 - Pioneering Conservation Research
 - Conservation Activities
 - Possible Veterinary intervention
- Dedicated vehicles and conservation staff
- All-inclusive experience
- The most incredible wildlife experience you will ever have

ABOUT THE WATERBERG

AFRICA

Waterberg Conservation Project

Our academic team and qualified rangers at the Waterberg Conservation Project offer a bespoke course to each institution dependent on their own personal objectives and learning needs.

This is not a Safari Holiday!

A full day will be planned but will vary from day to day depending on the days task and research goals.

- 6 Days spent at SwebeSwebe Nature Reserve
- 6 Days at Welgevonden Game Reserve



ABOUT THE WATERBERG

AFRICA

Location



ABOUT THE WATERBERG

TRUE WILDERNESS

AFRICA



ANY QUESTIONS?

INFO@GAPAFRICAPROJECTS.COM | +44 (0)207 1937819

Project Presentation 7



AFRICA

ABOUT THE PROJECT

Our conservation work
in more detail

ABOUT SWEBESWEBE

AFRICA

SwebeSwebe Nature Reserve

- 2,500 acres Privately Managed Nature Reserve, part of a 15,000-acre reserve
- Forming part of the Waterberg Biosphere
- Work alongside the conservation team including:
 - Conservation Research
 - Cutting Edge Conservation
- Located in a Malaria free zone
- Proclaimed Protected Conservation Area
- Big Game & Predator Free

ABOUT SWEBESWEBE

AFRICA

Vegetation Surveys and Ecological Studies



ANY QUESTIONS?

INFO@GAPAFRICAPROJECTS.COM | +44 (0)207 1937819

Project Presentation 10

ABOUT SWEBESWEBE

AFRICA

Wildlife and Ecological Projects



ANY QUESTIONS?

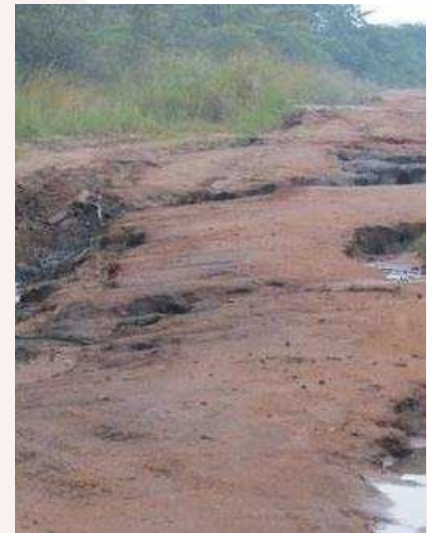
INFO@GAPAFRICAPROJECTS.COM | +44 (0)207 1937819

Project Presentation 11

ABOUT SWEBESWEBE

AFRICA

Practical Management



ANY QUESTIONS?

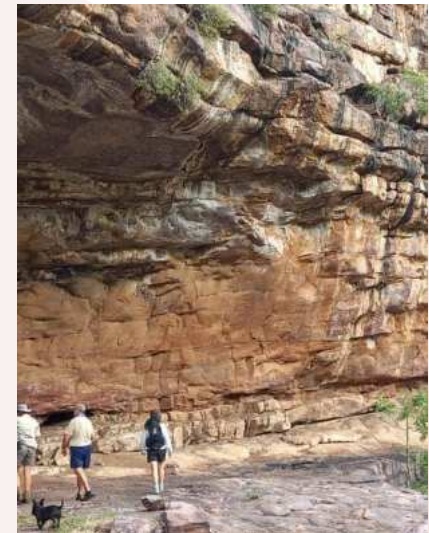
INFO@GAPAFRICAPROJECTS.COM | +44 (0)207 1937819

Project Presentation 12

ABOUT SWEBESWEBE

AFRICA

Rural Development and Support



ANY QUESTIONS?

INFO@GAPAFRICAPROJECTS.COM | +44 (0)207 1937819

Project Presentation 13

AFRICA

[illegible]

ABOUT WELGEVONDEN

AFRICA

Home to the BIG 5



ANY QUESTIONS?

INFO@GAPAFRICAPROJECTS.COM | +44 (0)207 1937819

Project Presentation 15

ABOUT WELGVONDEN

AFRICA

Home to over 60 Species of Mammal



ANY QUESTIONS?

INFO@GAPAFRICAPROJECTS.COM | +44 (0)207 1937819

Project Presentation 16

ABOUT THE PROJECT

AFRICA

Many Reptile, Insect and Bird Species



ANY QUESTIONS?

INFO@GAPAFRICAPROJECTS.COM | +44 (0)207 1937819

Project Presentation 17

ABOUT THE PROJECT

AFRICA

Bush Skills – Bush Walks, Tracking Wildlife



ANY QUESTIONS?

INFO@GAPAFRICAPROJECTS.COM | +44 (0)207 1937819

Project Presentation 18

ABOUT THE PROJECT

AFRICA

Research – Habitat and Prey Selection: Predators



ANY QUESTIONS?

INFO@GAPAFRICAPROJECTS.COM | +44 (0)207 1937819

Project Presentation 19

ABOUT THE PROJECT

AFRICA

Camera Trap – Research and Study



ANY QUESTIONS?

INFO@GAPAFRICAPROJECTS.COM | +44 (0)207 1937819

Project Presentation 20

ABOUT THE PROJECT

AFRICA

Anti-Poaching Unit



ANY QUESTIONS?

INFO@GAPAFRICAPROJECTS.COM | +44 (0)207 1937819

Project Presentation 21

ABOUT THE PROJECT

AFRICA

Monitoring the Welgevonden Rhino Population

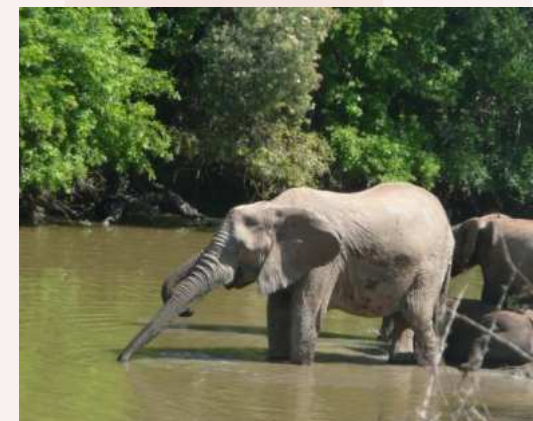
Behavioural observations, body condition, herd structure, photos and GPS locations are recorded to document where the animals are occurring; keeping tabs on the localities and activities of Black and White Rhino on Welgevonden.



ABOUT THE PROJECT

AFRICA

Research – Elephant Monitoring



ANY QUESTIONS?

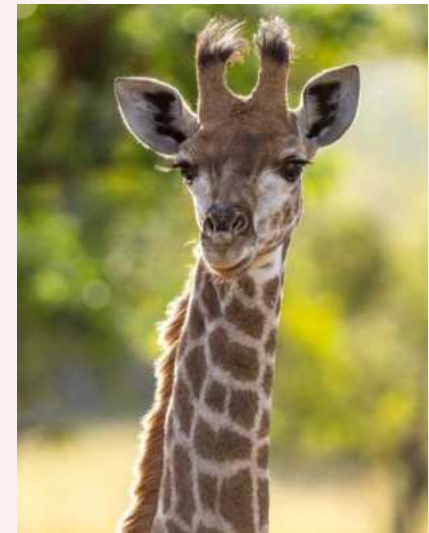
INFO@GAPAFRICAPROJECTS.COM | +44 (0)207 1937819

Project Presentation 23

ABOUT THE PROJECT

AFRICA

Monitoring Herbivore Condition and Health



ANY QUESTIONS?

INFO@GAPAFRICAPROJECTS.COM | +44 (0)207 1937819

Project Presentation 24



AFRICA

ACCOMODATION & LIFESTYLE

Living in the African Bush

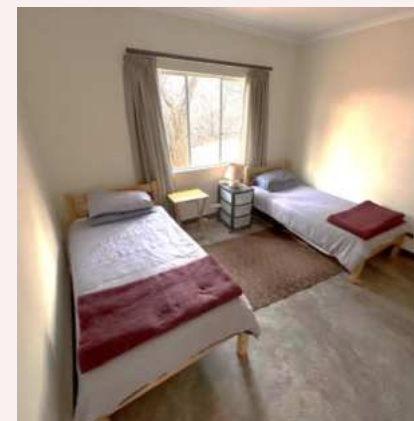
ACCOMMODATION & LIFESTYLE

AFRICA

Hanover Nature Reserve Accommodation

Students and academic groups will be accommodated at our purpose-built camp on Hanover Nature Reserve, designed to provide comfort and foster community living. The camp features shared twin and triple rooms with communal ablution facilities. At the heart of the camp is a spacious communal area, equipped with a shared kitchen and dining space, which also serves as a hub for relaxation, lectures, and group activities.

For evening gatherings, there's a cozy firepit/boma area where students can unwind and cook meals over the fire under the stars. On weekends, groups are welcome to enjoy the main farmhouse and pool area for some well-deserved relaxation. Ingredients for meals are provided, and students cook together, creating a vibrant and social camp atmosphere.



ACCOMMODATION & LIFESTYLE

AFRICA

Welgevonden Accommodation

The student centre and camp is based on the reserve and boasts ten tents that sleep two to four people per tent in single beds, each tent also has lighting and electricity supply. There are communal hot and cold showers and regular flushing toilets. There are communal facilities including a lecture room, canteen, lounge, entertainment area and storage fridge.



ACCOMMODATION & LIFESTYLE

AFRICA

Welgevonden

All meals are provided in the communal dining room, there is an outside area for dining as well.

Three meals are provided daily on a self cook basis, prepared communally by the group. Students will take part in communal cooking and keeping the kitchen tidy.

Meals will either be served at the facility or in the field 'picnic' style, this depends on activities either planned or unscheduled.

The research team often work 6 days a week so time off is often limited to Sundays only.

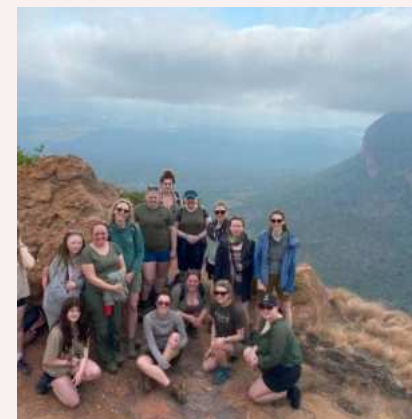
Most evenings are spent at leisure around the camp.



ACCOMMODATION & LIFESTYLE

AFRICA

Life on Reserve



ANY QUESTIONS?

INFO@GAPAFRICAPROJECTS.COM | +44 (0)207 1937819

Project Presentation 29

ACCOMMODATION & LIFESTYLE

AFRICA

Weekend additional activities (own cost)

- Horse Riding (1 hour) R590 pp
- Horse Riding (2 Hours) R1090 pp
- Sunset Cruise (Includes finger foods & soft drinks) R690 pp
- Cultural Foundation Drumming session R600 pp
- Guided Bush Walk (Non Predator) R300 pp
- Guided Bush Walk (Predator) R800 pp
- Bicycle Rental - 4 hours at Clubhouse R120 pp
- Spa massages between R320 – R830 pp
- Marimba Band and Pedi Dancers (Group activity enquire for rates)
- Game Drive and Boat Cruise with Lunch at Lakeside R890 pp
- Picnic Lunch at Yellow-wood Gorge Mountain Pool R890 pp





AFRICA

BOOKING YOUR ADVENTURE

The next steps to the trip of a
lifetime!

BOOKING YOUR ADVENTURE

AFRICA

What is Included?

- Flights
- Transfers to/from project
- Accommodation
- Three meals per day (self prepared)
- All activities as part of the project
- ATOL protection
- Airport meet/greet
- 24/7 In country support

NOT Included

- Personal Travel Insurance *
- Meals on travel days – before arriving & after departing from project
- Any activities not specified as part of the project
- Visas/travel documents

* We recommend that you take out personal travel insurance as soon as your booking is confirmed.



BOOKING YOUR ADVENTURE

AFRICA

Dates & key deadlines

Proposed trip dates are:

Depart UK: 12th April 2026 | Arrive SA: 13th April 2026

Depart SA: 25th April | Arrive UK: 26th April 2026

Trip cost:

£2,625 est. (based on a group of 16)

Key deadlines are:

- Return online booking form by 20/06/2025
- Deposit payment, £300.00 by 18/07/2025
- 50% instalment payment of £1162.50 to be paid by 22/12/2025
- Balance payment of £1162.50 to be paid by 16/02/2026
- Payment plans available
- 30/03/2026 e-Tickets & final documents will be issued

BOOKING YOUR ADVENTURE

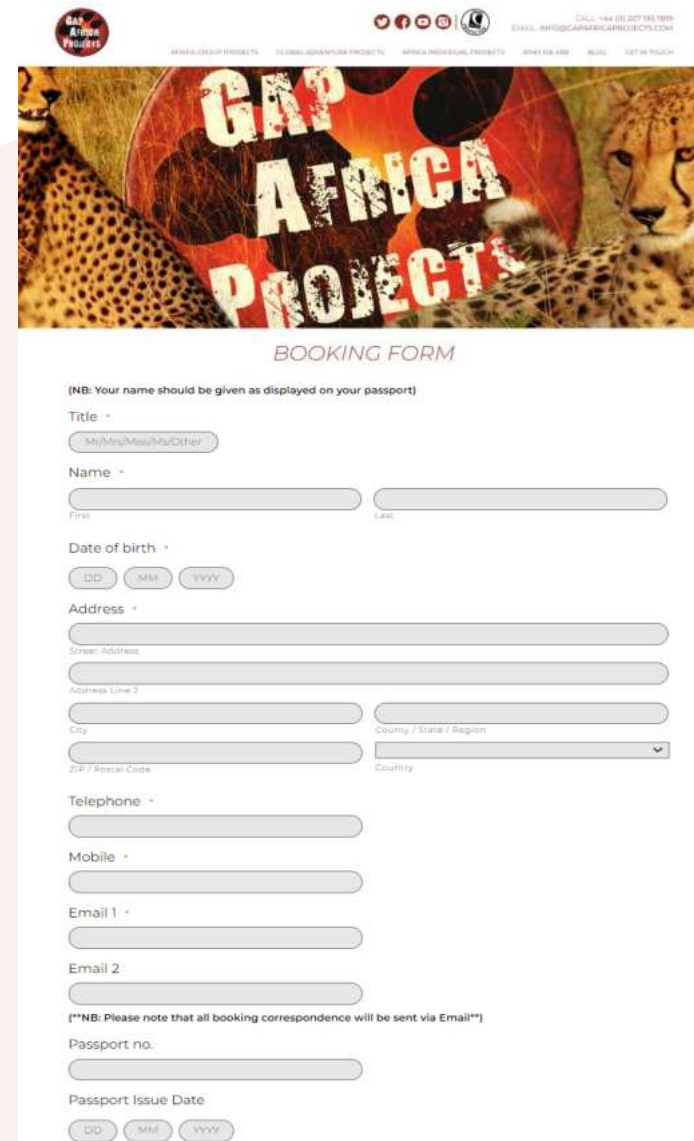
AFRICA

Booking Form

- Please submit by 20/06/2025
- No deposit required at this stage of booking
- Passport fields not mandatory

Key deadlines are:

- Deposit of £300 to confirm placement
- Instalment payment of 50% due 16 weeks before departure
- Balance payment due 8 weeks before departure



The screenshot shows the 'GAP Africa Projects' website header with a cheetah and a red circular logo. Below the header is the 'BOOKING FORM' section. It includes a note: '(NB: Your name should be given as displayed on your passport)'. The form fields are: Title (dropdown), Name (First and Last name input fields), Date of birth (DD, MM, YYYY input fields), Address (Street Address, Address Line 2, City, County / State / Region, ZIP / Postal Code, and Country dropdown), Telephone (input field), Mobile (input field), Email 1 (input field), Email 2 (input field), a note: '(**NB: Please note that all booking correspondence will be sent via Email**)', Passport no. (input field), and Passport Issue Date (DD, MM, YYYY input fields).

THE NEXT STEPS

AFRICA

Confirmation Documents

Confirmation documents will be issued and sent directly to you via email.

Please communicate with us with any questions relating to the field trip.

Gap Africa Projects

10 Oct 2022
Ref: 23-KCA-CAC7-01-17

Dear Chloe,

Thank you for choosing to book with Gap Africa Projects as part of the Kavalali College trip to Zulu Land Conservation Research. Please take the time to look through this document and check that everything is correct.

We have received your deposit payment and your payment is now confirmed as per the details below. The final balance and due date is detailed on your invoice.

Please remember that you can contact me to discuss anything in this document as well as any other aspect of your experience and I am on hand to ensure your travel is as smooth as possible for the entirety of your placement.

Warm regards,
The Gap Africa Team

Passengers Travelling
Miss Chloe

Placement(s)
Zulu Land Conservation Research (06/03/23 - 18/03/23)

Inclusions
Flights, travel road transfers to and from Project, accommodation for duration, all meals and all project activities.

Exclusions
Insurance, any activities undertaken that are not included as part of the project.

Your Flight(s)

Flight No.	Date	Time	From	To
BA1399	05/03/2023	0:13:00	Manchester (MAN)	London Heathrow (LHR)
BA1399	05/03/2023	A: 18:05	London Heathrow (LHR)	Manchester (MAN)
BA1399	05/03/2023	0:13:00	London Heathrow (LHR)	Manchester (MAN)
BA1399	05/03/2023	A: 18:05	Manchester (MAN)	London Heathrow (LHR)
BA1399	05/03/2023	0:13:00	London Heathrow (LHR)	Manchester (MAN)
BA1399	05/03/2023	A: 18:05	Manchester (MAN)	London Heathrow (LHR)

Gap Africa Projects
PO Box 106
Chesham
Bucks HP8 4JH
UK
Tel: +44 (0) 207 193 7819
Email: info@gapfricaprojects.com

CONFIRMATION INVOICE

Gap Africa Projects
PO Box 106
Chesham
Bucks HP8 4JH
UK
Tel: +44 (0) 207 193 7819
Email: info@gapfricaprojects.com

Miss Chloe

10/10/2022
Invoice No: 23-KCA-CAC7-02-06
Booking Ref: 4433

Project Placement, Dates & Location

Description	City	Start	End
Zulu Land Conservation Research	London Heathrow (LHR)	06/03/2023	18/03/2023

Flights

Flight No.	Date	Time	From	To
BA1399	05/03/2023	0:13:00	Manchester (MAN)	London Heathrow (LHR)
BA1399	05/03/2023	18:05	London Heathrow (LHR)	Manchester (MAN)
BA1399	05/03/2023	0:13:00	London Heathrow (LHR)	Manchester (MAN)
BA1399	05/03/2023	18:05	Manchester (MAN)	London Heathrow (LHR)

Insurance

Gap Africa Projects is licensed under the Air Travel Organiser's Licence (ATOL) 10890. This trip is financially protected by this ATOL Licence and we will also supply an ATOL Certificate. Please visit www.atol.org.uk for more information about financial protection and the ATOL Certificate.

Payment Methods

Description	Date	Amount
Total cost of the arrangements as specified above	28/09/2022	£ 2,395.00
Deposit Payment	10/10/2022	£ 1,000.00
Total balance due by 12/11/2022		£ 1,395.00

Payment Methods

For all bank transfers, please use your surname and booking number 4433 as reference. For transfers outside of the UK, please ensure that international transfer charges are covered when making the transaction.

Chesham: Payable to GAP AFRICA PROJECTS LTD.
Bank Transfer: Account No: 30800706
Sort Code: 20-46-73
Swift: BARC3222
BIC: BARC3222

This is an important document. Make sure that you take it with you when you travel.

ATOL Certificate

This confirms that your money is protected by the ATOL scheme and that you can get home if your travel company collapses.

This certificate sets out how the ATOL scheme will protect the people named on it for the parts of their trip listed below.

Who is protected? Number of passengers: 19

What is protected?

You will receive more detailed information on your booking, including price, on the confirmation you will receive from Gap Africa Projects Limited.

Who is protecting your trip?
Gap Africa Projects Limited ATOL Number 10890

Your protection
You are protected from when you were given this certificate to the end of your trip.
If Gap Africa Projects Limited stops trading, the passengers named above will either:
1 complete their trip and return to the UK, or
2 receive a refund.
Your protection depends on the terms of the ATOL scheme (available at www.atol.org.uk).

If Gap Africa Projects Limited stops trading, you must follow the instructions at www.atol.org.uk where there will be details of arrangements to bring people back to the UK, and information on how people can claim their money back or you can call +44 (0) 20 7463 6350.

By issuing this ATOL Certificate, under Regulation 17 of the Civil Aviation (Air Travel Organiser's Licence) Regulations 2012, Gap Africa Projects Ltd confirms that the trip to which it applies is sold in line with the ATOL held by the organiser named above. The ATOL scheme is run by the Civil Aviation Authority and is paid for by the Air Travel Trust. To see what is and what you can expect, together with full information on its terms and conditions go to www.atol.org.uk. As well as the protection of the ATOL scheme, you have protection under the Package Travel Regulations. For more information see www.direct.gov.uk in the Travel and Transport section.

Unique reference number	Date of issue	ATOL Certificate holder	ATOL number	Package sale
4433	10/10/2022	Gap Africa Projects Ltd	10890	

Click here to book an Airline Package

BOOKING YOUR ADVENTURE

AFRICA

Group Web Page

<https://gapafricaprojects.com/26-4729-sca-swb-sparsholt-college/>



Booking Form

<https://gapafricaprojects.com/booking-form-26-4729-sca-swb-sparsholt-college/>



BOOKING FORM

Your Global Adventure Starts here!

Please use the form below to submit your provisional booking to your selected project. You have the option to pay your initial deposit with the submission of your booking form, or we will contact you for payment once your project placement has been secured.

If you'd like to contact us to ask any initial questions or find out more about what project you'd like to go on and when, you can get also get in touch using our short enquiry form, or by calling +44 (0) 207 193 7819.

(NB: Your name should be given as displayed on your passport)

Title *

Name *

Date of birth *

Address *

Sustainability & Social, Economic Responsibility

Local employment from rural communities – our project partners employ a high percentage of staff from local communities. They advocate training to advance careers in hospitality, wildlife and conservation.

Low environmental impact camps – our project bush camps are built with minimal impact on the environment. Resources from the surrounding area are utilised for buildings, water is (where possible) pumped from local river sources and green energy supplies, such as solar are championed.

Community donations and support – we encourage all our international study groups to be proactive in donation collections and arrange for excess baggage for said donations to be taken out to South Africa in support of the local communities.

Move Africa, supporting young females – 3 in 10 girls in South Africa miss a week of school every month because they cannot afford basic sanitary products. Our project partners work with Move Africa alongside their partner NGOs, to distribute menstrual cups to the local communities and provide education workshops.

Rhino Art – Project rhino realises the enormous responsibility the youth have to ensure our wildlife is protected for many generations to come. They ensure they can reach and educate as many kids as possible through Rhino Art, using art workshops to teach about conservation. This initiative is supported by our local project partners.

Food/crop education – our project partners encourage food and crop education to rural communities, where cost of living to low income families and distance travelled to obtain basic resources can prove problematic. Projects include community allotments and providing education on best practice for crop rotations, harvest seasons and nutrition.

Recycling workshops – Litter, and in particular plastics, is a major issue and threat to the ecosystem in Southern Africa. Rural communities have limited waste removal available and it is therefore a problem escalating at an alarming rate. Recycling workshops are provided through local schools to help educate children on the importance of correctly disposing of litter and recycling plastics.



GLOBAL reach. **ADVENTURE** for all. **PROJECTS** to inspire.

Explore our network of Global Adventure Projects:



GLOBALADVENTUREPROJECTS.COM

