



North Lindsey College Project Information Pack



KwaZulu-Natal Wildlife & Community

GLOBAL reach. **ADVENTURE** for all. **PROJECTS** to inspire.



TRIP OVERVIEW

AFRICA

North Lindsey College – Booking Reference 4714

Trip Dates:

28th June – 10th July 2026

International Flights:

Flight No	Flight Date	Dept.	Dept. Time	Arr.	Arr. Time
TBC	28/06/2026	London Heathrow (LHR)	TBC	Johannesburg (JNB)	TBC + 1 Day
TBC	29/06/2026	Johannesburg (JNB)	TBC	Durban (DUR)	TBC
TBC	09/06/2026	Durban (DUR)	TBC	Johannesburg (JNB)	TBC + 1 Day
TBC	09/07/2026	Johannesburg (JNB)	TBC	London Heathrow (LHR)	TBC + 1 Day

Baggage Allowance – 1 piece of checked baggage @20kgs, 1 piece of hand baggage @ 7kgs max dimensions 56x36x25 cms

Project:

KwaZulu Wildlife & Community– Bonamanzi Hluhluwe & St Lucia

Trip Cost:

£2550.00 per person (to be confirmed once flights are available and based upon 18 passengers)

- £300.00 Deposit
- £1125.00 Instalment due 09/03/2026
- £1125.00 Balance due 04/05/2026



ABOUT THE PROJECT

Overview and location
of the project

ABOUT THE PROJECT

AFRICA

KwaZulu Wildlife Community

Our academic team and qualified rangers at the KwaZulu Wildlife & Community Project offer a bespoke course to each institution dependent on their own personal objectives and learning needs.

We set out the basis of the trip, comprising of a 10-day academic module split between the conservation reserves, the surrounding community plus 2 nights at St Lucia Coastal Unit



A full day will be planned but will vary from day to day depending on the day's task and research goals.

The project split and duration are as follows:

10 Day Itinerary

Days 1 – 8

Bonamanzi Game Reserve and Hluhluwe surrounds

Days 9 – 10

St Lucia Coastal Project

ABOUT THE PROJECT

AFRICA

Bonamanzi (Days 1-8)

Bonamanzi is a privately owned Game Reserve, 4000 hectares in size with the Hluhluwe River on its Eastern border. Proclaimed a Natural Heritage Site in 1995 in recognition of the biodiversity of the Reserve it offers sand forests, savanna and wetland areas. This diversity is why Bonamanzi is recognized as one of the best birding destinations in Southern Africa.



ANY QUESTIONS?

INFO@GAPAFRICAPROJECTS.COM | +44 (0)207 1937819

INFORMATION PACK 5

ABOUT THE PROJECT

AFRICA

St Lucia Wetlands (Days 9 – 10)

St. Lucia is situated on the northern side of the estuary, the largest in Southern Africa and is totally surrounded by the Greater St. Lucia Wetlands Park and World Heritage Site. The area is famous for its wetlands and is a fantastic opportunity to witness Crocodiles and Hippos in their natural environment. Snorkelling at Cape Vidal is tide and current dependent.

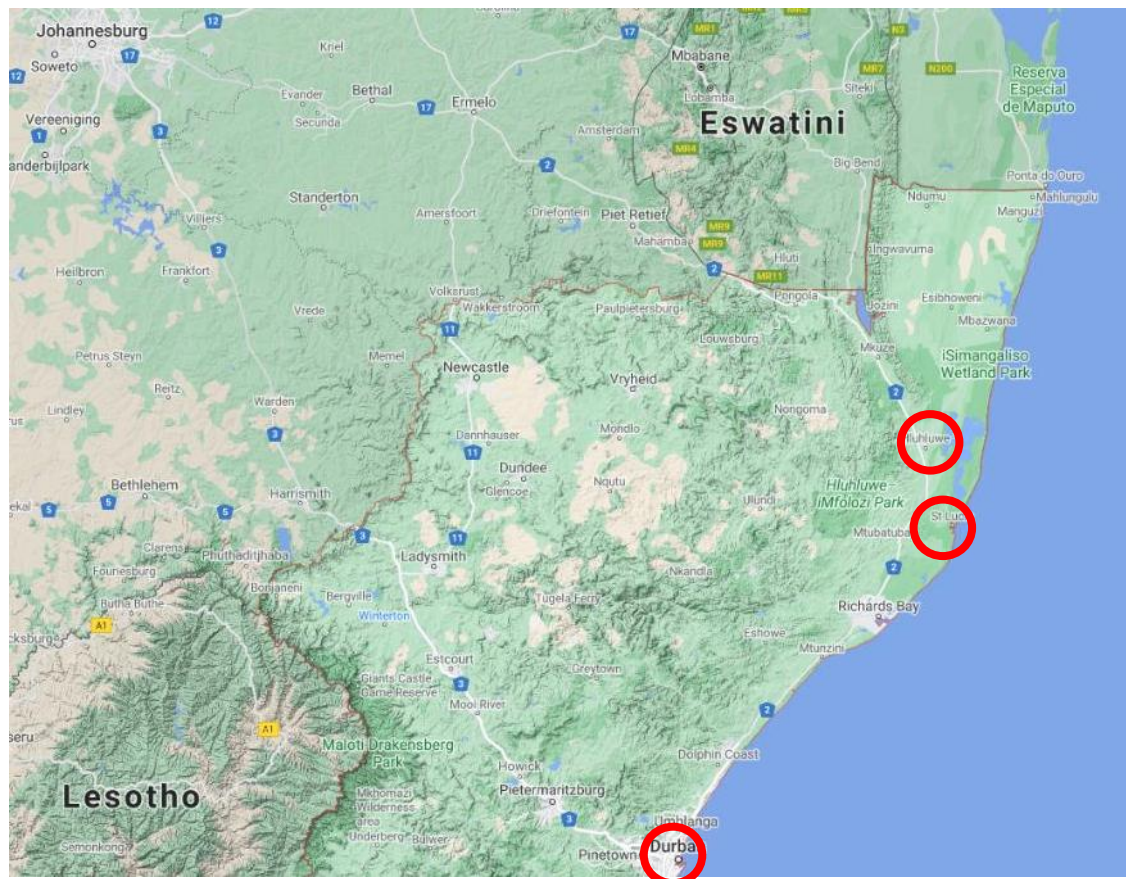


ABOUT THE PROJECT

AFRICA

KwaZulu Wildlife & Community Location

South Africa a world leader in conservation





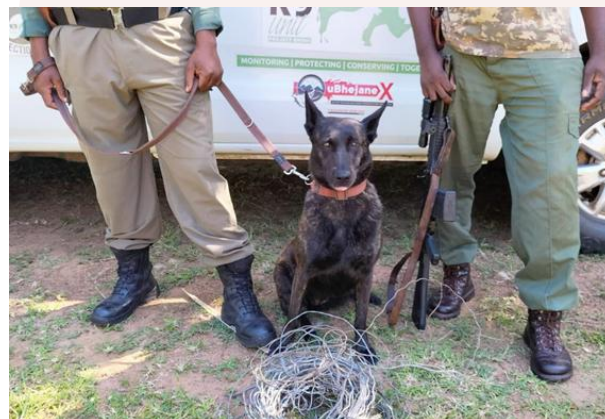
8 Days at Bonamanzi/ Hluluwe

KwaZulu Wildlife & Community – Bonamanzi

Leopard/Hyena Research presentation and tracking, night drive, camera traps

Bird ringing – Erect mist nets, free birds from nets, collect data, release birds

Anti-poaching boat patrol in search of hippo snares & gill nets on the Hluhluwe River



YOUR PROJECT

AFRICA

KwaZulu Wildlife & Community – Hluhluwe

Snake Pharm anti-venom research / Reptile Centre – volunteering and optional snake handling course

Dumazulu – Zulu Cultural experience



ANY QUESTIONS?

INFO@GAPAFRICAPROJECTS.COM | +44 (0)207 1937819

INFORMATION PACK 10

Hluhluwe–Imfolozi Park

Hluhluwe iMfolozi Park – is the oldest proclaimed nature reserve in Africa. It consists of 96000 ha of wilderness and has the Big 5 as well as cheetah, hyena, African wild dog among many other mammals, reptiles and birds.

Students will have an inciteful game drives in open game viewers.



KwaZulu Wildlife & Community – Hluhluwe

Students will be taught and have the opportunity to work alongside several inspiring professionals –

Project Rhino. – Project Rhino aims to educate school children on the conservation of Rhinos and the Rhino poaching crisis. It aims to increase relationships with game reserves and the neighboring communities. Project Rhino has reached over 700,000 school children in South Africa, educating these children about the importance of the natural world and the wildlife around them. Children attend presentations and are encouraged to produce artwork in support of the local wildlife. The education links directly to the Zulu culture

Move Africa – Champion and encourage girls on how to use menstrual cups as a sustainable solution to period poverty. In Africa 3 out of 10 girls miss out on a week of school every month, due to not being able to afford menstrual products. This has a huge impact on the girl's outlook. Move Africa's aim is to equip young women with sustainable sanitary ware and relevant education about menstrual cycles





2 Days at St Lucia

A Coastal Adventure

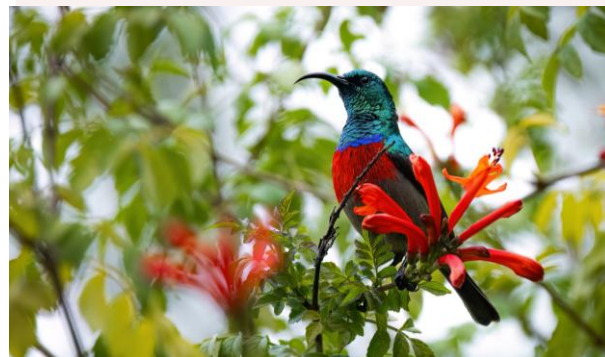
YOUR PROJECT

AFRICA

Your Conservation Programme – St Lucia

Whilst at St Lucia you will get the opportunity to take part in some amazing activities but also time to relax in the beautiful coastal resort of St Lucia.

- A Hippo and Crocodile tour in the Estuary
- A visit to Cape Vidal Nature Reserve and beach
- Tour and Talk of the Crocodile Research Centre
- Bird walk (over 400 species in prime habitat)
- Whale Watching Tour (Seasonal and additional cost)





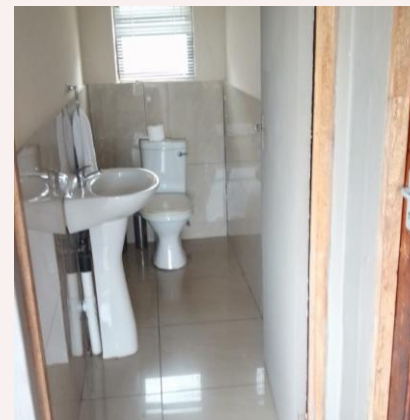
ACCOMMODATION & LIFESTYLE

Life in the African Bush

ACCOMMODATION

AFRICA

Bundu Camp



ANY QUESTIONS?

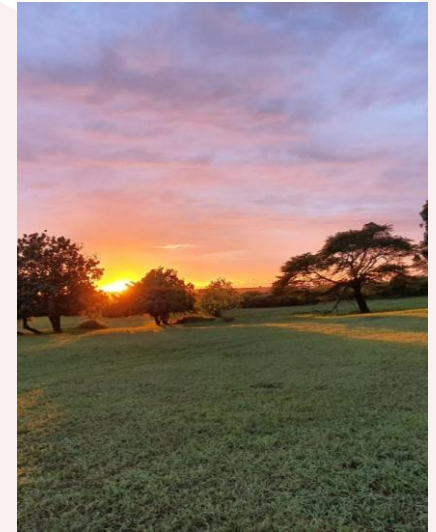
INFO@GAPAFRICAPROJECTS.COM | +44 (0)207 1937819

INFORMATION PACK 16

ACCOMMODATION

AFRICA

Bundu Camp



ANY QUESTIONS?

INFO@GAPAFRICAPROJECTS.COM | +44 (0)207 1937819

INFORMATION PACK 17

ACCOMMODATION

AFRICA

St Lucia Coastal Accommodation

Guest House style accommodation is provided during your time in St Lucia. Rooms are shared and have communal ablutions.

The guest house is located in the heart of St Lucia's Main Street and is the ideal location to explore the surrounding areas.



ANY QUESTIONS?

INFO@GAPAFRICAPROJECTS.COM | +44 (0)207 1937819

INFORMATION PACK 18



USEFUL INFORMATION

Inclusions/Exclusions &
Recommended Kit List

WHAT'S INCLUDED

AFRICA

What is included?

- Flights
- Transfers to/from project
- Accommodation
- Three meals per day
- All activities as part of the project
- ATOL protection
- Airport meet/greet
- 24/7 In country support

NOT Included

- Personal Travel Insurance *
- Meals on travel days – before arriving & after departing from the project.
- Any activities not specified as part of the project
- Visas/travel documents
- Tips

* We recommend that you take out personal travel insurance as soon as your booking is confirmed.



Suggested kit list

- Short sleeve shirts
- Long work trousers and shorts
(Or work trousers with zip-off longs)
- T shirts
- Hiking Boots/comfortable walking shoes to work in every day
- Rain jacket
- Sweatshirt/Fleece (Winter months pack plenty)
- Padded parka jacket/windbreaker – (it can get very cold on an open vehicle – even on a summer evening)
- Daypack rucksack
- Microfibre sleeping bag liner – useful for extra warmth in winter
- Socks
- Hat for sun protection / Warm Hat (winter only)
- Working gloves
- Gloves for warmth (winter only)
- Changes of casual clothes for evenings
- Underwear
- Sandals / comfy shoes to wear after work hours
- Beach towel
- Swimming costume
- Toiletries
- Tick / insect repellent
- Personal medical items and First Aid Kit
- Binoculars
- Sunscreen & Sunglasses

Other useful items:

- Good torch
- Water bottle
- Camera
- Spare batteries
- Mammal/bird book
- Notebook/diary and pen
- Lip balm

- All work clothes should be neutral or earth tones for working in the bush.
- No skimpy or bright coloured clothing to be worn.



GLOBAL reach. **ADVENTURE** for all. **PROJECTS** to inspire.

Explore our network of Global Adventure Projects:



GLOBALADVENTUREPROJECTS.COM

