



VETERINARY PROFESSIONALS – PROJECT INFORMATION PACK



Waterberg Wildlife & Veterinary Course Entabeni

AFRICA

GLOBAL reach. **ADVENTURE** for all. **PROJECTS** to inspire.

AFRICA

CONTENTS

ABOUT ENTABENI 3-5

YOUR PROJECT 6-30

ACCOMMODATION 31-36

USEFUL INFORMATION 37 – 40

BOOKING YOUR ADVENTURE 41-45



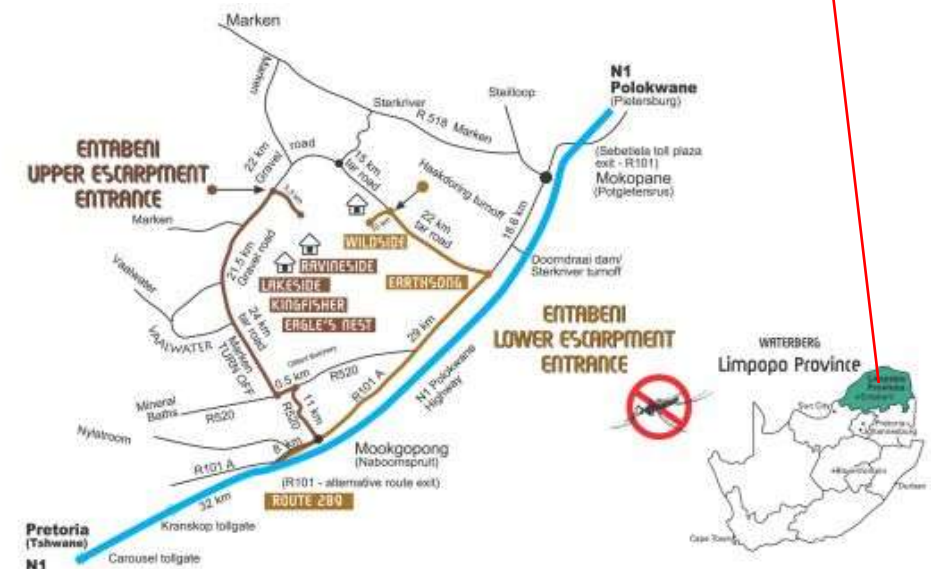


ABOUT THE PROJECT

The conservation work
in more detail

AFRICA

Entabeni is set within a tranquil, natural setting boasting changing vistas, diverse eco-systems and a breath-taking mountainous backdrop. Entabeni is the integration of a 22,000 hectare Big 5 Game Reserve, a resort and luxurious lodges.



A place that promotes the connection between people and nature

The Waterberg contains pristine habitats, abundant bird and wildlife and has a natural unspoilt beauty. The Waterberg is an escarpment of massive sandstone buttresses and outcrops, incorporating many rivers, streams and wetlands, stretching for 150 km in a long arc.

The Waterberg has many special and unique characteristics which is why UNESCO approved the area for biosphere reserve status in 2001.

The Waterberg is a critical conservation area for; African wild dogs, with the last free-roaming pack in South Africa; black and white rhino, with the third largest population within South Africa; and the Cape vulture, with the largest colony of 800 breeding pairs.



Waterberg Wildlife & Veterinary Course – Entabeni

This course provides the opportunity for hands-on practical wildlife experience for pre-vet, vet nurses, technicians or those studying in the veterinary field.

Based at the reserve's research camp working directly with the wildlife monitoring team; this department runs and manages the day-to-day decisions and monitoring of the wildlife and ecosystem of the reserve.

The team and their work are crucial to the management and welfare of all wildlife on the reserve, as they monitor the animals' conditions, herd structures, locations and behaviours.

Time will be spent working with the reserve's veterinarian and other local wildlife vets with whom the team work.



ABOUT THE PROJECT

AFRICA

Course fundamentals and structure

- Gain an understanding of wildlife research and management that govern veterinary practices on reserve
- Expose participants to behind-the-scenes wildlife conservation and veterinary work
- Wildlife management and conservation challenges
- Gain experience in a variety of veterinary wildlife and conservation working environments
- Assess vegetation types suitable for wildlife
- Take part in conservation research
- Tracks and tracking of 'Big Five'
- Learn about the 'Waterberg Wild Dog Project'
- Experience rhino rehabilitation and protection through veterinary management
- Learn about a wildlife vet's role and responsibilities
 - Immobilisation and capture techniques used for various wildlife species
- Appreciate the importance of herd health and intensive wildlife breeding
- Observe APU activities
- Equine management

ABOUT THE PROJECT

AFRICA

Course fundamentals and structure – Example itinerary

Week 1

Introduction to Entabeni Safari Conservancy and various research projects

Introduction to wildlife veterinary work in the context of African wildlife (*Dr Zoe Glyphis – Local wildlife vet*) – 1 day

Rhino orphanage – assist with orphaned rhino calves

Time spent with wildlife team conducting conservation activities – 4 days

Assisting with horse care

Week 2

Time spent with wildlife team conducting conservation activities – 3 days

Further insight into wildlife veterinary work (*TBC – Dr Pierre Bester*) – 1 day

Build up to possible intervention and planning

Specialist wildlife vet to conduct intervention with group** (*TBC – Dr Pierre Bester*) – 1 day

***dependant on veterinary needs of the reserve at the time*



ABOUT THE PROJECT

AFRICA

Possible lectures & debate

- Drugs used in wildlife medicine & calculating doses
- Parasite control
- Darting wildlife
- Orphaned rhino rehabilitation
- Boma management and rehabilitation
- Logistics of wildlife transportation: customised vehicles, crates and equipment
- Managing game reserves and 'Land capacity model'
- Species control – predator pits
- Game capture systems
- The '*Game Trade-Auction*' and value of livestock
- State veterinary disease control in practice
- Documentation required: Red Cross Permits



ABOUT THE PROJECT

AFRICA

A veterinarian's role in the field



ANY QUESTIONS?

INFO@GAPAFRICAPROJECTS.COM | +44 (0)207 1937819

Project Presentation 10

ABOUT THE PROJECT

AFRICA

The vets: Dr Zoe Glyphis – Wildlife veterinarian – Predator specialist

Dr Zoe Glyphis has become one of South Africa's leading predator specialists and is on the forefront with veterinary medicine and veterinary assistance of wild dog, hyena and cheetah conservation all over South Africa.

She helps and assists several NGO groups and organisations with their efforts to increase predator ranges and to establish safe and genetically viable populations in new conservation areas.



ABOUT THE PROJECT

AFRICA

The vets: Dr Pierre Bester – Wildlife veterinarian – Rhino specialist

'Rhino Orphanage' veterinarian, Dr Pierre Bester has a mixed animal practice treating large and small domestic animals as well as wildlife. The main scope of his work includes the immobilisation, treatment and translocation of African wildlife, including megaherbivore; rhinos and elephants.

He has been involved with the immobilisation and translocation of thousands of rhinos, as well as countless other species.



The 'Rhino Orphanage'

The 'Rhino Orphanage' was the first-ever specialised, non-commercial centre dedicated to the rescue, rehabilitation, raising and release of orphaned rhinos back into the wild.

Although newborn rhinos can weigh up to 50 kgs, they are essentially "helpless" and require protection so that they may survive and ultimately thrive.

Rhino calves and rhino mothers are closely bonded. Rhino young are fiercely protected by their mothers in the wild, so when a rhino mother is killed, the rhino orphan becomes particularly vulnerable, and their longevity is endangered. Under normal circumstances, rhino calves will stay with their mothers for around 3 years. For this reason, the rhino orphans in their care typically require the same intensity and timeframe of nurturing from the carers.

All rhino orphans arrive particularly traumatised, so a lot of care and veterinary support is often needed to help them recover and to keep them thriving.



ABOUT THE PROJECT

AFRICA

The 'Rhino Orphanage'



ABOUT THE PROJECT

AFRICA

Introduction to darting techniques

Learn the basic principles for darting wildlife.

Each participant will have the opportunity to use the gas-powered dart gun at the range.



ABOUT THE PROJECT

AFRICA

Introduction to pharmacology



ANY QUESTIONS?

INFO@GAPAFRICAPROJECTS.COM | +44 (0)207 1937819

Project Presentation 16

ABOUT THE PROJECT

AFRICA

Observable species veterinary necropsies



ANY QUESTIONS?

INFO@GAPAFRICAPROJECTS.COM | +44 (0)207 1937819

Project Presentation 17

ABOUT THE PROJECT

AFRICA

Bush skills – Bush walks, tracking wildlife



ANY QUESTIONS?

INFO@GAPAFRICAPROJECTS.COM | +44 (0)207 1937819

Project Presentation 18

ABOUT THE PROJECT

AFRICA

Anti-Poaching Unit (APU) activities



ANY QUESTIONS?

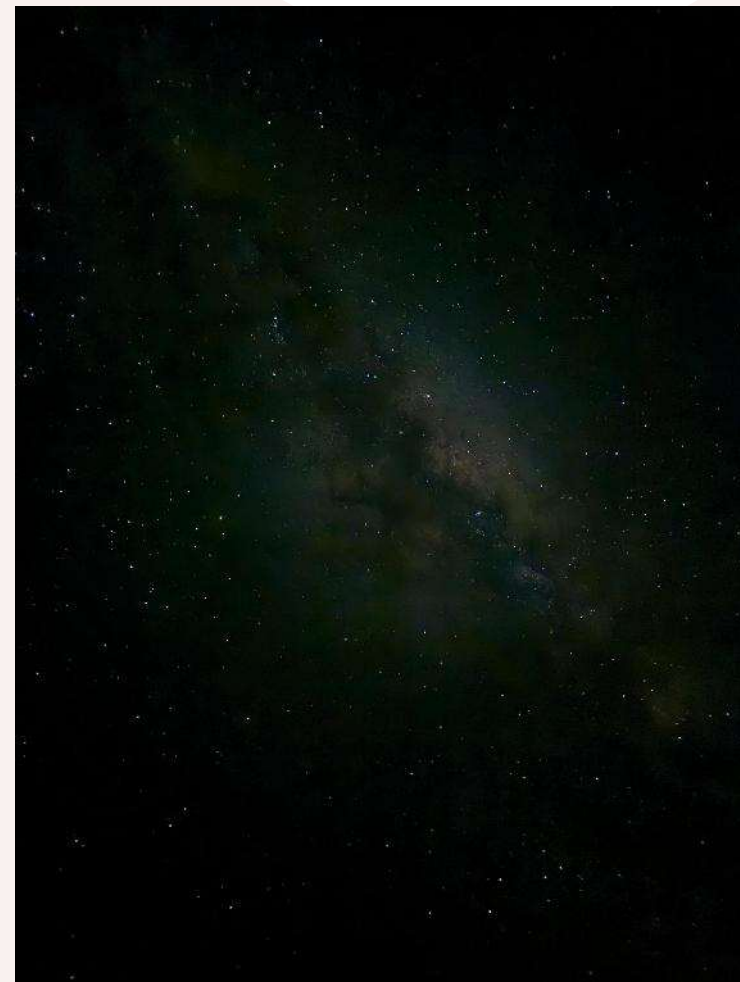
INFO@GAPAFRICAPROJECTS.COM | +44 (0)207 1937819

Project Presentation 19

ABOUT THE PROJECT

AFRICA

Night game drives



ANY QUESTIONS?

INFO@GAPAFRICAPROJECTS.COM | +44 (0)207 1937819

Project Presentation 20

ABOUT THE PROJECT

AFRICA

Reserve research projects – Camera trap: research study



ABOUT THE PROJECT

AFRICA

Reserve research projects – Monitoring the Entabeni rhino population

Behavioural observations, photos and GPS locations are recorded to document where the animals are occurring; keeping tabs on the localities and activities of white and black rhino on the reserve.

Importantly also monitor body condition, injuries, mating, calving, behaviour, herd structure etc.



ABOUT THE PROJECT

AFRICA

Reserve research projects – Habitat and prey selection: predators



ANY QUESTIONS?

INFO@GAPAFRICAPROJECTS.COM | +44 (0)207 1937819

Project Presentation 23

ABOUT THE PROJECT

AFRICA

Reserve research projects – Elephant monitoring & fertility study



ANY QUESTIONS?

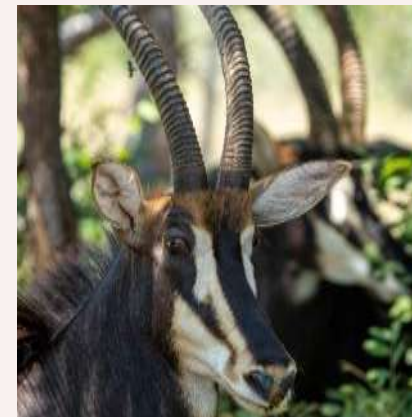
INFO@GAPAFRICAPROJECTS.COM | +44 (0)207 1937819

Project Presentation 24

ABOUT THE PROJECT

AFRICA

Reserve research projects – Monitoring herbivore condition and health



ANY QUESTIONS?

INFO@GAPAFRICAPROJECTS.COM | +44 (0)207 1937819

Project Presentation 25

ABOUT THE PROJECT

AFRICA

Veterinary intervention – dependant on wildlife & veterinary circumstances

Previous intervention – Rhino: fitting of prosthetics



ANY QUESTIONS?

INFO@GAPAFRICAPROJECTS.COM | +44 (0)207 1937819

Project Presentation 26

ABOUT THE PROJECT

AFRICA

Veterinary interventions –dependant on wildlife & veterinary circumstances

Previous intervention – Rhino: sinus infection



ANY QUESTIONS?

INFO@GAPAFRICAPROJECTS.COM | +44 (0)207 1937819

Project Presentation 27

ABOUT THE PROJECT

AFRICA

Veterinary interventions – dependant on wildlife & veterinary circumstances

Previous intervention – Lion: immobilisation for collaring & removal



ANY QUESTIONS?

INFO@GAPAFRICAPROJECTS.COM | +44 (0)207 1937819

Project Presentation 28

ABOUT THE PROJECT

AFRICA

Veterinary interventions – dependant on wildlife & veterinary circumstances

Previous intervention – Cheetah: relocation as part of Endangered Wildlife Trust (EWT) management plan



ANY QUESTIONS?

INFO@GAPAFRICAPROJECTS.COM | +44 (0)207 1937819

Project Presentation 29

ABOUT THE PROJECT

AFRICA

Veterinary interventions – dependant on wildlife & veterinary circumstances

*Previous intervention – African wild dog: free-roaming wild dog project collaring – **all will have a lecture***



ANY QUESTIONS?

INFO@GAPAFRICAPROJECTS.COM | +44 (0)207 1937819

Project Presentation 30



Entabeni Safari Conservancy

Accommodation & lifestyle

Entabeni Research Camp (Ravenside)

The research camp is within the reserve on the Upper Escarpment, at the base of the iconic Entabeni mountain.

It consists of modern shared accommodation units in a comfortable communal setting.

The one-bedroom ensuite units have a lounge/study area. Two to three participants are accommodated per bedroom unit.

There is a communal washing machine for participants to do their laundry, as well as an outdoor and indoor communal living space for relaxation.

Two sets of linen and towels are provided per participant for the entire period of stay.

All meals are included; there is a large communal kitchen where food will be prepared in groups.

Some days lunch will be taken at camp, other days lunch will be brought into the field as a picnic.

Evenings are spent at leisure around the campfire.

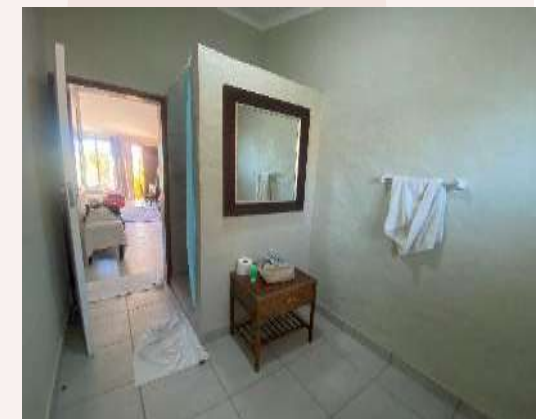
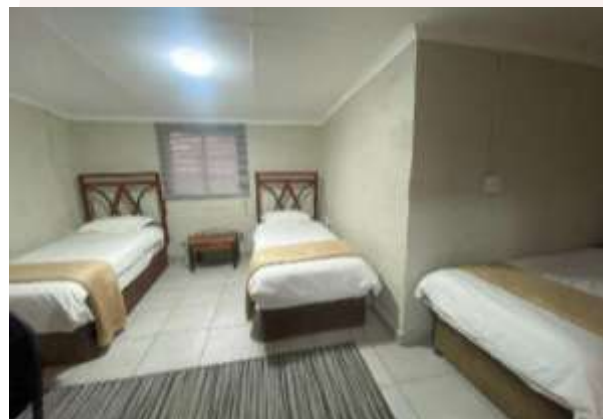
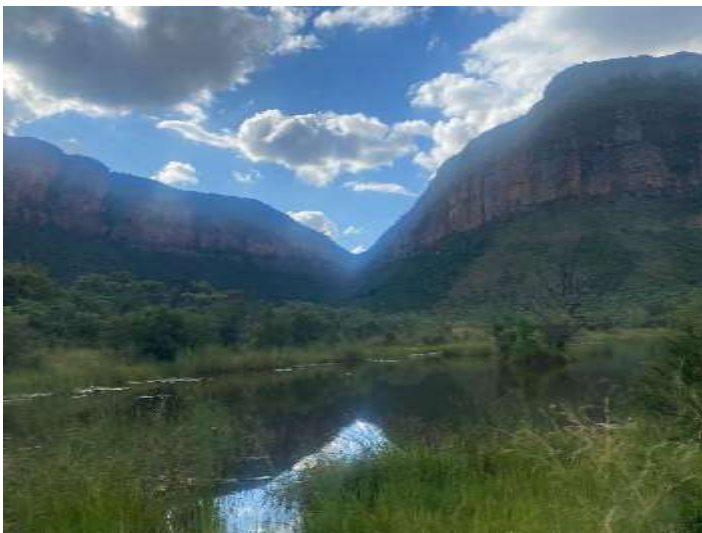
Sunday will be an off day to 'chill' in camp or do extra activities.



ACCOMMODATION & LIFESTYLE

AFRICA

Entabeni Research Camp (Ravenside)



ANY QUESTIONS?

INFO@GAPAFRICAPROJECTS.COM | +44 (0)207 1937819

Project Presentation 33

ACCOMMODATION & LIFESTYLE

AFRICA

Optional weekend activities: Sunday (own cost & arranged at camp)

- Horse riding*: 1 hour – R590 pp & 2 hours R1090 pp
- Sunset cruise includes finger foods & soft drinks) – R690 pp
- 'Cultural- Foundation Drumming' session – R600 pp
- Guided bush walk (non-predator) – R300 pp
- Guided bush Walk (predator) – R800 pp
- Stargazing – R790 pp
- Bicycle rental – 4 hours at reserve clubhouse – R120 pp
- Spa massages R320 – R830 pp
- 'Marimba Band and Pedi dancers' – *Group activity enquire for rates*
- Game drive and boat cruise with lunch at Lakeside – R890 pp
- Picnic lunch at Yellow-wood Gorge Mountain pool – 890 pp



ACCOMMODATION & LIFESTYLE

AFRICA

Sunday additional activities (own cost & arranged at camp)

**Rider weight restriction -106 kg)*



ANY QUESTIONS?

INFO@GAPAFRICAPROJECTS.COM | +44 (0)207 1937819

Project Presentation 35



USEFUL INFORMATION

Inclusions/exclusions &
recommended kit list

Suggested kit list

- Short sleeve shirts
- Long work trousers and shorts (or work trousers with zip-off longs)
- T-shirts & shorts (not hotpants)
- Sweatshirt/Fleece (winter months pack plenty)
- Hiking Boots/comfortable walking shoes to work in every day
- Trainers & sandals / comfy shoes to wear after work hours
- Rain jacket
- Padded parka jacket/windbreaker – warm
(*it can get very cold on an open vehicle – even on a summer evening*)
- Socks & underwear
- Changes of casual clothes for evenings
- Beach towel
- Swimming costume
- Hat for sun protection / Warm hat (in winter only)
- Gloves for warmth (in winter only)

- Toiletries
- Daypack rucksack
- Tick / insect repellent
- Binoculars
- Torch/headlamp
- Water bottle
- Personal medical items/First Aid Kit
- Sunscreen

Other useful items:

- Camera
- Spare batteries
- Cards/music
- Mammal/bird book
- Power bank
- Notebook/diary and pen

WHY SHOULD I TRAVEL?

AFRICA

What do previous travellers say about the 'Waterberg Wildlife & Veterinary Programme'?

*"The post-mortem **helped** massively with anatomy and physiology **revision!**"*
Student VN

*"I am more **humbled**. I know what I want to do moving forward career-wise"*
Student VN



"I feel this was a brilliant opportunity for students to have a greater insight into what we can actually do as veterinary nurses. It has inspired me to look into more volunteering once qualified. Thank you for offering this opportunity to me I will be forever grateful." ...

"Ps. The rhino orphanage are desperate for coiled equine iv lines! In case any future students wish to take donations"

Reference: GAP Africa Projects 'Post-project trip questionnaire' - 23/24

Reference: GAP Africa Projects 'Post-project trip feedback' – Mar 25

WHY SHOULD I TRAVEL?

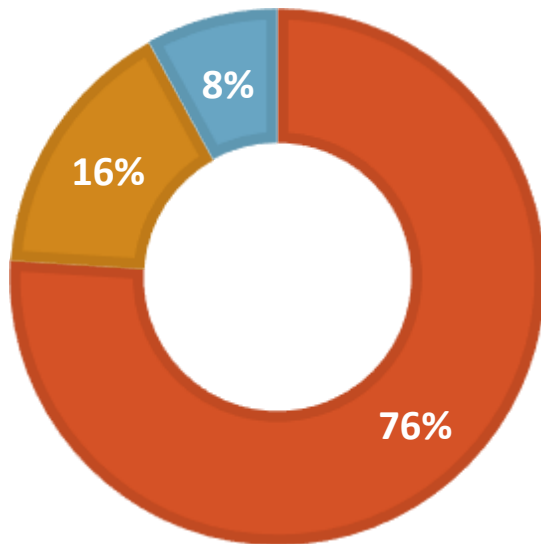
AFRICA

Will this trip improve my personal development?

Our previous student travellers stated:

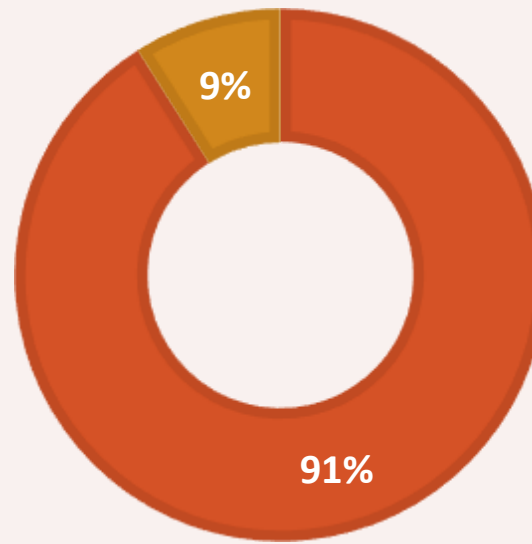
MENTAL HEALTH IMPROVEMENT

■ Yes ■ No ■ NA



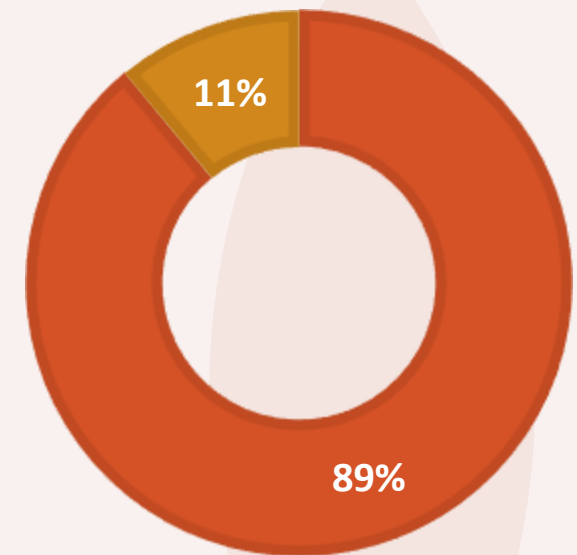
CONFIDENCE IMPROVEMENT

■ Yes ■ No



RESILIENCE IMPROVEMENT

■ Yes ■ No



Reference: GAP Africa Projects 'Post-project trip questionnaire' - 23/24



AFRICA

BOOKING YOUR ADVENTURE

Your next steps to the trip of a
lifetime!

WHAT'S INCLUDED

AFRICA

What is included?

- Flights (*can book own if desirable or not travelling from the UK*)
- In country transfers to/from project*
- Accommodation
- Three meals per day
- All activities as part of the project inc. lectures
- 1 planned veterinary intervention
- Airport meet/greet
- 24/7 In-country support

** For those with own flights: If flights arrive/depart in time for scheduled group transfers*

NOT included

- Personal travel insurance **
- Meals on travel days – before arriving & after departing from project
- Any activities not specified as part of the project
- Weekend activities
- Visa's/travel documents
- Tips

*** We recommend you take out insurance as soon as your booking is confirmed*

BOOKING YOUR ADVENTURE

AFRICA

Dates for veterinary professional 2026 trips

Trip	Travel dates	Reserve dates	Days at reserve	Cost
1 - 4718	Depart 5 th Apr	6 th -18 th Apr	12	£2,795
	Return 19 th Apr			
2* - 4719	Depart 10 th May	11 th -23 rd May	12	TBC
	Return 24 th May			
3** - 4720	Depart 2 nd Aug	3 rd -15 th Aug	12	TBC
	Return 16 th Aug			

Trip cost:

£2,595 - £2,895 est.

Price dependent on flight prices & based on a group of 14

*Trip 2 price to be confirmed end May 25 &

**Trip 3 end Aug 25 when flights can be booked

Key booking deadlines are:

1. Return of booking forms or online application by: **13th June 25**
2. Deposit of £300 to confirm placement within two weeks of provisional booking submission to confirm place
3. 1st Instalment payment of **50% - due 16 weeks** before departure: Trip 1: 14th Dec 25 ; Trip 2: 18th Jan 25 & Trip 3: 12th Apr 26
4. Balance payment **due 8 weeks** before departure: Trip 1: 8th Feb 26; Trip 2: 15th Mar 26 & Trip 3: 7th Jun 26
5. E tickets will be issued 2 weeks prior to departure and emailed to participants

AFRICA

BOOKING FORM

AFRICA

Scan the QR code or use the url to access the trip booking form

Trip 1 – booking form



<https://gapafricaprojects.com/26-4718-vpg-esc/>

Trip 2 – booking form



<https://gapafricaprojects.com/4719-vpg-esc/>

Trip 3 – booking form



<https://gapafricaprojects.com/26-4720-vpg-esc/>

Gap's 'Sustainability & Social, Economic Responsibility'

Local employment from rural communities – our project partners employ a high percentage of staff from local communities. They advocate training to advance careers in hospitality, wildlife and conservation.

Low environmental impact camps – our project bush camps are built with minimal impact on the environment. Resources from the surrounding area are utilised for buildings, water is (where possible) pumped from local river sources and green energy supplies, such as solar are championed.

Community donations and support – we encourage all our international study groups to be proactive in donation collections and arrange for excess baggage for said donations to be taken out to South Africa in support of the local communities.

Move Africa, supporting young females – 3 in 10 girls in South Africa miss a week of school every month because they cannot afford basic sanitary products. Our project partners work with Move Africa alongside their partner NGOs, to distribute menstrual cups to the local communities and provide education workshops.

Rhino Art – Project rhino realises the enormous responsibility the youth must ensure our wildlife is protected for many generations to come. They ensure they can reach and educate as many kids as possible through Rhino Art, using art workshops to teach about conservation. This initiative is supported by our local project partners.

Food/crop education – our project partners encourage food and crop education to rural communities, where cost of living to low-income families and distance travelled to obtain basic resources can prove problematic. Projects include community allotments and providing education on best practice for crop rotations, harvest seasons and nutrition.

Recycling workshops – Litter, and in particular plastics, is a major issue and threat to the ecosystem in Southern Africa. Rural communities have limited waste removal available, and it is therefore a problem escalating at an alarming rate. Recycling workshops are provided through local schools to help educate children on the importance of correctly disposing of litter and recycling plastics.



GLOBAL reach. **ADVENTURE** for all. **PROJECTS** to inspire.

Explore our network of Global Adventure Projects:



GLOBALADVENTUREPROJECTS.COM

