



Myerscough College Group Presentation

The background is a collage of three images. On the left, two men in field gear are working on a lioness in a grassy area. In the center, a sunset over a savanna landscape is reflected in a body of water. On the right, a close-up of a kudu antelope's head is shown.

Waterberg Wildlife & Veterinary Course

AFRICA

GLOBAL reach. **ADVENTURE** for all. **PROJECTS** to inspire.

ABOUT US:

AFRICA

GAP Africa Projects

- We are a specialised travel company that offers academic trips and volunteering opportunities for groups and individual travellers, in a number of locations worldwide
- We pride ourselves on curating experiences which are personalised to your needs and requirements
- Our first project travelled in 2012
- Full ATOL Bonding
- Working with over 50 Colleges and Universities around the UK
- A small dedicated team in the UK and South Africa.





AFRICA

ABOUT THE WATERBERG

Project overview and
location

ABOUT THE WATERBERG

AFRICA

Your Conservation Field Trip Explained

- A unique conservation experience based in South Africa
- Live in a research camp on a wild African game reserve
- 12 day programme specifically tailored for VN students
- Learn about conservation management
- Project Activities include:
 - Pioneering Conservation Research
 - Conservation Activities
 - Veterinary interventions and activities
- Dedicated vehicles and conservation staff
- All inclusive experience
- The most incredible wildlife experience you will ever have

ABOUT THE PROJECT

AFRICA

What is a Game Reserve?

- A game reserve is a large area of protected land where wild animals can live safely.
- Wildlife is free roaming throughout the reserve allowing them to thrive in their natural habitat.
- Reserves are either Government Owned (National Parks) or Privately Owned/Managed.
- Most reserves will have physical boundaries i.e. electrified fence line.
- Due to physical boundaries, wildlife must be managed due to restraints on population growth, migration and resources.
- Wildlife is protected but also utilised as a tourist attraction (Eco Tourism) which creates funding for conservation efforts and research.



ABOUT THE WATERBERG

AFRICA

Entabeni Safari Conservancy

- 22 000 Hectare Privately Managed Game Reserve
- Forming part of the Waterberg Biosphere (662 059 ha)
- Work alongside the conservation team including:
 - Wildlife Vets
 - Conservation Researchers
 - Ecologists
 - Anti Poaching Unit
- Located in a Malaria free zone
- Proclaimed Protected Conservation Area
- Savannah Eco System
- Student Camp Accommodation



ABOUT ENTABENI

AFRICA

Entabeni Safari Conservancy – Location



ABOUT ENTABENI

AFRICA

Entabeni Safari Conservancy – Location

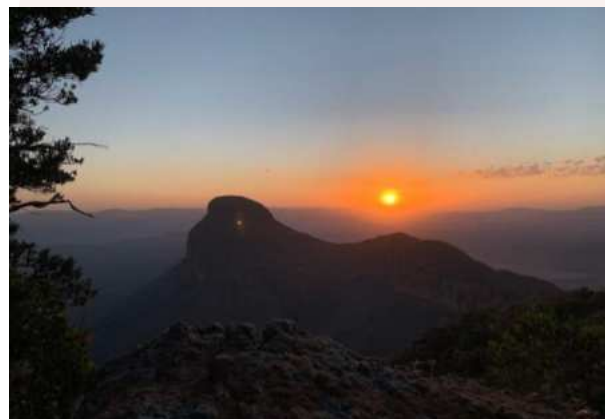
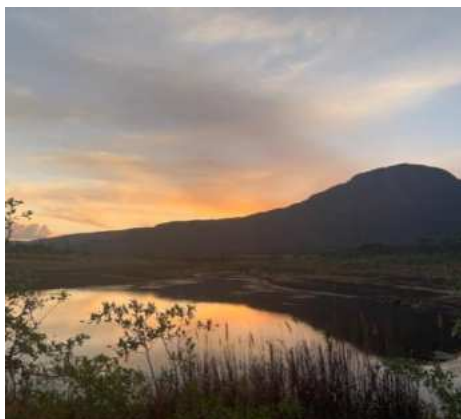
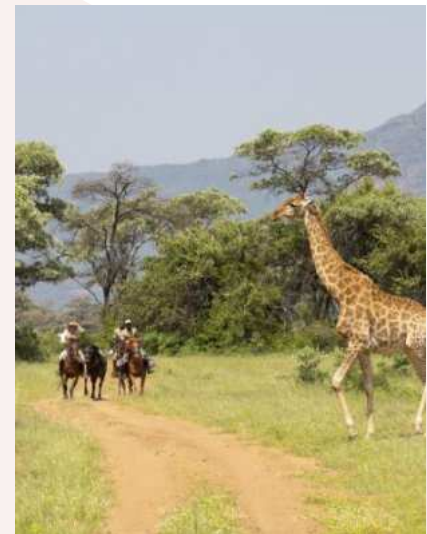
- South Africa a world leader in conservation
- Malaria free Waterberg Plateau



ABOUT THE WATERBERG

AFRICA

Known for its dramatic landscape



ANY QUESTIONS?

INFO@GAPAFRICAPROJECTS.COM | +44 (0)207 1937819

Project Presentation 9

ABOUT THE WATERBERG

AFRICA

Home to the BIG 5



ANY QUESTIONS?

INFO@GAPAFRICAPROJECTS.COM | +44 (0)207 1937819

Project Presentation 10

ABOUT THE WATERBERG

AFRICA

Home to over 60 Species of Mammal



ANY QUESTIONS?

INFO@GAPAFRICAPROJECTS.COM | +44 (0)207 1937819

Project Presentation 11

ABOUT THE WATERBERG

AFRICA

Many Reptile, Insect and Bird Species



ANY QUESTIONS?

INFO@GAPAFRICAPROJECTS.COM | +44 (0)207 1937819

Project Presentation 12



AFRICA

ABOUT THE PROJECT

Our conservation work
in more detail

ABOUT THE PROJECT

AFRICA

Course Fundamentals and Structure

- Gain understanding of wildlife research and management that govern veterinary practices on reserve
- A Wildlife Vets role and responsibilities
- Expose participants to behind the scenes wildlife conservation and veterinary work
- Immobilisation and capture techniques used for various wildlife species
- Rhino protection through Veterinary Management
- Conservation Research
- Wildlife management and conservation challenges
- Appreciate the importance of herd health and intensive wildlife breeding
- Gain experience of a variety of veterinary wildlife and conservation working environments
- Vegetation types suitable for wildlife
- Tracks and tracking of Big Five
- Waterberg Wild Dog Project
- Rhino Rehabilitation

ABOUT THE PROJECT

AFRICA

Course Fundamentals and Structure

WEEK 1

Introduction to Entabeni Safari Conservancy and Research Projects

Introduction to Wildlife Veterinary work in the Context of African Wildlife (Dr Zoe Glyphis – Local Wildlife Vet) – 1 Day

Rhino orphanage – assist with orphaned rhino calves

Time spent with research team conducting conservation activities – 4 Days

Week 2

Time spent with research team conducting conservation activities – 3 Days

Further insight into Wildlife Veterinary work (Dr Pierre Bester) – 1 Day

Build up to possible intervention and planning

Specialist Wildlife Vet to conduct intervention with group**
(Dr Pierre Bester) – 1 Day



ABOUT THE PROJECT

AFRICA

Dr Pierre Bester – Wildlife Veterinarian – Rhino Expert

He has a mixed animal practice (small and large domestic as well as wild) where the scope of his work includes the immobilisation, treatment, and translocation of African wildlife; specialising in rhino.

He's been involved with the immobilisation and translocation of thousands of rhinos, as well as countless other species.



ABOUT THE PROJECT

AFRICA

Dr Zoe Glyphis – Wildlife Veterinarian – Predator Specialist

Dr Zoe Glyphis has become one of South Africa's leading predator specialists and is on the forefront with veterinary medicine and veterinary assistance of wild dog, heyna and cheetah conservation all over South Africa.

She is helping and assisting several NGO groups and organizations with their efforts to increase predator ranges and to establish safe and genetically viable populations in new conservation areas.



ABOUT THE PROJECT

AFRICA

Learning about a Veterinarians role in the field



ANY QUESTIONS?

INFO@GAPAFRICAPROJECTS.COM | +44 (0)207 1937819

Project Presentation 18

ABOUT THE PROJECT

AFRICA

The Rhino Orphanage

The Rhino Orphanage was the first-ever specialised, non-commercial centre dedicated to the rescue, rehabilitation, raising and release of orphaned rhinos back into the wild.

Although new-born rhinos can weigh up to 50kgs, they are essentially “helpless” and require protection so that they may survive and ultimately thrive.



ABOUT THE PROJECT

AFRICA

Introduction of Darting Techniques

Learn the basic principles for darting wildlife. Each student will have the opportunity to use the gas powered dart gun at the range.



ABOUT THE PROJECT

AFRICA

Introduction to Pharmacology



ANY QUESTIONS?

INFO@GAPAFRICAPROJECTS.COM | +44 (0)207 1937819

Project Presentation 21

ABOUT THE PROJECT

AFRICA

Bush Skills – Bush Walks, Tracking Wildlife



ANY QUESTIONS?

INFO@GAPAFRICAPROJECTS.COM | +44 (0)207 1937819

Project Presentation 22

ABOUT THE PROJECT

AFRICA

Monitoring the Entabeni Rhino Population

Behavioural observations, photos and GPS locations are recorded to document where the animals are occurring; keeping tabs on the localities and activities of White and Black Rhino on the reserve.

Importantly also monitor body condition, injuries, mating, calving, behaviour, herd structure etc.



ABOUT THE PROJECT

AFRICA

Research – Habitat and Prey Selection: Predators



ANY QUESTIONS?

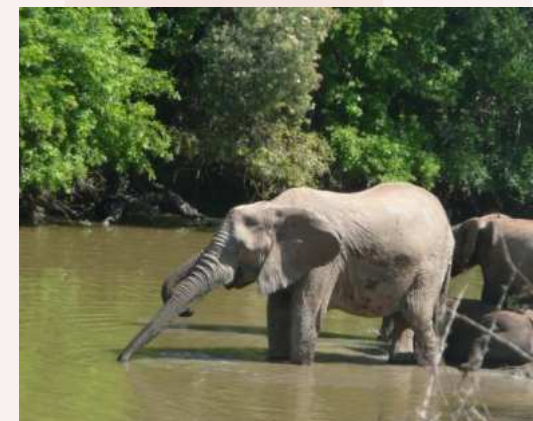
INFO@GAPAFRICAPROJECTS.COM | +44 (0)207 1937819

Project Presentation 24

ABOUT THE PROJECT

AFRICA

Research – Elephant Monitoring & Fertility Study



ANY QUESTIONS?

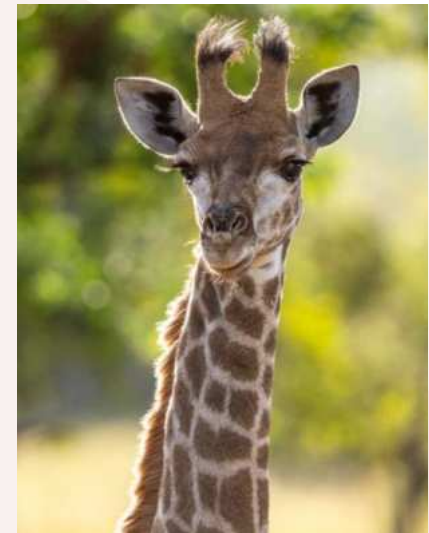
INFO@GAPAFRICAPROJECTS.COM | +44 (0)207 1937819

Project Presentation 25

ABOUT THE PROJECT

AFRICA

Monitoring Herbivore Condition and Health



ANY QUESTIONS?

INFO@GAPAFRICAPROJECTS.COM | +44 (0)207 1937819

Project Presentation 26

ABOUT THE PROJECT

AFRICA

Camera Trap – Research and Study



ANY QUESTIONS?

INFO@GAPAFRICAPROJECTS.COM | +44 (0)207 1937819

Project Presentation 27

ABOUT THE PROJECT

AFRICA

Anti-Poaching Unit



ANY QUESTIONS?

INFO@GAPAFRICAPROJECTS.COM | +44 (0)207 1937819

Project Presentation 28

ABOUT THE PROJECT

AFRICA

Night Game Drives



ANY QUESTIONS?

INFO@GAPAFRICAPROJECTS.COM | +44 (0)207 1937819

Project Presentation 29

ABOUT THE PROJECT

AFRICA

Rhino – Fitting of Prosthetics



ANY QUESTIONS?

INFO@GAPAFRICAPROJECTS.COM | +44 (0)207 1937819

Project Presentation 30

ABOUT THE PROJECT

AFRICA

Rhino – Sinus Infection



ANY QUESTIONS?

INFO@GAPAFRICAPROJECTS.COM | +44 (0)207 1937819

Project Presentation 31

ABOUT THE PROJECT

AFRICA

Lion immobilisation & collaring/removal



ANY QUESTIONS?

INFO@GAPAFRICAPROJECTS.COM | +44 (0)207 1937819

Project Presentation 32

ABOUT THE PROJECT

AFRICA

Cheetah Relocation – Endangered Wildlife Trust (EWT)



ANY QUESTIONS?

INFO@GAPAFRICAPROJECTS.COM | +44 (0)207 1937819

Project Presentation 33

ABOUT THE PROJECT

AFRICA

Necropsies



ANY QUESTIONS?

INFO@GAPAFRICAPROJECTS.COM | +44 (0)207 1937819

Project Presentation 34

ABOUT THE PROJECT

AFRICA

Free-roaming Waterberg Wild Dog – Talks



ANY QUESTIONS?

INFO@GAPAFRICAPROJECTS.COM | +44 (0)207 1937819

Project Presentation 35

ABOUT THE PROJECT

AFRICA

Possible Lectures & Debate

- Drugs used in wildlife medicine
- Calculating doses in wildlife
- Logistics of wildlife transportation: customised vehicles, crates and equipment
- The Game Trade-Auction and value of livestock
- Game capture systems
- Darting wildlife
- Boma management and rehabilitation
- Orphaned Rhino rehabilitation
- Parasite control
- Managing game reserves and Land Capacity Model
- Species control – predator pits
- State veterinary disease control in practice
- Documentation required: Red Cross Permits





AFRICA

ACCOMMODATION & LIFESTYLE

Living in the African Bush

ACCOMMODATION & LIFESTYLE

AFRICA

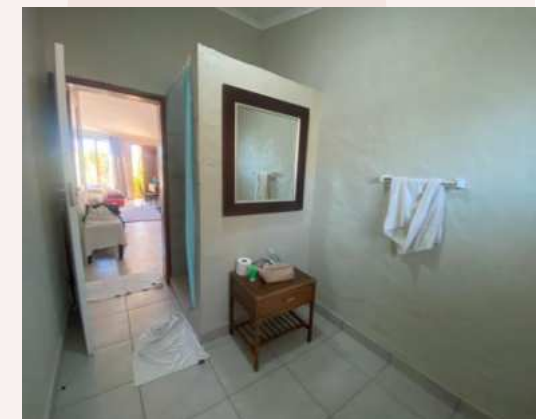
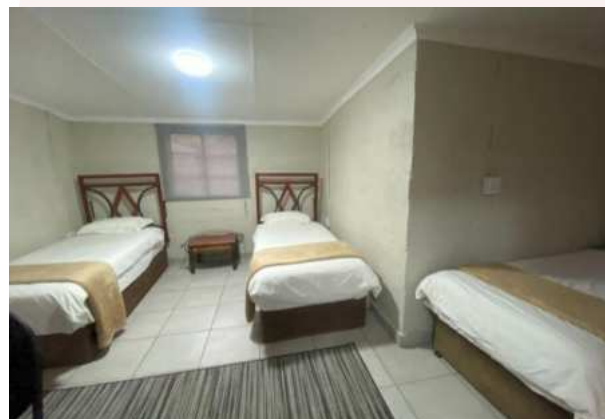
Entabeni Student Camp (Ravenside)

The student camp is in the middle of the reserve and consists of modern shared accommodation units.

The one-bedroom units have a lounge/study area 2/3 students per bedroom unit.

Communal washing machine for students to do their laundry, as well as an outdoor communal living space for relaxation.

Two sets of linen and towels are provided per student for the entire period of stay.



Meals

All meals are included, and there is a communal kitchen where food will be prepared in groups.

Some days lunch will be had back at camp, other days lunch will be brought into the field to be had as a picnic.

Evenings are spent at leisure around the campfire.

Only Sunday will be an off day to 'chill' in camp or do extra activities.



ACCOMMODATION & LIFESTYLE

AFRICA

Sunday additional activities (own cost)

- Horse Riding (1 hour) R590 pp
- Horse Riding (2 Hours) R1090 pp
- Sunset Cruise (Includes finger foods & softdrinks) R690 pp
- Cultural Foundation Drumming session R600 pp
- Guided Bush Walk (Non Predator) R300 pp
- Guided Bush Walk (Predator) R800 pp
- Bicycle Rental - 4 hours at Clubhouse R120 pp
- Spa massages between R320 – R830 pp
- Marimba Band and Pedi Dancers (Group activity enquire for rates)
- Game Drive and Boat Cruise with Lunch at Lakeside R890 pp
- Picnic Lunch at Yellow-wood Gorge Mountain Pool R890 pp



ACCOMMODATION & LIFESTYLE

AFRICA

Sunday additional activities (own cost)



ANY QUESTIONS?

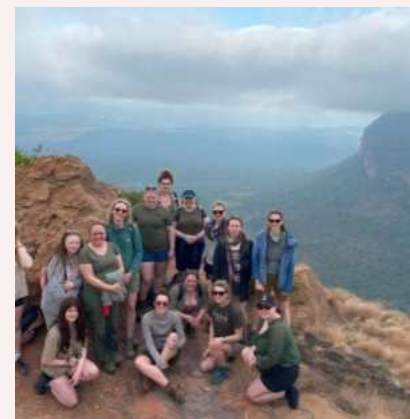
INFO@GAPAFRICAPROJECTS.COM | +44 (0)207 1937819

Project Presentation 41

ACCOMMODATION & LIFESTYLE

AFRICA

Life on Reserve



ANY QUESTIONS?

INFO@GAPAFRICAPROJECTS.COM | +44 (0)207 1937819

Project Presentation 42

WHY SHOULD I TRAVEL?

AFRICA

What do previous travellers say about the Waterberg Wildlife & Veterinary Course?



"The post-mortem **helped** massively with anatomy and physiology **revision!**"



"It is difficult to pinpoint one thing but probably the most **memorable** aspect was being involved in a rhino **sedation** in which the SVNs were **actively** involved!"



"I am more **humbled**. I know what I want to do moving forward career-wise"

Reference: GAP Africa Projects Post Project Trip Questionnaire 23/24

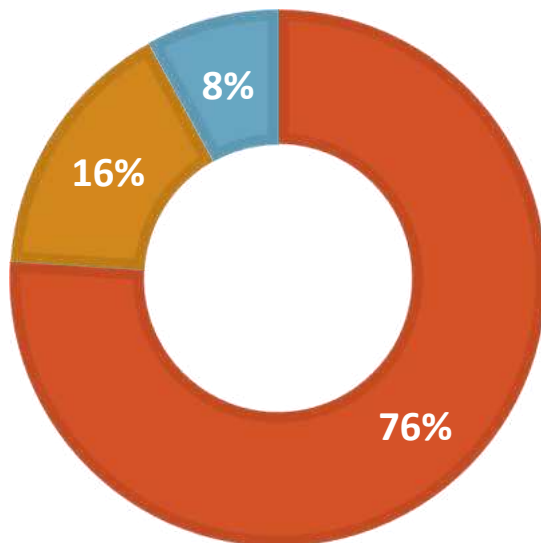
WHY SHOULD I TRAVEL?

AFRICA

Personal Development

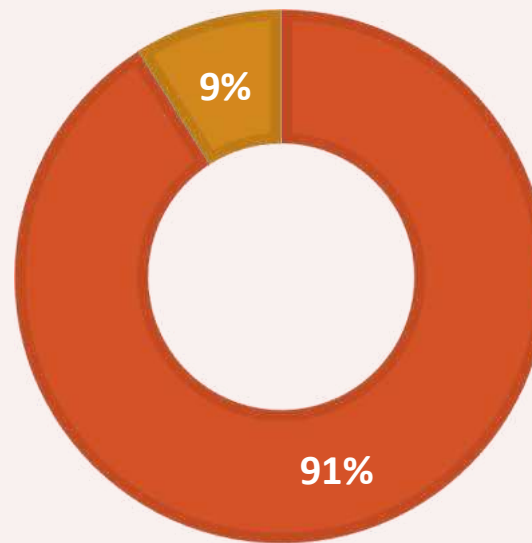
MENTAL HEALTH IMPROVEMENT

■ Yes ■ No ■ NA



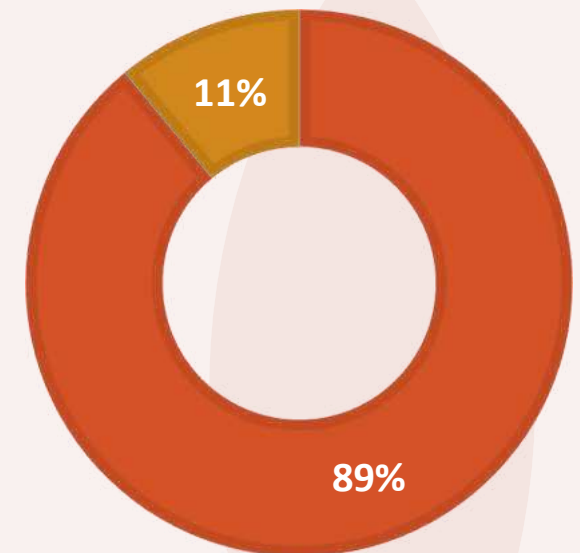
CONFIDENCE IMPROVEMENT

■ Yes ■ No



RESILIENCE IMPROVEMENT

■ Yes ■ No



Reference: GAP Africa Projects Post Project Trip Questionnaire 23/24



AFRICA

BOOKING YOUR ADVENTURE

The next steps to the trip of a
lifetime!

BOOKING YOUR ADVENTURE

AFRICA

What is Included?

- Flights
- Transfers to/from project
- Accommodation
- Three meals per day (self prepared)
- All activities as part of the project
- ATOL protection
- Airport meet/greet
- 24/7 In country support

NOT Included

- Personal Travel Insurance *
- Meals on travel days – before arriving & after departing from project
- Any activities not specified as part of the project
- Visas/travel documents

* We recommend that you take out personal travel insurance as soon as your booking is confirmed.



BOOKING YOUR ADVENTURE

AFRICA

Dates & key deadlines

Proposed trip dates are:

Depart UK: 8th March 2026 | Arrive SA: 9th March 2026

Depart SA: 21st March 2026 | Arrive UK: 22nd March 2026

Trip cost:

£2995 est. (based on a group of 14)

Key deadlines are:

- Return of booking forms or online application by: 23/05/2025
- Deposit of £300 by 20/06/2025
- Instalment payment of 50% due 16 weeks before departure 17/11/2025
- Balance payment due 8 weeks before departure 12/01/2026
- E tickets will be issued 2 weeks prior to departure and emailed to students

AFRICA

Please communicate with us with any questions relating to the field trip

Dear Chloe,

Thank you for choosing to book with Gap Africa Projects as part of the Karadit Collage trip to Zulu Land Conservation Research. Please take the time to look through this document and check that everything is correct.

We have received your deposit payment and your placement is now confirmed as per the details below. The final balance and due date is detailed in your invoice.

Please remember that you can contact us to discuss anything in this document as well as any other aspect of your application and I am on hand to support your personal travel for the entirety of your placement.

Warm regards,
The Gap Africa Team

Passengers Travelling

Milly Choe

Placement(s)

Zulu Land Conservation Research (06/03/23 - 18/05/23)

Inclusions

Flights, travel road transfers to and from Project, accommodation for duration, all meals and all project activities.

Exclusions

Insurance, any expenses undertaken that are not included as part of the project.

Your Flight(s)

05/03/2023	03:10:00	Manchester (MAN)
BA1399	A: 18:05	London Heathrow (LHR)
05/04/2023	03:10:00	London Heathrow (LHR)
BA55	A: 07:25 + 1 S	Athens/Jeddah (JED)
18/05/2023	02:20:15	Athens/Jeddah (JED)
BA66	A: 09:30 + 1 D	London Heathrow (LHR)
19/05/2023	03:30:15	London Heathrow (LHR)
BA1390	A: 10:40	Manchester (MAN)

Your Booking

Travel Advice

Names and surnames

If a name on your passport does not appear on your booking, it is essential this is fixed now. If it is not, you may be refused entry to the relevant country and your flight may be charged for amendments.

Passport expiry date

Your passport must be valid for a minimum 30 days before the departure date for your country of origin. If you do not have a passport that is valid for the minimum 30 days, you may be refused entry to the relevant country and your flight may be charged for amendments.

Passport Copies

It is essential that you have the correct size photographs of your passport. Documents for your passport are available for purchase and free to use in a passport photo booth.

Travel Insurance

Insurance is essential for you and the appropriate travel insurance for your trip. Please remember to take the correct size and colour photograph for what you need your photo. The full passport photo service is available for purchase.

<https://www.gap-africa.com/insurance/>

+44 (0) 207 193 7919

mark.bottle@gap-africa.com

GAP AFRICA PROJECTS
PO BOX 401
SOMERSET
SOMERSET
SOMERSET
SOMERSET

Registration number: 1045830
VAT: 264 097 970
Registration No: 21-00-0000000-0000
Registration No: 21-00-0000000-0000

CONFIRMATION INVOICE				Gap Africa Projects	
Mw Chie				PO Box 116 Droevang Surinam KTY 900 United Kingdom Tel: +44 (0) 20 7373 7373 Email: info@gapaficaprojects.co.uk	
					
UK					
Date:	10/10/2022				
Invoice No:	23 KCA-CA2-G2-IR				
Booking Ref:	4023				
Projects, Payments, Dates & Amounts					
Description	Qty	Amount	Departure		
* Zulu Land Conservation Research					
	1	00/01/2023	18/02/2023		
Flights					
Flight No.	Date	Start Time	Arrival Time	Departure Point	Arrival Airport
BA1199	05/03/2023	13:00	16:00	Manchester (MAN)	London Heathrow (LHR)
BA55	05/03/2023	18:30	07:25 + 1 Day	London Heathrow (LHR)	Johannesburg (JNB)
BA56	18/03/2023	20:15	00:30 + 1 Day	Johannesburg (JNB)	London Heathrow (LHR)
BA1300	19/03/2023	08:30	10:40	London Heathrow (LHR)	Manchester (MAN)
Non-refundable cancellation charges					
<p>Miss Christ Capelin, Gap Africa Projects is licensed under the "Air Travel Organiser's Licence" number 310990. This trip is financially protected by this ATOL. License and we will also supply an ATOL Certificate. Please visit www.atol.org.uk for more information about financial protection and the ATOL Certificate.</p>					
Invoice Amounts					
Description	Start	Amount			
* Total cost of the arrangements as specified above		£	2,585.00		
* Deposit Payment		£	300.00		
			Total balance due to Gap Africa Projects		
			19/11/2022 £ 2,285.00		
<p>Payment Methods</p> <p>Cheques: Payable to GAP AFRICA PROJECTS LTD.</p> <p>Bank Transfer: Account No. 43809756 Sort Code: 20-80-77 SWIFT: NARCGB33 IBAN: GB43237604287346000158</p>					
<p>For all bank transfers, please use your surname and booking number 4023 as reference. For transfers outside of the UK, please ensure that international transfer charges are covered when making the transaction.</p>					

This is an important document. Make sure that you take it with you when you travel.			
<h1 style="text-align: center;">ATOL Certificate</h1>			
This confirms that your money is protected by the ATOL scheme and that you can get home if your travel company collapses.			
This certificate sets out how the ATOL scheme will protect the people named on it for the parts of their trip listed below.			
Who is protected?		Number of passengers: 18	
What is protected?			
<small>Responsible UK Civil Aviation Authority Licence: 140620000-0000-UK-Civil Aviation Authority Licence 140620000-0000-UK 140620000-0000-UK Civil Aviation Authority Licence 140620000-0000-UK 140620000-0000-UK Civil Aviation Authority Licence 140620000-0000-UK 140620000-0000-UK Civil Aviation Authority Licence 140620000-0000-UK</small>			
You can find more detailed information on your booking, including price, on the confirmation you will receive from Gap Airansa Projects Limited			
Who is protecting your trip? Gap Airansa Projects Limited ATOL Number: 10686			
Your protection			
You are protected from when you were given this certificate to the end of your trip. If Gap Airansa Projects Limited stops trading, the passengers named above will either:			
1 complete their trip and return to the UK; or			
2 receive a refund.			
Your protection depends on the terms of the ATOL scheme (available at www.atol.org.uk).			
If Gap Airansa Projects Limited stops trading, you must follow the instructions at www.atol.org.uk (where there will be details of arrangements to bring people back to the UK, and information on how people can claim their money back) or you can call +44(0) 20 7453 6300.			
By issuing this ATOL Certificate, under Regulation 17 of the Civil Aviation (Air Travel Organisers' Licensing) Regulations, 2011, Gap Airansa Projects Ltd certifies that the trip to which it applies is sold in line with the ATOL held by its organised named airline.			
The ATOL scheme is run by the Civil Aviation Authority and paid for by the Air Travel Trust. To see what that is, and what you can expect, having all information on its terms and conditions go to www.atol.org.uk .			
As well as this protection of the ATOL scheme, you have protection under the Package Travel Regulations. For more information see www.direct.gov.uk in the Travel and Transport section.			
Unique reference number	Date of issue:	ATOL Certificate Issued:	Package sale
A413	18/10/2022	Gap Airansa Projects Ltd	10686

Copyright © All Rights Reserved. No part of this document may be reproduced without written permission from the Civil Aviation Authority.

BOOKING YOUR ADVENTURE

AFRICA

Group Web Page

<https://gapafricaprojects.com/26-4711>



Booking Form

<https://gapafricaprojects.com/booking-form-26-4711-mca-esc-myerscough-college/>



BOOKING FORM

Your Global Adventure Starts here!

Please use the form below to submit your provisional booking to your selected project. You have the option to pay your initial deposit with the submission of your booking form, or we will contact you for payment once your project placement has been secured.

If you'd like to contact us to ask any initial questions or find out more about what project you'd like to go on and when, you can get also get in touch using our short enquiry form, or by calling +44 (0) 207 193 7819.

(NB: Your name should be given as displayed on your passport)

Title *

Name *

Date of birth *

Address *

Sustainability & Social, Economic Responsibility

Local employment from rural communities – our project partners employ a high percentage of staff from local communities. They advocate training to advance careers in hospitality, wildlife and conservation.

Low environmental impact camps – our project bush camps are built with minimal impact on the environment. Resources from the surrounding area are utilised for buildings, water is (where possible) pumped from local river sources and green energy supplies, such as solar are championed.

Community donations and support – we encourage all our international study groups to be proactive in donation collections and arrange for excess baggage for said donations to be taken out to South Africa in support of the local communities.

Move Africa, supporting young females – 3 in 10 girls in South Africa miss a week of school every month because they cannot afford basic sanitary products. Our project partners work with Move Africa alongside their partner NGOs, to distribute menstrual cups to the local communities and provide education workshops.

Rhino Art – Project rhino realises the enormous responsibility the youth have to ensure our wildlife is protected for many generations to come. They ensure they can reach and educate as many kids as possible through Rhino Art, using art workshops to teach about conservation. This initiative is supported by our local project partners.

Food/crop education – our project partners encourage food and crop education to rural communities, where cost of living to low income families and distance travelled to obtain basic resources can prove problematic. Projects include community allotments and providing education on best practice for crop rotations, harvest seasons and nutrition.

Recycling workshops – Litter, and in particular plastics, is a major issue and threat to the ecosystem in Southern Africa. Rural communities have limited waste removal available and it is therefore a problem escalating at an alarming rate. Recycling workshops are provided through local schools to help educate children on the importance of correctly disposing of litter and recycling plastics.



GLOBAL reach. **ADVENTURE** for all. **PROJECTS** to inspire.

Explore our network of Global Adventure Projects:



GLOBALADVENTUREPROJECTS.COM

