



# Warwickshire College and University Centre Project Presentation



## KwaZulu Wildlife & Community

**GLOBAL** reach. **ADVENTURE** for all. **PROJECTS** to inspire.



# ABOUT US:

AFRICA

## GAP Africa Projects

- We are a specialised travel company that offers academic trips and volunteering opportunities for groups and individual travellers, in a number of locations worldwide
- We pride ourselves on curating experiences which are personalised to your needs and requirements
- Our first project travelled in 2012
- Full ATOL Bonding
- Working with over 50 Colleges and Universities around the UK
- A small dedicated team in the UK and South Africa.





**AFRICA**

# **KWAZULU WILDLIFE & COMMUNITY PROJECT OVERVIEW**

Overview and location  
of the project

# ABOUT THE PROJECT

AFRICA

## Your Conservation Field Trip Explained

- A unique academic conservation experience based in South Africa
- Live and work in the wild of Africa
- The opportunity to experience hands on wildlife conservation
- Bespoke, tailor made projects to suit research requirements
- Project Activities include:
  - Pioneering Conservation Research
  - Conservation Activities
  - Cultural Enrichment
- Full 12 nights in South Africa
- All inclusive experience
- The most incredible wildlife experience you will ever have

## What is a Game Reserve?

- A game reserve is a large area of protected land where wild animals can live safely.
- Wildlife is free roaming throughout the reserve allowing them to thrive in their natural habitat.
- Reserves are either Government Owned (National Parks) or Privately Owned/Managed.
- Most reserves will have physical boundaries i.e. electrified fence line.
- Due to physical boundaries, wildlife must be managed due to restraints on population growth, migration and resources.
- Wildlife is protected but also utilised as a tourist attraction (Eco Tourism) which creates funding for conservation efforts and research.





**AFRICA**

# ABOUT THE PROJECT

Our conservation work  
in more detail

## KwaZulu Wildlife Community

Our academic team and qualified rangers at the KwaZulu Wildlife & Community Project offer a bespoke course to each institution dependent on their own personal objectives and learning needs.

We set out the basis of the trip, comprising of a 12-nights academic module split between the conservation reserve and the surrounding community with 3 nights at St Lucia Coastal Unit



A full day will be planned but will vary from day to day depending on the day's task and research goals.

The project split and duration are as follows:

### 12-Night Itinerary

10 nights  
Bonamanzi Game Reserve and Hluhluwe surrounds

2 nights  
St Lucia Coastal Project

# ABOUT THE PROJECT

AFRICA

## Location







AFRICA

# BONAMAMZI/HLUHLUWE

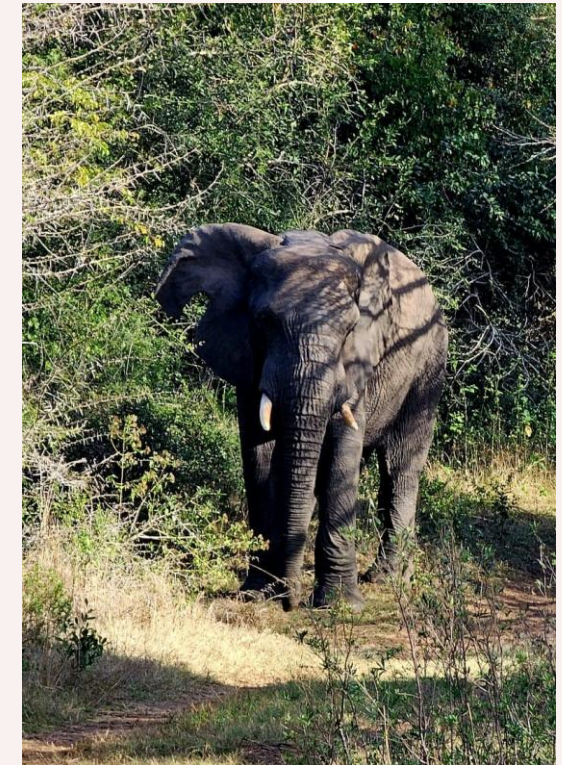
A Big Four Game Reserve

# BONAMANZI GAME RESERVE

AFRICA

## Bonamanzi Game Reserve – 10 nights

Bonamanzi Game Reserve is a magnificent 10,000 acres of unspoiled wilderness boasting the Big 4 and incredible biodiversity (grasslands, riverine bush, savannah and thornveld) offering unprecedented diversity of wildlife.



# ABOUT THE PROJECT

AFRICA

## Bonamanzi

Bonamanzi is a privately owned Game Reserve, 10,000 acres in size with the Hluhluwe River on its Eastern border. Proclaimed a Natural Heritage Site in 1995 in recognition of the biodiversity of the Reserve it offers sand forests, savanna and wetland areas. This diversity is why Bonamanzi is recognized as one of the best birding destinations in Southern Africa.



ANY QUESTIONS?

[INFO@GAPAFRICAPROJECTS.COM](mailto:INFO@GAPAFRICAPROJECTS.COM) | +44 (0)207 1937819

INFORMATION PACK 11

# BONAMANZI GAME RESERVE

AFRICA

Home to over 40 Species of Mammal



ANY QUESTIONS?

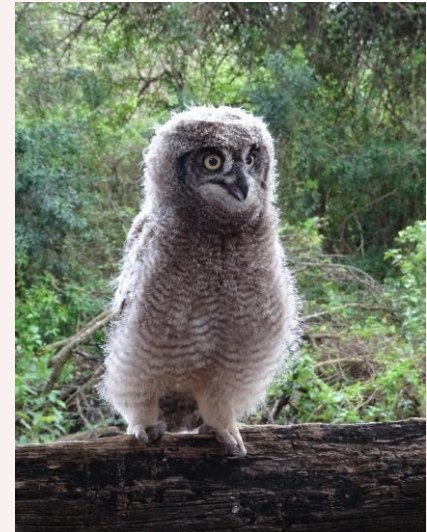
[INFO@GAPAFRICAPROJECTS.COM](mailto:INFO@GAPAFRICAPROJECTS.COM) | +44 (0)207 1937819

INFORMATION PACK 12

# BONAMANZI GAME RESERVE

AFRICA

## Birds /Reptiles



ANY QUESTIONS?

[INFO@GAPAFRICAPROJECTS.COM](mailto:INFO@GAPAFRICAPROJECTS.COM) | +44 (0)207 1937819

INFORMATION PACK 13

# BONAMANZI GAME RESERVE

AFRICA

## Your Conservation Programme

Students will be taught and work alongside the field guides and conservation team. The following examples depict the day-to-day activities that may be undertaken as part of the project at Nambiti.

- Use of Telemetry Tracking
- Elephant Monitoring
- Rhino Monitoring – Awareness
- Anti-poaching talk and fence walk
- Camera Trapping
- Night Drive
- Alien Vegetation Control / Reserve Maintenance
- Habitat and Prey Selection of Predators
- Tracks, Signs and Spoor
- Community Development



# BONAMANZI GAME RESERVE

AFRICA

## Use of Telemetry Tracking



ANY QUESTIONS?

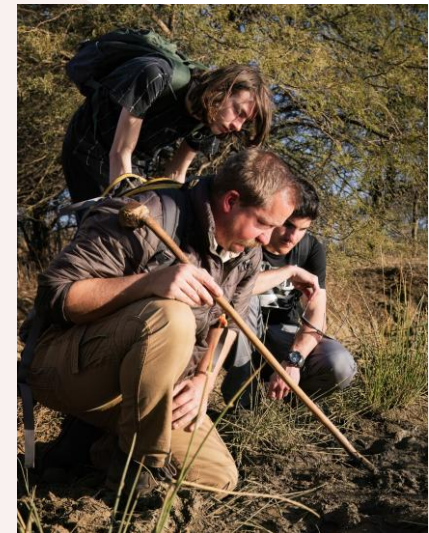
[INFO@GAPAFRICAPROJECTS.COM](mailto:INFO@GAPAFRICAPROJECTS.COM) | +44 (0)207 1937819

INFORMATION PACK 15

# BONAMANZI GAME RESERVE

AFRICA

## Ecology Trails: Tracks, signs and spoor



ANY QUESTIONS?

[INFO@GAPAFRICAPROJECTS.COM](mailto:INFO@GAPAFRICAPROJECTS.COM) | +44 (0)207 1937819

INFORMATION PACK 16



# BONAMANZI GAME RESERVE

AFRICA

## Rhino Monitoring – Awareness and Anti-Poaching



ANY QUESTIONS?

[INFO@GAPAFRICAPROJECTS.COM](mailto:INFO@GAPAFRICAPROJECTS.COM) | +44 (0)207 1937819

INFORMATION PACK 17

## Camera Trap – Research and Study

Set out own camera traps

Learn about correct placement, best location etc

Never know what we'll find!



# BONAMANZI GAME RESERVE

AFRICA

## Night Game Drives



ANY QUESTIONS?

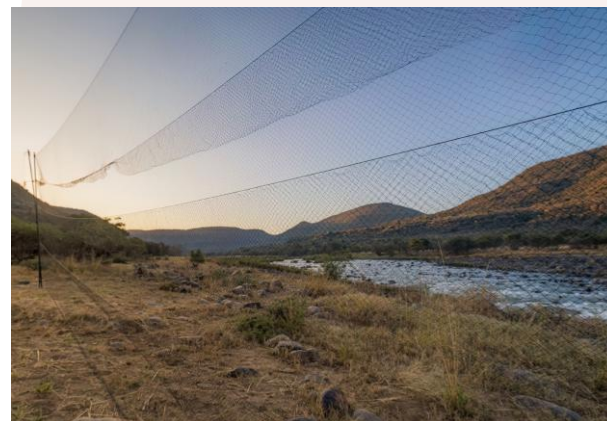
[INFO@GAPAFRICAPROJECTS.COM](mailto:INFO@GAPAFRICAPROJECTS.COM) | +44 (0)207 1937819

INFORMATION PACK 19

# BONAMANZI GAME RESERVE

AFRICA

## Bird Ringing



ANY QUESTIONS?

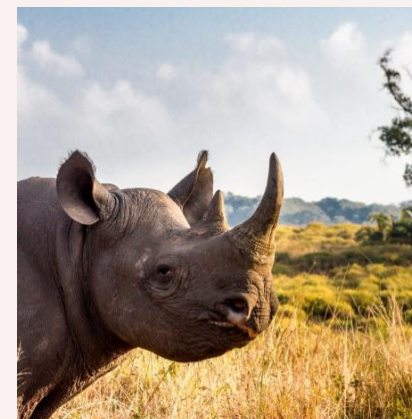
[INFO@GAPAFRICAPROJECTS.COM](mailto:INFO@GAPAFRICAPROJECTS.COM) | +44 (0)207 1937819

INFORMATION PACK 20

## Hluhluwe-Imfolozi Park

Hluhluwe iMfolozi Park - is the oldest proclaimed nature reserve in Africa. It consists of 96,000 ha of wilderness and has the Big 5 as well as cheetah, hyena, African wild dog among many other mammals, reptiles and birds.

Students will have an inciteful game drives in open game viewers.



# BONAMANZI GAME RESERVE

AFRICA

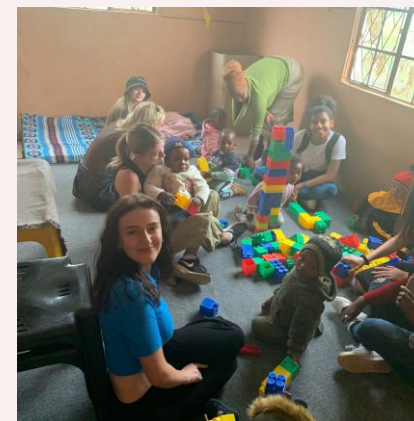
## Community Projects & Zulu Culture

Learn about traditional Zulu culture

Community engagement essential for long-term conservation

Positive impact supporting not-for-profit initiatives

Projects: Move Africa, Project Rhino



# BONAMANZI GAME RESERVE

AFRICA

## Community – GAP Donation Bags



ANY QUESTIONS?

[INFO@GAPAFRICAPROJECTS.COM](mailto:INFO@GAPAFRICAPROJECTS.COM) | +44 (0)207 1937819

INFORMATION PACK 23



**AFRICA**

# 2 nights at St Lucia

A Coastal Adventure



## St Lucia Wetlands (2 nights)

**St. Lucia** is situated on the northern side of the estuary, the largest in Southern Africa and is totally surrounded by the Greater St. Lucia Wetlands Park and World Heritage Site. The area is famous for its wetlands and is a fantastic opportunity to witness Crocodiles and Hippos in their natural environment. Snorkelling at Cape Vidal is tide and current dependent.



# ST LUCIA – COASTAL ADVENTURE

AFRICA

## Your Conservation Programme – St Lucia

Whilst at St Lucia you will get the opportunity to take part in some amazing activities but also time to relax in the beautiful coastal resort of St Lucia.

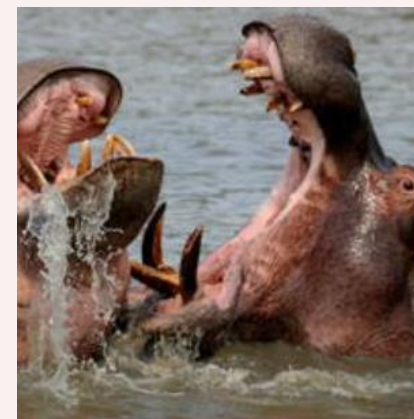
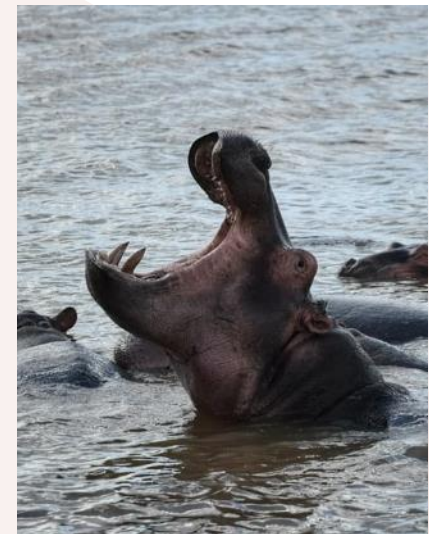
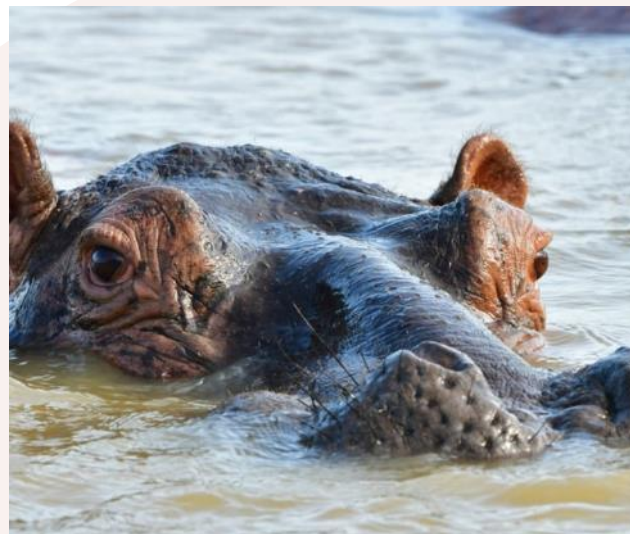
- Hippo and Crocodile tour in the Estuary
- Visit to Cape Vidal Nature Reserve and beach
- Bird walk (over 400 species in prime habitat)
- Whale Watching Tour (Seasonal and additional cost)



# ST LUCIA – COASTAL ADVENTURE

AFRICA

## Estuary Hippo and Crocodile Tour



ANY QUESTIONS?

[INFO@GAPAFRICAPROJECTS.COM](mailto:INFO@GAPAFRICAPROJECTS.COM) | +44 (0)207 1937819

INFORMATION PACK 27

# ST LUCIA – COASTAL ADVENTURE

AFRICA

## Cape Vidal Nature Reserve and Snorkeling



ANY QUESTIONS?

[INFO@GAPAFRICAPROJECTS.COM](mailto:INFO@GAPAFRICAPROJECTS.COM) | +44 (0)207 1937819

INFORMATION PACK 28

# ST LUCIA – COASTAL ADVENTURE

AFRICA

## Bird Tracking and Identification



# ST LUCIA – COASTAL ADVENTURE

AFRICA

**Whale Watching (Additional Cost) Mid June – October**



ANY QUESTIONS?

[INFO@GAPAFRICAPROJECTS.COM](mailto:INFO@GAPAFRICAPROJECTS.COM) | +44 (0)207 1937819

INFORMATION PACK 30



**AFRICA**

# **ACCOMMODATION & LIFESTYLE**

Life in the African Bush

# ACCOMMODATION

AFRICA

## Bundu Camp



ANY QUESTIONS?

[INFO@GAPAFRICAPROJECTS.COM](mailto:INFO@GAPAFRICAPROJECTS.COM) | +44 (0)207 1937819

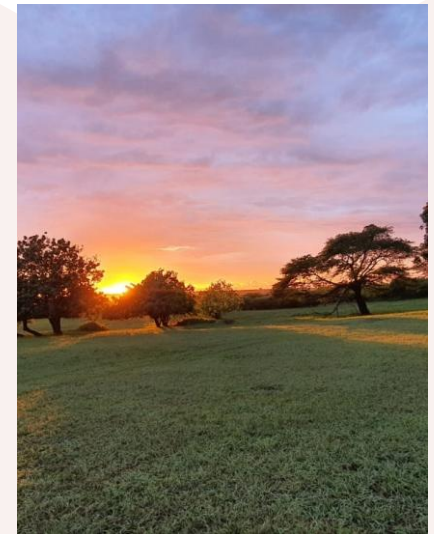
INFORMATION PACK 32



# ACCOMMODATION

AFRICA

## Bundu Camp



ANY QUESTIONS?

INFO@GAPAFRICAPROJECTS.COM | +44 (0)207 1937819

INFORMATION PACK 33

# ACCOMMODATION

AFRICA

## St Lucia Coastal Accommodation

Guest House style accommodation is provided during your time in St Lucia. Rooms are shared and have communal ablutions.

The guest house is located in the heart of St Lucia's Main Street and is the ideal location to explore the surrounding areas.



# ACCOMMODATION

AFRICA

## Food at the project

Three meals are provided a day prepared by the kitchen staff.

Breakfasts will consist of toast and cereals; lunch may include pasta, wraps, burgers, stir fry; dinners include meat, fish and vegetables with rice, potatoes or pasta.

On weekends a braai (BBQ) is often organised.

Please advise us of any dietary requirements in advance so we can ensure that you are adequately catered for.





**AFRICA**

# **THE NEXT STEPS TO YOUR FIELD TRIP**

The next steps to the trip of a  
lifetime!

# THE NEXT STEPS

AFRICA



## Project dates & key deadlines

### Confirmed trip dates:

Depart UK: 15/06/2026 Arrive SA: 16/06/2026

Depart SA: 27/06/2026 | Arrive UK: 28/06/2026

### Trip cost:

£2,750.00 Based on a group of 18 (confirmed once flights have been held)

### Key deadlines are:

- Return the online booking form by 25/04/2025
- Deposit payment, £300.00 by 12/05/2025
- 50% instalment payment of £1225.00 to be paid by 23/02/2026
- Balance payment of £ 1225.00 to be paid by 20/04/2026
- Payment plans available
- Two weeks before departure e-Tickets & final documents will be issued

# THE NEXT STEPS

AFRICA

## What is Included?

- Flights from London Heathrow
- Transfers to/from project
- Accommodation
- Three meals per day
- All activities as part of the project
- ATOL protection
- Airport meet/greet
- 24/7 In country support

## NOT Included

- Personal Travel Insurance \*
- Meals on travel days – before arriving & after departing from project
- Any activities not specified as part of the project
- Visa's/travel documents

\* We recommend that you take out personal travel insurance as soon as your booking is confirmed.



# THE NEXT STEPS

AFRICA

## Confirmation Documents

Confirmation documents will be issued and sent directly to you via email.

Please communicate with us with any questions relating to the field trip.



10 Oct 2022  
Ref: 23-KCA-CAC7-01-LT

**Your Booking**  
Travel Advice

**Names and spellings**  
It is crucial that the details are correct on your passport. If there is a mistake this will need to be changed, otherwise you may be refused travel and charged for amendments.

**Passport expiry date**  
Your passport must be valid for at least 30 days beyond the planned return date to your country of origin. It you hold a passport other than a British citizen passport, you should seek more specific travel advice from your embassy.

**Passport Copies**  
It is recommended that you take photographs of your passport documents and keep them in a separate place.

**Travel insurance**  
It is essential that you take out the appropriate travel insurance for your trip. Please remember to take the certificate and copy sending booklet with you when you travel. For our preferred travel insurance please see:

<https://www.airtravel.org.uk/insurance/air-travelers>

Warm regards,  
The GAP Africa Team

**Passengers Travelling**  
Miss Chloe  
Placement(s)  
Zulu Land Conservation Research (06/03/23 - 18/03/23)

**Inclusions**  
Flights, Shared road transfers to and from Project, accommodation for duration, all meals and all project activities.

**Exclusions**  
Insurance, any activities undertaken that are not included as part of the project.

**Your Flight(s)**

05/03/2023	D : 15:00	Manchester (MAN)
BA1399	A : 16:05	London Heathrow (LHR)
05/03/2023	D : 18:20	London Heathrow (LHR)
BA55	A : 07:25 + 1 D	Johannesburg (JNB)
18/03/2023	D : 05:15	Johannesburg (JNB)
BA56	A : 05:30 + 1 D	London Heathrow (LHR)
19/03/2023	D : 09:35	London Heathrow (LHR)
BA1390	A : 10:40	Manchester (MAN)

+44 (0) 207 193 7819  
mark.botfield@gapafriaprojects.com



Registered in England No. 7512489  
VAT: 4420204  
Registered Office: 130 London Street, Ayles, Hampshire, GU24 1JG

**CONFIRMATION INVOICE**

Gap Africa Projects  
PO Box 138  
Chesington  
Surrey  
KT9 9B1  
United Kingdom  
Tel: +44 (0) 20 7193 7819  
Email: info@gapafriaprojects.com

Miss Chloe

UK  
Date: 10/10/2022  
Invoice No: 23-KCA-CAC7-02-M  
Booking Ref: 4413

Projects, Placement, Extra Activities				
Description	Qty	Arrival	Departure	
Zulu Land Conservation Research	1	06/03/2023	18/03/2023	

Flights					
Flight No.	Date	Dept. Time	Arrival Time	Departure Airport	Arrival Airport
BA1399	05/03/2023	15:00	16:05	Manchester (MAN)	London Heathrow (LHR)
BA55	05/03/2023	18:20	07:25 + 1 Day	London Heathrow (LHR)	Johannesburg (JNB)
BA56	18/03/2023	20:15	05:30 + 1 Day	Johannesburg (JNB)	London Heathrow (LHR)
BA1390	19/03/2023	09:35	10:40	London Heathrow (LHR)	Manchester (MAN)

**Miss Chloe Capstick, Gap Africa Projects is licensed under the Air Travel Organiser's (ATOL) Licence 10890. This trip is financially protected by this ATOL Licence and we will also supply an ATOL Certificate. Please visit [www.atol.org.uk](http://www.atol.org.uk) for more information about financial protection and the ATOL Certificate.**

Description	Date	Amount
Total cost of the arrangements as specified above	28/09/2022	£ 2,195.00
Deposit Payment	09/03/2023	£ 1,395.00
<b>Total balance due by</b>	<b>14/11/2022</b>	<b>£ 947.50</b>
<b>Of which is due by</b>		

**Payment Methods**  
Cheques: Payable to GAP AFRICA PROJECTS LTD  
Bank Transfer: Account No: 536029758  
Sort Code: 20-46-73  
Swift: BAIRC022  
IBAN: GB490837BARC20467363629758

For all bank transfers, please use your surname and booking number 4413 as reference. For transfers outside of the UK, please ensure that international transfer charges are covered when making the transaction.

This is an important document. Make sure that you take it with you when you travel.

## ATOL Certificate

**This confirms that your money is protected by the ATOL scheme and that you can get home if your travel company collapses.**

This certificate sets out how the ATOL scheme will protect the people named on it for the parts of their trip listed below.

Who is protected?	Number of passengers: 18
What is protected?	

**You can find more detailed information on your booking, including price, on the confirmation you will receive from Gap Africa Projects Limited**

**Who is protecting your trip?**  
Gap Africa Projects Limited ATOL Number 10890

**Your protection**  
You are protected from when you were given this certificate to the end of your trip.  
If Gap Africa Projects Limited stops trading, the passengers named above will either:

- 1 complete their trip and return to the UK, or
- 2 receive a refund.

Your protection depends on the terms of the ATOL scheme (available at [www.atol.org.uk](http://www.atol.org.uk)).

If Gap Africa Projects Limited stops trading, you must follow the instructions at [www.atol.org.uk](http://www.atol.org.uk) (where there will be details of arrangements to bring people back to the UK, and information on how people can claim their money back) or you can call (+44) 20 7453 6350.

By issuing this ATOL Certificate, under Regulation 17 of the Civil Aviation (Air Travel Organisers' Licensing) Regulations 2012, Gap Africa Projects Ltd confirms that the trip to which it applies is sold in line with the ATOL held by the organiser named above. The ATOL scheme is run by the Civil Aviation Authority and paid for by the Air Travel Trust. To see what that is and what you can expect, together with full information on its terms and conditions go to [www.atol.org.uk](http://www.atol.org.uk). As well as the protection of the ATOL scheme, you have protection under the Package Travel Regulations. For more information see [www.direct.gov.uk](http://www.direct.gov.uk) in the Travel and Transport section.

Unique reference number:	Date of issue:	ATOL Certificate Issuer:	ATOL number:	Package sale
4413	10/10/2022	Gap Africa Projects Ltd	10890	

[Click here to look at all available flights](#)

# BOOKING YOUR ADVENTURE

AFRICA

## Group Web Page

<https://gapafricaprojects.com/26-4695/>



## Booking Form

<https://gapafricaprojects.com/booking-form-26-4695-wac-kwc-warwickshire-college/>



### BOOKING FORM

Your Global Adventure Starts here!

Please use the form below to submit your provisional booking to your selected project. You have the option to pay your initial deposit with the submission of your booking form, or we will contact you for payment once your project placement has been secured.

If you'd like to contact us to ask any initial questions or find out more about what project you'd like to go on and when, you can get also get in touch using our short enquiry form, or by calling +44 (0) 207 193 7819.

(\*NB: Your name should be given as displayed on your passport)

Title \*

Name \*

Date of birth \*

Address \*  
Street Address   
Address Line 2   
City  Country / State / Region   
ZIP / Postal Code  Country

Telephone (Do not enter +44 for UK numbers) \*

Mobile (Do not enter +44 for UK numbers) \*

Email 1 \*

Email 2

(\*NB: Please note that all booking correspondence will be sent via Email!)

Passport no.



## Sustainability & Social, Economic Responsibility

**Local employment from rural communities** – our project partners employ a high percentage of staff from local communities. They advocate training to advance careers in hospitality, wildlife and conservation.

**Low environmental impact camps** – our project bush camps are built with minimal impact on the environment. Resources from the surrounding area are utilised for buildings, water is (where possible) pumped from local river sources and green energy supplies, such as solar are championed.

**Community donations and support** – we encourage all our international study groups to be proactive in donation collections and arrange for excess baggage for said donations to be taken out to South Africa in support of the local communities.

**Move Africa, supporting young females** – 3 in 10 girls in South Africa miss a week of school every month because they cannot afford basic sanitary products. Our project partners work with Move Africa alongside their partner NGOs, to distribute menstrual cups to the local communities and provide education workshops.

**Rhino Art** – Project rhino realises the enormous responsibility the youth have to ensure our wildlife is protected for many generations to come. They ensure they can reach and educate as many kids as possible through Rhino Art, using art workshops to teach about conservation. This initiative is supported by our local project partners.

**Food/crop education** – our project partners encourage food and crop education to rural communities, where cost of living to low income families and distance travelled to obtain basic resources can prove problematic. Projects include community allotments and providing education on best practice for crop rotations, harvest seasons and nutrition.

**Recycling workshops** – Litter, and in particular plastics, is a major issue and threat to the ecosystem in Southern Africa. Rural communities have limited waste removal available and it is therefore a problem escalating at an alarming rate. Recycling workshops are provided through local schools to help educate children on the importance of correctly disposing of litter and recycling plastics.



**GLOBAL** reach. **ADVENTURE** for all. **PROJECTS** to inspire.

Explore our network of Global Adventure Projects:



[GLOBALADVENTUREPROJECTS.COM](http://GLOBALADVENTUREPROJECTS.COM)

