



Bath College Group Presentation

The background is a collage of three images. On the left, two men are crouching in a grassy field, attending to a small animal. In the center, a circular inset shows a sunset over a body of water with a forested hill in the background. On the right, there is a close-up of a kudu antelope's head with its long, spiraling horns.

Waterberg Wildlife & Veterinary Course

AFRICA

GLOBAL reach. **ADVENTURE** for all. **PROJECTS** to inspire.



AFRICA

ABOUT THE WATERBERG

Project overview and
location

ABOUT THE WATERBERG

AFRICA

Your Conservation Field Trip Explained

- A unique conservation experience based in South Africa
- Live in a research camp on a wild African game reserve
- 12 day programme specifically tailored for VN students
- Learn about conservation management
- Project Activities include:
 - Pioneering Conservation Research
 - Conservation Activities
 - Veterinary interventions and activities
- Dedicated vehicles and conservation staff
- All inclusive experience
- The most incredible wildlife experience you will ever have

ABOUT THE PROJECT

AFRICA

What is a Game Reserve?

- A game reserve is a large area of protected land where wild animals can live safely.
- Wildlife is free roaming throughout the reserve allowing them to thrive in their natural habitat.
- Reserves are either Government Owned (National Parks) or Privately Owned/Managed.
- Most reserves will have physical boundaries i.e. electrified fence line.
- Due to physical boundaries, wildlife must be managed due to restraints on population growth, migration and resources.
- Wildlife is protected but also utilised as a tourist attraction (Eco Tourism) which creates funding for conservation efforts and research.



ABOUT THE WATERBERG

AFRICA

Entabeni Safari Conservancy

- 22 000 Hectare Privately Managed Game Reserve
- Forming part of the Waterberg Biosphere (662 059 ha)
- Work alongside the conservation team including:
 - Wildlife Vets
 - Conservation Researchers
 - Ecologists
 - Anti Poaching Unit
- Located in a Malaria free zone
- Proclaimed Protected Conservation Area
- Savannah Eco System
- Student Camp Accommodation

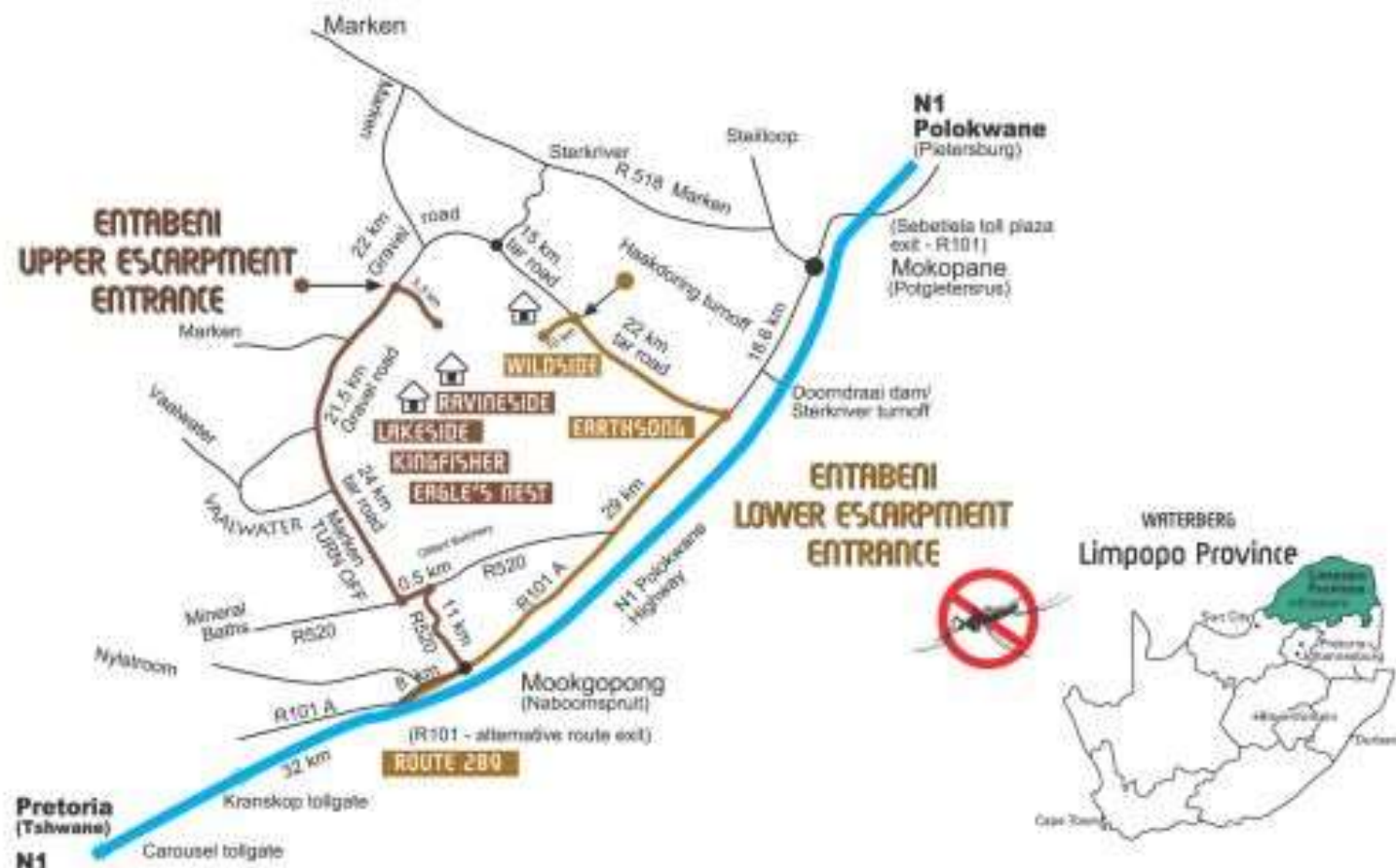


ABOUT ENTABENI

AFRICA

Entabeni Safari Conservancy – Location

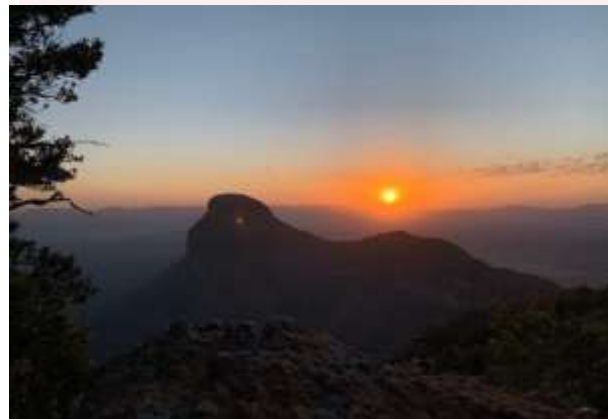
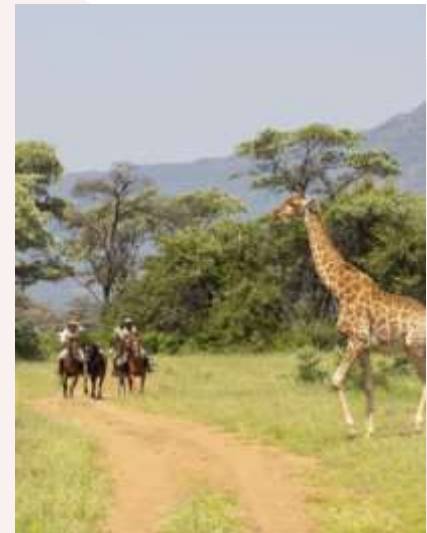
- South Africa a world leader in conservation
- Malaria free Waterberg Plateau



ABOUT THE WATERBERG

AFRICA

Known for its dramatic landscape



ANY QUESTIONS?

INFO@GAPAFRICAPROJECTS.COM | +44 (0)207 1937819

Project Presentation 7

ABOUT THE WATERBERG

AFRICA

Home to the BIG 5



ANY QUESTIONS?

INFO@GAPAFRICAPROJECTS.COM | +44 (0)207 1937819

Project Presentation 8

ABOUT THE WATERBERG

AFRICA

Home to over 60 Species of Mammal



ANY QUESTIONS?

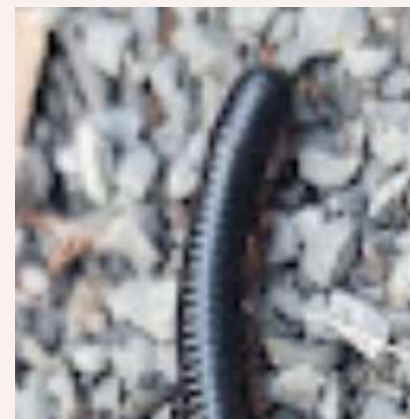
INFO@GAPAFRICAPROJECTS.COM | +44 (0)207 1937819

Project Presentation 9

ABOUT THE WATERBERG

AFRICA

Many Reptile, Insect and Bird Species





AFRICA

ABOUT THE PROJECT

Our conservation work
in more detail

ABOUT THE PROJECT

AFRICA

Course Fundamentals and Structure

- Gain understanding of wildlife research and management that govern veterinary practices on reserve
- A Wildlife Vets role and responsibilities
- Expose participants to behind the scenes wildlife conservation and veterinary work
- Immobilisation and capture techniques used for various wildlife species
- Rhino protection through Veterinary Management
- Conservation Research
- Wildlife management and conservation challenges
- Appreciate the importance of herd health and intensive wildlife breeding
- Gain experience of a variety of veterinary wildlife and conservation working environments
- Vegetation types suitable for wildlife
- Tracks and tracking of Big Five
- Waterberg Wild Dog Project
- Rhino Rehabilitation

ABOUT THE PROJECT

AFRICA

Course Fundamentals and Structure

WEEK 1

Introduction to Entabeni Safari Conservancy and Research Projects

Introduction to Wildlife Veterinary work in the Context of African Wildlife (Dr Zoe Glyphis – Local Wildlife Vet) – 1 Day

Rhino orphanage – assist with orphaned rhino calves

Time spent with research team conducting conservation activities – 4 Days

Week 2

Time spent with research team conducting conservation activities – 3 Days

Further insight into Wildlife Veterinary work (Dr Pierre Bester) – 1 Day

Build up to possible intervention and planning

Specialist Wildlife Vet to conduct intervention with group**

(Dr Pierre Bester) – 1 Day



ABOUT THE PROJECT

AFRICA

Dr Pierre Bester – Wildlife Veterinarian – Rhino Expert

Dr Bester has a mixed animal practice (small and large domestic as well as wild) where the scope of his work includes the immobilisation, treatment, and translocation of African wildlife; specialising in rhino.

He's been involved with the immobilisation and translocation of thousands of rhinos, as well as countless other species.



ANY QUESTIONS?

INFO@GAPAFRICAPROJECTS.COM | +44 (0)207 1937819

Project Presentation 14

ABOUT THE PROJECT

AFRICA

Dr Zoe Glyphis – Wildlife Veterinarian – Predator Specialist

Dr Zoe Glyphis has become one of South Africa's leading predator specialists and is on the forefront with veterinary medicine and veterinary assistance of wild dog, heyna and cheetah conservation all over South Africa.

She is helping and assisting several NGO groups and organizations with their efforts to increase predator ranges and to establish safe and genetically viable populations in new conservation areas.



ANY QUESTIONS?

INFO@GAPAFRICAPROJECTS.COM | +44 (0)207 1937819

Project Presentation 15

ABOUT THE PROJECT

AFRICA

Learning about a Veterinarians role in the field



ANY QUESTIONS?

INFO@GAPAFRICAPROJECTS.COM | +44 (0)207 1937819

Project Presentation 16

ABOUT THE PROJECT

AFRICA

The Rhino Orphanage

The Rhino Orphanage was the first-ever specialised, non-commercial centre dedicated to the rescue, rehabilitation, raising and release of orphaned rhinos back into the wild.

Although new-born rhinos can weigh up to 50kgs, they are essentially “helpless” and require protection so that they may survive and ultimately thrive.



ABOUT THE PROJECT

AFRICA

Introduction of Darting Techniques

Learn the basic principles for darting wildlife. Each student will have the opportunity to use the gas powered dart gun at the range.



ABOUT THE PROJECT

AFRICA

Introduction to Pharmacology



ANY QUESTIONS?

INFO@GAPAFRICAPROJECTS.COM | +44 (0)207 1937819

Project Presentation 19

ABOUT THE PROJECT

AFRICA

Bush Skills – Bush Walks, Tracking Wildlife



ANY QUESTIONS?

INFO@GAPAFRICAPROJECTS.COM | +44 (0)207 1937819

Project Presentation 20

ABOUT THE PROJECT

AFRICA

Monitoring the Entabeni Rhino Population

Behavioural observations, photos and GPS locations are recorded to document where the animals are occurring; keeping tabs on the localities and activities of White and Black Rhino on the reserve.

Importantly also monitor body condition, injuries, mating, calving, behaviour, herd structure etc.



ABOUT THE PROJECT

AFRICA

Research – Habitat and Prey Selection: Predators



ANY QUESTIONS?

INFO@GAPAFRICAPROJECTS.COM | +44 (0)207 1937819

Project Presentation 22

ABOUT THE PROJECT

AFRICA

Research – Elephant Monitoring & Fertility Study



ANY QUESTIONS?

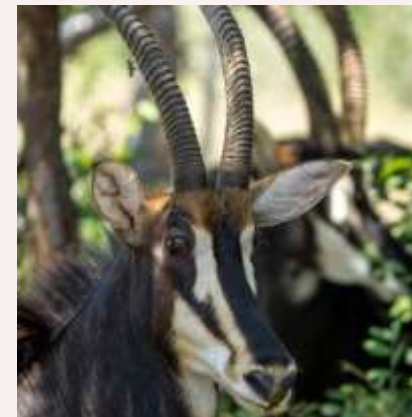
INFO@GAPAFRICAPROJECTS.COM | +44 (0)207 1937819

Project Presentation 23

ABOUT THE PROJECT

AFRICA

Monitoring Herbivore Condition and Health



ANY QUESTIONS?

INFO@GAPAFRICAPROJECTS.COM | +44 (0)207 1937819

Project Presentation 24

ABOUT THE PROJECT

AFRICA

Camera Trap – Research and Study



ANY QUESTIONS?

INFO@GAPAFRICAPROJECTS.COM | +44 (0)207 1937819

Project Presentation 25

ABOUT THE PROJECT

AFRICA

Anti-Poaching Unit



ANY QUESTIONS?

INFO@GAPAFRICAPROJECTS.COM | +44 (0)207 1937819

Project Presentation 26

ABOUT THE PROJECT

AFRICA

Night Game Drives



ANY QUESTIONS?

INFO@GAPAFRICAPROJECTS.COM | +44 (0)207 1937819

Project Presentation 27

ABOUT THE PROJECT

AFRICA

Rhino – Fitting of Prosthetics



ANY QUESTIONS?

INFO@GAPAFRICAPROJECTS.COM | +44 (0)207 1937819

Project Presentation 28

ABOUT THE PROJECT

AFRICA

Rhino – Sinus Infection



ANY QUESTIONS?

INFO@GAPAFRICAPROJECTS.COM | +44 (0)207 1937819

Project Presentation 29

ABOUT THE PROJECT

AFRICA

Lion immobilisation & collaring/removal



ANY QUESTIONS?

INFO@GAPAFRICAPROJECTS.COM | +44 (0)207 1937819

Project Presentation 30

ABOUT THE PROJECT

AFRICA

Cheetah Relocation – Endangered Wildlife Trust (EWT)



ANY QUESTIONS?

INFO@GAPAFRICAPROJECTS.COM | +44 (0)207 1937819

Project Presentation 31

ABOUT THE PROJECT

AFRICA

Necropsies



ANY QUESTIONS?

INFO@GAPAFRICAPROJECTS.COM | +44 (0)207 1937819

Project Presentation 32

ABOUT THE PROJECT

AFRICA

Free-roaming Waterberg Wild Dog – Talks



ANY QUESTIONS?

INFO@GAPAFRICAPROJECTS.COM | +44 (0)207 1937819

Project Presentation 33

ABOUT THE PROJECT

AFRICA

Possible Lectures & Debate

- Drugs used in wildlife medicine
- Calculating doses in wildlife
- Logistics of wildlife transportation: customised vehicles, crates and equipment
- The Game Trade-Auction and value of livestock
- Game capture systems
- Darting wildlife
- Boma management and rehabilitation
- Orphaned Rhino rehabilitation
- Parasite control
- Managing game reserves and Land Capacity Model
- Species control – predator pits
- State veterinary disease control in practice
- Documentation required: Red Cross Permits





AFRICA

ACCOMMODATION & LIFESTYLE

Living in the African Bush

ACCOMMODATION & LIFESTYLE

AFRICA

Entabeni Villas

Each Villa offers a spacious and open plan layout, with a lounge and dining area as well as a fully equipped kitchen for self-catering getaways. The luxurious African-inspired interior with its natural palette contributes to the luxury that accompanies the relaxing atmosphere at every Legend Safari Villa.

The Villas have a variety of 3, 4, 5, and 6 Bedroom Self-Catering Units.



Meals

All meals are included, and there is a communal kitchen where food will be prepared in groups.

Some days lunch will be had back at camp, other days lunch will be brought into the field to be had as a picnic.

Evenings are spent at leisure around the campfire.

Only Sunday will be an off day to 'chill' in camp or do extra activities.



ACCOMMODATION & LIFESTYLE

AFRICA

Sunday additional activities (own cost)

Horseback Safari Max 4 people at a time

- Horse Riding (1 hour) R590 pp
- Horse Riding (2 Hours) R1090 pp
- **Sunset Cruise** (Includes finger foods & softdrinks) R690 pp
- Cultural Foundation Drumming session R600 pp
- **Guided Bush Walk** (Non Predator) R300 pp
- **Guided Bush Walk** (Predator) R800 pp

- **Bicycle Rental** – 4 hours at Clubhouse R120 pp
- **Spa massages** between R320 – R830 pp
- **Marimba Band and Pedi Dancers** (Group activity enquire for rates)
- **Game Drive and Boat Cruise** with Lunch at Lakeside R890 pp
- **Picnic Lunch** at Yellow-wood Gorge Mountain Pool R890 pp
- **Stargazing** R790 pp

Note: all activities and costs are subject to change



ACCOMMODATION & LIFESTYLE

AFRICA

Sunday additional activities (own cost)



ANY QUESTIONS?

INFO@GAPAFRICAPROJECTS.COM | +44 (0)207 1937819

Project Presentation 39

ACCOMMODATION & LIFESTYLE

AFRICA

Life on Reserve



ANY QUESTIONS?

INFO@GAPAFRICAPROJECTS.COM | +44 (0)207 1937819

Project Presentation 40

WHY SHOULD I TRAVEL?

AFRICA

What do previous travellers say about the Waterberg Wildlife & Veterinary Course?



"The post-mortem **helped** massively with anatomy and physiology **revision!**"



"It is difficult to pinpoint one thing but probably the most **memorable** aspect was being involved in a rhino **sedation** in which the SVNs were **actively** involved!"



"I am more **humbled**. I know what I want to do moving forward career-wise"

Reference: GAP Africa Projects Post Project Trip Questionnaire 23/24

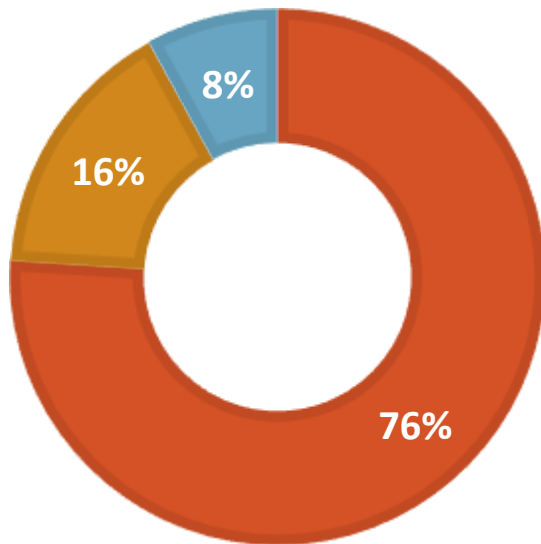
WHY SHOULD I TRAVEL?

AFRICA

Personal Development

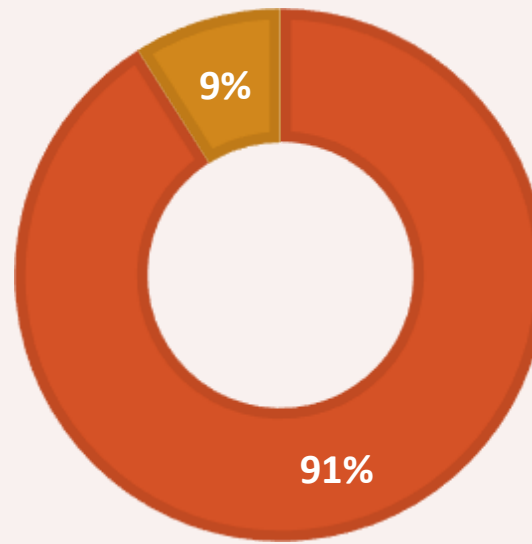
MENTAL HEALTH IMPROVEMENT

■ Yes ■ No ■ NA



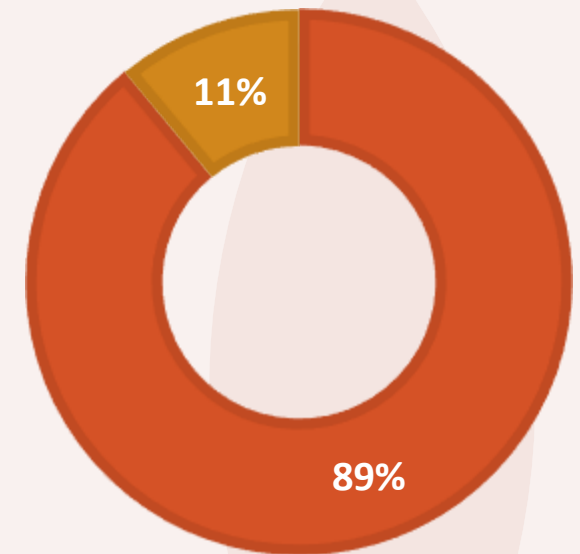
CONFIDENCE IMPROVEMENT

■ Yes ■ No



RESILIENCE IMPROVEMENT

■ Yes ■ No



Reference: GAP Africa Projects Post Project Trip Questionnaire 23/24



AFRICA

BOOKING YOUR ADVENTURE

The next steps to the trip of a
lifetime!

BOOKING YOUR ADVENTURE

AFRICA

Dates & key deadlines

Proposed trip dates are:

Depart UK: 5th July | Arrive SA: 6th July 2026

Depart SA: 18th July | Arrive UK: 19th July 2026

Trip cost:

£2,695 – £2,795 est. (based on a group of 16)

Key deadlines are:

- Return of booking forms or online application by: 17/01/2025
- Deposit of £300 to confirm placement within two weeks of provisional booking to confirm place TBC
- Instalment payment of 50% due 16 weeks before departure 03/05/2026
- Balance payment due 8 weeks before departure 15/03/2026
- E tickets will be issued 2 weeks prior to departure and emailed to students

BOOKING YOUR ADVENTURE

AFRICA

What is Included?

- Flights
- Transfers to/from project
- Accommodation
- Three meals per day (self prepared)
- All activities as part of the project
- ATOL protection
- Airport meet/greet
- 24/7 In country support

NOT Included

- Personal Travel Insurance *
- Meals on travel days – before arriving & after departing from project
- Any activities not specified as part of the project
- Visa's/travel documents

* We recommend that you take out personal travel insurance as soon as your booking is confirmed.



AFRICA

Please communicate with us with any questions relating to the field trip



BOOKING YOUR ADVENTURE

AFRICA

Booking Form

A screenshot of the 'Gap Africa Projects' booking form. The header features a banner with two cheetahs and the text 'GAP AFRICA PROJECTS'. Below the banner, the title 'BOOKING FORM' is centered. The form includes several fields: 'Title *', 'Name *' (split into three input boxes), 'Date of birth *' (with dropdown menus for day, month, and year), 'Passport no.' (a single input box), 'Passport issue Date' (with dropdown menus for day, month, and year), 'Passport Expiry Date' (with dropdown menus for day, month, and year), 'Nationality of Passport' (a single input box), 'Next of Kin Details' (with 'Full name *' and 'Relationship *' fields), 'Contact Telephone (Do not enter +44 for UK numbers)' (a single input box), and 'Please provide details of any dietary requirements *' (a single input box). The form is set against a light background with a subtle pattern.

<https://gapafricaprojects.com/booking-form-26-4678-bna-esc-bath-college/>

Sustainability & Social, Economic Responsibility

Local employment from rural communities – our project partners employ a high percentage of staff from local communities. They advocate training to advance careers in hospitality, wildlife and conservation.

Low environmental impact camps – our project bush camps are built with minimal impact on the environment. Resources from the surrounding area are utilised for buildings, water is (where possible) pumped from local river sources and green energy supplies, such as solar are championed.

Community donations and support – we encourage all our international study groups to be proactive in donation collections and arrange for excess baggage for said donations to be taken out to South Africa in support of the local communities.

Move Africa, supporting young females – 3 in 10 girls in South Africa miss a week of school every month because they cannot afford basic sanitary products. Our project partners work with Move Africa alongside their partner NGOs, to distribute menstrual cups to the local communities and provide education workshops.

Rhino Art – Project rhino realises the enormous responsibility the youth have to ensure our wildlife is protected for many generations to come. They ensure they can reach and educate as many kids as possible through Rhino Art, using art workshops to teach about conservation. This initiative is supported by our local project partners.

Food/crop education – our project partners encourage food and crop education to rural communities, where cost of living to low income families and distance travelled to obtain basic resources can prove problematic. Projects include community allotments and providing education on best practice for crop rotations, harvest seasons and nutrition.

Recycling workshops – Litter, and in particular plastics, is a major issue and threat to the ecosystem in Southern Africa. Rural communities have limited waste removal available and it is therefore a problem escalating at an alarming rate. Recycling workshops are provided through local schools to help educate children on the importance of correctly disposing of litter and recycling plastics.



GLOBAL reach. **ADVENTURE** for all. **PROJECTS** to inspire.

Explore our network of Global Adventure Projects:



GLOBALADVENTUREPROJECTS.COM

