



# ARU Writtle Group Presentation

The background of the slide is a collage of three images. On the left, two people are crouching in a grassy field, working on a small animal. In the center, a circular inset shows a sunset over a body of water with trees in the background. On the right, a close-up of a kudu antelope's head with long, spiraling horns is shown.

## Waterberg Conservation Project

**AFRICA**

**GLOBAL** reach. **ADVENTURE** for all. **PROJECTS** to inspire.





**AFRICA**

# ABOUT THE WATERBERG

Project overview and  
location

# ABOUT THE WATERBERG

AFRICA

## Your Conservation Field Trip Explained

- **A unique conservation experience based in South Africa**
- **Live in a research camp on 2 wild African game reserve**
- **12 day programme specifically tailored**
- **Learn about conservation management**
- **Project Activities include:**
  - Pioneering Conservation Research
  - Conservation Activities
  - Possible Veterinary intervention
- **Dedicated vehicles and conservation staff**
- **All inclusive experience**
- **The most incredible wildlife experience you will ever have**



# ABOUT THE Waterberg

AFRICA

## Waterberg Conservation Project

Our academic team and qualified rangers at the Waterberg Conservation Project offer a bespoke course to each institution dependent on their own personal objectives and learning needs.

We set out the basis of the trip, comprising of a 12-day academic module split between the two conservation reserves.

This is not a Safari Holiday!

A full day will be planned but will vary from day to day depending on the days task and research goals.

**The project split and duration are as follows:**

### 12 Day Itinerary

**Days 1 – 7**  
Entabeni Safari Conservancy

**Days 7 – 12**  
Welgevonden Game Reserve

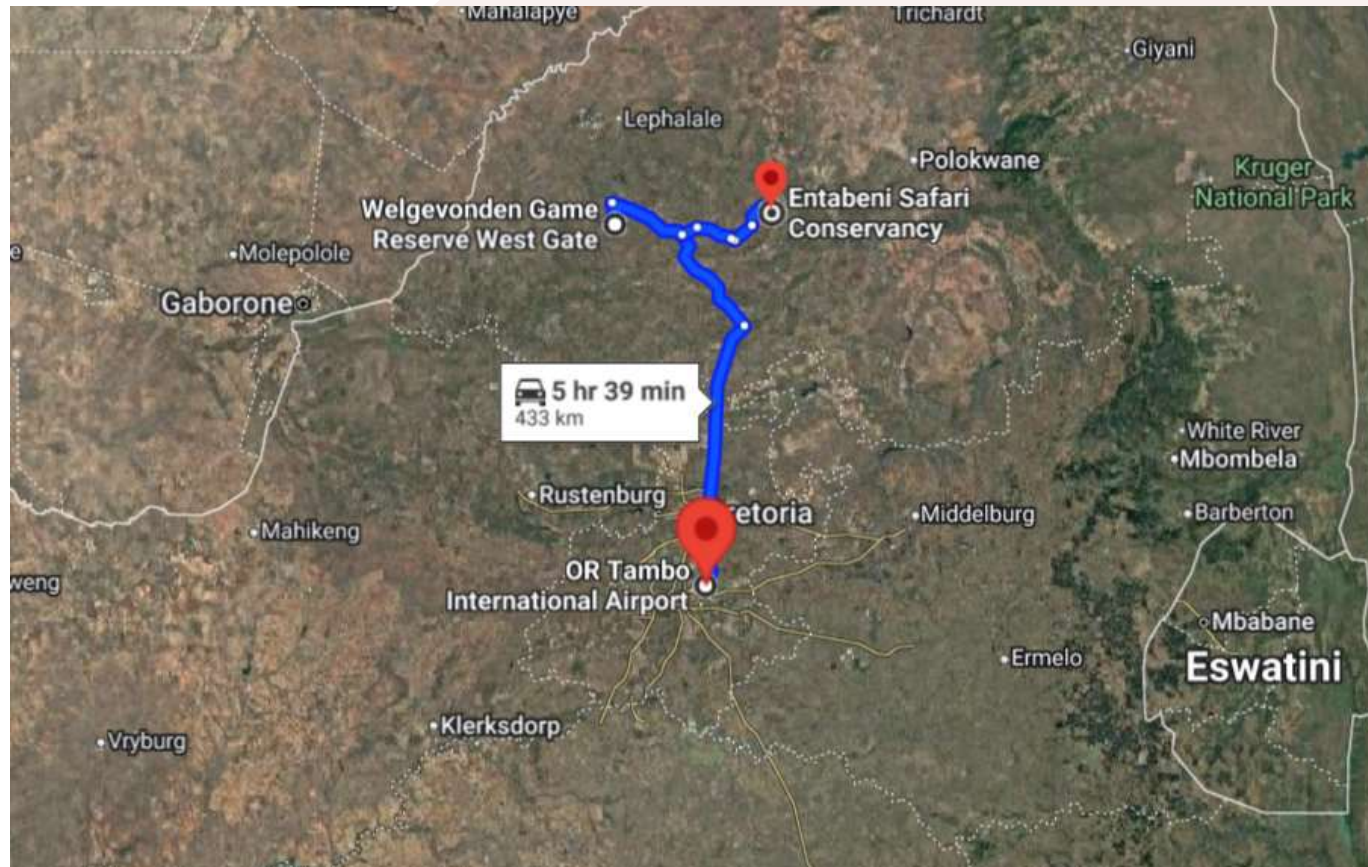


# ABOUT WELGEVONDEN

AFRICA

## Welgevonden Game Reserve – Location

- South Africa a world leader in conservation
- Malaria free Waterberg





# ABOUT THE WATERBERG

**TRUEWILDERNESS**

AFRICA



ANY QUESTIONS?

[INFO@GAPAFRICAPROJECTS.COM](mailto:INFO@GAPAFRICAPROJECTS.COM) | +44 (0)207 1937819

Project Presentation 6



# ABOUT THE WATERBERG

AFRICA

*TRUE WILDERNESS*



ANY QUESTIONS?

[INFO@GAPAFRICAPROJECTS.COM](mailto:INFO@GAPAFRICAPROJECTS.COM) | +44 (0)207 1937819

Project Presentation 7



# ABOUT THE PROJECT

AFRICA

## What is a Game Reserve?

- A game reserve is a large area of protected land where wild animals can live safely.
- Wildlife is free roaming throughout the reserve allowing them to thrive in their natural habitat.
- Reserves are either Government Owned (National Parks) or Privately Owned/Managed.
- Most reserves will have physical boundaries i.e. electrified fence line.
- Due to physical boundaries, wildlife must be managed due to restraints on population growth, migration and resources.
- Wildlife is protected but also utilised as a tourist attraction (Eco Tourism) which creates funding for conservation efforts and research.





# ABOUT WELGEVONDEN

AFRICA

## Home to the BIG 5



ANY QUESTIONS?

[INFO@GAPAFRICAPROJECTS.COM](mailto:INFO@GAPAFRICAPROJECTS.COM) | +44 (0)207 1937819

Project Presentation 9



# ABOUT WELGVONDEN

AFRICA

Home to over 60 Species of Mammal



ANY QUESTIONS?

[INFO@GAPAFRICAPROJECTS.COM](mailto:INFO@GAPAFRICAPROJECTS.COM) | +44 (0)207 1937819

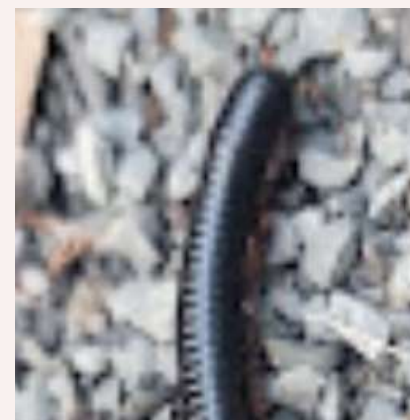
Project Presentation 10



# ABOUT THE PROJECT

AFRICA

**Many Reptile, Insect and Bird Species**



ANY QUESTIONS?

[INFO@GAPAFRICAPROJECTS.COM](mailto:INFO@GAPAFRICAPROJECTS.COM) | +44 (0)207 1937819

Project Presentation 11





**AFRICA**

# ENTABENI SAFARI CONSERVANCY

Our conservation work  
in more detail



# ABOUT THE WATERBERG

AFRICA

## Entabeni Safari Conservancy

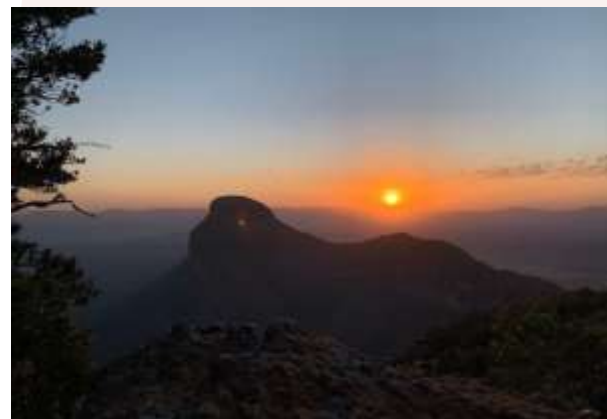
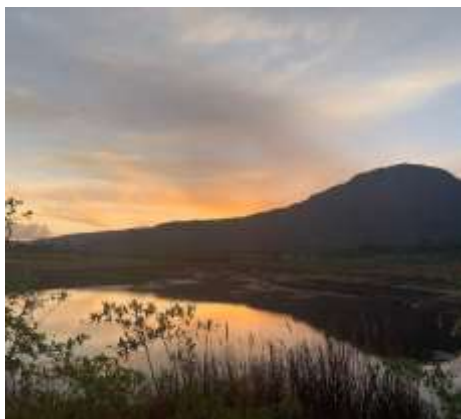
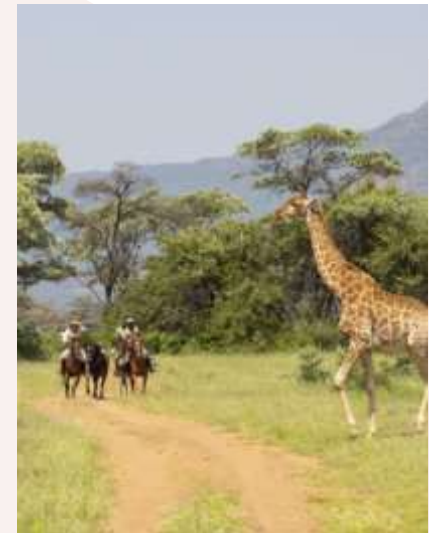
- 22 000 Hectare Privately Managed Game Reserve
- Forming part of the Waterberg Biosphere (662 059 ha)
- Work alongside the conservation team including:
  - Wildlife Vets
  - Conservation Researchers
  - Ecologists
  - Anti Poaching Unit
- Located in a Malaria free zone
- Proclaimed Protected Conservation Area
- Savannah Eco System
- Student Camp Accommodation



# ABOUT THE WATERBERG

AFRICA

**Known for its dramatic landscape**



ANY QUESTIONS?

[INFO@GAPAFRICAPROJECTS.COM](mailto:INFO@GAPAFRICAPROJECTS.COM) | +44 (0)207 1937819

Project Presentation 14



# ABOUT THE PROJECT

AFRICA

## The Rhino Orphanage

The Rhino Orphanage was the first-ever specialised, non-commercial centre dedicated to the rescue, rehabilitation, raising and release of orphaned rhinos back into the wild.

Although new-born rhinos can weigh up to 50kgs, they are essentially “helpless” and require protection so that they may survive and ultimately thrive.





# ABOUT THE PROJECT

AFRICA

## Bush Skills – Bush Walks, Tracking Wildlife



ANY QUESTIONS?

[INFO@GAPAFRICAPROJECTS.COM](mailto:INFO@GAPAFRICAPROJECTS.COM) | +44 (0)207 1937819

Project Presentation 16



# ABOUT THE PROJECT

AFRICA

## Research – Habitat and Prey Selection: Predators



ANY QUESTIONS?

[INFO@GAPAFRICAPROJECTS.COM](mailto:INFO@GAPAFRICAPROJECTS.COM) | +44 (0)207 1937819

Project Presentation 17



# ABOUT THE PROJECT

AFRICA

## Camera Trap – Research and Study



ANY QUESTIONS?

[INFO@GAPAFRICAPROJECTS.COM](mailto:INFO@GAPAFRICAPROJECTS.COM) | +44 (0)207 1937819

Project Presentation 18



# ABOUT THE PROJECT

AFRICA

## Anti-Poaching Unit



ANY QUESTIONS?

INFO@GAPAFRICAPROJECTS.COM | +44 (0)207 1937819

Project Presentation 19



# ACCOMMODATION & LIFESTYLE

AFRICA

## Sunday at Entabeni additional activities (own cost)

- Horse Riding (1 hour) R590 pp
- Horse Riding (2 Hours) R1090 pp
- Sunset Cruise (Includes finger foods & softdrinks) R690 pp
- Cultural Foundation Drumming session R600 pp
- Guided Bush Walk (Non Predator) R300 pp
- Guided Bush Walk (Predator) R800 pp
- Bicycle Rental - 4 hours at Clubhouse R120 pp
- Spa massages between R320 – R830 pp
- Marimba Band and Pedi Dancers (Group activity enquire for rates)
- Game Drive and Boat Cruise with Lunch at Lakeside R890 pp
- Picnic Lunch at Yellow-wood Gorge Mountain Pool R890 pp







**AFRICA**

# WELGEVONDEN GAME RESERVE

Our conservation work  
in more detail

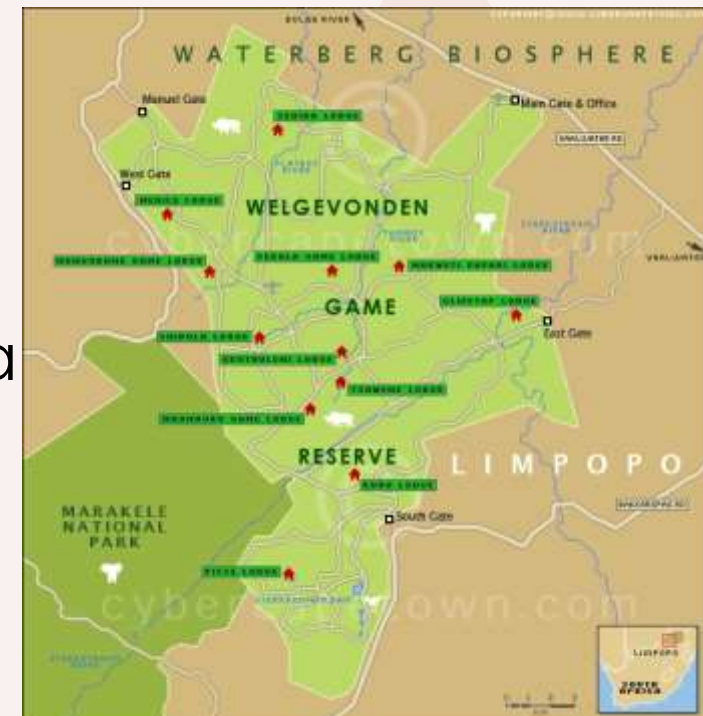


# ABOUT WELGEVONDEN

AFRICA

## Welgevonden Game Reserve

- 36,000 Hectare Privately Managed Game Reserve
- Forming part of the Waterberg Biosphere
- Work alongside the conservation team including:
  - Wildlife Vets
  - Conservation Researchers
  - Ecologists
  - Anti Poaching Unit
- Located in a Malaria free zone
- Proclaimed Protected Conservation Area
- Savannah Eco System
- Research Camp Accommodation





# ABOUT THE PROJECT

AFRICA

## Bush Skills – Bush Walks, Tracking Wildlife



ANY QUESTIONS?

[INFO@GAPAFRICAPROJECTS.COM](mailto:INFO@GAPAFRICAPROJECTS.COM) | +44 (0)207 1937819

Project Presentation 23



# ABOUT THE PROJECT

AFRICA

## Monitoring the Welgevonden Rhino Population

Behavioural observations, body condition, herd structure, photos and GPS locations are recorded to document where the animals are occurring; keeping tabs on the localities and activities of Black and White Rhino on Welgevonden.





# ABOUT THE PROJECT

AFRICA

## Research – Elephant Monitoring



ANY QUESTIONS?

[INFO@GAPAFRICAPROJECTS.COM](mailto:INFO@GAPAFRICAPROJECTS.COM) | +44 (0)207 1937819

Project Presentation 25



# ABOUT THE PROJECT

AFRICA

## Monitoring Herbivore Condition and Health



ANY QUESTIONS?

[INFO@GAPAFRICAPROJECTS.COM](mailto:INFO@GAPAFRICAPROJECTS.COM) | +44 (0)207 1937819

Project Presentation 26



# ABOUT THE PROJECT

AFRICA

## Free-roaming Waterberg Wild Dog – Talks



ANY QUESTIONS?

[INFO@GAPAFRICAPROJECTS.COM](mailto:INFO@GAPAFRICAPROJECTS.COM) | +44 (0)207 1937819

Project Presentation 27



# ABOUT THE PROJECT

AFRICA

## Rhino – DNA Collection, ID and Ear Notching (Rhodis) or injuries



ANY QUESTIONS?

[INFO@GAPAFRICAPROJECTS.COM](mailto:INFO@GAPAFRICAPROJECTS.COM) | +44 (0)207 1937819

Project Presentation 28



# ABOUT THE PROJECT

AFRICA

## Cheetah Relocation – Endangered Wildlife Trust (EWT)



ANY QUESTIONS?

[INFO@GAPAFRICAPROJECTS.COM](mailto:INFO@GAPAFRICAPROJECTS.COM) | +44 (0)207 1937819

Project Presentation 29





**AFRICA**

# ACCOMMODATION & LIFESTYLE

Living in the African Bush



# ACCOMMODATION & LIFESTYLE

AFRICA

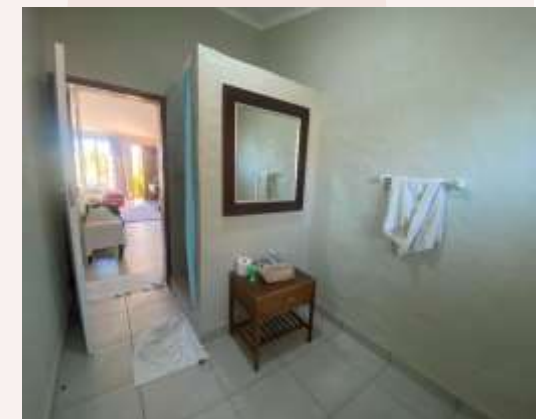
## Entabeni Student Camp (Ravenside)

The student camp is in the middle of the reserve and consists of modern shared accommodation units.

The one-bedroom units have a lounge/study area 2/3 students per bedroom unit.

Communal washing machine for students to do their laundry, as well as an outdoor communal living space for relaxation.

Two sets of linen and towels are provided per student for the entire period of stay.





## Meals

All meals are included, and there is a communal kitchen where food will be prepared in groups.

Some days lunch will be had back at camp, other days lunch will be brought into the field to be had as a picnic.

Evenings are spent at leisure around the campfire.

Only Sunday will be an off day to 'chill' in camp or do extra activities.





# ACCOMMODATION & LIFESTYLE

AFRICA

## Welgevonden Accommodation

The student centre and camp is based on the reserve and boasts ten tents that sleep two to four people per tent in single beds, each tent also has lighting and electricity supply. There are communal hot and cold showers and regular flushing toilets. There are communal facilities including a lecture room, canteen, lounge, entertainment area and storage fridge.





## Welgevonden

All meals are provided in the communal dining room, there is an outside area for dining as well.

Three meals are provided daily on a self cook basis, prepared communally by the group. Students will take part in communal cooking and keeping the kitchen tidy.

Meals will either be served at the facility or in the field 'picnic' style, this depends on activities either planned or unscheduled.

The research team often work 6 days a week so time off is often limited to Sundays only.

Most evenings are spent at leisure around the camp.

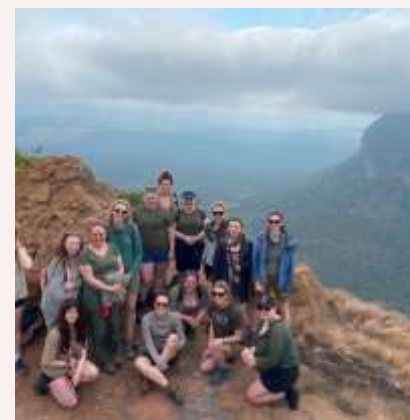




# ACCOMMODATION & LIFESTYLE

AFRICA

## Life on Reserve



ANY QUESTIONS?

[INFO@GAPAFRICAPROJECTS.COM](mailto:INFO@GAPAFRICAPROJECTS.COM) | +44 (0)207 1937819

Project Presentation 35



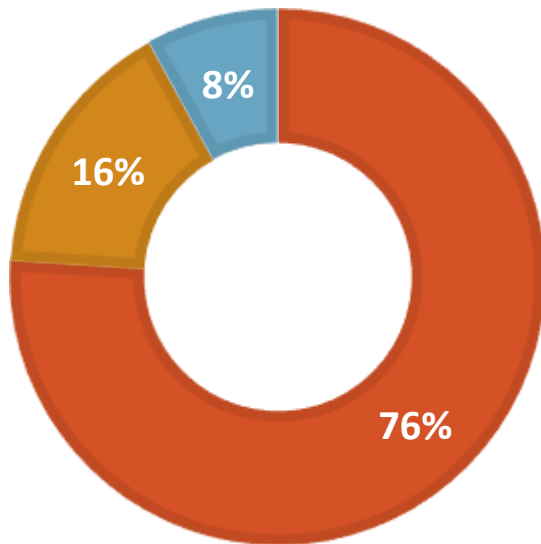
# WHY SHOULD I TRAVEL?

AFRICA

## Personal Development

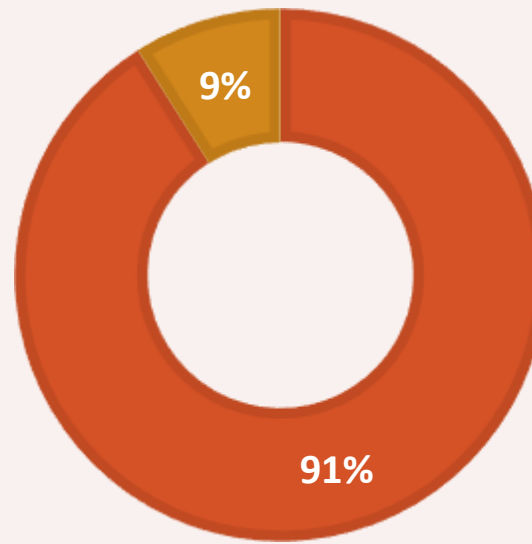
### MENTAL HEALTH IMPROVEMENT

■ Yes ■ No ■ NA



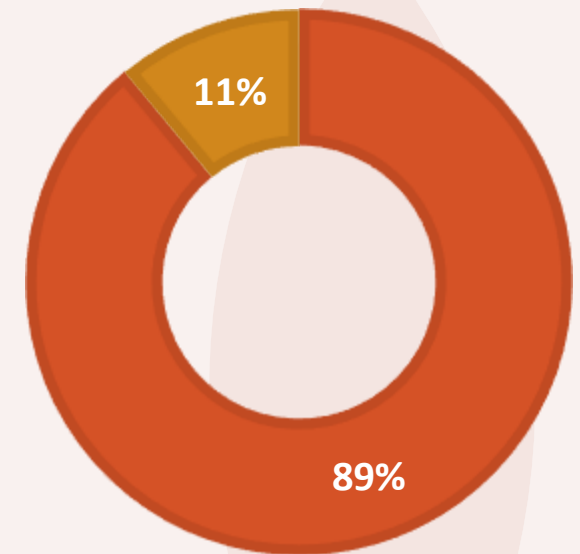
### CONFIDENCE IMPROVEMENT

■ Yes ■ No



### RESILIENCE IMPROVEMENT

■ Yes ■ No



Reference: GAP Africa Projects Post Project Trip Questionnaire 23/24





**AFRICA**

# BOOKING YOUR ADVENTURE

The next steps to the trip of a  
lifetime!



# BOOKING YOUR ADVENTURE

AFRICA

## Dates & key deadlines

### Proposed trip dates are:

**Depart UK: 3rd August | Arrive SA: 4th August 2025**

**Depart SA: 16th August | Arrive UK: 17th August 2025**

### Trip cost:

**£2,495 – £2,695 est. (based on a group of 14)**

### Key deadlines are:

- Return of booking forms or online application by: 14/10/2024
- Deposit of £300 to confirm placement within two weeks of provisional booking to confirm place
- Instalment payment of 50% due 16 weeks before departure
- Balance payment due 8 weeks before departure
- E tickets will be issued 2 weeks prior to departure and emailed to students



# BOOKING YOUR ADVENTURE

AFRICA

## What is Included?

- Flights
- Transfers to/from project
- Accommodation
- Three meals per day (self prepared)
- All activities as part of the project
- ATOL protection
- Airport meet/greet
- 24/7 In country support

## NOT Included

- Personal Travel Insurance \*
- Meals on travel days – before arriving & after departing from project
- Any activities not specified as part of the project
- Visa's/travel documents

\* We recommend that you take out personal travel insurance as soon as your booking is confirmed.





# BOOKING YOUR ADVENTURE

AFRICA

## Booking Form

A screenshot of the GAPAfrica Projects website's booking form. The header features a banner with two cheetahs and the text 'GAP AFRICA PROJECTS'. Below the banner, the title 'BOOKING FORM' is centered. The form itself contains several fields: 'Title \*', 'Name \*' (split into three input boxes), 'Date of birth \*' (with dropdowns for day, month, and year), 'Passport no.', 'Passport issue Date' (with dropdowns for day, month, and year), 'Passport Expiry Date' (with dropdowns for day, month, and year), 'Nationality of Passport', 'Next of Kin Details' (including 'Full name \*' and 'Relationship \*'), 'Contact Telephone (Do not enter +44 for UK numbers) \*', and a final field for 'Please provide details of any dietary requirements \*'. The website's navigation menu and social media icons are visible at the top.

[gapafricaprojects.com/booking-form-25-wrc-4650-wriddle-college/](https://gapafricaprojects.com/booking-form-25-wrc-4650-wriddle-college/)



## Sustainability & Social, Economic Responsibility

**Local employment from rural communities** – our project partners employ a high percentage of staff from local communities. They advocate training to advance careers in hospitality, wildlife and conservation.

**Low environmental impact camps** – our project bush camps are built with minimal impact on the environment. Resources from the surrounding area are utilised for buildings, water is (where possible) pumped from local river sources and green energy supplies, such as solar are championed.

**Community donations and support** – we encourage all our international study groups to be proactive in donation collections and arrange for excess baggage for said donations to be taken out to South Africa in support of the local communities.

**Move Africa, supporting young females** – 3 in 10 girls in South Africa miss a week of school every month because they cannot afford basic sanitary products. Our project partners work with Move Africa alongside their partner NGOs, to distribute menstrual cups to the local communities and provide education workshops.

**Rhino Art** – Project rhino realises the enormous responsibility the youth have to ensure our wildlife is protected for many generations to come. They ensure they can reach and educate as many kids as possible through Rhino Art, using art workshops to teach about conservation. This initiative is supported by our local project partners.

**Food/crop education** – our project partners encourage food and crop education to rural communities, where cost of living to low income families and distance travelled to obtain basic resources can prove problematic. Projects include community allotments and providing education on best practice for crop rotations, harvest seasons and nutrition.

**Recycling workshops** – Litter, and in particular plastics, is a major issue and threat to the ecosystem in Southern Africa. Rural communities have limited waste removal available and it is therefore a problem escalating at an alarming rate. Recycling workshops are provided through local schools to help educate children on the importance of correctly disposing of litter and recycling plastics.





**GLOBAL** reach. **ADVENTURE** for all. **PROJECTS** to inspire.

Explore our network of Global Adventure Projects:



**GLOBALADVENTUREPROJECTS.COM**

