



Bishop Burton College Project Presentation

The background of the slide is a composite image. On the left, two young women are tending to a donkey in a dry, rocky landscape. On the right, a dolphin is leaping out of the water in a deep blue sea. In the center, there is a semi-transparent blue circle containing the text 'Canary Islands Welfare & Research Expedition'.

Canary Islands Welfare & Research Expedition

A blue circular logo with a stylized plant or leaf design to its right. The word 'EUROPE' is written in white, bold, sans-serif capital letters inside the circle.

EUROPE

GLOBAL reach. **ADVENTURE** for all. **PROJECTS** to inspire.

ABOUT US:



GAP Africa Projects

- We are a specialised travel company that offers academic trips and volunteering opportunities for groups and individual travellers, in a number of locations worldwide
- We pride ourselves on curating experiences which are personalised to your needs and requirements
- Our first project travelled in 2010
- Full ATOL Bonding
- Working with over 50 Colleges and Universities around the UK
- A small dedicated team in the UK and South Africa.





CANARY ISLAND WELFARE & RESEARCH EXPEDITION OVERVIEW

Overview and location
of the project



ABOUT THE PROJECT



Your Welfare and Research Programme

- A fantastic opportunity to work with the Atlantic Whale and Dolphin Foundation
- Help monitor and conduct research into whales and dolphins found in the waters around the Island of Tenerife
- Working in animal rescue/welfare centres on the island
- Investigate how different centres respect and respond to different behaviour exhibited.
- Visit the zoo's in Tenerife to appraise their strengths and weakness
- Star gazing and hiking in national parks



ABOUT THE PROJECT

Our work in more detail



ABOUT THE PROJECT



Canary Island Welfare & Research





Canary Island

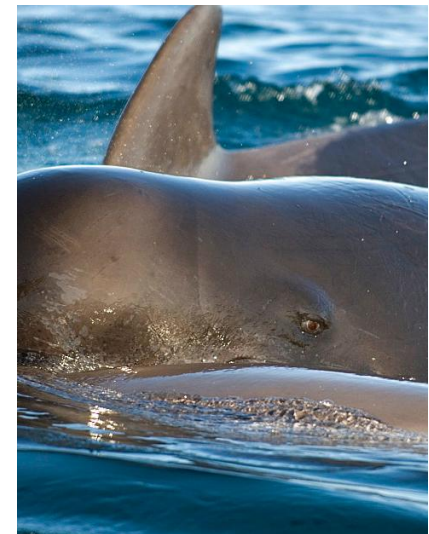
Welfare & Research Expedition



ABOUT THE PROJECT



Atlantic Whale and Dolphin Foundation



ANY QUESTIONS?

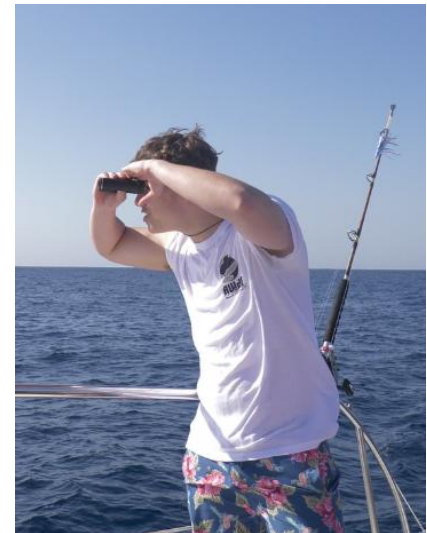
INFO@GAPAFRICAPROJECTS.COM | +44 (0)207 1937819

Presentation 8

ABOUT THE PROJECT



Atlantic Whale and Dolphin Foundation



ANY QUESTIONS?

INFO@GAPAFRICAPROJECTS.COM | +44 (0)207 1937819

Presentation 9

ABOUT THE PROJECT



Animal Rescue Centres



ANY QUESTIONS?

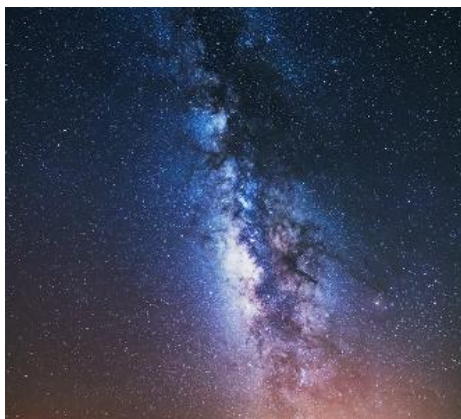
INFO@GAPAFRICAPROJECTS.COM | +44 (0)207 1937819

Presentation 10

ABOUT THE PROJECT



Forest Treks and Stargazing



ANY QUESTIONS?

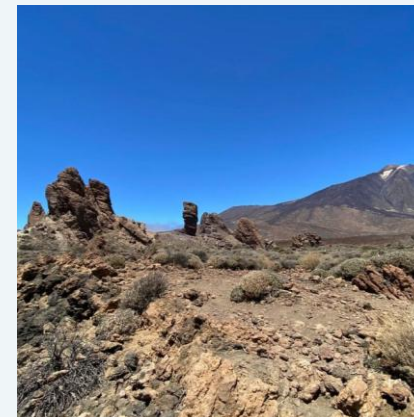
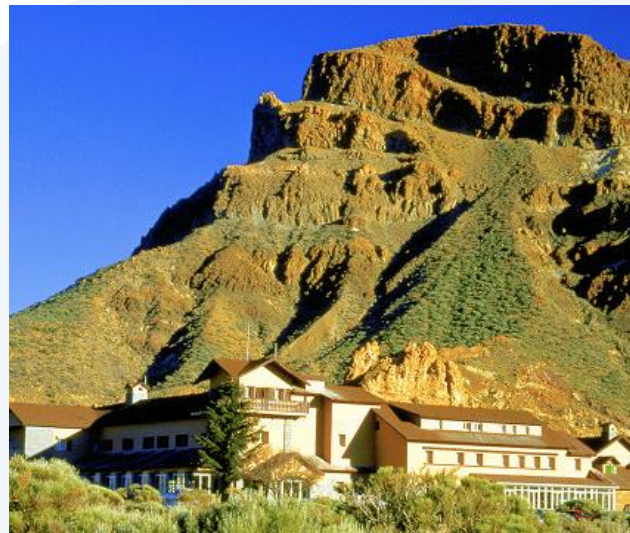
INFO@GAPAFRICAPROJECTS.COM | +44 (0)207 1937819

Presentation 11

ABOUT THE PROJECT



Las Canadas



ANY QUESTIONS?

INFO@GAPAFRICAPROJECTS.COM | +44 (0)207 1937819

Presentation 12

ABOUT THE PROJECT



Itinerary

- ❖ Day 1 – Arrive for your flight to Tenerife. Upon arrival, head to your accommodation and settle in for the evening.
- ❖ Day 2 – Enjoy a full-day introduction to Tenerife, exploring its rich history, vibrant culture, diverse nature, and unique ecosystems.
- ❖ Day 3 – In the morning, head out to sea for whale and dolphin observation, collecting valuable data. After lunch, spend the afternoon volunteering at a local animal rescue centre.
- ❖ Day 4 – Begin the day working at the animal rescue centre. Later, embark on a scenic forest trek, concluding with a magical evening of stargazing under Tenerife's clear skies.
- ❖ Day 5 – Start early with a visit to one of Tenerife's renowned zoos, where you can explore conservation efforts and encounter a variety of animals.
- ❖ Day 6 – Another morning on the boats, continuing your whale and dolphin research. After lunch, return to the animal rescue centre for more hands-on volunteer work.
- ❖ Day 7 – Pack and prepare for your return flight to the UK, taking with your unforgettable memories of your time in Tenerife.





ACCOMMODATION & LIFESTYLE

Life in the Canary Islands



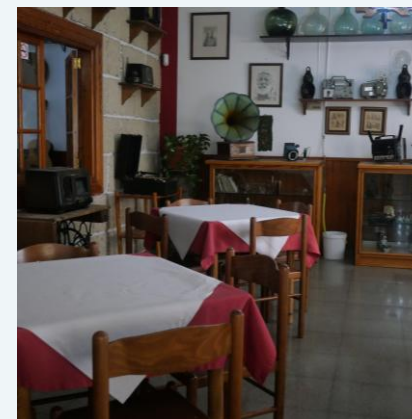
ACCOMMODATION & LIFESTYLE

EUROPE

El Sombrero

Nestled in the picturesque mountain town of Vilaflor, El Sombrero offers a traditional Canarian experience. This charming hotel provides simple yet comfortable accommodation, featuring shared rooms with en-suite bathrooms.

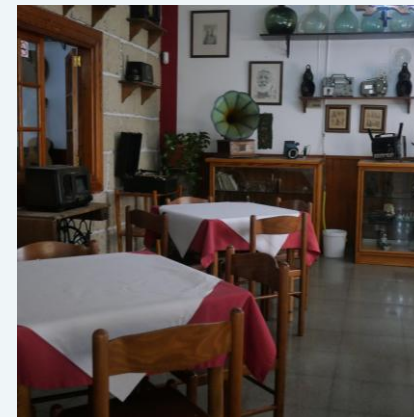
Enjoy a taste of both worlds during your stay, as our delicious meals combine traditional Canarian cuisine with familiar English dishes.



ACCOMMODATION

EUROPE

Accommodation



ANY QUESTIONS?

INFO@GAPAFRICAPROJECTS.COM | +44 (0)207 1937819

Presentation 16



THE NEXT STEPS TO YOUR FIELD TRIP

The next steps to the trip of a
lifetime!



WHAT'S INCLUDED



What is included?

- Flights
- Transfers to/from project
- Accommodation
- Breakfast and Dinner
- All activities as part of the project
- ATOL protection
- Airport meet/greet
- 24/7 In emergency contact

NOT Included

- Personal Travel Insurance *
- Meals on travel days – before arriving & after departing from the project.
- Lunches
- Any activities not specified as part of the project
- Visas/travel documents
- Tips

* We recommend that you take out personal travel insurance as soon as your booking is confirmed.



THE NEXT STEPS



Project dates & key deadlines

Confirmed trip dates:

Depart UK: 18th May 2025 Arrive Tenerife : 18th May 2025

Depart Tenerife: 25th May 2025 | Arrive UK: 25th May 2025

Trip cost:

£1450.00* Based on a group of 18 (confirmed once flights have been held)

Key deadlines are:

- Return the online booking form by 11th October
- Deposit payment, £300.00 by 25th October
- 50% instalment payment of £575.00 to be paid by 26/01/2025
- Balance payment of £575.00 to be paid by 23/03/2025
- Payment plans available
- 04/05/2025 e-Tickets & final documents will be issued

BOOKING YOUR ADVENTURE



Group Web Page

<https://gapafricaprojects.com/25-4642/>



Booking Form

<https://gapafricaprojects.com/booking-form-25-4642-bba-ciw-bishop-burton-college/>



BOOKING FORM

Your Global Adventure Starts here!

Please use the form below to submit your provisional booking to your selected project. You have the option to pay your initial deposit with the submission of your booking form, or we will contact you for payment once your project placement has been secured.

If you'd like to contact us to ask any initial questions or find out more about what project you'd like to go on and when, you can get also get in touch using our short enquiry form, or by calling +44 (0) 207 193 7819.

(NB: Your name should be given as displayed on your passport)

Title *

Mr/Mrs/Miss/Ms/Dr

Name *

First Middle Last

Date of birth *

DD MM YYYY

Address *

Street Address

Address Line 2



GLOBAL reach. **ADVENTURE** for all. **PROJECTS** to inspire.

Explore our network of Global Adventure Projects:



GLOBALADVENTUREPROJECTS.COM

