



PRE DEPARTURE INFORMATION PACK

The background of the slide is a composite image. On the left, two women are tending to a donkey in a dry, rocky landscape. On the right, a dolphin is leaping from the water in a deep blue sea. In the center, there is a semi-transparent blue circle containing the text 'Canary Islands Welfare & Research Expedition'.

Canary Islands Welfare & Research Expedition

A blue circular logo with a stylized leaf or branch design on the right side. The word 'EUROPE' is written in white, bold, sans-serif capital letters inside the circle.

EUROPE

GLOBAL reach. **ADVENTURE** for all. **PROJECTS** to inspire.

TRIP OVERVIEW



Bishop Burton College – Booking Reference 4642

Trip Dates:

18 May – 26 May 2025

Flights:

Flight No	Flight Date	Dept.	Dept. Time	Arr.	Arr. Time
LS0919	18/05/2025	Manchester (MAN)	10:00	Tenerife (TFS) South	14:40
LS0920	25/05/2025	Tenerife (TFS) South	21:30	Manchester (MAN)	02:05 + 1 Day

* Always check your timings on your final documents

Project:

Canary Islands Welfare & Research Expedition

Trip Cost:

£14500.00 per person

£300.00 deposit

£575.00 Instalment due 26/01/2025

£575.00 Balance due 23/03/2025

ARRIVAL

EUROPE

Arriving at Tenerife South Airport

Upon exiting the aircraft on arrival follow the signs to immigration.

After immigration collect your bags at baggage reclaim and proceed through customs.

A representative from Fair Earth Foundation will meet you outside the terminal building.

If you cannot locate the representative, please call

Mickey Day

07717 535610

Fair Earth Foundation



CONTACT DETAILS



Project Addresses:

Accommodation

Hotel El Sombrerito
Calle Sta. Catalina, 15, 38613 Vilaflor,
Santa Cruz de Tenerife

Telephone:

+ 34 922 70 90 52

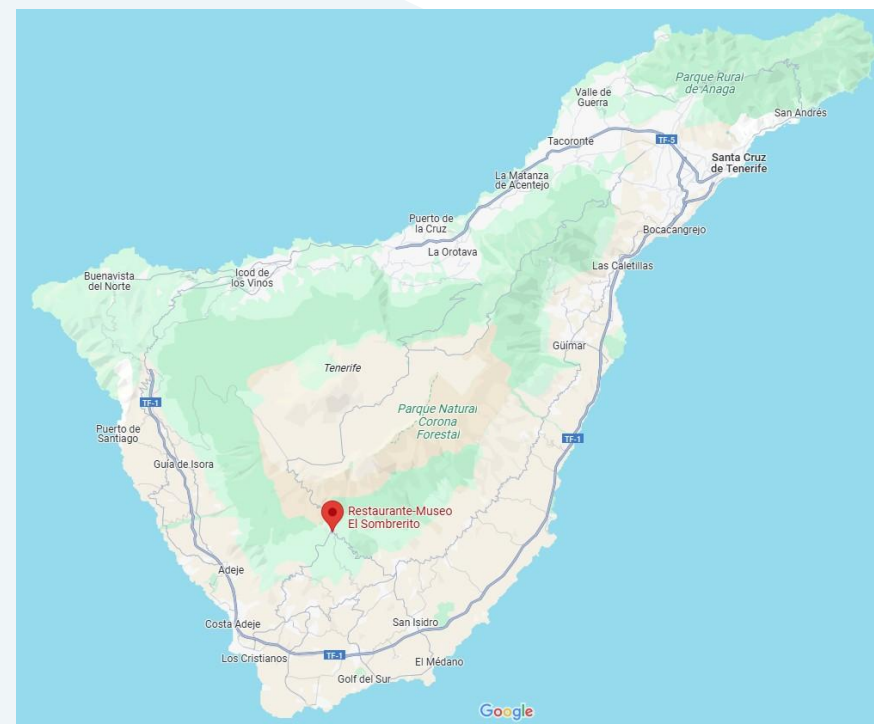
Fair Earth Foundation

Telephone: 07717 535610
Mickey Day (Director of Volunteer and Student
Experience)

Gap Africa Projects

+44 (0) 744 260 1694

24 Hour Emergency Only



USEFUL INFORMATION



Health Risks

Immunisation:

Contact your GP around 8 weeks before your trip to check whether you need any vaccinations or other preventive measures. The following website offers up to date information for travellers to the Canary Islands:

<https://travelhealthpro.org.uk/country/203/canary-islands-spain>

Drinking water:

Bottled water for drinking, the tap water is desalinated and does not have a pleasant taste. Bottled water can be purchased in the local supermarket.

Sun:

Tenerife has a warm sunny climate, you should wear sunscreen and a hat whenever you are out of doors during the day, particularly between 10am and 4pm – regardless of whether there is cloud cover or not. Even if you have a dark complexion, you can still get sunburned if you are from a cooler climate and have not had much exposure to the sun. Sunglasses are also recommended, as the glare of the sun can be very strong.

Stay safe overseas – KBYG

The better prepared you are when you travel abroad the safer you will be. The Foreign, Commonwealth & Development Office offers 'Know before you go' travel advice, including simple precautions you can take before and during your trip.

To find out more, check out their website:

<https://www.gov.uk/browse/abroad/travel-abroad>

USEFUL INFORMATION



Climate

The minimum and maximum annual average temperatures in Tenerife are about 15°C (59°F) in winter and 24°C (75.2°F) in summer.

Tenerife has a generally dry, warm climate with the South of the island being slightly sunnier and experiencing more daylight hours with the North experiencing more rainfall.

Have a look at AccuWeather for more information:

<https://www.accuweather.com/en/ve/tenerife/1790643/weather-forecast/1790643?city=tenerife>

Currency & Credit Cards

The euro is the currency of Spain and the Canary Islands. Credit and debit cards are readily accepted at hotels, restaurants and most supermarkets.

Cards are widely accepted and in terms of travel cards, we have a link with WISE if you use this link, you get no transfer fee up to £500.



<https://wise.prf.hn/l/XZJx9qq>

USEFUL INFORMATION



Phones & Internet

Mobile phone coverage is generally good in Tenerife. Remember that roaming charges may apply.

We have partnered with Holafly, an eSim provider who have offered a 5% discount when you use the code

GAPAFRICAPROJECTS







Benefits of an eSim

- Unlimited Data Plans
- Keep your WhatsApp number
- Immediate Delivery

Holafly



<https://holafly.sjv.io/APK5yR>

 Unlimited data Enjoy unlimited data while traveling to numerous destinations worry-free. Learn more	 Keep using your favorite apps Get that safe ride home, find that great restaurant, and pin the local attractions, all while staying connected with your loved ones.	 Keep your WhatsApp number You can call and message all your contacts on WhatsApp, like you're in the same country. Don't lose touch with family and friends.
 24/7 Customer Support In need of assistance? Our 24/7 chat support is just a message away to keep you connected and help you with everything you need.	 Fast and Reliable Internet Connection Connect to the best networks at your destination and get internet that's both reliable and fast	 Enjoy dual SIMs Enjoy the flexibility of our digital eSIM while keeping the option to use your original SIM as usual whenever you need it.

USEFUL INFORMATION



Insurance

Personal travel insurance is compulsory. Travel insurance does not need to be expensive and there are many good deals available for backpackers etc. Always be sure to check the insurance details to make sure you are covered for Covid 19, theft, loss, illness and injury. Check to see if your medical benefits are paid out as they occur or on your return home.

We have an affiliation with True Traveller Insurance, please see link below for further information:

<https://www.truetraveller.com/backpackers-insurance?tag=4480>

You should select 'Adventure Pack' as this will cover you for the type of activities you will undertake during your trip



Passport Requirements

It can take up to 6 weeks to obtain a passport – remember to start this process in plenty of time.

Your passport must have a 'date of issue' of less than 10 years on the date you arrive.

Passports must be valid for 3 months beyond the planned date of departure

You can check the requirements at the IATA Travel Centre site.

www.iatatravelcentre.com

Visa Requirements

A visa is not required for British passport holders.

You can check the following website for visa information:

<https://www.worldtravelguide.net/guides/europe/spain/canary-islands/>

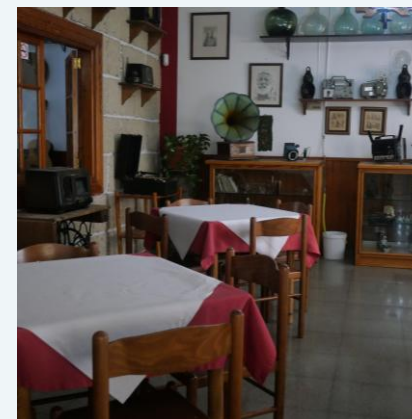
ACCOMMODATION & LIFESTYLE

EUROPE

El Sombrero

Nestled in the picturesque mountain town of Vilaflor, El Sombrero offers a traditional Canarian experience. This charming hotel provides simple yet comfortable accommodation, featuring shared rooms with en-suite bathrooms.

Enjoy a taste of both worlds during your stay, as our delicious meals combine traditional Canarian cuisine with familiar English dishes.



WHAT'S INCLUDED

EUROPE



What is Included?

- Flights
- Transfers to/from project
- Accommodation
- Breakfast and Dinner
- All activities as part of the project
- ATOL protection
- Airport meet/greet
- 24/7 Emergency contact



NOT Included

- Personal Travel Insurance *
- Meals on travel days – before arriving & after departing from the project.
- Lunches
- Any activities not specified as part of the project
- Visas/travel documents
- Tips

* We recommend that you take out personal travel insurance as soon as your booking is confirmed.

USEFUL INFORMATION



Suggested kit list

- Short sleeve shirts
- Long work trousers and shorts
(Or work trousers with zip-off longs)
- T shirts
- Hiking boots/comfortable walking shoes to work in every day
- Rain jacket
- Sweatshirt/fleece (Winter months pack plenty)
- Padded parka jacket/windbreaker – (it can get very cold on the boats even in summer)
- Daypack rucksack
- Socks
- Hat for sun protection / Warm Hat (winter only)
- Working gloves
- Changes of casual clothes for evenings
- Underwear
- Sandals / comfy shoes to wear after work hours
- Beach towel
- Swimwear
- Toiletries
- Tick/insect repellent
- Personal medical items and First Aid Kit
- Binoculars
- Sunscreen & sunglasses

Other useful items:

- Good torch
- Water bottle
- Camera
- Spare batteries
- Mammal/bird book
- Notebook/diary and pen
- Lip balm

All work clothes should be neutral or earth tones for working at the project
No skimpy or bright-coloured clothing to be worn.



GLOBAL reach. **ADVENTURE** for all. **PROJECTS** to inspire.

Explore our network of Global Adventure Projects:



GLOBALADVENTUREPROJECTS.COM

