



## PRE-DEPARTURE INFORMATION PACK

# Waterberg Wildlife & Veterinary Course Entabeni



**GLOBAL** reach. **ADVENTURE** for all. **PROJECTS** to inspire.

# TRIP OVERVIEW

AFRICA

**College – Booking Reference 4685**

## Trip Dates:

14<sup>th</sup> September – 27<sup>th</sup> September

## Flights:

Flight No	Flight Date	Dept.	Dept. Time	Arr.	Arr. Time
BA55	14/09/2025	London Heathrow (LHR)	19:05	Johannesburg (JNB)	07:15 + 1 Day
BA56	27/09/2025	Johannesburg (JNB)	19:25	London Heathrow (LHR)	05:35 + 1 Day

\*Always check the flight timings on your final documents

**Baggage Allowance** – 1 piece checked baggage @ 23kgs, 1 piece hand baggage max dimensions 56x45x25 cms

## Project:

Waterberg Wildlife & Veterinary Course – Entabeni



## Arrival at Johannesburg International Airport (OR Tambo)

On arrival at Johannesburg International Airport after clearing immigration, collect your bags, clear customs and make your way to the arrivals hall.

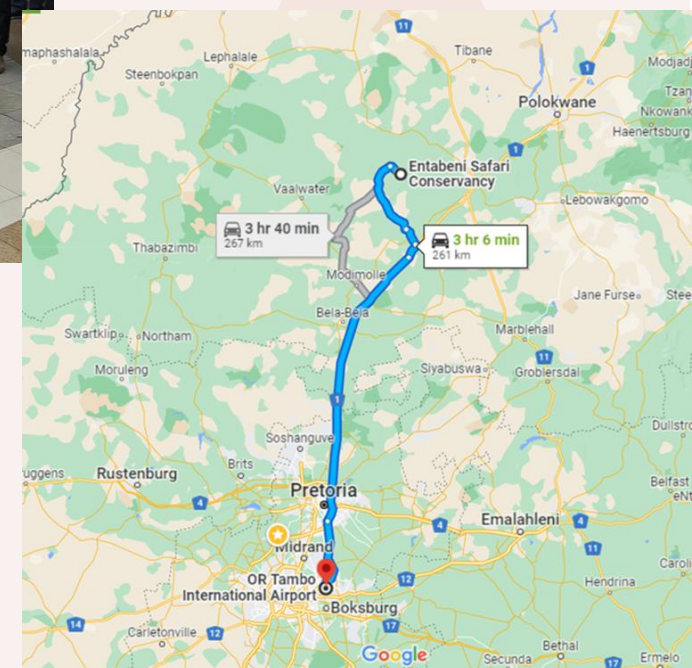
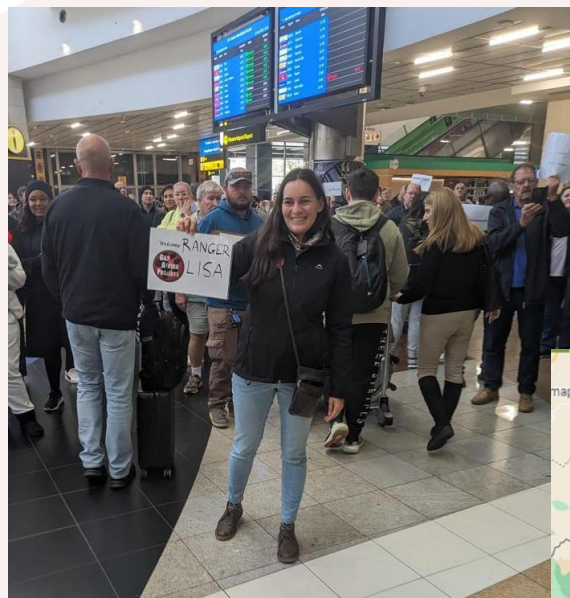
The GAP Africa representative will be there to meet you and assist you to your transport with Shuttle King, who will be waiting at the statue and will be transferring you to Entabeni Safari Conservancy, a drive of approximately 3.5 hours

The driver will stop at a shop on the way for you to get snacks, drinks etc.

If for any reason you are unable to locate the representative, please call Shuttle King:

Terri on : + 27 71 242 8838

Or Carmen: +27 79 313 2276



# CONTACT DETAILS

AFRICA

## Address

Entabeni Safari Conservancy  
Haakdoring Road  
Mokopane  
Limpopo 0600  
South Africa

## Telephone

+27 (0) 81 530 0144  
+27 (0) 76 557 2564

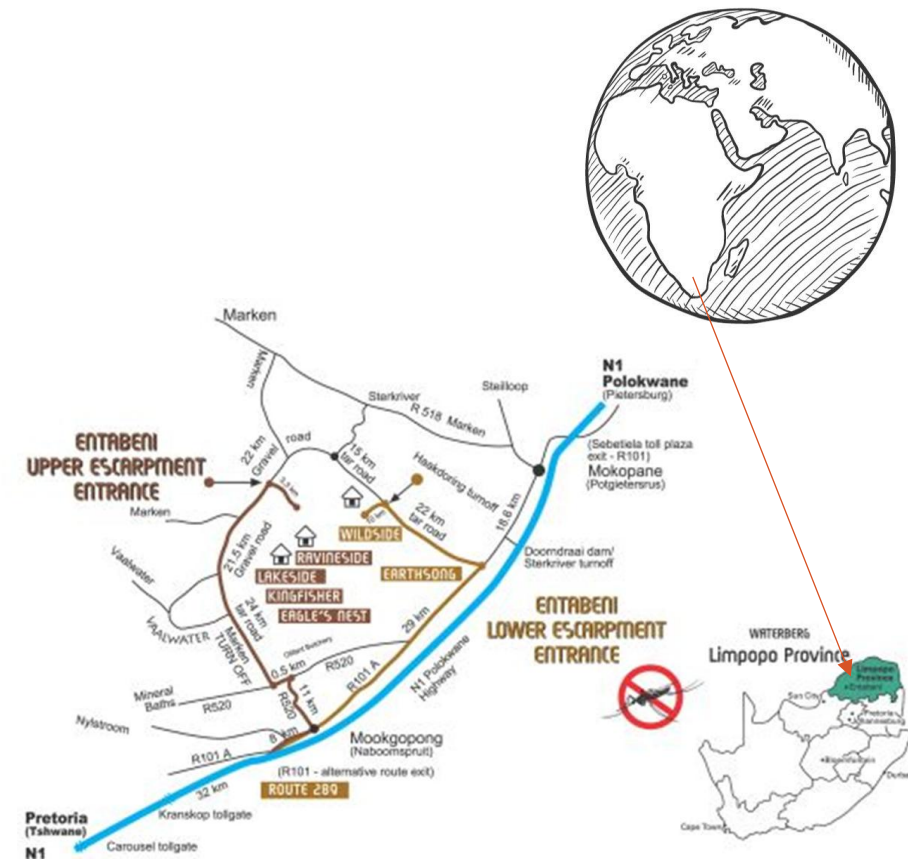
## Gap Africa Projects

+44 (0) 744 260 1694

## 24 Hour Emergency Only

## Gap Africa Projects In Country Contact

+27 (0) 79 313 2276 Carmen Warmenhove



## Health Risks

### Immunisation:

When entering South Africa, no international immunisation is required, however, a yellow fever vaccination certificate is required from travellers if they enter South Africa within 6 days of leaving an infected country.

Our advice: Visit your local (travel) doctor to get up-to-date information about requirements when travelling.

DTP inoculation (diphtheria, tetanus and polio) is essential. Please visit the following web page for advice from the UK Foreign Office:

<https://travelhealthpro.org.uk/country/201/south-africa>

### Malaria:

The Waterberg area of the Limpopo Province where Entabeni is located is malaria free.

<http://www.sa-venues.com/malaria-risk-areas.htm>

### HIV/Aids in South Africa:

As in other countries, HIV/Aids is a serious concern in South Africa and one you must be aware of. You should always be careful when dealing with an injured person to avoid the risk of infection. Always take necessary precautions and avoid sexual contact.

### Sun:

South Africa has a warm sunny climate, you should wear sunscreen and a hat whenever you are out of doors during the day, particularly between 10 am and 4 pm – regardless of whether there is cloud cover or not. Whatever your complexion you can still get sunburned if you are from a cooler climate. Sunglasses are also recommended as the glare of the African sun can be very strong.

### Drinking Water:

Drinking water is available at the project; always make sure you keep hydrated.



# USEFUL INFORMATION

AFRICA

## Climate

Summers in the Limpopo Province are warm, temperatures may exceed 40c and winters are mild however temperature can fall to below 0c at night and early mornings.

Have a look at the accuweather website, link below, for more information:

<https://www.accuweather.com/en/za/sterkrivier/305655/weather-forecast/305655?city=sterkrivier>

## Tipping

Whilst there is no obligation, it is a nice gesture to show your appreciation for the rangers and housekeeping staff by leaving a small tip/donation for the staff at the reserve when you leave; any amount is always appreciated.

## Currency & Credit Cards

The currency for South Africa is the South African Rand (ZAR). Foreign exchange may be arranged at the airport or in major centres. It is not recommended that travellers carry large sums of cash, keep a reasonable amount on hand and primarily use credit cards.

All major credit cards are widely accepted at shops in large towns, the reserve does have credit card facilities.

Wise Travel Card offers up to £500.00 with no transfer fee for Gap Africa Project Travellers:



<https://wise.prfln/l/XZJx9gq>

# USEFUL INFORMATION

AFRICA

## Phones & Internet

Mobile phone coverage is good at the accommodation, although there may be some areas on the reserve where there isn't any coverage. eSIM or purchasing a SIM card at the airport is another option

Wi-Fi is available at the accommodation however internet speeds are not up to international urban standards but are effective for communication.

We have partnered with Holafly, an eSim provider who have offered a 5% discount when you use the code GAPAFRICAPROJECTS

## Benefits of an eSIM

Holafly

- Unlimited Data Plans
- Keep your WhatsApp number
- Immediate Delivery
- Uses both Vodacom and MTN the two major networks in South Africa



<https://holafly.sjv.io/APK5yR>

-5% discount applied to all plans

<b>5 Days</b> Unlimited data <b>£22.80</b> <del>£24.00</del> GBP 5%	<b>7 Days</b> Unlimited data <b>£32.30</b> <del>£34.00</del> GBP 5%	<b>10 Days</b> Unlimited data <b>£35.15</b> <del>£37.00</del> GBP 5%
<b>15 Days</b> Unlimited data <b>£37.05</b> <del>£39.00</del> GBP 5%	<b>20 Days</b> Unlimited data <b>£46.55</b> <del>£49.00</del> GBP 5%	<b>30 Days</b> Unlimited data <b>£63.65</b> <del>£67.00</del> GBP 5%

# USEFUL INFORMATION

AFRICA

## Insurance

Personal travel insurance is compulsory. Travel insurance does not need to be expensive and there are many good deals available for backpackers etc. Always be sure to check the insurance details to make sure you are covered for Covid 19, theft, loss, illness and injury. Check to see if your medical benefits are paid out as they occur or on your return home.

Please follow this link to our preferred insurer:



<https://www.truetraveller.com/backpackers-insurance?tag=4480>

You should select 'Adventure Pack' as this will cover you for the type of activities you will undertake during your trip. If you use an alternative insurer, please ensure you are covered for **light manual work**.

## Stay safe overseas – KBYG

The better prepared you are when you travel abroad the safer you will be. The Foreign, Commonwealth and Development Office offers 'Know Before You Go' travel advice, including simple precautions you can take before and during your trip.

To find out more, check out their website:

<https://www.gov.uk/browse/abroad/travel-abroad>

## Passport Requirements

It can take many weeks to obtain a passport – remember to start this process in plenty of time.

Your passport needs to be valid for at least 30 days beyond your intended exit date and have at least two blank pages. You can check requirements by using the IATA Travel Centre site [www.iatatravelcentre.com](http://www.iatatravelcentre.com)

## Visa Requirements

A visa is not required for British Passport holders, all other nationalities should check the requirements via the website below, if required a visa can be obtained from the South African High Commission.

<http://www.dha.gov.za/index.php/immigration-services/exempt-countries>



# ACCOMMODATION & LIFESTYLE

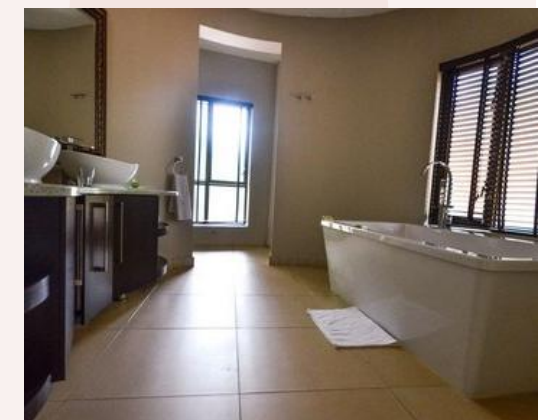
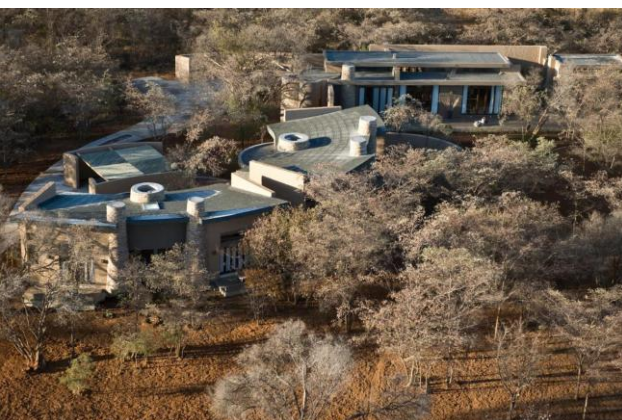
AFRICA

## Entabeni Villas

Each Villa offers a spacious and open plan layout, with a lounge and dining area as well as a fully equipped kitchen.

The African-inspired interior with its natural palette contributes to the relaxing atmosphere.

The accommodation has a variety of 3, 4, 5 and 6 bedroom self-catering units.



ANY QUESTIONS?

[INFO@GAPAFRICAPROJECTS.COM](mailto:INFO@GAPAFRICAPROJECTS.COM) | +44 (0)207 1937819

PRE DEPARTURE INFORMATION PACK 9



## Meals

All meals are included, the students will self prepare meals as a group in one of the kitchens.

Some days lunch will be at the accommodation, other days lunch will be brought into the field to be had as a picnic.

Evenings are spent at leisure around the campfire.

Only Sunday will be an off day to 'chill' in camp or do extra activities.



# ACCOMMODATION & LIFESTYLE

AFRICA

## Sunday additional activities (own cost)

Horseback Safari Max 4 people at a time

- Horse Riding (1 hour) R590 pp
- Horse Riding (2 Hours) R1090 pp
- Sunset Cruise (Includes finger foods & soft drinks ) R690 pp
- Cultural Foundation Drumming session R600 pp
- (Guided Bush Walk (Non-Predator) R300 pp)
- (Guided Bush Walk (Predator) R800 pp)
- Bicycle Rental – 4 hours at Clubhouse R120 pp
- Spa massages between R320 – R830 pp
- Marimba Band and Pedi Dancers (Group activity enquire for rates)
- Game Drive and Boat Cruise with Lunch at Lakeside R890 pp
- Picnic Lunch at Yellow-wood Gorge Mountain Pool R890 pp
- Stargazing R790 pp





## Suggested kit list

- Short sleeve shirts
- Long work trousers and shorts (Or work trousers with zip-off longs)
- T shirts
- Hiking Boots/comfortable walking shoes to work in every day
- Rain jacket (especially during summer months)
- Sweatshirt/Fleece (Winter months pack plenty)
- Buff/neck warmer useful all year round
- Padded parka jacket/windbreaker - (it can get very cold on an open vehicle - even on a summer evening)
- Daypack rucksack
- Socks
- Hat for sun protection / Warm hat (winter only)
- Gloves for warmth (winter only)
- Changes of casual clothes for evenings
- Underwear

- Swimming Towel
- Swimming costume
- Sunscreen & Sunglasses
- Sandals/comfy shoes to wear after work hours
- Toiletries
- Tick/insect repellent
- Personal medical items & First Aid Kit
- Binoculars
- Torch/headlamp
- Water bottle

### Other useful items:

- Stethoscope
- Surgical gloves
- Camera
- Powerbank
- Mammal/bird book
- Notebook/diary and pen
- Watch

# WHAT'S INCLUDED

AFRICA

## What is included?

- Flights
- Transfers to/from project
- Accommodation
- Three meals per day
- All activities as part of the project
- ATOL protection
- Airport meet/greet
- 24/7 In country support



## NOT Included

- Personal Travel Insurance \*
- Meals on travel days – before arriving & after departing from project
- Any activities not specified as part of the project
- Weekend activities
- Visa's/travel documents
- Tips

\* We recommend you take out insurance as soon as your booking is confirmed



**GLOBAL** reach. **ADVENTURE** for all. **PROJECTS** to inspire.

Explore our network of Global Adventure Projects:



[GLOBALADVENTUREPROJECTS.COM](http://GLOBALADVENTUREPROJECTS.COM)

