



## PROJECT INFORMATION PACK

# Entabeni Safari Conservancy

## Vet Nurse Group



**AFRICA**

**GLOBAL** reach. **ADVENTURE** for all. **PROJECTS** to inspire.

# TRIP OVERVIEW

AFRICA

## College of Animal Welfare – Booking Reference 4685

### Trip Dates:

14<sup>th</sup> September – 27<sup>th</sup> September

### Flights:

Flight No	Flight Date	Dept.	Dept. Time	Arr.	Arr. Time
BA55	14/09/2025	London Heathrow (LHR)	19:05	Johannesburg (JNB)	07:15 + 1 Day
BA56	27/09/2025	Johannesburg (JNB)	19:25	London Heathrow (LHR)	05:35 + 1 Day

\*Always check the flight timings on your final documents

**Baggage Allowance** – 1 piece checked baggage @ 23kgs, 1 piece hand baggage max dimensions 56x45x25 cms

### Project:

Waterberg Wildlife & Veterinary Course – Entabeni

### Trip Cost:

£2795.00 per person

£300.00 deposit

£1247.50 Instalment due 26/05/2025

£1247.50 Balance due 21/07/2025





AFRICA

# ABOUT THE PROJECT

The conservation work  
in more detail



# ABOUT ENTABENI

AFRICA

## ENTABENI SAFARI CONSERVANCY

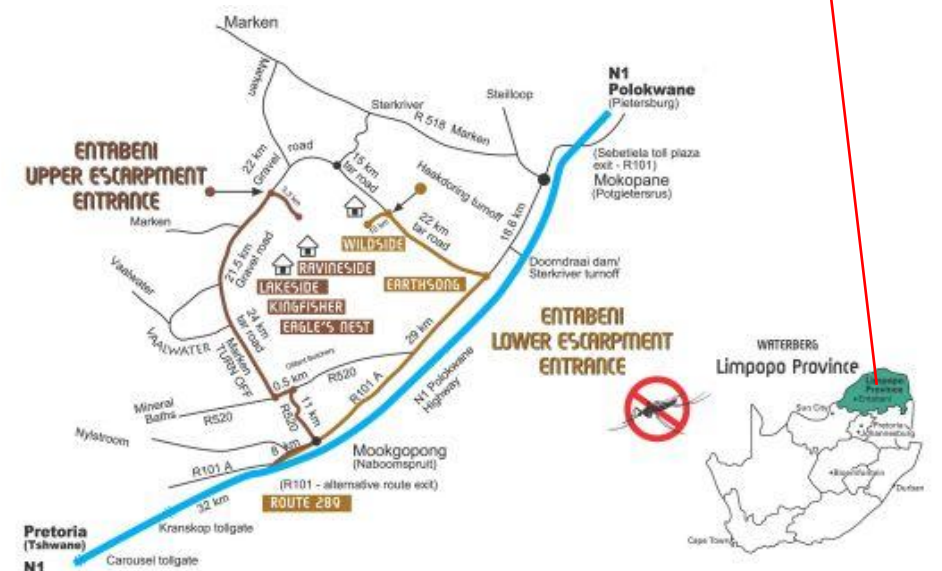
### Location

The Waterberg Wildlife and Veterinary Course – Entabeni is based at the 22,000-hectare Entabeni Safari Conservancy in the Limpopo Province of South Africa.

Located a pleasant 3.5 hour drive from Johannesburg; in the **malaria-free** area of the Waterberg, Limpopo Province

Entabeni is set within a tranquil, natural setting boasting changing vistas, diverse eco-systems and a breath-taking mountainous backdrop. Entabeni is the integration of a 22,000 hectare Big 5 Game Reserve, a resort and luxurious lodges.

It boasts spectacular scenery, with mountains, waterfalls and unspoilt ravines.



## A place that promotes the connection between people and nature

The Waterberg contains pristine habitats, abundant bird and wildlife and has a natural unspoilt beauty. The Waterberg is an escarpment of massive sandstone buttresses and outcrops, incorporating many rivers, streams and wetlands, stretching for 150 km in a long arc.

The Waterberg has many special and unique characteristics which is why UNESCO approved the area for biosphere reserve status in 2001.

The Waterberg is a critical conservation area for; African wild dogs, with the last free-roaming pack in South Africa; black and white rhino, with the third largest population within South Africa; and the Cape Vulture, with the largest colony of 800 breeding pairs.



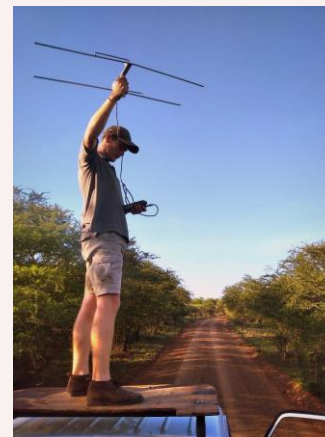


## WATERBERG WILDLIFE AND VETERINARY COURSE – ENTABENI

This course provides the opportunity for hands-on practical wildlife experience for pre-vet/vet nurses/technicians or those studying in the veterinary field.

Based at the reserve's student camp working directly with the monitoring team; this department runs and manages the day-to-day decisions and monitoring of the wildlife and ecosystem of the reserve.

The team and their work are crucial to the management and welfare of all wildlife on the reserve, as they monitor the animals' conditions, herd structures, locations and behaviours. Time will be spent working with the reserve's veterinarian and other local wildlife vets with whom the team work.



# ABOUT THE PROJECT

AFRICA

## Course Fundamentals and Structure

- Gain understanding of wildlife research and management that govern veterinary practices on reserve
- A Wildlife Vet's role and responsibilities
- Expose participants to behind-the-scenes wildlife conservation and veterinary work
- Immobilisation and capture techniques used for various wildlife species
- Rhino protection through Veterinary Management
- Conservation Research
- Wildlife management and conservation challenges
- Appreciate the importance of herd health and intensive wildlife breeding
- Gain experience in a variety of veterinary wildlife and conservation working environments
- Vegetation types suitable for wildlife
- Tracks and tracking of Big Five
- Waterberg Wild Dog Project
- Rhino rehabilitation



# ABOUT THE PROJECT

AFRICA

## Course Fundamentals and Structure

### WEEK 1

Introduction to Entabeni Safari Conservancy and Research Projects

Introduction to Wildlife Veterinary work in the Context of African Wildlife (Dr Zoe Glyphis – Local Wildlife Vet) – 1 Day

Rhino orphanage – assist with orphaned rhino calves

Time spent with research team conducting conservation activities – 4 Days

### Week 2

Time spent with research team conducting conservation activities – 3 Days

Further insight into Wildlife Veterinary work (Dr Pierre Bester) – 1 Day

Build up to possible intervention and planning

Specialist Wildlife Vet to conduct intervention with group\*\* (Dr Pierre Bester) – 1 Day





## The Rhino Orphanage

The Rhino Orphanage was the first-ever specialised, non-commercial centre dedicated to the rescue, rehabilitation, raising and release of orphaned rhinos back into the wild.

Although newborn rhinos can weigh up to 50kgs, they are essentially “helpless” and require protection so that they may survive and ultimately thrive.

Rhino calves and rhino mothers are closely bonded. Rhino young are fiercely protected by their mothers in the wild, so when a rhino mother is killed, the rhino orphan becomes particularly vulnerable, and their longevity is endangered. Under normal circumstances, rhino calves will stay with their mothers for around 3 years. For this reason, the rhino orphans in their care typically require the same intensity and timeframe of nurturing from the carers.





# ABOUT THE PROJECT

AFRICA

## Dr Pierre Bester – Wildlife Veterinarian

Rhino orphanage veterinarian, Dr Pierre Bester has a mixed animal practice treating large and small domestic animals as well as wildlife. The main scope of his work includes the immobilisation, treatment, and translocation of African wildlife, including megaherbivore: rhinos and elephants.

He has been involved with the immobilisation and translocation of thousands of rhinos, as well as countless other species.





# ABOUT THE PROJECT

AFRICA

## Dr Zoe Glyphis – Wildlife Veterinarian – Predator Specialist

Dr Zoe Glyphis has become one of South Africa's leading predator specialists and is on the forefront with veterinary medicine and veterinary assistance of wild dog, heyna and cheetah conservation all over South Africa.

She is helping and assisting several NGO groups and organizations with their efforts to increase predator ranges and to establish safe and genetically viable populations in new conservation areas.



ANY QUESTIONS?

[INFO@GAPAFRICAPROJECTS.COM](mailto:INFO@GAPAFRICAPROJECTS.COM) | +44 (0)207 1937819

PROJECT INFORMATION PACK 11



# ABOUT THE PROJECT

AFRICA

## Possible Lectures & Debate

- Drugs used in wildlife medicine
- Calculating doses in wildlife
- Logistics of wildlife transportation: customised vehicles, crates and equipment
- The Game Trade-Auction and value of livestock
- Game capture systems
- Darting wildlife
- Boma management and rehabilitation
- Orphaned Rhino rehabilitation
- Parasite control
- Managing game reserves and Land Capacity Model
- Species control – predator pits
- State veterinary disease control in practice
- Documentation required: Red Cross Permits







AFRICA

# Entabeni Safari Conservancy

Accommodation & Lifestyle



# ACCOMMODATION & LIFESTYLE

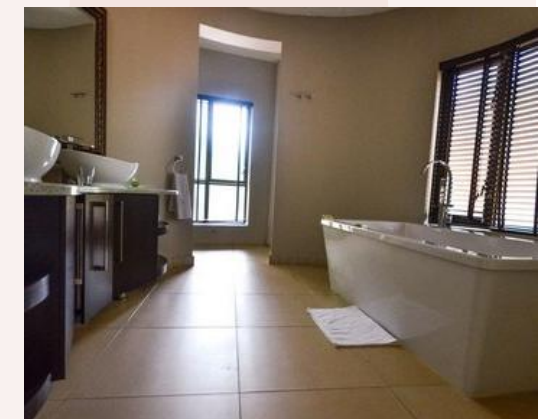
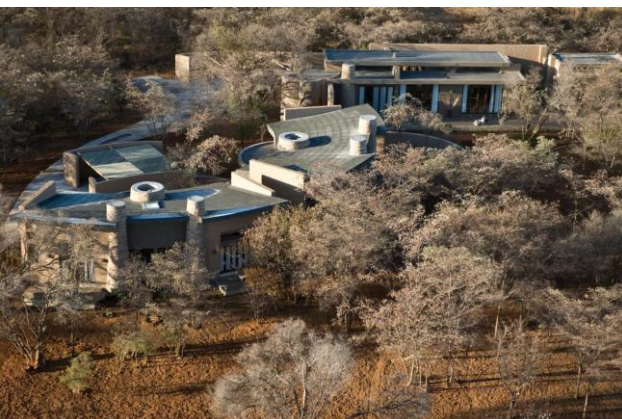
AFRICA

## Entabeni Villas

Each Villa offers a spacious and open plan layout, with a lounge and dining area as well as a fully equipped kitchen.

The African-inspired interior with its natural palette contributes to the relaxing atmosphere.

The accommodation has a variety of 3, 4, 5 and 6 bedroom self-catering units.



ANY QUESTIONS?

[INFO@GAPAFRICAPROJECTS.COM](mailto:INFO@GAPAFRICAPROJECTS.COM) | +44 (0)207 1937819

PROJECT INFORMATION PACK 14



## Meals

All meals are included, the students will self prepare meals as a group in one of the kitchens.

Some days lunch will be at the accommodation, other days lunch will be brought into the field to be had as a picnic.

Evenings are spent at leisure around the campfire.

Only Sunday will be an off day to 'chill' in camp or do extra activities.



# ACCOMMODATION & LIFESTYLE

AFRICA

## Sunday additional activities (own cost)

- Horse Riding (1 hour) R590 pp
- Horse Riding (2 Hours) R1090 pp
- Sunset Cruise (Includes finger foods & softdrinks) R690 pp
- Cultural Foundation Drumming session R600 pp
- Guided Bush Walk (Non Predator) R300 pp
- Guided Bush Walk (Predator) R800 pp
- Bicycle Rental – 4 hours at Clubhouse R120 pp
- Spa massages between R320 – R830 pp
- Marimba Band and Pedi Dancers (Group activity enquire for rates)
- Game Drive and Boat Cruise with Lunch at Lakeside R890 pp
- Picnic Lunch at Yellow-wood Gorge Mountain Pool R890 pp
- Stargazing R790 pp







AFRICA

# USEFUL INFORMATION

Inclusions/Exclusions  
Recommended Kit List

# WHAT'S INCLUDED

AFRICA

## What is included?

- Flights
- Transfers to/from project
- Accommodation
- Three meals per day
- All activities as part of the project
- ATOL protection
- Airport meet/greet
- 24/7 In country support



## NOT Included

- Personal Travel Insurance \*
- Meals on travel days – before arriving & after departing from project
- Any activities not specified as part of the project
- Weekend activities
- Visa's/travel documents
- Tips

\* We recommend you take out insurance as soon as your booking is confirmed



## Suggested kit list

- Short sleeve shirts
- Long work trousers and shorts (Or work trousers with zip-off longs)
- T shirts
- Hiking Boots/comfortable walking shoes to work in every day
- Rain jacket (especially during summer months)
- Sweatshirt/Fleece (Winter months pack plenty)
- Buff/neck warmer useful all year round
- Padded parka jacket/windbreaker - (it can get very cold on an open vehicle - even on a summer evening)
- Daypack rucksack
- Socks
- Hat for sun protection / Warm hat (winter only)
- Gloves for warmth (winter only)
- Changes of casual clothes for evenings
- Underwear

- Swimming Towel
- Swimming costume
- Sunscreen & Sunglasses
- Sandals/comfy shoes to wear after work hours
- Toiletries
- Tick/insect repellent
- Personal medical items & First Aid Kit
- Binoculars
- Torch/headlamp
- Water bottle

### Other useful items:

- Stethoscope
- Surgical gloves
- Camera
- Powerbank
- Mammal/bird book
- Notebook/diary and pen
- Watch

# WHY SHOULD I TRAVEL?

AFRICA

## What do previous travellers say about the Waterberg Wildlife & Veterinary Course?



"The post-mortem **helped** massively with anatomy and physiology **revision!**"



"It is difficult to pinpoint one thing but probably the most **memorable** aspect was being involved in a rhino **sedation** in which the SVNs were **actively** involved!"



"I am more **humbled**. I know what I want to do moving forward career-wise"

Reference: GAP Africa Projects Post Project Trip Questionnaire 23/24



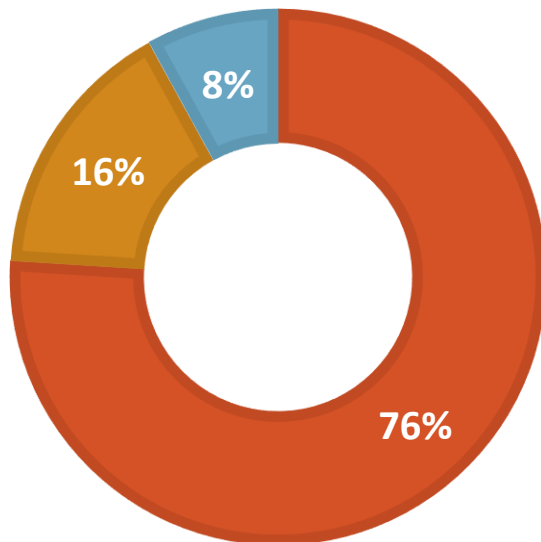
# WHY SHOULD I TRAVEL?

AFRICA

## Personal Development

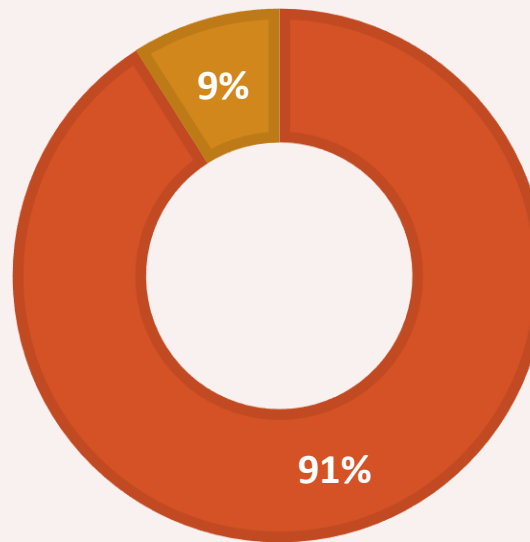
### MENTAL HEALTH IMPROVEMENT

■ Yes ■ No ■ NA



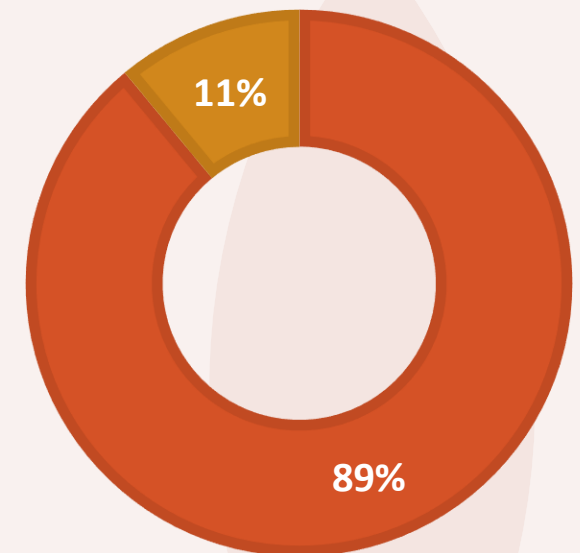
### CONFIDENCE IMPROVEMENT

■ Yes ■ No



### RESILIENCE IMPROVEMENT

■ Yes ■ No



Reference: GAP Africa Projects Post Project Trip Questionnaire 23/24



**GLOBAL** reach. **ADVENTURE** for all. **PROJECTS** to inspire.

Explore our network of Global Adventure Projects:



[GLOBALADVENTUREPROJECTS.COM](http://GLOBALADVENTUREPROJECTS.COM)

