



Moulton College Project Presentation

The background image is a composite of two savanna scenes. On the left, a group of four people (three men and one woman) are seen from behind, standing in tall grass and looking towards a distant, hilly landscape under a cloudy sky. On the right, a close-up of a lioness is shown, looking towards the left with its mouth slightly open. A large, semi-transparent circular graphic is centered over the image, containing the text "KwaZulu-Natal Conservation Research".

KwaZulu-Natal Conservation Research

AFRICA

GLOBAL reach. **ADVENTURE** for all. **PROJECTS** to inspire.

ABOUT US:

AFRICA

GAP Africa Projects

- We are a specialised travel company that offers academic trips and volunteering opportunities for groups and individual travellers, in a number of locations worldwide
- We pride ourselves on curating experiences which are personalised to your needs and requirements
- Our first project travelled in 2010
- Full ATOL Bonding
- Working with over 50 Colleges and Universities around the UK
- A small dedicated team in the UK and South Africa.





AFRICA

KWAZULU-NATAL PROJECT OVERVIEW

Overview and location
of the project

ABOUT THE PROJECT

AFRICA

Your Conservation Field Trip Explained

- A unique academic conservation experience based in South Africa
- Live and work in the wild of Africa
- The opportunity to experience hands on wildlife conservation
- Bespoke, tailor made projects to suit research requirements
- Project Activities include:
 - Pioneering Conservation Research
 - Conservation Activities
 - Cultural Enrichment
- Full 13 nights in South Africa
- All-inclusive experience
- The most incredible wildlife experience you will ever have

ABOUT THE PROJECT

AFRICA

What is a Game Reserve?

- A game reserve is a large area of protected land where wild animals can live safely.
- Wildlife is free roaming throughout the reserve allowing them to thrive in their natural habitat.
- Reserves are either Government Owned (National Parks) or Privately Owned/Managed.
- Most reserves will have physical boundaries i.e. electrified fence line.
- Due to physical boundaries, wildlife must be managed due to restraints on population growth, migration and resources.
- Wildlife is protected but also utilised as a tourist attraction (Eco Tourism) which creates funding for conservation efforts and research.





AFRICA

ABOUT THE PROJECT

Our conservation work
in more detail

ABOUT THE PROJECT

AFRICA

KwaZulu-Natal Conservation Research

Our academic team and qualified rangers at the KwaZulu-Natal Conservation Research Project offer a bespoke course to each institution dependent on their own personal objectives and learning needs.

We set out the basis of the trip, comprising of a 13-day academic module split between the two conservation reserves plus a three-night coastal adventure



A full day will be planned but will vary from day to day depending on the days task and research goals.

The project split and duration are as follows:

13 Day Itinerary

Days 1 – 6

Nambiti Big 5 Conservation Research

Days 6 – 10

Zingela Wilderness Conservation and Adventure Activities

Days 10 – 13

St Lucia coastal adventure





AFRICA

6 Days at Nambiti Game Reserve

A Big Five Game Reserve

ABOUT THE PROJECT

AFRICA

Nambiti Game Reserve

Nambiti Game Reserve is a magnificent 23,000 acres of unspoiled wilderness boasting the Big 5 and incredible biodiversity (grasslands, riverine bush, savannah and thornveld) offering unprecedented diversity of wildlife.



ABOUT THE PROJECT

AFRICA

Home to over 40 Species of Mammal



ANY QUESTIONS?

INFO@GAPAFRICAPROJECTS.COM | +44 (0)207 1937819

Presentation 10

ABOUT THE PROJECT

AFRICA

Many Reptile, Insect and Bird Species



ANY QUESTIONS?

INFO@GAPAFRICAPROJECTS.COM | +44 (0)207 1937819

Presentation 11

YOUR PROJECT

AFRICA

Your Conservation Programme – Nambiti

Students will be taught and work alongside the field guides and conservation team. The following examples depict the day-to-day activities that may be undertaken as part of the project at Nambiti.

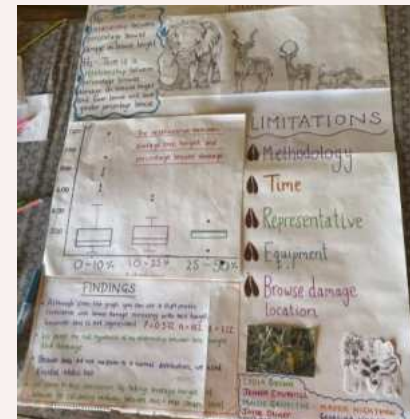
- Alien Vegetation Control / Reserve Maintenance
- Use of Telemetry Tracking
- Elephant Monitoring / Population Study
- Rhino Monitoring – Awareness
- Anti-poaching talk and fence walk
- Camera Trapping
- Night Drive
- Big Five Bush Walk
- Habitat and Prey Selection of Predators
- Tracks, Signs and Spoor
- Community Development



NAMBITI GAME RESERVE

AFRICA

Nambiti Research Team



ANY QUESTIONS?

INFO@GAPAFRICAPROJECTS.COM | +44 (0)207 1937819

Presentation 13

NAMBITI GAME RESERVE

AFRICA

Use of Telemetry Tracking



ANY QUESTIONS?

INFO@GAPAFRICAPROJECTS.COM | +44 (0)207 1937819

Presentation 14

NAMBITI GAME RESERVE

AFRICA

Ecology Trails: Tracks, signs and spoors



ANY QUESTIONS?

INFO@GAPAFRICAPROJECTS.COM | +44 (0)207 1937819

Presentation 15

NAMBITI GAME RESERVE

AFRICA

Big Five Bush Walk



ANY QUESTIONS?

INFO@GAPAFRICAPROJECTS.COM | +44 (0)207 1937819

Presentation 16

ABOUT THE PROJECT

AFRICA

Research – Habitat and Prey Selection: Predators

Focus on Lion and Cheetah populations:

GPS coordinates from tracking collars

Can be used for movement/spatial/home range analysis



Wildlife Monitoring – Elephant Impact Assessment

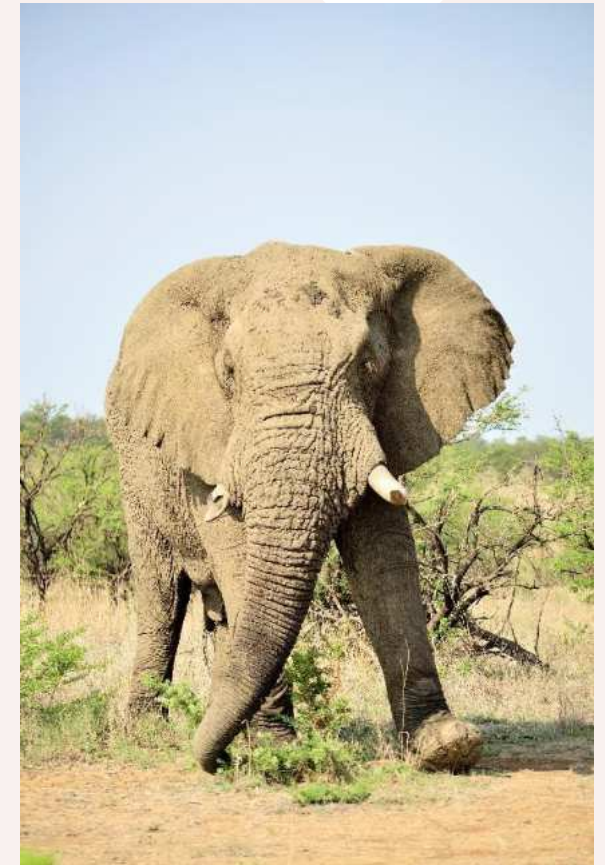
Research into impact of elephant on the eco system:

Matriarch collared so GPS range data available

Herd population data

Elephant impact assessments from February '23

Long term ongoing project looking at elephant impact on vegetation



NAMBITI GAME RESERVE

AFRICA

Rhino Monitoring – Awareness and Anti-Poaching



ANY QUESTIONS?

INFO@GAPAFRICAPROJECTS.COM | +44 (0)207 1937819

Presentation 19

NAMBITI GAME RESERVE

AFRICA

Camera Trap – Research and Study

Set out own camera traps

Learn about correct placement, best location etc

Never know what we'll find!



NAMBITI GAME RESERVE

AFRICA

Night Game Drives



ANY QUESTIONS?

INFO@GAPAFRICAPROJECTS.COM | +44 (0)207 1937819

Presentation 21

NAMBITI GAME RESERVE

AFRICA

Community Projects & Zulu Culture

Learn about traditional Zulu culture

Community engagement essential for longterm conservation

Positive impact supporting not for profit initiatives

Projects: Move Africa, Jabong Hats & Rhino Art



ABOUT THE PROJECT

AFRICA

Community – GAP Donation Bags



ANY QUESTIONS?

INFO@GAPAFRICAPROJECTS.COM | +44 (0)207 1937819

Presentation 23



AFRICA

4 Days at Zingela Nature Reserve

River Research and Adventure

Your Conservation Programme – Zingela

Students will be taught and work alongside the field guides and scientific team. The following examples depict the day-to-day activities that may be undertaken as part of the project at Zingela Reserve.

- Spatial Distribution and Habitat use of species
- Use of Telemetry Tracking
- Giraffe migration and Conservation Project
- Reptile pit fall traps
- Freshwater Ecology
- Mini SASS
- Fish Tagging
- Bird Ringing
- Educational Bush Walks – Ecology & Botany
- Tracks, Signs and Spoor
- Community Development
- Camera Trapping and data processing



ABOUT THE PROJECT

AFRICA

Zingela River Safari

Zingela Wildlife Reserve covers 12,500 acres of predator free, pristine African bushveld. You will have the opportunity to be involved with the research that takes place at the property;. You will also have the chance to participate in a host of activities during your stay.



ANY QUESTIONS?

INFO@GAPAFRICAPROJECTS.COM | +44 (0)207 1937819

Presentation 26

NAMBITI TO ZINGELA

AFRICA



ANY QUESTIONS?

INFO@GAPAFRICAPROJECTS.COM | +44 (0)207 1937819

Presentation 27

Giraffe Migration and Research Project

Population data and database for individuals

Migration and range data through unfenced territories

Diet and vegetation impact assessment

Genetic diversity



River Assessments

Fresh water eel project –
understanding life cycle using GPS
data

Fish tagging and release

Collecting biometric data

SASS – South African Scoring System



ZINGELA WILDERNESS RESERVE

AFRICA

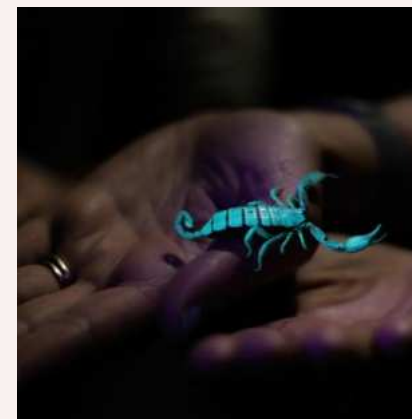
Reptile Research and Trapping

Data collection started in 2022 with annual projects planned

Species frequency

Herpetofauna succession during vegetation rehabilitation

Comparing herpetological diversity



ZINGELA WILDERNESS RESERVE

AFRICA

Educational Bush Walks – Ecology and Botany



ANY QUESTIONS?

INFO@GAPAFRICAPROJECTS.COM | +44 (0)207 1937819

Presentation 31

ZINGELA WILDERNESS RESERVE

AFRICA

River Safari – Rafting and Kayaking



ANY QUESTIONS?

INFO@GAPAFRICAPROJECTS.COM | +44 (0)207 1937819

Presentation 32

ZINGELA WILDERNESS RESERVE

AFRICA

Abseiling and Rock Climbing



ANY QUESTIONS?

INFO@GAPAFRICAPROJECTS.COM | +44 (0)207 1937819

Presentation 33



AFRICA

3 Days at St Lucia

A Coastal Adventure

Your Conservation Programme – St Lucia

Whilst at St Lucia you will get the opportunity to take part in some amazing activities but also time to relax in the beautiful coastal resort of St Lucia.

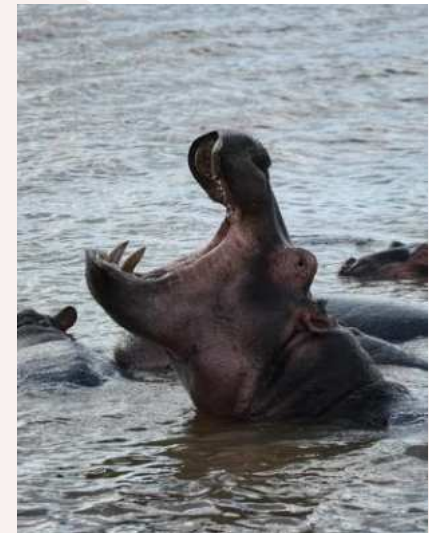
- A Hippo and Crocodile tour in the Estuary
- A visit to Cape Vidal Nature Reserve with a chance to snorkel in the Indian Ocean
- Tour and Talk of the Crocodile Research Centre
- Bird Identification
- Whale Watching Tour Seasonal and additional cost)



ST LUCIA – COASTAL ADVENTURE

AFRICA

Estuary Hippo and Crocodile Tour



ANY QUESTIONS?

INFO@GAPAFRICAPROJECTS.COM | +44 (0)207 1937819

Presentation 36

ST LUCIA – COASTAL ADVENTURE

AFRICA

Cape Vidal Nature Reserve and Snorkeling



ANY QUESTIONS?

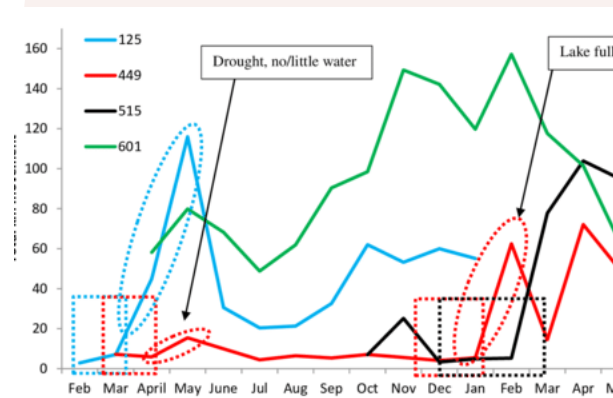
INFO@GAPAFRICAPROJECTS.COM | +44 (0)207 1937819

Presentation 37

ST LUCIA – COASTAL ADVENTURE

AFRICA

Crocodile Research Centre



ANY QUESTIONS?

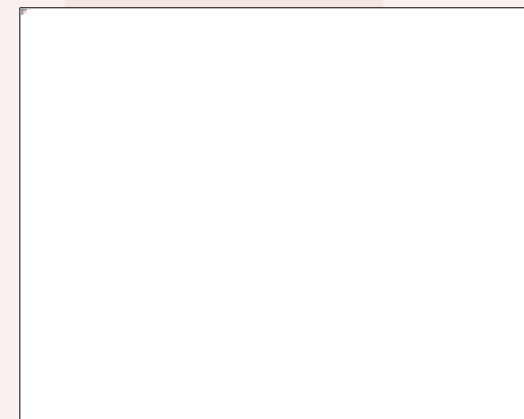
INFO@GAPAFRICAPROJECTS.COM | +44 (0)207 1937819

Presentation 38

ST LUCIA – COASTAL ADVENTURE

AFRICA

Bird Tracking and Identification



ANY QUESTIONS?

INFO@GAPAFRICAPROJECTS.COM | +44 (0)207 1937819

Presentation 39

ST LUCIA – COASTAL ADVENTURE

AFRICA

Whale Watching (Additional Cost) – This is seasonal Mid June – October



ANY QUESTIONS?

INFO@GAPAFRICAPROJECTS.COM | +44 (0)207 1937819

Presentation 40



AFRICA

ACCOMMODATION & LIFESTYLE

Life in the African Bush

ACCOMMODATION

AFRICA

Game Reserve Camps – Nambiti

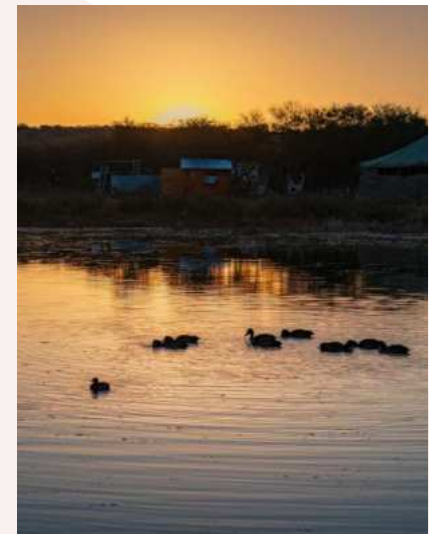
In keeping with the Safari Adventure theme, groups are accommodated on the reserve in comfortable safari tents, with communal hot and cold showers and regular flushing toilets. All meals are provided in a communal dining room.



ACCOMMODATION

AFRICA

Game Reserve Camps – Nambiti



ANY QUESTIONS?

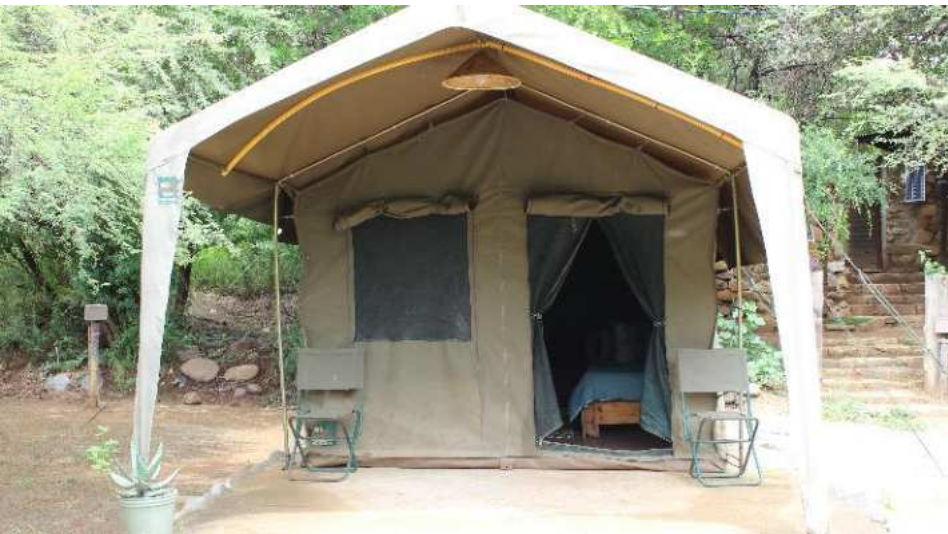
INFO@GAPAFRICAPROJECTS.COM | +44 (0)207 1937819

Presentation 43

ACCOMMODATION

AFRICA

Game Reserve Camps – Zingela



ANY QUESTIONS?

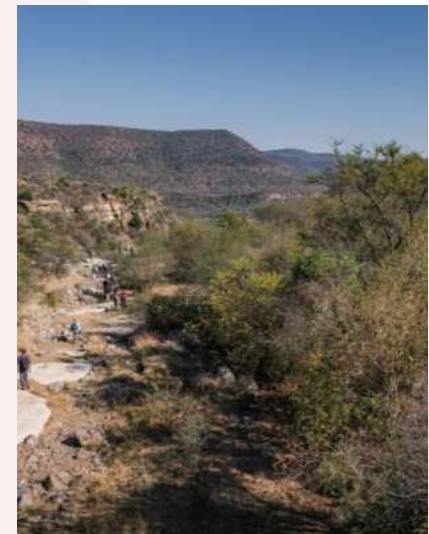
INFO@GAPAFRICAPROJECTS.COM | +44 (0)207 1937819

Presentation 44

ACCOMMODATION

AFRICA

Game Reserve Camps – Zingela



ANY QUESTIONS?

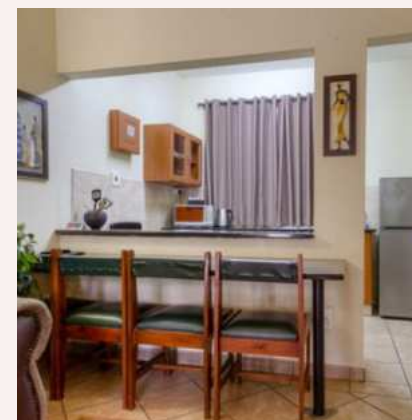
INFO@GAPAFRICAPROJECTS.COM | +44 (0)207 1937819

Presentation 45

ACCOMMODATION

AFRICA

St Lucia Coastal Accommodation



ANY QUESTIONS?

INFO@GAPAFRICAPROJECTS.COM | +44 (0)207 1937819

Presentation 46

ACCOMMODATION

AFRICA

Food at the project

Three meals are provided a day prepared by the kitchen staff with the exception of 1 lunch and 1 dinner in St Lucia

Breakfasts will consist of toast and cereals; lunch may include pasta, wraps, burgers, stir fry; dinners include meat, fish and vegetables with rice, potatoes or pasta.

On weekends a braai (BBQ) is often organised.

Please advise us of any dietary requirements in advance so we can ensure that you are adequately catered for.



ACCOMMODATION

AFRICA

Food at the project



ANY QUESTIONS?

INFO@GAPAFRICAPROJECTS.COM | +44 (0)207 1937819

Presentation 48

ACCOMMODATION & LIFESTYLE

AFRICA

Life on project – Life long memories



ANY QUESTIONS?

INFO@GAPAFRICAPROJECTS.COM | +44 (0)207 1937819

Presentation 49

ACCOMMODATION & LIFESTYLE

AFRICA

Life on project – Life long memories



ANY QUESTIONS?

INFO@GAPAFRICAPROJECTS.COM | +44 (0)207 1937819

Presentation 50

WHY SHOULD I TRAVEL?

AFRICA

What do previous travellers say about the KwaZulu-Natal Conservation Research?



"It was the most **amazing** experience I've ever had."



"I learnt so many new things that have **educated** me **beyond** classroom curriculum"



"There wasn't a single experience that didn't **amaze** me and make me feel **enriched**."

Reference: GAP Africa Projects Post Project Trip Questionnaire 23/24

WHY SHOULD I TRAVEL?

AFRICA

What do previous travellers say about the KwaZulu-Natal Conservation Research?



"Being at Nambiti really developed my knowledge of animal behaviours"



Everything **exceeded** my expectations, and the trip was **life-changing.**"



Our guide was **amazing**, we got the **opportunity** to take part in talks and demonstrations by APU

Reference: GAP Africa Projects Post Project Trip Questionnaire 23/24

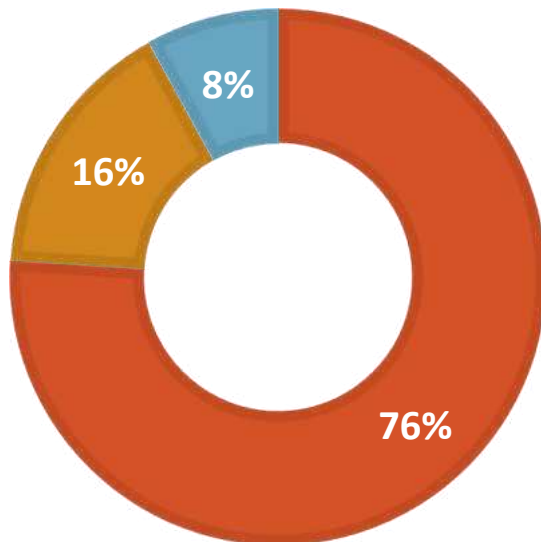
WHY SHOULD I TRAVEL?

AFRICA

Personal Development

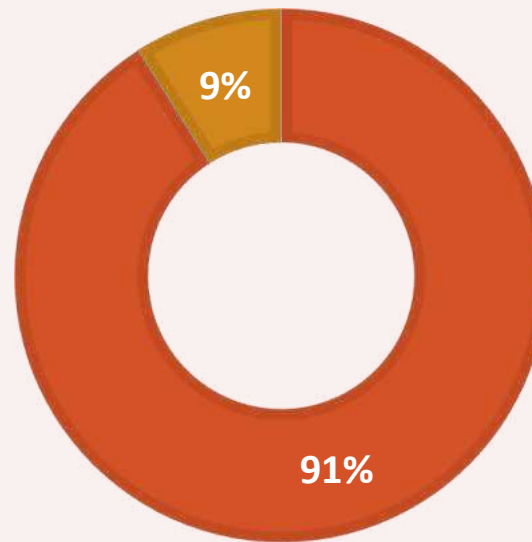
MENTAL HEALTH IMPROVEMENT

■ Yes ■ No ■ NA



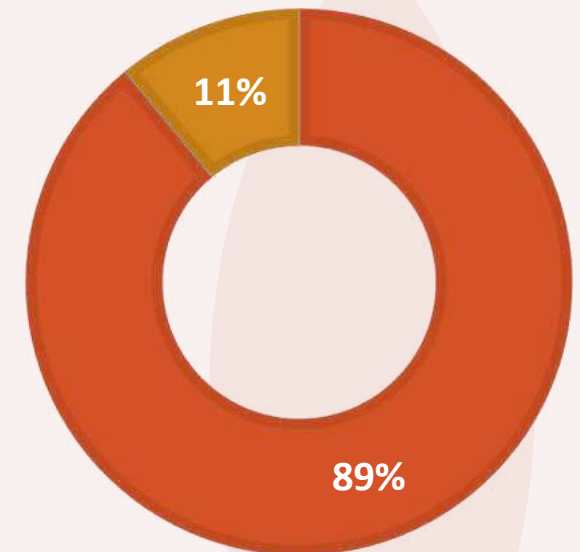
CONFIDENCE IMPROVEMENT

■ Yes ■ No



RESILIENCE IMPROVEMENT

■ Yes ■ No



Reference: GAP Africa Projects Post Project Trip Questionnaire 23/24



AFRICA

THE NEXT STEPS TO YOUR FIELD TRIP

The next steps to the trip of a
lifetime!

THE NEXT STEPS

AFRICA

What is Included?

- Flights from London Heathrow
- Transfers to/from project
- Accommodation
- Three meals per day
- All activities as part of the project
- ATOL protection
- Airport meet/greet
- 24/7 In country support

NOT Included

- Personal Travel Insurance *
- Meals on travel days – before arriving & after departing from project
- 1 lunch and 1 dinner at St Lucia
- Any activities not specified as part of the project
- Visa's/travel documents

* We recommend that you take out personal travel insurance as soon as your booking is confirmed.

THE NEXT STEPS

AFRICA



Project dates & key deadlines

Confirmed trip dates:

Depart UK: 29th June Arrive SA: 30th June 2025

Depart SA: 13th July | Arrive UK: 14th July 2025

Trip cost:

£2895.00* Based on a group of 45 (confirmed once flights have been held)

Key deadlines are:

- Return the online booking form by 10 October
- Deposit payment, £300.00 by 24 October
- 50% instalment payment of £1297.50 to be paid by 10/03/2025
- Balance payment of £1297.50 to be paid by 05/05/2025
- Payment plans available
- 16/06/2025 e-Tickets & final documents will be issued

BOOKING YOUR ADVENTURE

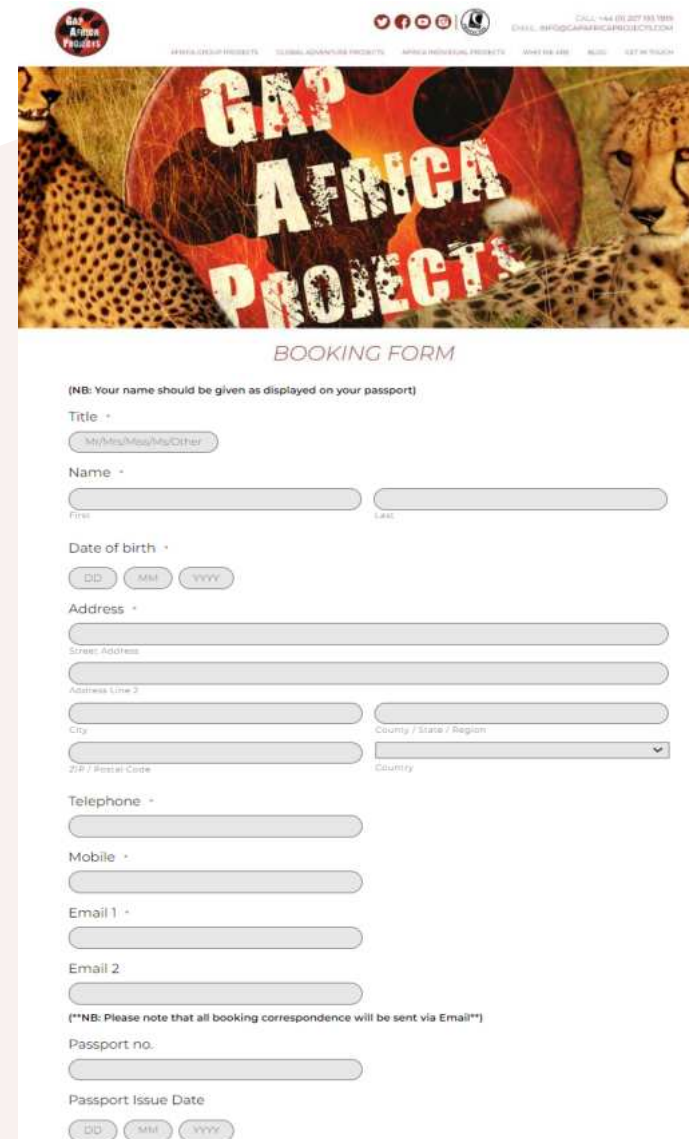
AFRICA

Booking Form

- Please submit by 10/10/2024
- No deposit required at this stage of booking
- Passport fields not mandatory

Key deadlines are:

- Deposit of £300 to confirm placement
- Instalment payment of 50% due 16 weeks before departure
- Balance payment due 8 weeks before departure



The screenshot shows the GAP Africa Projects website header with the logo and navigation links. Below the header is a banner image of two cheetahs with the text 'GAP AFRICA PROJECTS'. The main content area is titled 'BOOKING FORM' and contains a form with the following fields:

- (NB: Your name should be given as displayed on your passport)
- Title * (dropdown menu with options: Mr/Mrs/Ms/My/Other)
- Name * (First and Last name input fields)
- Date of birth * (DD, MM, YYYY input fields)
- Address * (Street Address, Address Line 2, City, County / State / Region, ZIP / Postal Code, Country dropdown menu)
- Telephone * (input field)
- Mobile * (input field)
- Email 1 * (input field)
- Email 2 (input field)
- (**NB: Please note that all booking correspondence will be sent via Email**)
- Passport no. (input field)
- Passport Issue Date (DD, MM, YYYY input fields)

AFRICA

Please communicate with us with any questions relating to the field trip.

Dear Chloe,

Thank you for choosing to book with Gap Africa Projects as part of the Karadit Collage trip to Zulu Land Conservation Research. Please take the time to look through this document and check that everything is correct.

We have received your deposit payment and your placement is now confirmed as per the details below. The final balance and due date is detailed on your invoice.

Please remember that you can contact us to discuss anything in this document as well as any other aspect of your expedition and I am on hand to support your personal travel for the entirety of your placement.

Warm regards,
The Gap Africa Team

Passengers Travelling

Milly Choe

Placement(s)

Zulu Land Conservation Research (06/03/23 - 18/05/23)

Inclusions

Flights, Shared road transfers to and from Project, accommodation for duration, all meals and all project activities.

Exclusions

Insurance, any activities undertaken that are not included as part of the project.

Your Flight(s)

05/03/2023 BA1399	03:10:00 A: 18:05	Manchester (MAN) London Heathrow (LHR)
05/04/2023 BA55	03:18:20 A: 07:25 + 1 S	London Heathrow (LHR) Johannesburg (JNB)
18/05/2023 BA66	03:20:15 A: 09:30 + 2 D	Johannesburg (JNB) London Heathrow (LHR)
19/05/2023 BA1390	03:39:15 A: 10:40	London Heathrow (LHR) Manchester (MAN)

Your Booking

Travel Advice

Names and surnames

If a name has two parts then it is printed on one passport. If there is a surname this will need to be on the passport. If there is no surname then the first name will be changed for something.

Passport expiry date

Your passport must be valid for at least 30 days before the departure date of your journey or until 6 months after the date of your return. If you have a passport which is less than 6 months old then you will need to renew it before you can travel.

Passport Copies

We will need to see your passport to take photographs of your passport documents and keep these in a secure place.

Travel Insurance

Insurance that you take out, or the appropriate travel insurance for your trip. Please remember to take the certificate and policy number to show what you need your travel. The full policy must be shown to you.

<https://www.gap-africa.com/insurance/>

+44 (0) 207 193 7919

mark.bottle@gap-africa.com

Registered in England
10114767
Registered with The Citizens Advice Bureau
Registration No: 10114767

CONFIRMATION INVOICE		Gap Africa Projects		
Musi Choe		PO Box 116 Enochang Surrey KT9 9BN United Kingdom Tel: +44 (0) 20 7323 7913 Email: info@gapaficaprosjcs.co.uk		
UK				
Date:	18/10/2022			
Invoice No:	23-KCA-CAC7-C2 (H)			
Booking Ref:	4623			
Projects, Placements, Dates Activities				
Description	CD3	Normal	Departure	
* Zulu Land Conservation Research	1	09/10/2021	18/10/2021	
Flights				
Flight No.	Date	Start Time	Arrival Time	Airport / Airport
BA1399	05/10/2021	13:00	16:00	Munich (MUN)
BA55	05/10/2021	18:30	07:25 + 1 Day	London Heathrow (LHR)
BA56	18/10/2021	20:15	05:30 + 1 Day	Johannesburg (JNB)
BA1290	19/10/2021	09:05	16:40	London Heathrow (LHR)
				Munich (MUN)
On-site Activities and Dates				
Musi Choe Capital, Gap Africa Projects is licensed under the 'Be Travel Organizer' Licensing scheme with ATOL License (10890). This trip is fully protected by this ATOL License and we will also supply an ATOL Certificate. Please visit www.atol.org.uk for more information about financial protection and the ATOL Certificate.				
Description	Date	Amount		
* Total cost of the arrangements as specified above		£	2,585.00	
* Deposit Payment		£	300.00	
	Total balance due to: Gap which is due to:	29/09/2022	£	2,285.00
		19/11/2022	£	947.50
<p>Payment Methods</p> <p>Cheques: Payable to GAP AFRICA PROJECTS LTD.</p> <p>Bank Transfer: Account No. 43089176 Sort Code: 20-40-71 Swift: BANC2123 IBAN: GB430891760000000000000000</p>				
<p>For all bank transfers, please use your surname and booking number 0463 as reference. For transfers outside of the UK, please ensure that international transfer charges are covered when making the transaction.</p>				

This is an important document. Make sure that you take it with you when you travel.

ATOL Certificate

This confirms that your money is protected by the ATOL scheme and that you can get home if your travel company collapses.

This certificate sets out how the ATOL scheme will protect the people named on it for the parts of their trip listed below.

Who is protected?

Number of passengers: 18

What is protected?

Package includes a flight to Italy on
British Airways and a hotel in Rome. The package is sold to you by
GAP Africa Projects Ltd (ATOL reference: 10586) who is acting as a
travel agent for the tour operator, GAP Africa Projects Ltd (ATOL reference: 10586).
GAP Africa Projects Ltd is a member of the ATOL scheme.

You can find more detailed information on your booking, including price, on the confirmation you will receive from Gap Africa Projects Limited.

Who is protecting your trip?

Gap Africa Projects Limited ATOL Number: 10586

Your protection

You are protected from when you were given this certificate to the end of your trip.

If Gap Africa Projects Limited stops trading, the passengers named above will either:

- complete their trip and return to the UK; or
- receive a refund.

Your protection depends on the terms of the ATOL scheme (available at www.atol.org.uk).

If Gap Africa Projects Limited stops trading, you must follow the instructions at www.atol.org.uk (where there will be details of arrangements to bring people back to the UK, and information on how people can claim their money back) or you can call +444 20 7453 6350.

By issuing this ATOL Certificate, under Regulation 17 of the Civil Aviation (Air Travel Organisms' Licensing) Regulations, 2012, Gap Africa Projects Ltd confirms that the trip to which it applies is sold to you with the ATOL, held by the organiser named above.

The ATOL scheme is run by the Civil Aviation Authority and paid for by the Air Travel Trust. To see what that is, and what you can expect, together with full information on its terms and conditions go to www.atol.org.uk.

As well as the protection of the ATOL scheme, you have protection under the Package Travel Regulations. For more information see www.direct.gov.uk in the Travel and Transport section.

Unique reference number: 4413	Date of issue: 10/10/2002	ATOL Certificate Number: Gap Africa Projects Ltd 10586	Package name: 10586
----------------------------------	------------------------------	--	------------------------

Copyright © 2002 the Aviation Authority. No part of this is to be reproduced without permission.

Click here to look up your ATOL Certificate

BOOKING YOUR ADVENTURE

AFRICA

Group Web Page

<https://gapafricaprojects.com/4598-moa/>



Booking Form

<https://gapafricaprojects.com/booking-form-25-4598-moa-kzn-moulton-college/>



BOOKING FORM

Your Global Adventure Starts here!

Please use the form below to submit your provisional booking to your selected project. You have the option to pay your initial deposit with the submission of your booking form, or we will contact you for payment once your project placement has been secured.

If you'd like to contact us to ask any initial questions or find out more about what project you'd like to go on and when, you can get also get in touch using our short enquiry form, or by calling +44 (0) 207 193 7819.

(NB: Your name should be given as displayed on your passport)

Title *

Name *

Date of birth *

Address *

Sustainability & Social, Economic Responsibility

Local employment from rural communities – our project partners employ a high percentage of staff from local communities. They advocate training to advance careers in hospitality, wildlife and conservation.

Low environmental impact camps – our project bush camps are built with minimal impact on the environment. Resources from the surrounding area are utilised for buildings, water is (where possible) pumped from local river sources and green energy supplies, such as solar are championed.

Community donations and support – we encourage all our international study groups to be proactive in donation collections and arrange for excess baggage for said donations to be taken out to South Africa in support of the local communities.

Move Africa, supporting young females – 3 in 10 girls in South Africa miss a week of school every month because they cannot afford basic sanitary products. Our project partners work with Move Africa alongside their partner NGOs, to distribute menstrual cups to the local communities and provide education workshops.

Rhino Art – Project rhino realises the enormous responsibility the youth have to ensure our wildlife is protected for many generations to come. They ensure they can reach and educate as many kids as possible through Rhino Art, using art workshops to teach about conservation. This initiative is supported by our local project partners.

Food/crop education – our project partners encourage food and crop education to rural communities, where cost of living to low income families and distance travelled to obtain basic resources can prove problematic. Projects include community allotments and providing education on best practice for crop rotations, harvest seasons and nutrition.

Recycling workshops – Litter, and in particular plastics, is a major issue and threat to the ecosystem in Southern Africa. Rural communities have limited waste removal available and it is therefore a problem escalating at an alarming rate. Recycling workshops are provided through local schools to help educate children on the importance of correctly disposing of litter and recycling plastics.



GLOBAL reach. **ADVENTURE** for all. **PROJECTS** to inspire.

Explore our network of Global Adventure Projects:



GLOBALADVENTUREPROJECTS.COM

