



PRE-DEPARTURE INFORMATION

Leeds City College



KwaZulu-Natal Community Volunteering Project



GLOBAL reach. **ADVENTURE** for all. **PROJECTS** to inspire.

TRIP OVERVIEW

AFRICA

Leeds City College – Booking Reference 4602

Trip Dates:

9th March–24th March 2025

Flights:

| Flight No | Flight Date | Dept. | Dept. Time | Arr. | Arr. Time |
|-----------|-------------|------------------------------|------------|------------------------------|---------------|
| TK1992 | 09/03/2025 | Manchester (MAN) | 14:15 | Istanbul (IST) | 21:25 |
| TK42 | 10/03/2025 | Istanbul (IST) | 01:55 | King Shaka Int: Durban (DUR) | 13:30 |
| TK43 | 24/03/2025 | King Shaka Int: Durban (DUR) | 16:05 | Istanbul (IST) | 06:20 + 1 Day |
| TK1991 | 25/03/2025 | Istanbul (IST) | 11:45 | Manchester (MAN) | 13:15 |

*Always check the flight timings on your final documents

Baggage Allowance – 1 piece of checked baggage @ 23kgs and 1 piece of hand baggage @ 8kg 55x40x23 cm max dims

Project:

KwaZulu-Natal Community Volunteering Project

ARRIVAL

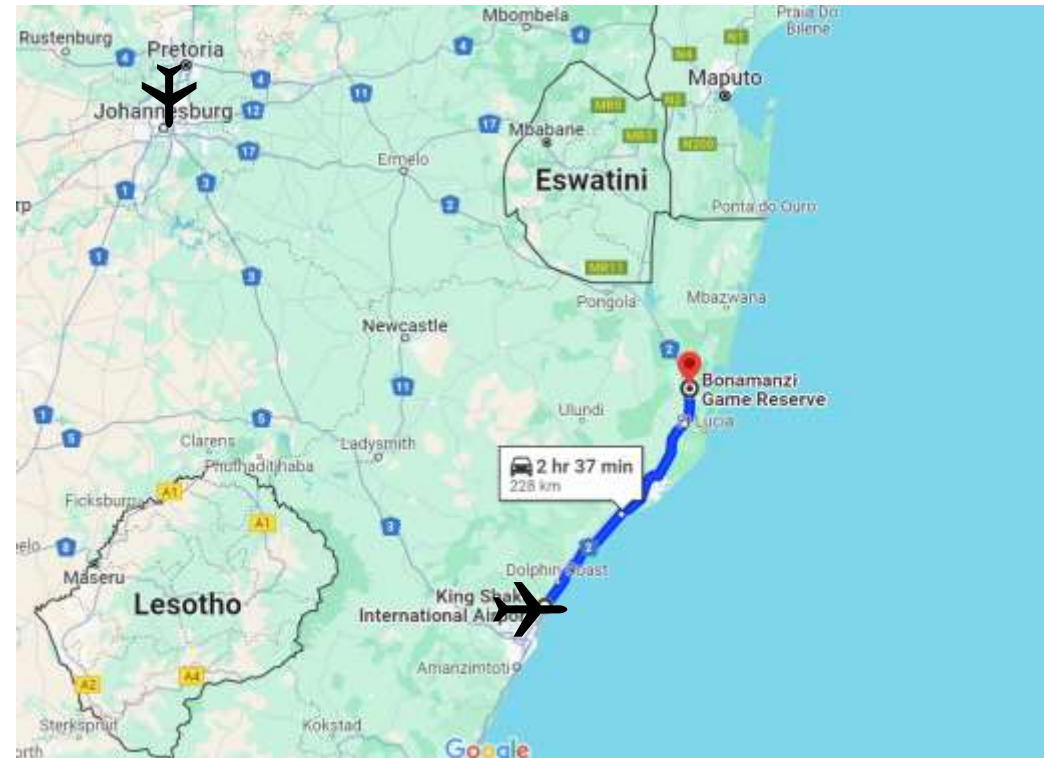
AFRICA

Arriving in South Africa

Upon arrival at Durban (King Shaka International) Airport you must collect your bags and clear immigration and customs.

A representative from Escape though Africa Travel & Tours will meet you in the arrivals hall at Durban airport for your coach transfer to Bonamanzi Game Reserve approximately 2.5 – 3 hours by road.

If for any reason you cannot locate the representative, please call Logan (Operations Manager) on 062 639 9009 or WhatsApp 084 363 185.



Contact Details

AFRICA

Address

Bonamanzi Game Reserve

324 Bushlands Road, Hluhluwe, 3960

South Africa

Tel: +27 87 821 6368

Shonalonga Lodge

37 McKenzie Street, St Lucia 3936

Tel: +27 35 590 1087

Mobile

+27(0) 81 816 2541

Lundy Bredberg (Project Manager)

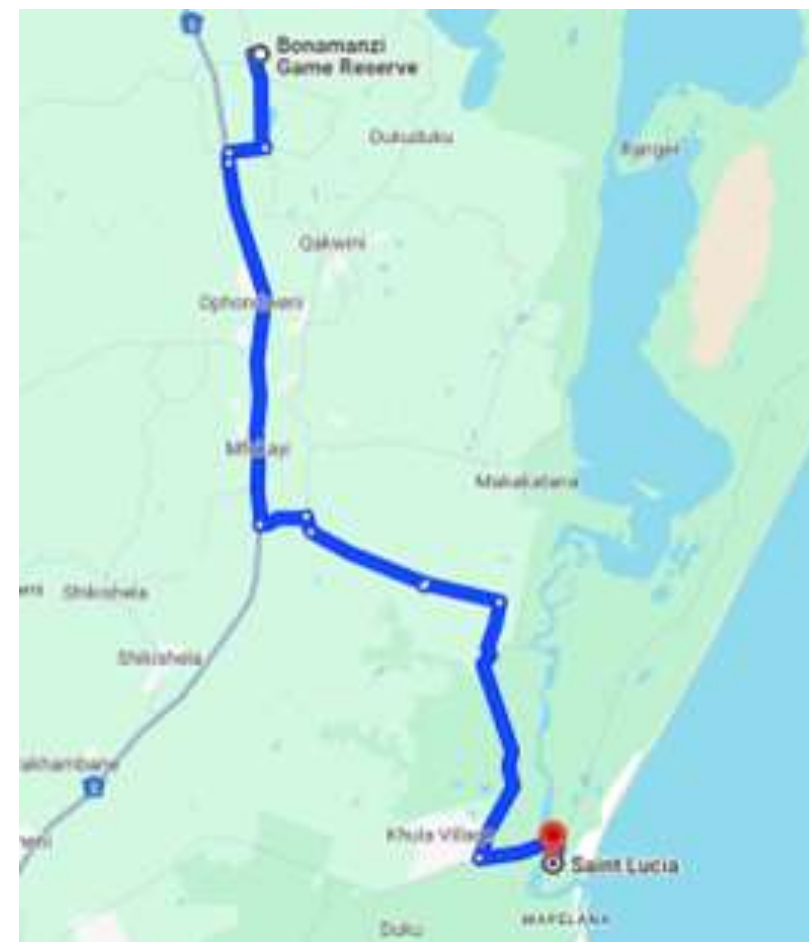
Gap Africa Projects

+44 (0) 744 260 1694

24 Hour Emergency Only

Gap Africa Projects In Country Contact:

+27 (0) 79 313 2276 Carmen Warmenhove



USEFUL INFORMATION

AFRICA

Health Risks

Immunisation:

When entering South Africa, no international immunisation is required, however, a yellow fever vaccination certificate is required from travellers if they enter South Africa within 6 days of leaving an infected country.

Our advice: Visit your local (travel) doctor to get up-to-date information about requirements when travelling.

DTP inoculation (diphtheria, tetanus and polio) is essential.

Please visit the following web page for advice from the UK Foreign Office:

<https://travelhealthpro.org.uk/country/201/south-africa>

Drinking Water:

Drinking water is available at the project (filtered rainwater); always make sure you keep hydrated.

HIV/Aids in South Africa:

As in other countries, HIV/Aids is a serious concern in South Africa and one you must be aware of. You should always be careful when dealing with an injured person to avoid the risk of infection. Always take necessary precautions and avoid sexual contact.

Sun:

South Africa has a warm sunny climate, you should wear sunscreen and a hat whenever you are out of doors during the day, particularly between 10am and 4 pm – regardless of whether there is cloud cover or not. Whatever your complexion you can still get sunburned if you are from a cooler climate. Sunglasses are also recommended as the glare of the African sun can be very strong.

Malaria:

The project is located in a low-risk malaria area

<http://www.sa-venues.com/malaria-risk-areas.htm>

USEFUL INFORMATION

AFRICA

Climate

KwaZulu-Natal is one of the cooler regions of South Africa, with an average daily high temperature of 25 C. The driest months are May to August, most rain days occur from October to January.

It can get very cold in the evenings and at night during the winter months, July being the coldest month.

Have a look at the accuweather website for more information, link below:

<https://www.accuweather.com/en/za/ladysmith>

Tipping

Whilst there is no obligation, it is a nice gesture to show your appreciation for the rangers and housekeeping staff by leaving a small tip/donation for the staff when you leave; any amount is always appreciated.

10% is the norm in cafes and restaurants.

Currency & Credit Cards

The currency for South Africa is the South African Rand (ZAR). Foreign exchange may be arranged at the airport or in major centres. It is not recommended that travellers carry large sums of cash, keep a reasonable amount on hand and primarily use credit cards.

All major credit cards are widely accepted in main towns, although local communities only take cash.

Wise Travel Card offers up to £500.00 with no transfer fee for Gap Africa Project travellers:



<https://wise.prf.hn/l/XZJx9qq>

USEFUL INFORMATION

AFRICA

Phones & Internet

There is good mobile reception at Bonamanzi and WiFi at Bundu Camp. Mobile and WiFi are good at St. Lucia. We have partnered with Holafly, an eSim provider who have offered a 5% discount when you use the code GAPAFRICAPROJECTS

Benefits of an eSIM

- Unlimited Data Plans
- Keep your WhatsApp number
- Immediate Delivery
- Uses both Vodacom and MTN the two major networks in South Africa

Holafly



<https://holafly.sjv.io/APK5yR>

-5% discount applied to all plans

| | | |
|---|---|---|
| 5 Days Unlimited data £22.80 £24.00 GBP 5% | 7 Days Unlimited data £32.30 £34.00 GBP 5% | 10 Days Unlimited data £35.15 £37.00 GBP 5% |
| 15 Days Unlimited data £37.05 £39.00 GBP 5% | 20 Days Unlimited data £46.55 £49.00 GBP 5% | 30 Days Unlimited data £63.65 £67.00 GBP 5% |

USEFUL INFORMATION

AFRICA

Insurance

Personal travel insurance is compulsory. Travel insurance does not need to be expensive and there are many good deals available for backpackers etc. Always be sure to check the insurance details to make sure you are covered for Covid 19, theft, loss, illness and injury. Check to see if your medical benefits are paid out as they occur or on your return home.

We have an affiliation with True Traveller Insurance, please see link below for further information:

<https://www.true Traveller.com/backpackers-insurance?tag=4480>

You should select 'Adventure Pack' as this will cover you for the type of activities you will undertake during your trip



Stay safe overseas – KBYG

The better prepared you are when you travel abroad the safer you will be. The Foreign, Commonwealth and Development Office offers 'Know Before You Go' travel advice, including simple precautions you can take before and during your trip.

To find out more, check out their website:

<https://www.gov.uk/browse/abroad/travel-abroad>

Passport Requirements

It can take many weeks to obtain a passport – remember to start this process in plenty of time.

Your passport needs to be valid for at least 30 days beyond your intended exit date and have at least two blank pages. You can check requirements by using the IATA Travel Centre site www.iatatravelcentre.com

Visa Requirements

A visa is not required for British Passport holders, all other nationalities should check the requirements via the website below, if required a visa can be obtained from the South African High Commission.

<http://www.dha.gov.za/index.php/immigration-services/exempt-countries>

ACCOMMODATION & LIFESTYLE

AFRICA

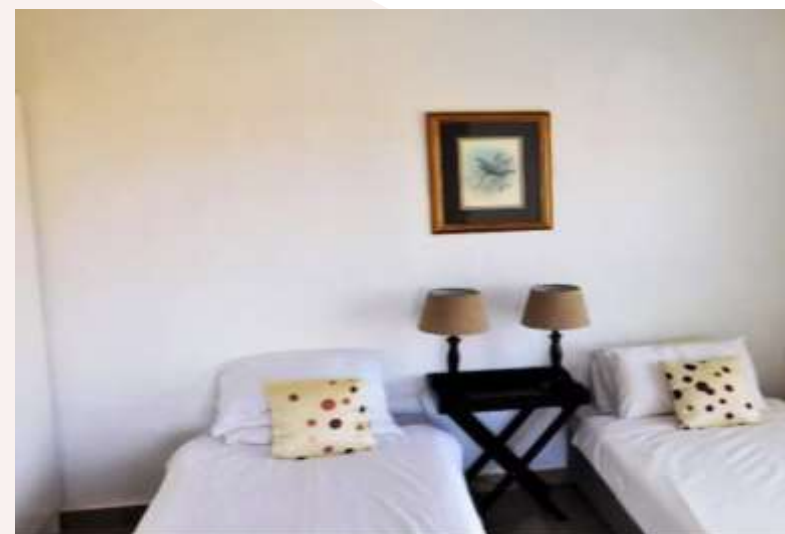
Bundu Camp

You will be accommodated in twin rooms, 2 rooms share bathroom facilities of shower, toilet and basin.

There is a communal fully equipped kitchen and living area. There isn't a washing machine, but clothes can be hand washed.

Three meals a day are provided by the cook. On one evening a Potjie competition will be held so everyone gets involved! Please remember to advise us of any dietary requirements so we can ensure you are adequately catered for

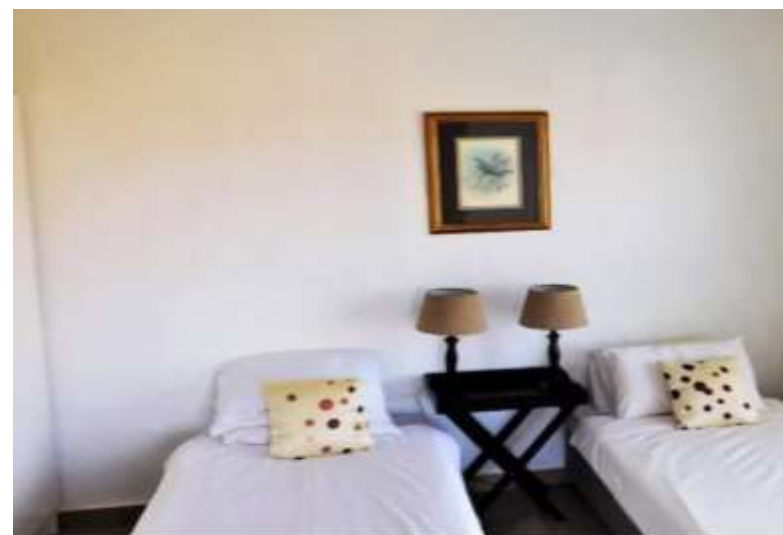
The camp faces East, with a view over False Bay and the iSimangaliso Wetlands.



ACCOMMODATION & LIFESTYLE

AFRICA

Bundu Camp



ANY QUESTIONS?

INFO@GAPAFRICAPROJECTS.COM | +44 (0)207 1937819

Pre-Departure Presentation 10

ACCOMMODATION & LIFESTYLE

AFRICA

Bundu Camp



ANY QUESTIONS?

INFO@GAPAFRICAPROJECTS.COM | +44 (0)207 1937819

Pre-Departure Presentation 11

ACCOMMODATION & LIFESTYLE

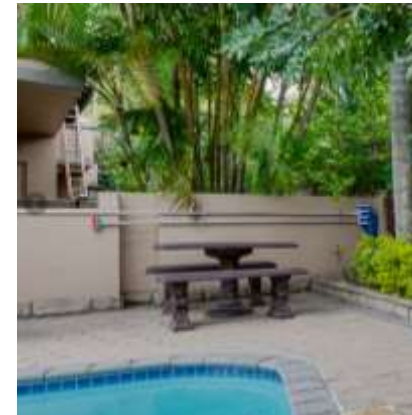
AFRICA

St Lucia

You will be accommodated in twin rooms with ensuite facilities at St Lucia.

3 meals per day will be provided at the accommodation. Please remember to advise us of any dietary requirements so we can ensure you are adequately catered for.

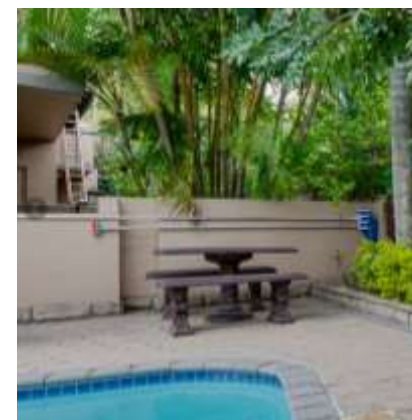
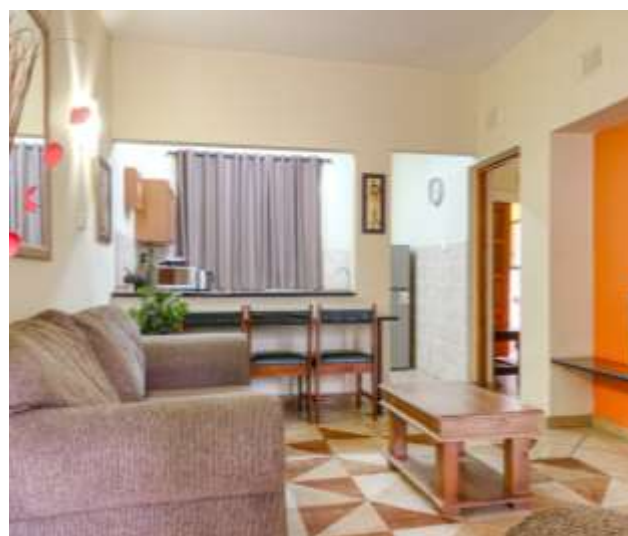
There are no facilities for washing clothes at the accommodation but there are launderettes nearby which are not expensive



ACCOMMODATION & LIFESTYLE

AFRICA

St Lucia



ANY QUESTIONS?

INFO@GAPAFRICAPROJECTS.COM | +44 (0)207 1937819

Pre-Departure Presentation 13

USEFUL INFORMATION

AFRICA

Suggested kit list

- Short sleeve shirts
- Long work trousers and shorts
(Or work trousers with zip-off longs)
- T shirts
- Hiking Boots/comfortable walking shoes to work in every day
- Rain jacket
- Sweatshirt/Fleece (Winter months pack plenty)
- Padded parka jacket/windbreaker - (it can get very cold on an open vehicle - even on a summer evening)
- Daypack rucksack
- Socks
- Hat for sun protection / Warm Hat (winter only)
- Working gloves
- Gloves for warmth (winter only)
- Changes of casual clothes for evenings
- Underwear

- Sandals / comfy shoes to wear after work hours
- Beach towel
- Swimming costume
- Toiletries
- Tick / insect repellent
- Personal medical items & First Aid Kit
- Binoculars
- Sunscreen & Sunglasses
- Water bottle

Other useful items:

- Good torch
- Camera
- Spare batteries
- Mammal/bird book
- Notebook/diary and pen

WHAT'S INCLUDED

AFRICA

What is included?

- Flights
- Transfers to/from project
- Accommodation
- Three meals per day
- All activities as part of the project
- ATOL protection
- Airport meet/greet
- 24/7 In country support



NOT Included

- Personal Travel Insurance *
- Meals on travel days – before arriving & after departing from project
- Any activities not specified as part of the project
- Visa's/travel documents
- Tips

* We recommend that you take out personal travel insurance as soon as your booking is confirmed.



GLOBAL reach. **ADVENTURE** for all. **PROJECTS** to inspire.

Explore our network of Global Adventure Projects:



GLOBALADVENTUREPROJECTS.COM

