



# Duchy College – Stoke Climsland Group Presentation



## Sibuya Conservation Experience

**AFRICA**

**GLOBAL** reach. **ADVENTURE** for all. **PROJECTS** to inspire.



**AFRICA**

# **ABOUT THE PROJECT**

Our conservation work  
in more detail



# ABOUT SIBUYA GAME RESERVE

AFRICA

## Your Conservation Field Trip Explained

- **A unique conservation experience based in South Africa**
- **Live on a Wild African Game Reserve**
- **The opportunity to experience hands on wildlife conservation**
- **Working behind the scenes on a Game Reserve in Africa**
- **Tailor made projects to suit your needs and interests**
- **Project Activities include:**
  - Pioneering Conservation Research
  - Conservation Activities
  - Coastal and River Activities
- **All inclusive experience**
- **The most incredible wildlife experience you will ever have**

# ABOUT SIBUYA GAME RESERVE

AFRICA

## Sibuya Game Reserve Location



ANY QUESTIONS?

[INFO@GAPAFRICAPROJECTS.COM](mailto:INFO@GAPAFRICAPROJECTS.COM) | +44 (0)207 1937819

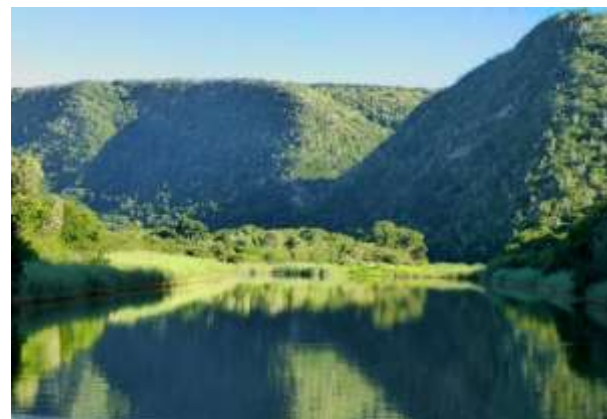
INFORMATION PACK 4



# ABOUT SIBUYA GAME RESERVE

AFRICA

## Stunning River Reserve



ANY QUESTIONS?

[INFO@GAPAFRICAPROJECTS.COM](mailto:INFO@GAPAFRICAPROJECTS.COM) | +44 (0)207 1937819

INFORMATION PACK 5



# ABOUT SIBUYA GAME RESERVE

AFRICA

Home to the **BIG 5**



ANY QUESTIONS?

[INFO@GAPAFRICAPROJECTS.COM](mailto:INFO@GAPAFRICAPROJECTS.COM) | +44 (0)207 1937819

INFORMATION PACK 6



# ABOUT SIBUYA GAME RESERVE

AFRICA

Home to over 45 Species of Mammal



ANY QUESTIONS?

[INFO@GAPAFRICAPROJECTS.COM](mailto:INFO@GAPAFRICAPROJECTS.COM) | +44 (0)207 1937819

INFORMATION PACK 7



# ABOUT THE PROJECT

AFRICA

## Many Reptile, Insect and Bird Species







**AFRICA**

# ABOUT THE PROJECT

Our conservation work in more detail



# ABOUT SIBUYA GAME RESERVE

AFRICA

## What is a Game Reserve?

- A game reserve is a large area of protected land where wild animals can live safely.
- Wildlife is free roaming throughout the reserve allowing them to thrive in their natural habitat.
- Reserves are either Government Owned (National Parks) or Privately Owned/Managed.
- Most reserves will have physical boundaries i.e. electrified fence line.
- Due to physical boundaries, wildlife must be managed due to restraints on population growth, migration and resources.
- Wildlife is protected but also utilised as a tourist attraction (Eco Tourism) which creates funding for conservation efforts and research.





## Your Conservation Programme

- **Lion monitoring**
- **Elephant monitoring**
- **Rhino monitoring**
- **Ocean Research Institute fish tagging**
- **Fencing and Alien Plant clearing**
- **Community Outreach**
- **Possible Veterinary Interventions**
- **Coastal Dunes and Rocky Shores**
- **Kayak Expedition 15km**
- **Pitfall trap insect collection and Identification**
- **Starry Night Constellation Observation**
- **SANCCOB visit**

## Presentations and Talks on:

- **Lion Conservation**
- **Elephant Ecology**
- **Rhino Conservation**
- **Ornithology (Birds)**



# ABOUT THE PROJECT

AFRICA

## Research – Elephant Monitoring



ANY QUESTIONS?

[INFO@GAPAFRICAPROJECTS.COM](mailto:INFO@GAPAFRICAPROJECTS.COM) | +44 (0)207 1937819

INFORMATION PACK 12



# ABOUT THE PROJECT

AFRICA

## Research – Rhino Tracking



ANY QUESTIONS?

[INFO@GAPAFRICAPROJECTS.COM](mailto:INFO@GAPAFRICAPROJECTS.COM) | +44 (0)207 1937819

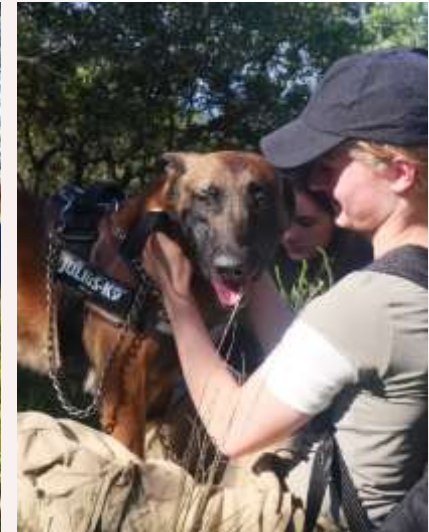
PRE DEPARTURE INFORMATION 13



# ABOUT THE PROJECT

AFRICA

## Anti - Poaching



ANY QUESTIONS?

[INFO@GAPAFRICAPROJECTS.COM](mailto:INFO@GAPAFRICAPROJECTS.COM) | +44 (0)207 1937819

PRE DEPARTURE INFORMATION 14



# ABOUT THE PROJECT

AFRICA

## Research – Habitat and Prey Selection: Predators



ANY QUESTIONS?

[INFO@GAPAFRICAPROJECTS.COM](mailto:INFO@GAPAFRICAPROJECTS.COM) | +44 (0)207 1937819

INFORMATION PACK 15



# ABOUT THE PROJECT

AFRICA

## Reserve Maintenance



ANY QUESTIONS?

[INFO@GAPAFRICAPROJECTS.COM](mailto:INFO@GAPAFRICAPROJECTS.COM) | +44 (0)207 1937819

PRE DEPARTURE INFORMATION 16



# ABOUT THE PROJECT

AFRICA

## Camera Trap – Research and Study





# ABOUT THE PROJECT

AFRICA

## Night Game Drives



ANY QUESTIONS?

[INFO@GAPAFRICAPROJECTS.COM](mailto:INFO@GAPAFRICAPROJECTS.COM) | +44 (0)207 1937819

INFORMATION PACK 18



# ABOUT THE PROJECT

AFRICA

## Possible Veterinary Interactions



ANY QUESTIONS?

[INFO@GAPAFRICAPROJECTS.COM](mailto:INFO@GAPAFRICAPROJECTS.COM) | +44 (0)207 1937819

PRE DEPARTURE INFORMATION 19



# ABOUT THE PROJECT

AFRICA

## Ocean Research Institute Fish Tagging



ANY QUESTIONS?

[INFO@GAPAFRICAPROJECTS.COM](mailto:INFO@GAPAFRICAPROJECTS.COM) | +44 (0)207 1937819

PRE DEPARTURE INFORMATION 20



# ABOUT THE PROJECT

AFRICA

## Alexandria Dune Trail 7km & Coastal Dunes and Rocky Shores



ANY QUESTIONS?

[INFO@GAPAFRICAPROJECTS.COM](mailto:INFO@GAPAFRICAPROJECTS.COM) | +44 (0)207 1937819

PRE DEPARTURE INFORMATION 21



# ABOUT THE PROJECT

AFRICA

## River Activities



ANY QUESTIONS?

[INFO@GAPAFRICAPROJECTS.COM](mailto:INFO@GAPAFRICAPROJECTS.COM) | +44 (0)207 1937819

PRE DEPARTURE INFORMATION 22



# ABOUT THE PROJECT

AFRICA

## Community Engagement Days



ANY QUESTIONS?

[INFO@GAPAFRICAPROJECTS.COM](mailto:INFO@GAPAFRICAPROJECTS.COM) | +44 (0)207 1937819

PRE DEPARTURE INFORMATION 23



# ABOUT THE PROJECT

AFRICA

## Community – GAP Donation Bags



ANY QUESTIONS?

[INFO@GAPAFRICAPROJECTS.COM](mailto:INFO@GAPAFRICAPROJECTS.COM) | +44 (0)207 1937819

PRE DEPARTURE INFORMATION 24



## Sample Itinerary

### Week 1

Day 1: Arrival and settling into accommodation

Day 2: Welcome presentation, elephant monitoring, elephant conservation talk, camera trap set up

Day 3: Rhino conservation talk, rhino monitoring

Day 4: Fence management, alien plant removal, Bird count, ornithology presentation

Day 5: Community outreach (delivering dog food), town trip

Day 6-7: Leisure time/adventure activities

### Week 2:

Day 8 Lion conservation presentation, lion monitoring, buffalo management

Day 9: Alexandria Dune Trail, rocky shore practical

Day 10: Fish Tagging, Boat cruise

Day 11: Wildlife monitoring drive and picnic

Day 12: Camera trap collections and farewell dinner

Day 13: Team breakfast and depart





# OPTIONAL WEEKEND EXCURSIONS

AFRICA



Weekend Options  
will be sent in  
advance of your  
departure.

Pre-Booked or  
Paid Locally







**AFRICA**

# **ACCOMMODATION & LIFESTYLE**

Life in the African Bush



# ACCOMMODATION & LIFESTYLE

AFRICA

## Sibuya – River Camp

Together with the team, the group will be accommodated and hosted at the beautiful River Camp. Happy chilled vibes.

Participants will share comfortable four bedded rooms with en-suite bathrooms, including full board (3 meals a day).





# ACCOMMODATION & LIFESTYLE

AFRICA

## RIVER CAMP



ANY QUESTIONS?

[INFO@GAPAFRICAPROJECTS.COM](mailto:INFO@GAPAFRICAPROJECTS.COM) | +44 (0)207 1937819

INFORMATION PACK 29



# ACCOMMODATION & LIFESTYLE

AFRICA

## RIVER CAMP



ANY QUESTIONS?

[INFO@GAPAFRICAPROJECTS.COM](mailto:INFO@GAPAFRICAPROJECTS.COM) | +44 (0)207 1937819

INFORMATION PACK 30



# ACCOMMODATION & LIFESTYLE

AFRICA

## Life on the Reserve



ANY QUESTIONS?

[INFO@GAPAFRICAPROJECTS.COM](mailto:INFO@GAPAFRICAPROJECTS.COM) | +44 (0)207 1937819

PRE DEPARTURE INFORMATION 31



# ACCOMMODATION & LIFESTYLE

AFRICA

## Life on the Reserve



ANY QUESTIONS?

[INFO@GAPAFRICAPROJECTS.COM](mailto:INFO@GAPAFRICAPROJECTS.COM) | +44 (0)207 1937819

PRE DEPARTURE INFORMATION 32



# ACCOMMODATION & LIFESTYLE

AFRICA

## A true life experience



ANY QUESTIONS?

[INFO@GAPAFRICAPROJECTS.COM](mailto:INFO@GAPAFRICAPROJECTS.COM) | +44 (0)207 1937819

PRE DEPARTURE INFORMATION 33



# ACCOMMODATION & LIFESTYLE

AFRICA

## A true life experience



ANY QUESTIONS?

[INFO@GAPAFRICAPROJECTS.COM](mailto:INFO@GAPAFRICAPROJECTS.COM) | +44 (0)207 1937819

PRE DEPARTURE INFORMATION 34



# WHY SHOULD I TRAVEL?

AFRICA

## What do previous students say about Sibuya



"It was the most **amazing** experience I've ever had."



"I learnt so many new things that have **educated** me **beyond** classroom curriculum"



"There wasn't a single experience that didn't **amaze** me and make me feel **enriched**."

Reference: GAP Africa Projects Post Project Trip Questionnaire 23/24



# WHY SHOULD I TRAVEL?

AFRICA

## What do previous students say about Sibuya



“Being able to learn more about the animals on the game reserve and understand more about the risks that the animals face”



“Tagging a rhino was the most engaging as I got to actually engage, the talks about poaching were very insightful”



“Our guide was **amazing**, we got the **opportunity** to take part in talks and demonstrations by APU”

Reference: GAP Africa Projects Post Project Trip Questionnaire 23/24



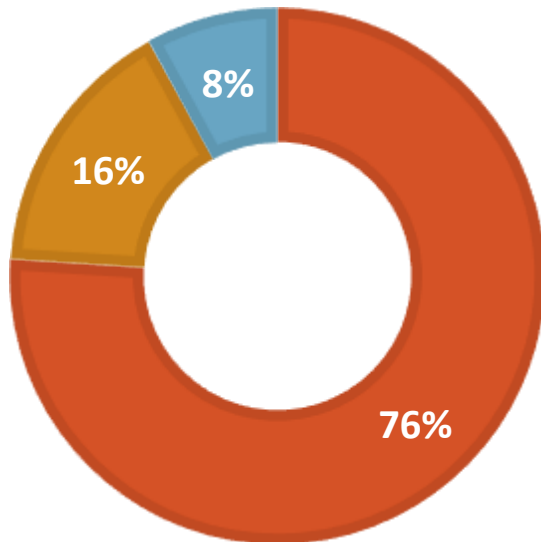
# WHY SHOULD I TRAVEL?

AFRICA

## Personal Development

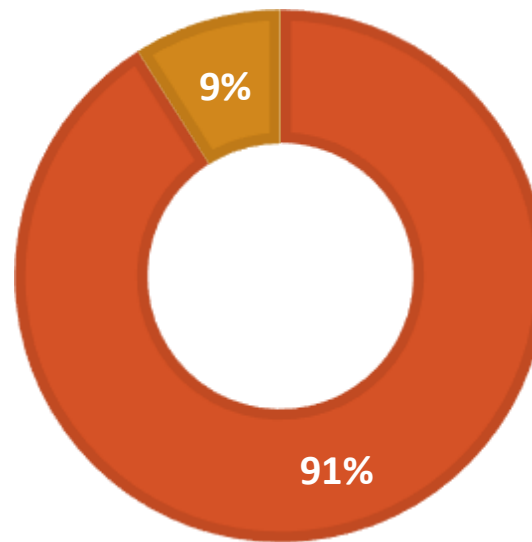
### MENTAL HEALTH IMPROVEMENT

■ Yes ■ No ■ NA



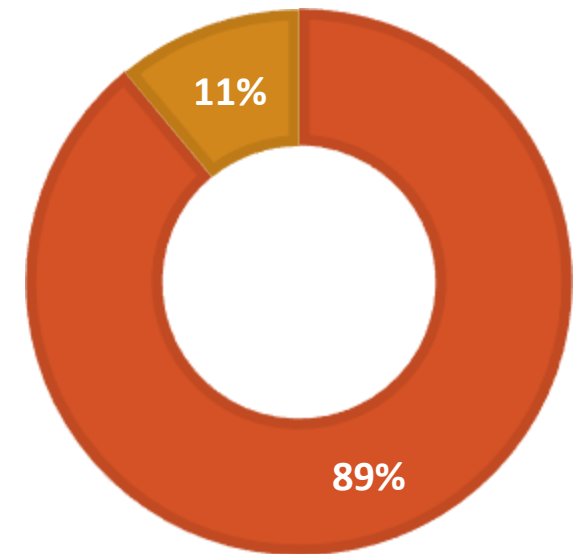
### CONFIDENCE IMPROVEMENT

■ Yes ■ No



### RESILIENCE IMPROVEMENT

■ Yes ■ No



Reference: GAP Africa Projects Post Project Trip Questionnaire 23/24





**AFRICA**

# **BOOKING YOUR ADVENTURE**

The next steps to the trip of a  
lifetime!



# BOOKING YOUR ADVENTURE

AFRICA

## Dates & key deadlines

2025 trip dates are:

**Depart UK: 22<sup>nd</sup> June | Arrive SA: 23<sup>rd</sup> June 2025**

**Depart SA: 5<sup>th</sup> July | Arrive UK: 6<sup>th</sup> July 2025**



## Trip cost:

**£2,695.00** est. based on a group of 18 students

## Key deadlines are:

- Return of booking forms by **11/11/2024**
- Deposit payment of £300 to confirm placement
- Instalment payment of 50% due **03/03/2025**
- Balance payment due **28/04/2025**
- Payment schedule available to help manage finances
- E tickets will be issued 2 weeks prior to departure and emailed to students



# WHAT'S INCLUDED

AFRICA

## What is included?

- Flights (LHR – PLZ with BA)
- Transfers to/from project
- Accommodation
- Three meals per day
- All activities as part of the project
- ATOL protection
- Airport meet/greet
- 24/7 In country support

## NOT Included

- Personal Travel Insurance \*
- Meals on travel days – before arriving & after departing from project
- Any activities not specified as part of the project
- Visa's/travel documents
- Tips

\* We recommend that you take out personal travel insurance as soon as your booking is confirmed.





# THE NEXT STEPS

AFRICA

## Confirmation Documents

Confirmation documents will be issued and sent directly to you via email.

Please communicate with us with any questions relating to the field trip.

**Your Booking**

**Travel Advice**

**Names and surnames**

**Passport expiry date**

**Passport Copies**

**Travel Insurance**

**Passengers Travelling**

**Your Flight(s)**

FLIGHT	CLASS	FARE BASIS	CARRIER	CLASS	FARE BASIS
BA1234	Y	Y	BA	Y	Y
BA5678	Y	Y	BA	Y	Y
BA9101	Y	Y	BA	Y	Y
BA2345	Y	Y	BA	Y	Y

**CONFIRMATION INVOICE**

**Total Land Contribution Revenue**

Item	Amount
Land Contribution	1000.00
Other Revenue	500.00
<b>Total</b>	<b>1500.00</b>

**Flight(s)**

Flight No.	Class	Fare Basis	Carrier	Class	Fare Basis
BA1234	Y	Y	BA	Y	Y
BA5678	Y	Y	BA	Y	Y
BA9101	Y	Y	BA	Y	Y
BA2345	Y	Y	BA	Y	Y

**ATOL Certificate**

**Who is protected?**

Name	Number of passengers
Miss Chion	1

**What is protected?**

**Your protection**

Item	Amount
ATOL Certificate Fee	10.00
Other Fees	5.00
<b>Total</b>	<b>15.00</b>



# BOOKING YOUR ADVENTURE

AFRICA

## Booking Form

A screenshot of the GAP Africa Projects website's booking form. The header features a banner with a lion and a cheetah, and the text 'GAP AFRICA PROJECTS'. Below the banner, the form is titled 'BOOKING FORM' and includes the following fields: 'Title \*', 'Name \*', 'Date of birth \*', 'Passport No.', 'Passport Issue Date', 'Passport Expiry Date', 'Nationality of Passport', 'Next of Kin Details' (with sub-fields for 'Full name \*', 'Relationship \*', and 'Contact Telephone (Do not enter +44 for UK numbers)'), and a final field for 'Please provide details of any dietary requirements \*'. The form is presented on a white background with a light grey border.

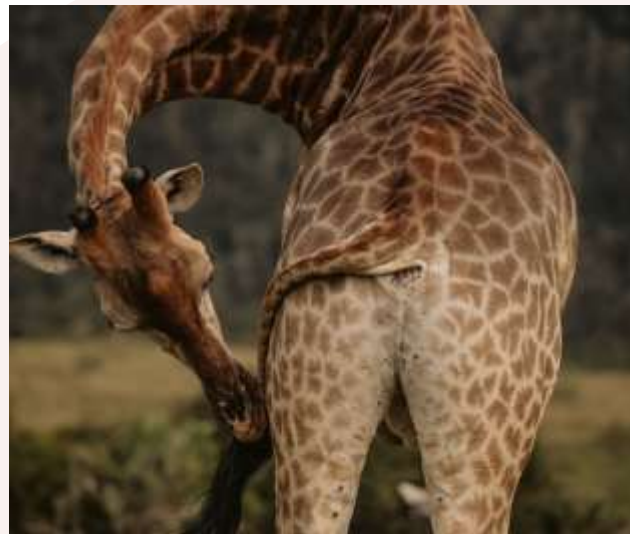
[gapafricaprojects.com/booking-form-25-4649-dsc-sib-duchy-college/](https://gapafricaprojects.com/booking-form-25-4649-dsc-sib-duchy-college/)



# PHOTO GALLERY

AFRICA

## Sibuya Wilderness Experience



ANY QUESTIONS?

[INFO@GAPAFRICAPROJECTS.COM](mailto:INFO@GAPAFRICAPROJECTS.COM) | +44 (0)207 1937819

PRE DEPARTURE INFORMATION 43





**GLOBAL** reach. **ADVENTURE** for all. **PROJECTS** to inspire.

Explore our network of Global Adventure Projects:



[GLOBALADVENTUREPROJECTS.COM](http://GLOBALADVENTUREPROJECTS.COM)

