



Northumberland College Project Presentation



KwaZulu-Natal Wildlife and Veterinary Project



GLOBAL reach. **ADVENTURE** for all. **PROJECTS** to inspire.

ABOUT US:

AFRICA

GAP Africa Projects

- We are a specialised travel company that offers academic trips and volunteering opportunities for groups and individual travellers, in a number of locations worldwide
- We pride ourselves on curating experiences which are personalised to your needs and requirements
- Our first project travelled in 2010
- Full ATOL Bonding
- Working with over 50 Colleges and Universities around the UK
- A small dedicated team in the UK and South Africa.





AFRICA

KWAZULU-NATAL PROJECT OVERVIEW

Overview and location
of the project

ABOUT THE PROJECT

AFRICA

Your Conservation Field Trip Explained

- A unique academic conservation experience based in South Africa
- Live and work in the wild of Africa
- The opportunity to experience hands on wildlife conservation
- Bespoke, tailor made projects to suit research requirements
- Project Activities include:
 - Pioneering Conservation Research
 - Conservation Activities
 - Cultural Enrichment
- Full 12 nights in South Africa
- All-inclusive experience
- The most incredible wildlife experience you will ever have

ABOUT THE PROJECT

AFRICA

What is a Game Reserve?

- A game reserve is a large area of protected land where wild animals can live safely.
- Wildlife is free roaming throughout the reserve allowing them to thrive in their natural habitat.
- Reserves are either Government Owned (National Parks) or Privately Owned/Managed.
- Most reserves will have physical boundaries i.e. electrified fence line.
- Due to physical boundaries, wildlife must be managed due to restraints on population growth, migration and resources.
- Wildlife is protected but also utilised as a tourist attraction (Eco Tourism) which creates funding for conservation efforts and research.





AFRICA

ABOUT THE PROJECT

Our conservation work
in more detail

ABOUT THE PROJECT

AFRICA

KwaZulu-Natal Conservation Research

Our academic team and qualified rangers at the KwaZulu-Natal Conservation Research Project offer a bespoke course to each institution dependent on their own personal objectives and learning needs.

We set out the basis of the trip, comprising of a 12-day academic module split between the two conservation reserves

This is not a Safari Holiday!



A full day will be planned but will vary from day to day depending on the days task and research goals.

The project split and duration are as follows:

12 Day Itinerary

Days 1 – 6

Nambiti Big 5 Conservation Research

Days 6 – 12

Zingela Wilderness Conservation and Adventure Activities



ABOUT THE PROJECT

AFRICA

KwaZulu-Natal Conservation Research Project- Location





AFRICA

6 Days at Nambiti Game Reserve

A Big Five Game Reserve

ABOUT THE PROJECT

AFRICA

Nambiti Game Reserve

Nambiti Game Reserve is a magnificent 23,000 acres of unspoiled wilderness boasting the Big 5 and incredible biodiversity (grasslands, riverine bush, savannah and thornveld) offering unprecedented diversity of wildlife.



ABOUT THE PROJECT

AFRICA

Home to over 40 Species of Mammal



ANY QUESTIONS?

INFO@GAPAFRICAPROJECTS.COM | +44 (0)207 1937819

Presentation 11

ABOUT THE PROJECT

AFRICA

Many Reptile, Insect and Bird Species



ANY QUESTIONS?

INFO@GAPAFRICAPROJECTS.COM | +44 (0)207 1937819

Presentation 12

YOUR PROJECT

AFRICA

Your Conservation Programme – Nambiti

Students will be taught and work alongside the field guides and conservation team. The following examples depict the day-to-day activities that may be undertaken as part of the project at Nambiti.

- Alien Vegetation Control / Reserve Maintenance
- Use of Telemetry Tracking
- Elephant Monitoring / Population Study
- Rhino Monitoring – Awareness
- Anti-poaching talk and fence walk
- Camera Trapping
- Night Drive
- Big Five Bush Walk
- Habitat and Prey Selection of Predators
- Tracks, Signs and Spoor
- Community Development



NAMBITI GAME RESERVE

AFRICA

Nambiti Research Team



ANY QUESTIONS?

INFO@GAPAFRICAPROJECTS.COM | +44 (0)207 1937819

Presentation 14

NAMBITI GAME RESERVE

AFRICA

Use of Telemetry Tracking



NAMBITI GAME RESERVE

AFRICA

Ecology Trails: Tracks, signs and spoors



ANY QUESTIONS?

INFO@GAPAFRICAPROJECTS.COM | +44 (0)207 1937819

Presentation 16

NAMBITI GAME RESERVE

AFRICA

Big Five Bush Walk



ANY QUESTIONS?

INFO@GAPAFRICAPROJECTS.COM | +44 (0)207 1937819

Presentation 17

ABOUT THE PROJECT

AFRICA

Research – Habitat and Prey Selection: Predators

Focus on Lion and Cheetah populations:

GPS coordinates from tracking collars

Can be used for movement/spatial/home range analysis



Wildlife Monitoring – Elephant Impact Assessment

Research into impact of elephant on the eco system:

Matriarch collared so GPS range data available

Herd population data

Elephant impact assessments from February '23

Long term ongoing project looking at elephant impact on vegetation



NAMBITI GAME RESERVE

AFRICA

Rhino Monitoring – Awareness and Anti-Poaching



ANY QUESTIONS?

INFO@GAPAFRICAPROJECTS.COM | +44 (0)207 1937819

Presentation 20

NAMBITI GAME RESERVE

AFRICA

Camera Trap – Research and Study

Set out own camera traps

Learn about correct placement, best location etc

Never know what we'll find!



NAMBITI GAME RESERVE

AFRICA

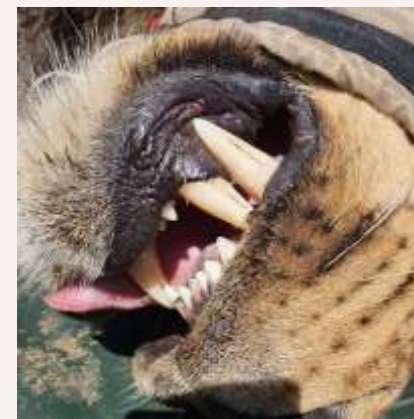
Night Game Drives



Veterinary Interactions

As part of the program, students will have the unique opportunity to interact with a local wildlife veterinarian who plays an integral role in the overall management of the game reserve.

The highlight of this experience will be the potential for a planned wildlife intervention, where students can observe and, where appropriate, assist in the treatment or management of an animal.



NAMBITI GAME RESERVE

AFRICA

Community Projects & Zulu Culture

Learn about traditional Zulu culture

Community engagement essential for longterm conservation

Positive impact supporting not for profit initiatives

Projects: Move Africa, Jabong Hats & Rhino Art



ABOUT THE PROJECT

AFRICA

Community – GAP Donation Bags



ANY QUESTIONS?

INFO@GAPAFRICAPROJECTS.COM | +44 (0)207 1937819

Presentation 25



AFRICA

6 Days at Zingela Nature Reserve

River Research and Adventure

Your Conservation Programme – Zingela

Students will be taught and work alongside the field guides and scientific team. The following examples depict the day-to-day activities that may be undertaken as part of the project at Zingela Reserve.

- Spatial Distribution and Habitat use of species
- Use of Telemetry Tracking
- Giraffe migration and Conservation Project
- Reptile pit fall traps
- Freshwater Ecology
- Mini SASS
- Fish Tagging
- Bird Ringing
- Educational Bush Walks – Ecology & Botany
- Tracks, Signs and Spoor
- Community Development
- Camera Trapping and data processing



ABOUT THE PROJECT

AFRICA

Zingela River Safari

Zingela Wildlife Reserve covers 12,500 acres of predator free, pristine African bushveld. You will have the opportunity to be involved with the research that takes place at the property;. You will also have the chance to participate in a host of activities during your stay.



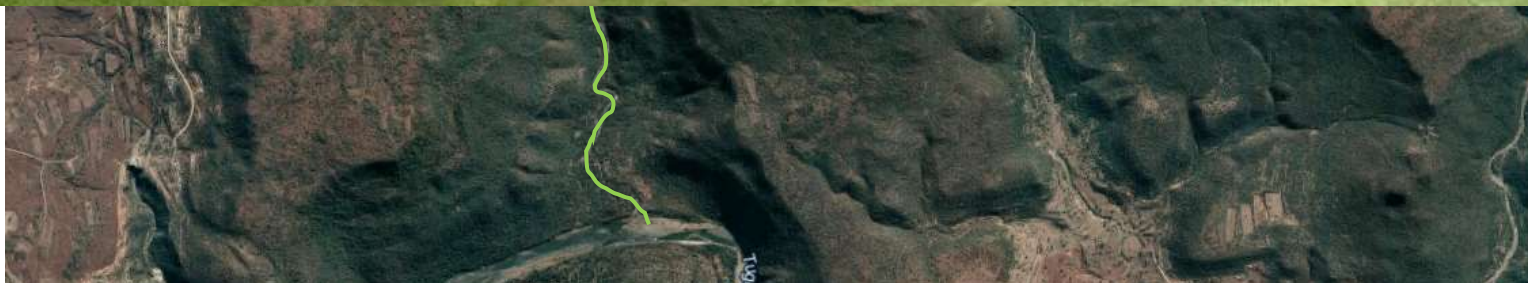
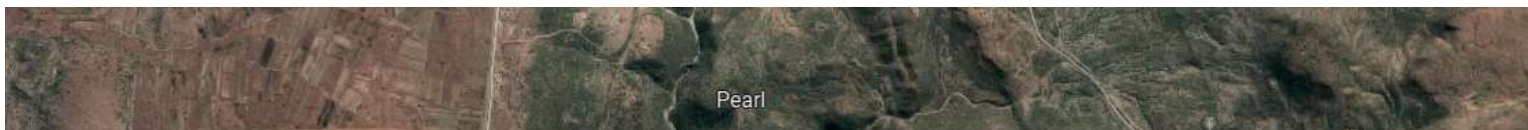
ANY QUESTIONS?

INFO@GAPAFRICAPROJECTS.COM | +44 (0)207 1937819

Presentation 28

NAMBITI TO ZINGELA

AFRICA



ANY QUESTIONS?

INFO@GAPAFRICAPROJECTS.COM | +44 (0)207 1937819

Presentation 29

Giraffe Migration and Research Project

Population data and database for individuals

Migration and range data through unfenced territories

Diet and vegetation impact assessment

Genetic diversity



River Assessments

Fresh water eel project –
understanding life cycle using GPS
data

Fish tagging and release

Collecting biometric data

SASS – South African Scoring System



ZINGELA WILDERNESS RESERVE

AFRICA

Reptile Research and Trapping

Data collection started in 2022 with annual projects planned

Species frequency

Herpetofauna succession during vegetation rehabilitation

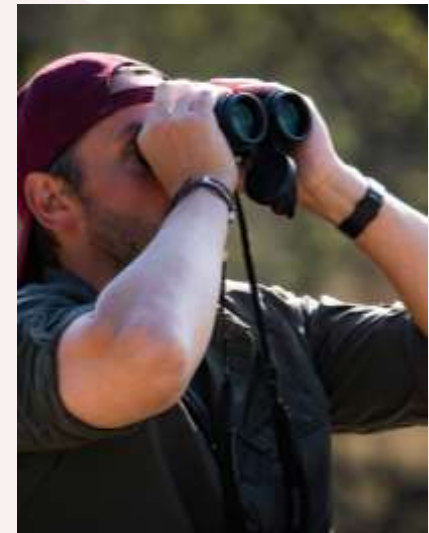
Comparing herpetological diversity



ZINGELA WILDERNESS RESERVE

AFRICA

Educational Bush Walks – Ecology and Botany



ANY QUESTIONS?

INFO@GAPAFRICAPROJECTS.COM | +44 (0)207 1937819

Presentation 33

Animal Welfare Outreach Program

Participants will join the camp's in-house veterinarian to assist local Zulu farmers in caring for their livestock, primarily goats, but also including dogs, cats, sheep, and cattle, depending on the participants' qualifications and experience.

Vaccinating and Caring for Local Farmers' Goats

Working with Various Animals at the Homestead

Animal Welfare Education at Local Schools



YOUR PROJECT

AFRICA

Animal Welfare Outreach Program



ANY QUESTIONS?

INFO@GAPAFRICAPROJECTS.COM | +44 (0)207 1937819

Presentation 35

ZINGELA WILDERNESS RESERVE

AFRICA

River Safari – Rafting and Kayaking



ANY QUESTIONS?

INFO@GAPAFRICAPROJECTS.COM | +44 (0)207 1937819

Presentation 36

ZINGELA WILDERNESS RESERVE

AFRICA

Abseiling and Rock Climbing



ANY QUESTIONS?

INFO@GAPAFRICAPROJECTS.COM | +44 (0)207 1937819

Presentation 37



AFRICA

ACCOMMODATION & LIFESTYLE

Life in the African Bush

ACCOMMODATION

AFRICA

Game Reserve Camps – Nambiti

In keeping with the Safari Adventure theme, groups are accommodated on the reserve in comfortable safari tents, with communal hot and cold showers and regular flushing toilets. All meals are provided in a communal dining room.



ACCOMMODATION

AFRICA

Game Reserve Camps – Nambiti



ANY QUESTIONS?

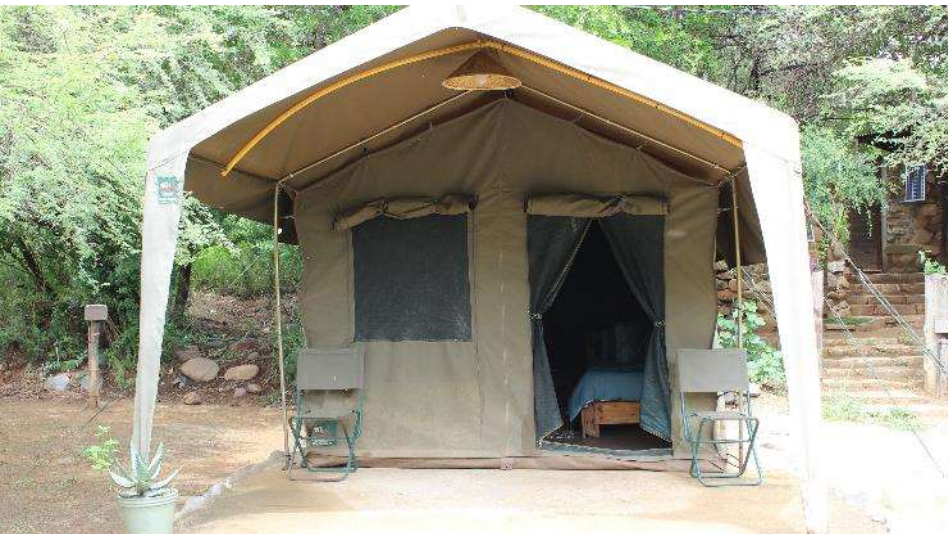
INFO@GAPAFRICAPROJECTS.COM | +44 (0)207 1937819

Presentation 40

ACCOMMODATION

AFRICA

Game Reserve Camps – Zingela



ANY QUESTIONS?

INFO@GAPAFRICAPROJECTS.COM | +44 (0)207 1937819

Presentation 41

ACCOMMODATION

AFRICA

Game Reserve Camps – Zingela



ANY QUESTIONS?

INFO@GAPAFRICAPROJECTS.COM | +44 (0)207 1937819

Presentation 42

ACCOMMODATION

AFRICA

Food at the project

Three meals are provided a day prepared by the kitchen staff.

Breakfasts will consist of toast and cereals; lunch may include pasta, wraps, burgers, stir fry; dinners include meat, fish and vegetables with rice, potatoes or pasta.

On weekends a braai (BBQ) is often organised.

Please advise us of any dietary requirements in advance so we can ensure that you are adequately catered for.



ACCOMMODATION

AFRICA

Food at the project



ANY QUESTIONS?

INFO@GAPAFRICAPROJECTS.COM | +44 (0)207 1937819

Presentation 44

ACCOMMODATION & LIFESTYLE

AFRICA

Life on project – Life long memories



ANY QUESTIONS?

INFO@GAPAFRICAPROJECTS.COM | +44 (0)207 1937819

Presentation 45

ACCOMMODATION & LIFESTYLE

AFRICA

Life on project – Life long memories



WHY SHOULD I TRAVEL?

AFRICA

What do previous travellers say about the KwaZulu-Natal Conservation Research?



"It was the most **amazing** experience I've ever had."



"I learnt so many new things that have **educated** me **beyond** classroom curriculum"



"There wasn't a single experience that didn't **amaze** me and make me feel **enriched**."

Reference: GAP Africa Projects Post Project Trip Questionnaire 23/24

WHY SHOULD I TRAVEL?

AFRICA

What do previous travellers say about the KwaZulu-Natal Conservation Research?



"Being at Nambiti really developed my knowledge of animal behaviours"



Everything **exceeded** my expectations, and the trip was **life-changing.**"



Our guide was **amazing**, we got the **opportunity** to take part in talks and demonstrations by APU

Reference: GAP Africa Projects Post Project Trip Questionnaire 23/24

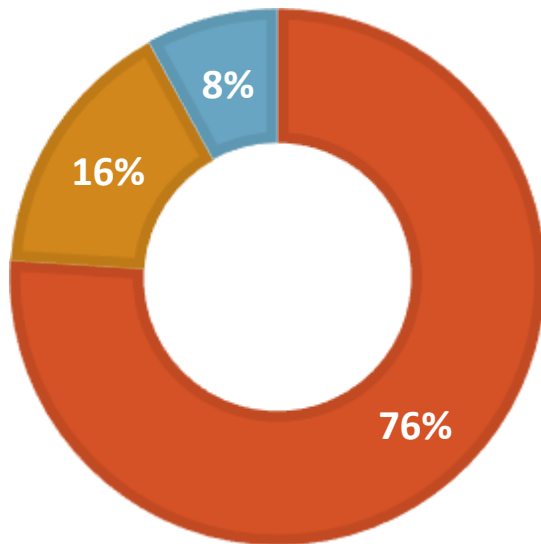
WHY SHOULD I TRAVEL?

AFRICA

Personal Development

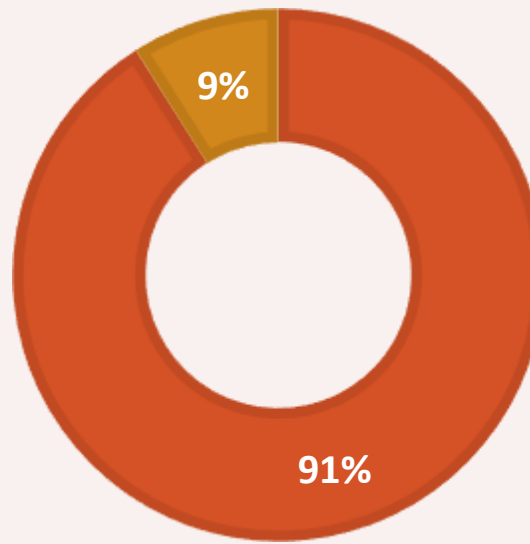
MENTAL HEALTH IMPROVEMENT

■ Yes ■ No ■ NA



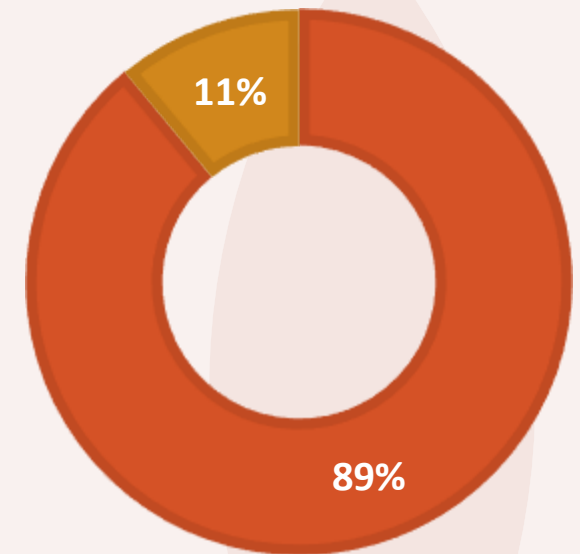
CONFIDENCE IMPROVEMENT

■ Yes ■ No



RESILIENCE IMPROVEMENT

■ Yes ■ No

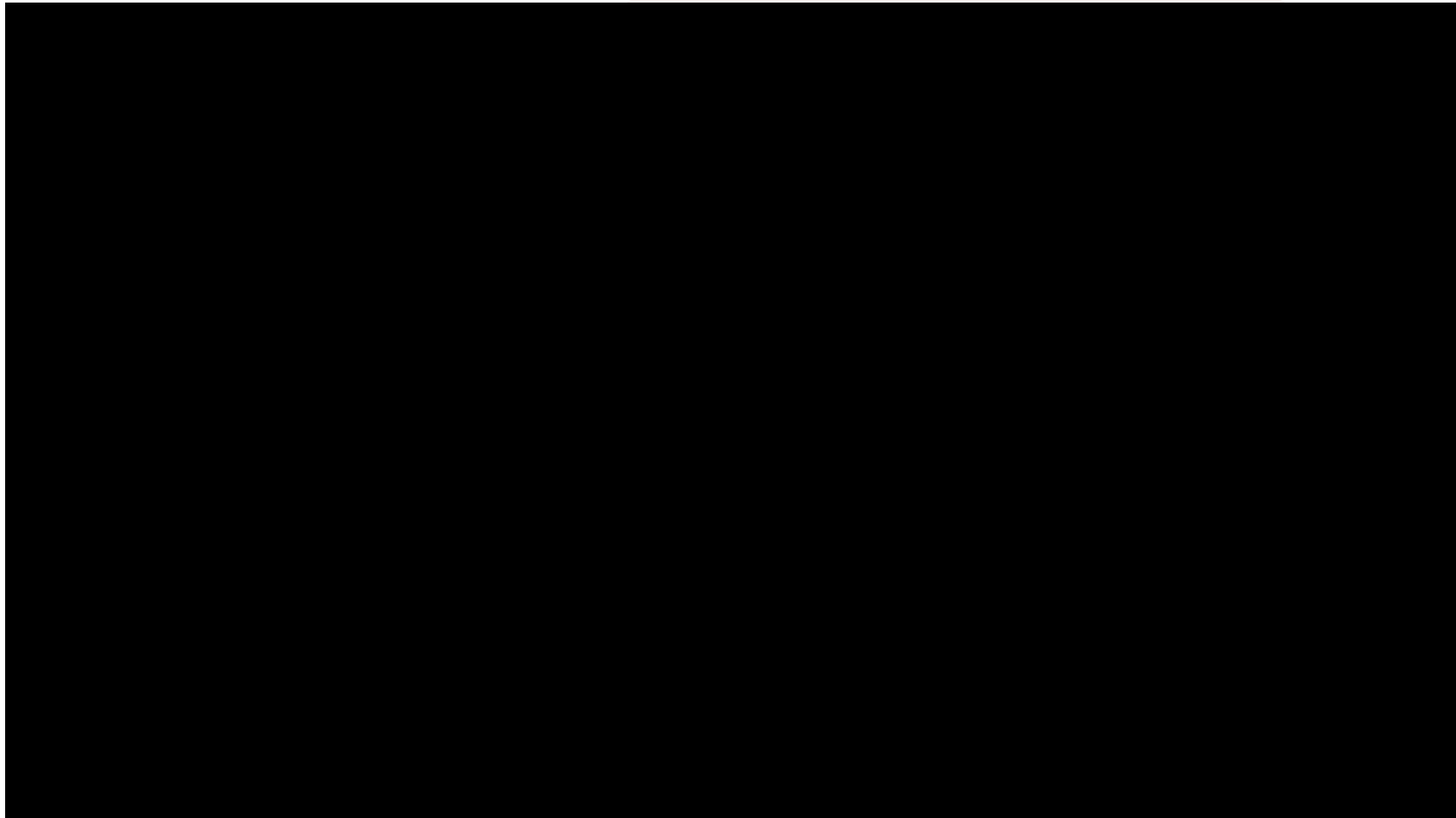


Reference: GAP Africa Projects Post Project Trip Questionnaire 23/24

ABOUT THE PROJECT

AFRICA

KwaZulu-Natal Conservation Research Video





AFRICA

THE NEXT STEPS TO YOUR FIELD TRIP

The next steps to the trip of a
lifetime!

THE NEXT STEPS

AFRICA

What is Included?

- Flights from London Heathrow
- Transfers to/from project
- Accommodation
- Three meals per day
- All activities as part of the project
- ATOL protection
- Airport meet/greet
- 24/7 In country support

NOT Included

- Personal Travel Insurance *
- Meals on travel days – before arriving & after departing from project
- Any activities not specified as part of the project
- Visa's/travel documents

* We recommend that you take out personal travel insurance as soon as your booking is confirmed.

THE NEXT STEPS

AFRICA



Project dates & key deadlines

Confirmed trip dates:

Depart UK: 6th July Arrive SA: 7th July 2025

Depart SA: 19th July | Arrive UK: 20th July 2025

Trip cost:

£2750.00* Based on a group of 18 (confirmed once group size and flights have been held)

Key deadlines are:

- Return the online booking form by 13th November
- Deposit payment by 20th November
- 50% instalment payment to be paid by 31/03/2025
- Balance payment to be paid by 26/05/2025
- Payment plans available
- 07/07/2025 e-Tickets & final documents will be issued

BOOKING YOUR ADVENTURE

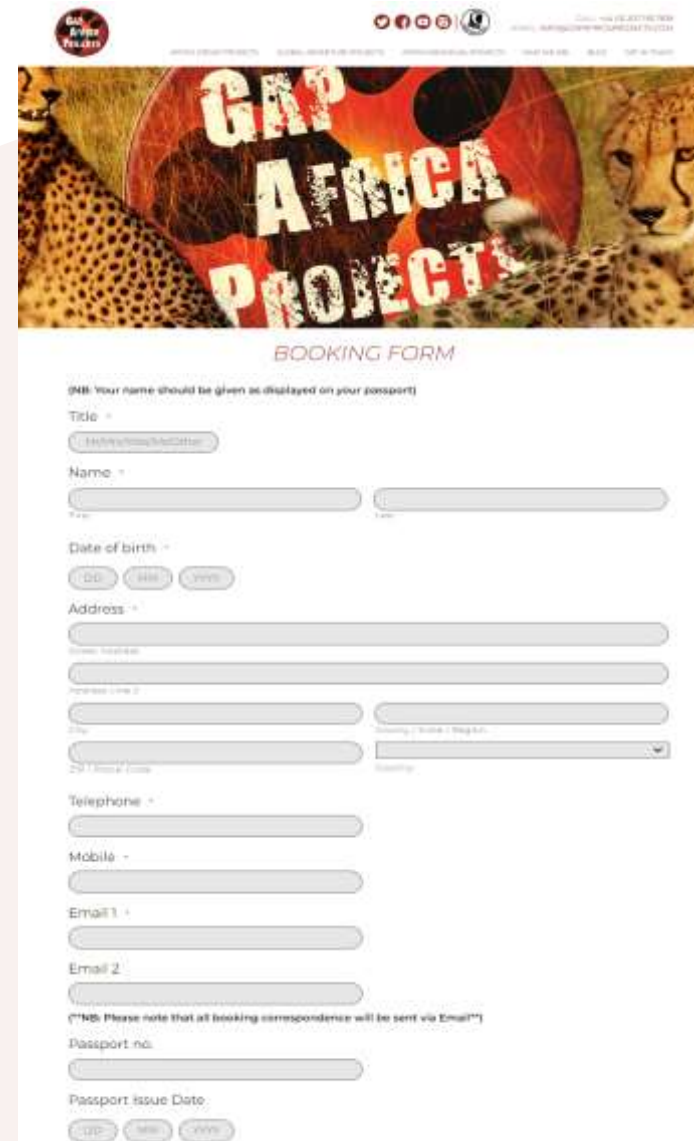
AFRICA

Booking Form

- Please submit by 13/11/2024
- No deposit required at this stage of booking
- Passport fields not mandatory

Key deadlines are:

- Deposit of £300 to confirm placement
- Instalment payment of 50% due 16 weeks before departure
- Balance payment due 8 weeks before departure



The screenshot shows the 'GAP Africa Projects' website header with a cheetah image and the text 'GAP AFRICA PROJECTS'. Below the header is the 'BOOKING FORM' section. The form includes fields for Title, Name, Date of birth, Address, Telephone, Mobile, Email 1, Email 2, Passport no., and Passport issue Date. There are also dropdown menus for Country and a checkbox for 'I am a volunteer'. A note at the bottom states: '(*NB: Please note that all booking correspondence will be sent via Email*)'.

THE NEXT STEPS

AFRICA

Confirmation Documents

Confirmation documents will be issued and sent directly to you via email.

Please communicate with us with any questions relating to the field trip.

GAFAFRICA PROJECTS

Dear Chlo,

Thank you for booking your trip with GAFAFRICA. As part of our service, we will send you a confirmation document. Please take the time to read through this document and check that everything is correct.

We have received your request for a confirmation document. It will be sent to you via email. Please check your email for the confirmation document. If you do not receive it, please contact us.

Passenger Details

Name and surnames: [Name]
Date of birth: [Date]
Nationality: [Nationality]
Passport number: [Passport number]
Passport expiry date: [Expiry date]

Passport Copies

It is recommended that you provide a photocopy of your passport. This should be a recent copy, not older than 6 months. It should be a full-page copy, not a photocopy of a photocopy.

Travel Insurance

It is recommended that you have travel insurance. This should cover the entire duration of your trip. It should also cover medical expenses, repatriation, and loss of baggage.

Passengers Travelling

Miss Chlo
Passenger(s): [Name]
Sub Land Conservation Research (S/LC/R) - (S/LC/R)

Inclusions

Flight, ground transport, accommodation, meals, and other expenses.

Exclusions

Insurance, visa, and other expenses.

Your Flight(s)

Flight(s)	Class	Destination	Price
10/01/2020 - 11/01/2020	1st Class	London Heathrow (LHR)	£1,200.00
12/01/2020 - 13/01/2020	1st Class	London Heathrow (LHR)	£1,200.00
15/01/2020 - 16/01/2020	1st Class	London Heathrow (LHR)	£1,200.00
18/01/2020 - 19/01/2020	1st Class	London Heathrow (LHR)	£1,200.00

GAFAFRICA PROJECTS

444 00 207 193 7819

CONFIRMATION INVOICE

GAFAFRICA PROJECTS

Miss Chlo

Flight Details

Flight(s)	Class	Destination	Price
10/01/2020 - 11/01/2020	1st Class	London Heathrow (LHR)	£1,200.00
12/01/2020 - 13/01/2020	1st Class	London Heathrow (LHR)	£1,200.00
15/01/2020 - 16/01/2020	1st Class	London Heathrow (LHR)	£1,200.00
18/01/2020 - 19/01/2020	1st Class	London Heathrow (LHR)	£1,200.00

GAFAFRICA PROJECTS

444 00 207 193 7819

ATOL Certificate

This confirms that your money is protected by the ATOL scheme and that you can get home if your travel company collapses.

This certificate sets out how the ATOL scheme will protect the people named on it for the parts of their trip listed below.

Who is protected?

Number of passengers: 1

What is protected?

GAFAFRICA PROJECTS

Who is protecting your trip?

GAFAFRICA PROJECTS

Your protection

You are protected from when you name your trip on this certificate to the end of your trip.

If GAFAFRICA PROJECTS ceases trading, the passengers named above will either:

1. complete their trip and return to the UK; or
2. receive a refund.

Your protection depends on the terms of the ATOL scheme (available at www.atol.org.uk).

If GAFAFRICA PROJECTS ceases trading, you must follow the instructions at www.atol.org.uk (where there will be details of arrangements to bring people back to the UK, and information on how people can claim their money back) or you can call 1444 70 7400 0000.

GAFAFRICA PROJECTS

444 00 207 193 7819

BOOKING YOUR ADVENTURE

AFRICA

Group Web Page



<https://gapafricaprojects.com/25-4637/>

Booking Form



<https://gapafricaprojects.com/booking-form-25-4637-ncl-kzv-northumberland/>

Sustainability & Social, Economic Responsibility

Local employment from rural communities – our project partners employ a high percentage of staff from local communities. They advocate training to advance careers in hospitality, wildlife and conservation.

Low environmental impact camps – our project bush camps are built with minimal impact on the environment. Resources from the surrounding area are utilised for buildings, water is (where possible) pumped from local river sources and green energy supplies, such as solar are championed.

Community donations and support – we encourage all our international study groups to be proactive in donation collections and arrange for excess baggage for said donations to be taken out to South Africa in support of the local communities.

Move Africa, supporting young females – 3 in 10 girls in South Africa miss a week of school every month because they cannot afford basic sanitary products. Our project partners work with Move Africa alongside their partner NGOs, to distribute menstrual cups to the local communities and provide education workshops.

Rhino Art – Project rhino realises the enormous responsibility the youth have to ensure our wildlife is protected for many generations to come. They ensure they can reach and educate as many kids as possible through Rhino Art, using art workshops to teach about conservation. This initiative is supported by our local project partners.

Food/crop education – our project partners encourage food and crop education to rural communities, where cost of living to low income families and distance travelled to obtain basic resources can prove problematic. Projects include community allotments and providing education on best practice for crop rotations, harvest seasons and nutrition.

Recycling workshops – Litter, and in particular plastics, is a major issue and threat to the ecosystem in Southern Africa. Rural communities have limited waste removal available and it is therefore a problem escalating at an alarming rate. Recycling workshops are provided through local schools to help educate children on the importance of correctly disposing of litter and recycling plastics.



GLOBAL reach. **ADVENTURE** for all. **PROJECTS** to inspire.

Explore our network of Global Adventure Projects:



GLOBALADVENTUREPROJECTS.COM

