



# University of Reading Project Presentation



## KwaZulu-Natal Conservation Research

**AFRICA**

**GLOBAL** reach. **ADVENTURE** for all. **PROJECTS** to inspire.





**AFRICA**

# **KWAZULU-NATAL PROJECT OVERVIEW**

Overview and location  
of the project



# ABOUT THE PROJECT

AFRICA

## Your Conservation Field Trip Explained

- A unique academic conservation experience based in South Africa
- Live and work in the wild of Africa
- The opportunity to experience hands on wildlife conservation
- Bespoke, tailor made projects to suit research requirements
- Project Activities include:
  - Pioneering Conservation Research
  - Conservation Activities
  - Cultural Enrichment
  - Wildlife, Livestock and Domestic Community Work
- Full 13 nights in South Africa
- All inclusive experience
- The most incredible wildlife experience you will ever have



# ABOUT THE PROJECT

AFRICA

## KwaZulu-Natal Wildlife & Veterinary Project

Our academic team and qualified rangers at the KwaZulu-Natal Conservation Research Project offer a bespoke course to each institution dependent on their own personal objectives and learning needs.

We set out the basis of the trip, comprising of a 12-day academic module split between the two conservation reserves.

This is not a Safari Holiday!

A full day will be planned but will vary from day to day depending on the days task and research goals.

The project split and duration are as follows:

### 12 Day Itinerary

**Days 1 – 7**

Nambiti Big 5 Conservation Research

**Days 7 – 13**

Zingela Wilderness Conservation



# PROJECT OVERVIEW

AFRICA

## KwaZulu-Natal Conservation Research Project- Location

- South Africa a world leader in conservation
- Malaria free KwaZulu Natal







AFRICA

# 7 Days at Nambiti Game Reserve

A Big Five Game Reserve





# ABOUT THE PROJECT

AFRICA

## Nambiti Game Reserve

Nambiti Game Reserve is a magnificent 23,000 acres of unspoiled wilderness boasting the Big 5 and incredible biodiversity (grasslands, riverine bush, savannah and thornveld) offering unprecedented diversity of wildlife.





# ABOUT THE PROJECT

AFRICA

Home to over 40 Species of Mammal



ANY QUESTIONS?

[INFO@GAPAFRICAPROJECTS.COM](mailto:INFO@GAPAFRICAPROJECTS.COM) | +44 (0)207 1937819

Presentation 8



# ABOUT THE PROJECT

AFRICA

Many Reptile, Insect and Bird Species



ANY QUESTIONS?

[INFO@GAPAFRICAPROJECTS.COM](mailto:INFO@GAPAFRICAPROJECTS.COM) | +44 (0)207 1937819

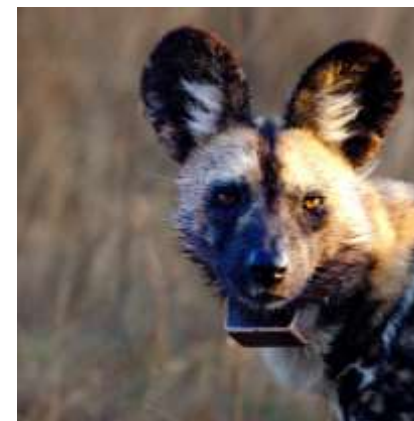
Presentation 9



# ABOUT THE PROJECT

AFRICA

## Introduction of Wild Dog



ANY QUESTIONS?

[INFO@GAPAFRICAPROJECTS.COM](mailto:INFO@GAPAFRICAPROJECTS.COM) | +44 (0)207 1937819

Presentation 10



# YOUR PROJECT

AFRICA

## Your Conservation Programme – Nambiti

Students will be taught and work alongside the field guides and conservation team. The following examples depict the day-to-day activities that may be undertaken as part of the project at Nambiti.

- **Alien Vegetation Control & Reserve Maintenance**
- **Use of Telemetry Tracking**
- **Elephant Monitoring / Population Study**
- **Rhino Monitoring – Awareness**
- **Anti-poaching talk and fence walk**
- **Camera Trapping**
- **Night Drive**
- **Big Five Bush Walk**
- **Habitat and Prey Selection of Predators**
- **Tracks, Signs and Spoor**
- **Community Development**





# NAMBITI GAME RESERVE

AFRICA

## Nambiti Research Team



ANY QUESTIONS?

INFO@GAPAFRICAPROJECTS.COM | +44 (0)207 1937819

Presentation 12



# NAMBITI GAME RESERVE

AFRICA

## Use of Telemetry Tracking





# NAMBITI GAME RESERVE

AFRICA

## Ecology Trails: Tracks, signs and spoor



ANY QUESTIONS?

[INFO@GAPAFRICAPROJECTS.COM](mailto:INFO@GAPAFRICAPROJECTS.COM) | +44 (0)207 1937819

Presentation 14



# NAMBITI GAME RESERVE

AFRICA

## Big Five Bush Walk



ANY QUESTIONS?

[INFO@GAPAFRICAPROJECTS.COM](mailto:INFO@GAPAFRICAPROJECTS.COM) | +44 (0)207 1937819

Presentation 15



# ABOUT THE PROJECT

AFRICA

## Research – Habitat and Prey Selection: Predators

Focus on Lion and Cheetah populations:

GPS coordinates from tracking collars

Can be used for movement/spatial/home range analysis





## Wildlife Monitoring – Elephant Impact Assessment

Research into impact of elephant on the eco system:

Matriarch collared so GPS range data available

Herd population data

Elephant impact assessments from February '23

Long term ongoing project looking at elephant impact on vegetation





# NAMBITI GAME RESERVE

AFRICA

## Rhino Monitoring – Awareness and Anti-Poaching



ANY QUESTIONS?

[INFO@GAPAFRICAPROJECTS.COM](mailto:INFO@GAPAFRICAPROJECTS.COM) | +44 (0)207 1937819

Presentation 18



## Camera Trap – Research and Study

Set out own camera traps

Learn about correct placement, best location etc

Never know what we'll find!





# NAMBITI GAME RESERVE

AFRICA

## Night Game Drives



ANY QUESTIONS?

[INFO@GAPAFRICAPROJECTS.COM](mailto:INFO@GAPAFRICAPROJECTS.COM) | +44 (0)207 1937819

Presentation 20



# NAMBITI GAME RESERVE

AFRICA

## Community Projects & Zulu Culture

Learn about traditional Zulu culture

Community engagement essential for longterm conservation

Positive impact supporting not for profit initiatives

Projects: Move Africa, Jabong Hats & Rhino Art





# ABOUT THE PROJECT

AFRICA

## Community – GAP Donation Bags



ANY QUESTIONS?

[INFO@GAPAFRICAPROJECTS.COM](mailto:INFO@GAPAFRICAPROJECTS.COM) | +44 (0)207 1937819

Presentation 22





AFRICA

# 6 Days at Zingela Nature Reserve

River Research and Adventure





# ABOUT THE PROJECT

AFRICA

## Zingela River Safari

Zingela Wildlife Reserve covers 12,500 acres of predator free, pristine African bushveld. You will have the opportunity to be involved with the research that takes place at the property;. You will also have the chance to participate in a host of activities during your stay.



ANY QUESTIONS?

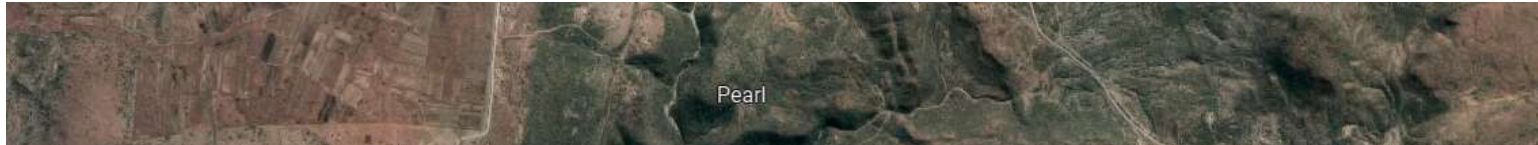
[INFO@GAPAFRICAPROJECTS.COM](mailto:INFO@GAPAFRICAPROJECTS.COM) | +44 (0)207 1937819

Presentation 24



# NAMBITI TO ZINGELA

AFRICA



ANY QUESTIONS?

[INFO@GAPAFRICAPROJECTS.COM](mailto:INFO@GAPAFRICAPROJECTS.COM) | +44 (0)207 1937819

Presentation 25



## Your Conservation Programme – Zingela

Students will be taught and work alongside the field guides and scientific team. The following examples depict the day-to-day activities that may be undertaken as part of the project at Zingela Reserve.

- **Spatial Distribution and Habitat use of species**
- **Use of Telemetry Tracking**
- **Giraffe migration and Conservation Project**
- **Reptile pit fall traps**
- **Freshwater Ecology**
- **Mini SASS**
- **Fish Tagging**
- **Bird Ringing**
- **Educational Bush Walks – Ecology & Botany**
- **Tracks, Signs and Spoor**
- **Community Development**
- **Camera Trapping and data processing**





## Potjie Cooking Competition

A traditional South African experience, the Potjie competition involves cooking a stew in three-legged pots over an open fire..

The winning dish, judged by our expert cooks, will be served for dinner, allowing everyone to enjoy the fruits of their labor.





## Giraffe Migration and Research Project

Population data and database for individuals

Migration and range data through unfenced territories

Diet and vegetation impact assessment

Genetic diversity





## River Assessments –

Fresh water eel project –  
understanding life cycle using GPS  
data

Fish tagging and release

Collecting biometric data

SASS – South African Scoring System





## Reptile Research and Trapping

Data collection started in 2022 with annual projects planned

Species frequency

Herpetofauna succession during vegetation rehabilitation

Comparing herpetological diversity





# ZINGELA WILDERNESS RESERVE

AFRICA

## Educational Bush Walks – Ecology and Botany



ANY QUESTIONS?

[INFO@GAPAFRICAPROJECTS.COM](mailto:INFO@GAPAFRICAPROJECTS.COM) | +44 (0)207 1937819

Presentation 31



## Animal Welfare Outreach Program

Participants will join the camp's in-house veterinarian to assist local Zulu farmers in caring for their livestock, primarily goats, but also including dogs, cats, sheep, and cattle, depending on the participants' qualifications and experience.

Vaccinating and Caring for Local Farmers' Goats

Working with Various Animals at the Homestead

Animal Welfare Education at Local Schools





# YOUR PROJECT

AFRICA

## Animal Welfare Outreach Program



ANY QUESTIONS?

[INFO@GAPAFRICAPROJECTS.COM](mailto:INFO@GAPAFRICAPROJECTS.COM) | +44 (0)207 1937819

Presentation 33



# ZINGELA WILDERNESS RESERVE

AFRICA

## River Safari – Rafting and Kayaking



ANY QUESTIONS?

[INFO@GAPAFRICAPROJECTS.COM](mailto:INFO@GAPAFRICAPROJECTS.COM) | +44 (0)207 1937819

Presentation 34



# ZINGELA WILDERNESS RESERVE

AFRICA

## Abseiling and Rock Climbing



ANY QUESTIONS?

[INFO@GAPAFRICAPROJECTS.COM](mailto:INFO@GAPAFRICAPROJECTS.COM) | +44 (0)207 1937819

Presentation 35





**AFRICA**

# **ACCOMMODATION & LIFESTYLE**

Life in the African Bush





# ACCOMMODATION

AFRICA

## Game Reserve Camps - Nambiti

In keeping with the Safari Adventure theme, groups are accommodated on the reserve in comfortable safari tents, with communal hot and cold showers and regular flushing toilets. All meals are provided in a communal dining room.

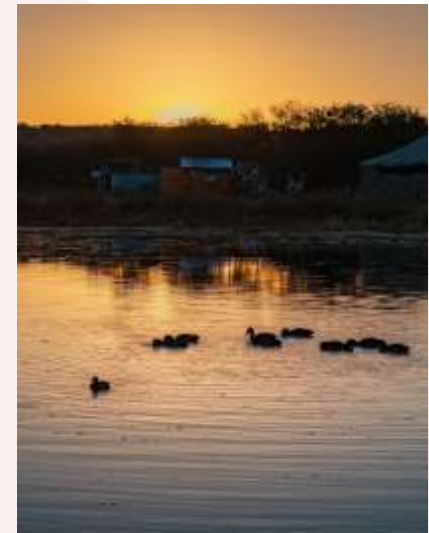




# ACCOMMODATION

AFRICA

## Game Reserve Camps - Nambiti



ANY QUESTIONS?

[INFO@GAPAFRICAPROJECTS.COM](mailto:INFO@GAPAFRICAPROJECTS.COM) | +44 (0)207 1937819

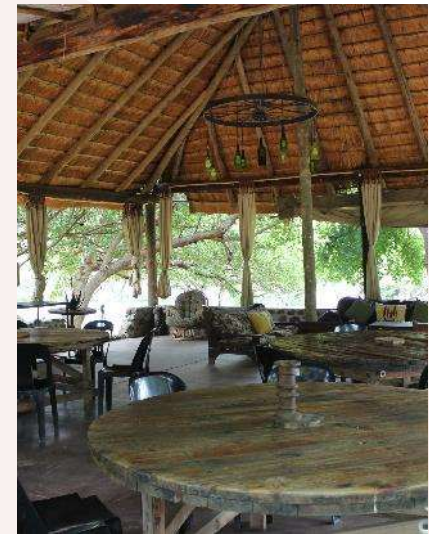
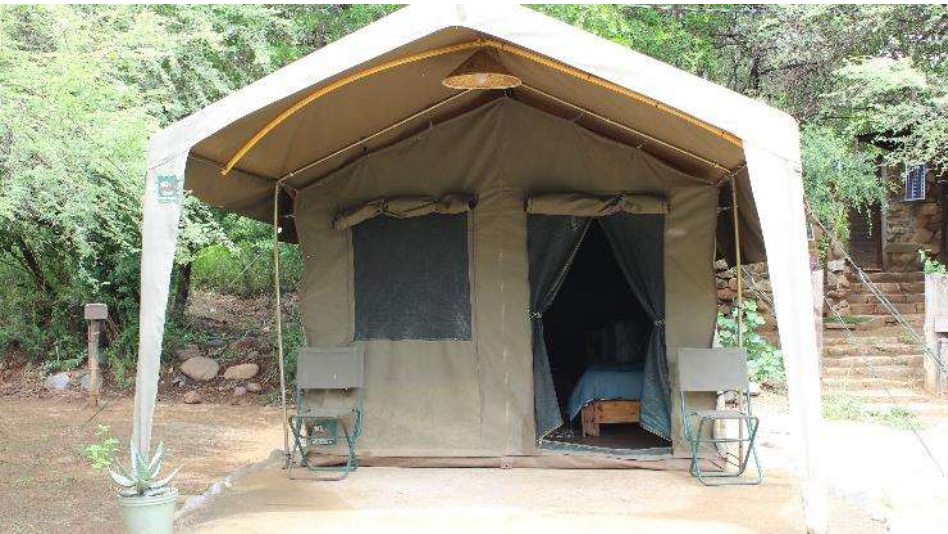
Presentation 38



# ACCOMMODATION

AFRICA

## Game Reserve Camps - Zingela



ANY QUESTIONS?

INFO@GAPAFRICAPROJECTS.COM | +44 (0)207 1937819

Presentation 39



# ACCOMMODATION

AFRICA

## Game Reserve Camps - Zingela



ANY QUESTIONS?

[INFO@GAPAFRICAPROJECTS.COM](mailto:INFO@GAPAFRICAPROJECTS.COM) | +44 (0)207 1937819

Presentation 40



## Food at the project

Three meals are provided a day prepared by the kitchen staff.

Breakfasts will consist of toast and cereals; lunch may include pasta, wraps, burgers, stir fry; dinners include meat, fish and vegetables with rice, potatoes or pasta.

On weekends a braai (BBQ) is often organised.

Please advise us of any dietary requirements in advance so we can ensure that you are adequately catered for.





# ACCOMMODATION

AFRICA

## Food at the project



ANY QUESTIONS?

[INFO@GAPAFRICAPROJECTS.COM](mailto:INFO@GAPAFRICAPROJECTS.COM) | +44 (0)207 1937819

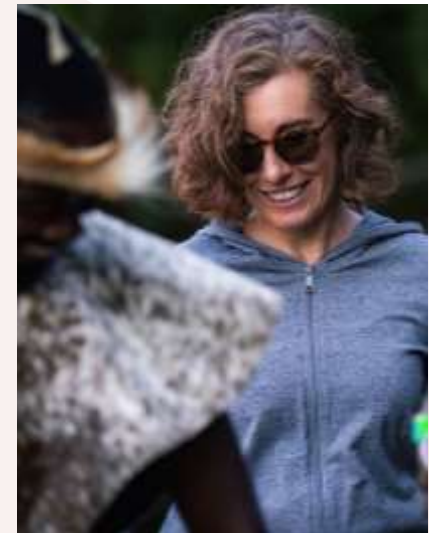
Presentation 42



# ACCOMMODATION & LIFESTYLE

AFRICA

## Life on project – Life long memories



ANY QUESTIONS?

[INFO@GAPAFRICAPROJECTS.COM](mailto:INFO@GAPAFRICAPROJECTS.COM) | +44 (0)207 1937819

Presentation 43



# ACCOMMODATION & LIFESTYLE

AFRICA

## Life on project – Life long memories



ANY QUESTIONS?

[INFO@GAPAFRICAPROJECTS.COM](mailto:INFO@GAPAFRICAPROJECTS.COM) | +44 (0)207 1937819

Presentation 44



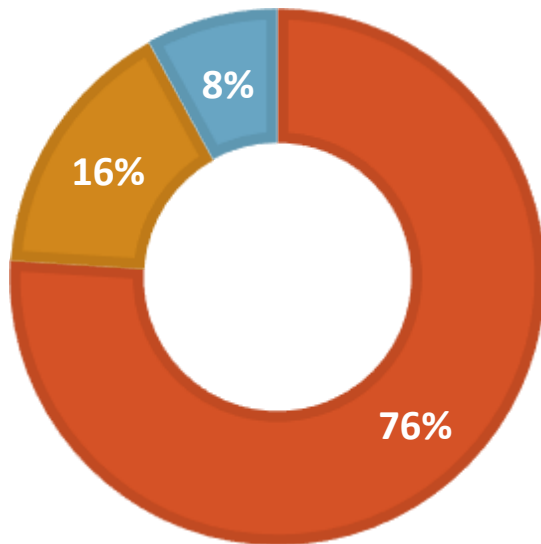
# WHY SHOULD I TRAVEL?

AFRICA

## Personal Development

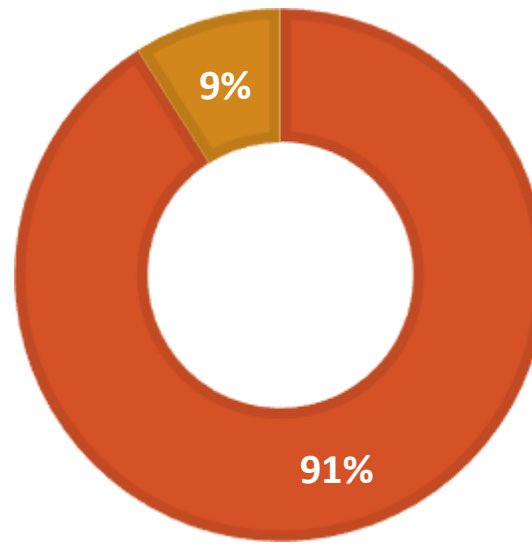
### MENTAL HEALTH IMPROVEMENT

■ Yes ■ No ■ NA



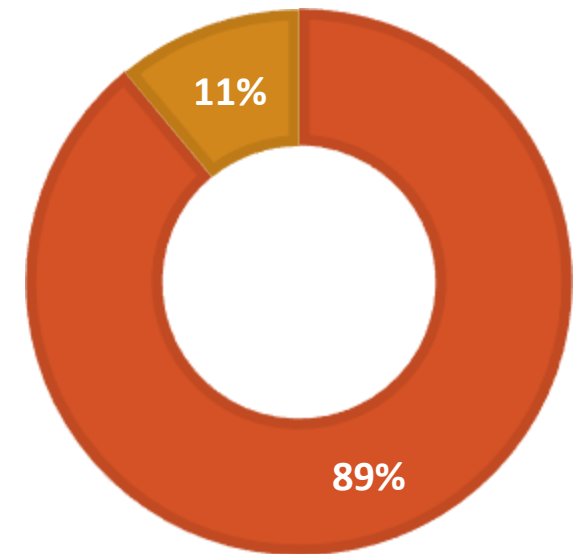
### CONFIDENCE IMPROVEMENT

■ Yes ■ No



### RESILIENCE IMPROVEMENT

■ Yes ■ No



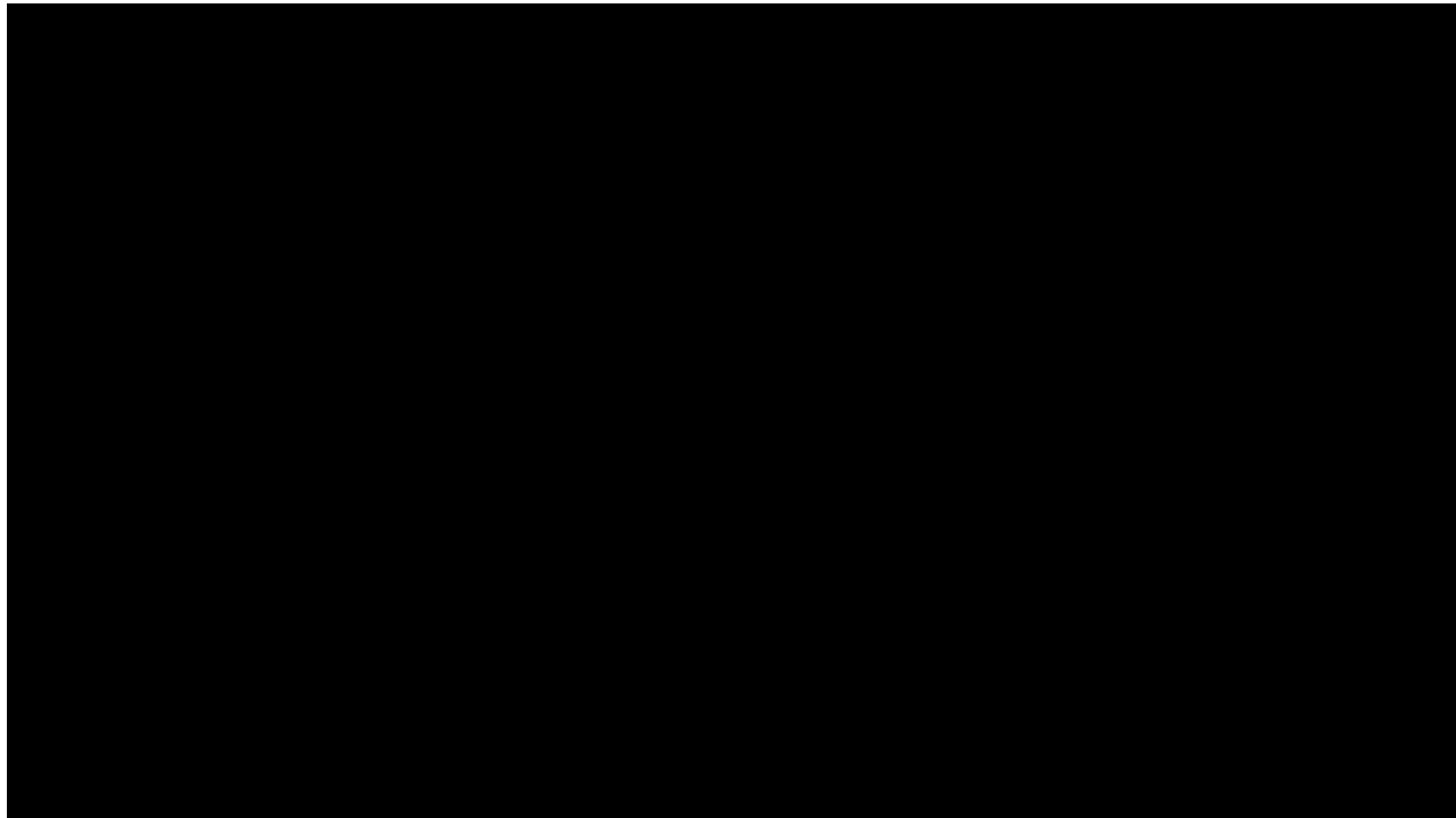
Reference: GAP Africa Projects Post Project Trip Questionnaire 23/24



# ABOUT THE PROJECT

AFRICA

## KwaZulu-Natal Conservation Research Video







**AFRICA**

# THE NEXT STEPS TO YOUR FIELD TRIP

The next steps to the trip of a  
lifetime!



# THE NEXT STEPS

AFRICA



## Project dates & key deadlines

### Confirmed trip dates:

Depart UK: 15<sup>th</sup> June | Arrive SA: 16<sup>th</sup> June 2025

Depart SA: 29<sup>th</sup> June | Arrive UK: 30<sup>th</sup> June 2025

### Trip cost:

Estimated £2,395.00 Based on a minimum group of 18 (confirmed once flights have been held)

### Key deadlines are:

- Deposit payment, £300.00
- 50% instalment payment to be paid 16 weeks before
- Balance payment to be paid by 8 weeks before
- Payment plans available
- 2 before departure e-Tickets & final documents will be issued



## What is Included?

- Flights from London Heathrow
- Transfers to/from project
- Accommodation
- Three meals per day
- All activities as part of the project
- ATOL protection
- Airport meet/greet
- 24/7 In country support

## NOT Included

- Personal Travel Insurance \*
- Meals on travel days – before arriving & after departing from project
- Any activities not specified as part of the project
- Visa's/travel documents

\* We recommend that you take out personal travel insurance as soon as your booking is confirmed.



# THE NEXT STEPS

AFRICA

## Confirmation Documents

Confirmation documents will be issued and sent directly to you via email.

Please communicate with us with any questions relating to the field trip.

**Your Booking**

**Travel Advice**

**Names and surnames**

**Passport expiry date**

**Passport Copies**

**Travel Insurance**

**Passengers Travelling**

**Passenger(s)**

**Sub Land Conservation Research (SALC) (SALC/2)**

**Inclusions**

**Exclusions**

**Visit Flight(s)**

FLIGHT	CLASS	FARE	STATUS
BA1234	Y	100.00	Confirmed
BA5678	Y	150.00	Confirmed
BA9012	Y	200.00	Confirmed
BA3456	Y	250.00	Confirmed
BA7890	Y	300.00	Confirmed

**CONFIRMATION INVOICE**

**TRIP DETAILS**

Item	Description	Quantity	Unit Price	Total
1	Sub Land Conservation Research	1	3000.00	3000.00
2	Travel Insurance	1	100.00	100.00
3	Transportation	1	500.00	500.00
4	Accommodation	1	200.00	200.00
5	Meals	1	100.00	100.00
6	Drinks	1	50.00	50.00
7	Other	1	100.00	100.00
<b>Total</b>				<b>4050.00</b>

**ATOL Certificate**

This confirms that your money is protected by the ATOL scheme and that you can get home if your travel company ceases.

This certificate sets out how the ATOL scheme will protect the people named on it for the parts of their trip listed below.

**Who is protected?** Number of passengers: 12

**What is protected?**

**Who is protecting your trip?**

**Your protection**

1 complete your trip and return to the UK; or  
2 receive a refund.

**ATOL Certificate**

ATOL Certificate Number: 1234567890

ATOL Certificate Issued: 12/12/2023

ATOL Certificate Valid Until: 31/12/2024



## Sustainability & Social, Economic Responsibility

**Local employment from rural communities** – our project partners employ a high percentage of staff from local communities. They advocate training to advance careers in hospitality, wildlife and conservation.

**Low environmental impact camps** – our project bush camps are built with minimal impact on the environment. Resources from the surrounding area are utilised for buildings, water is (where possible) pumped from local river sources and green energy supplies, such as solar are championed.

**Community donations and support** – we encourage all our international study groups to be proactive in donation collections and arrange for excess baggage for said donations to be taken out to South Africa in support of the local communities.

**Move Africa, supporting young females** – 3 in 10 girls in South Africa miss a week of school every month because they cannot afford basic sanitary products. Our project partners work with Move Africa alongside their partner NGOs, to distribute menstrual cups to the local communities and provide education workshops.

**Rhino Art** – Project rhino realises the enormous responsibility the youth have to ensure our wildlife is protected for many generations to come. They ensure they can reach and educate as many kids as possible through Rhino Art, using art workshops to teach about conservation. This initiative is supported by our local project partners.

**Food/crop education** – our project partners encourage food and crop education to rural communities, where cost of living to low income families and distance travelled to obtain basic resources can prove problematic. Projects include community allotments and providing education on best practice for crop rotations, harvest seasons and nutrition.

**Recycling workshops** – Litter, and in particular plastics, is a major issue and threat to the ecosystem in Southern Africa. Rural communities have limited waste removal available and it is therefore a problem escalating at an alarming rate. Recycling workshops are provided through local schools to help educate children on the importance of correctly disposing of litter and recycling plastics.





**GLOBAL** reach. **ADVENTURE** for all. **PROJECTS** to inspire.

Explore our network of Global Adventure Projects:



[GLOBALADVENTUREPROJECTS.COM](http://GLOBALADVENTUREPROJECTS.COM)

