



University of Chester

Introduction Presentation

South Africa Experiential Learning Trip 2025

AFRICA

GLOBAL reach. **ADVENTURE** for all. **PROJECTS** to inspire.



AFRICA

ABOUT THE PROJECT

Overview and location
of the project



ABOUT THE PROJECT

AFRICA

Your Conservation Field Trip Explained

- A unique academic conservation experience based in South Africa
- Live and work in the wild of Africa
- The opportunity to experience hands on wildlife conservation
- Bespoke, tailor made projects to suit research requirements
- Project Activities include:
 - Pioneering Conservation Research
 - Conservation Activities
 - Cultural Enrichment
 - Wildlife, Livestock and Domestic Community Work
- Full 10 days in South Africa
- All inclusive experience
- The most incredible wildlife experience you will ever have

ABOUT THE PROJECT

AFRICA

KwaZulu-Natal Wildlife & Veterinary Project

Our academic team and qualified rangers at the KwaZulu-Natal Conservation Research Project offer a bespoke course to each institution dependent on their own personal objectives and learning needs.

We set out the basis of the trip, comprising of a 10-day academic module split between the two conservation reserves.

This is not a Safari Holiday!

A full day will be planned but will vary from day to day depending on the days task and research goals.

The project split and duration are as follows:

10 Day Itinerary

Days 1 – 6
Zingela Wilderness Conservation

Days 6 – 10
Nambiti Big 5 Conservation Research



PROJECT OVERVIEW

AFRICA

KwaZulu-Natal Conservation Research Project- Location

- South Africa a world leader in conservation
- Malaria free KwaZulu Natal





AFRICA

Zingela Nature Reserve

River Research and Ecology

ABOUT THE PROJECT

AFRICA

Zingela River Safari

Zingela Wildlife Reserve covers 12,500 acres of predator free, pristine African bushveld. You will have the opportunity to be involved with the research that takes place at the property;. You will also have the chance to participate in a host of activities during your stay.



ANY QUESTIONS?

INFO@GAPAFRICAPROJECTS.COM | +44 (0)207 1937819

Pre-Departure Presentation 7

YOUR PROJECT

AFRICA

Your Conservation Programme – Zingela

Students will be taught and work alongside the field guides and scientific team. The following examples depict the day-to-day activities that may be undertaken as part of the project at Zingela Reserve.

- **Spatial Distribution and Habitat use of species**
- **Use of Telemetry Tracking**
- **Giraffe migration and Conservation Project**
- **Reptile pit fall traps**
- **Freshwater Ecology**
- **Mini SASS**
- **Fish Tagging**
- **Bird Ringing**
- **Educational Bush Walks – Ecology & Botany**
- **Tracks, Signs and Spoor**
- **Community Development**
- **Camera Trapping and data processing**



YOUR PROJECT

AFRICA

Potjie Cooking Competition

A traditional South African experience, the Potjie competition involves cooking a stew in three-legged pots over an open fire..

The winning dish, judged by our expert cooks, will be served for dinner, allowing everyone to enjoy the fruits of their labor.



ANY QUESTIONS?

INFO@GAPAFRICAPROJECTS.COM | +44 (0)207 1937819

Pre-Departure Presentation 9

ZINGELA WILDERNESS RESERVE

AFRICA

Giraffe Migration and Research Project

Population data and database for individuals

Migration and range data through unfenced territories

Diet and vegetation impact assessment

Genetic diversity



ANY QUESTIONS?

INFO@GAPAFRICAPROJECTS.COM | +44 (0)207 1937819

Pre-Departure Presentation 10

ZINGELA WILDERNESS RESERVE

AFRICA

River Assessments –

Fresh water eel project –
understanding life cycle using GPS
data

Fish tagging and release

Collecting biometric data

SASS – South African Scoring System



ZINGELA WILDERNESS RESERVE

AFRICA

Reptile Research and Trapping

Data collection started in 2022 with annual projects planned

Species frequency

Herpetofauna succession during vegetation rehabilitation

Comparing herpetological diversity



ANY QUESTIONS?

INFO@GAPAFRICAPROJECTS.COM | +44 (0)207 1937819

Pre-Departure Presentation 12

ZINGELA WILDERNESS RESERVE

AFRICA

Educational Bush Walks – Ecology and Botany



ANY QUESTIONS?

INFO@GAPAFRICAPROJECTS.COM | +44 (0)207 1937819

Pre-Departure Presentation 13

YOUR PROJECT

AFRICA

Animal Welfare Outreach Program

Participants will join the camp's in-house veterinarian to assist local Zulu farmers in caring for their livestock, primarily goats, but also including dogs, cats, sheep, and cattle, depending on the participants' qualifications and experience.

Vaccinating and Caring for Local Farmers' Goats

Working with Various Animals at the Homestead

Animal Welfare Education at Local Schools



ANY QUESTIONS?

INFO@GAPAFRICAPROJECTS.COM | +44 (0)207 1937819

Pre-Departure Presentation 14

YOUR PROJECT

AFRICA

Animal Welfare Outreach Program



ANY QUESTIONS?

INFO@GAPAFRICAPROJECTS.COM | +44 (0)207 1937819

Pre-Departure Presentation 15

ZINGELA WILDERNESS RESERVE

AFRICA

River Safari – Rafting and Kayaking



ANY QUESTIONS?

INFO@GAPAFRICAPROJECTS.COM | +44 (0)207 1937819

Pre-Departure Presentation 16



AFRICA

Nambiti Game Reserve

A Big Five Game Reserve



ABOUT THE PROJECT

AFRICA

Nambiti Game Reserve

Nambiti Game Reserve is a magnificent 23,000 acres of unspoiled wilderness boasting the Big 5 and incredible biodiversity (grasslands, riverine bush, savannah and thornveld) offering unprecedented diversity of wildlife.



ANY QUESTIONS?

INFO@GAPAFRICAPROJECTS.COM | +44 (0)207 1937819

Pre-Departure Presentation 18

ABOUT THE PROJECT

AFRICA

Home to over 40 Species of Mammal



ANY QUESTIONS?

INFO@GAPAFRICAPROJECTS.COM | +44 (0)207 1937819

Pre-Departure Presentation 19

ABOUT THE PROJECT

AFRICA

Many Reptile, Insect and Bird Species



ANY QUESTIONS?

INFO@GAPAFRICAPROJECTS.COM | +44 (0)207 1937819

Pre-Departure Presentation 20

YOUR PROJECT

AFRICA

Your Conservation Programme – Nambiti

Students will be taught and work alongside the field guides and conservation team. The following examples depict the day-to-day activities that may be undertaken as part of the project at Nambiti.

- **Alien Vegetation Control & Reserve Maintenance**
- **Use of Telemetry Tracking**
- **Elephant Monitoring / Population Study**
- **Rhino Monitoring – Awareness**
- **Anti-poaching talk and fence walk**
- **Camera Trapping**
- **Night Drive**
- **Big Five Bush Walk**
- **Habitat and Prey Selection of Predators**
- **Tracks, Signs and Spoor**
- **Community Development**



NAMBITI GAME RESERVE

AFRICA

Nambiti Research Team



ANY QUESTIONS?

INFO@GAPAFRICAPROJECTS.COM | +44 (0)207 1937819

Pre-Departure Presentation 22

NAMBITI GAME RESERVE

AFRICA

Use of Telemetry Tracking



ANY QUESTIONS?

INFO@GAPAFRICAPROJECTS.COM | +44 (0)207 1937819

Pre-Departure Presentation 23

NAMBITI GAME RESERVE

AFRICA

Ecology Trails: Tracks, signs and spoor



ANY QUESTIONS?

INFO@GAPAFRICAPROJECTS.COM | +44 (0)207 1937819

Pre-Departure Presentation 24

NAMBITI GAME RESERVE

AFRICA

Big Five Bush Walk



ANY QUESTIONS?

INFO@GAPAFRICAPROJECTS.COM | +44 (0)207 1937819

Pre-Departure Presentation 25

ABOUT THE PROJECT

AFRICA

Research – Habitat and Prey Selection: Predators

Focus on Lion and Cheetah populations:

GPS coordinates from tracking collars

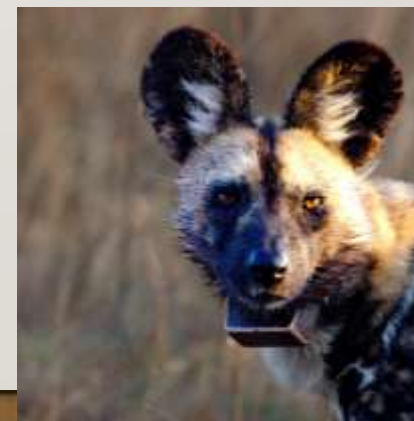
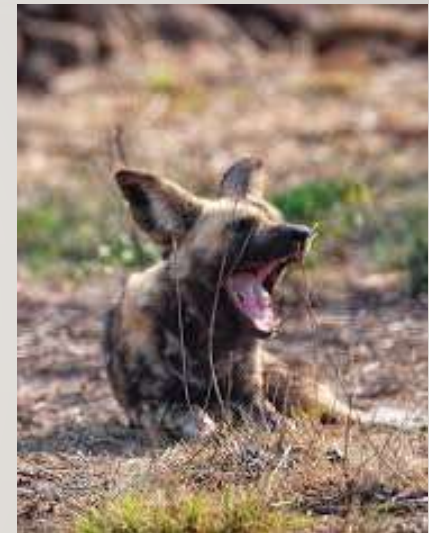
Can be used for movement/spatial/home range analysis



ABOUT THE PROJECT

AFRICA

Introduction of Wild Dog



ANY QUESTIONS?

INFO@GAPAFRICAPROJECTS.COM | +44 (0)207 1937819

Pre-Departure Presentation 27

Wildlife Monitoring – Elephant Impact Assessment

Research into impact of elephant on the eco system:

Matriarch collared so GPS range data available

Herd population data

Elephant impact assessments from February '23

Long term ongoing project looking at elephant impact on vegetation



NAMBITI GAME RESERVE

AFRICA

Rhino Monitoring – Awareness and Anti-Poaching



ANY QUESTIONS?

INFO@GAPAFRICAPROJECTS.COM | +44 (0)207 1937819

Pre-Departure Presentation 29

NAMBITI GAME RESERVE

AFRICA

Camera Trap – Research and Study

Set out own camera traps

Learn about correct placement, best location etc

Never know what we'll find!



NAMBITI GAME RESERVE

AFRICA

Night Game Drives



ANY QUESTIONS?

INFO@GAPAFRICAPROJECTS.COM | +44 (0)207 1937819

Pre-Departure Presentation 31

NAMBITI GAME RESERVE

AFRICA

Community Projects & Zulu Culture

Learn about traditional Zulu culture

Community engagement essential for longterm conservation

Positive impact supporting not for profit initiatives

Projects: Move Africa, Jabong Hats & Rhino Art



ABOUT THE PROJECT

AFRICA

Community – GAP Donation Bags



ANY QUESTIONS?

INFO@GAPAFRICAPROJECTS.COM | +44 (0)207 1937819

Pre-Departure Presentation 33



AFRICA

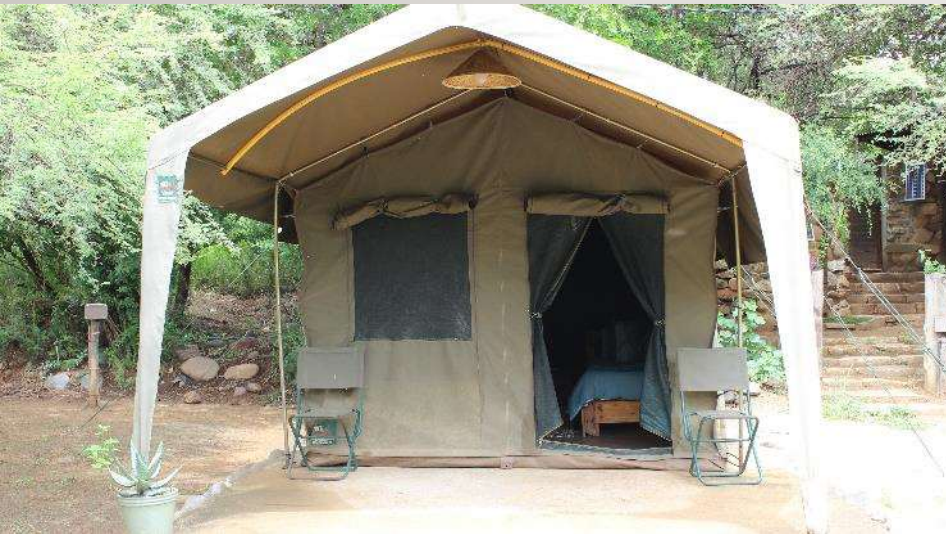
ACCOMMODATION & LIFESTYLE

Life in the African Bush

ACCOMMODATION

AFRICA

Game Reserve Camps - Zingela



ANY QUESTIONS?

INFO@GAPAFRICAPROJECTS.COM | +44 (0)207 1937819

Pre-Departure Presentation 35

ACCOMMODATION

AFRICA

Game Reserve Camps - Zingela



ANY QUESTIONS?

INFO@GAPAFRICAPROJECTS.COM | +44 (0)207 1937819

Pre-Departure Presentation 36

ACCOMMODATION

AFRICA

Game Reserve Camps - Nambiti

In keeping with the Safari Adventure theme, groups are accommodated on the reserve in comfortable safari tents, with communal hot and cold showers and regular flushing toilets. All meals are provided in a communal dining room.



ACCOMMODATION

AFRICA

Game Reserve Camps - Nambiti



ANY QUESTIONS?

INFO@GAPAFRICAPROJECTS.COM | +44 (0)207 1937819

Pre-Departure Presentation 38

ACCOMMODATION

AFRICA

Food at the project

Three meals are provided a day prepared by the kitchen staff.

Breakfasts will consist of toast and cereals; lunch may include pasta, wraps, burgers, stir fry; dinners include meat, fish and vegetables with rice, potatoes or pasta.

On weekends a braai (BBQ) is often organised.

Please advise us of any dietary requirements in advance so we can ensure that you are adequately catered for.



ACCOMMODATION

AFRICA

Food at the project



ANY QUESTIONS?

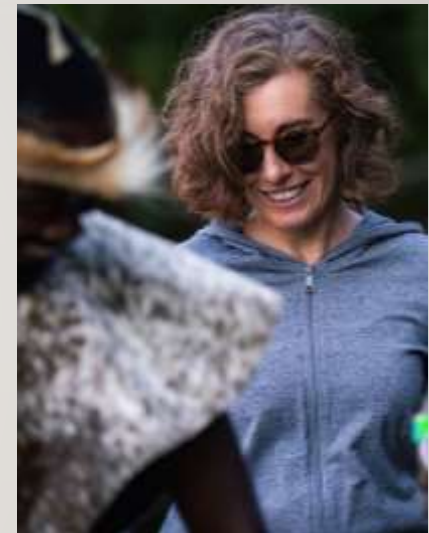
INFO@GAPAFRICAPROJECTS.COM | +44 (0)207 1937819

Pre-Departure Presentation 40

ACCOMMODATION & LIFESTYLE

AFRICA

Life on project – Life long memories



ANY QUESTIONS?

INFO@GAPAFRICAPROJECTS.COM | +44 (0)207 1937819

Pre-Departure Presentation 41

ACCOMMODATION & LIFESTYLE

AFRICA

Life on project – Life long memories



ANY QUESTIONS?

INFO@GAPAFRICAPROJECTS.COM | +44 (0)207 1937819

Pre-Departure Presentation 42

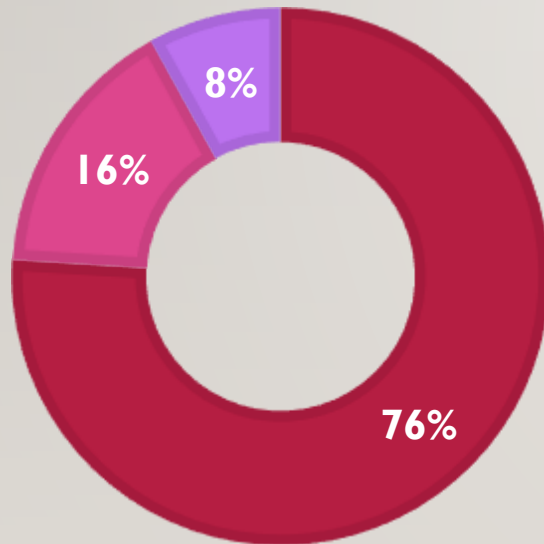
WHY SHOULD I TRAVEL?

AFRICA

Personal Development

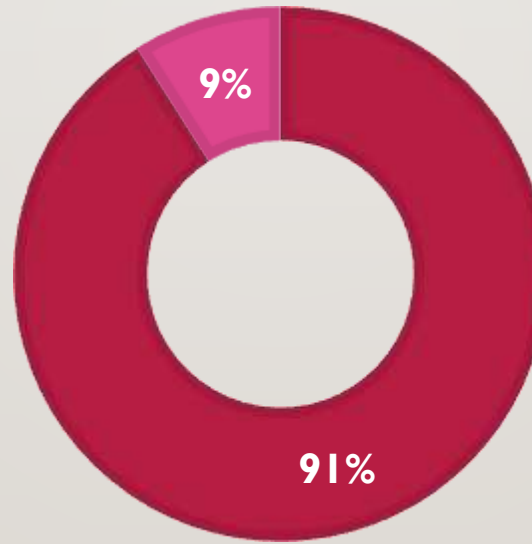
MENTAL HEALTH IMPROVEMENT

■ Yes ■ No ■ NA



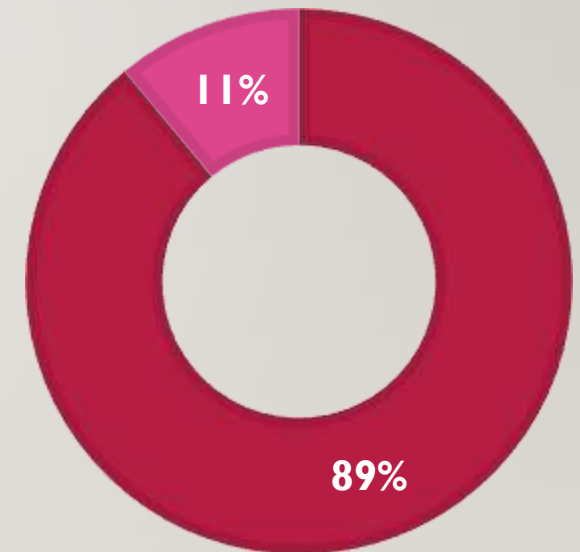
CONFIDENCE IMPROVEMENT

■ Yes ■ No



RESILIENCE IMPROVEMENT

■ Yes ■ No



Reference: GAP Africa Projects Post Project Trip Questionnaire 23/24

TRIP OVERVIEW

AFRICA

University of Chester – Booking Reference 4575

Trip Dates:

27th April – 9th May 2024

International Flights:

EK 0022	27 Apr 25	MAN	DXB	09:50	27 Apr 25	20:00
EK 0767	27 Apr 25	DXB	JNB	23:20	28 Apr 25	05:30
EK 0764	08 May 25	JNB	DXB	19:10	09 May 25	05:25
EK 0017	09 May 25	DXB	MAN	07:25	09 May 25	12:00

Group webpage & booking form

<https://gapafricaprojects.com/4575-cha/>

Project:

Zululand Conservation Research – Zingela Reserve & Nambiti Game Reserve

Trip Cost:

£2,114 per person

- £300.00 Deposit
- £907.00 Instalment due 06/01/2024
- £907.00 Balance due 03/03/2024





GLOBAL reach. **ADVENTURE** for all. **PROJECTS** to inspire.

Explore our network of Global Adventure Projects:



GLOBALADVENTUREPROJECTS.COM

