



Harper Adams University Field Trip Presentation



Zulu Land Conservation Field Trip

AFRICA

GLOBAL reach. **ADVENTURE** for all. **PROJECTS** to inspire.



AFRICA

ZULU LAND PROJECT OVERVIEW

Overview and location
of the project



ABOUT THE PROJECT

AFRICA

Your Conservation Field Trip Explained

- A unique academic conservation experience based in South Africa
- Live and work in the wild of Africa
- The opportunity to experience hands on wildlife conservation
- Experience amazing coastal research
- Bespoke, tailor made projects to suit research requirements
- Project Activities include:
 - Pioneering Conservation Research
 - Conservation Activities
 - Cultural Enrichment
- Full 13 Days in South Africa
- All-inclusive experience
- The most incredible wildlife experience you will ever have

Zulu Land Conservation Research

Our academic team and qualified rangers at the Zulu Land Conservation Project can offer a bespoke course to each institution dependent on their own personal objectives and learning needs. We set out a basis of the trip, comprising of a 10-day academic module split between the two conservation reserves plus a 2-day coastal module.



A full 9-hour day will be planned but will vary from day to day depending on the days task and research goals.

Project split and duration options are as follows:

13 Day Itinerary

Days 1 – 7
Nambiti Big 5 Conservation Research

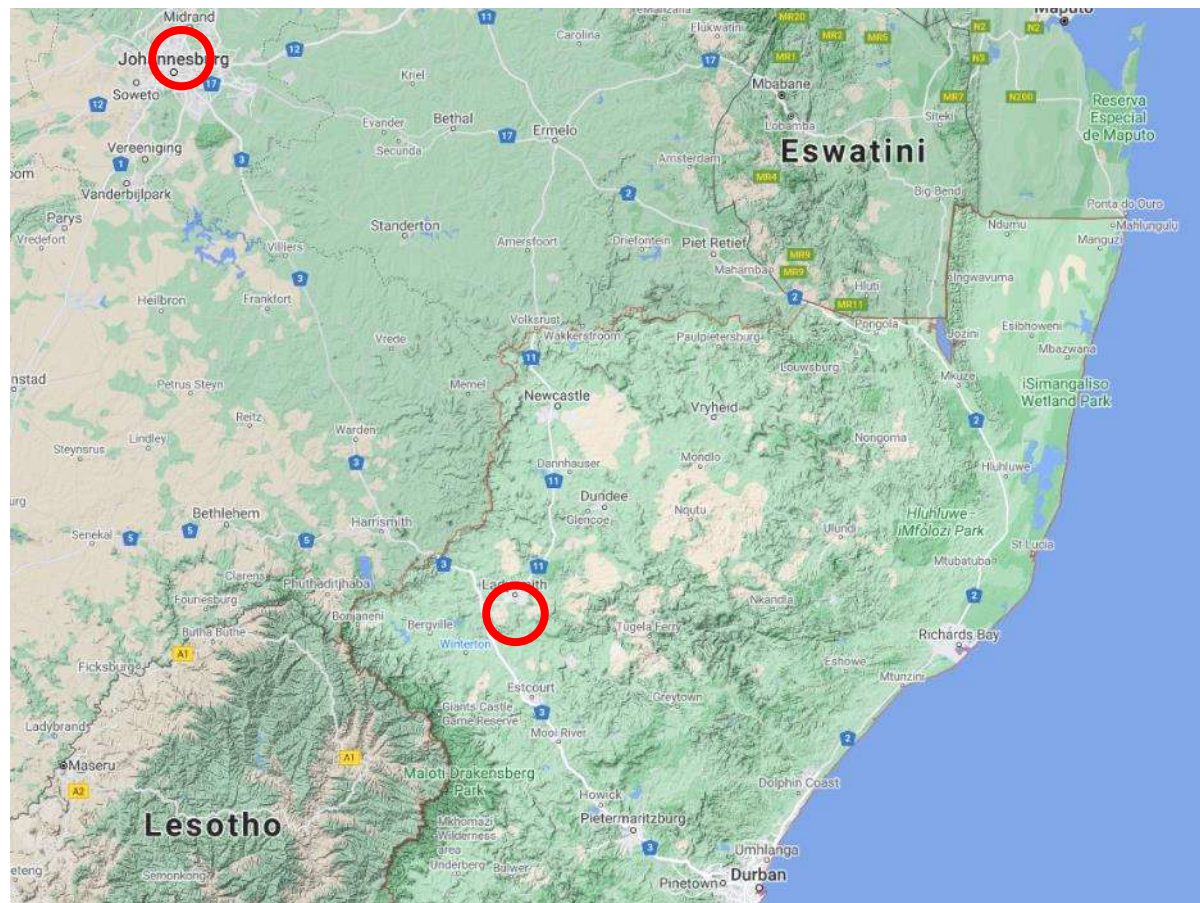
Days 8 – 13
Zingela Wilderness Reserve

ABOUT THE PROJECT

AFRICA

Zulu Land Conservation Project- Location

- South Africa a world leader in conservation
- Malaria free KwaZulu Natal





AFRICA

ABOUT THE PROJECT

Our conservation work
in more detail



ABOUT THE PROJECT

AFRICA

What is a Game Reserve in South Africa?

- A game reserve is a large area of protected land where wildlife is free roaming throughout their natural habitat.
- Reserves are either Government Owned (National Parks) or Privately Owned/Managed.
- Due to physical boundaries, wildlife must be managed due to restraints on population growth, migration and resources.
- Wildlife is protected but also utilised as a tourist attraction (Eco Tourism) which creates funding for conservation efforts and research.



ABOUT THE PROJECT

AFRICA

Nambiti Game Reserve (Days 1 – 7)

Nambiti Game Reserve is a magnificent 23,000 acres of unspoiled wilderness boasting the Big 5 and incredible biodiversity (grasslands, riverine bush, savannah and thornveld) offering unprecedented diversity of wildlife.



ABOUT THE PROJECT

AFRICA

Home to over 40 Species of Mammal



ANY QUESTIONS?

INFO@GAPAFRICAPROJECTS.COM | +44 (0)207 1937819

Presentation 9

NAMBITI GAME RESERVE

AFRICA

Nambiti Research Team



ANY QUESTIONS?

INFO@GAPAFRICAPROJECTS.COM | +44 (0)207 1937819

Presentation 10

NAMBITI GAME RESERVE

AFRICA

Use of Telemetry Tracking



ANY QUESTIONS?

INFO@GAPAFRICAPROJECTS.COM | +44 (0)207 1937819

Presentation 11

NAMBITI GAME RESERVE

AFRICA

Ecology Trails: Tracks, signs and spoors



ANY QUESTIONS?

INFO@GAPAFRICAPROJECTS.COM | +44 (0)207 1937819

Presentation 12

ABOUT THE PROJECT

AFRICA

Research – Habitat and Prey Selection: Predators

Focus on Lion and Cheetah populations:

GPS coordinates from tracking collars

Can be used for movement/spatial/home range analysis

ID kits available or can be created

Information available about management interventions (population changes, contraception etc)



Wildlife Monitoring – Elephant Impact Assessment

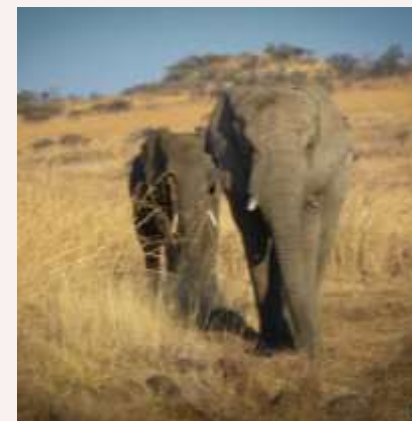
Research into impact of elephant on the eco system:

Matriarch collared so GPS range data available

Herd population data

Elephant impact assessments from February '23

Long term ongoing project looking at elephant impact on vegetation



NAMBITI GAME RESERVE

AFRICA

Rhino Monitoring – Awareness and Anti-Poaching



ANY QUESTIONS?

INFO@GAPAFRICAPROJECTS.COM | +44 (0)207 1937819

Presentation 15

Herbivore: vegetation impact assessment

Annual aerial game count data

Population assessment

Impact on vegetation

Vegetation surveys completed every 5 years

Rainfall data and impact on vegetation

Health conditions and body scoring



Camera Trap – Research and Study

Camera traps & Wifi (+GSM) Security cameras

Used like camera traps

Capture many, especially nocturnal animals

Years of images to be collated



NAMBITI GAME RESERVE

AFRICA

Night Game Drives



ANY QUESTIONS?

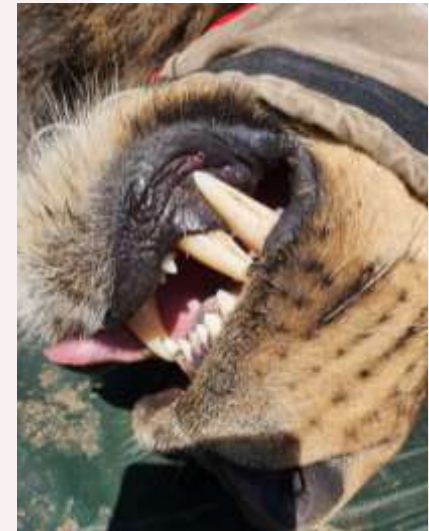
INFO@GAPAFRICAPROJECTS.COM | +44 (0)207 1937819

Presentation 18

NAMBITI GAME RESERVE

AFRICA

Possible Wildlife Interventions



ANY QUESTIONS?

INFO@GAPAFRICAPROJECTS.COM | +44 (0)207 1937819

Presentation 19

NAMBITI GAME RESERVE

AFRICA

Other Research Activities

Academic groups will also have the opportunity to produce their own mini-studies based on current research projects.

This year's group were welcomed to take part in the Aardwolf project and creating posters to present to the group.



NAMBITI GAME RESERVE

AFRICA

Community Projects & Zulu Culture

A chance for academic groups to meet the locals living around the game reserves

A chance to meet chiefs and see traditional Zulu culture first hand

Projects: Move Africa, Jabong Hats & Rhino Art



ABOUT THE PROJECT

AFRICA

Community – GAP Donation Bags



ANY QUESTIONS?

INFO@GAPAFRICAPROJECTS.COM | +44 (0)207 1937819

Presentation 22

ABOUT THE PROJECT

AFRICA

Zingela River Safari (Days 8 – 13)

Zingela Wildlife Reserve covers 12,500 acres of predator free, pristine African bushveld. You will have the opportunity to be involved with the research that takes place at the property;. You will also have the chance to participate in a host of activities during your stay.



ANY QUESTIONS?

INFO@GAPAFRICAPROJECTS.COM | +44 (0)207 1937819

Presentation 23

NAMBITI TO ZINGELA

AFRICA



ANY QUESTIONS?

INFO@GAPAFRICAPROJECTS.COM | +44 (0)207 1937819

Presentation 24

Giraffe Migration and Research Project

Population data and database for individuals

Migration and range data through unfenced territories

Diet and vegetation impact assessment

Genetic diversity



River Assessments – Eel Project

Fresh water eel project –
understanding life cycle using GPS
data

Fish tagging and release

Collecting biometric data

SASS – South African Scoring System



Reptile Research and Trapping

Data collection started in 2022 with annual projects planned

Species frequency

Herpetofauna succession during vegetation rehabilitation

Comparing herpetological diversity



ZINGELA WILDERNESS RESERVE

AFRICA

Educational Bush Walks – Ecology and Botany



ZINGELA WILDERNESS RESERVE

AFRICA

River Safari – Rafting and Kayaking



ANY QUESTIONS?

INFO@GAPAFRICAPROJECTS.COM | +44 (0)207 1937819

Presentation 29

ZINGELA WILDERNESS RESERVE

AFRICA

Abseiling and Rock Climbing



ANY QUESTIONS?

INFO@GAPAFRICAPROJECTS.COM | +44 (0)207 1937819

Presentation 30



AFRICA

ACCOMMODATION & LIFESTYLE

Life in the African Bush

Game Reserve Camps - Nambiti

In keeping with the Safari Adventure theme, groups are accommodated on the reserve in comfortable safari tents, with communal hot and cold showers and regular flushing toilets. All meals are provided in a communal dining room. If student opt to sleep out there are basic camps around the reserve that can be used for sleep outs; Sleeping out under the stars and learn how to make a fire and cook on it!



ACCOMMODATION

AFRICA

Game Reserve Camps - Zingela



ANY QUESTIONS?

INFO@GAPAFRICAPROJECTS.COM | +44 (0)207 1937819

Presentation 33

Food at the project

Three meals are provided a day prepared by the kitchen staff.

Breakfasts will consist of toast and cereals; lunch may include pasta, wraps, burgers, stir fry; dinners include meat, fish and vegetables with rice, potatoes or pasta.

On weekends a braai (BBQ) is often organised.

Please advise us of any dietary requirements in advance.



ACCOMMODATION & LIFESTYLE

AFRICA

Life on project – Life long memories



Previous Harper Adams Students

AFRICA

Quotes from the 2024 Project

- “Such an unreal experience! The staff and rangers involved made the trip so memorable, the knowledge and experience they provided was well over my expectations!” **C Boydell**
- “Incredibly so I learned a lot of fauna species” **A Barnacle**
- “I have never been so calm and destressed in my life. When working in the reserve it didn’t seem to matter what was going on beyond the valley... Bliss” **J Woollard**
- “I did not expect to be hiking 8km in 38 degrees or white water rafting in rapids alone, but I had so much fun doing it and felt so satisfied with myself” **H Thompson**

ACCOMMODATION & LIFESTYLE

AFRICA

A true life experience



ANY QUESTIONS?

INFO@GAPAFRICAPROJECTS.COM | +44 (0)207 1937819

Presentation 37

ACCOMMODATION & LIFESTYLE

AFRICA

A true life experience



ANY QUESTIONS?

INFO@GAPAFRICAPROJECTS.COM | +44 (0)207 1937819

Presentation 38



AFRICA

BOOKING YOUR ADVENTURE

The next steps to the trip of a
lifetime!



BOOKING YOUR ADVENTURE

AFRICA



Proposed dates & key deadlines

Proposed trip dates are:

Depart UK: 19th February | Arrive SA: 20th February 2025

Depart SA: 5th March | Arrive UK: 6rd March 2025

Trip cost:

£2,295.00

Key deadlines are:

- Return of booking forms or online application by: 12/07/2024
- Deposit of £300 to confirm placement
- Instalment payment of 50% due 16 weeks before departure
- Balance payment due 8 weeks before departure
- E tickets will be issued 2 weeks prior to departure and emailed to students

What is Included?

- Flights
- Transfers to/from project
- Accommodation
- Three meals per day
- All activities as part of the project
- ATOL protection
- Airport meet/greet
- 24/7 In country support

NOT Included

- Personal Travel Insurance *
- Meals on travel days – before arriving & after departing from project
- Any activities not specified as part of the project
- Visa's/travel documents

* We recommend that you take out personal travel insurance as soon as your booking is confirmed.

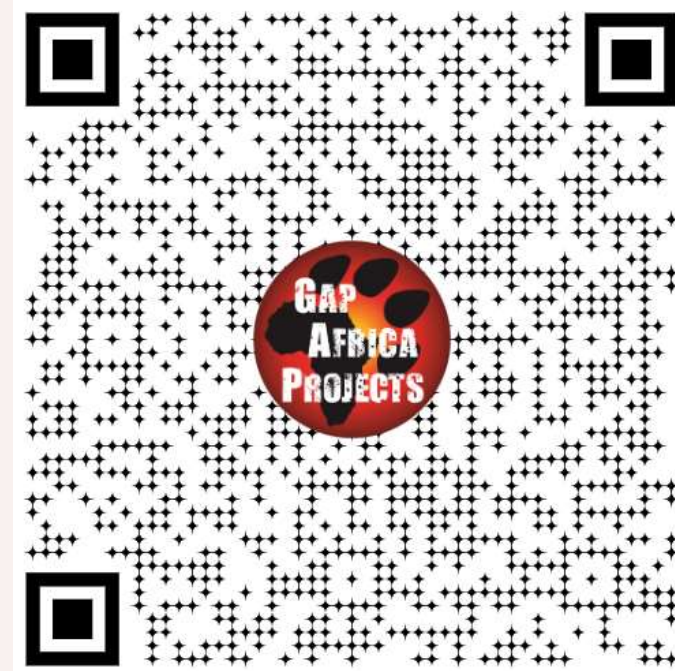
BOOKING YOUR ADVENTURE

AFRICA

Group Web Page



Booking Form



<https://gapafricaprojects.com/4476-haa/>



GLOBAL reach. **ADVENTURE** for all. **PROJECTS** to inspire.

Explore our network of Global Adventure Projects:



GLOBALADVENTUREPROJECTS.COM



ABOUT US:

AFRICA

GAP Africa Projects

- We are a specialised travel company that offers academic trips and volunteering opportunities for groups and individual travellers, in a number of locations worldwide
- We pride ourselves on curating experiences which are personalised to your needs and requirements
- Our first project travelled in 2010
- Full ATOL Bonding
- Working with 50 Colleges and Universities around the UK
- Over 1,000 students will travel with us in 2024
- A small dedicated team in the UK and South Africa.

