



# Bishop Burton College

## PROJECT INFORMATION PACK



# Canary Islands

## Welfare & Research Expedition



**GLOBAL** reach. **ADVENTURE** for all. **PROJECTS** to inspire.

# TRIP OVERVIEW



## Bishop Burton College– Booking Reference 4642

### Trip Dates:

18<sup>th</sup> May – 25<sup>th</sup> May 2025

### Flights:

Flight No	Flight Date	Dept.	Dept. Time	Arr.	Arr. Time
LS0919	18/05/2025	Manchester (MAN)	10:00	Tenerife (TFS) South	14:40
LS0920	25/05/2025	Tenerife (TFS) South	21:30	Manchester (MAN)	02:05 + 1 Day

\*Always check the flight timings on your final documents

### Project:

Canary Island Welfare & Research Expedition

### Trip Cost:

£1450 per person

- £300.00 Deposit
- £575.00 Instalment due 26/01/2025
- £575.00 Balance due 23/03/2025



# ABOUT THE PROJECT

Location and project content



# ABOUT THE PROJECT

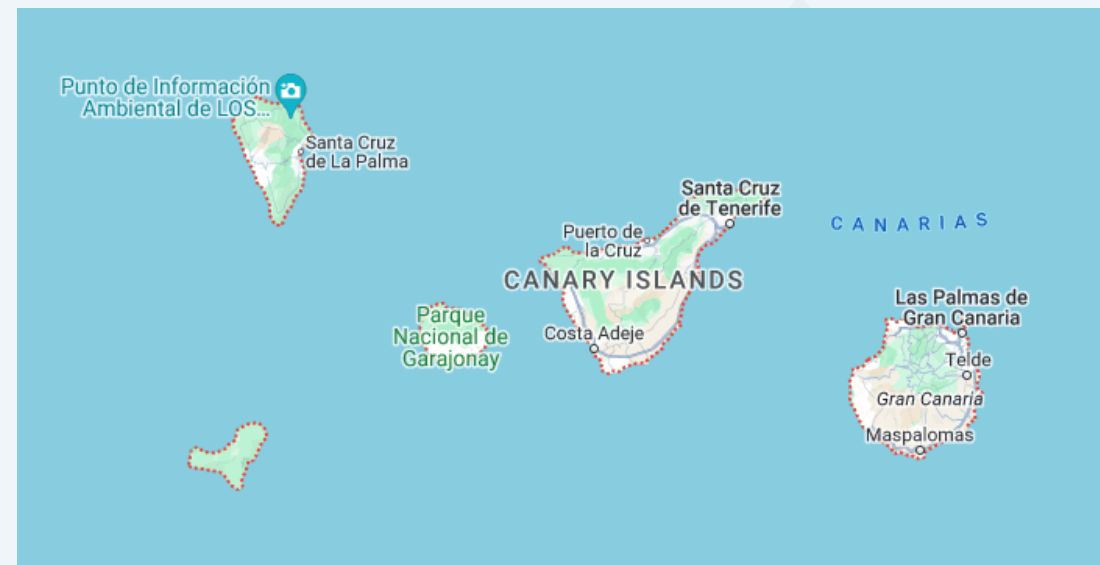
EUROPE

## The Canary Islands

The Canary Islands, an archipelago off the northwest coast of Africa, are part of Spain and known for their diverse landscapes and subtropical climate. The eight main islands—Tenerife, Gran Canaria, Lanzarote, Fuerteventura, La Palma, La Gomera, El Hierro, and La Graciosa—each offer a unique experience.

Tenerife, the largest island, is home to Mount Teide, Spain's highest peak and an active volcano. Fuerteventura boasts stunning sandy beaches, while Lanzarote is famous for its volcanic scenery. La Palma is renowned for stargazing under some of Europe's clearest skies.

With a rich blend of Spanish, African, and Latin American cultural influences, the islands are known for their vibrant festivals, local cuisine, and music. The warm, year-round climate makes the Canaries perfect for activities like hiking, surfing, and diving. The combination of natural beauty, adventure, and cultural richness makes the Canary Islands a top destination.



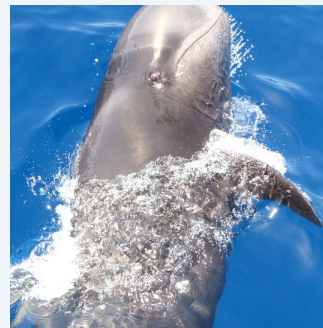
# ABOUT THE PROJECT

EUROPE



## Your Welfare and Research Programme

- Work with the Atlantic Whale and Dolphin Foundation
- Help monitor and conduct research into whales and dolphins found in the waters around the Island of Tenerife
- Working in animal rescue/welfare centres on the island
- Help support staff in providing quality care and attention to a range of animals in the centres.
- Investigate how different centres respect and respond to different behaviour exhibited.
- Possible visit to the zoo's on Tenerife to appraise their strengths and weakness
- Possible study the effects of cetaceans in the Islands zoo
- Spend an evening star gazing in one of the best places in the world to stargaze
- Explore the islands diverse forest on a trek
- A visit to Teide National Park



# ABOUT THE PROJECT



## Atlantic Whale and Dolphin Foundation

The Atlantic Whale and Dolphin Foundation (AWdF) is a non-profit organisation focused on the conservation of whales, dolphins, and marine ecosystems, primarily in the Canary Islands.

Founded to protect these species and their habitats, the AWdF promotes sustainable tourism, research, and education. Through volunteer programs, the foundation engages people in monitoring and conserving marine life, while raising awareness about the importance of marine biodiversity.

Their work includes supporting ethical whale and dolphin watching, conducting scientific research, and fostering a deeper understanding of marine conservation issues among the public and volunteers.

You will spend your time helping to collect data on the bottlenose dolphins, pilot whales and other migratory species. This could include general cetacean behaviour, acoustic information and interspecies communication, family structure and social roles and potential impacts. GIS will be used for the data collection.



# ABOUT THE PROJECT



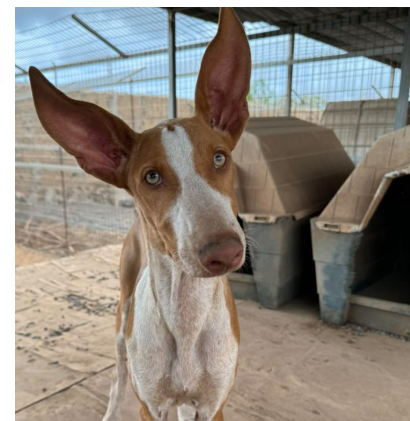
## Animal Rescue Centres

Animal rescue centres in Tenerife play a vital role in the protection and rehabilitation of wildlife and domestic animals on the island.

These centres, such as Monkey Park and Tenerife Horse Rescue, provide sanctuary for abandoned, injured or mistreated animals, offering them care and rehabilitation. They focus on the conservation of local wildlife, exotic and farm animals, often through volunteer support and public donations.

In addition to rescue and rehabilitation, many of these centres engage in educational programmes, raising awareness about animal welfare, sustainable practices, and the importance of preserving the natural habitats of Tenerife's fauna.

Your time will be spent helping the centres in improving the lives of the animals in their care.



# ABOUT THE PROJECT

EUROPE



## Forest Treks

Forest treks in Tenerife offer a chance to explore the island's lush and diverse landscapes, especially in areas like the Anaga Rural Park and the Corona Forestal Natural Park. These treks lead hikers through ancient laurel forests, pine woodlands and rugged mountain paths, showcasing Tenerife's unique flora and fauna.

Anaga is known for its misty forests, steep ravines and dramatic views, while the Corona Forestal surrounds Mount Teide, offering trails with volcanic scenery and dense pine forests. Along the way, trekkers can encounter endemic plants, birds and breathtaking vistas, making these hikes a perfect blend of nature and adventure.





# ABOUT THE PROJECT



## Stargazing

Tenerife is one of the world's top stargazing destinations, thanks to its clear skies, high altitude and minimal light pollution. The island's unique geographical location and protected skies make it an ideal spot for observing stars, planets and other celestial phenomena.

Mount Teide, Tenerife's highest peak, is a prime location for stargazing. At over 2,300 meters above sea level, it offers an unobstructed view of the night sky. Teide National Park is home to several observatories that attract astronomers from around the world. Visitors can join guided stargazing tours, where telescopes and expert guides reveal the wonders of the universe, including constellations, the Milky Way and distant galaxies.

Tenerife's dark, starry nights make it an unforgettable experience for both amateur and professional astronomers alike.



# ABOUT THE PROJECT



## Las Canadas

Las Cañadas, also known as Las Cañadas del Teide, is a vast volcanic caldera located in Teide National Park, Tenerife. It forms a massive natural basin, roughly 17 kilometers in diameter, surrounding the iconic Mount Teide, Spain's highest peak. The caldera was formed through volcanic activity and erosion over millions of years and is now a stunning landscape of rugged rock formations, lava fields and unique volcanic features.

Las Cañadas is a popular destination for hikers, nature lovers, and geology enthusiasts, offering trails that explore its otherworldly terrain.



# ABOUT THE PROJECT



## Itinerary

- ❖ Day 1 – Arrive for your flight to Tenerife. Upon arrival, head to your accommodation and settle in for the evening.
- ❖ Day 2 – Enjoy a full-day introduction to Tenerife, exploring its rich history, vibrant culture, diverse nature and unique ecosystems.
- ❖ Day 3 – In the morning, head out to sea for whale and dolphin observation whilst collecting valuable data. In the afternoon you will be volunteering at a local animal rescue centre.
- ❖ Day 4 – Begin the day working at the animal rescue centre. Later, embark on a scenic forest trek, concluding with a magical evening of stargazing under Tenerife's clear skies.
- ❖ Day 5 – Start early with a visit to one of Tenerife's renowned zoos, where you can explore conservation efforts and encounter a variety of animals.
- ❖ Day 6 – Another morning on the boats, continuing your whale and dolphin research. Return to the animal rescue centre in the afternoon for more hands-on volunteer work.
- ❖ Day 7 – Pack and prepare for your return flight to the UK, taking with you unforgettable memories of your time in Tenerife.





# USEFUL INFORMATION

Details on accommodation,  
what's included &  
recommended kit list



# ACCOMMODATION & LIFESTYLE

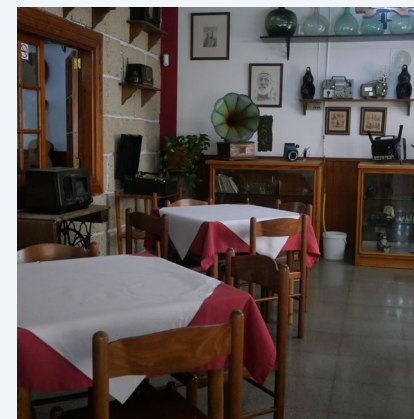
EUROPE



## El Sombrero

Nestled in the picturesque mountain town of Vilaflor, El Sombrero offers a traditional Canarian experience. This charming hotel provides simple yet comfortable accommodation, featuring shared rooms with en-suite bathrooms.

Enjoy a taste of both worlds during your stay, as the delicious meals combine traditional Canarian cuisine with familiar English dishes.



ANY QUESTIONS?

[INFO@GAPAFRICAPROJECTS.COM](mailto:INFO@GAPAFRICAPROJECTS.COM) | +44 (0)207 1937819

INFORMATION PACK 13

# WHAT'S INCLUDED

EUROPE



## What is included?

- Flights
- Transfers to/from project
- Accommodation
- Breakfast and Dinner
- All activities as part of the project
- ATOL protection
- Airport meet/greet
- 24/7 In emergency contact

## NOT Included

- Personal Travel Insurance \*
- Meals on travel days – before arriving & after departing from the project.
- Lunches
- Any activities not specified as part of the project
- Visa's/travel documents
- Tips

\* We recommend that you take out personal travel insurance as soon as your booking is confirmed.





## Suggested kit list

- Short sleeve shirts
- Long work trousers and shorts  
(Or work trousers with zip-off long)
- T shirts
- Hiking boots/comfortable walking shoes to work in every day
- Rain jacket
- Sweatshirt/fleece (Winter months pack plenty)
- Padded parka jacket/windbreaker –(it can get very cold on the boats even in summer)
- Daypack rucksack
- Socks
- Hat for sun protection / Warm Hat (winter only)
- Working gloves
- Changes of casual clothes for evenings
- Underwear
- Sandals / comfy shoes to wear after work hours
- Beach towel
- Swimwear
- Toiletries
- Tick/insect repellent
- Personal medical items and First Aid Kit
- Binoculars
- Sunscreen & sunglasses

### Other useful items:

- Good torch
- Water bottle
- Camera
- Spare batteries
- Mammal/bird book
- Notebook/diary and pen
- Lip balm

All work clothes should be neutral or earth tones for working at the project  
No skimpy or bright-coloured clothing to be worn.



**GLOBAL** reach. **ADVENTURE** for all. **PROJECTS** to inspire.

Explore our network of Global Adventure Projects:



[GLOBALADVENTUREPROJECTS.COM](http://GLOBALADVENTUREPROJECTS.COM)

