



PROJECT INFORMATION PACK

Abingdon & Witney College



Sibuya

Conservation Experience



GLOBAL reach. **ADVENTURE** for all. **PROJECTS** to inspire.

TRIP OVERVIEW

AFRICA

Abingdon & Witney College – Booking Reference 4621

Trip Dates:

3rd – 18th August 2025

Flights:

Flight No	Flight Date	Dept.	Dept. Time	Arr.	Arr. Time
EK030	03/08/2025	London Heathrow (LHR)	16:50	Dubai (DXB)	02:45
EK761	04/08/2025	Dubai (DXB)	04:05	Johannesburg (JNB)	10:15
TBC	04/08/2025	Johannesburg (JNB)	TBC	Port Elizabeth (PLZ)	TBC
TBC	17/08/2025	Port Elizabeth (PLZ)	TBC	Johannesburg (JNB)	TBC
EK766	17/08/2025	Johannesburg (JNB)	22:20	Dubai (DXB)	08:20
EK029	18/08/2025	Dubai (DXB)	09:40	London Heathrow (LHR)	14:25

*Always check the flight timings on your final documents

Baggage Allowance – 1 piece of checked baggage @ 20kgs & 1 piece of hand baggage @ 7kgs and max dimensions 56x36x25 cms

Project:

Sibuya Conservation Experience



AFRICA

ABOUT THE PROJECT

Our conservation work
in more detail

ABOUT SIBUYA GAME RESERVE

AFRICA

Sibuya Game Reserve

Sibuya is a Malaria-free Eco destination, on the Eastern Cape's Sunshine Coast, between Port Elizabeth and East London.

Sibuya Game Reserve incorporates the unique East Cape Valley Bushveld, Grasslands and Coastal Forests. Antelope abound, including the rare Bontebok and Oribi. Elephants, giraffe and plains zebra silhouetted against an Indian Ocean backdrop complete a truly memorable picture.

The ancient floodplains and pristine coastal forest host an abundance of wildlife: nearly 400 bird species and 45 species of recorded wildlife including the "Big Five". The lush vegetation ensures a high density of animals and special game-viewing experiences are guaranteed.



YOUR PROJECT

AFRICA

The **Sibuya Wilderness Experience** offers students and participants the unique and exciting opportunity to get hands-on experience in the conservation efforts of Sibuya Game Reserve.

The team of passionate conservationists work tirelessly to save endangered and threatened terrestrial and marine wildlife from extinction.

Students will take part in short and long-term projects which are intended to create sustainability for generations to come. Tasks may vary from physical work to interesting and interactive lecture-based content.

The newly launched Programme focuses on an impactful rescue and anti-poaching scope for wildlife and a strong marine conservation aim. By exposing participants to the conservation work and nurturing in them a hands-on mentality, the team believe they can make a difference.

Conservation does not stop at conserving nature alone but includes a responsibility to uplift local and impoverished communities. This responsibility includes environmental education of the community as to its role in and the benefits of conserving biodiversity and further stresses the importance of conserving natural resources.



ANY QUESTIONS?

INFO@GAPAFRICAPROJECTS.COM | +44 (0)207 1937819

INFORMATION PACK 5

Your Conservation Programme

- Lion monitoring
- Elephant monitoring
- Rhino monitoring
- Ocean Research Institute fish tagging
- Fencing and Alien Plant clearing
- Community Outreach
- Coastal Dunes and Rocky Shores
- Kayak Expedition 15km
- Pitfall trap insect collection and Identification
- Starry Night Constellation Observation
- SANCCOB visit

Presentations and Talks on:

- Lion Conservation
- Elephant Ecology
- Rhino Conservation
- Ornithology (Birds)

Conservation Programme – The Bush

There is so much opportunity in this newly established and expanding reserve. They are in the process of incorporating more land, and 'rewilding' needs to take place, so students are exposed to unique hands-on conservation and monitoring.

Key species monitoring: This involves locating the ecologically significant terrestrial species (**elephant, white rhino, lion**), identifying individuals using identikits and then monitoring their behaviour.

Reserve maintenance: fence and road maintenance as well as alien plant removal are important tasks on the reserve where students will have a chance to be physical and get their hands dirty.

Insect surveys: Pitfall traps are wonderful tools to collect data on insects, reptiles and anything else crawling along the ground. From digging the holes to finding the specimens and identifying them – students will be part of this exciting research.



Conservation Programme – Ocean and Estuary

The unique aspect of this reserve is that it is accessible by boat along the Kariega River and incorporates the river, estuary and ocean – all important contributions to Sibuya’s biodiversity and for which the team have a great responsibility to conserve.

Fish Tagging – Students have the wonderful opportunity to contribute to a National fish tagging project. They will learn how to safely catch, tag, record data, and release the sensitive estuarine fish species.

Rocky shores and coastal dunes – Learn about and monitor the coastal marine environment’s biodiversity which includes the largest dunes in the southern hemisphere!

Outreach Project – This takes place with the coastal village’s community and an important aspect is the beach and riverside clean-up.



YOUR PROJECT

AFRICA

Sample Itinerary

Week 1

Day 1: Arrival and settling into accommodation

Day 2: Welcome presentation, elephant monitoring, elephant conservation talk, camera trap set up

Day 3: Rhino conservation talk, rhino monitoring

Day 4: Fence management, alien plant removal

Day 5: Bird count, ornithology presentation

Day 6: Community outreach (delivering dog food), town trip

Day 7-8: Leisure time/adventure activities

Week 2:

Day 9: Lion conservation presentation, lion monitoring, buffalo management

Day 10-11: Alexandria Dune Trail, rocky shore practical

Day 12: Fish Tagging, Boat cruise

Day 13: Wildlife monitoring drive and picnic

Day 14: Camera trap collections and farewell dinner

Day 15: Team breakfast and depart



OPTIONAL WEEKEND EXCURSIONS

AFRICA



Weekend Options
will be sent in
advance of your
departure.

Pre-Booked or
Paid Locally





AFRICA

ACCOMMODATION & LIFESTYLE

Life in the African Bush

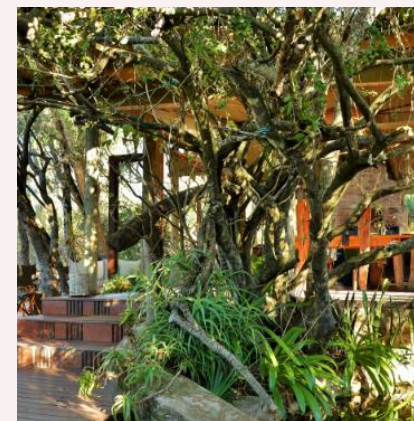
ACCOMMODATION & LIFESTYLE

AFRICA

Sibuya – River Camp

Together with the team, the group will be accommodated and hosted at the beautiful River Camp. Happy chilled vibes.

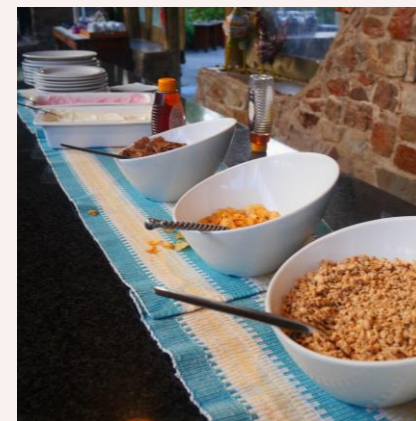
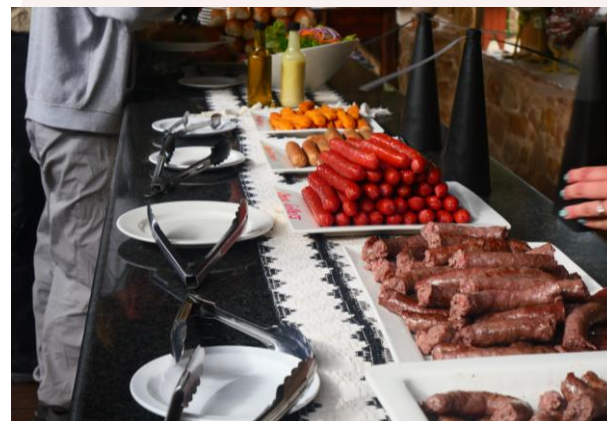
Participants will share comfortable four bedded rooms with en-suite bathrooms, including full board (3 meals a day).



ACCOMMODATION & LIFESTYLE

AFRICA

Food on the Project



ANY QUESTIONS?

INFO@GAPAFRICAPROJECTS.COM | +44 (0)207 1937819

INFORMATION PACK 13

ACCOMMODATION & LIFESTYLE

AFRICA

Life on the Reserve



ANY QUESTIONS?

INFO@GAPAFRICAPROJECTS.COM | +44 (0)207 1937819

INFORMATION PACK 14

PHOTO GALLERY

AFRICA

Sibuya Wilderness Experience



ANY QUESTIONS?

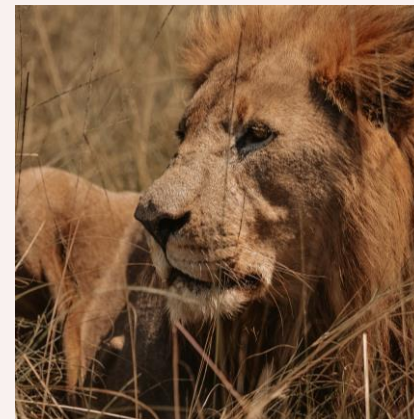
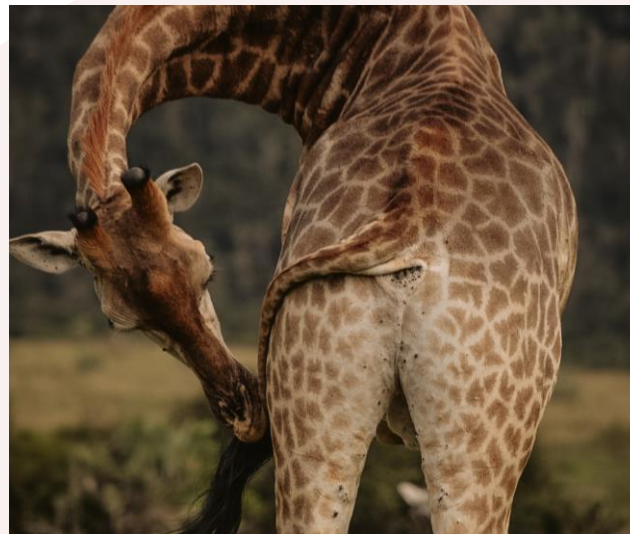
INFO@GAPAFRICAPROJECTS.COM | +44 (0)207 1937819

INFORMATION PACK 15

PHOTO GALLERY

AFRICA

Sibuya Wilderness Experience



ANY QUESTIONS?

INFO@GAPAFRICAPROJECTS.COM | +44 (0)207 1937819

PRE DEPARTURE INFORMATION 16



AFRICA

USEFUL INFORMATION

Inclusions/Exclusions &
Recommended Kit List

WHAT'S INCLUDED

AFRICA

What is included?

- Flights
- Transfers to/from project
- Accommodation
- Three meals per day
- All activities as part of the project
- ATOL protection
- Airport meet/greet
- 24/7 In country support

NOT Included

- Personal Travel Insurance *
- Meals on travel days – before arriving & after departing from project
- Any activities not specified as part of the project
- Visa's/travel documents
- Tips

* We recommend that you take out personal travel insurance as soon as your booking is confirmed.



Suggested kit list

- Short and long sleeve T shirts *
- Long work trousers and shorts *
(Or work trousers with zip-off longs)
- Hiking Boots/comfortable walking shoes to work in every day
- Rain jacket
- Sweatshirt/Fleece (Winter months pack plenty)
- Padded parka jacket/windbreaker - warm
(it can get very cold on an open vehicle - even on a summer evening)
- Daypack rucksack
- Sleeping Bag - for sleep out / camping in summer months
(extra warmth in winter)
- Socks
- Warm Hat (winter only) /Hat for sun protection (all year round)
- Working gloves
- Gloves for warmth (winter only)
- Water bottle (filtered rainwater provided at the lodge)

* All work clothes should be neutral or earth tones for working in the bush. No skimpy or bright coloured clothing to be worn.

- Changes of casual clothes for evenings
- Underwear
- Sandals / comfy shoes to wear after work hours
- Beach towel
- Swimming costume
- Toiletries
- Tick / insect repellent

Other useful items:

- Binoculars
- Good torch
- Camera
- Spare batteries
- Sunglasses
- Personal medical items/First Aid kit
- Sunscreen
- Mammal/bird book
- Notebook/diary and pen



GLOBAL reach. **ADVENTURE** for all. **PROJECTS** to inspire.

Explore our network of Global Adventure Projects:



GLOBALADVENTUREPROJECTS.COM

