



# Reaseheath College Project Information Pack



## KwaZulu-Natal Conservation Research

**GLOBAL** reach. **ADVENTURE** for all. **PROJECTS** to inspire.



# TRIP OVERVIEW

AFRICA

## Reaseheath College – Booking Reference 4606

### Trip Dates:

6th July – 19th July 2025

### Flights:

Flight No	Flight Date	Dept.	Dept. Time	Arr.	Arr. Time
EK022	06/07/2025	Manchester (MAN)	09:50	Dubai (DXB)	20:00
EK767	06/07/2025	Dubai (DXB)	23:20	Johannesburg (JNB)	05:30 + 1 Day
EK764	19/07/2025	Johannesburg (JNB)	19:10	Dubai (DXB)	05:25 + 1 Day
EK017	20/07/2025	Dubai (DXB)	07:25	Manchester (MAN)	12:00

**Baggage Allowance** – 2 pieces of checked baggage @23kgs, 1 piece of hand baggage @ 7kgs max dimensions 55x38x22 cms

### Project:

KwaZulu-Natal Conservation Research – Nambiti Game Reserve & Zingela Wilderness Reserve

### Trip Cost:

£2350.00 per person (to be confirmed once flights are available)

- £300.00 Deposit
- £1025.00 Instalment due 17/03/2025
- £1025.00 Balance due 12/05/2025



**AFRICA**

# **ABOUT THE PROJECT**

Overview and location  
of the project



# ABOUT THE PROJECT

AFRICA

## KwaZulu-Natal Conservation Research

Our academic team and qualified rangers at the KwaZulu-Natal Conservation Research Project offer a bespoke course to each institution dependent on their own personal objectives and learning needs.

We set out the basis of the trip, comprising of a 12-day academic module split between the two conservation reserves



A full day will be planned but will vary from day to day depending on the day's task and research goals.

The project split and duration are as follows:

### 12 Day Itinerary

Days 1 – 6

Nambiti Big 5 Conservation Research

Days 6 – 12

Zingela Wilderness Conservation and Adventure Activities

# ABOUT THE PROJECT

AFRICA

## Nambiti Game Reserve (Days 1 – 6)

**Nambiti Game Reserve** is a magnificent 23,000 acres of unspoiled wilderness boasting the Big 5 and incredible biodiversity (grasslands, riverine bush, savannah and thornveld) offering an unprecedented diversity of wildlife.



# ABOUT THE PROJECT

AFRICA

## Zingela River Safari (Days 6 – 12)

**Zingela Wildlife Reserve** covers 12,500 acres of predator free, pristine African bushveld. You will have the opportunity to be involved with the research that takes place at the property. There is also the opportunity to participate in a host of adventurous activities during your stay such as, rafting and abseiling.



ANY QUESTIONS?

[INFO@GAPAFRICAPROJECTS.COM](mailto:INFO@GAPAFRICAPROJECTS.COM) | +44 (0)207 1937819

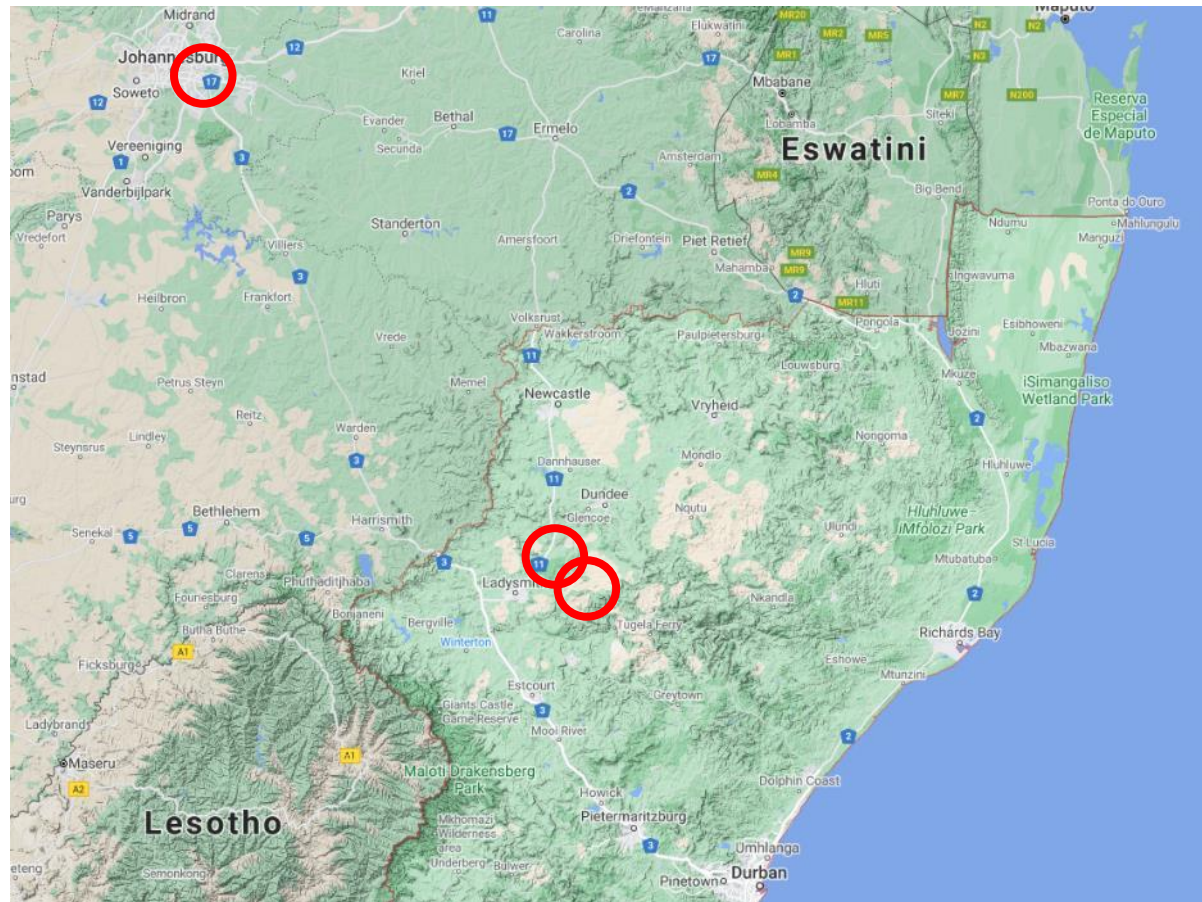
INFORMATION PACK 6

# ABOUT THE PROJECT

AFRICA

## KwaZulu-Natal Conservation Project- Location

South Africa a world leader in conservation





AFRICA

# 6 Days at Nambiti Game Reserve

A Big Five Game Reserve





# YOUR PROJECT

AFRICA

## Your Conservation Programme – Nambiti

Students will be taught and work alongside the field guides and conservation team. The following examples depict the day-to-day activities that may be undertaken as part of the project at Nambiti.

- Alien Vegetation Control & Reserve Maintenance
- Use of Telemetry Tracking
- Elephant Monitoring / Population Study
- Rhino Monitoring – Awareness
- Anti-poaching talk and fence walk
- Camera Trapping
- Night Drive
- Big Five Bush Walk
- Habitat and Prey Selection of Predators
- Tracks, Signs and Spoor
- Community Development



## Additional Research Projects

### Aardwolf Research

A new project for 2024/25 monitoring the aardwolf on Nambiti. Aardwolf are a nocturnal, insectivorous species of hyena. Through night drives, camera traps and collaring we hope to gain a better understanding of the species and their behaviour. Termite mounds have also been logged as well as possible den sites along fence lines

### Birds of prey research

Identification of a key species on the reserve. Epicollect forms have been made, these forms contain nest sites, locations, GPS coordinates, species, number, road name.

### Animal Vigilance in Antelope: Response to Predation Risk

Focusing on vigilance behaviour in antelope, specifically impala and blue wildebeest, as a predator avoidance strategy. This study is particularly timely with the planned introduction of cheetah and African wild dogs onto the reserve, providing a unique opportunity to observe changes in antelope vigilance in response to increased predation threats



## Research Projects

**Small Predator Management** - All species need to be identified, mainly via camera trapping. A catalogue of animals is being made so we can identify as many individuals as possible on the reserve. More information is desperately required by the reserve, especially in relation to prey species.

**Large Predator Management** - Lion, Leopard, Spotted Hyena, Brown Hyena and Caracal have an impact that needs to be identified and recorded. Mapping their home ranges and activities.

**Conservation Management** - Aspects of the physical management of the environment and other supporting infrastructure needed to manage a game reserve. Fencing, road and tracks, erosion, planning and mapping.

**Mega Herbivore Management** - Feeding habits and their impact on the ecosystem need to be reported on.



# YOUR PROJECT

AFRICA

## Community Projects & Zulu Culture

A chance for academic groups to meet the locals living around the game reserves

The opportunity to meet chiefs and experience traditional Zulu culture first hand

Projects: Move Africa, Jabong Hats, Project Rhino and Rhino Art





AFRICA

# 6 Days at Zingela Nature Reserve

River Research and Adventure



## Your Conservation Programme – Zingela

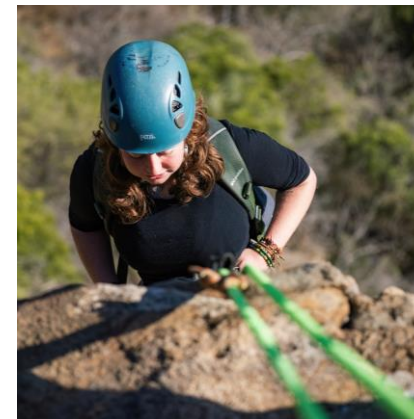
Students will be taught and work alongside the field guides and scientific team. The following examples depict the day-to-day activities that may be undertaken as part of the project at Zingela Reserve.

- Spatial Distribution and Habitat use of species
- Use of Telemetry Tracking
- Giraffe Migration and Conservation Project
- Reptile Pit Fall Traps
- Freshwater Ecology
- Mini SASS
- Fish Tagging
- Bird Ringing
- Educational Bush Walks – Ecology & Botany
- Tracks, Signs and Spoor
- Community Development
- Camera Trapping and Data Processing



## Activities and Adventure– Zingela

- Abseiling
- Rock Climbing
- Swimming
- Kayaking / White water rafting

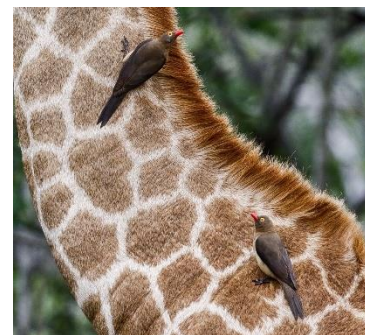


## Research Projects

**Giraffe Research Project** - In the past five years, considerable progress has been made in compiling and producing a species-wide assessment of population size and distribution. The continued growth of these populations however is limited by the ability of that ecosystem to support a particular number of Giraffes due to space, water and forage availability (i.e. limited carrying capacity).

Over population of Giraffe can have deleterious effects on indigenous flora which may in turn adversely affect other animals within the conservation area; it is necessary to calculate a sustainable carrying capacity for a specific area.

Through our ongoing Giraffe Conservation Project, we aim to gather all the data necessary for generating a conservation plan for our Giraffe. This will help in planning for the future expansion of conservation areas or for reducing the population size through game capture.





## Bush Walks and Ecology Trails

One of the unique aspects of the KwaZulu-Natal Conservation project is the ability to utilise the reserves for walking trails and ecology lessons.

Groups will be accompanied by professional guides as they navigate through the reserve observing the smaller aspects of the flora and fauna that the African Bush has to offer.



### Wilderness Trail Experience

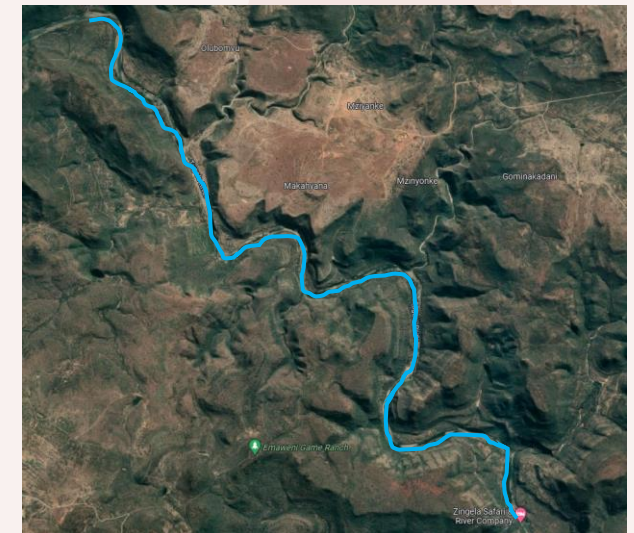
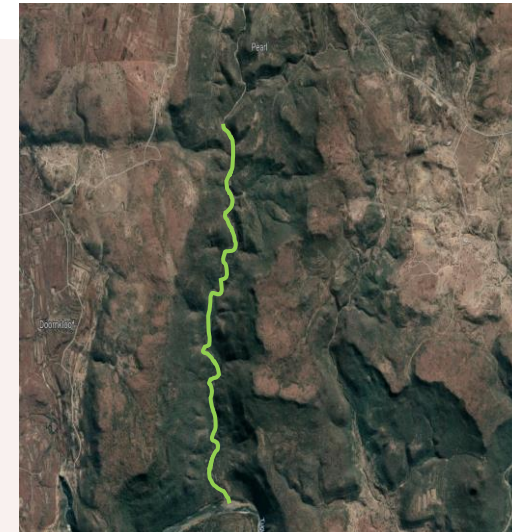
As part of your conservation experience, groups will have the opportunity to take part in a breathtaking wilderness trail between Nambiti and Zingela.

Those choosing the adventurous route\* will embark on a 7km hiking trail from Nambiti to a designated point on the Tugela River.

From there, our river guides will meet the group and assist you to navigate across the stretch of river into Zingela.

A true Adventure!!!

\* A road transfer will also be available between reserves for anyone who doesn't wish to participate in the trail.



### Adventure Activities – Zingela

#### White Water Rafting & Kayaking

There is an excellent 20km stretch of rapids and pools in this section of the Tugela Canyon including the intimidating Washing Machine and Finger Rock rapids.

#### Abseiling & Rock Climbing

The cliffs overlooking the Tugela Canyon provide dizzying abseil sites. Face your fear or watch other participants step over the edge. Registered, experienced guides are there to provide reassurance and safety.





**AFRICA**

# **ACCOMMODATION & LIFESTYLE**

Life in the African Bush

## Game Reserve Camps - Nambiti

In keeping with the Safari Adventure theme, groups are accommodated on the reserve in shared comfortable safari tents, with communal hot and cold showers and regular flushing toilets.

All meals are provided in a communal dining area. Students are expected to help clear up after meals.



# ACCOMMODATION

AFRICA

## Game Reserve Camps – Zingela



ANY QUESTIONS?

[INFO@GAPAFRICAPROJECTS.COM](mailto:INFO@GAPAFRICAPROJECTS.COM) | +44 (0)207 1937819

INFORMATION PACK 22



**AFRICA**

# **USEFUL INFORMATION**

Inclusions/Exclusions &  
Recommended Kit List



# WHAT'S INCLUDED

AFRICA

## What is included?

- Flights
- Transfers to/from project
- Accommodation
- Three meals per day
- All activities as part of the project
- ATOL protection
- Airport meet/greet
- 24/7 In country support

## NOT Included

- Personal Travel Insurance \*
- Meals on travel days – before arriving & after departing from the project.
- Any activities not specified as part of the project
- Visa's/travel documents
- Tips

\* We recommend that you take out personal travel insurance as soon as your booking is confirmed.





## Suggested kit list

- Short sleeve shirts
  - Long work trousers and shorts  
(Or work trousers with zip-off longos)
  - T shirts
  - Hiking Boots/comfortable walking shoes to work in every day
  - Rain jacket
  - Sweatshirt/Fleece (Winter months pack plenty)
  - Padded parka jacket/windbreaker –(it can get very cold on an open vehicle – even on a summer evening)
  - Daypack rucksack
  - Microfibre sleeping bag liner – useful for extra warmth in winter
  - Socks
  - Hat for sun protection / Warm Hat (winter only)
  - Working gloves
  - Gloves for warmth (winter only)
  - Changes of casual clothes for evenings
  - Underwear
  - Sandals / comfy shoes to wear after work hours
  - Beach towel
  - Swimming costume
  - Toiletries
  - Tick / insect repellent
  - Personal medical items and First Aid Kit
  - Binoculars
  - Sunscreen & Sunglasses
- Other useful items:**
- Good torch
  - Water bottle
  - Camera
  - Spare batteries
  - Mammal/bird book
  - Notebook/diary and pen
  - Lip balm
- All work clothes should be neutral or earth tones for working in the bush.
  - No skimpy or bright coloured clothing to be worn.



**GLOBAL** reach. **ADVENTURE** for all. **PROJECTS** to inspire.

Explore our network of Global Adventure Projects:



[GLOBALADVENTUREPROJECTS.COM](http://GLOBALADVENTUREPROJECTS.COM)

