



Gap Africa 23-24 Alumni Project Presentation



KwaZulu-Natal Conservation Research



GLOBAL reach. **ADVENTURE** for all. **PROJECTS** to inspire.

ABOUT US:

AFRICA

GAP Africa Projects

- We are a specialised travel company that offers academic trips and volunteering opportunities for groups and individual travellers, in a number of locations worldwide
- We pride ourselves on curating experiences which are personalised to your needs and requirements
- Our first project travelled in 2010
- Full ATOL Bonding
- Working with over 50 Colleges and Universities around the UK
- A small dedicated team in the UK and South Africa.





AFRICA

KWAZULU-NATAL PROJECT OVERVIEW

Overview and location
of the project



ABOUT THE PROJECT

AFRICA

Your Conservation Field Trip Explained

- A unique academic conservation experience based in South Africa
- Live and work in the wild of Africa
- The opportunity to experience hands on wildlife conservation
- Bespoke, tailor made projects to suit research requirements
- Project Activities include:
 - Pioneering conservation research
 - Conservation activities
 - Cultural enrichment
- Full 12 nights in South Africa
- All inclusive experience
- The most incredible wildlife experience you will ever have



AFRICA

ABOUT THE PROJECT

Our conservation work
in more detail

ABOUT THE PROJECT

AFRICA

KwaZulu-Natal Conservation Research

Our academic team and qualified rangers at the KwaZulu-Natal Conservation Research Project offer a bespoke course to each institution dependent on their own personal objectives and learning needs.

We set out the basis of the trip, comprising of a 12-day academic module split between the two conservation reserves.

A full day will be planned but will vary from day to day depending on the day's task and research goals.

The project split and duration are as follows:

13 Day Itinerary

Days 1 – 6

Nambiti Big 5 Conservation Research

Days 6 – 12

Zingela Wilderness Conservation and Adventure Activities

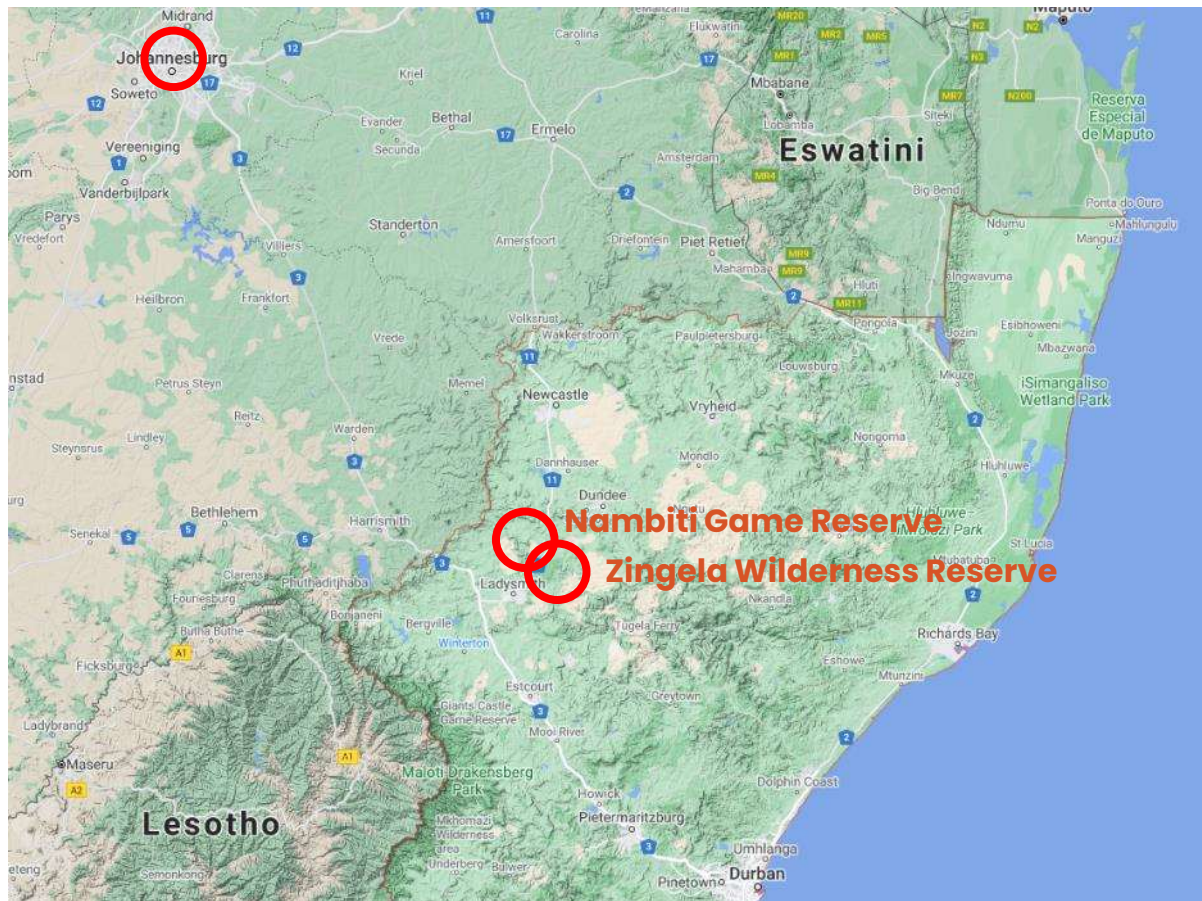


PROJECT OVERVIEW

AFRICA

KwaZulu-Natal Conservation Research Project- Location

- South Africa a world leader in conservation
- Malaria free KwaZulu Natal





AFRICA

6 Days at Nambiti Game Reserve

A Big Five Game Reserve

ABOUT THE PROJECT

AFRICA

Nambiti Game Reserve

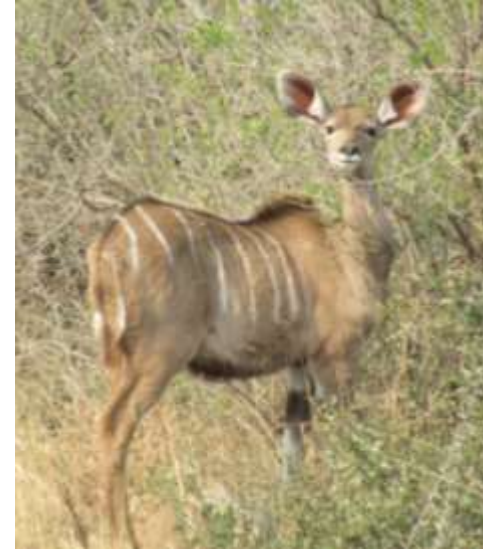
A magnificent 23,000 acres of unspoiled wilderness boasting the Big 5 and incredible biodiversity (grasslands, riverine bush, savannah and thornveld) offering unprecedented diversity of wildlife.



ABOUT THE PROJECT

AFRICA

Home to over 40 Species of Mammal



ANY QUESTIONS?

INFO@GAPAFRICAPROJECTS.COM | +44 (0)207 1937819

Presentation 10

ABOUT THE PROJECT

AFRICA

Many reptile, bird and invertebrate Species



ANY QUESTIONS?

INFO@GAPAFRICAPROJECTS.COM | +44 (0)207 1937819

Presentation 11

YOUR PROJECT

AFRICA

Your Conservation Programme – Nambiti

Students will be taught and work alongside the field guides and conservation team. The following examples depict the day-to-day activities that may be undertaken as part of the project at Nambiti.

- Alien vegetation control / Reserve maintenance
- Use of telemetry tracking
- Elephant monitoring / Population study
- Rhino monitoring & awareness
- Anti-poaching talk and fence walk
- Camera trapping
- Night drive
- Big Five bush walk
- Habitat and prey selection of predators
- Tracks, signs and spoor
- Community development



NAMBITI GAME RESERVE

AFRICA

Nambiti Research Team



ANY QUESTIONS?

INFO@GAPAFRICAPROJECTS.COM | +44 (0)207 1937819

Presentation 13

NAMBITI GAME RESERVE

AFRICA

Use of Telemetry Tracking



ANY QUESTIONS?

INFO@GAPAFRICAPROJECTS.COM | +44 (0)207 1937819

Presentation 14

NAMBITI GAME RESERVE

AFRICA

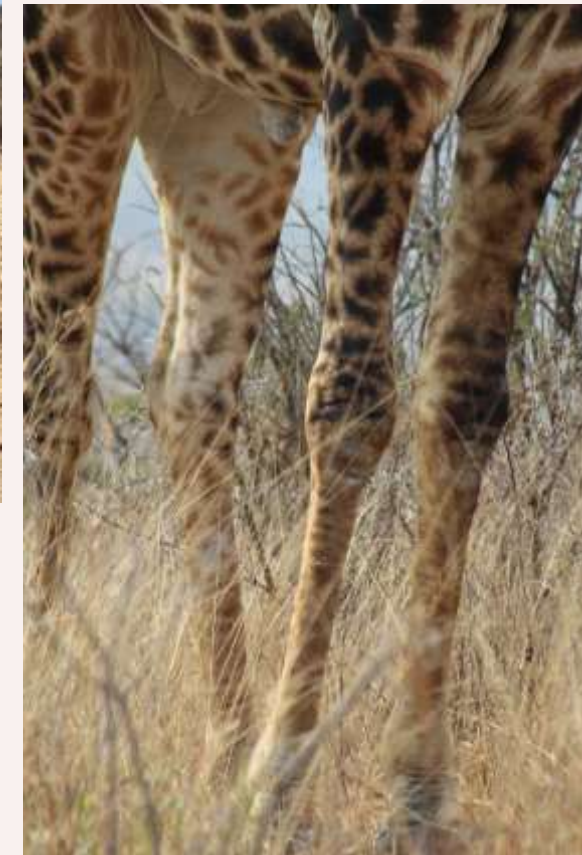
Use of Telemetry Trackingnew animals!



NAMBITI GAME RESERVE

AFRICA

Ecology Trails: Tracks, signs and spoors



ANY QUESTIONS?

INFO@GAPAFRICAPROJECTS.COM | +44 (0)207 1937819

Presentation 16

NAMBITI GAME RESERVE

AFRICA

Big Five Bush Walk



ANY QUESTIONS?

INFO@GAPAFRICAPROJECTS.COM | +44 (0)207 1937819

Presentation 17

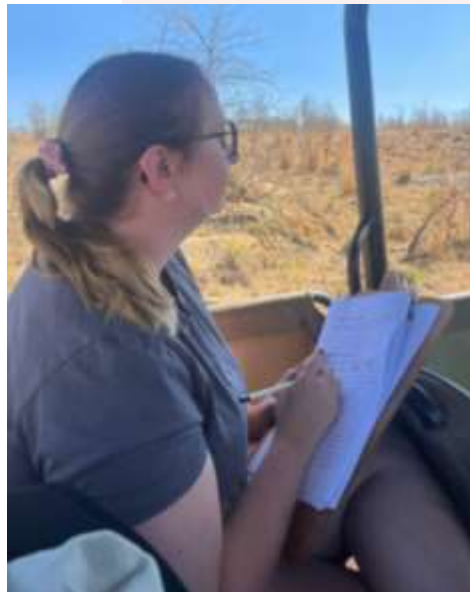
ABOUT THE PROJECT

AFRICA

Research – Habitat and Prey Selection: Predators

Focus on Lion & Cheetah populations:

- GPS coordinates from tracking collars
- Used for movement/ spatial/ home range analysis
- Monitoring cheetah for lion interactions & breeding



Wildlife Monitoring – Elephant Impact Assessment

Research into impact of elephant on the eco system:

- Matriarch collared so GPS range data available
- Herd population data
- Elephant impact assessments
- Long term ongoing project looking at elephant impact on vegetation



Rhino Monitoring – Awareness and Anti-Poaching



NAMBITI GAME RESERVE

AFRICA

Camera Trap – Research

- Set out own camera traps
- Learn about correct placement, best location....
- Never know what you will find!



NAMBITI GAME RESERVE

AFRICA

Night Game Drives



ANY QUESTIONS?

INFO@GAPAFRICAPROJECTS.COM | +44 (0)207 1937819

Presentation 22

Community Projects & Zulu Culture

Learn about traditional Zulu culture

Community engagement essential for long term conservation

Positive impact supporting not for profit initiatives

Projects: Move Africa, Jabong Hats & Rhino Art



ABOUT THE PROJECT

AFRICA

Community – GAP Donation Bags



ANY QUESTIONS?

INFO@GAPAFRICAPROJECTS.COM | +44 (0)207 1937819

Presentation 24



AFRICA

6 Days at Zingela Nature Reserve

River Research and Adventure



Your Conservation Programme – Zingela

Students will be taught and work alongside the field guides and scientific team. The following examples depict the day-to-day activities that may be undertaken as part of the project at Zingela Reserve.

- Spatial distribution and habitat use of species
- Giraffe migration conservation project
- Reptile pit fall traps
- Freshwater ecology & river mini SASS
- Fish tagging
- Educational bush walks – ecology & botany
- Bird watching & ringing
- Tracks, signs and spoor
- Community development
- Camera trapping and data processing



ABOUT THE PROJECT

AFRICA

Zingela River Safari

Zingela Wildlife Reserve covers 12,500 acres of predator free, pristine African bushveld. You will have the opportunity to be involved with the research that takes place at the property. You will also have the chance to participate in a host of activities during your stay.



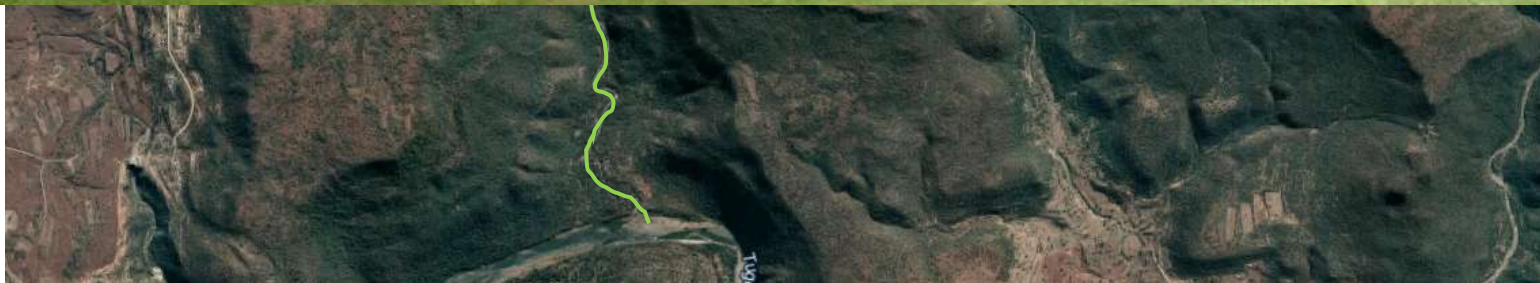
ANY QUESTIONS?

INFO@GAPAFRICAPROJECTS.COM | +44 (0)207 1937819

Presentation 27

NAMBITI TO ZINGELA

AFRICA



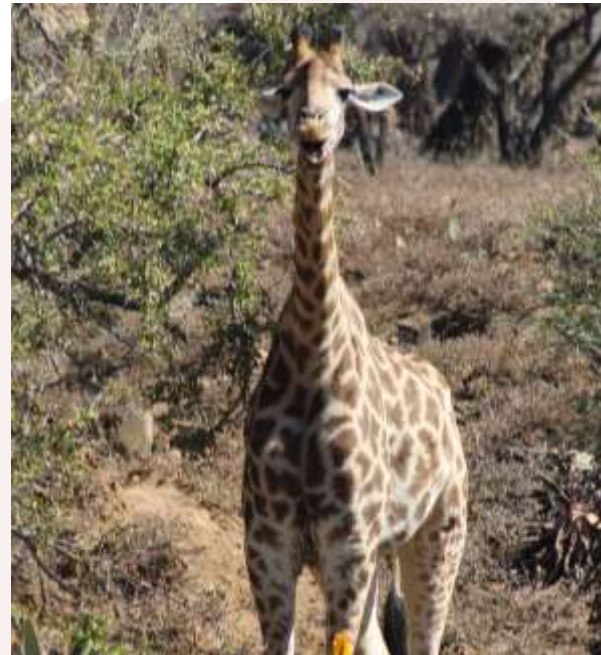
ANY QUESTIONS?

INFO@GAPAFRICAPROJECTS.COM | +44 (0)207 1937819

Presentation 28

Giraffe Migration Research Project

- Population data and database for individuals
- Migration and range data through unfenced territories
- Diet and vegetation impact assessment
- Genetic diversity



River Assessments – SASS

- Fish tagging and release
- River systems and conservation
- SASS – South African Scoring System
- Collecting biometric data
- Fresh water eel project – understanding life cycle using GPS data



Reptile Research and Trapping

- Data collection started in 2022 with annual projects planned
- Species frequency
- Herpetofauna succession during vegetation rehabilitation
- Comparing herpetological diversity



ZINGELA WILDERNESS RESERVE

AFRICA

Educational Bush Walks – Ecology and Botany



ANY QUESTIONS?

INFO@GAPAFRICAPROJECTS.COM | +44 (0)207 1937819

Presentation 32

ZINGELA WILDERNESS RESERVE

AFRICA

Inspiring lectures & species monitoring



ANY QUESTIONS?

INFO@GAPAFRICAPROJECTS.COM | +44 (0)207 1937819

Presentation 33

Nocturnal/diurnal activities – invertebrates hunting



ZINGELA WILDERNESS RESERVE

AFRICA

Community development



ANY QUESTIONS?

INFO@GAPAFRICAPROJECTS.COM | +44 (0)207 1937819

Presentation 35

ZINGELA WILDERNESS RESERVE

AFRICA

River Safari – Rafting and Kayaking



ANY QUESTIONS?

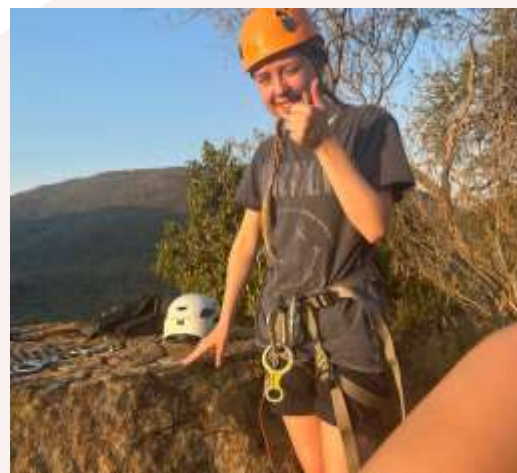
INFO@GAPAFRICAPROJECTS.COM | +44 (0)207 1937819

Presentation 36

ZINGELA WILDERNESS RESERVE

AFRICA

Abseiling and Rock Climbing





AFRICA

ACCOMMODATION & LIFESTYLE

Life in the African Bush



ACCOMMODATION

AFRICA

Game Reserve Camps - Nambiti

In keeping with the safari adventure theme, groups are accommodated on the reserve in comfortable safari tents, with communal hot and cold showers and regular flushing toilets. All meals are provided in a communal dining room.



ACCOMMODATION

AFRICA

Game Reserve Camps - Nambiti



ANY QUESTIONS?

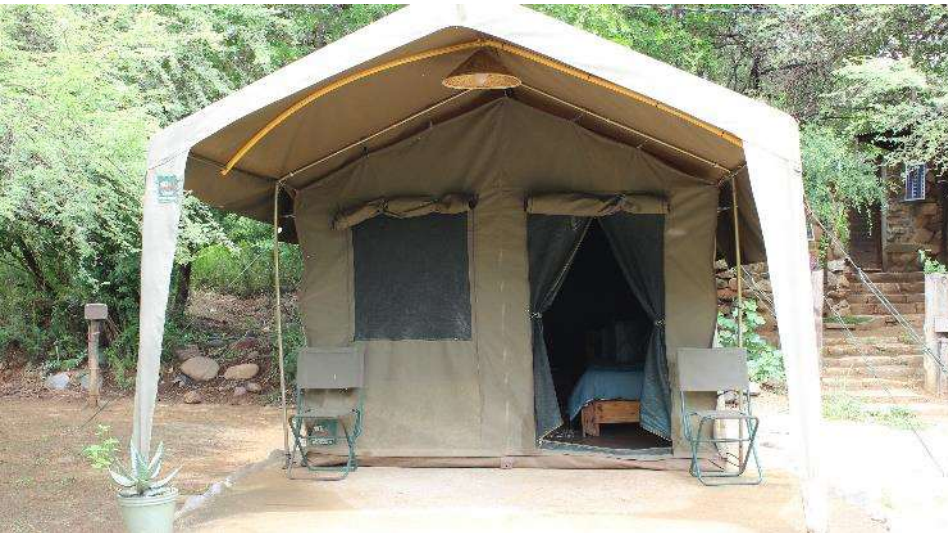
INFO@GAPAFRICAPROJECTS.COM | +44 (0)207 1937819

Presentation 40

ACCOMMODATION

AFRICA

Game Reserve Camps - Zingela



ANY QUESTIONS?

INFO@GAPAFRICAPROJECTS.COM | +44 (0)207 1937819

Presentation 41

ACCOMMODATION

AFRICA

Game Reserve Camps - Zingela



ANY QUESTIONS?

INFO@GAPAFRICAPROJECTS.COM | +44 (0)207 1937819

Presentation 42

Food at the project

Three meals are provided a day prepared by the kitchen staff.

Breakfasts will consist of toast and cereals; lunch may include pasta, wraps, burgers, stir fry; dinners include meat, fish and vegetables with rice, potatoes or pasta.

On weekends a braai (BBQ) is often organised.

Please advise us of any dietary requirements in advance so we can ensure that you are adequately catered for.



ACCOMMODATION

AFRICA

Food at the project



ANY QUESTIONS?

INFO@GAPAFRICAPROJECTS.COM | +44 (0)207 1937819

Presentation 44

ACCOMMODATION & LIFESTYLE

AFRICA

Life on project – Lifelong memories



ANY QUESTIONS?

INFO@GAPAFRICAPROJECTS.COM | +44 (0)207 1937819

Presentation 45

ACCOMMODATION & LIFESTYLE

AFRICA

Life on project – Life long memories



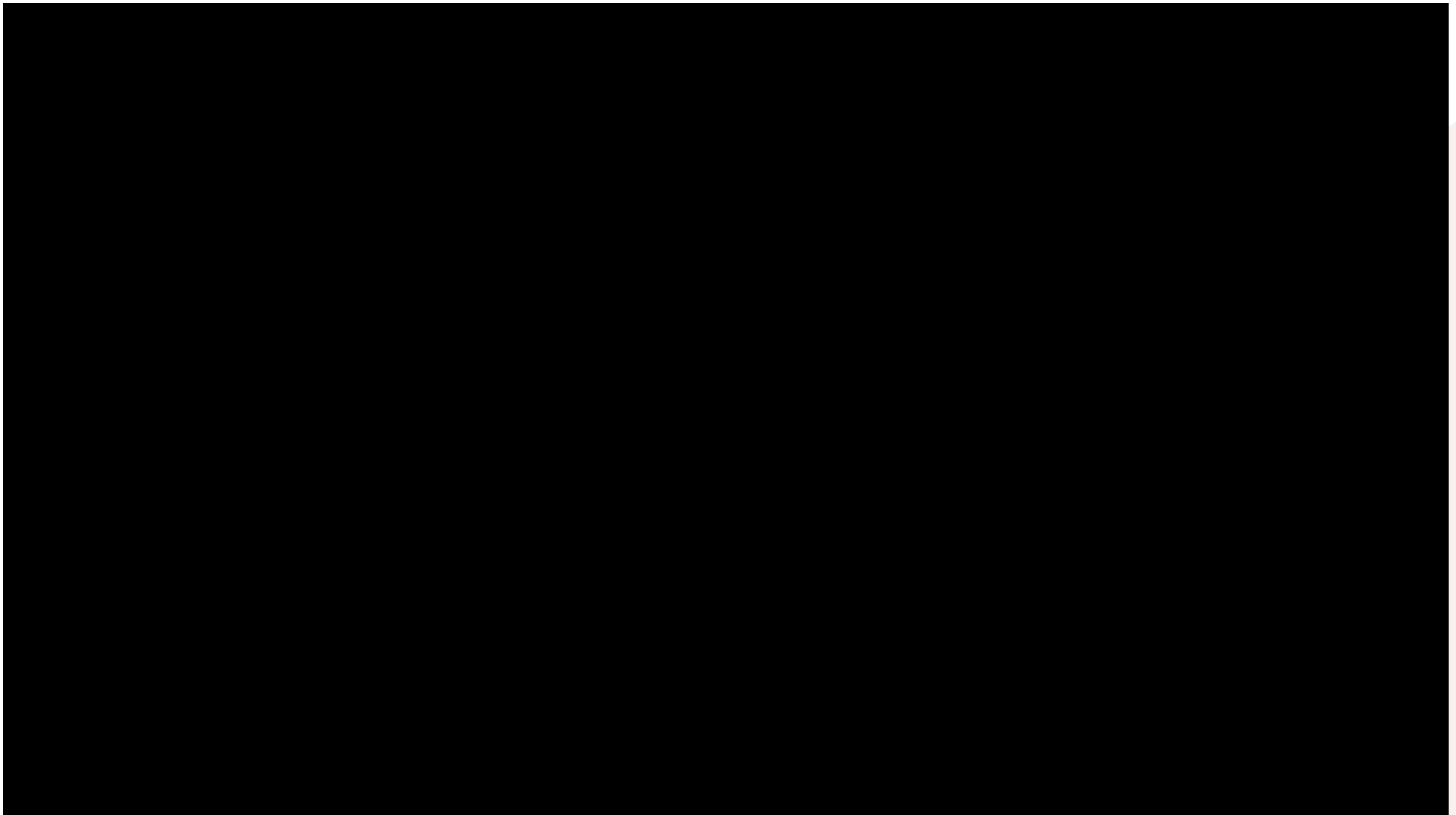
ANY QUESTIONS?

INFO@GAPAFRICAPROJECTS.COM | +44 (0)207 1937819

Presentation 46

ABOUT YOUR PROJECT

AFRICA



ANY QUESTIONS?

INFO@GAPAFRICAPROJECTS.COM | +44 (0)207 1937819

Presentation 47

WHY SHOULD I TRAVEL?

AFRICA

What do previous travellers say about the KwaZulu-Natal Conservation Research?



"It was the most **amazing** experience I've ever had."



"I learnt so many new things that have **educated** me **beyond** classroom curriculum"



"There wasn't a single experience that didn't **amaze** me and make me feel **enriched**."

Reference: GAP Africa Projects Post Project Trip Questionnaire 23/24

WHY SHOULD I TRAVEL?

AFRICA

What do previous travellers say about the KwaZulu-Natal Conservation Research?



“Being at Nambiti really developed my knowledge of animal behaviours”



Everything **exceeded** my expectations, and the trip was **life-changing.**”



Our guide was **amazing**, we got the **opportunity** to take part in talks and demonstrations by APU

Reference: GAP Africa Projects Post Project Trip Questionnaire 23/24

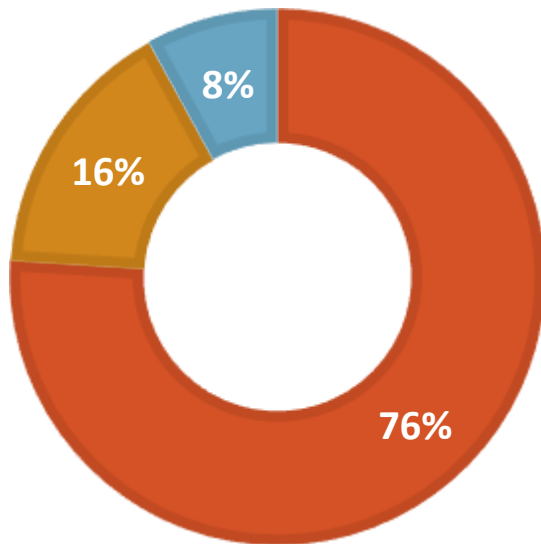
WHY SHOULD I TRAVEL?

AFRICA

Personal Development

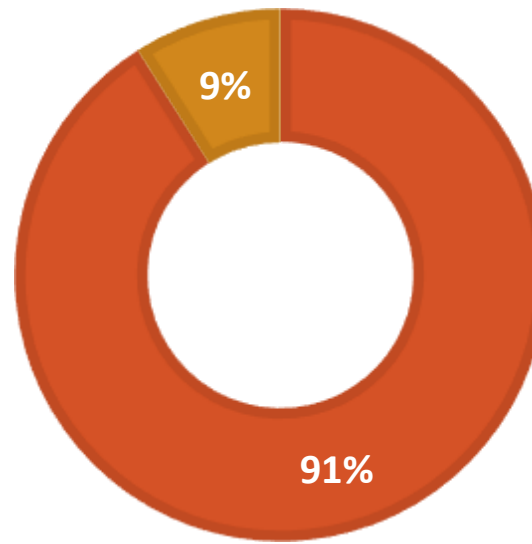
MENTAL HEALTH IMPROVEMENT

■ Yes ■ No ■ NA



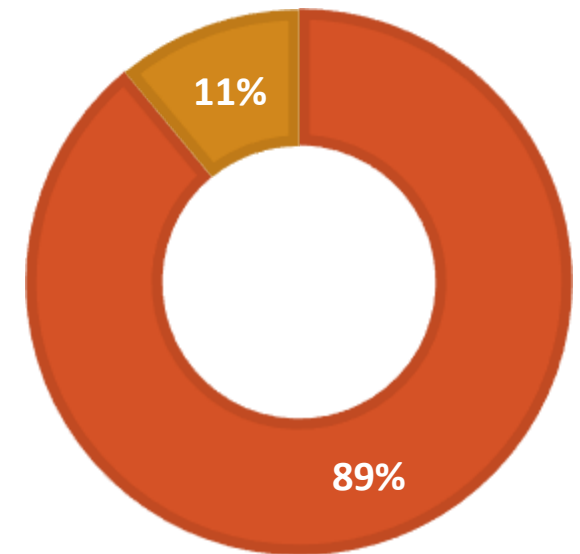
CONFIDENCE IMPROVEMENT

■ Yes ■ No



RESILIENCE IMPROVEMENT

■ Yes ■ No



Reference: GAP Africa Projects Post Project Trip Questionnaire 23/24



AFRICA

THE NEXT STEPS TO YOUR FIELD TRIP

The next steps to the trip of a
lifetime!

THE NEXT STEPS

AFRICA

What is Included?

- Flights from London Heathrow or Manchester
- Transfers to/from project
- Accommodation
- Three meals per day
- All activities as part of the project
- ATOL protection
- Airport meet/greet
- 24/7 In country support

NOT Included

- Personal Travel Insurance *
- Meals on travel days – before arriving & after departing from the project
- Any activities not specified as part of the project
- Visa's/travel documents

* We recommend that you take out personal travel insurance as soon as your booking is confirmed.

THE NEXT STEPS

AFRICA



Project dates & key deadlines

Confirmed trip dates:

Depart UK: 13th July 2025 Arrive SA: 14th July 2025

Depart SA: 26th July 2025 | Arrive UK: 27th July 2025

Trip cost:

£2295* Based on a group of 18 (confirmed once flights have been held)

Key deadlines are:

- Return online booking form by 18th October
- Deposit payment £300.00 by 30th October
- 50% instalment payment of £997.50 to be paid by 24/03/2025
- Balance payment of £997.50 to be paid by 19/05/2025
- Payment plans available
- 30/06/2025 e-Tickets & final documents will be issued

THE NEXT STEPS

AFRICA

Confirmation Documents

Confirmation documents will be issued and sent directly to you via email.

Please communicate with us with any questions relating to the field trip.

Your Booking

Travel Advice

Names and surnames

Passport expiry date

Passport Copies

Travel Insurance

Passengers Travelling

Passenger(s)

Sub Land Conservation Research (SALC) (SALC/21 - SALC/22)

Inclusions

Exclusions

Visit Flight(s)

FLIGHT	CLASS	FARE	STATUS
BA1139	Y	33.00	Booked
BA1139	Y	33.00	Booked
BA1139	Y	33.00	Booked
BA1139	Y	33.00	Booked
BA1139	Y	33.00	Booked

CONFIRMATION INVOICE

Flight(s)

Flight No.	Class	From	To	Start Date	End Date	Passenger Name	Passenger Status	Fare
BA1139	Y	LONDON	JOHANNESBURG	2024-08-15	2024-08-15	CHLOE	Y	33.00
BA1139	Y	JOHANNESBURG	LONDON	2024-08-16	2024-08-16	CHLOE	Y	33.00

Total Land Conservation Research

Item	Description	Quantity	Unit Price	Total Price
1	Sub Land Conservation Research	1	3665.00	3665.00

ATOL Certificate

Who is protected?

Name	Number of passengers
CHLOE	1

Your protection

1 complete their trip and return to the UK; or
2 receive a refund.

BOOKING YOUR ADVENTURE

AFRICA

Group Web Page



BOOKING FORM

Your Global Adventure Starts here!

Please use the form below to submit your provisional booking to your selected project. You have the option to pay your initial deposit with the submission of your booking form, or we will contact you for payment once your project placement has been secured.

If you'd like to contact us to ask any initial questions or find out more about what project you'd like to go on and when you can get also get in touch using our short enquiry form, or by calling +44 (0)207 193 7819.

NOTE: Your name should be given as displayed on your passport

Title *

Name *

Date of birth *

Address *

Sustainability & Social, Economic Responsibility

Local employment from rural communities – our project partners employ a high percentage of staff from local communities. They advocate training to advance careers in hospitality, wildlife and conservation.

Low environmental impact camps – our project bush camps are built with minimal impact on the environment. Resources from the surrounding area are utilised for buildings, water is (where possible) pumped from local river sources and green energy supplies, such as solar are championed.

Community donations and support – we encourage all our international study groups to be proactive in donation collections and arrange for excess baggage for said donations to be taken out to South Africa in support of the local communities.

Move Africa, supporting young females – 3 in 10 girls in South Africa miss a week of school every month because they cannot afford basic sanitary products. Our project partners work with Move Africa alongside their partner NGOs, to distribute menstrual cups to the local communities and provide education workshops.

Rhino Art – Project rhino realises the enormous responsibility the youth have to ensure our wildlife is protected for many generations to come. They ensure they can reach and educate as many kids as possible through Rhino Art, using art workshops to teach about conservation. This initiative is supported by our local project partners.

Food/crop education – our project partners encourage food and crop education to rural communities, where cost of living to low income families and distance travelled to obtain basic resources can prove problematic. Projects include community allotments and providing education on best practice for crop rotations, harvest seasons and nutrition.

Recycling workshops – Litter, and in particular plastics, is a major issue and threat to the ecosystem in Southern Africa. Rural communities have limited waste removal available and it is therefore a problem escalating at an alarming rate. Recycling workshops are provided through local schools to help educate children on the importance of correctly disposing of litter and recycling plastics.



GLOBAL reach. **ADVENTURE** for all. **PROJECTS** to inspire.

Explore our network of Global Adventure Projects:



GLOBALADVENTUREPROJECTS.COM

