



# Kendal College – 2025 GROUP PRESENTATION



**GLOBAL** reach. **ADVENTURE** for all. **PROJECTS** to inspire.





ASIA

# ABOUT SRI LANKA

Project overview and  
location



# ABOUT SRI LANKA



## Your Conservation Field Trip Explained

- ❖ A conservation experience based in the Wasgamuwa region of Sri Lanka
- ❖ Work directly with the Sri Lanka Wildlife Conservation Society (SLWCS)
- ❖ The opportunity to experience hands on wildlife conservation
- ❖ Working with conservationists and local communities to protect Ecosystems
  
- ❖ Project activities include:
  - ❖ Wildlife monitoring
  - ❖ Human–Elephant Conflict (HEC)
  - ❖ Carnivore project
  - ❖ Ecosystem conservation
  - ❖ Community education and development
  
- ❖ All-inclusive experience
- ❖ A true travel adventure!





# ABOUT SRI LANKA

ASIA

## Project Location and Travel

- ❖ The project is based in the Wasgamuwa region in the Central Province of Sri Lanka, near to the Wasgamuwa National Park.
- ❖ This area exhibits one of the highest levels of biodiversity in Sri Lanka and is home to 23 species of mammal. The 'endangered' Sri Lankan elephant often takes most of the limelight, with 150 strong herds roaming freely.
- ❖ The National Park is approximately 150 kms from the capital, Colombo.
- ❖ The first night in Sri Lanka will be spent in Colombo then you will move to the project where you will spend most of your time researching and studying in this environment with the opportunity to focus on the communities and villages located around the National Park.

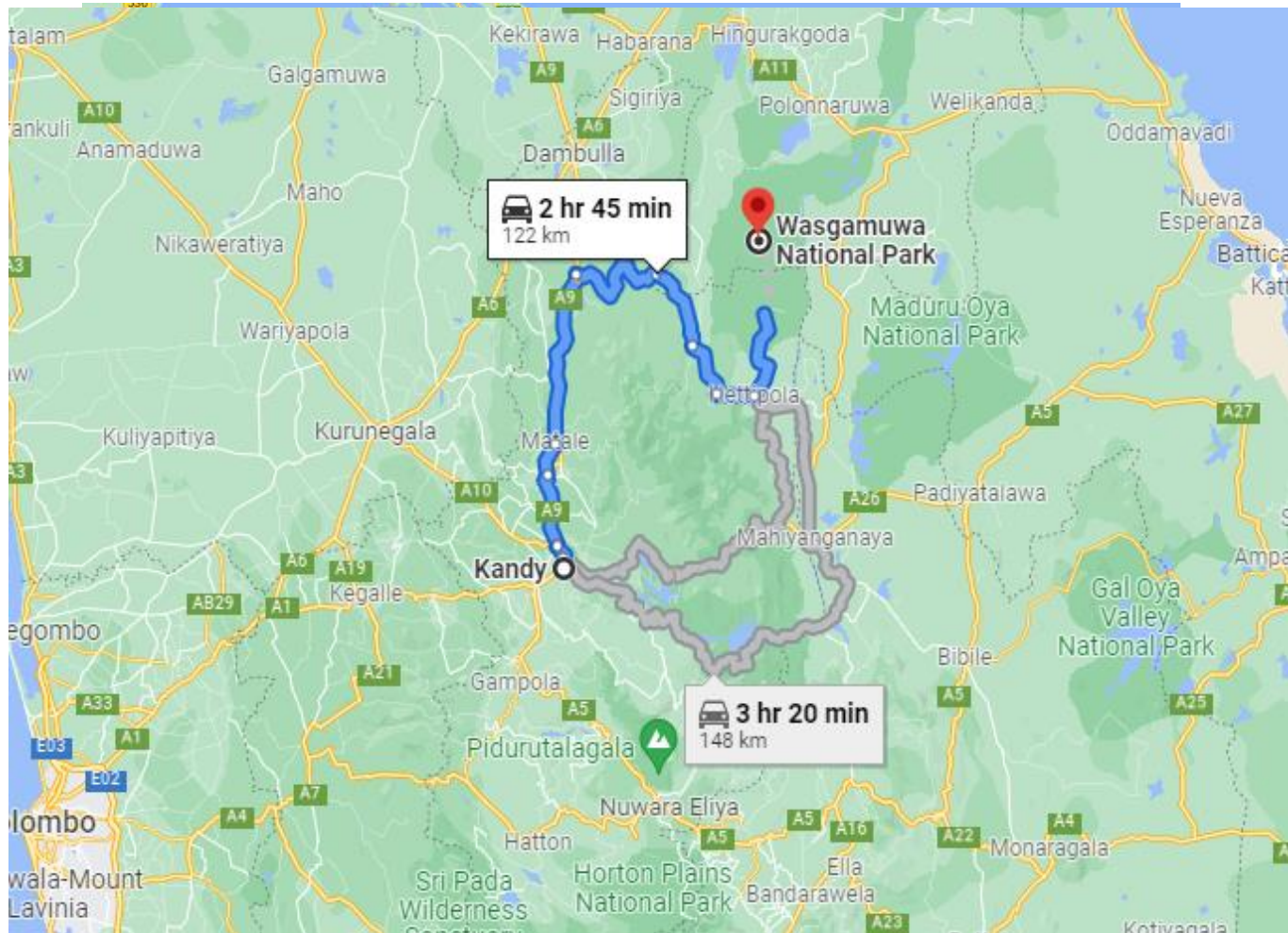


# ABOUT SRI LANKA

ASIA



## Project Location and Travel





# ABOUT SRI LANKA

ASIA

## About SLWCS

- ❖ Working with local communities to manage 'HEC' and ultimately keeping elephants and humans safe
- ❖ Committed to save threatened ecosystems, endangered wildlife and their habitats
- ❖ Combine environmental protection and sustainable development ensuring the community becomes self-sustaining
- ❖ Conserving and researching an entire threatened ecosystem, along with its endangered wildlife and their habitats



# ABOUT SRI LANKA

ASIA

## Other wildlife – 50 new spp. discovered in 2019

### Mammals:

- Buffalo
- Purple faced langur monkeys
- Sambar and spotted deer
- Sri Lankan leopard
- Sloth bear
- Wild boar

### Birds:

- Asian emerald cuckoo
- Chestnut-headed bee-eater
- Crested serpent eagle
- Indian thick-knee
- Sri Lanka drongo
- Sri Lanka hanging parrot

### Reptiles:

- Asian rock python
- Indian star tortoise
- Mugger crocodile and estuarine crocodile
- Rhino-horned lizard
- Sri Lankan green pit viper
- Water monitor

### Invertebrates:

- 32 new spp.! – 26 spiders
- 248 spp. butterfly inc. 31 endemic – currently 52 in the area!
- Ceylon rose
- Sri Lanka ornate ground tarantula







ASIA

# ABOUT THE PROJECT

Our conservation work  
in more detail





# ABOUT THE PROJECT

ASIA



## Introduction to SLWCS

**Sri Lanka**  
Wildlife Conservation Society



Forming partnerships to preserve Sri Lanka's biodiversity.

# ABOUT THE PROJECT

ASIA



## Elephant Monitoring: Health, Behaviour & ID

- ❖ Take photos and data to identify elephants by recording their physical features and other markings on their bodies
- ❖ Collect elephant behavioural data to develop an elephant ethogram
- ❖ Observe other wildlife to maintain check lists of species





# ABOUT THE PROJECT

ASIA



## Human–elephant interactions and conflicts

### Project Orange Elephant

- ❖ Observe HEC and interactions in an ancient elephant corridor (12 villages)
- ❖ Record non-aggressive and aggressive interactions and possible reasons
- ❖ Understand the underlying and overlying issues that lead to HEC





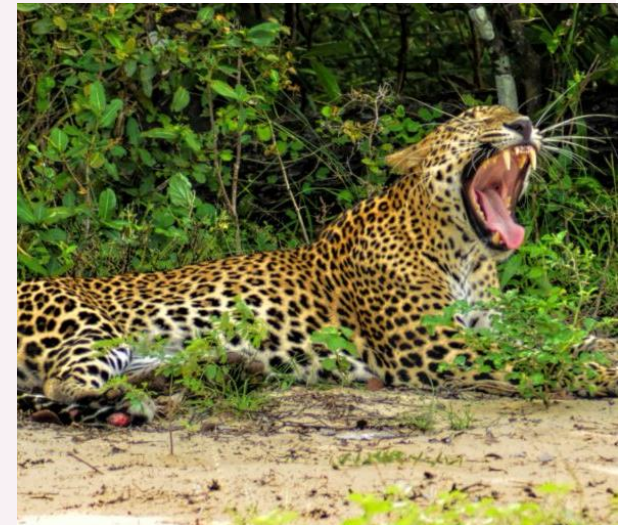
# ABOUT THE PROJECT

ASIA



## Leopard and Predator Monitoring

- ❖ Track and monitor specific leopard
- ❖ Monitor other predators to determine population numbers and density
- ❖ Study the presence/absences of carnivores and their relative abundance in the project area
- ❖ Learn how to identify individual leopards based on the coat patterns





# ABOUT THE PROJECT

ASIA



## Set up camera stations and maintain existing ones

- ❖ Use of night vision scopes and infrared cameras for research
- ❖ Observation of small wild cats and other elusive species
- ❖ Learn how remote cameras help to identify animals
- ❖ Collect and collate data from traps





# ABOUT THE PROJECT

ASIA

## Conduct pug mark surveys & dung transects

- ❖ Observe and document footprints of wild animals
- ❖ Trail mapping of various species found in the national park
- ❖ Study the diversity and presence of small animals
- ❖ Learn how pug marks help to assess the biodiversity of a certain place or area
- ❖ Set up new sand traps





# ABOUT THE PROJECT

ASIA

## Electric Fence Monitoring and Maintenance

- ❖ Understand the importance of community participation for conservation success
- ❖ Walk along solar powered electric fences erected to stop elephants from raiding crops and village homes to check them for faults and breaks
- ❖ Identify where elephants have tried to damage the fence
- ❖ Help repair any damaged fences





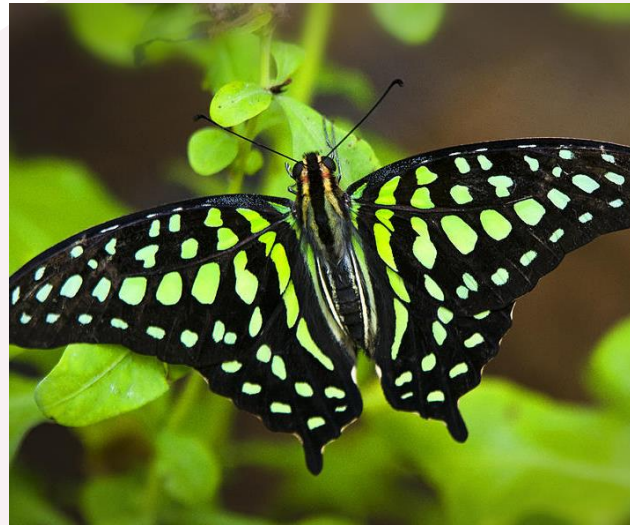
# ABOUT THE PROJECT

ASIA



## SLWCS Butterfly Project

- ❖ Work at the Butterfly Sanctuary at the Butterfly Conservation Project
- ❖ 21 CR & 38 E- 248 spp.
- ❖ Maintain habitats for the butterfly conservation project
- ❖ Identify butterflies and help to create micro-habitats for specific species
- ❖ Understand the diversity and ecological role of butterflies





# ABOUT THE PROJECT

ASIA

## Community development and education

- ❖ Assess the intensity and frequency of elephant raids and attacks on village homes and fields
- ❖ Interview villagers to gather data about: damages to property and crops, plus injuries to people and elephants
- ❖ Visit houses and farmlands damaged by elephants to assess the damage
- ❖ Identify major concerns of conflict between human and elephants to mitigate HEC
- ❖ Help repair the damage caused to homes by elephants





## Sample Itinerary - TBC

- ❖ **Day 1 & 2 : Depart from UK, arrive in Bandaranaike** – Overnight flight from United Kingdom to Bandaranaike International Airport, Colombo. You will be met at arrivals and taken to your hotel for the first night, afternoon and evening at leisure we can recommend activities
- ❖ **Day 3 : Transfer to the Project, Elephant Sightings** – A guide will take you to Fort railway station for the Colombo–Kandy intercity express taking approximately 3 hours, enjoy the sights of Kandy before transferring by coach to the project. Afternoon spent monitoring elephants, photographing for identification.
- ❖ **Day 4 : Elephant Foraging Transects & Monitoring** – Birding & observation around camp before breakfast. Elephant foraging transects and mapping trails, after lunch elephant monitoring and after dinner a chance to road cruise to spot reptiles.
- ❖ **Day 5 : Fence Patrol and Safari** – Early rock and lakeside hike at sunrise. After breakfast fence line checks and patrol. Afternoon safari in Wasgamuwa National Park.
- ❖ **Day 6 : Birding and Human–Elephant Conflicts** – Birding & observation around camp. After breakfast conduct HEC surveys in villages. After lunch, tree hut observation of HEC in ancient elephant corridor.
- ❖ **Day 7 : Butterfly Sanctuary, Elephant Monitoring, Wild Cat Study** – Morning at the butterfly sanctuary; weeding, planting, plant maintenance and identifying butterflies. Elephant ID and photographing in the afternoon. Small wild cat study after dinner.
- ❖ **Day 8 / 9 : Weekend at Leisure** – You can relax and unwind at the project, or we can suggest additional activities you may wish to do (see slide 22)
- ❖ **Day 10 : Sand Traps, Camera Traps, Elephant Monitoring** – Birding and observation at camp, after breakfast check sand and camera traps, collect data cards, after lunch elephant monitoring with photos. Evening road cruise to spot reptiles after dinner.



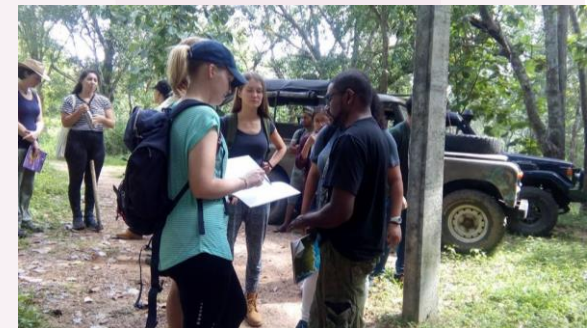
# YOUR PROJECT

ASIA



## Sample Itinerary

- ❖ **Day 11 : Elephant Foraging Transects and HEC** – Birding and observation at camp, after breakfast elephant foraging transects & mapping trails. Spotting of leopard and sloth bear signs. After lunch tree hut observation of HEC in ancient elephant corridor. After dinner night safari to observe nocturnal wildlife.
- ❖ **Day 12 : Pug Mark Survey & Elephant Monitoring** – Sunrise rock and lakeside hike, after breakfast pug mark survey along stream banks, after lunch elephant monitoring with photos and data.
- ❖ **Day 13 : Birding and Human-Elephant Conflicts** – Birding and observation around camp followed by breakfast, then conduct HEC surveys in villages after lunch tree hut observation of HEC in ancient elephant corridor.
- ❖ **Day 14 : Holistic HEC Methods, Elephant Monitoring, Wild Cat Study** – Birding and observation around camp followed by breakfast then observation of citrus groves around villages which act as an elephant deterrent. After lunch elephant monitoring with photos and data. After dinner, an opportunity for a small wild cat study
- ❖ **Day 15 : Return Journey** – Depart from the project after breakfast to Bandaranaike International Airport for your flight home to the UK.
- ❖ Each day there is leisure time after lunch and before the afternoon activities. Activities of birding & observation at camp, small wild cat study, reptile spotting, sunrise hike and night safari are included but are optional participation.







ASIA

## USEFUL INFORMATION

Details on accommodation,  
what's included, kit list





# ACCOMMODATION & LIFESTYLE

ASIA



## Accommodation

- ❖ Your first night in Colombo will be in a minimum 3 star hotel.
- ❖ Accommodation at the project is a field house with dormitory style gender-based rooms and bathroom facilities
- ❖ Three meals per day are provided, plus snack with evening tea; you can access the kitchen outside of meal prep times and coffee and tea is always available. Please advise us of any dietary requirements so we can ensure you are adequately catered for.





# ACCOMMODATION & LIFESTYLE

ASIA

## Additional Weekend Activities

- ❖ The Golden Temple, Dambulla and the large fruit and vegetable market (Travel time: 1.5-2 hours)
- ❖ Sigiriya is home to the UNESCO World Heritage site of Lion's Rock and the lesser known Pidurangula Rock (Travel time: 2-2.5 hours)
- ❖ Polonnaruwa, another UNESCO World Heritage Site is an ancient city dating to the 11<sup>th</sup> century. You can hire bikes or stroll around the ruins and see the toque-macaques monkeys that are only found in Sri Lanka (Travel time: 2-2.5 hours)
- ❖ Kandy is the closest city with nice cafes and restaurants; you can visit the Temple of the Sacred Tooth Relic (Travel time: 3.5-4 hours)
- ❖ Trincomalee, a beautiful town on the east coast of Sri Lanka has bars, restaurants and souvenir shops with access to Pigeon Island, by boat, to see the coral reef (Travel time: 4 hours)







ASIA

# BOOKING YOUR ADVENTURE

The next steps to the trip of a  
lifetime!





# BOOKING YOUR ADVENTURE

ASIA



## Proposed dates & key deadlines

**2025 Proposed trip dates are: 23/06/25–08/07/25**

**Trip cost: £2,695** *\*Based on a group of 18 (confirmed once flights have been held)*

## Key deadlines are:

- ❖ Return of booking forms or online application by: 01/10/24
- ❖ Deposit of £300 to confirm placement within two weeks of provisional booking to confirm place
- ❖ Instalment payment of 50% due 16 weeks before departure: 03/03/25
- ❖ Balance payment due 8 weeks before departure: 28/04/25
- ❖ E tickets will be issued 2 weeks prior to departure and emailed to students: 09/06/25



# BOOKING YOUR ADVENTURE

ASIA



## What is included?

- ❖ Flights
- ❖ Transfer to/from project
- ❖ Accommodation
- ❖ Three meals per day (except on travel days)
- ❖ All activities as part of the project
- ❖ ATOL protection
- ❖ Airport meet/greet
- ❖ 24/7 In country support

## NOT Included

- ❖ Personal Travel Insurance \*
- ❖ Meals on travel days
- ❖ Any activities and additional weekend activities not specified as part of the project
- ❖ Visa's/travel documents

*\* We recommend that you take out personal travel insurance as soon as your booking is confirmed.*




# NEXT STEPS

## Confirmation Documents

Confirmation documents will be issued and sent directly to you via email.

Please communicate with us with any questions relating to the field trip.





10 Oct 2022  
Ref: 23-KCA-CACT-01-LT

**Your Booking**  
Travel Advice

**Names and spellings**  
It is crucial that they match as printed on your passport. If there is a mistake this will need to be changed otherwise you may be refused travel and charged for amendments.

**Passport expiry date**  
Your passport must be valid for at least 30 days beyond the planned departure date of your country of origin. If you hold a passport other than a British citizen passport, you should seek more specific travel advice from your embassy.

**Passport Copies**  
It is recommended that you take photocopies of your passport, documents and keep them in a separate place.

**Travel insurance**  
It is essential that you take out the appropriate travel insurance for your trip. Please remember to take the certificate and policy wording booked with you when you travel. If you have your preferred travel insurer please visit:  
<https://www.gapafriaprojects.co.uk/insurance/>

**Passengers Travelling**  
Miss Chloe Capstick  
Placement(s)  
Zulu Land Conservation Research (06/03/23 - 18/03/23)

**Inclusions**  
Flights, Shared road transfers to and from Project, accommodation for duration, all meals and all project activities.

**Exclusions**  
Insurance, any activities undertaken that are not included as part of the project.

**Your Flight(s)**

05/03/2023	D: 15:00	Manchester (MAN)
05/03/2023	A: 16:05	London Heathrow (LHR)
05/03/2023	D: 18:20	London Heathrow (LHR)
BAS5	A: 07:25 + 1 D	Johannesburg (JNB)
18/03/2023	D: 20:15	Johannesburg (JNB)
BAS6	A: 05:30 + 1 D	London Heathrow (LHR)
19/03/2023	D: 09:35	London Heathrow (LHR)
BA1390	A: 10:40	Manchester (MAN)

**Gap Africa Projects**  
PO Box 138  
Chessington  
Surrey  
KT9 9BT  
United Kingdom  
Tel: +44 (0) 20 7193 7819  
Email: info@gapafriaprojects.com

LA19 5UH  
UK  
Date: 30/10/2022  
Invoice No: 23-KCA-CACT-02-04  
Booking Ref: 4413

**Projects, Placements, Extra Activities**

Description	Qty	Arrival	Departure
Zulu Land Conservation Research	1	06/03/2023	18/03/2023

**Flights**

Flight No.	Date	Dep. Time	Arrival Time	Departure Airport	Arrival Airport
BA1399	05/03/2023	15:00	16:05	Manchester (MAN)	London Heathrow (LHR)
BAS5	05/03/2023	18:20	07:25 + 1 Day	London Heathrow (LHR)	Johannesburg (JNB)
BAS6	18/03/2023	20:15	05:30 + 1 Day	Johannesburg (JNB)	London Heathrow (LHR)
BA1390	19/03/2023	09:35	10:40	London Heathrow (LHR)	Manchester (MAN)

**Miss Chloe Capstick's ATOL Details**  
Miss Chloe Capstick, Gap Africa Projects is licensed under the Air Travel Organiser's Licensing scheme with ATOL License 10890. This trip is financially protected by this ATOL License and we will also supply an ATOL Certificate. Please visit [www.atol.org.uk](http://www.atol.org.uk) for more information about financial protection and the ATOL Certificate.

**Invoice Amounts**

Description	Date	Amount
Total cost of the arrangements as specified above	28/09/2022	£ 2,195.00
• Deposit Payment	09/01/2023	£ 360.00
	<b>Total balance due by</b>	<b>£ 1,895.00</b>
	Of which is due by	£ 947.50

**Payment Methods**  
Cheques: Payable to GAP AFRICA PROJECTS LTD  
Bank Transfer: Account No: 63697976  
Sort Code: 20-46-73  
Swift: BARCGB22  
IBAN: GBAN0378ARC20607363609758

For all bank transfers, please use your surname and booking number 4413 as reference. For transfers outside of the UK, please ensure that international transfer charges are covered when making the transaction.

mark.botell@gapafriaprojects.com  
+44 (0) 207 193 7819  
GAP AFRICA PROJECTS  
PO Box 138,  
Chessington,  
Surrey,  
KT9 9BT,  
UK  
ATOL  
10890

Registered in England No 7212428  
01876 20000  
F01: 18270024  
Registered Office: 238 London Street, Alton,  
Basingstoke, GU24 1NR

This is an important document. Make sure that you take it with you when you travel.

## ATOL Certificate

This confirms that your money is protected by the ATOL scheme and that you can get home if your travel company collapses. This certificate sets out how the ATOL scheme will protect the people named on it for the parts of their trip listed below.

**Who is protected?** Number of passengers: 18  
Birkell-Partridge Eve-Mae Miss | Blakeaway Akshai Miss | Capstick Chloe Miss | Darquhan Ruben Mr | Dean Grace Miss | Denney Jade Miss | Edge Melissa Miss | Franki Megan Miss | Greenhouse Katelyn Miss | Hudson George Mr | Kay Matthew Mr | Dammagan Naomi Miss | East Alexander Mr | Taylor Olivia Miss | Viret Henry Mr | Weaver Holly Miss | Weston Thomas Miss | Wilson Rachel Miss

**What is protected?**  
Package taken to Zulu Land for 13 days  
06/03/2023 18:00 London Heathrow (LHR) to Johannesburg (JNB) 19:00 11:00  
18/03/2023 05:30 Johannesburg (JNB) to London Heathrow (LHR) 10:00 11:15  
18/03/2023 10:40 London Heathrow (LHR) to Manchester (MAN) 11:00 11:15  
19/03/2023 09:35 Manchester (MAN) to London Heathrow (LHR) 10:40 11:15

You can find more detailed information on your booking, including price, on the confirmation you will receive from Gap Africa Projects Limited

**Who is protecting your trip?**  
Gap Africa Projects Limited ATOL Number 10890

**Your protection**  
You are protected from when you were given this certificate to the end of your trip. If Gap Africa Projects Limited stops trading, the passengers named above will either:  
1 complete their trip and return to the UK or  
2 receive a refund.  
Your protection depends on the terms of the ATOL scheme (available at [www.atol.org.uk](http://www.atol.org.uk)).

If Gap Africa Projects Limited stops trading, you must follow the instructions at [www.atol.org.uk](http://www.atol.org.uk) (where there will be details of arrangements to bring people back to the UK, and information on how people can claim their money back) or you can call +44 20 7463 6300.

By issuing this ATOL Certificate, under Regulation 17 of the Civil Aviation (Air Travel Organisers' Licensing) Regulations 2015, Gap Africa Projects Ltd confirms that the trip to which it applies is sold in line with the ATOL held by the organiser named above. The ATOL scheme is run by the Civil Aviation Authority and paid for by the Air Travel Trust. To see what that is and what you can expect, together with full information on its terms and conditions go to [www.atol.org.uk](http://www.atol.org.uk). As well as the protection of the ATOL scheme, you have protection under the Package Travel Regulations. For more information see [www.direct.gov.uk](http://www.direct.gov.uk) in the Travel and Transport section.

Unique reference number:	Date of issue:	ATOL Certificate issuer:	ATOL number:	Package sale
4413	10/10/2022	Gap Africa Projects Ltd	10890	

Copyright UK Civil Aviation Authority. The ATOL Logo is a registered trade mark.  
Click here to [look at all available fields](http://www.atol.org.uk)

ANY QUESTIONS?

INFO@GAPAFRICAPROJECTS.COM | +44 (0)207 1937819



# BOOKING YOUR ADVENTURE

ASIA



## Group Web Page

<https://gapafricaprojects.com/25-4640/>



## Booking Form

<https://gapafricaprojects.com/booking-form-25-kca-sw-4640-sri-lanka/>



**BOOKING FORM**

Your Global Adventure Starts here!

Please use the form below to submit your provisional booking to your selected project. You have the option to pay your initial deposit with the submission of your booking form, or we will contact you for payment once your project placement has been secured.

If you'd like to contact us to ask any initial questions or find out more about what project you'd like to go on and when, you can get also get in touch using our short enquiry form, or by calling +44 (0) 207 193 7819.

(NB: Your name should be given as displayed on your passport)

Title \*

Name \*

Date of birth \*

Address \*





## Sustainability & Social, Economic Responsibility

- **Local employment from rural communities** – our project partners employ a high percentage of staff from local communities. They advocate training to advance careers in hospitality, wildlife and conservation.
- **Low environmental impact camps** – our project accommodation/s is built with minimal impact on the environment. Resources from the surrounding area are utilised for buildings, water is (where possible) pumped from local river sources and green energy supplies, such as solar are championed.
- **Community donations and support** – we encourage all our international study groups to be proactive in donation collections and arrange for excess baggage for said donations to be taken out to Sri Lanka in support of the local communities.





**GLOBAL** reach. **ADVENTURE** for all. **PROJECTS** to inspire.

Explore our network of Global Adventure Projects:



[GLOBALADVENTUREPROJECTS.COM](http://GLOBALADVENTUREPROJECTS.COM)

