



# ARU Writtle Group Presentation



## Waterberg Wildlife & Veterinary Course



**GLOBAL** reach. **ADVENTURE** for all. **PROJECTS** to inspire.



AFRICA

# ABOUT THE WATERBERG

Project overview and  
location

# ABOUT THE WATERBERG

AFRICA

## Your Conservation Field Trip Explained

- **A unique conservation experience based in South Africa**
- **Live in a research camp on a wild African game reserve**
- **12 day programme specifically tailored for VN students**
- **Learn about conservation management**
- **Project Activities include:**
  - Pioneering Conservation Research
  - Conservation Activities
  - Veterinary interventions and activities
- **Dedicated vehicles and conservation staff**
- **All inclusive experience**
- **The most incredible wildlife experience you will ever have**

# ABOUT THE PROJECT

AFRICA

## What is a Game Reserve?

- A game reserve is a large area of protected land where wild animals can live safely.
- Wildlife is free roaming throughout the reserve allowing them to thrive in their natural habitat.
- Reserves are either Government Owned (National Parks) or Privately Owned/Managed.
- Most reserves will have physical boundaries i.e. electrified fence line.
- Due to physical boundaries, wildlife must be managed due to restraints on population growth, migration and resources.
- Wildlife is protected but also utilised as a tourist attraction (Eco Tourism) which creates funding for conservation efforts and research.



# ABOUT THE WATERBERG

AFRICA

## Entabeni Safari Conservancy

- 22 000 Hectare Privately Managed Game Reserve
- Forming part of the Waterberg Biosphere (662 059 ha)
- Work alongside the conservation team including:
  - Wildlife Vets
  - Conservation Researchers
  - Ecologists
  - Anti Poaching Unit
- Located in a Malaria free zone
- Proclaimed Protected Conservation Area
- Savannah Eco System
- Student Camp Accommodation



# ABOUT ENTABENI

AFRICA

## Entabeni Safari Conservancy – Location

- South Africa a world leader in conservation
- Malaria free Waterberg Plateau



# ABOUT ENTABENI

AFRICA

## Entabeni Safari Conservancy – Location

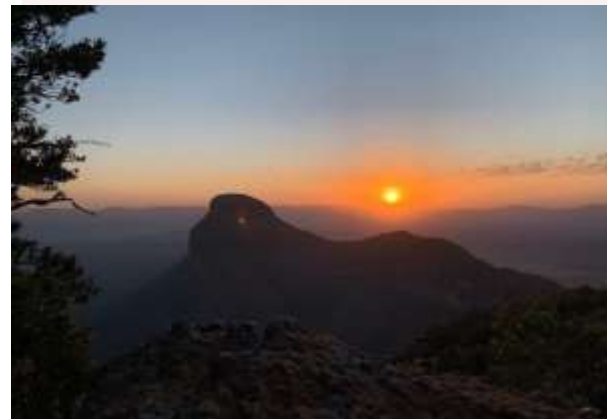
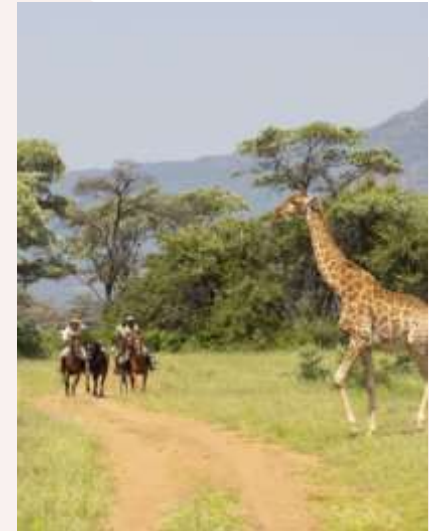
- South Africa a world leader in conservation
- Malaria free Waterberg Plateau



# ABOUT THE WATERBERG

AFRICA

Known for its dramatic landscape



ANY QUESTIONS?

[INFO@GAPAFRICAPROJECTS.COM](mailto:INFO@GAPAFRICAPROJECTS.COM) | +44 (0)207 1937819

Project Presentation 8



# ABOUT THE WATERBERG

AFRICA

## Home to the BIG 5



ANY QUESTIONS?

[INFO@GAPAFRICAPROJECTS.COM](mailto:INFO@GAPAFRICAPROJECTS.COM) | +44 (0)207 1937819

Project Presentation 9

# ABOUT THE WATERBERG

AFRICA

Home to over 60 Species of Mammal



ANY QUESTIONS?

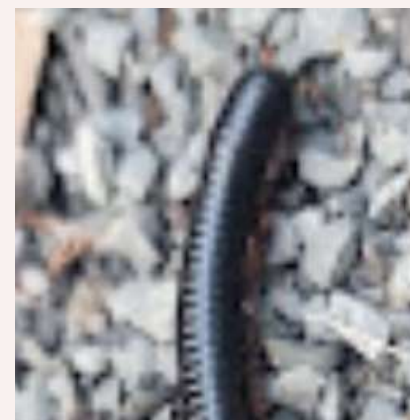
[INFO@GAPAFRICAPROJECTS.COM](mailto:INFO@GAPAFRICAPROJECTS.COM) | +44 (0)207 1937819

Project Presentation 10

# ABOUT THE PROJECT

AFRICA

## Many Reptile, Insect and Bird Species



ANY QUESTIONS?

[INFO@GAPAFRICAPROJECTS.COM](mailto:INFO@GAPAFRICAPROJECTS.COM) | +44 (0)207 1937819

Project Presentation 11



**AFRICA**

## **ABOUT THE PROJECT**

Our conservation work  
in more detail

## Course Fundamentals and Structure

- **Gain understanding of wildlife research and management that govern veterinary practices on reserve**
- **A Wildlife Vets role and responsibilities**
- **Expose participants to behind the scenes wildlife conservation and veterinary work**
- **Immobilisation and capture techniques used for various wildlife species**
- **Rhino protection through Veterinary Management**
- **Conservation Research**
- **Wildlife management and conservation challenges**
- **Appreciate the importance of herd health and intensive wildlife breeding**
- **Gain experience of a variety of veterinary wildlife and conservation working environments**
- **Vegetation types suitable for wildlife**
- **Tracks and tracking of Big Five**
- **Waterberg Wild Dog Project**
- **Rhino Rehabilitation**

# ABOUT THE PROJECT

AFRICA

## Course Fundamentals and Structure

### WEEK 1

Introduction to Entabeni Safari Conservancy and Research Projects

Introduction to Wildlife Veterinary work in the Context of African Wildlife (Dr Zoe Glyphis – Local Wildlife Vet) – 1 Day

Rhino orphanage – assist with orphaned rhino calves

Time spent with research team conducting conservation activities – 4 Days

### Week 2

Time spent with research team conducting conservation activities – 3 Days

Further insight into Wildlife Veterinary work (Dr Pierre Bester) – 1 Day

Build up to possible intervention and planning

Specialist Wildlife Vet to conduct intervention with group\*\* (Dr Pierre Bester) – 1 Day



# ABOUT THE PROJECT

AFRICA

## Dr Pierre Bester – Wildlife Veterinarian – Rhino Expert

He has a mixed animal practice (small and large domestic as well as wild) where the scope of his work includes the immobilisation, treatment, and translocation of African wildlife; specialising in rhino.

He's been involved with the immobilisation and translocation of thousands of rhinos, as well as countless other species.



# ABOUT THE PROJECT

AFRICA

## Dr Zoe Glyphis – Wildlife Veterinarian – Predator Specialist

Dr Zoe Glyphis has become one of South Africa's leading predator specialists and is on the forefront with veterinary medicine and veterinary assistance of wild dog, heyna and cheetah conservation all over South Africa.

She is helping and assisting several NGO groups and organizations with their efforts to increase predator ranges and to establish safe and genetically viable populations in new conservation areas.



ANY QUESTIONS?

[INFO@GAPAFRICAPROJECTS.COM](mailto:INFO@GAPAFRICAPROJECTS.COM) | +44 (0)207 1937819

Project Presentation 16



# ABOUT THE PROJECT

AFRICA

## Learning about a Veterinarians role in the field



ANY QUESTIONS?

[INFO@GAPAFRICAPROJECTS.COM](mailto:INFO@GAPAFRICAPROJECTS.COM) | +44 (0)207 1937819

Project Presentation 17

# ABOUT THE PROJECT

AFRICA

## The Rhino Orphanage

The Rhino Orphanage was the first-ever specialised, non-commercial centre dedicated to the rescue, rehabilitation, raising and release of orphaned rhinos back into the wild.

Although new-born rhinos can weigh up to 50kgs, they are essentially “helpless” and require protection so that they may survive and ultimately thrive.



# ABOUT THE PROJECT

AFRICA

## Introduction of Darting Techniques

Learn the basic principles for darting wildlife. Each student will have the opportunity to use the gas powered dart gun at the range.



# ABOUT THE PROJECT

AFRICA

## Introduction to Pharmacology



ANY QUESTIONS?

[INFO@GAPAFRICAPROJECTS.COM](mailto:INFO@GAPAFRICAPROJECTS.COM) | +44 (0)207 1937819

Project Presentation 20

# ABOUT THE PROJECT

AFRICA

## Bush Skills – Bush Walks, Tracking Wildlife



ANY QUESTIONS?

[INFO@GAPAFRICAPROJECTS.COM](mailto:INFO@GAPAFRICAPROJECTS.COM) | +44 (0)207 1937819

Project Presentation 21

## Monitoring the Entabeni Rhino Population

Behavioural observations, photos and GPS locations are recorded to document where the animals are occurring; keeping tabs on the localities and activities of White and Black Rhino on the reserve.

Importantly also monitor body condition, injuries, mating, calving, behaviour, herd structure etc.



# ABOUT THE PROJECT

AFRICA

## Research – Habitat and Prey Selection: Predators



ANY QUESTIONS?

[INFO@GAPAFRICAPROJECTS.COM](mailto:INFO@GAPAFRICAPROJECTS.COM) | +44 (0)207 1937819

Project Presentation 23

# ABOUT THE PROJECT

AFRICA

## Research – Elephant Monitoring & Fertility Study



ANY QUESTIONS?

[INFO@GAPAFRICAPROJECTS.COM](mailto:INFO@GAPAFRICAPROJECTS.COM) | +44 (0)207 1937819

Project Presentation 24



# ABOUT THE PROJECT

AFRICA

## Monitoring Herbivore Condition and Health



ANY QUESTIONS?

[INFO@GAPAFRICAPROJECTS.COM](mailto:INFO@GAPAFRICAPROJECTS.COM) | +44 (0)207 1937819

Project Presentation 25

# ABOUT THE PROJECT

AFRICA

## Camera Trap – Research and Study



ANY QUESTIONS?

[INFO@GAPAFRICAPROJECTS.COM](mailto:INFO@GAPAFRICAPROJECTS.COM) | +44 (0)207 1937819

Project Presentation 26

# ABOUT THE PROJECT

AFRICA

## Anti-Poaching Unit



ANY QUESTIONS?

[INFO@GAPAFRICAPROJECTS.COM](mailto:INFO@GAPAFRICAPROJECTS.COM) | +44 (0)207 1937819

Project Presentation 27

# ABOUT THE PROJECT

AFRICA

## Night Game Drives



ANY QUESTIONS?

[INFO@GAPAFRICAPROJECTS.COM](mailto:INFO@GAPAFRICAPROJECTS.COM) | +44 (0)207 1937819

Project Presentation 28

# ABOUT THE PROJECT

AFRICA

## Rhino – Fitting of Prosthetics



ANY QUESTIONS?

[INFO@GAPAFRICAPROJECTS.COM](mailto:INFO@GAPAFRICAPROJECTS.COM) | +44 (0)207 1937819

Project Presentation 29

# ABOUT THE PROJECT

AFRICA

## Rhino – Sinus Infection



ANY QUESTIONS?

[INFO@GAPAFRICAPROJECTS.COM](mailto:INFO@GAPAFRICAPROJECTS.COM) | +44 (0)207 1937819

Project Presentation 30

# ABOUT THE PROJECT

AFRICA

## Lion immobilisation & collaring/removal



ANY QUESTIONS?

[INFO@GAPAFRICAPROJECTS.COM](mailto:INFO@GAPAFRICAPROJECTS.COM) | +44 (0)207 1937819

Project Presentation 31

# ABOUT THE PROJECT

AFRICA

## Cheetah Relocation – Endangered Wildlife Trust (EWT)



ANY QUESTIONS?

[INFO@GAPAFRICAPROJECTS.COM](mailto:INFO@GAPAFRICAPROJECTS.COM) | +44 (0)207 1937819

Project Presentation 32



# ABOUT THE PROJECT

AFRICA

## Necropsies



ANY QUESTIONS?

[INFO@GAPAFRICAPROJECTS.COM](mailto:INFO@GAPAFRICAPROJECTS.COM) | +44 (0)207 1937819

Project Presentation 33

# ABOUT THE PROJECT

AFRICA

## Free-roaming Waterberg Wild Dog – Talks



ANY QUESTIONS?

[INFO@GAPAFRICAPROJECTS.COM](mailto:INFO@GAPAFRICAPROJECTS.COM) | +44 (0)207 1937819

Project Presentation 34

## Possible Lectures & Debate

- Drugs used in wildlife medicine
- Calculating doses in wildlife
- Logistics of wildlife transportation: customised vehicles, crates and equipment
- The Game Trade-Auction and value of livestock
- Game capture systems
- Darting wildlife
- Boma management and rehabilitation
- Orphaned Rhino rehabilitation
- Parasite control
- Managing game reserves and Land Capacity Model
- Species control - predator pits
- State veterinary disease control in practice
- Documentation required: Red Cross Permits





AFRICA

# ACCOMODATION & LIFESTYLE

Living in the African Bush

## Entabeni Student Camp (Ravenside)

The student camp is in the middle of the reserve and consists of modern shared accommodation units.

The one-bedroom units have a lounge/study area 2/3 students per bedroom unit.

Communal washing machine for students to do their laundry, as well as an outdoor communal living space for relaxation.

Two sets of linen and towels are provided per student for the entire period of stay.



## Meals

All meals are included, and there is a communal kitchen where food will be prepared in groups.

Some days lunch will be had back at camp, other days lunch will be brought into the field to be had as a picnic.

Evenings are spent at leisure around the campfire.

Only Sunday will be an off day to 'chill' in camp or do extra activities.



## Sunday additional activities (own cost)

- Horse Riding (1 hour) R590 pp
- Horse Riding (2 Hours) R1090 pp
- Sunset Cruise (Includes finger foods & softdrinks) R690 pp
- Cultural Foundation Drumming session R600 pp
- Guided Bush Walk (Non Predator) R300 pp
- Guided Bush Walk (Predator) R800 pp
- Bicycle Rental - 4 hours at Clubhouse R120 pp
- Spa massages between R320 – R830 pp
- Marimba Band and Pedi Dancers (Group activity enquire for rates)
- Game Drive and Boat Cruise with Lunch at Lakeside R890 pp
- Picnic Lunch at Yellow-wood Gorge Mountain Pool R890 pp



## Sunday additional activities (own cost)

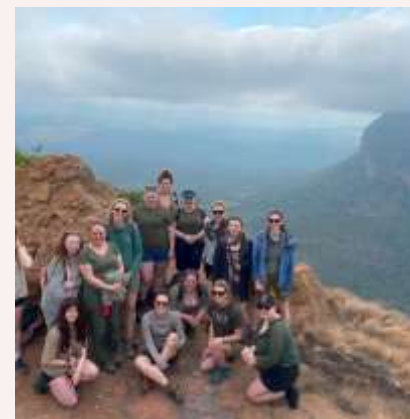




# ACCOMMODATION & LIFESTYLE

AFRICA

## Life on Reserve



ANY QUESTIONS?

[INFO@GAPAFRICAPROJECTS.COM](mailto:INFO@GAPAFRICAPROJECTS.COM) | +44 (0)207 1937819

Project Presentation 41

# WHY SHOULD I TRAVEL?

AFRICA

## What do previous travellers say about the Waterberg Wildlife & Veterinary Course?



"The post-mortem helped massively with anatomy and physiology revision!"



"It is difficult to pinpoint one thing but probably the most memorable aspect was being involved in a rhino sedation in which the SVN's were actively involved!"



"I am more humbled. I know what I want to do moving forward career-wise"

Reference: GAP Africa Projects Post Project Trip Questionnaire 23/24

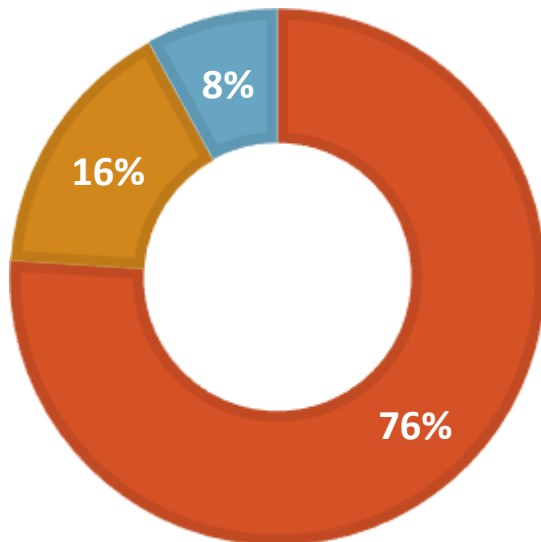
# WHY SHOULD I TRAVEL?

AFRICA

## Personal Development

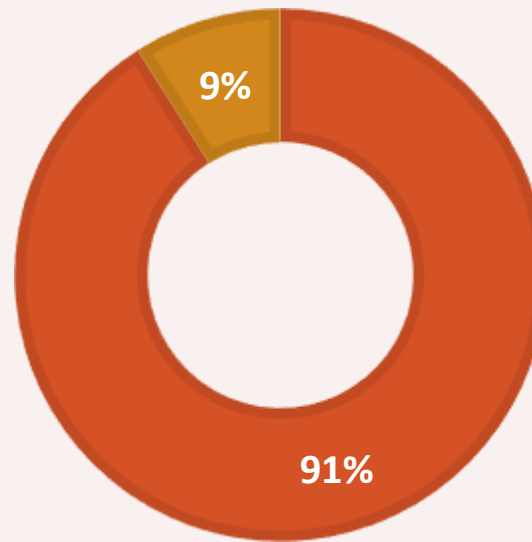
### MENTAL HEALTH IMPROVEMENT

■ Yes ■ No ■ NA



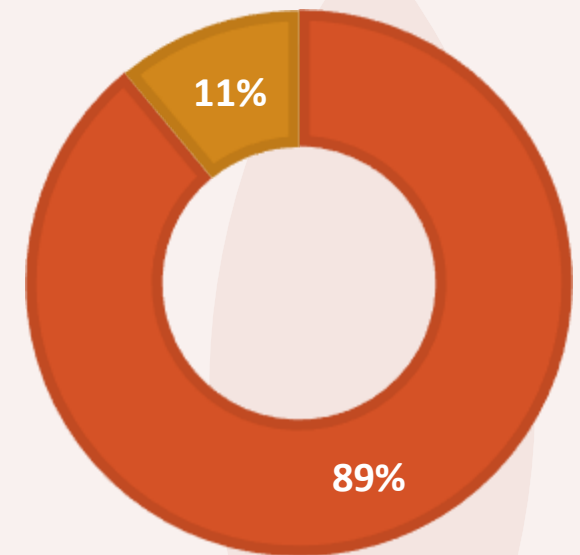
### CONFIDENCE IMPROVEMENT

■ Yes ■ No



### RESILIENCE IMPROVEMENT

■ Yes ■ No



Reference: GAP Africa Projects Post Project Trip Questionnaire 23/24



**AFRICA**

# BOOKING YOUR ADVENTURE

The next steps to the trip of a  
lifetime!

# BOOKING YOUR ADVENTURE

AFRICA

## Dates & key deadlines

### Proposed trip dates are:

**Depart UK: 20<sup>th</sup> July | Arrive SA: 21<sup>st</sup> July 2025**

**Depart SA: 2<sup>nd</sup> August | Arrive UK: 3<sup>rd</sup> August 2025**

### Trip cost:

**£2,495 – £2,695 est. (based on a group of 16)**

### Key deadlines are:

- Return of booking forms or online application by: 04/10/2024
- Deposit of £300 to confirm placement within two weeks of provisional booking to confirm place
- Instalment payment of 50% due 16 weeks before departure 26/05/2025
- Balance payment due 8 weeks before departure 13/01/2025
- E tickets will be issued 2 weeks prior to departure and emailed to students

# BOOKING YOUR ADVENTURE

AFRICA

## What is Included?

- Flights
- Transfers to/from project
- Accommodation
- Three meals per day (self prepared)
- All activities as part of the project
- ATOL protection
- Airport meet/greet
- 24/7 In country support

## NOT Included

- Personal Travel Insurance \*
- Meals on travel days – before arriving & after departing from project
- Any activities not specified as part of the project
- Visa's/travel documents

\* We recommend that you take out personal travel insurance as soon as your booking is confirmed.



# BOOKING YOUR ADVENTURE

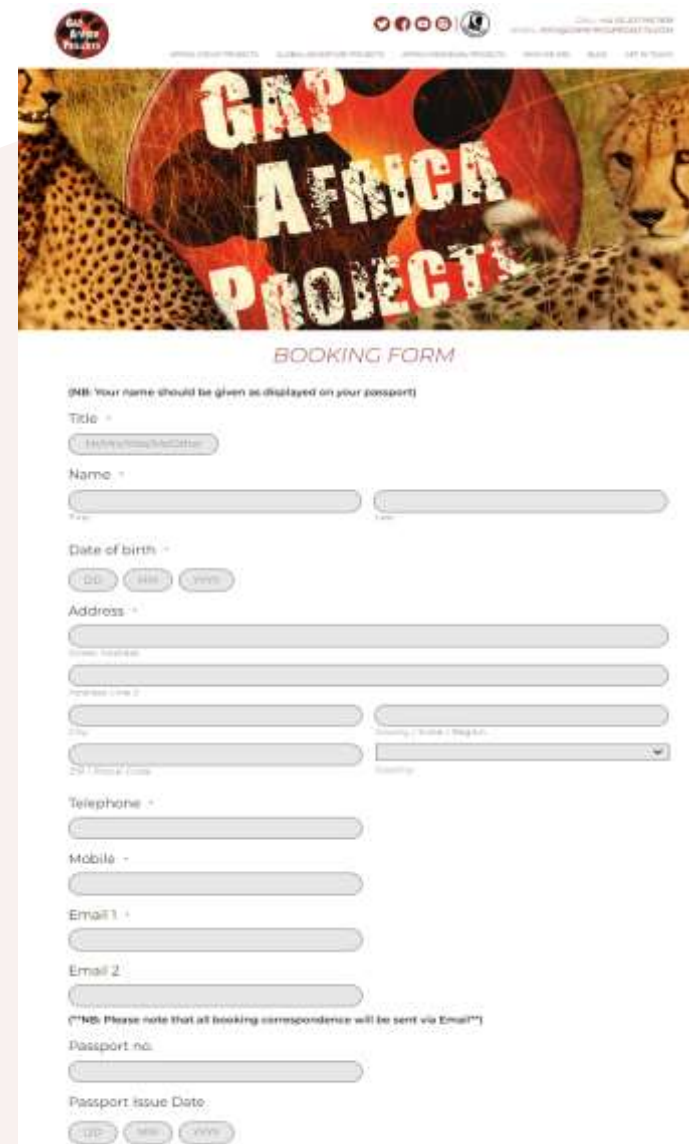
AFRICA

## Booking Form

- Please submit by 04/10/2024
- No deposit required at this stage of booking
- Passport fields not mandatory

## Key deadlines are:

- Deposit of £300 to confirm placement
- Instalment payment of 50% due 16 weeks before departure
- Balance payment due 8 weeks before departure



The image shows a screenshot of the 'GAP Africa Projects' website's booking form. The header features the GAP Africa Projects logo and navigation links. Below the header is a banner image of two cheetahs with a red circular graphic containing the text 'GAP AFRICA PROJECTS'. The main heading is 'BOOKING FORM'. The form includes a note: '(NB: Your name should be given as displayed on your passport)'. The fields are: Title (dropdown), Name (first and last name), Date of birth (DD, MM, YYYY), Address (street, house number, city, country, and postal code), Telephone (main and mobile), Email (two separate fields), and Passport (number and issue date). A note at the bottom states: '(\*\*NB: Please note that all booking correspondence will be sent via Email\*\*)'.

# THE NEXT STEPS

AFRICA

## Confirmation Documents

Confirmation documents will be issued and sent directly to you via email

Please communicate with us with any questions relating to the field trip

**Your Booking**

**Travel Advice**

**Names and surnames**

**Passport expiry date**

**Passport Copies**

**Travel Insurance**

**Passengers Travelling**

**Passenger(s)**

**Site Visit**

**Inclusions**

**Exclusions**

**Your Flight(s)**

FLIGHT	CLASS	FARE	STATUS
BA496	Y	30.00	London Heathrow (LHR)
BA497	Y	30.00	Lilongwe (LLW)
BA498	Y	30.00	London Heathrow (LHR)
BA499	Y	30.00	Lilongwe (LLW)

**CONFIRMATION INVOICE**

**Client Details**

**Invoice Details**

Invoice No.	Invoice Date	Invoice Total
123456789	12/12/2023	1,000.00

**Payment Details**

Invoice No.	Invoice Date	Invoice Total
123456789	12/12/2023	1,000.00

**ATOL Certificate**

This confirms that your money is protected by the ATOL scheme and that you can get home if your travel company ceases.

This certificate sets out how the ATOL scheme will protect the people named on it for the parts of their trip listed below.

**Who is protected?**

**What is protected?**

**Who is protecting your trip?**

**Your protection**

1 complete your trip and return to the UK; or  
2 receive a refund.

**Important Information**

By holding this ATOL Certificate, you agree to the terms of the ATOL scheme (available at [www.atol.org.uk](http://www.atol.org.uk)).



# BOOKING YOUR ADVENTURE

AFRICA

## Booking Form

A screenshot of the GAP Africa Projects website's booking form. The header features a banner with cheetahs and the text 'GAP AFRICA PROJECTS'. Below the banner, the form is titled 'BOOKING FORM' and includes a note: '(NB: Your name should be given as displayed on your passport)'. The form fields are: Title (dropdown), Name (three text boxes), Date of birth (calendar), Passport no. (text box), Passport issue Date (calendar), Passport Expiry Date (calendar), Nationality of Passport (dropdown), Next of Kin Details (Full name, Relationship), Contact Telephone (Do not enter +44 for UK numbers), and a final text box for dietary requirements.

[gapafricaprojects.com/booking-form-25-wrc-4635-wriddle-college/](https://gapafricaprojects.com/booking-form-25-wrc-4635-wriddle-college/)

## Sustainability & Social, Economic Responsibility

**Local employment from rural communities** – our project partners employ a high percentage of staff from local communities. They advocate training to advance careers in hospitality, wildlife and conservation.

**Low environmental impact camps** – our project bush camps are built with minimal impact on the environment. Resources from the surrounding area are utilised for buildings, water is (where possible) pumped from local river sources and green energy supplies, such as solar are championed.

**Community donations and support** – we encourage all our international study groups to be proactive in donation collections and arrange for excess baggage for said donations to be taken out to South Africa in support of the local communities.

**Move Africa, supporting young females** – 3 in 10 girls in South Africa miss a week of school every month because they cannot afford basic sanitary products. Our project partners work with Move Africa alongside their partner NGOs, to distribute menstrual cups to the local communities and provide education workshops.

**Rhino Art** – Project rhino realises the enormous responsibility the youth have to ensure our wildlife is protected for many generations to come. They ensure they can reach and educate as many kids as possible through Rhino Art, using art workshops to teach about conservation. This initiative is supported by our local project partners.

**Food/crop education** – our project partners encourage food and crop education to rural communities, where cost of living to low income families and distance travelled to obtain basic resources can prove problematic. Projects include community allotments and providing education on best practice for crop rotations, harvest seasons and nutrition.

**Recycling workshops** – Litter, and in particular plastics, is a major issue and threat to the ecosystem in Southern Africa. Rural communities have limited waste removal available and it is therefore a problem escalating at an alarming rate. Recycling workshops are provided through local schools to help educate children on the importance of correctly disposing of litter and recycling plastics.



**GLOBAL** reach. **ADVENTURE** for all. **PROJECTS** to inspire.

Explore our network of Global Adventure Projects:



[GLOBALADVENTUREPROJECTS.COM](http://GLOBALADVENTUREPROJECTS.COM)

