



BOSTON COLLEGE PROJECT PRESENTATION

The background of the slide is a composite image. On the left, there is an underwater tunnel with people walking through it, surrounded by schools of fish. On the right, there is a close-up of a lemur sitting on a log and eating a piece of green vegetation. A large, semi-transparent grey circle is overlaid in the center, containing the text.

Netherlands Primate Park & Zoo Expedition



GLOBAL reach. **ADVENTURE** for all. **PROJECTS** to inspire.

ABOUT US:



GAP Africa Projects

- We are a specialised travel company that offers academic trips and volunteering opportunities for groups and individual travellers, in a number of locations worldwide
- We pride ourselves on curating experiences which are personalised to your needs and requirements
- Our first project travelled in 2010
- Full ATOL Bonding
- Working with over 50 Colleges and Universities around the UK
- A small dedicated team in the UK and South Africa.



WHY SHOULD I TRAVEL?



What do previous travellers say about?



'Visiting the zoos and getting to see the **animals** that we may not be able to see in the UK"



"It was the **best** zoo I have ever seen and I'm so happy that I managed to **experience** it."



"It was an **incredible** place to **experience**"

Reference: GAP Africa Projects Post Project Trip Questionnaire 23/24



ABOUT THE PROJECT

Location and project content

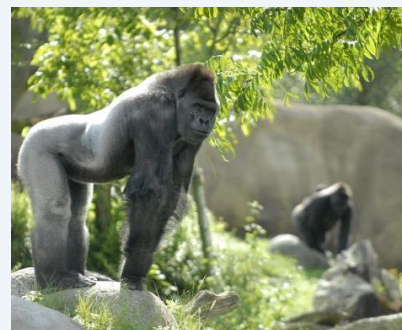


ABOUT THE PROJECT



Your Wildlife Park and Zoo Programme

- Experience some of the best Zoo's in Europe
- A park with forested enclosures and roam free with primates.
- Animal behavioral studies during guided talk of primates.
- Presentation by a university level lecturer on diets and enrichment methods for primates (subject to availability).
- Be guided by subject matter experts though some of the largest and best kept environmental displays in the world.
- All guided tours and curricular activities are given with clear learning objectives that you can set.
- See indoor controlled bushlands and a central American desert, landscaped with rocks and vegetation.
- Observe manatees in the largest indoor mangrove swamp in the world.



ABOUT THE PROJECT



Apenheul Primate Park



ANY QUESTIONS?

INFO@GAPAFRICAPROJECTS.COM | +44 (0)207 1937819

INFORMATION PACK 6

ABOUT THE PROJECT



Apenheul Primate Park



ANY QUESTIONS?

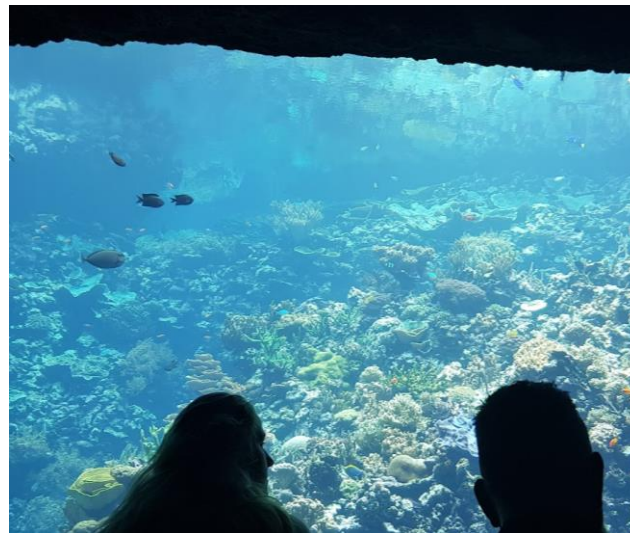
INFO@GAPAFRICAPROJECTS.COM | +44 (0)207 1937819

INFORMATION PACK 7

ABOUT THE PROJECT



Royal Burgers' Zoo



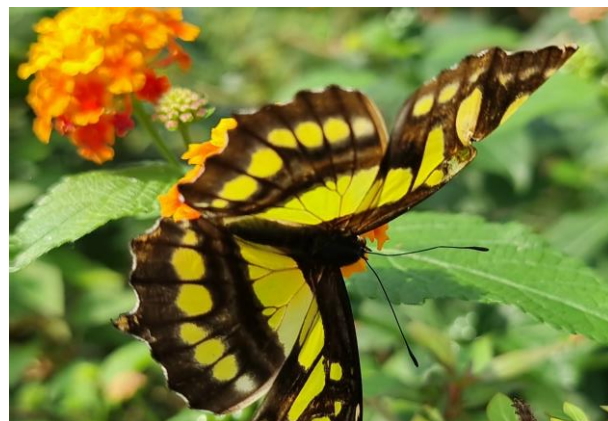
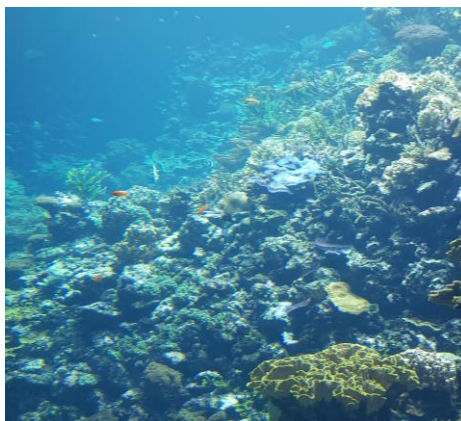
ANY QUESTIONS?

INFO@GAPAFRICAPROJECTS.COM | +44 (0)207 1937819

ABOUT THE PROJECT



Royal Burgers' Zoo



ANY QUESTIONS?

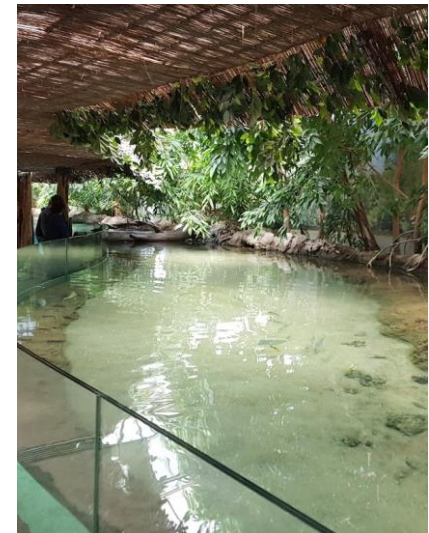
INFO@GAPAFRICAPROJECTS.COM | +44 (0)207 1937819

INFORMATION PACK 9

ABOUT THE PROJECT



Rotterdam Zoo



ABOUT THE PROJECT



Rotterdam Zoo



ANY QUESTIONS?

INFO@GAPAFRICAPROJECTS.COM | +44 (0)207 1937819

INFORMATION PACK 11

ABOUT THE PROJECT



Itinerary

- ❖ Day 1 – Coach transport from your chosen pick-up to Hull Ferry Port for an overnight crossing to Europoort, Rotterdam.
- ❖ Day 2 – On arrival in Netherlands you will go straight to Apenheul Primate Park where you will spend the day experiencing a forest of free roaming primates. Educational tour and Q&A with subject matter experts is included. A short transfer to Arnhem where you will be staying overnight at the Arnhem Youth Hostel. Dinner included
- ❖ Day 3 – After breakfast at the hostel you will spend the day at Burgers Zoo, Arnhem. Educational tour and talk will be given in the Bush environmental (eco) display area. Many topics will be discussed, including the housing of animals.
- ❖ Day 4 – After breakfast at the hostel you will travel to Rotterdam Zoo which will take approximately 1.5 hours. The day will be spent here where you can see the striking feature of the giraffe barn in the African savannah. Packed lunch provided. After a short visit to the local shopping mall, you will head to the ferry port for the overnight crossing to the UK.
- ❖ Day 5 – It's an early arrival into the port of Hull, from here you'll finish your journey at your chosen drop-off point.



ABOUT THE PROJECT



Itinerary Map

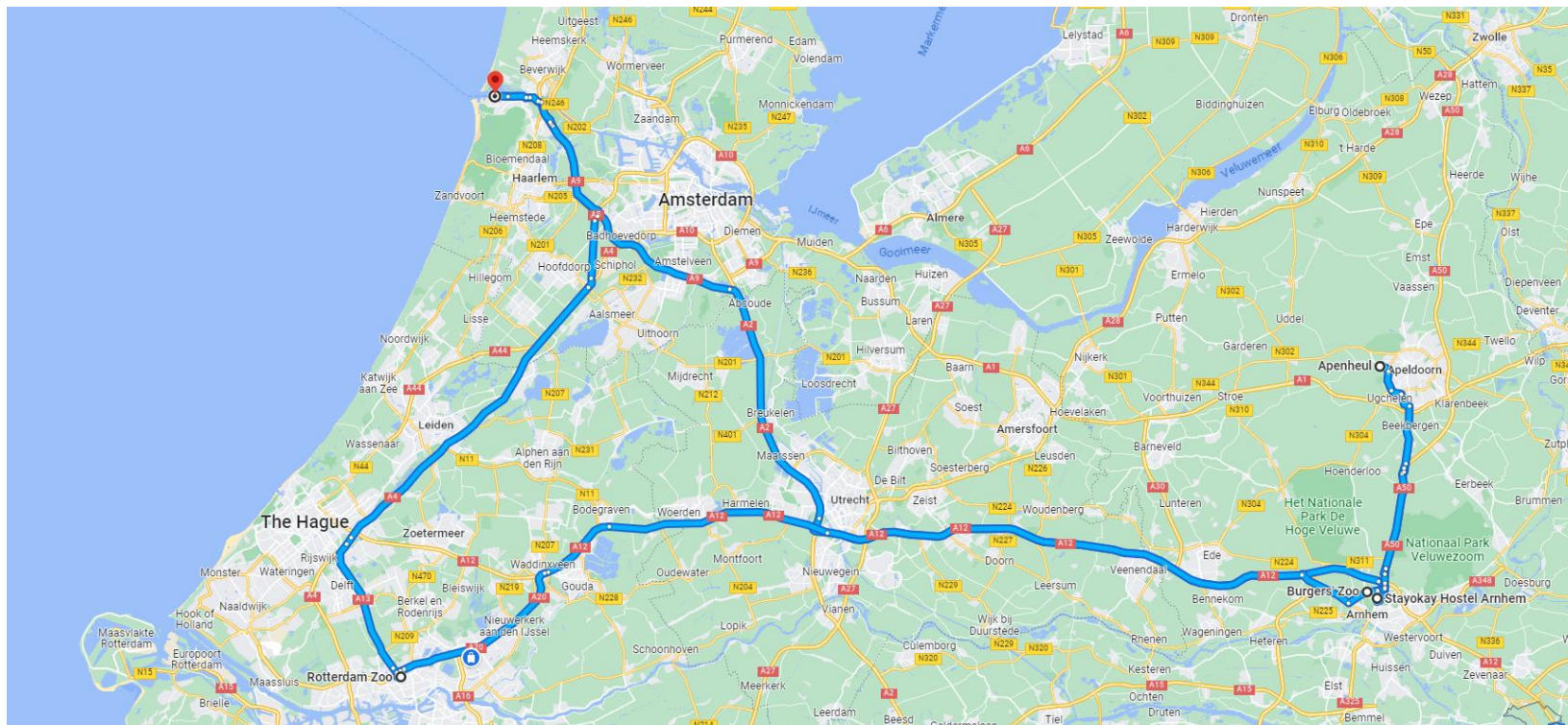


ABOUT THE PROJECT



Itinerary Map

College → Ferry Port, Hull → Europoort, NED → Apenheul Primate Park → Accommodation → Royal Burgers Zoo → Rotterdam Zoo → Europoort, NED





USEFUL INFORMATION

Details on Accommodation,
What's Included, Kit List



ACCOMMODATION & LIFESTYLE

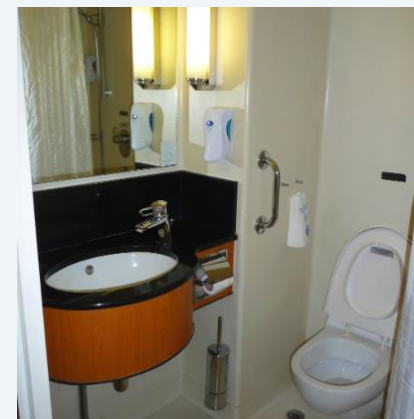
EUROPE

Ferry

Shared 4-person cabins are provided on the overnight ferry.

Breakfasts and dinner are included for outbound and return.

The ferry includes a range of services on board including, a Costa, shops and a range of entertainment

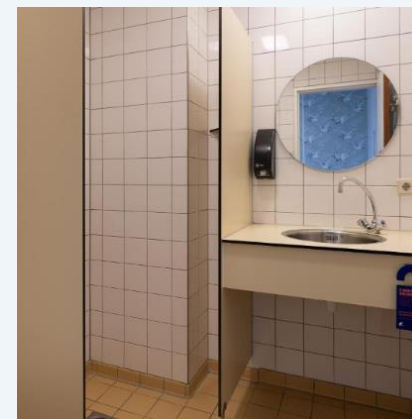


ACCOMMODATION & LIFESTYLE



Accommodation in Arnhem

Accommodation at the Hostel in Arnhem is in 6-person rooms each with their own bathroom facilities, bed packs are provided. Breakfast and dinner are provided at the hostel with a packed lunch (self-prepared) on days 3 & 4.



ACCOMMODATION & LIFESTYLE



Accommodation in Arnhem



WHAT'S INCLUDED



Included

- Coach transport for duration of trip
- Ferry crossing
- Accommodation, including cabin on the ferry
- All meals, except as stated below
- Zoo/Park Entry Fees
- Educational talks and tours
- 24/7 support

Not Included

- Personal travel insurance
- Lunch on day 2 and also departure and return days in the UK
- Any activities not specified as part of the project





Suggested kit list

- Short sleeve shirts
- T shirts
- Comfortable walking shoes
- Rain jacket
- Sweatshirt/Fleece
- Padded parka jacket/windbreaker – warm
- Socks
- Warm Hat (for winter) /Hat for sun protection
- Gloves for warmth (for winter)
- Changes of casual clothes for evenings
- Underwear
- Sandals / flip flops / comfy shoes to wear
- Toiletries
- Personal medical items

Other useful items

- Refillable water bottle
- Camera
- Spare batteries
- Sunglasses /Sunscreen
- Notebook/diary

BOOKING YOUR ADVENTURE



Proposed dates & key deadlines

2025 Proposed trip dates are:

Depart UK: Friday 23rd May | Arrive The Netherlands: Saturday 24th May

Depart The Netherlands Monday 26th May : | Arrive UK: Tuesday 27th May

Trip cost:

£825.00 (based on a group of 20 students)

Key deadlines are:

- Return of booking forms or online application by:
- Deposit of £200 to confirm placement paid via online college shop
- Instalment payment of £312.50 due 04/02/2025
- Balance payment of £312.50 due 01/04/2025
- Payment schedule available to help manage finances
- E tickets will be issued 2 weeks prior to departure and emailed to students

BOOKING YOUR ADVENTURE



Group Web Page:

<https://gapafricaprojects.com/25-4608/>



Booking Form:

<https://gapafricaprojects.com/booking-form-25-boa-nez-4608-boston-college-2/>



BOOKING FORM

Your Global Adventure Starts here!

Please use the form below to submit your provisional booking to your selected project. You have the option to pay your initial deposit with the submission of your booking form, or we will contact you for payment once your project placement has been secured.

If you'd like to contact us to ask any initial questions or find out more about what project you'd like to go on and when, you can get also get in touch using our short enquiry form, or by calling +44 (0) 207 193 7819.

(NB: Your name should be given as displayed on your passport)

Title *

Name *

Date of birth *

Address *

Street Address

Address Line 2

City

Country / State / Region

ZIP / Postal Code

Country

Telephone (Do not enter +44 for UK numbers) *

Use Format 01234 567890

Mobile (Do not enter +44 for UK numbers) *

Use Format 01234 567890

Email 1 *



GLOBAL reach. **ADVENTURE** for all. **PROJECTS** to inspire.

Explore our network of Global Adventure Projects:



GLOBALADVENTUREPROJECTS.COM

